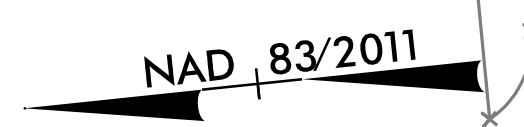


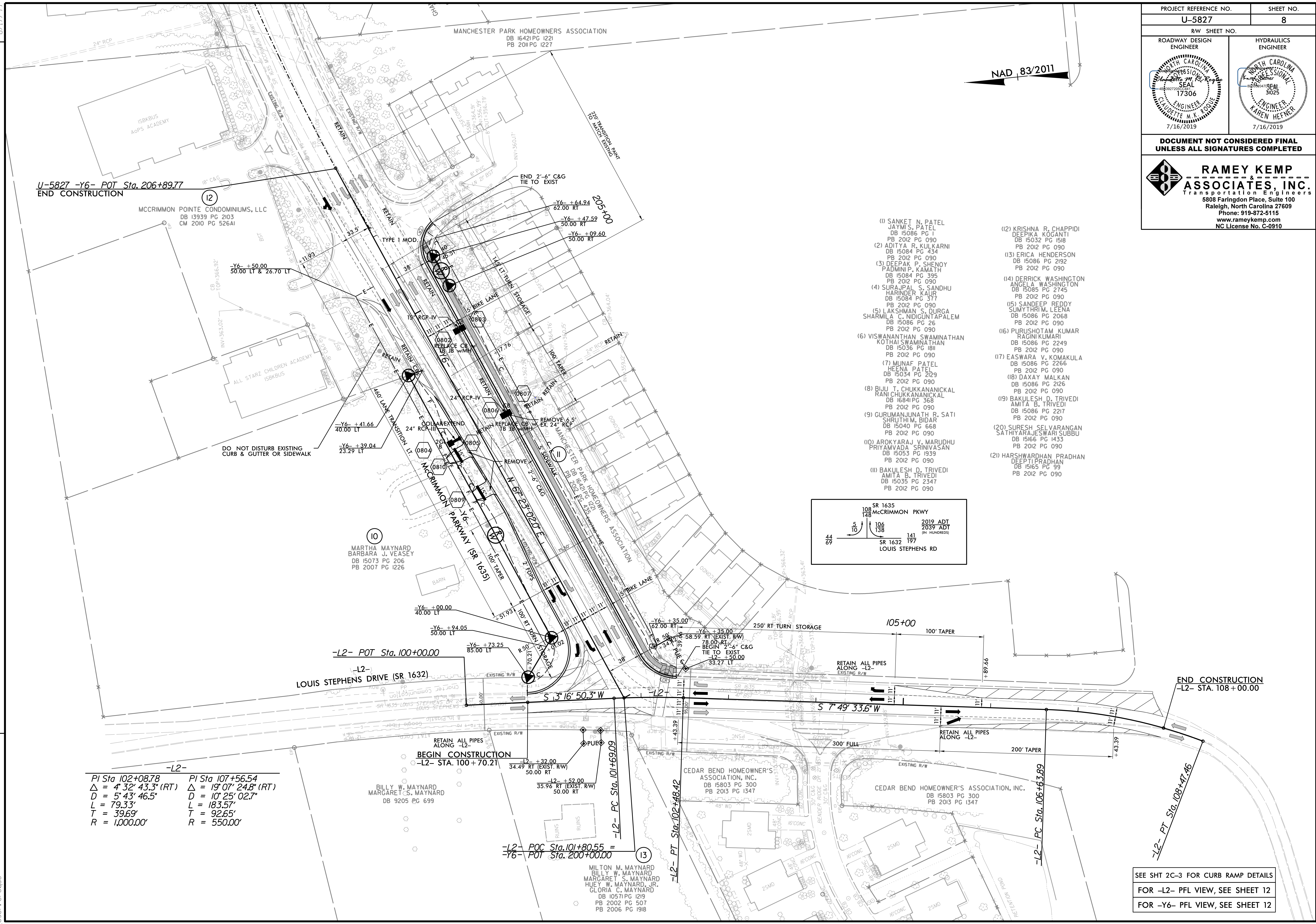
PROJECT REFERENCE NO. <b>U-5827</b>	SHEET NO. <b>8</b>
RW SHEET NO.	
ROADWAY DESIGN ENGINEER	HYDRAULICS ENGINEER

DOCUMENT NOT CONSIDERED FINAL  
UNLESS ALL SIGNATURES COMPLETED

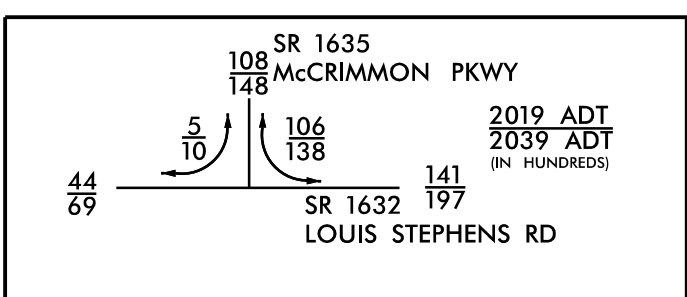
**RAMEY KEMP ASSOCIATES, INC.**  
Transportation Engineers  
5808 Faringdon Place, Suite 100  
Raleigh, North Carolina 27609  
Phone: 919-872-5115  
www.rameykemp.com  
NC License No. C-9910



REVISIONS



- (1) SANKET N. PATEL  
JAYMI S. PATEL  
DB 15086 PG 1  
PB 2012 PG 090
- (2) ADITYA R. KULKARNI  
DB 15084 PG 434  
PB 2012 PG 090
- (3) DEEPAK P. SHENOY  
PADMINI P. KAMATHI  
DB 15084 PG 395  
PB 2012 PG 090
- (4) SURAJPAL S. SANDHU  
HARINDER KALUR  
DB 15084 PG 377  
PB 2012 PG 090
- (5) LAKSHMAN S. DURGA  
SHARMILA C. NIDIGUNTAPELEM  
DB 15086 PG 26  
PB 2012 PG 090
- (6) VISWANATHAN SWAMINATHAN  
KOTHA SWAMINATHAN  
DB 15036 PG 181  
PB 2012 PG 090
- (7) MUNAF PATEL  
HEENA PATEL  
DB 15034 PG 2129  
PB 2012 PG 090
- (8) BIJU T. CHUKKANICKAL  
RANI CHUKKANICKAL  
DB 1684 PG 368  
PB 2012 PG 090
- (9) GURUMANJUNATH R. SATI  
SHRUTHI M. BIDAR  
DB 15040 PG 668  
PB 2012 PG 090
- (10) AROKYARAJ V. MARUDHU  
PRIYAMVADA SRINIVASAN  
DB 15053 PG 1939  
PB 2012 PG 090
- (11) BAKULESH D. TRIVEDI  
AMITA B. TRIVEDI  
DB 15035 PG 2347  
PB 2012 PG 090
- (12) KRISHNA R. CHAPPIDI  
DEEPIKA KOGANTI  
DB 15032 PG 1518  
PB 2012 PG 090
- (13) ERICA HENDERSON  
DB 15086 PG 2192  
PB 2012 PG 090
- (14) DERRICK WASHINGTON  
ANGEL A. WASHINGTON  
DB 15085 PG 2745  
PB 2012 PG 090
- (15) SANDEEP REDDY  
SUMYTHIRI M. LEEENA  
DB 15086 PG 2068  
PB 2012 PG 090
- (16) PURUSHOTAM KUMAR  
RAGINI KUMARI  
DB 15086 PG 2249  
PB 2012 PG 090
- (17) EASWARA V. KOMAKULA  
DB 15086 PG 2266  
PB 2012 PG 090
- (18) DAXAY MALKAN  
DB 15086 PG 2126  
PB 2012 PG 090
- (19) BAKULESH D. TRIVEDI  
AMITA B. TRIVEDI  
DB 15086 PG 2217  
PB 2012 PG 090
- (20) SURESH SELVARANGAN  
SATHYARAJESWARI SUBBU  
DB 15166 PG 1433  
PB 2012 PG 090
- (21) HARSHWARDHAN PRADHAN  
DEEPIKA DHANU  
DB 15165 PG 99  
PB 2012 PG 090



**-L2-**  
 PI Sta 102+08.78    PI Sta 107+56.54  
 $\Delta = 4' 32'' 43.3''$  (RT)     $\Delta = 19' 07'' 24.8''$  (RT)  
 $D = 5' 43'' 46.5''$      $D = 10' 25'' 02.7''$   
 $L = 79.33'$      $L = 183.57'$   
 $T = 39.69'$      $T = 92.65'$   
 $R = 1,000.00'$      $R = 550.00'$

SEE SHT 2C-3 FOR CURB RAMP DETAILS  
 FOR -L2- PFL VIEW, SEE SHEET 12  
 FOR -Y6- PFL VIEW, SEE SHEET 12

7/16/2019 U5827\_Rdy\_psh06.dgn