

8.17.17.99

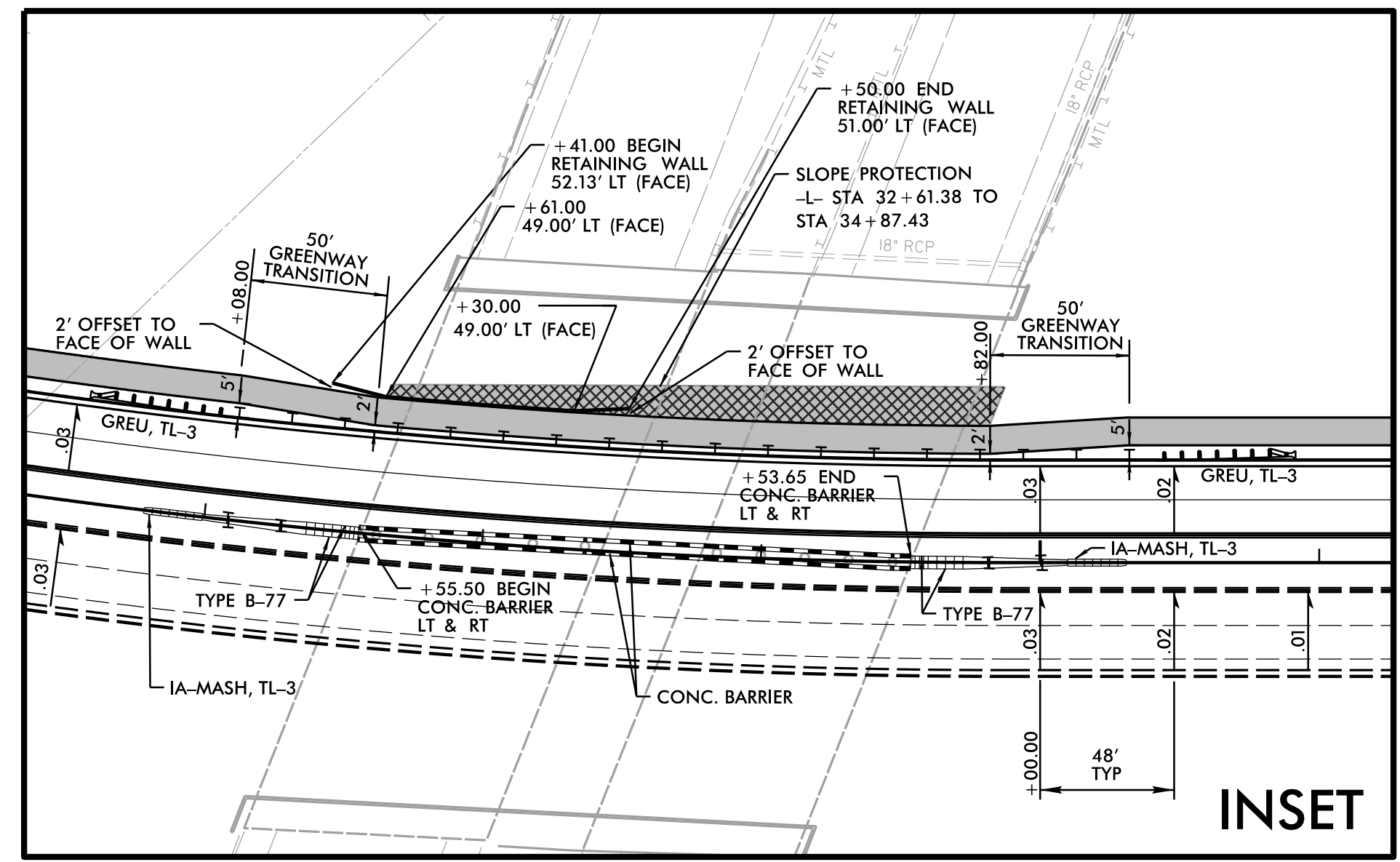
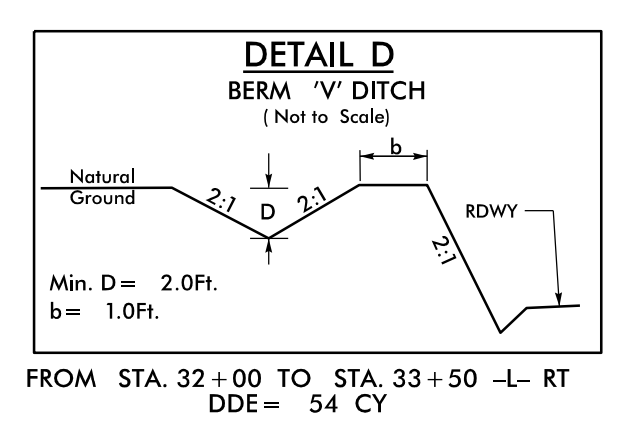
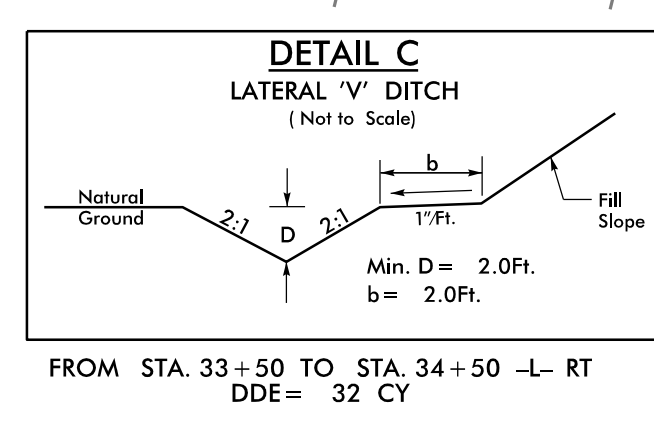
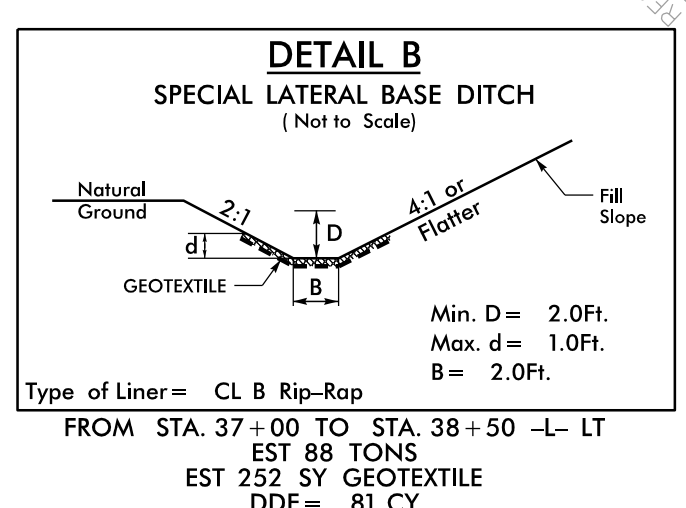
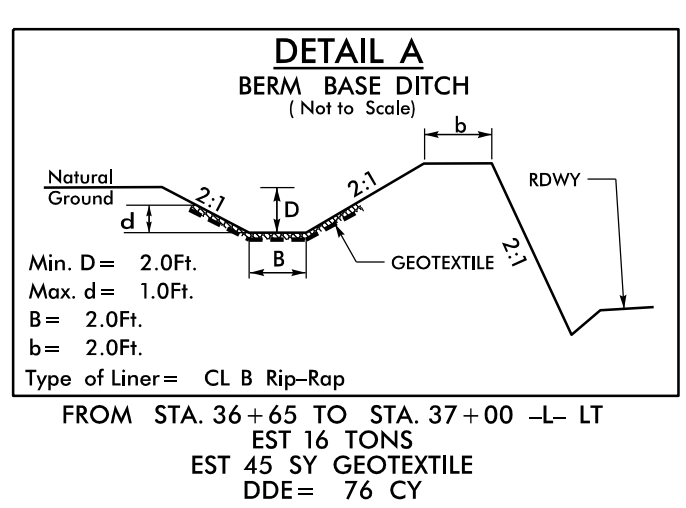
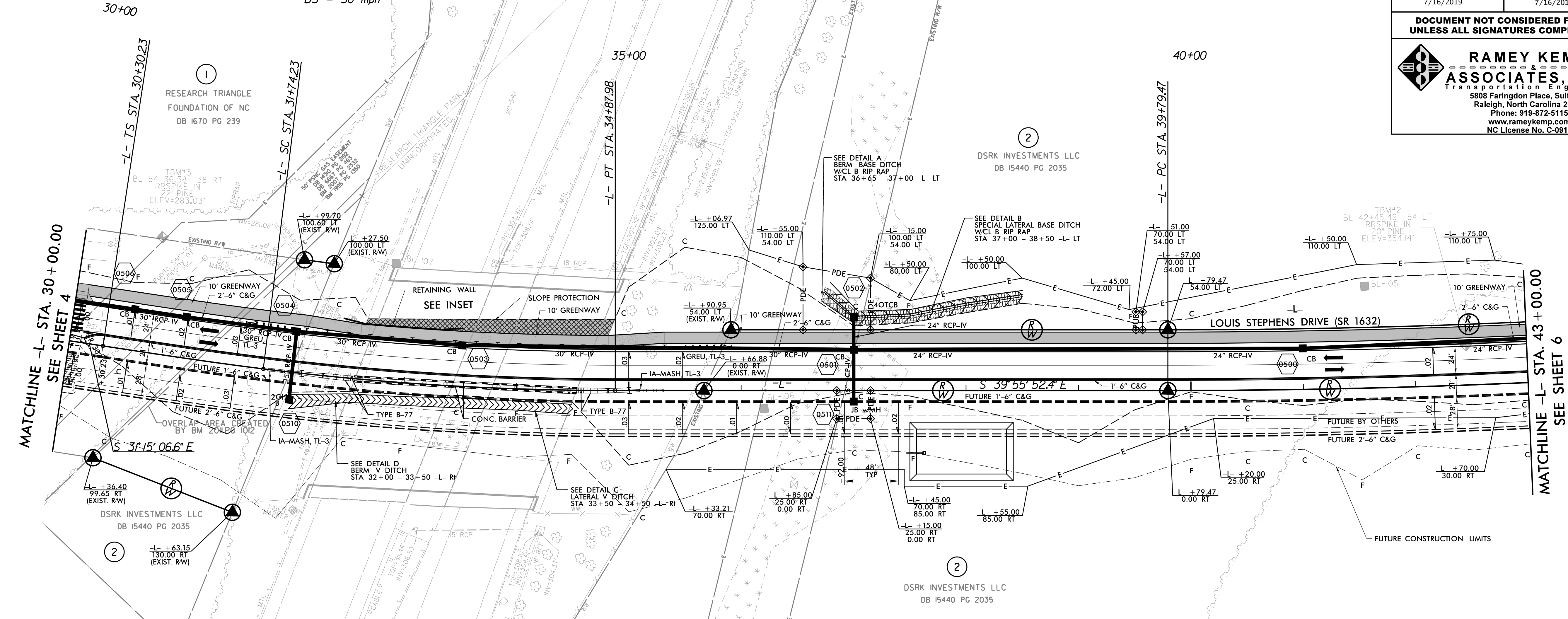
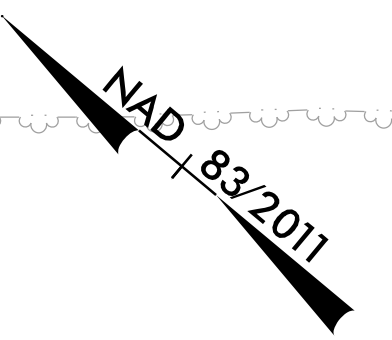
PROJECT REFERENCE NO. U-5827	SHEET NO. 5
RW SHEET NO.	
ROADWAY DESIGN ENGINEER 	HYDRAULICS ENGINEER

DOCUMENT NOT CONSIDERED FINAL
UNLESS ALL SIGNATURES COMPLETED

RAMEY KEMP ASSOCIATES, INC.
 Transportation Engineers
 5808 Faringdon Place, Suite 100
 Raleigh, North Carolina 27609
 Phone: 919-872-5115
 www.rameykemp.com
 NC License No. C-0910

-L-

PI Sta 31+26.23 Os = 1' 37" 12.0" Ls = 144.00' LT = 96.00' ST = 48.00'	PI Sta 33+31.31 Δ = 7' 03" 33.9" (LT) D = 2' 15" 00.0" L = 313.75' T = 157.07' R = 2,546.48' e = 0.03 Runoff = 144 DS = 50 mph	PI Sta 42+83.71 Δ = 4' 49" 32.6" (LT) D = 0' 47" 36.9" L = 608.10' T = 304.23' R = 7,220.00' e = NC DS = 50 mph
--	--	--



FOR RETAINING WALL PLANS, SEE SHEETS W-1 & W-2

FOR -L- PROFILE VIEW, SEE SHEET 9

REVISIONS

7/16/2019
U5827-Rdw_psh05.dgn
User: craque