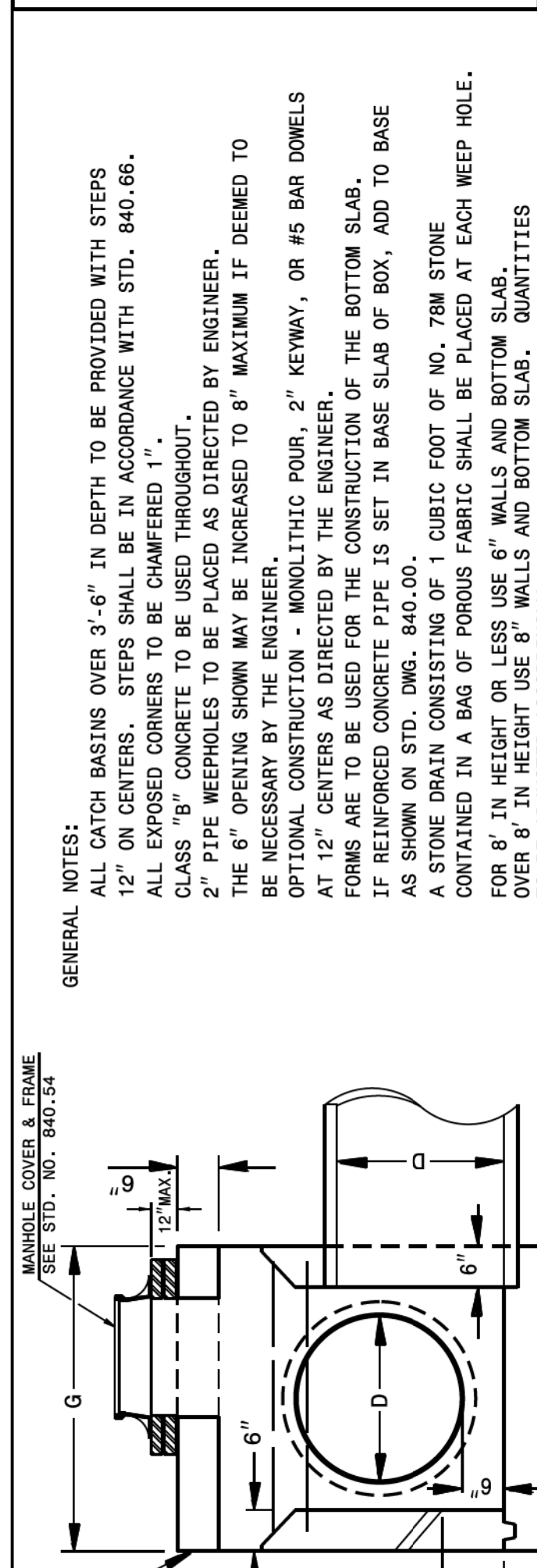
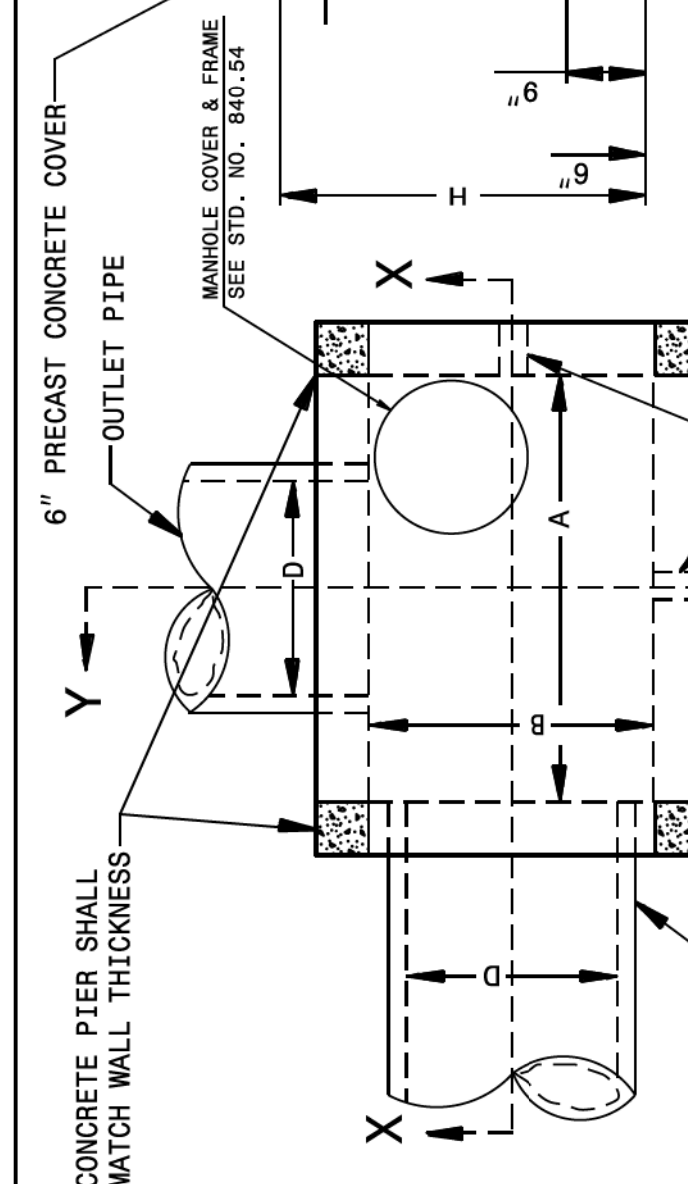


24-APR-2019 07:24
 S:\Contracts\Contractors\Spec:01 Details\Jhoverton\840d04 3 or 4 side OTC.dgn
 Jhoverton AT: CSU-292595

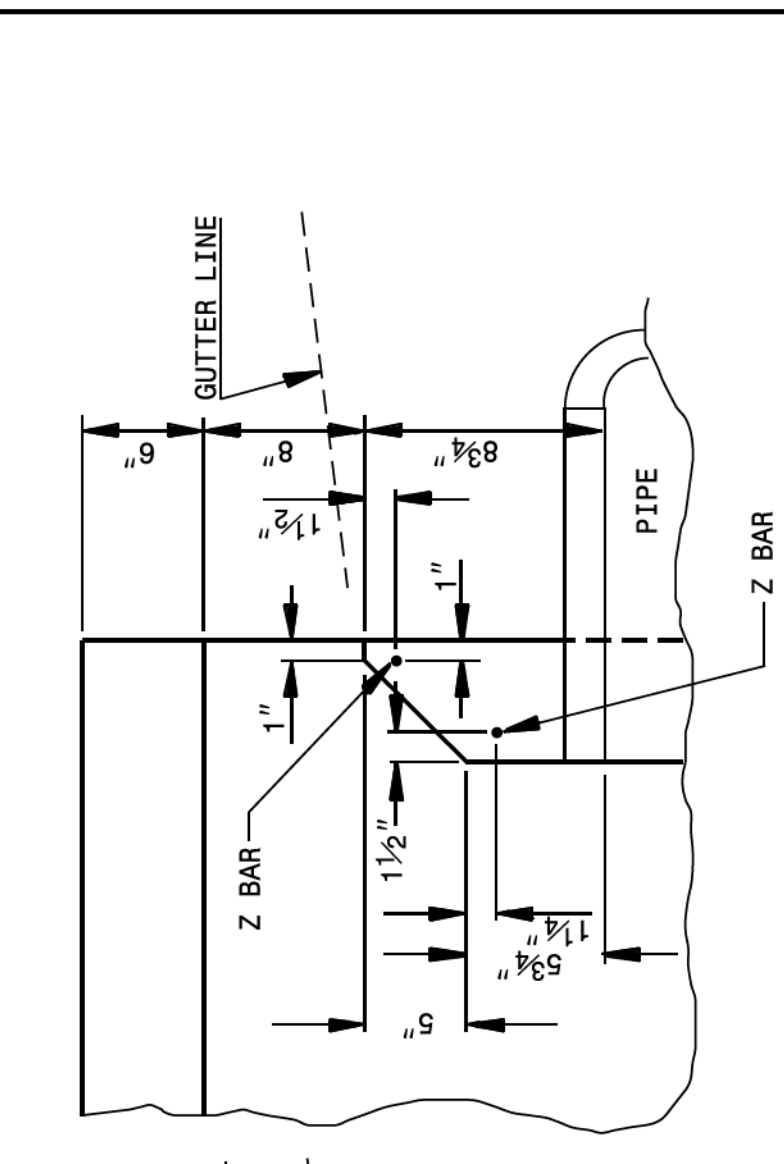
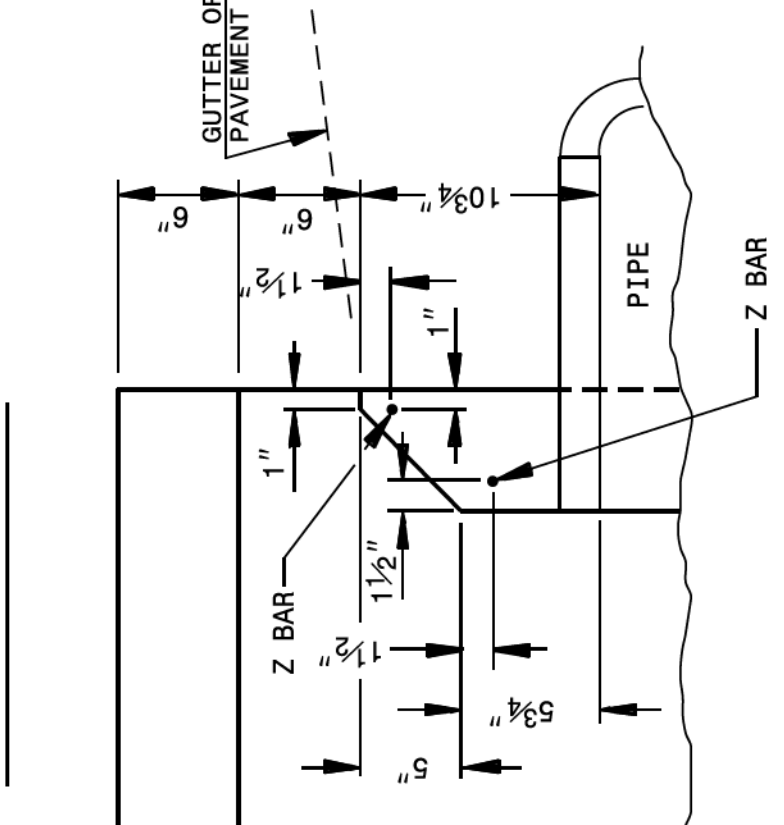
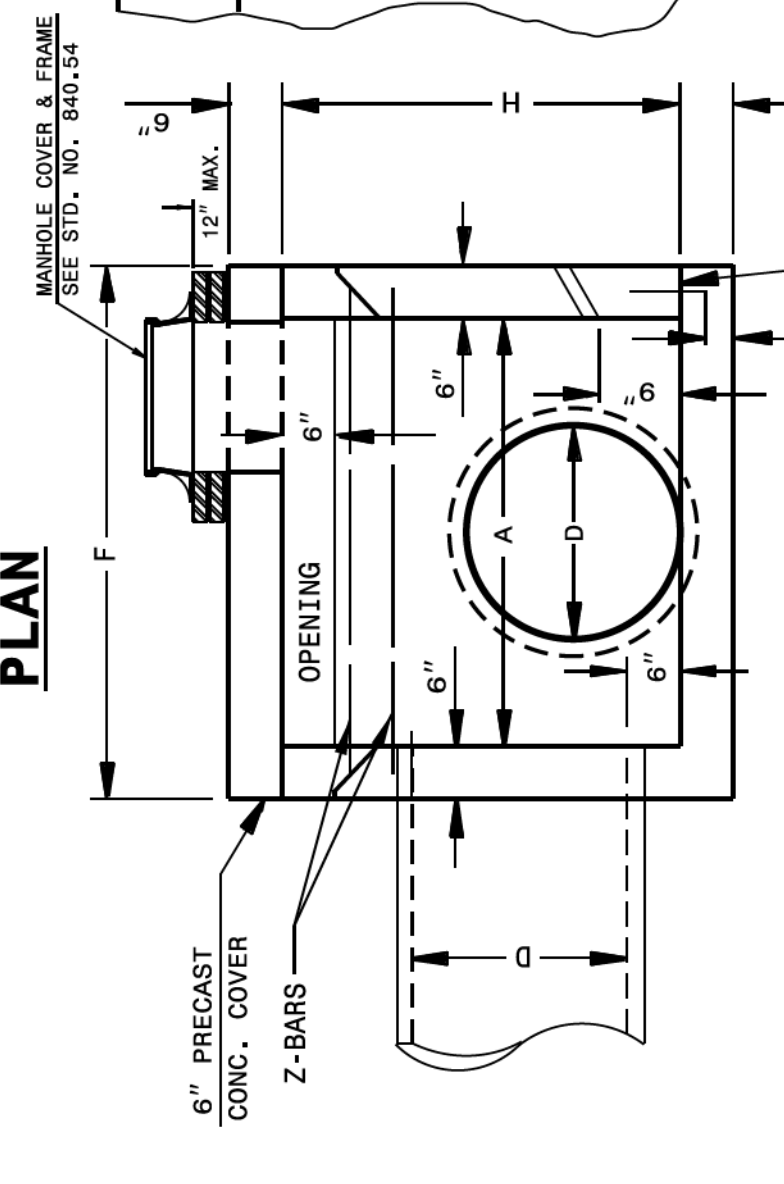
5/14/99

STATE OF NORTH CAROLINA
 DEPT. OF TRANSPORTATION
 DIVISION OF HIGHWAYS
 RALEIGH, N.C.



STATE OF NORTH CAROLINA
 DEPT. OF TRANSPORTATION
 RALEIGH, N.C.

ENGLISH DETAIL DRAWING FOR
CONCRETE CATCH BASIN
 (3 OR 4 SIDE OPEN THROAT)
 (MANHOLE OPTIONAL)



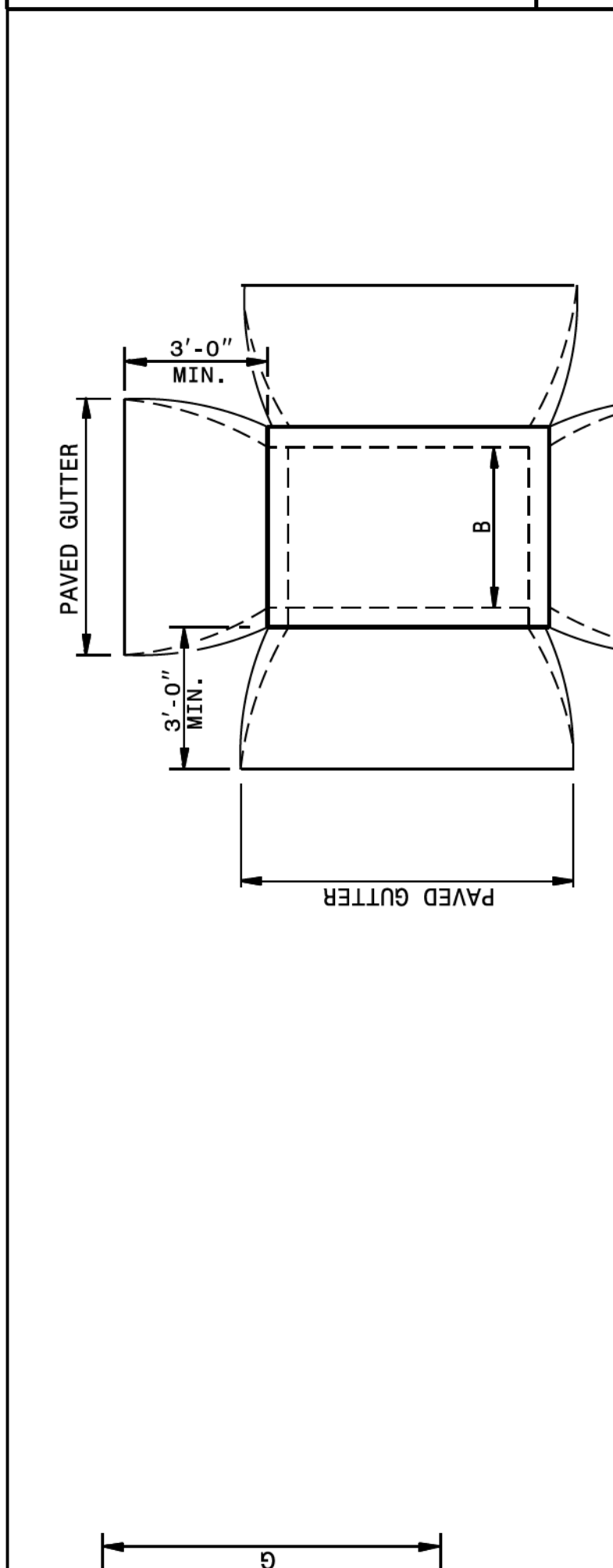
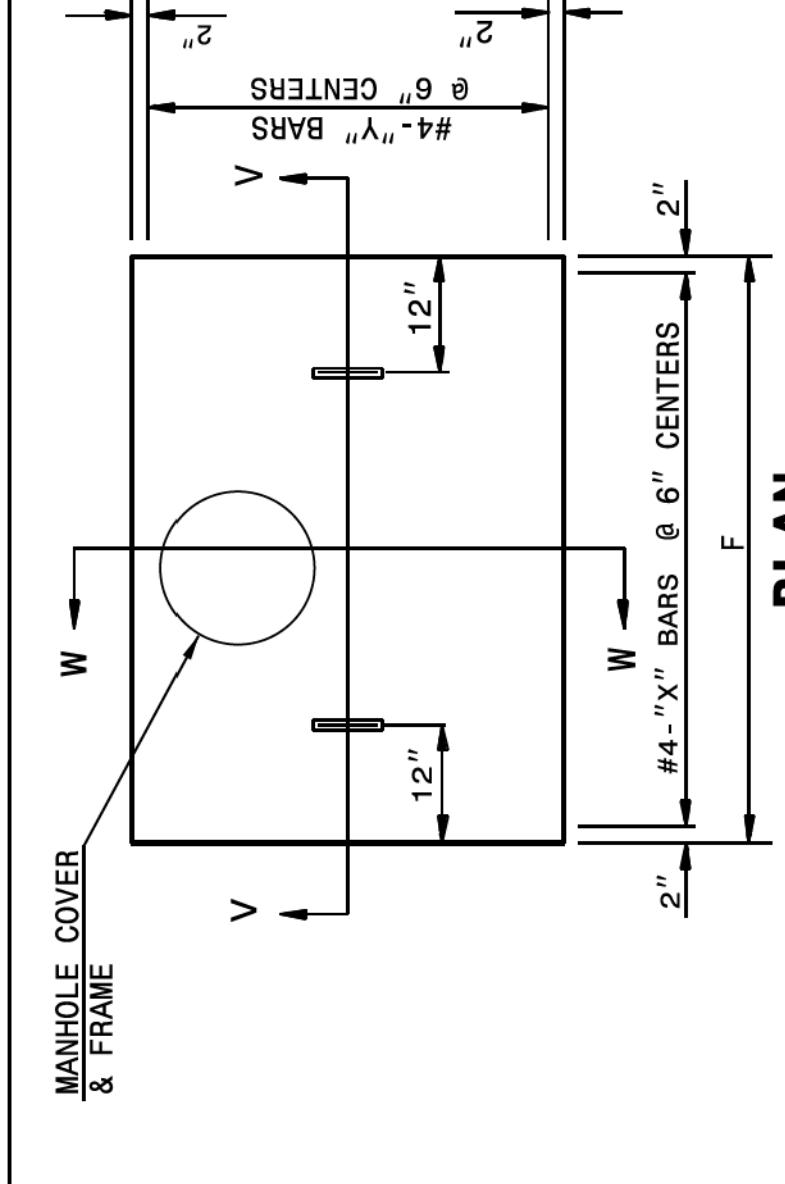
SHEET 1 OF 2
840D04

MIN. DIMENSIONS AND QUANTITIES FOR CONCRETE CATCH BASIN (BASED ON MIN. HEIGHT, H)

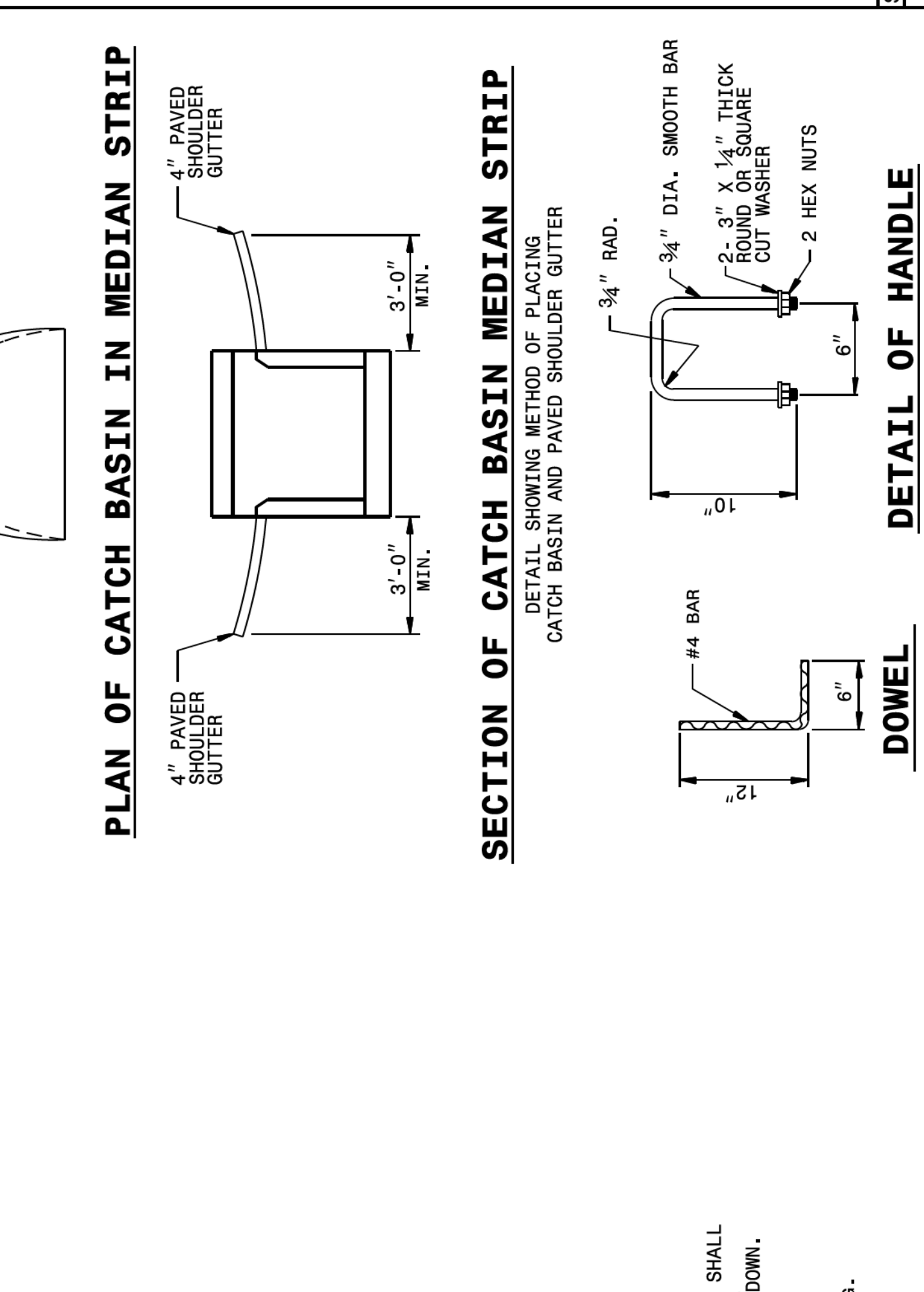
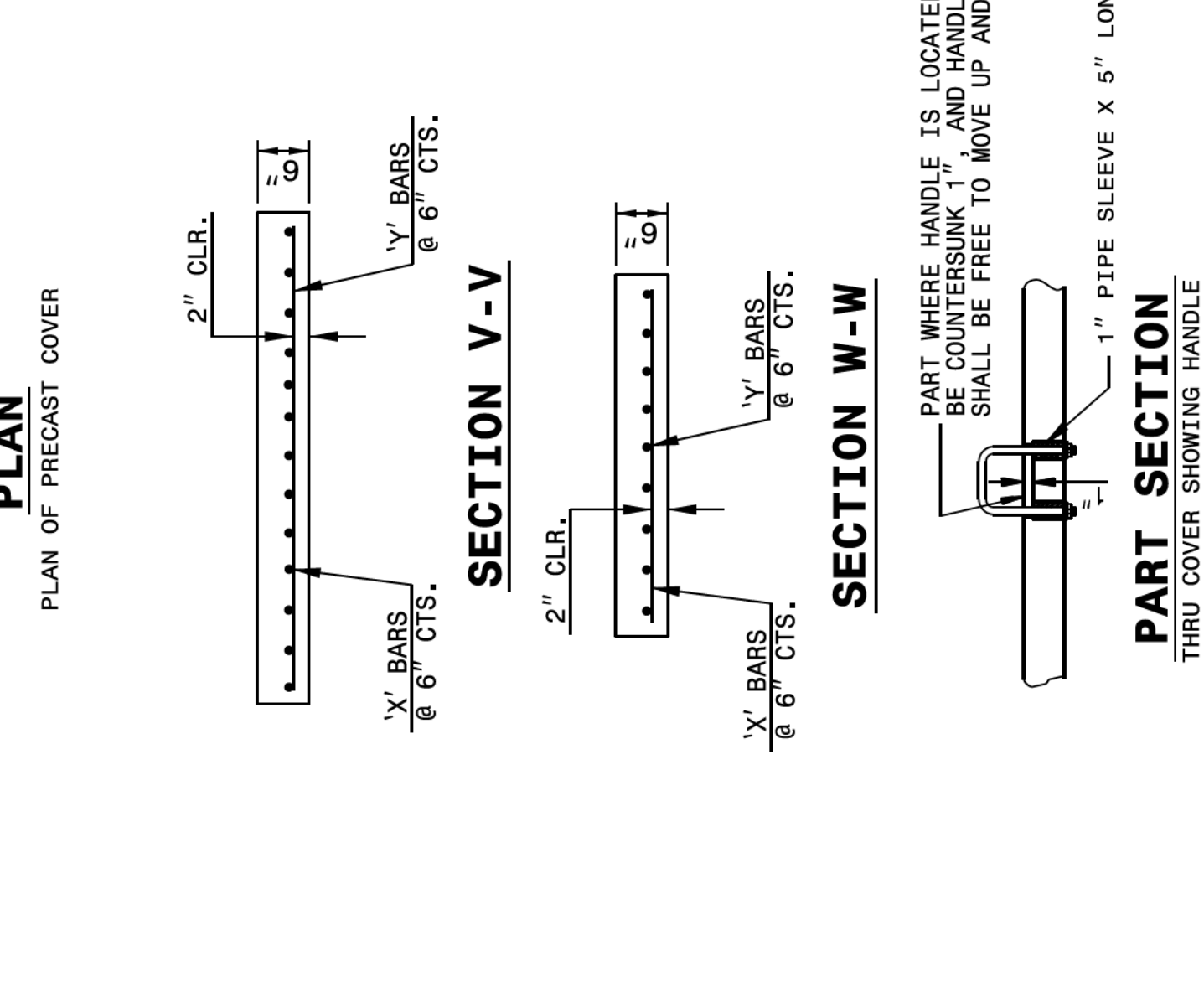
PIPE DIM'S OF BOX & PIPE	REINFORCING		TOP & BOT. SLAB DIMENSIONS		CU. YDS. CONC. IN BOX		TOTAL QUANTITIES BOX & SLABS		DEDUCTION ONE PIPE		DED. ONE 6" THROAT OPENING			
	SPAN	WIDTH	NO.	LENGTH	F	G	TOP SLAB	BOT. SLAB	CU. YDS.	REIN. (LBS.)		R. O.		
12"	3'-6"	2'-3"	4	3'-0"	6	4'-3"	0.181	0.271	0.250	27	1.046	0.015	0.032	0.046
15"	3'-6"	2'-3"	4	3'-0"	6	4'-3"	0.181	0.271	0.250	27	1.108	0.023	0.036	0.046
18"	4'-0"	2'-8"	5	3'-5"	7	4'-9"	0.226	0.340	0.284	35	1.379	0.033	0.049	0.063
24"	4'-0"	2'-8"	5	3'-5"	7	4'-9"	0.226	0.340	0.284	35	1.521	0.059	0.085	0.063
30"	4'-0"	3'-6"	5	4'-3"	9	4'-9"	0.278	0.417	0.315	43	1.916	0.092	0.127	0.063
36"	4'-6"	4'-0"	5	4'-9"	10	5'-3"	0.340	0.510	0.362	51	2.390	0.132	0.178	0.066
42"	5'-0"	4'-6"	5	5'-3"	12	5'-9"	0.407	0.611	0.389	64	2.914	0.180	0.243	0.066
48"	5'-0"	5'-0"	5	5'-9"	13	5'-9"	0.444	0.666	0.407	68	3.298	0.235	0.317	0.066

SHEET 1 OF 2
840D04

STATE OF NORTH CAROLINA
 DEPT. OF TRANSPORTATION
 DIVISION OF HIGHWAYS
 RALEIGH, N.C.



ENGLISH DETAIL DRAWING FOR
CONCRETE CATCH BASIN
 (3 OR 4 SIDE OPEN THROAT)
 (MANHOLE OPTIONAL)

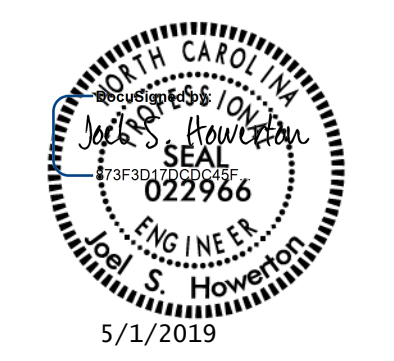


SHEET 2 OF 2
840D04

CONTRACT STANDARDS AND DEVELOPMENT UNIT
 Office 919-707-6950 FAX 919-250-4119

SEE PLATE FOR TITLE

ORIGINAL BY: _____ DATE: _____
 MODIFIED BY: rnbritt DATE: 07-03-2014
 CHECKED BY: _____ DATE: _____
 FILE SPEC.: details/rnbritt/english/hydro/840d04.dgn



DOCUMENT NOT CONSIDERED FINAL UNLESS ALL SIGNATURES COMPLETED