

**This electronic collection of documents is provided
for the convenience of the user
and is Not a Certified Document –**

**The documents contained herein were originally issued
and sealed by the individuals whose names and license
numbers appear on each page, on the dates appearing
with their signature on that page.**

**This file or an individual page
shall not be considered a certified document.**

TIP PROJECT: R-5812

STATE OF NORTH CAROLINA
DIVISION OF HIGHWAYS

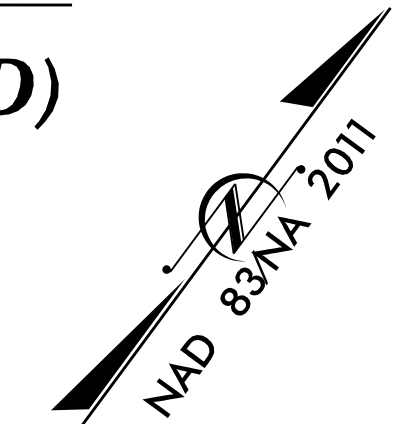
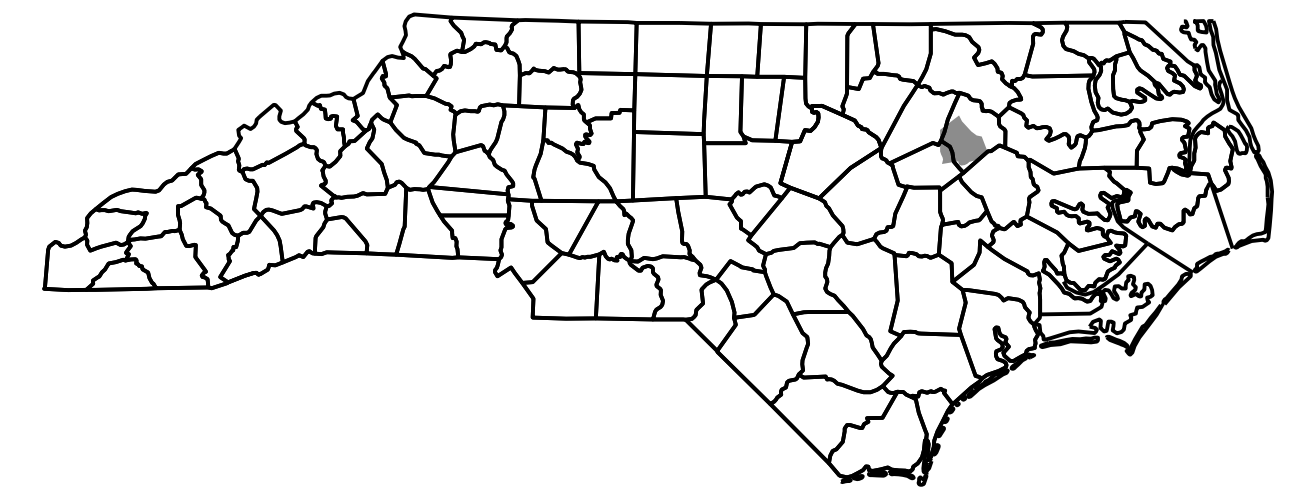
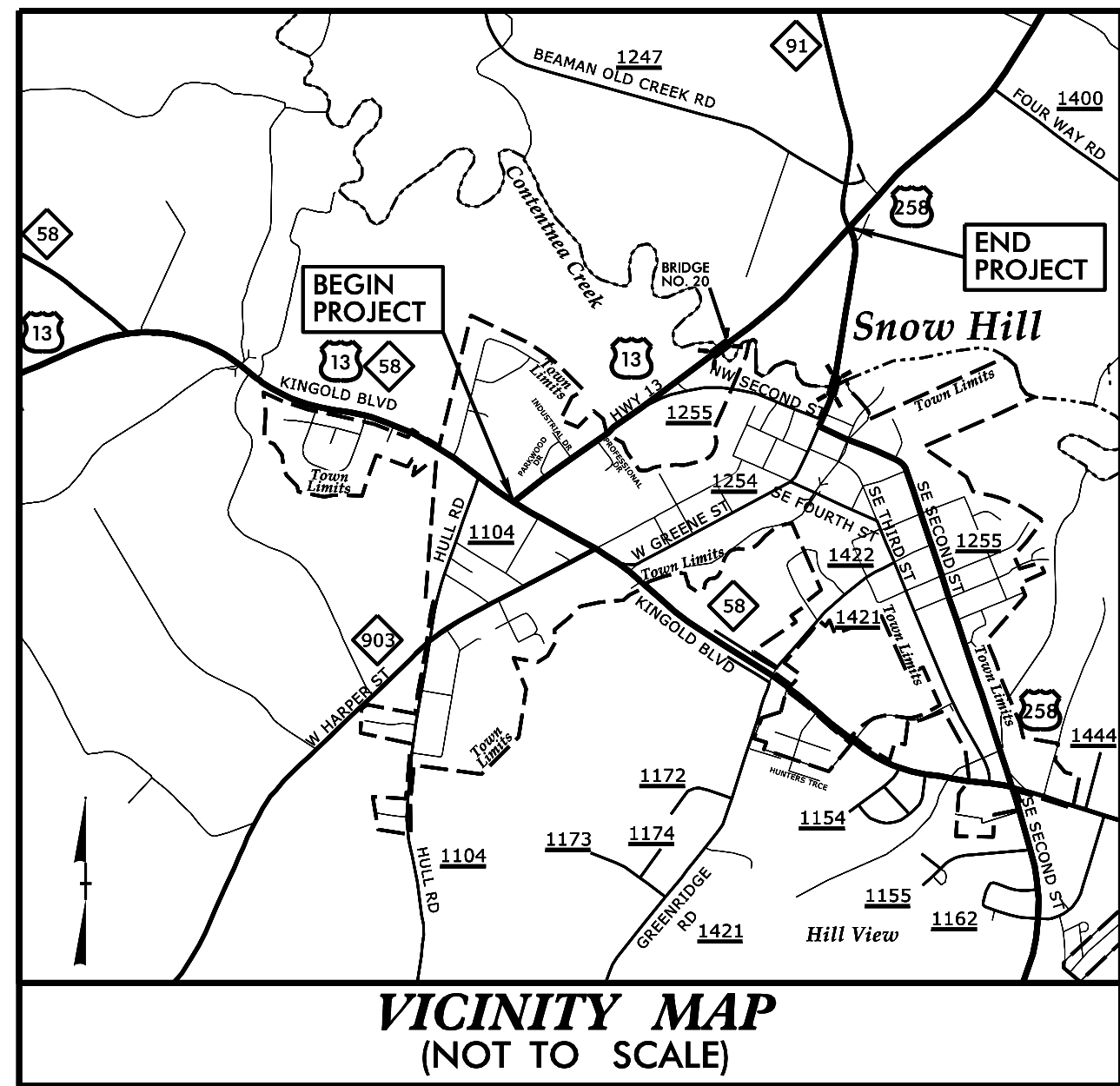
**UTILITIES BY OTHERS PLANS
GREENE COUNTY**

**LOCATION: US13 FROM NC58 (KINGOLD BLVD)
TO NC91**

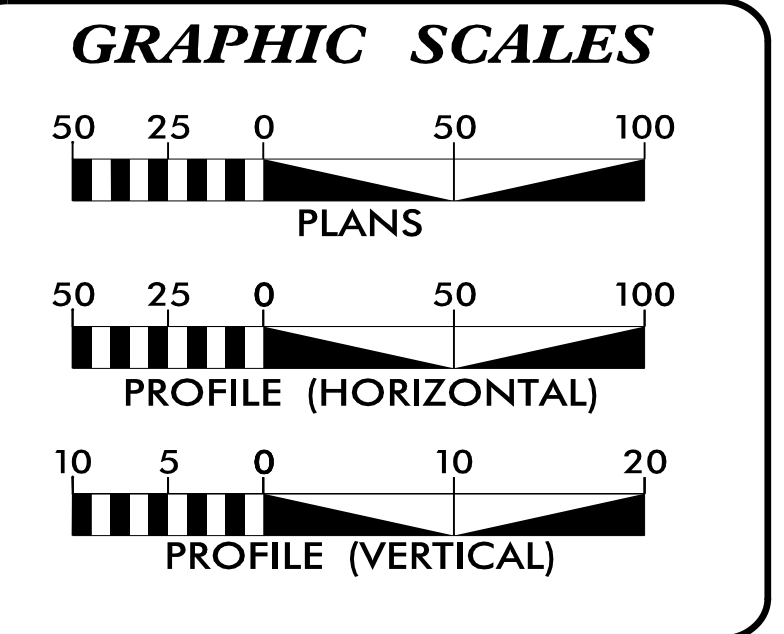
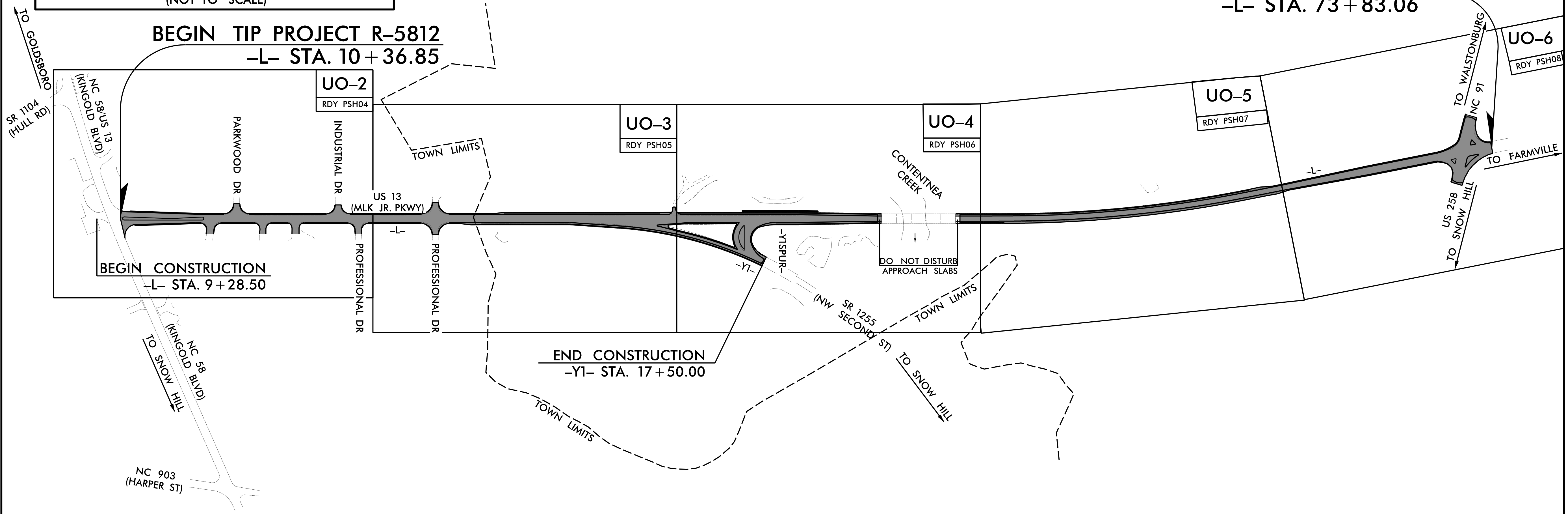
**TYPE OF WORK: RELOCATE POWER, PHONE,
FIBER AND CABLE TV**

T.I.P. NO.	SHEET NO.
R-5812	UO-1

NOTE:
ALL UTILITY WORK SHOWN ON THIS SHEET WILL BE DONE BY OTHERS. NO PAYMENT WILL BE MADE TO THE CONTRACTOR FOR UTILITY WORK SHOWN ON THIS SHEET.



**END TIP PROJECT R-5812
-L- STA. 73 + 83.06**



INDEX OF SHEETS

SHEET NO.:	DESCRIPTION:
UO-1	TITLE SHEET
UO-2 THRU UO-6	UBO PLAN SHEETS

UTILITY OWNERS WITH CONFLICTS

(A) POWER - DUKE ENERGY
(B) PHONE - CENTURYLINK
(C) FIBER - CANTERA
(D) FIBER - NFINITYLINK
(E) CATV - SPECTRUM

PREPARED IN THE OFFICE OF:

M A Engineering Consultants, Inc.
598 East Chatham Street - Suite 137
Cary, NC 27511
Phone: 919.297.0220 Fax: 919.297.0221
NC License: F-0160

ROBIN SOBHA UTILITY PROJECT MANAGER
DAVID KRAMER PROJECT UTILITY COORDINATOR

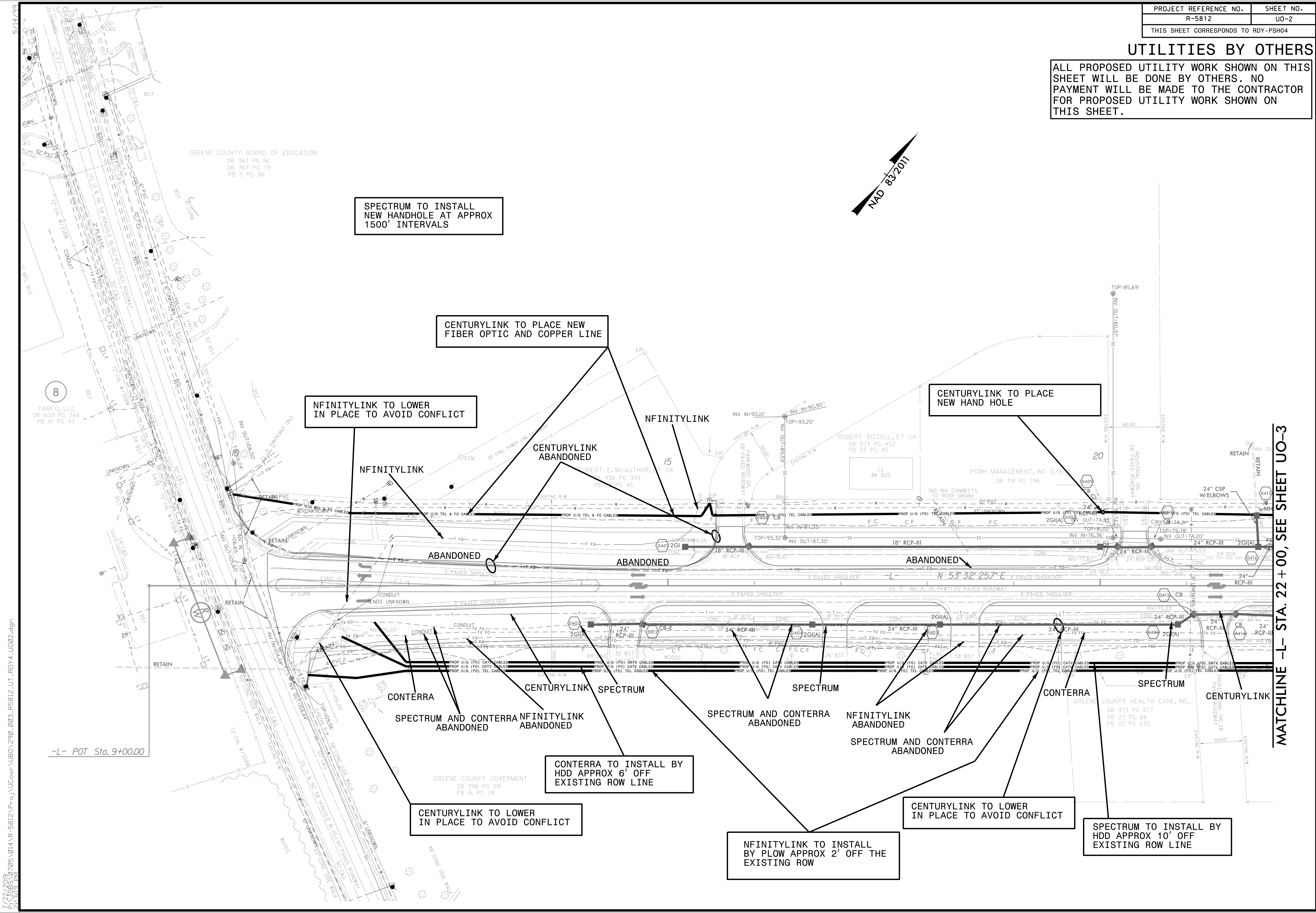
**DIVISION OF HIGHWAYS
DIVISION 02**

DIV ADDRESS:
1037 W.H. SMITH BLVD
GREENVILLE, NC 27835

CASEY WHITLEY, P.E.
DIVISION PROJECT ENGINEER

UTILITIES BY OTHERS

ALL PROPOSED UTILITY WORK SHOWN ON THIS SHEET WILL BE DONE BY OTHERS. NO PAYMENT WILL BE MADE TO THE CONTRACTOR FOR PROPOSED UTILITY WORK SHOWN ON THIS SHEET.

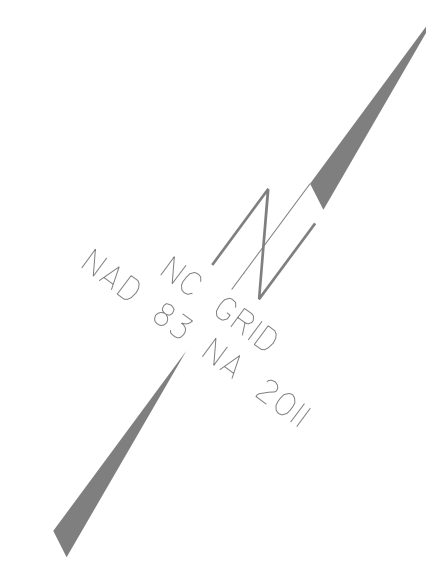


MATCHLINE -L- STA. 22 + 00, SEE SHEET UO-3

7/22/2016 10:57:05 \\014.NP-r-5812\Nucor-LIB01290_003_R5812_UT_RDY4_U002.dgn

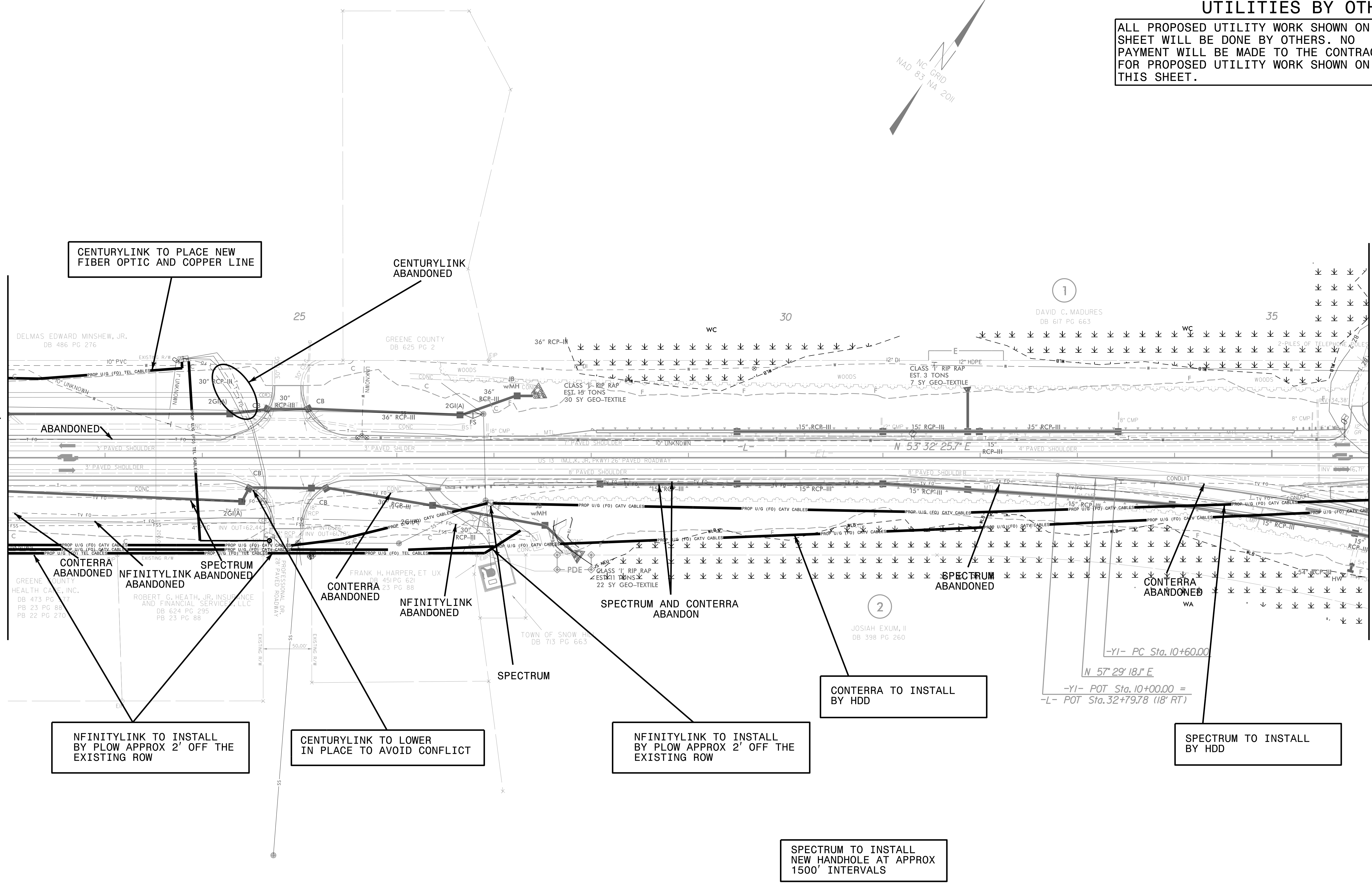
UTILITIES BY OTHERS

ALL PROPOSED UTILITY WORK SHOWN ON THIS SHEET WILL BE DONE BY OTHERS. NO PAYMENT WILL BE MADE TO THE CONTRACTOR FOR PROPOSED UTILITY WORK SHOWN ON THIS SHEET.



MATCHLINE -L- STA. 22 + 00, SEE SHEET UO 2

MATCHLINE -L- STA. 36 + 00, SEE SHEET UO 4



CENTURYLINK TO PLACE NEW FIBER OPTIC AND COPPER LINE

CENTURYLINK ABANDONED

ABANDONED

CONTRERA ABANDONED

NFINITYLINK ABANDONED

SPECTRUM ABANDONED

CONTRERA ABANDONED

NFINITYLINK ABANDONED

SPECTRUM AND CONTRERA ABANDON

SPECTRUM ABANDONED

CONTRERA ABANDONED

NFINITYLINK TO INSTALL BY PLOW APPROX 2' OFF THE EXISTING ROW

CENTURYLINK TO LOWER IN PLACE TO AVOID CONFLICT

NFINITYLINK TO INSTALL BY PLOW APPROX 2' OFF THE EXISTING ROW

CONTRERA TO INSTALL BY HDD

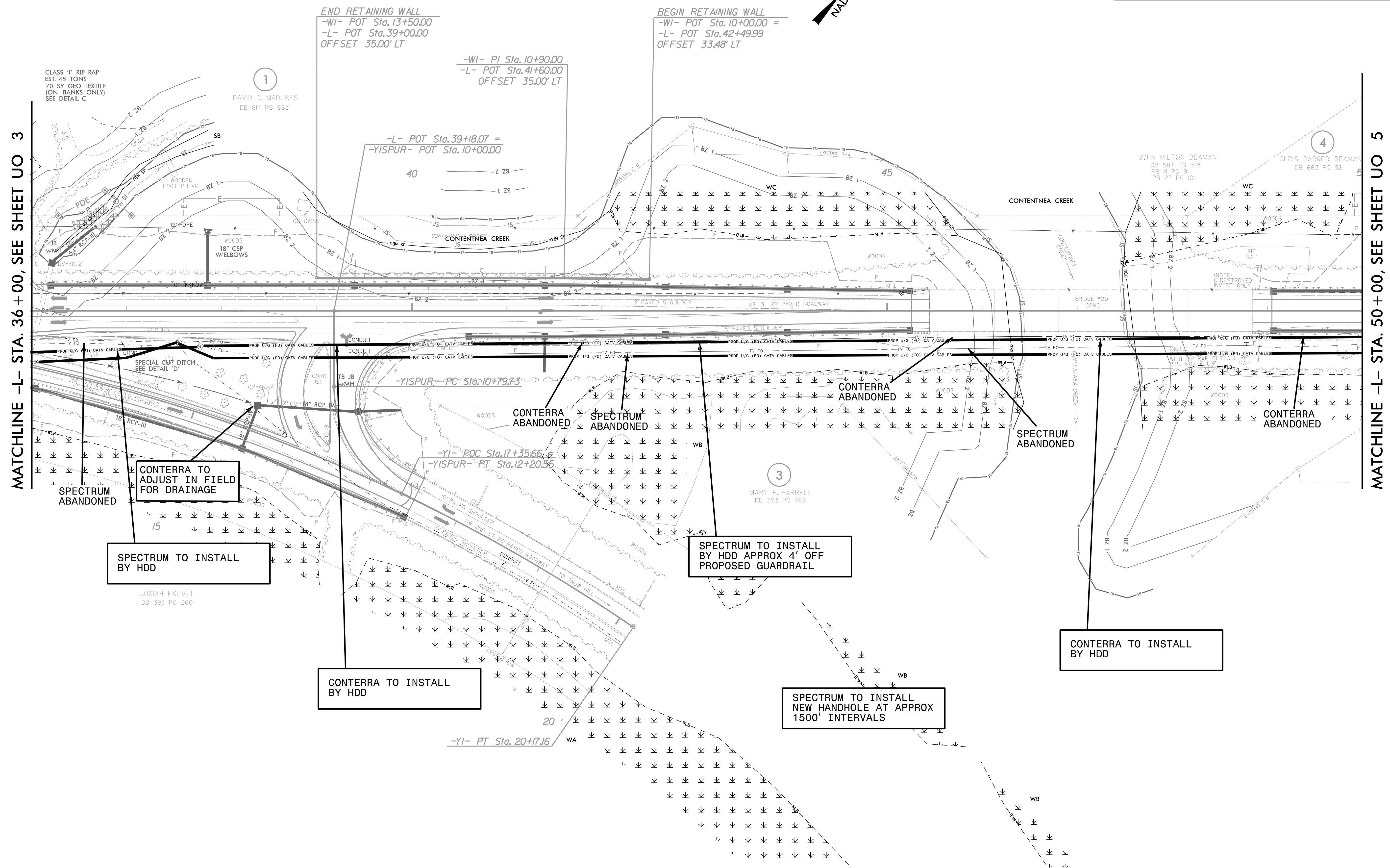
SPECTRUM TO INSTALL BY HDD

SPECTRUM TO INSTALL NEW HANDHOLE AT APPROX 1500' INTERVALS

5/14/2016
 P:\2015\705\014\RDY-5812\RDY-5812_UO-3.dgn
 P:\2015\705\014\RDY-5812\RDY-5812_UO-3.dgn
 P:\2015\705\014\RDY-5812\RDY-5812_UO-3.dgn

UTILITIES BY OTHERS

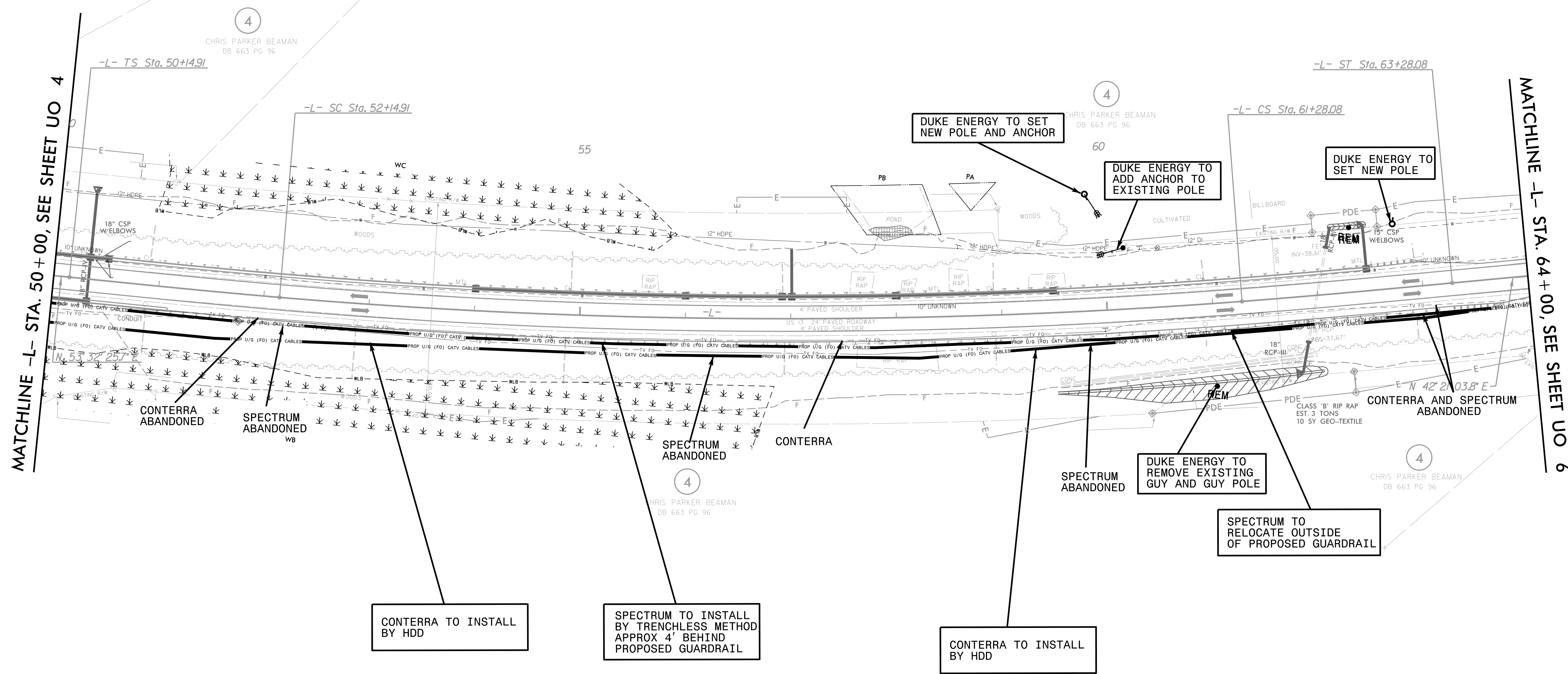
ALL PROPOSED UTILITY WORK SHOWN ON THIS SHEET WILL BE DONE BY OTHERS. NO PAYMENT WILL BE MADE TO THE CONTRACTOR FOR PROPOSED UTILITY WORK SHOWN ON THIS SHEET.



5/14/2011
 7/22/2010
 P:\05\0705\014\A-R-5812\A-R-5812\A-R-5812_UT_RDY6_UO04.dgn
 2:38:53 PM

UTILITIES BY OTHERS

ALL PROPOSED UTILITY WORK SHOWN ON THIS SHEET WILL BE DONE BY OTHERS. NO PAYMENT WILL BE MADE TO THE CONTRACTOR FOR PROPOSED UTILITY WORK SHOWN ON THIS SHEET.



MATCHLINE -L- STA. 50 + 00, SEE SHEET UO 4

MATCHLINE -L- STA. 64 + 00, SEE SHEET UO 6

CONTERRA TO INSTALL BY HDD

SPECTRUM TO INSTALL BY TRENCHLESS METHOD APPROX 4' BEHIND PROPOSED GUARDRAIL

CONTERRA TO INSTALL BY HDD

DUKE ENERGY TO SET NEW POLE AND ANCHOR

DUKE ENERGY TO ADD ANCHOR TO EXISTING POLE

DUKE ENERGY TO SET NEW POLE

DUKE ENERGY TO REMOVE EXISTING GUY AND GUY POLE

SPECTRUM TO RELOCATE OUTSIDE OF PROPOSED GUARDRAIL

CONTERRA ABANDONED

SPECTRUM ABANDONED WB

SPECTRUM ABANDONED

CONTERRA

SPECTRUM ABANDONED

CONTERRA AND SPECTRUM ABANDONED

5/14/2018
 7:22:30 AM
 P:\05\0705\014\A-R-5812\A-R-5812\A-R-5812\A-R-5812\UT_UT_RDY7_UO05.dgn
 2:44:35 PM

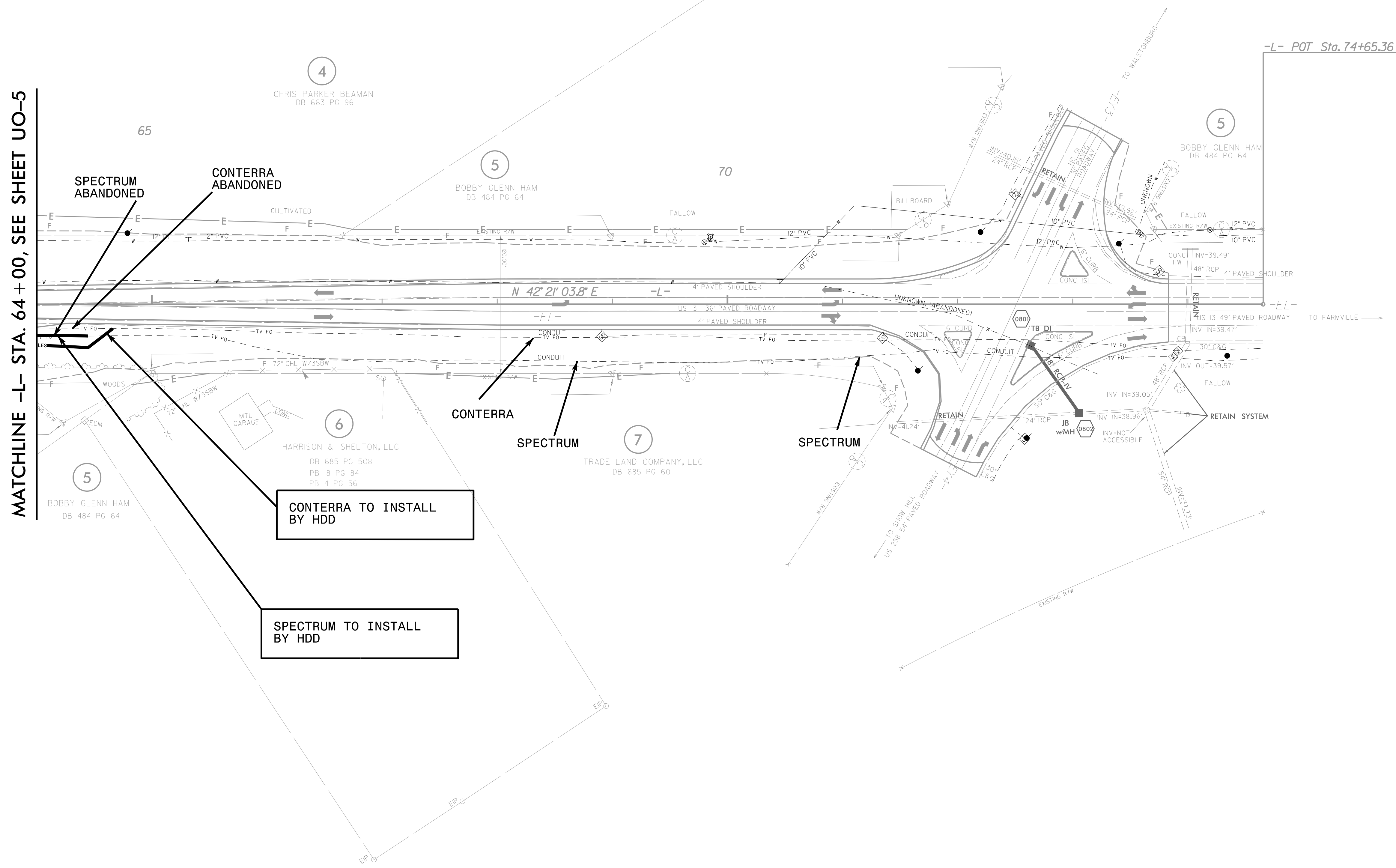
UTILITIES BY OTHERS

ALL PROPOSED UTILITY WORK SHOWN ON THIS SHEET WILL BE DONE BY OTHERS. NO PAYMENT WILL BE MADE TO THE CONTRACTOR FOR PROPOSED UTILITY WORK SHOWN ON THIS SHEET.



SPECTRUM TO INSTALL NEW HANDHOLE AT APPROX 1500' INTERVALS

MATCHLINE -L- STA. 64 + 00, SEE SHEET UO-5



CONTERRA TO INSTALL BY HDD

SPECTRUM TO INSTALL BY HDD

5/14/09
 7/22/2018
 P:\05\050705\014\1-R-5812\1-R-5812\1-UT-RDY8.UO06.dgn
 2:53:08 PM