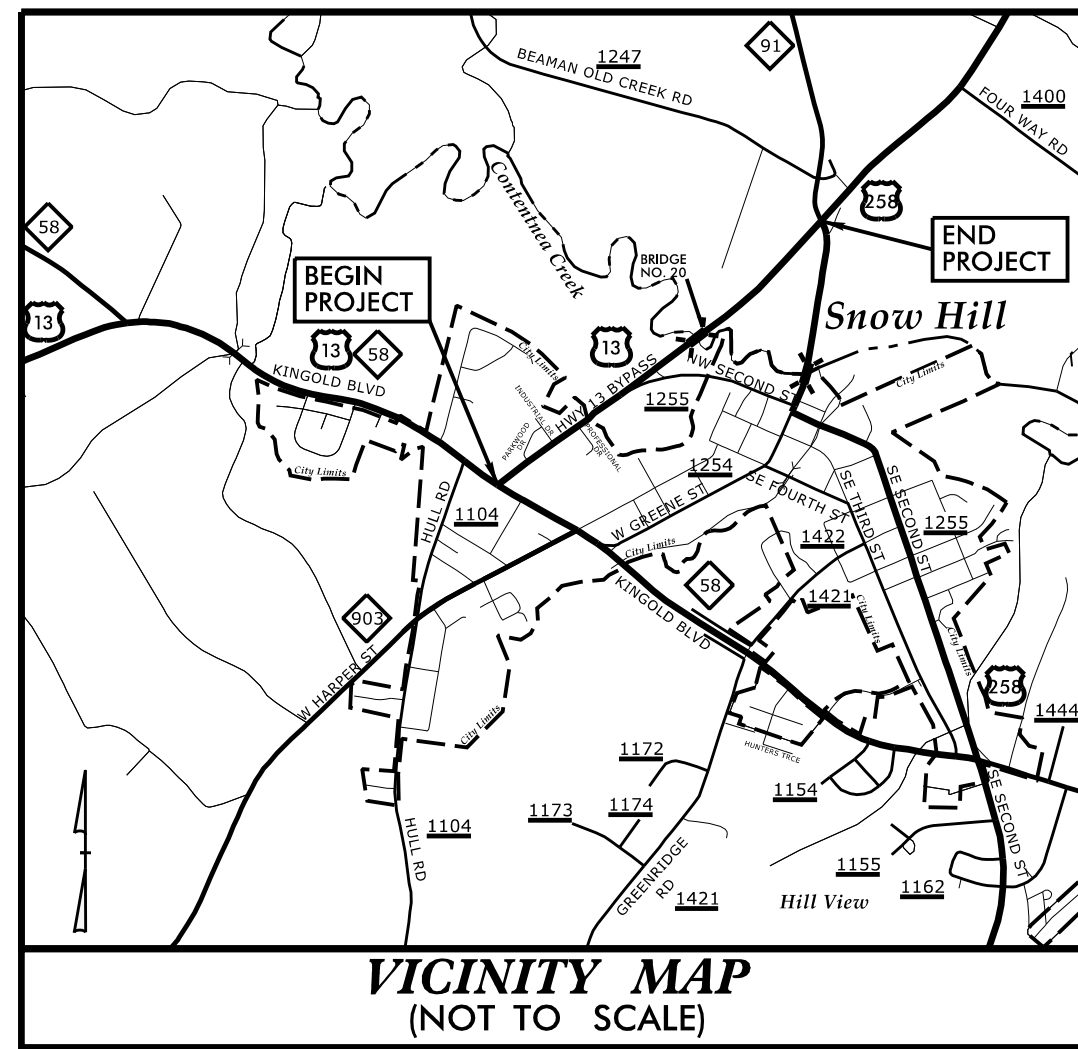


**This electronic collection of documents is provided
for the convenience of the user
and is Not a Certified Document –**

**The documents contained herein were originally issued
and sealed by the individuals whose names and license
numbers appear on each page, on the dates appearing
with their signature on that page.**

**This file or an individual page
shall not be considered a certified document.**

TIP PROJECT: R-5812



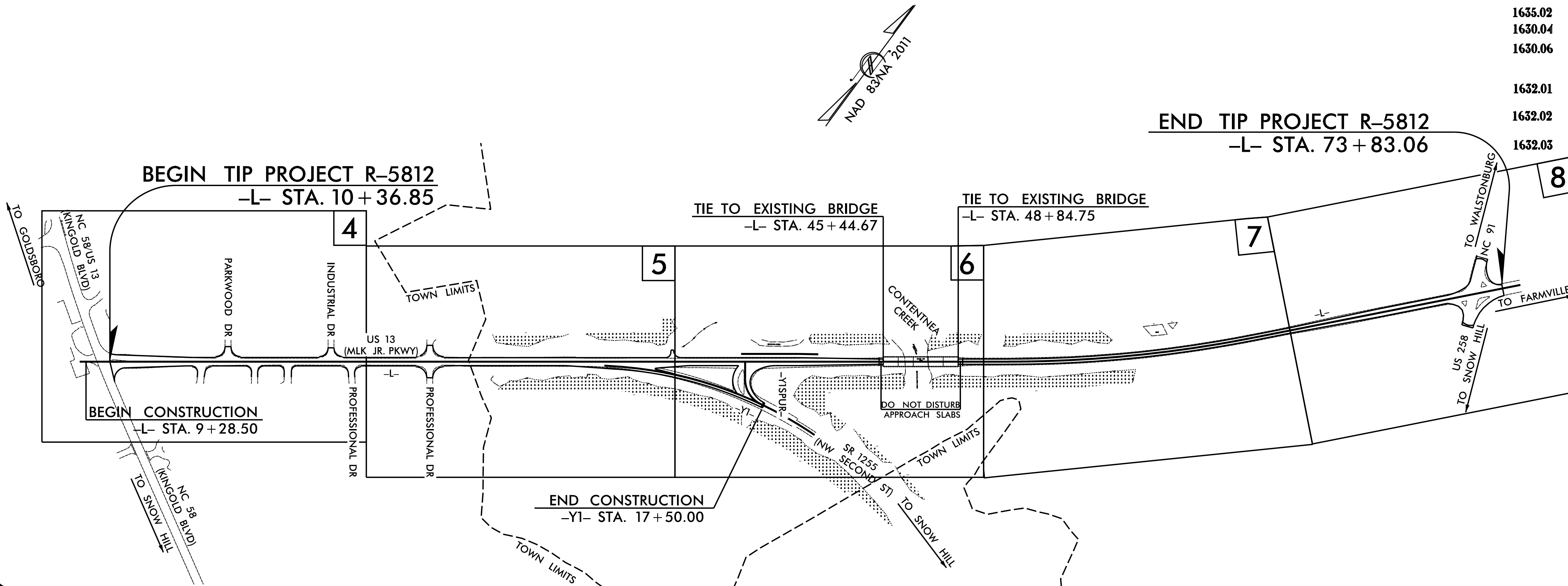
STATE OF NORTH CAROLINA
DIVISION OF HIGHWAYS
PLAN FOR PROPOSED
HIGHWAY EROSION CONTROL
GREENE COUNTY

LOCATION: US 13 FROM NC 58 (KINGOLD BOULEVARD) TO NC 91
TYPE OF WORK: GRADING, PAVING, DRAINAGE, RETAINING WALL, AND SIGNALS

STATE	STATE PROJECT REFERENCE NO.	SHEET NO.	TOTAL SHEETS
N.C.	R-5812	EC-1	
STATE PROJ. NO.	F.A. PROJ. NO.	DESCRIPTION	
46981.1.1	N/A	P.E.	
46981.2.1	N/A	R/W & UTILITIES	

EROSION AND SEDIMENT CONTROL MEASURES

Sid. #	Description	Symbol
1630.03	Temporary Silt Ditch	TD
1630.05	Temporary Diversion	TD
1605.01	Temporary Silt Fence	III III III
1606.01	Special Sediment Control Fence	III III III
1622.01	Temporary Berms and Slope Drains	TD
1630.02	Silt Basin Type B	SB
1633.01	Temporary Rock Silt Check Type-A	RS
	Temporary Rock Silt Check Type-A with Matting and Polyacrylamide (PAM)	RS
1633.02	Temporary Rock Silt Check Type-B	RS
	Wattle/Coir Fiber Wattle	WF
	Wattle/Coir Fiber Wattle with Polyacrylamide (PAM)	WF
1634.01	Temporary Rock Sediment Dam Type-A	RD
1634.02	Temporary Rock Sediment Dam Type-B	RD
1635.01	Rock Pipe Inlet Sediment Trap Type-A	RPI
1635.02	Rock Pipe Inlet Sediment Trap Type-B	RPI
1630.04	Stilling Basin	SB
1630.06	Special Stilling Basin	SB
	Rock Inlet Sediment Trap:	
1632.01	Type A	A
1632.02	Type B	B
1632.03	Type C	C
	Skimmer Basin	SK
	Tiered Skimmer Basin	SK
	Infiltration Basin	IB

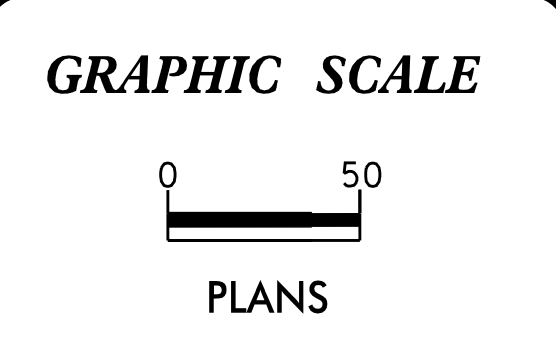


THIS PROJECT CONTAINS EROSION CONTROL PLANS FOR CLEARING AND GRUBBING PHASE OF CONSTRUCTION.

THIS PROJECT HAS BEEN DESIGNED TO SENSITIVE WATERSHED STANDARDS.

ENVIRONMENTALLY SENSITIVE AREA(S) EXIST ON THIS PROJECT

Refer To E. C. Special Provisions for Special Considerations.



THESE EROSION AND SEDIMENT CONTROL PLANS COMPLY WITH THE REGULATIONS SET FORTH BY THE NCG-010000 GENERAL CONSTRUCTION PERMIT EFFECTIVE AUGUST 1, 2016 AND ISSUED BY THE NORTH CAROLINA DEPARTMENT OF ENVIRONMENT AND NATURAL RESOURCES DIVISION OF WATER RESOURCES.

Prepared In the Office of:

HDR

HDR Engineering, Inc. of the Carolinas
555 Fayetteville St, Suite 900
Raleigh, N.C. 27601
N.C.B.E.L.S. License Number: F-0116

Designed by:

MICHAEL MCNAMARA 4065

NAME LEVEL III CERTIFICATION NO.

Reviewed In the Office of:

ROADSIDE ENVIRONMENTAL UNIT

1 South Wilmington St.
Raleigh, NC 27611

2018 STANDARD SPECIFICATIONS

Reviewed by:

WES CHANDLER, PE

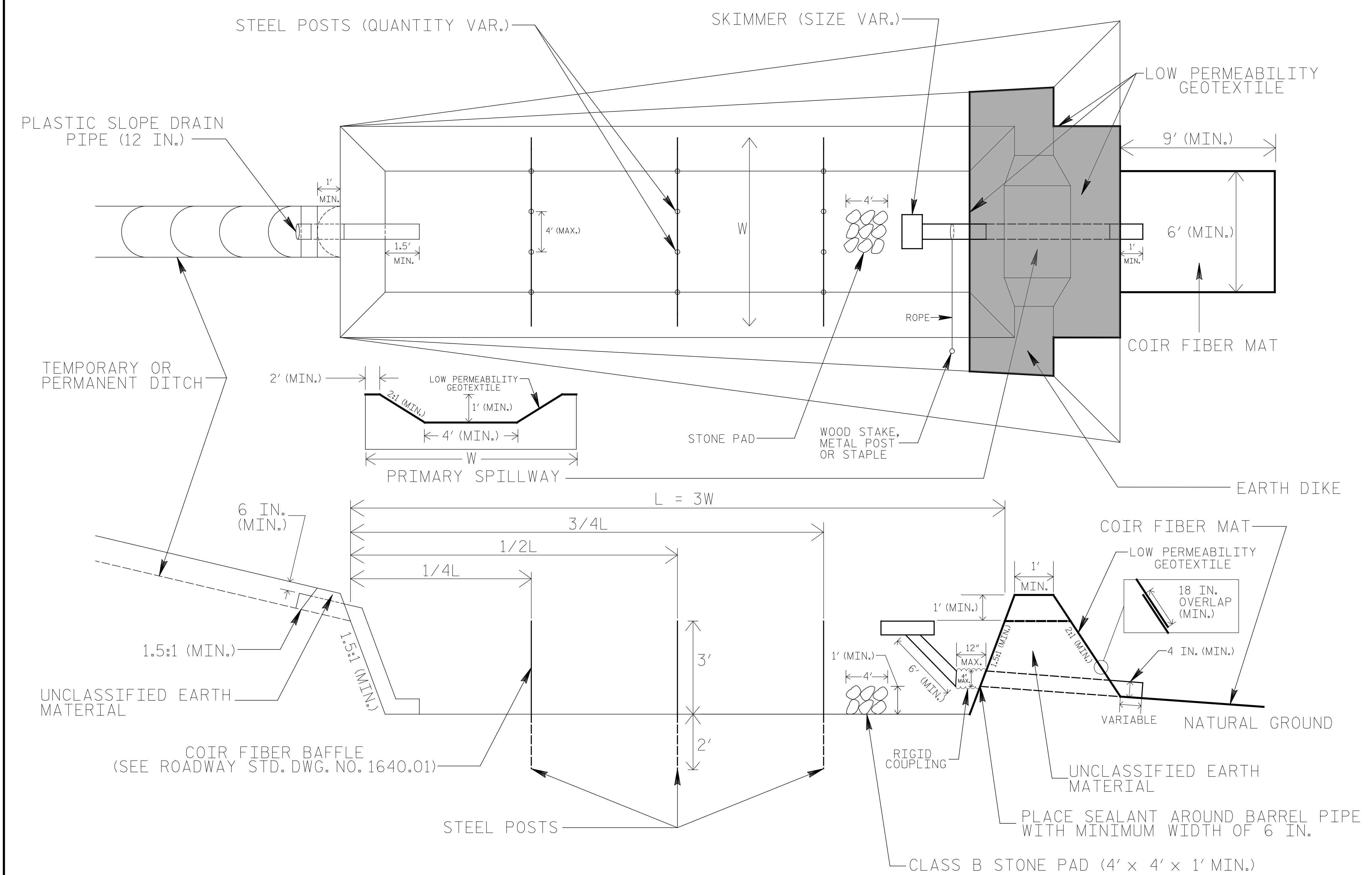
Roadway Standard Drawings

The following roadway english standards as appear in "Roadway Standard Drawings"-- Roadway Design Unit - N. C. Department of Transportation - Raleigh, N. C., dated January 2018 and the latest revision thereto are applicable to this project and by reference hereby are considered a part of these plans.

1604.01 Railroad Erosion Control Detail	1632.01 Rock Inlet Sediment Trap Type A
1605.01 Temporary Silt Fence	1632.02 Rock Inlet Sediment Trap Type B
1606.01 Special Sediment Control Fence	1632.03 Rock Inlet Sediment Trap Type C
1607.01 Gravel Construction Entrance	1633.01 Temporary Rock Silt Check Type A
1622.01 Temporary Berms and Slope Drains	1633.02 Temporary Rock Silt Check Type B
1630.01 Riser Basin	1634.01 Temporary Rock Sediment Dam Type A
1630.02 Silt Basin Type B	1634.02 Temporary Rock Sediment Dam Type B
1630.03 Temporary Silt Ditch	1635.01 Rock Pipe Inlet Sediment Trap Type A
1630.04 Stilling Basin	1635.02 Rock Pipe Inlet Sediment Trap Type B
1630.05 Temporary Diversion	1640.01 Coir Fiber Baffle
1630.06 Special Stilling Basin	1645.01 Temporary Stream Crossing
1631.01 Matting Installation	

6/14/2018 12:12:12 HYD_EC_PSH.dgn 1155522.dwg

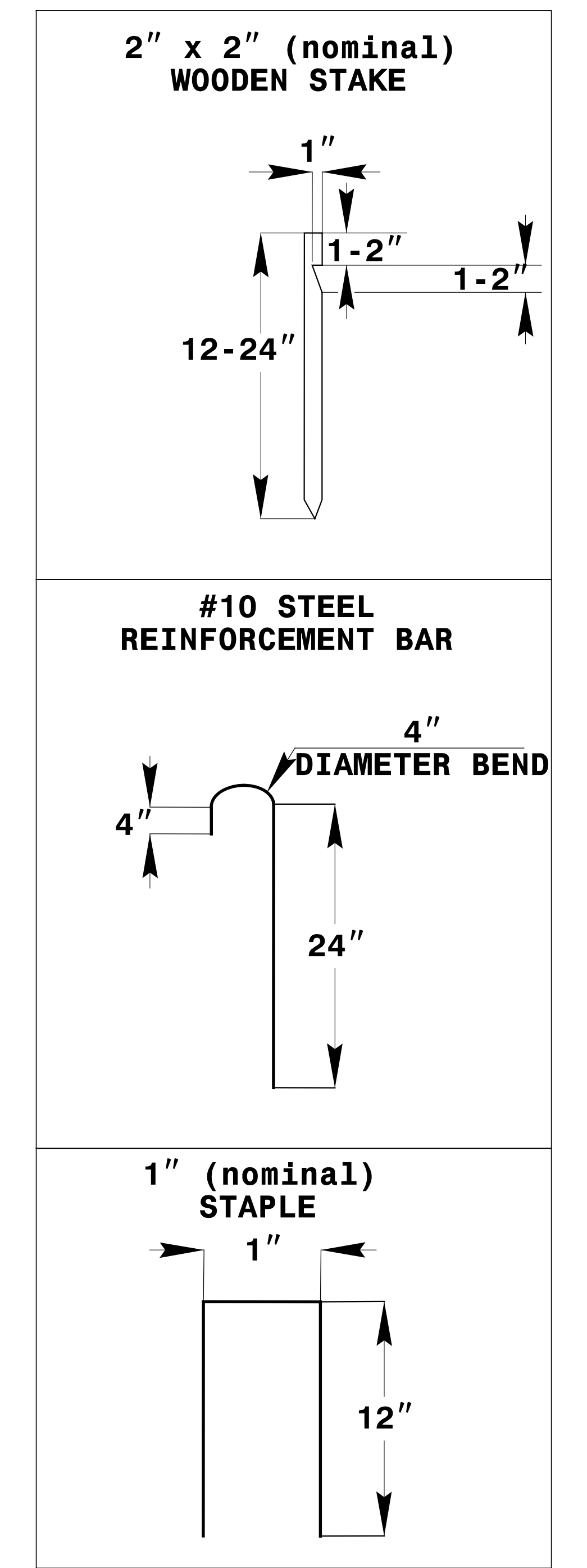
SKIMMER BASIN WITH BAFFLES DETAIL (EAST)



NOTES

1. SEED AND PLACE MATTING FOR EROSION CONTROL ON INTERIOR AND EXTERIOR SIDESLOPES.
2. LIMIT EARTH DIKE HEIGHT TO 5 FT.
3. FOR BASIN DEPTH OF 3 FT., THE MINIMUM BASIN WIDTH SHALL BE 9 FT.
4. DETERMINE PRIMARY SPILLWAY WEIR LENGTH (FT.) USING $Q/0.8$, WHERE Q IS FLOW RATE (CFS) INTO BASIN.
5. PLASTIC SLOPE DRAIN PIPE AT INLET OF BASIN MAY BE REPLACED BY FILTRATION GEOTEXTILE OR TARP AS DIRECTED.
6. LOW PERMEABILITY GEOTEXTILE FOR PRIMARY SPILLWAY SHALL BE ONE CONTINUOUS PIECE OF MATERIAL OR OVERLAPPED 18 IN. (MIN.).

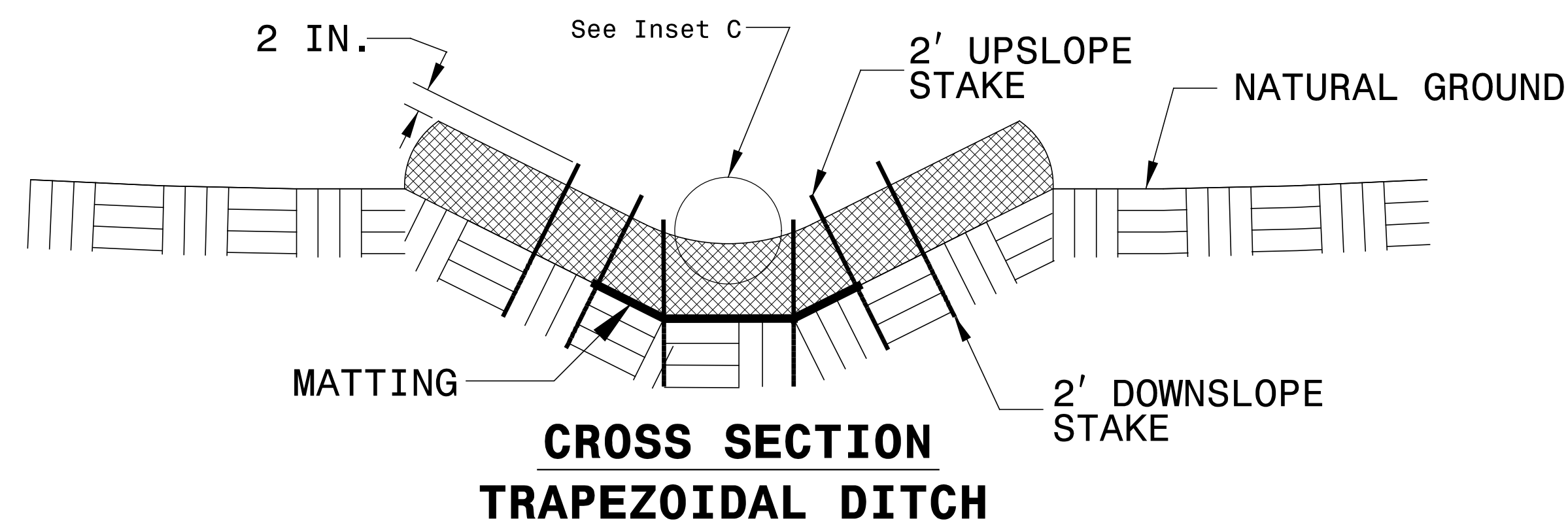
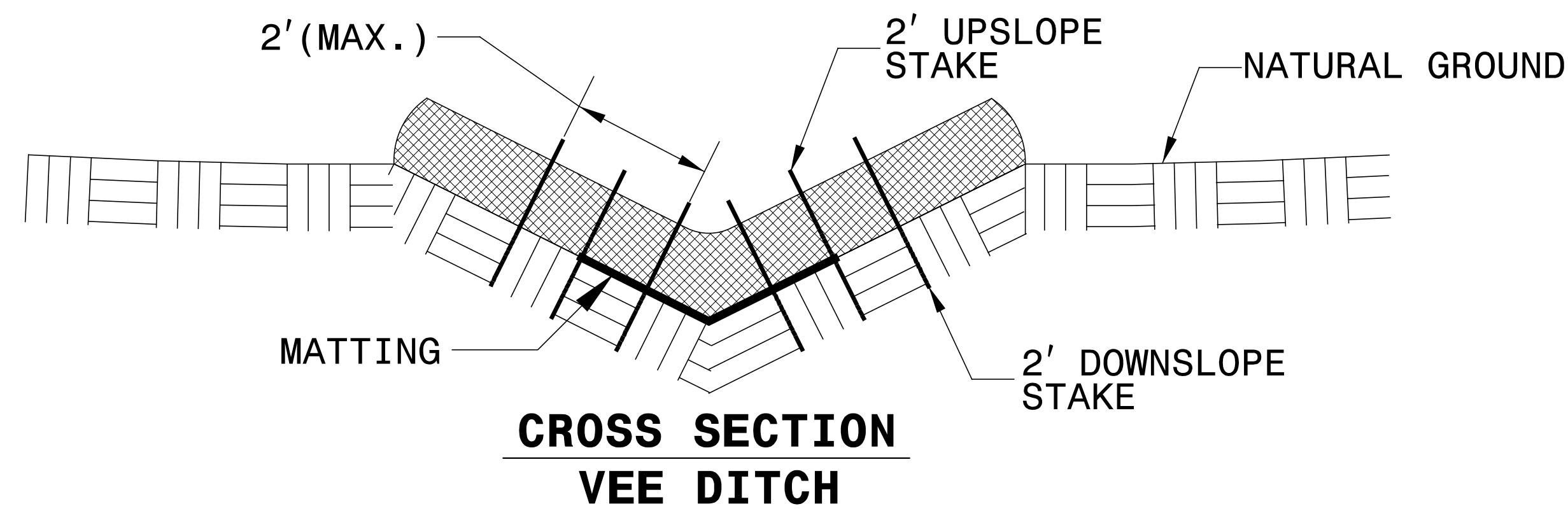
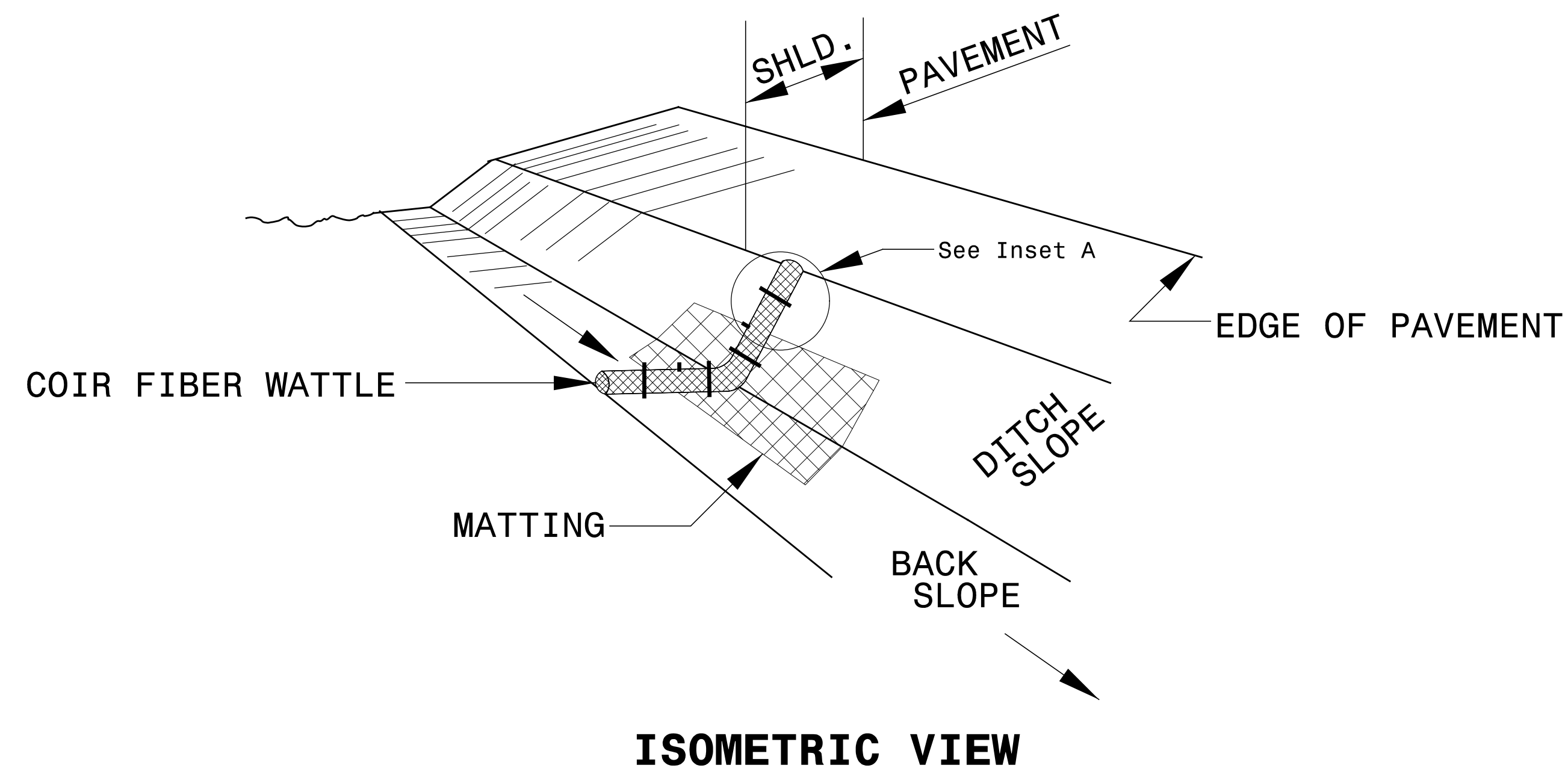
NOT TO SCALE



COIR FIBER MAT ANCHOR OPTIONS

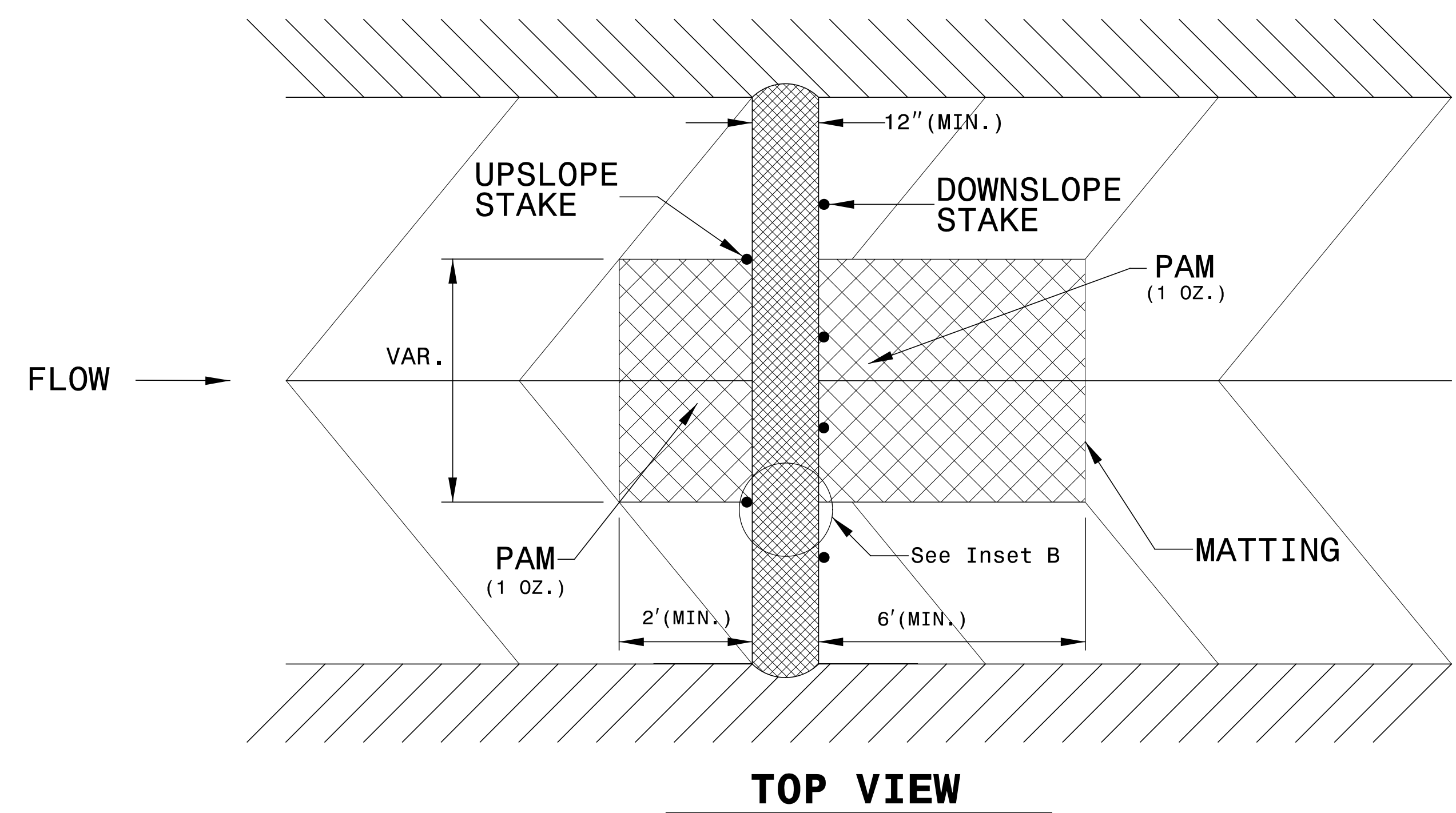
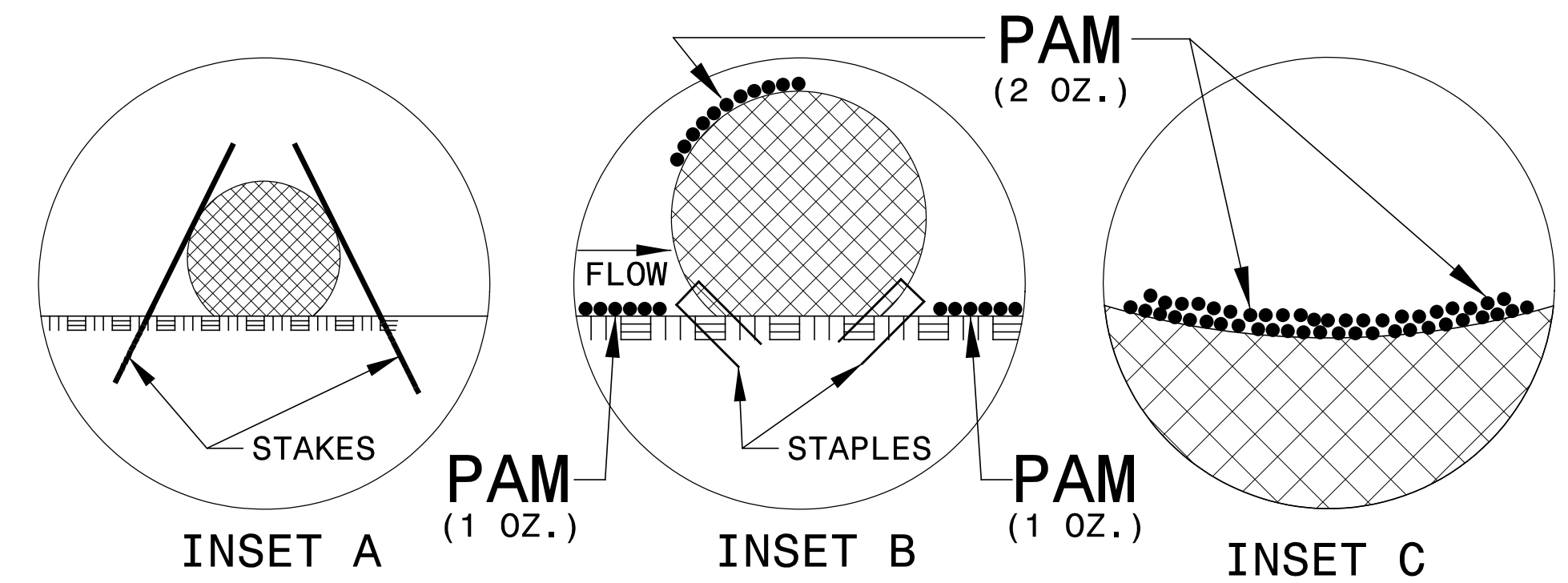
PROJECT REFERENCE NO. <i>R-5812</i>	SHEET NO. <i>EC-2B</i>
RW SHEET NO.	
ROADWAY DESIGN ENGINEER	HYDRAULICS ENGINEER

COIR FIBER WATTLE WITH POLYACRYLAMIDE (PAM) DETAIL

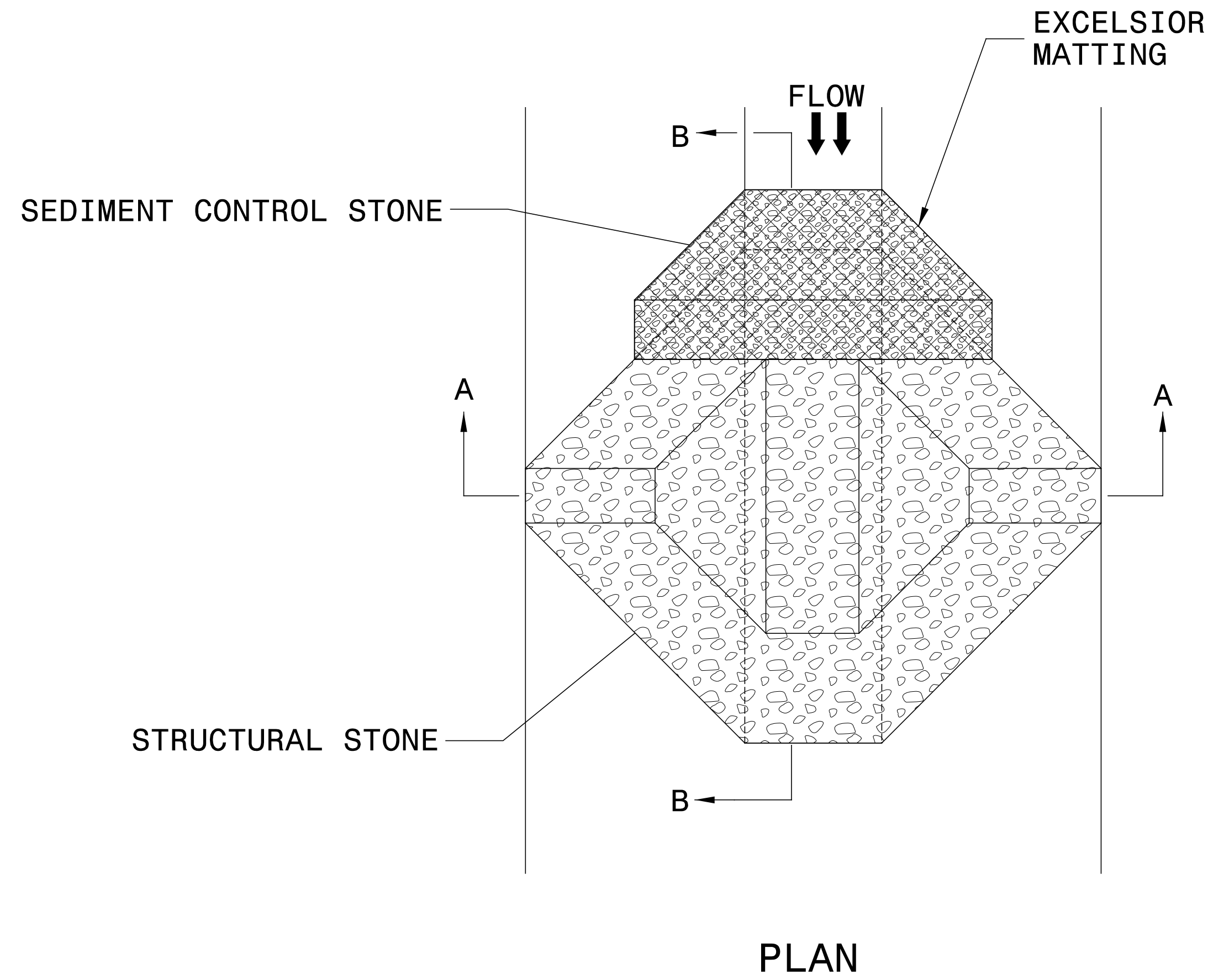


NOTES:

- USE MINIMUM 12 IN. DIAMETER COIR FIBER (COCONUT FIBER) WATTLE.
- USE 2 FT. WOODEN STAKES WITH A 2 IN. BY 2 IN. NOMINAL CROSS SECTION.
- ONLY INSTALL WATTLE(S) TO A HEIGHT IN DITCH SO FLOW WILL NOT WASH AROUND WATTLE AND SCOUR DITCH SLOPES AND AS DIRECTED.
- INSTALL A MINIMUM OF 2 UPSLOPE STAKES AND 4 DOWNSLOPE STAKES AT AN ANGLE TO WEDGE WATTLE TO BOTTOM OF DITCH.
- PROVIDE STAPLES MADE OF 0.125 IN. DIAMETER STEEL WIRE FORMED INTO A U SHAPE NOT LESS THAN 12" IN LENGTH.
- INSTALL STAPLES APPROXIMATELY EVERY 1 LINEAR FOOT ON BOTH SIDES OF WATTLE AND AT EACH END TO SECURE IT TO THE SOIL.
- INSTALL MATTING IN ACCORDANCE WITH SECTION 1631 OF THE STANDARD SPECIFICATIONS.
- PRIOR TO POLYACRYLAMIDE (PAM) APPLICATION, OBTAIN A SOIL SAMPLE FROM PROJECT LOCATION, AND FROM OFFSITE MATERIAL, AND ANALYZE FOR APPROPRIATE PAM FLOCCULANT TO BE APPLIED TO EACH WATTLE.
- INITIALLY APPLY 2 OUNCES OF ANIONIC OR NEUTRALLY CHARGED PAM OVER WATTLE WHERE WATER WILL FLOW AND 1 OUNCE OF PAM ON EACH SIDE OF WATTLE. REAPPLY PAM AFTER EVERY RAINFALL EVENT THAT IS EQUAL TO OR EXCEEDS 0.50 IN.



TEMPORARY ROCK SILT CHECK TYPE 'A' WITH EXCELSIOR MATTING AND POLYACRYLAMIDE (PAM)



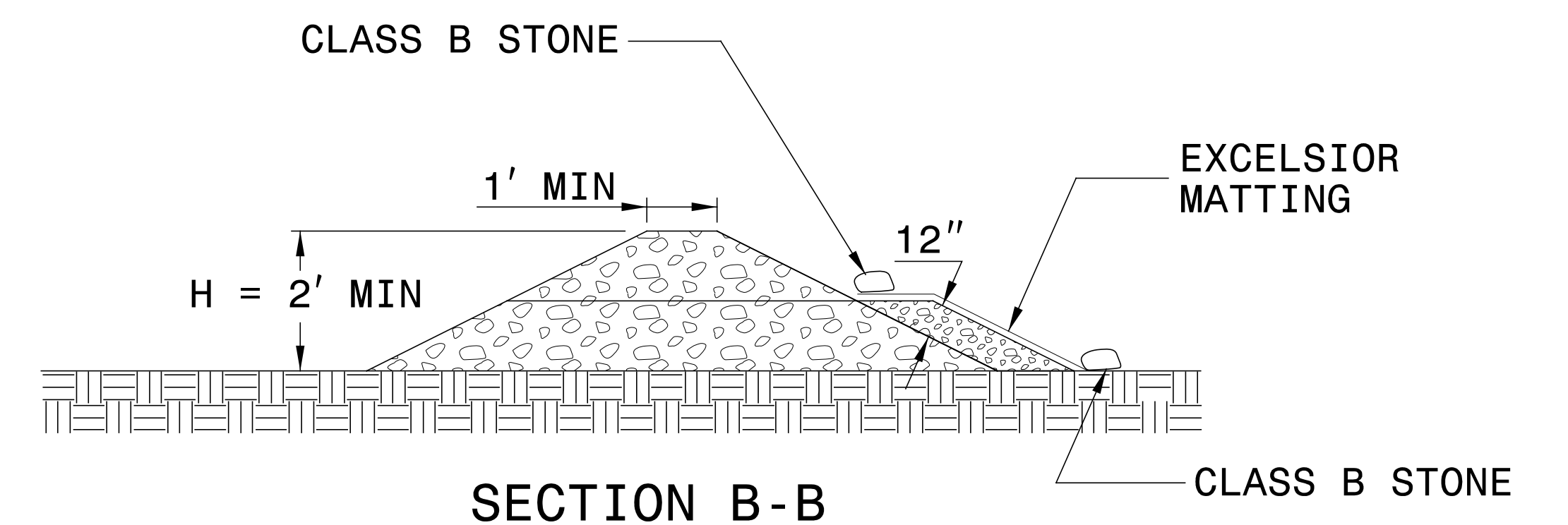
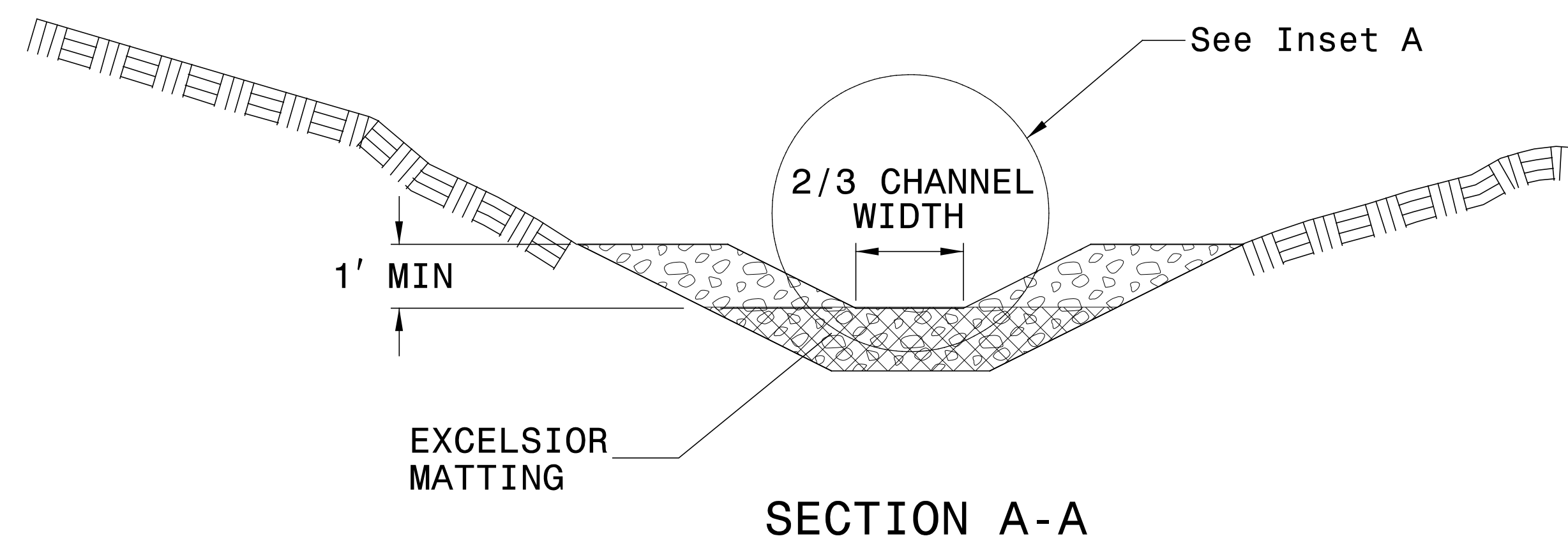
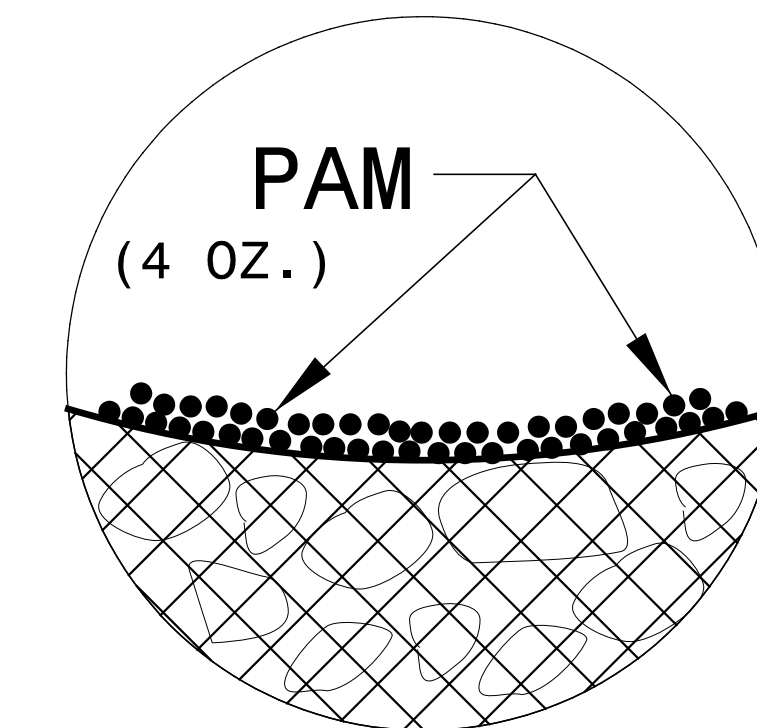
NOTES:

INSTALL TEMPORARY ROCK SILT CHECK TYPE A IN ACCORDANCE WITH ROADWAY STANDARD DRAWING NO. 1633.01.

USE EXCELSIOR FOR MATTING MATERIAL AND ANCHOR MATTING SECTION AT TOP AND BOTTOM WITH CLASS B STONE.

PRIOR TO POLYACRYLAMIDE (PAM) APPLICATION, OBTAIN A SOIL SAMPLE FROM PROJECT LOCATION, AND FROM OFFSITE MATERIAL, AND ANALYZE FOR APPROPRIATE PAM FLOCCULANT TO BE APPLIED TO EACH ROCK SILT CHECK.

INITIALLY APPLY 4 OUNCES OF POLYACRYLAMIDE (PAM) TO TOP OF MATTING SECTION AND AFTER EVERY RAINFALL EVENT THAT EQUALS OR EXCEEDS 0.50 INCHES.



NOT TO SCALE

DIVISION OF HIGHWAYS
STATE OF NORTH CAROLINA

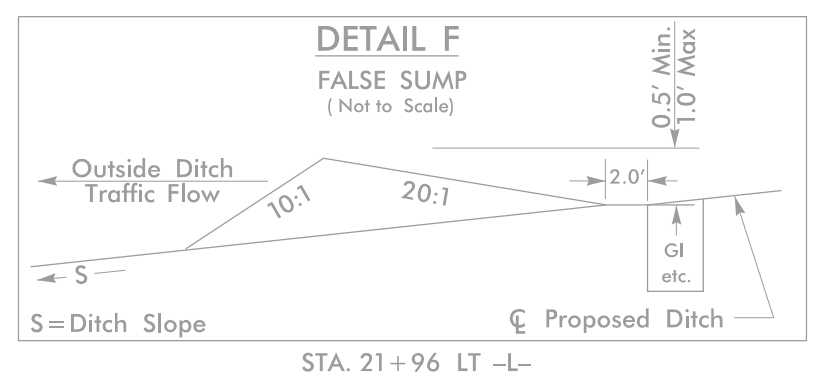
SOIL STABILIZATION TIMEFRAMES

<i>SITE DESCRIPTION</i>	<i>STABILIZATION TIME</i>	<i>TIMEFRAME EXCEPTIONS</i>
PERIMETER DIKES, SWALES, DITCHES AND SLOPES	7 DAYS	NONE
HIGH QUALITY WATER (HQW) ZONES	7 DAYS	NONE
SLOPES STEEPER THAN 3:1	7 DAYS	IF SLOPES ARE 10' OR LESS IN LENGTH AND ARE NOT STEEPER THAN 2:1, 14 DAYS ARE ALLOWED.
SLOPES 3:1 OR FLATTER	14 DAYS	7 DAYS FOR SLOPES GREATER THAN 50' IN LENGTH.
ALL OTHER AREAS WITH SLOPES FLATTER THAN 4:1	14 DAYS	NONE, EXCEPT FOR PERIMETERS AND HQW ZONES.

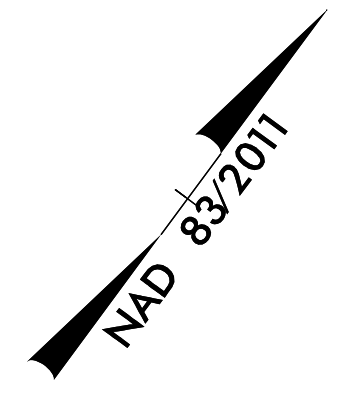
PROJECT REFERENCE NO.	SHEET NO.
R-5812	EC-04/CONST.04
RW SHEET NO.	
ROADWAY DESIGN ENGINEER	HYDRAULICS ENGINEER

HDR HDR Engineering, Inc. of the Carolinas
 555 Fayetteville St. Suite 900 Raleigh, N.C. 27601
 N.C.B.E.L.S. License Number: F-0116

**CLEARING AND GRUBBING
 EROSION CONTROL FOR
 CONSTRUCTION SHEET 04**



NOTE:
 PLACE TEMPORARY ROCK SEDIMENT DAMS TYPE - B
 AND TEMPORARY ROCK SILT CHECKS TYPE - A AT
 DRAINAGE OUTLETS.



GREENE COUNTY BOARD OF EDUCATION
 DB 367 PG 161
 DB 367 PG 79
 PB 5 PG 36

8
 YAMCO, LLC
 DB 609 PG 766
 PB 10 PG 43

**BEGIN TIP PROJECT R-5812
 -L- POT Sta. 10 +36.85**

+46.50
 55.87' LT
 EX. R/W

+28.50
 49.00' LT

+88.00
 104.00' RT

**-L- POT Sta. 9+00.00
 BEGIN CONSTRUCTION
 -L- POT Sta. 9+28.50**

GREENE COUNTY GOVERNMENT
 DB 398 PG 291
 PB 16 PG 28

GREENE COUNTY HEALTH CARE, INC.
 DB 473 PG 577
 PB 23 PG 88
 PB 22 PG 270

MATCHLINE -L- STA. 22 +00, SEE SHEET 5

DRIVEWAY RADII 50' UNLESS OTHERWISE NOTED
 SEE SHEET NO 9 FOR -L- PROFILE

PLOT DRIVER: NCDOT_pdf_color_eng_100.plt
 USER: MMCNAMARA
 FILE: NCDOT\2015\NCDOT_East_Reg_Div_Planming_Design\LSA\NCDOT-R-5812_US_13_Widening\6.0_CAD_BIM\6.2_Work\In_Progress\R-5812_Hydr\ulces\EROSTON_CONTROL_NR5812_HYD_EC_PSH.dgn

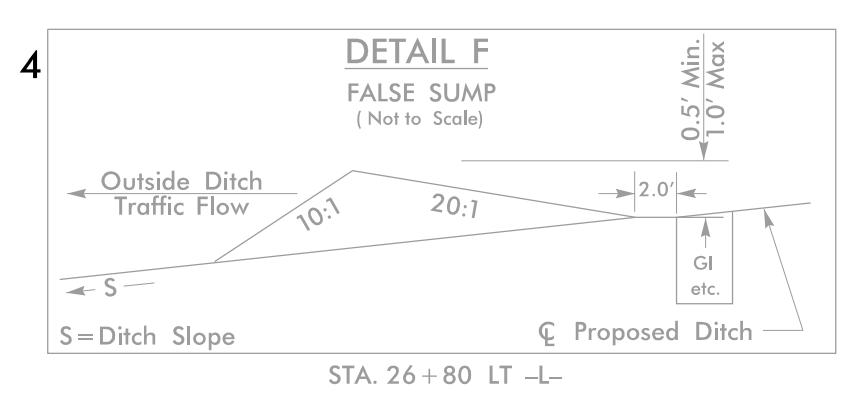
PENTABLE: NCDOT_EC_C&G_BW.tbl
 TIME: 5:49:46 PM
 DATE: 6/23/2019

REVISIONS

PROJECT REFERENCE NO.	SHEET NO.
R-5812	EC-05/CONST.05
RW SHEET NO.	
ROADWAY DESIGN ENGINEER	HYDRAULICS ENGINEER

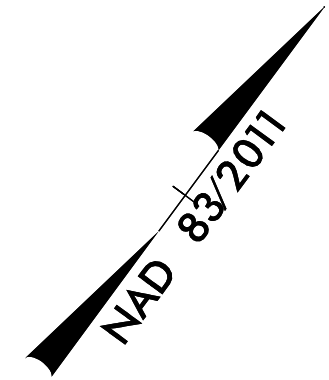
HDR HDR Engineering, Inc. of the Carolinas
 555 Fayetteville St. Suite 900 Raleigh, N.C. 27601
 N.C.B.E.L.S. License Number: F-0116

CLEARING AND GRUBBING
 EROSION CONTROL FOR
 CONSTRUCTION SHEET 05



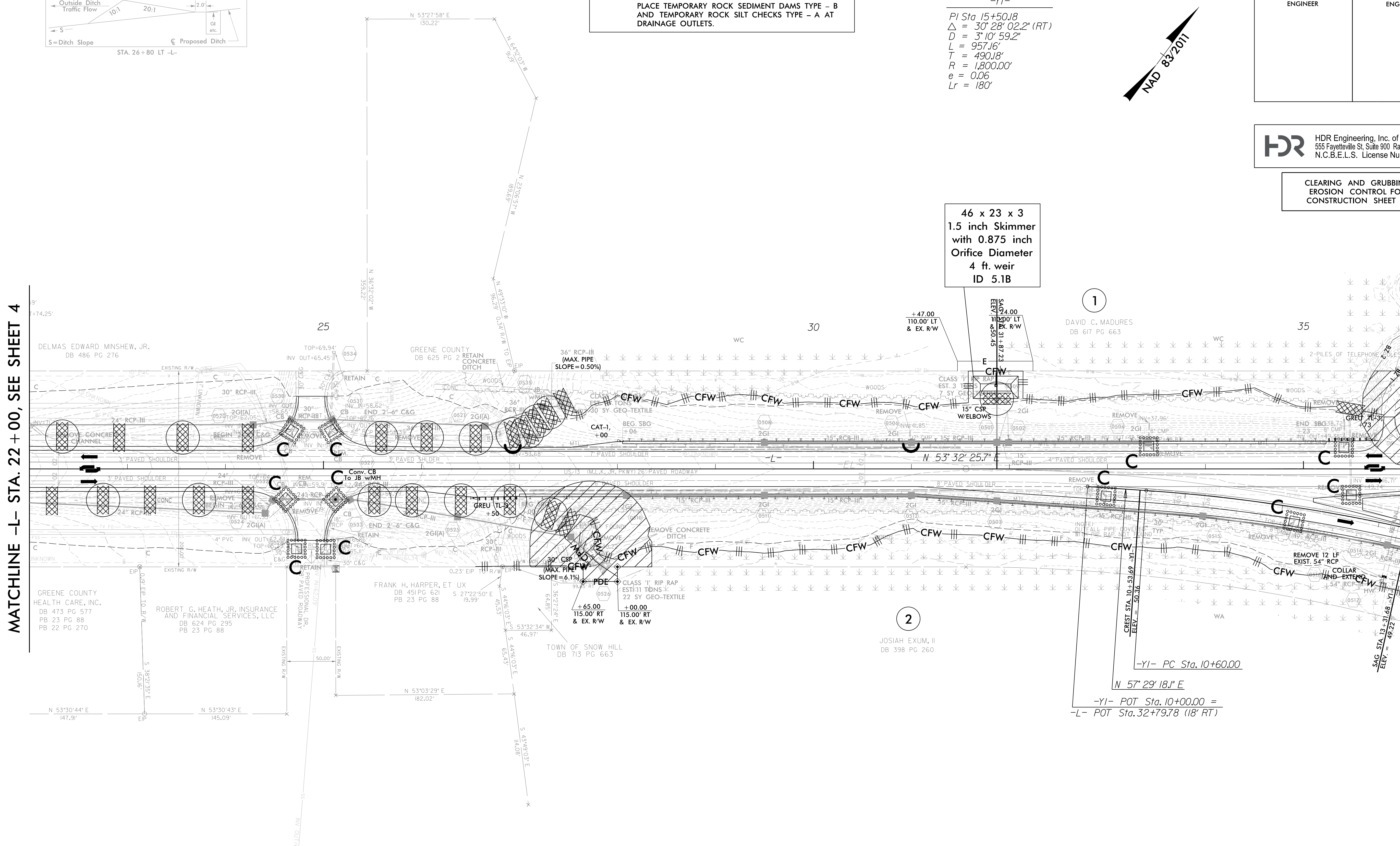
NOTE: PLACE TEMPORARY ROCK SEDIMENT DAMS TYPE - B AND TEMPORARY ROCK SILT CHECKS TYPE - A AT DRAINAGE OUTLETS.

-YI-
 PI Sta. 15+50.18
 $\Delta = 30' 28' 02.2''$ (RT)
 $D = 3' 10' 59.2''$
 $L = 957.16'$
 $T = 490.18'$
 $R = 1,800.00'$
 $e = 0.06$
 $Lr = 180'$



MATCHLINE -L- STA. 22 + 00, SEE SHEET 4

MATCHLINE -L- STA. 36 + 00, SEE SHEET 6



46 x 23 x 3
 1.5 inch Skimmer
 with 0.875 inch
 Orifice Diameter
 4 ft. weir
 ID 5.1B



DRIVEWAY RADII 50' UNLESS OTHERWISE NOTED
 SEE SHEET NO 9 FOR -L- PROFILE
 SEE SHEET NO 12 FOR -YI- PROFILE

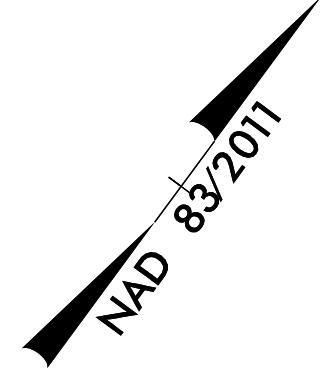
DRIVEWAY RADII 50' UNLESS OTHERWISE NOTED
 SEE SHEET NO 9 FOR -L- PROFILE

REVISIONS
 PLO: DRIVERS; NCDOT_color_eng_100.pht
 USER: MMCNAMARA
 DATE: 6/3/2019
 TIME: 5:49:49 PM
 FILE: NCDOT\2015_NCDOT_East_Reg.Div_Planming_Design_LSA\NCDOT-R-5812-US_13_Widening\6.0_CAD_BIM\6.2_Work\In_Progress\R-5812_Hydraulics\EROSTON_CONTROL_NR5812_HYD_EC_PSH.dgn

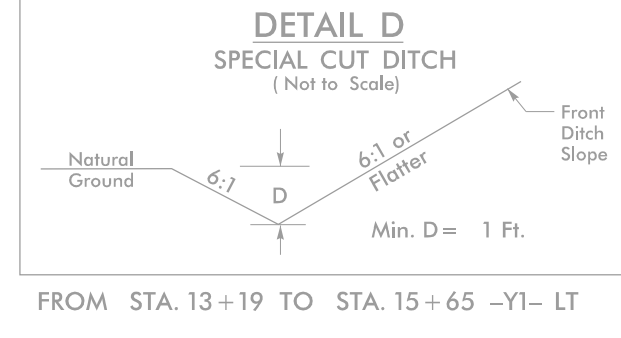
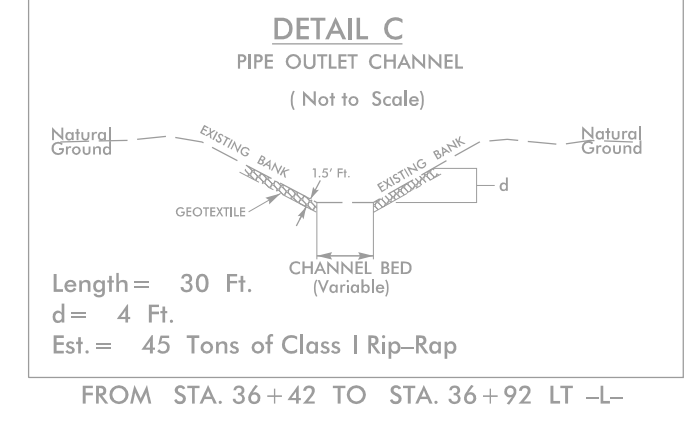
PROJECT REFERENCE NO.	SHEET NO.
R-5812	EC-06/CONST.06
RW SHEET NO.	
ROADWAY DESIGN ENGINEER	HYDRAULICS ENGINEER

HDR HDR Engineering, Inc. of the Carolinas
 555 Fayetteville St. Suite 900 Raleigh, N.C. 27601
 N.C.B.E.L.S. License Number: F-0116

CLEARING AND GRUBBING
 EROSION CONTROL FOR
 CONSTRUCTION SHEET 06



NOTE:
 PLACE TEMPORARY ROCK SEDIMENT DAMS TYPE - B
 AND TEMPORARY ROCK SILT CHECKS TYPE - A AT
 DRAINAGE OUTLETS.

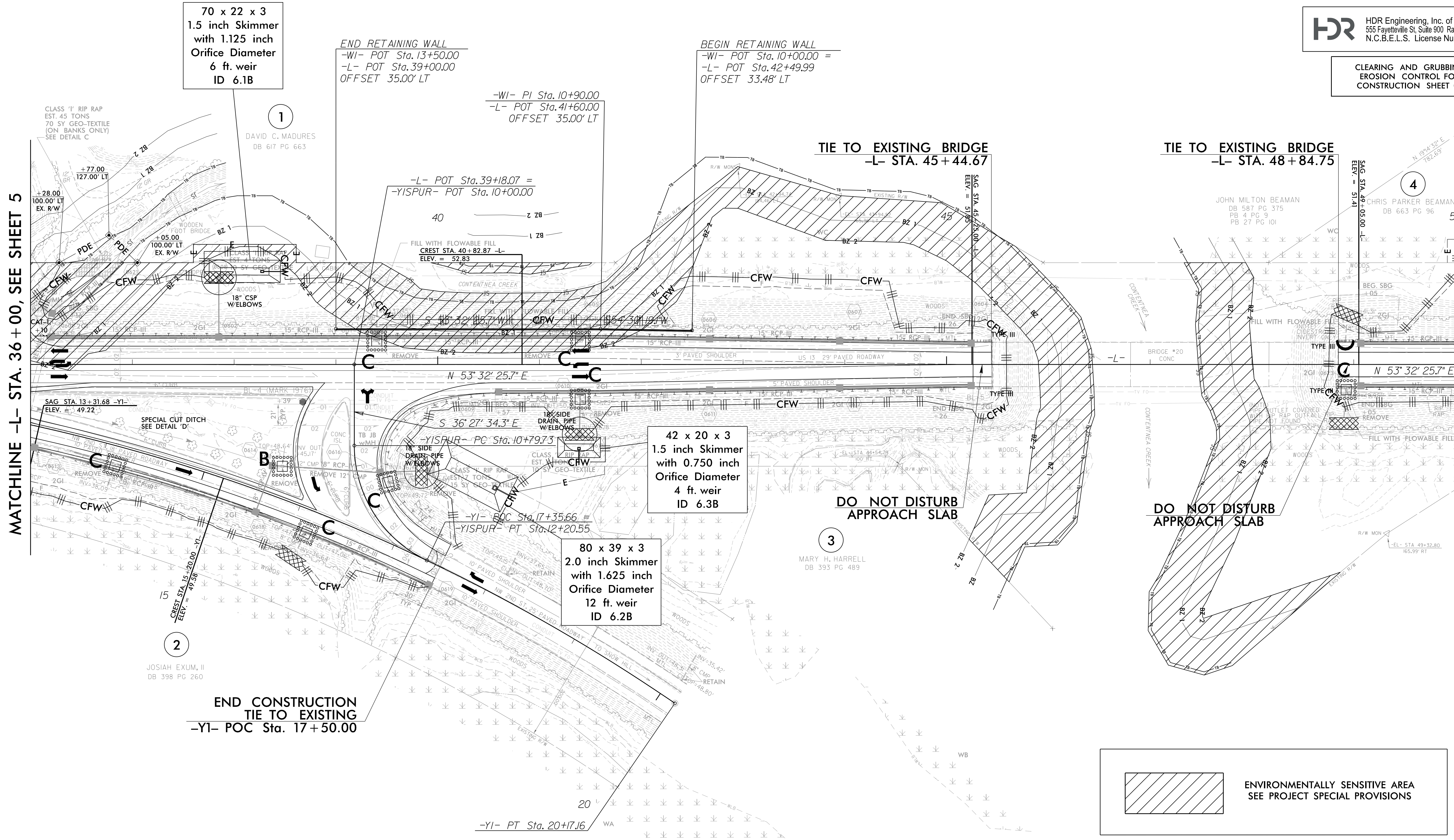


-YI-
 PI Sta 15+50.18
 $\Delta = 30^{\circ} 28' 02.2''$ (RT)
 $D = 3^{\circ} 10' 59.2''$
 $L = 957.16'$
 $T = 490.18'$
 $R = 1,800.00'$
 $e = 0.06$
 $Lr = 180'$

-YISPUR-
 PI Sta 11+58.67
 $\Delta = 64^{\circ} 32' 42.7''$ (LT)
 $D = 45^{\circ} 50' 11.8''$
 $L = 140.82'$
 $T = 78.94'$
 $R = 125.00'$
 $e = 0.02$
 $Lr = 48'$

MATCHLINE -L- STA. 36 + 00, SEE SHEET 5

MATCHLINE -L- STA. 50 + 00, SEE SHEET 7

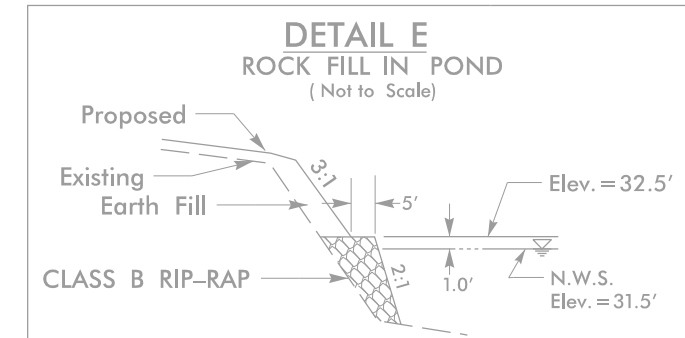
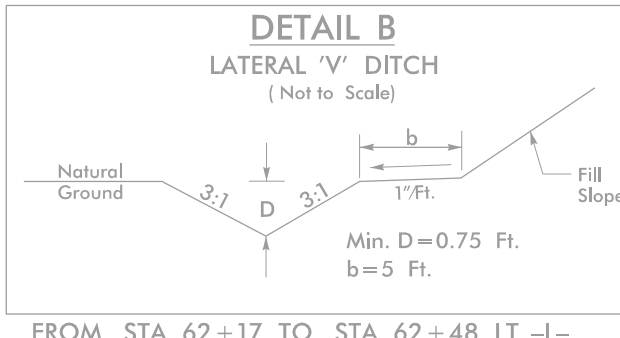
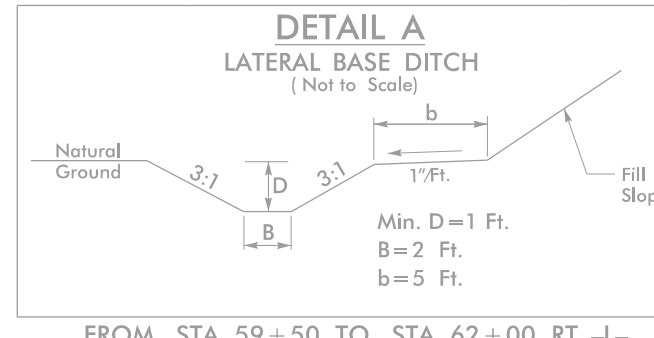


ENVIRONMENTALLY SENSITIVE AREA
 SEE PROJECT SPECIAL PROVISIONS

SEE SHEET NO 10 FOR -L- PROFILE
 SEE SHEET NO 12 FOR -YI- PROFILE
 SEE SHEET NO 12 FOR -YISPUR- PROFILE
 SEE SHEET NO 2B-1 FOR INTERSECTION DETAIL
 SEE SHEET NO S-1 THRU S-9 FOR RETAINING WALL PLANS

REVISIONS
 PLOT DRIVER: NCDOT_pdf_color_eng_100.plt
 USER: MNCNAMARA
 FILE: NCDOT\2015\NCDOT_East_Reg_Div_Planning_Design\LSA\NCDOT-R-5812-US-13_Widening\6.0_CAD_BIM\6.2_Work\In_Progress\R-5812_Hydr\ouices\EROSTON_CONTROL\NR5812_HYD_EC_PSH.dgn
 PENTABLE: NCDOT_EC_C&G_BW.tbl
 TIME: 5:49:51 PM
 DATE: 6/3/2019

REVISIONS



-L-

Pls Sta 51+48.25	Pl Sta 56+72.47	Pls Sta 61+94.74
$\theta_s = 1'00''18.7''$	$\Delta = 9'10''44.5''(LT)$	$\theta_s = 1'00''18.7''$
$L_s = 200.00'$	$D = 1'00''18.7''$	$L_s = 200.00'$
$LT = 133.34'$	$L = 913.17'$	$LT = 133.34'$
$ST = 66.67'$	$T = 457.56'$	$ST = 66.67'$
	$R = 5,700.00'$	
	$e = 0.03$	
	$L_r = 105'$	

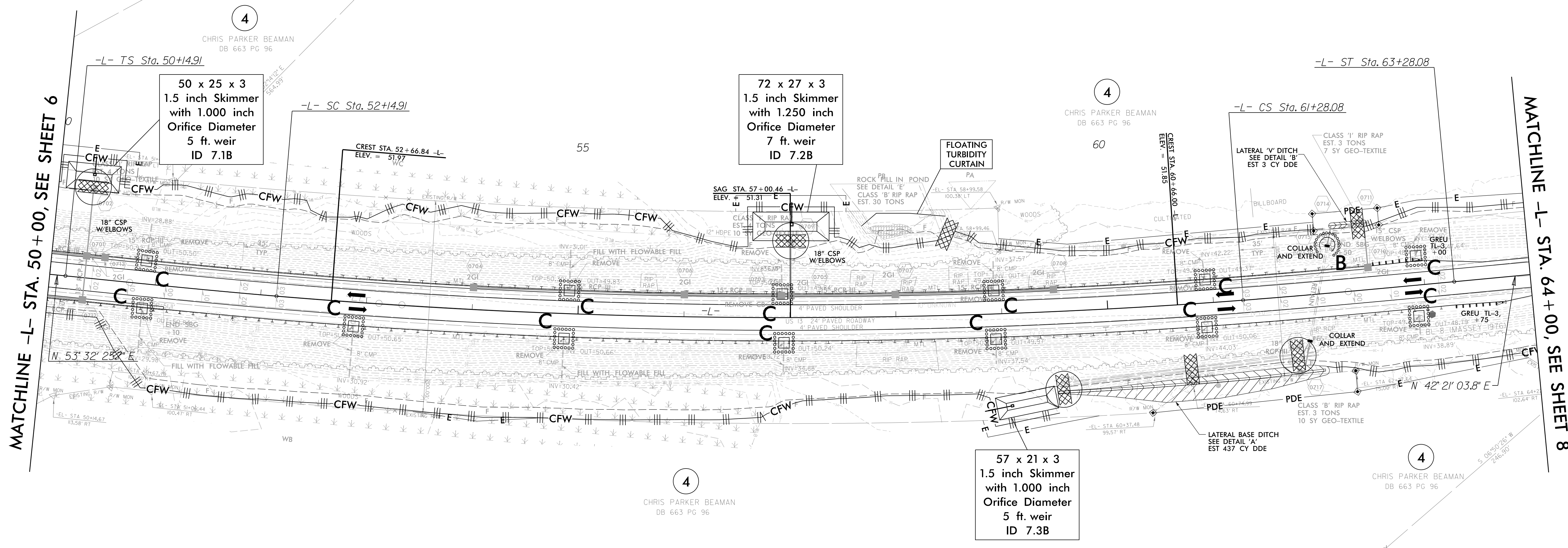
NOTE: PLACE TEMPORARY ROCK SEDIMENT DAMS TYPE - B AND TEMPORARY ROCK SILT CHECKS TYPE - A AT DRAINAGE OUTLETS.



PROJECT REFERENCE NO. R-5812	SHEET NO. <i>EC-07/CONST.07</i>
ROADWAY DESIGN ENGINEER	HYDRAULICS ENGINEER

HDR HDR Engineering, Inc. of the Carolinas
 555 Fayetteville St. Suite 900 Raleigh, N.C. 27601
 N.C.B.E.L.S. License Number: F-0116

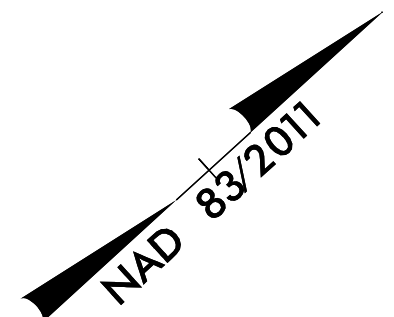
CLEARING AND GRUBBING
 EROSION CONTROL FOR
 CONSTRUCTION SHEET 07



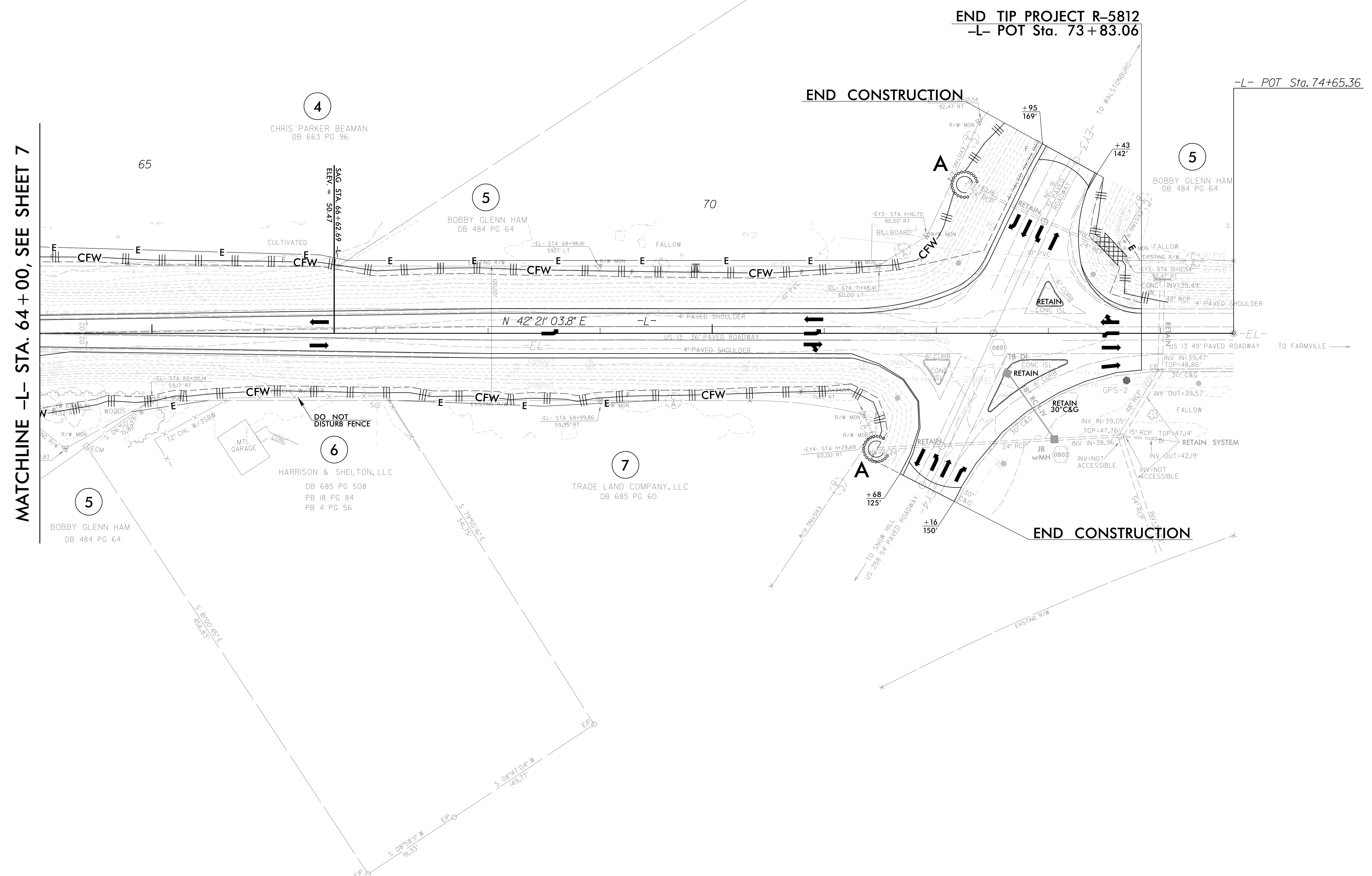
PROJECT REFERENCE NO.	SHEET NO.
R-5812	EC-08/CONST.08
RW SHEET NO.	
ROADWAY DESIGN ENGINEER	HYDRAULICS ENGINEER

HDR HDR Engineering, Inc. of the Carolinas
 555 Fayetteville St. Suite 900 Raleigh, N.C. 27601
 N.C.B.E.L.S. License Number: F-0116

CLEARING AND GRUBBING
 EROSION CONTROL FOR
 CONSTRUCTION SHEET 08



NOTE:
 PLACE TEMPORARY ROCK SEDIMENT DAMS TYPE - B
 AND TEMPORARY ROCK SILT CHECKS TYPE - A AT
 DRAINAGE OUTLETS.



MATCHLINE -L- STA. 64+00, SEE SHEET 7

END TIP PROJECT R-5812
 -L- POT Sta. 73+83.06

-L- POT Sta. 74+65.36

END CONSTRUCTION

END CONSTRUCTION

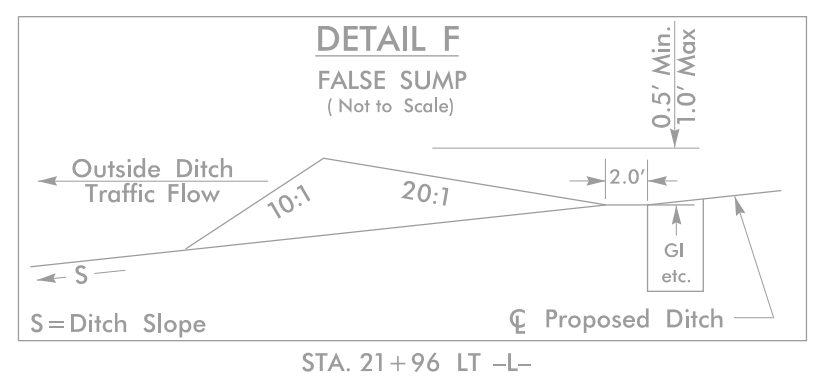
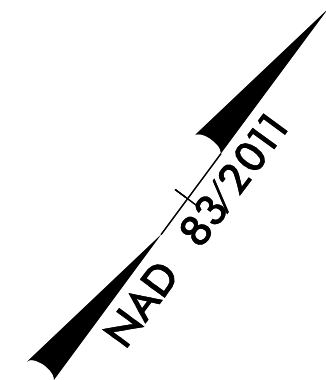
PLOT DRIVER: NCDOT_pdf_color_eng_100.plt
 USER: MMCNAMARA
 FILE: NCDOT\2015.NCDOT_Ecost_East_Reg.Div_Planning_Design_LSA\NCDOT-R-5812_US_13_Widening\6.0.CAD.BIM\6.2.Work\In_Progress\R-5812_Hydraulics\EROSTON_CONTROL_NR5812_HYD_EC_PSH.dgn
 PENTABLE: NCDOT_EC_C&G_BW.tbl
 TIME: 5:49:57 PM
 DATE: 6/23/2019
 REVISIONS

SEE SHEET NO 11 FOR -L- PROFILE
 CONTRACTOR TO PRECLUDE PONDING
 OF WATER AROUND CONCRETE ISLANDS

PROJECT REFERENCE NO.	SHEET NO.
R-5812	EC-09/CONST.04
RW SHEET NO.	
ROADWAY DESIGN ENGINEER	HYDRAULICS ENGINEER

HDR HDR Engineering, Inc. of the Carolinas
 555 Fayetteville St. Suite 900 Raleigh, N.C. 27601
 N.C.B.E.L.S. License Number: F-0116

FINAL EROSION CONTROL FOR CONSTRUCTION SHEET 04



INSTALL MATTING FOR EROSION CONTROL IN ALL ROADWAY DITCH LINES FOR QUICK STABILIZATION.

GREENE COUNTY BOARD OF EDUCATION
 DB 367 PG 161
 DB 367 PG 79
 PB 5 PG 36

8
 YAMCO, LLC
 DB 609 PG 766
 PB 10 PG 43

BEGIN TIP PROJECT R-5812
 -L- POT Sta. 10 +36.85

-L- POT Sta. 9+00.00
 BEGIN CONSTRUCTION
 -L- POT Sta. 9+28.50

GREENE COUNTY GOVERNMENT
 DB 398 PG 291
 PB 16 PG 28

GREENE COUNTY HEALTH CARE, INC.
 DB 473 PG 577
 PB 23 PG 88
 PB 22 PG 270

MATCHLINE -L- STA. 22 + 00, SEE SHEET 5

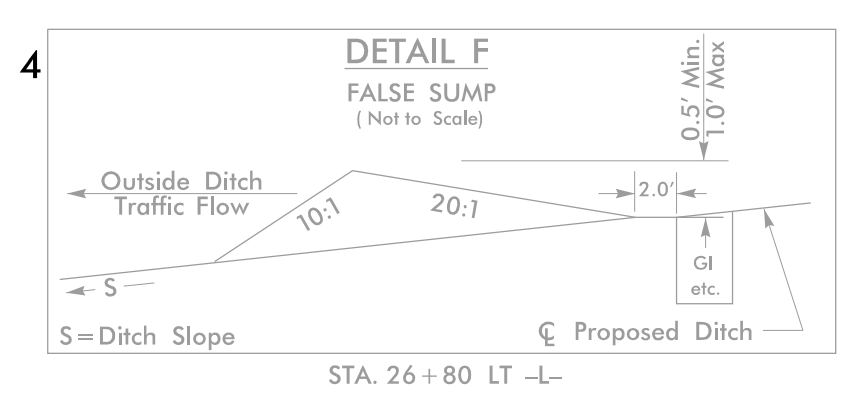
PLOT DRIVER: NCDOT_pdf_color_eng_100.plt
 USER: MMCNAMARA
 FILE: NCDOT\2015\NCDOT_East_Reg_Div_Planning_Design\LSA\NCDOT-R-5812_US_13_Widening\6.0_CAD_BIM\6.2_Work\In_Progress\R-5812_Hydraulics\EROSTON_CONTROL_NR5812_HYD_EC_PSH.dgn
 PENTABLE: NCDOT_EC_FINAL_BW.tbl
 TIME: 5:46:24 PM
 DATE: 6/3/2019
 REVISIONS

DRIVEWAY RADII 50' UNLESS OTHERWISE NOTED
 SEE SHEET NO 9 FOR -L- PROFILE

PROJECT REFERENCE NO.	SHEET NO.
R-5812	EC-10/CONST.05
RW SHEET NO.	
ROADWAY DESIGN ENGINEER	HYDRAULICS ENGINEER

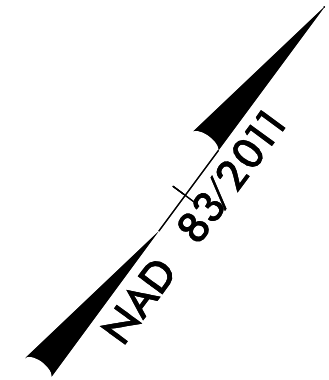
HDR HDR Engineering, Inc. of the Carolinas
 555 Fayetteville St. Suite 900 Raleigh, N.C. 27601
 N.C.B.E.L.S. License Number: F-0116

FINAL EROSION CONTROL FOR
 CONSTRUCTION SHEET 05



Place Matting for Erosion Control
 on Slope as Work Allows.
 Sta. 22+50 to Sta. 24+65 -L- LT (Backslope)
 Sta. 25+25 to Sta. 26+25 -L- LT (Backslope)
 Sta. 25+25 to 26+75 -L- RT (Backslope)
 Sta. 27+35 to Sta. 35+63 -L- LT
 Sta. 27+50 to Sta. 32+80 -L- RT
 Sta. 10+00 to Sta. 13+28 -YI- RT

-YI-
 PI Sta. 15+50.18
 $\Delta = 30' 28' 02.2''$ (RT)
 $D = 3' 10' 59.2''$
 $L = 957.16'$
 $T = 490.18'$
 $R = 1,800.00'$
 $e = 0.06$
 $Lr = 180'$

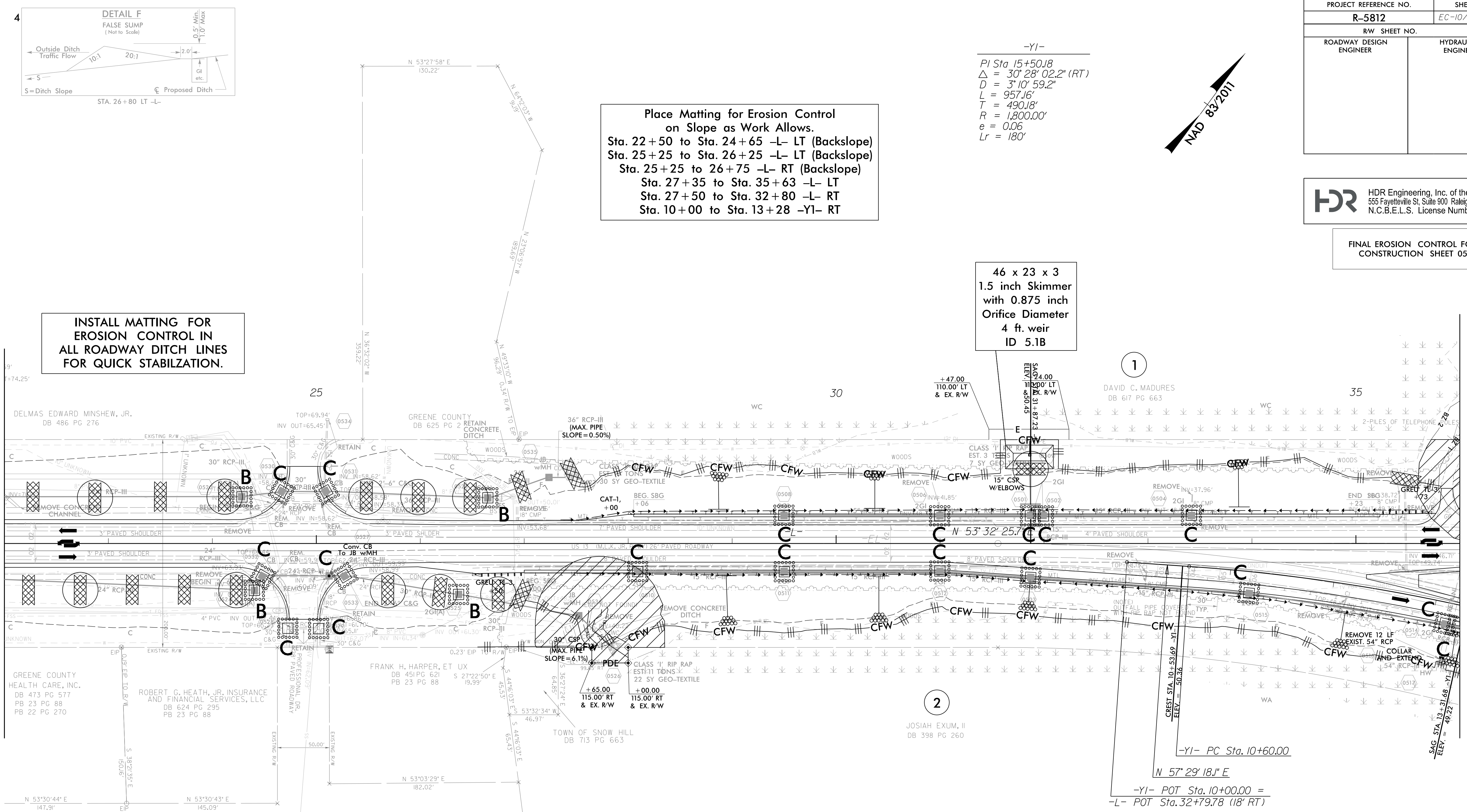


INSTALL MATTING FOR
 EROSION CONTROL IN
 ALL ROADWAY DITCH LINES
 FOR QUICK STABILIZATION.

46 x 23 x 3
 1.5 inch Skimmer
 with 0.875 inch
 Orifice Diameter
 4 ft. weir
 ID 5.1B

MATCHLINE -L- STA. 22+00, SEE SHEET 4

MATCHLINE -L- STA. 36+00, SEE SHEET 6



DRIVEWAY RADII 50' UNLESS OTHERWISE NOTED
 SEE SHEET NO 9 FOR -L- PROFILE

REVISIONS

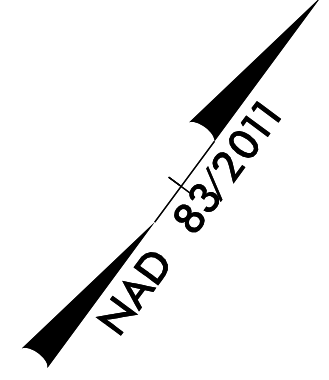
PL0:DRIVER: NCDOT_color_eng_100.pht
 USER: MMCNAMARA
 PENTABLE: NCDOT_EC_FINAL_BW.tbl
 TIME: 5:46:28 PM
 DATE: 6/3/2019
 F:\NCDOT\2015_NCDOT_East_Reg.Div_Planming_Design_LSA\NCDOT-R-5812-US-13_Widening\6.0_CAD_BIM\6.2_Work\In_Progress\R-5812_Hydraulics\EROSTON_CONTROL\RS5812_HYD_EC_PSH.dgn

DRIVEWAY RADII 50' UNLESS OTHERWISE NOTED
 SEE SHEET NO 9 FOR -L- PROFILE
 SEE SHEET NO 12 FOR -YI- PROFILE

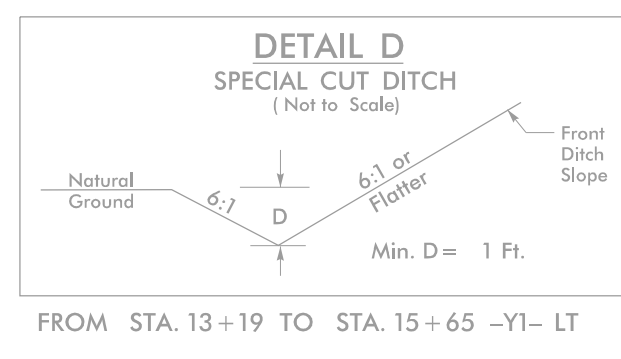
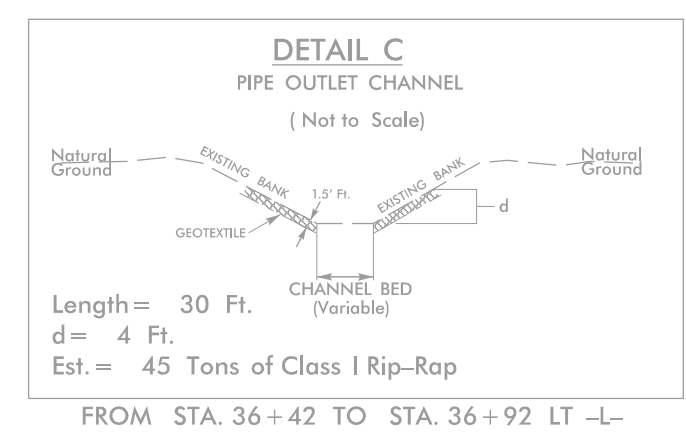
PROJECT REFERENCE NO.	SHEET NO.
R-5812	EC-II/CONST.06
RW SHEET NO.	
ROADWAY DESIGN ENGINEER	HYDRAULICS ENGINEER

HDR HDR Engineering, Inc. of the Carolinas
555 Fayetteville St. Suite 900 Raleigh, N.C. 27601
N.C.B.E.L.S. License Number: F-0116

FINAL EROSION CONTROL FOR CONSTRUCTION SHEET 06

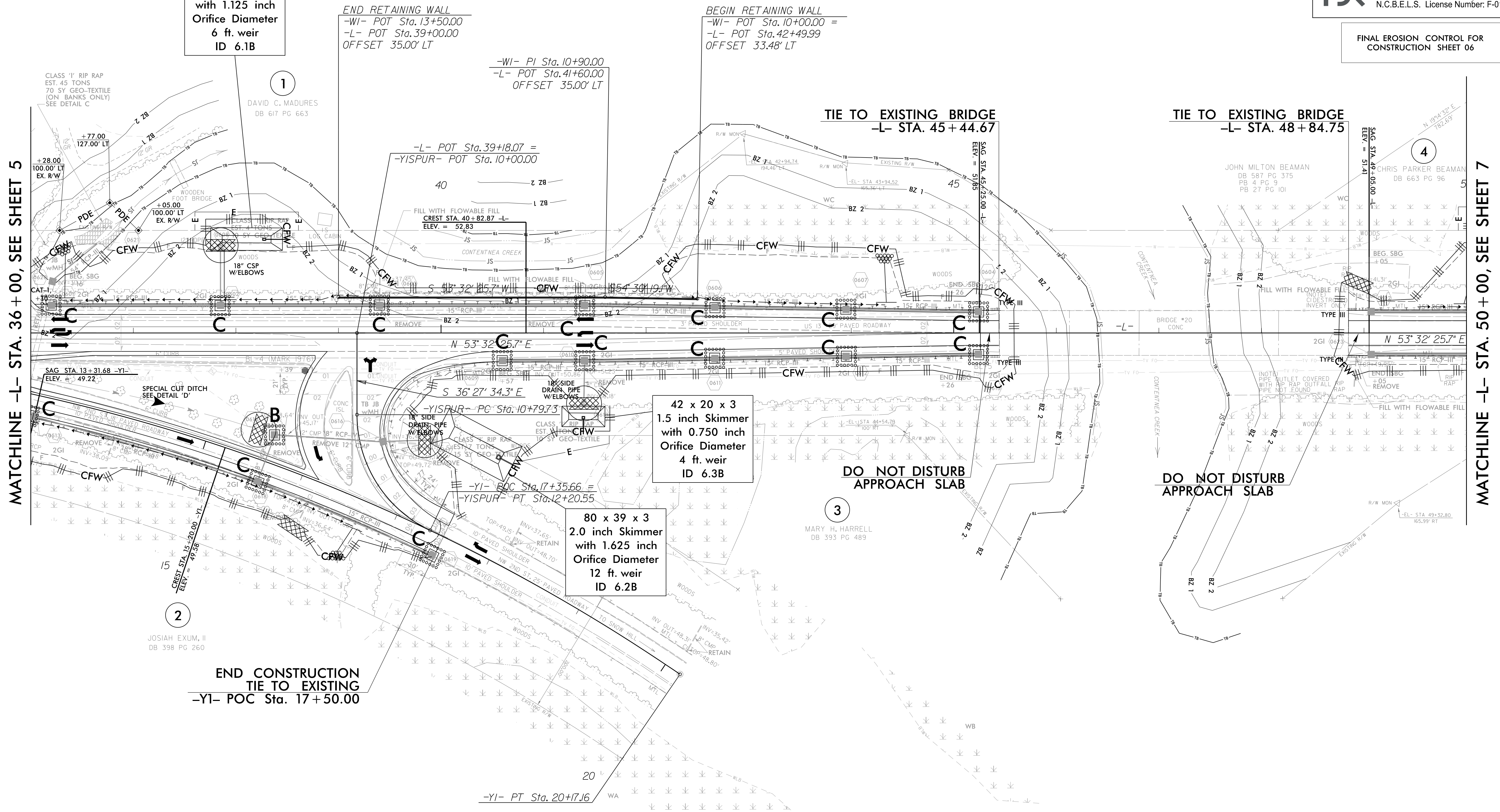


Place Matting for Erosion Control on Slope as Work Allows.
Sta. 36+16 to Sta. 39+40 -L- LT
Sta. 42+25 to Sta. 44+50 -L- LT
Sta. 13+28 to Sta. 16+70 -YI- RT



-YI-
PI Sta 15+50.18
 $\Delta = 30' 28'' 02.2''$ (RT)
D = 3' 10' 59.2"
L = 957.16'
T = 490.18'
R = 1,800.00'
e = 0.06
Lr = 180'

-YISPUR-
PI Sta 11+58.67
 $\Delta = 64' 32'' 42.7''$ (LT)
D = 45' 50' 11.8"
L = 140.82'
T = 78.94'
R = 125.00'
e = 0.02
Lr = 48'



MATCHLINE -L- STA. 36 + 00, SEE SHEET 5

MATCHLINE -L- STA. 50 + 00, SEE SHEET 7

END CONSTRUCTION TIE TO EXISTING
-YI- POC Sta. 17 + 50.00

DO NOT DISTURB APPROACH SLAB

DO NOT DISTURB APPROACH SLAB

REVISIONS
PLOT DRIVER: NCDOT_color_eng_100.pht
USER: MMCNAMARA
FILE: NCDOT\2015.NCDOT_East_Reg.Div.Planning.Design_LSA\NCDOT-R-5812-US-13.Widening\6.0.CAD.BIM\6.2.Work\In_Progress\R-5812_Hydr\oules\EROSTON_CONTROL\RS5812_HYD_EC_PSH.dgn
PENTABLE: NCDOT_EC_FINAL_BW.tbl
TIME: 5:46:31 PM
DATE: 6/3/2019

SEE SHEET NO 10 FOR -L- PROFILE
SEE SHEET NO 12 FOR -YI- PROFILE
SEE SHEET NO 12 FOR -YISPUR- PROFILE
SEE SHEET NO 2B-1 FOR INTERSECTION DETAIL
SEE SHEET NO S-1 THRU S-9 FOR RETAINING WALL PLANS

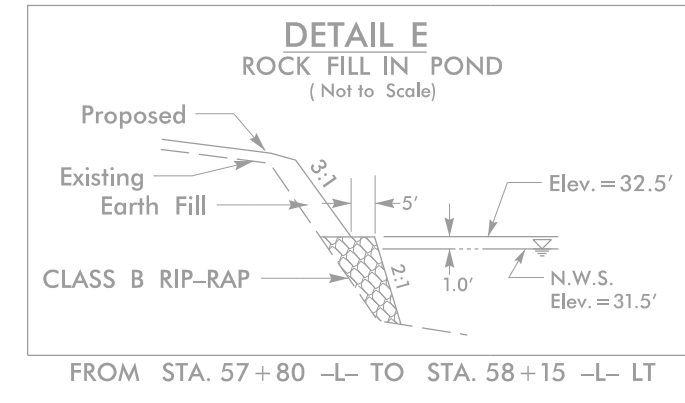
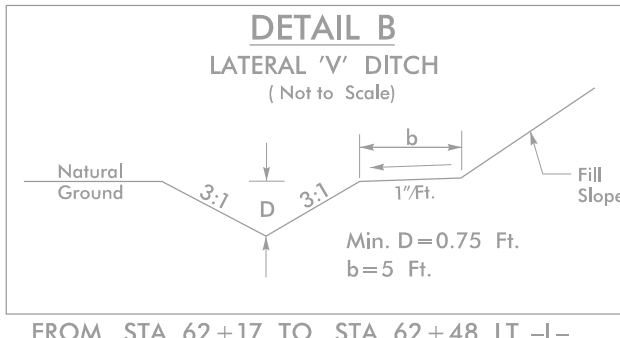
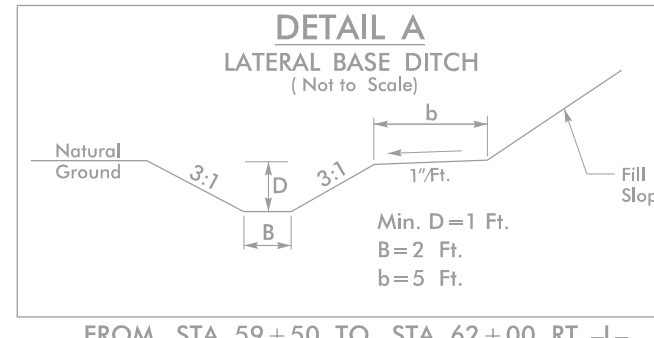
PROJECT REFERENCE NO.	SHEET NO.
R-5812	EC-12/CONST.07
RW SHEET NO.	
ROADWAY DESIGN ENGINEER	HYDRAULICS ENGINEER

HDR HDR Engineering, Inc. of the Carolinas
 555 Fayetteville St. Suite 900 Raleigh, N.C. 27601
 N.C.B.E.L.S. License Number: F-0116

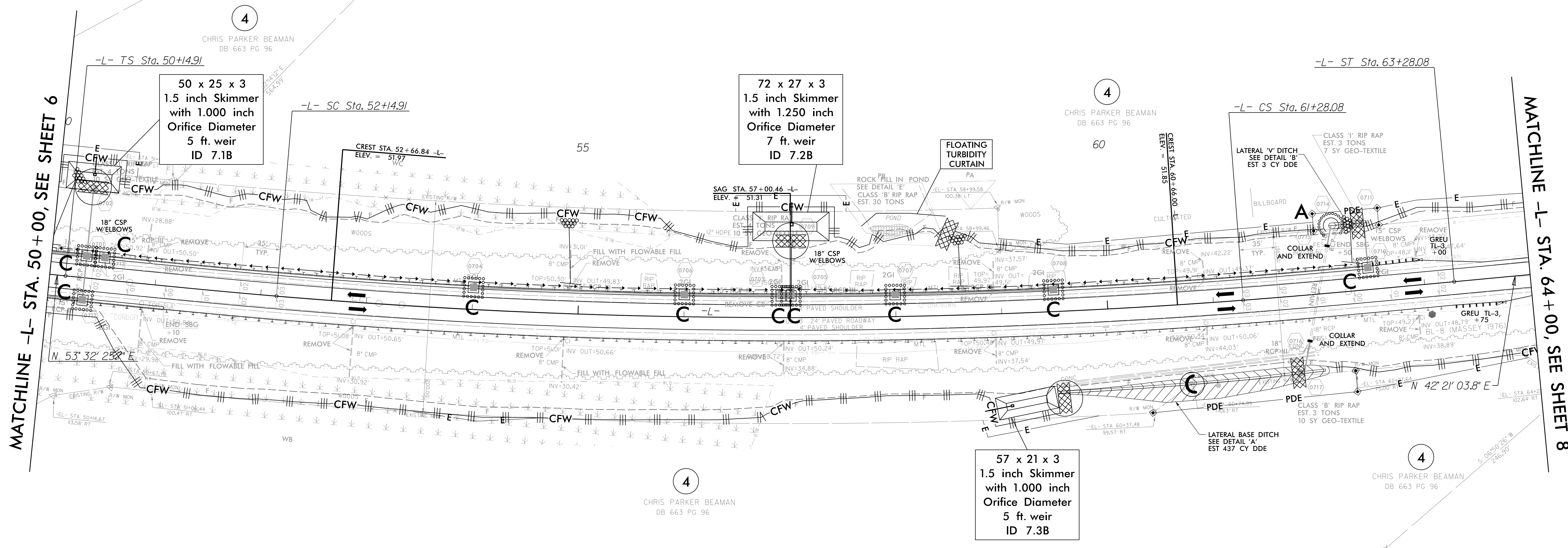
FINAL EROSION CONTROL FOR
 CONSTRUCTION SHEET 07

-L-

Pls Sta 51+48.25	PI Sta 56+72.47	Pls Sta 61+94.74
$\theta_s = 1'00'' 18.7''$	$\Delta = 9'10'' 44.5'' (LT)$	$\theta_s = 1'00'' 18.7''$
$L_s = 200.00'$	$D = 1'00'' 18.7''$	$L_s = 200.00'$
$LT = 133.34'$	$L = 913.17'$	$LT = 133.34'$
$ST = 66.67'$	$T = 457.56'$	$ST = 66.67'$
	$R = 5,700.00'$	
	$e = 0.03$	
	$L_r = 105'$	



Place Matting for Erosion Control
 on Slope as Work Allows.
 Sta. 49+50 to Sta. 63+00 -L- LT
 Sta. 50+50 to Sta. 63+00 -L- RT

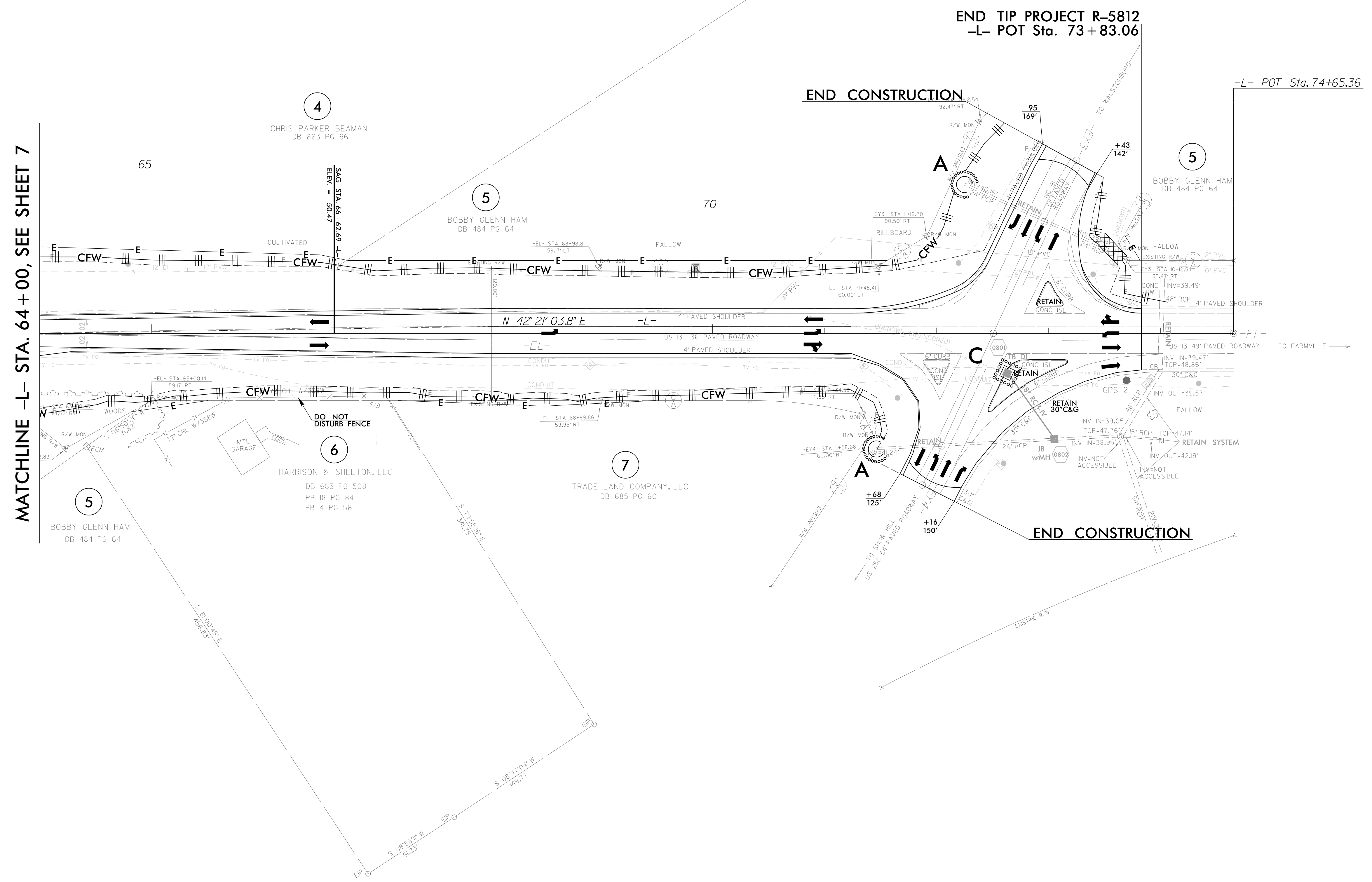
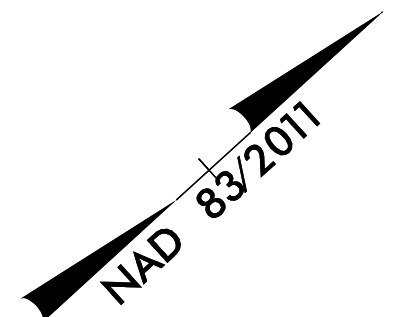


PLOT DRIVER: NCDOT_pdf_color_eng_100.pht
 USER: MMCNAMARA
 FILE: NCDOT\2015.NCDOT_East_Reg.Div_Planming_Design_LSA\NCDOT-R-5812_US_13_Widening\6.0_CAD_BIM\6.2_Work_In_Progress\R-5812_Hydraulics\EROSTON_CONTROL\RS5812_HYD_EC_PSH.dgn
 PENTABLE: NCDOT_EC_FINAL_BW.tbl
 TIME: 5:46:35 PM
 DATE: 6/3/2019
 REVISIONS

PROJECT REFERENCE NO.	SHEET NO.
R-5812	EC-13/CONST.08
RW SHEET NO.	
ROADWAY DESIGN ENGINEER	HYDRAULICS ENGINEER

HDR HDR Engineering, Inc. of the Carolinas
 555 Fayetteville St. Suite 900 Raleigh, N.C. 27601
 N.C.B.E.L.S. License Number: F-0116

FINAL EROSION CONTROL FOR
 CONSTRUCTION SHEET 08



MATCHLINE -L- STA. 64+00, SEE SHEET 7

END TIP PROJECT R-5812
 -L- POT Sta. 73+83.06

END CONSTRUCTION

END CONSTRUCTION

-L- POT Sta. 74+65.36

PLOT DRIVER: NCDOT_pdf_color_eng_100.plt
 USER: MMCNAMARA
 FILE: NCDOT\2015.NCDOT_Ecost_Reg_Div_Planning_Design_LSA\NCDOT-R-5812_US_13_Widening\6.0_CAD_BITMAP\6.2_Work\In_Progress\R-5812_Hydraulics\EROSTON_CONTROL_NR5812_HYD_EC_PSH.dgn
 PENTABLE: NCDOT_EC_FINAL_BW.tbl
 TIME: 5:46:38 PM
 DATE: 6/23/2019
 REVISIONS

SEE SHEET NO 11 FOR -L- PROFILE
 CONTRACTOR TO PRECLUDE PONDING
 OF WATER AROUND CONCRETE ISLANDS