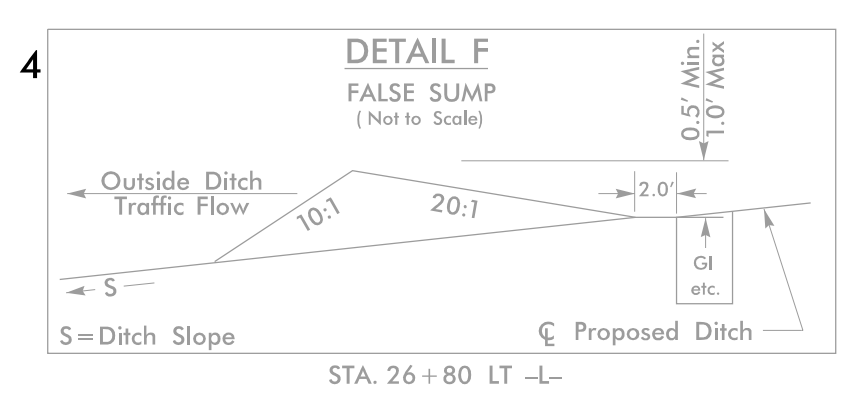


PROJECT REFERENCE NO.	SHEET NO.
R-5812	EC-10/CONST.05
RW SHEET NO.	
ROADWAY DESIGN ENGINEER	HYDRAULICS ENGINEER

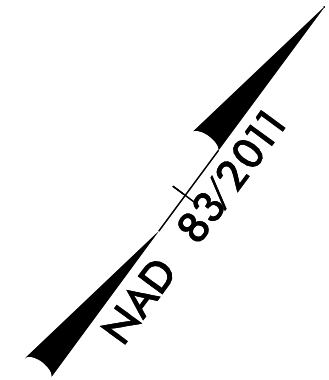
**HDR** HDR Engineering, Inc. of the Carolinas  
 555 Fayetteville St. Suite 900 Raleigh, N.C. 27601  
 N.C.B.E.L.S. License Number: F-0116

FINAL EROSION CONTROL FOR  
 CONSTRUCTION SHEET 05



Place Matting for Erosion Control  
 on Slope as Work Allows.  
 Sta. 22+50 to Sta. 24+65 -L- LT (Backslope)  
 Sta. 25+25 to Sta. 26+25 -L- LT (Backslope)  
 Sta. 25+25 to 26+75 -L- RT (Backslope)  
 Sta. 27+35 to Sta. 35+63 -L- LT  
 Sta. 27+50 to Sta. 32+80 -L- RT  
 Sta. 10+00 to Sta. 13+28 -YI- RT

-YI-  
 PI Sta. 15+50.18  
 $\Delta = 30' 28' 02.2''$  (RT)  
 $D = 3' 10' 59.2''$   
 $L = 957.16'$   
 $T = 490.18'$   
 $R = 1,800.00'$   
 $e = 0.06$   
 $Lr = 180'$

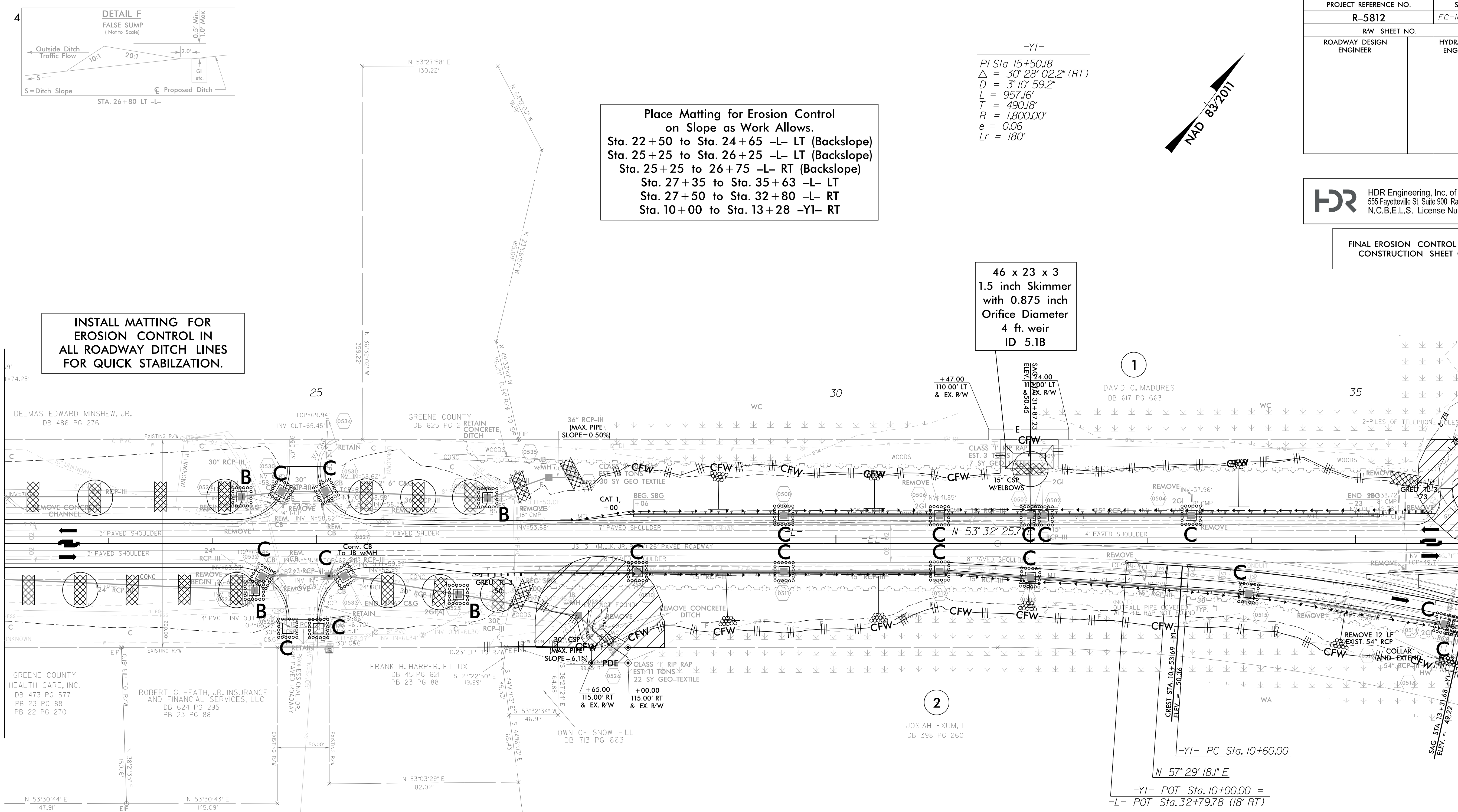


INSTALL MATTING FOR  
 EROSION CONTROL IN  
 ALL ROADWAY DITCH LINES  
 FOR QUICK STABILIZATION.

46 x 23 x 3  
 1.5 inch Skimmer  
 with 0.875 inch  
 Orifice Diameter  
 4 ft. weir  
 ID 5.1B

MATCHLINE -L- STA. 22+00, SEE SHEET 4

MATCHLINE -L- STA. 36+00, SEE SHEET 6



DRIVEWAY RADII 50' UNLESS OTHERWISE NOTED  
 SEE SHEET NO. 9 FOR -L- PROFILE

REVISIONS

PL0:DRIVER: NCDOT\_color\_eng\_100.pht  
 USER: MMCNAMARA  
 PENTABLE: NCDOT\_EC\_FINAL\_BW.tbl  
 TIME: 5:46:28 PM  
 DATE: 6/3/2019  
 F:\NCDOT\2015\_NCDOT\_East\_Reg\_Div\_Planning\_Design\_LSA\NCDOT-R-5812-US-13\_Widening\6.0\_CAD\_BIM\6.2\_Work\In\_Progress\R-5812\_Hydraulics\EROSTON\_CONTROL\RS5812\_HYD\_EC\_PSH.dgn

DRIVEWAY RADII 50' UNLESS OTHERWISE NOTED  
 SEE SHEET NO. 9 FOR -L- PROFILE  
 SEE SHEET NO. 12 FOR -YI- PROFILE