

**This electronic collection of documents is provided
for the convenience of the user
and is Not a Certified Document –**

**The documents contained herein were originally issued
and sealed by the individuals whose names and license
numbers appear on each page, on the dates appearing
with their signature on that page.**

**This file or an individual page
shall not be considered a certified document.**

09.08/99

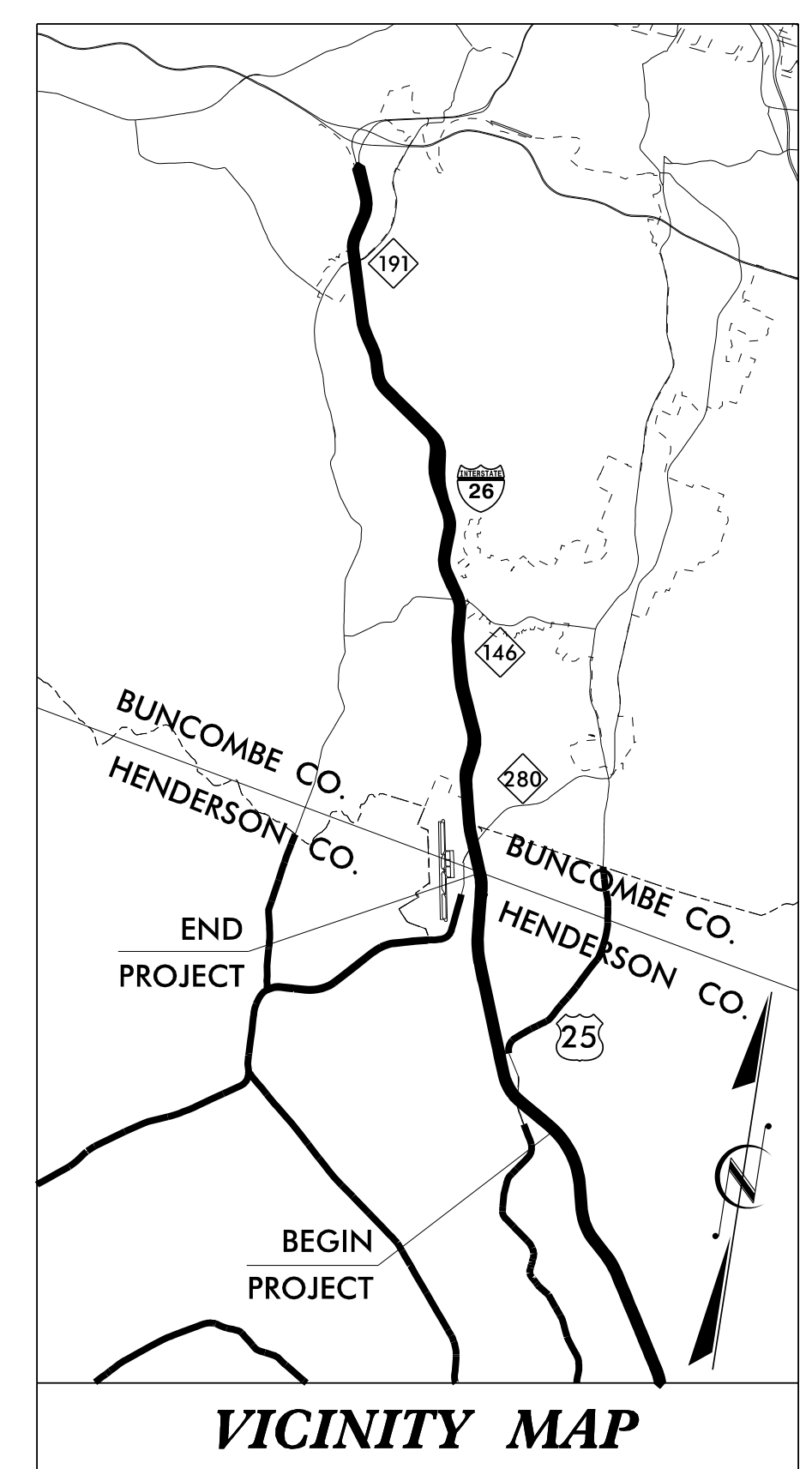
TIP PROJECT: I-4400C

STATE OF NORTH CAROLINA
DIVISION OF HIGHWAYS

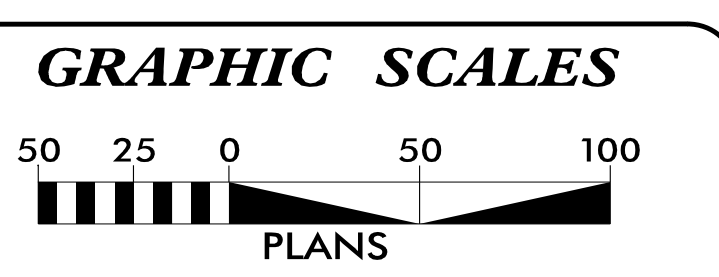
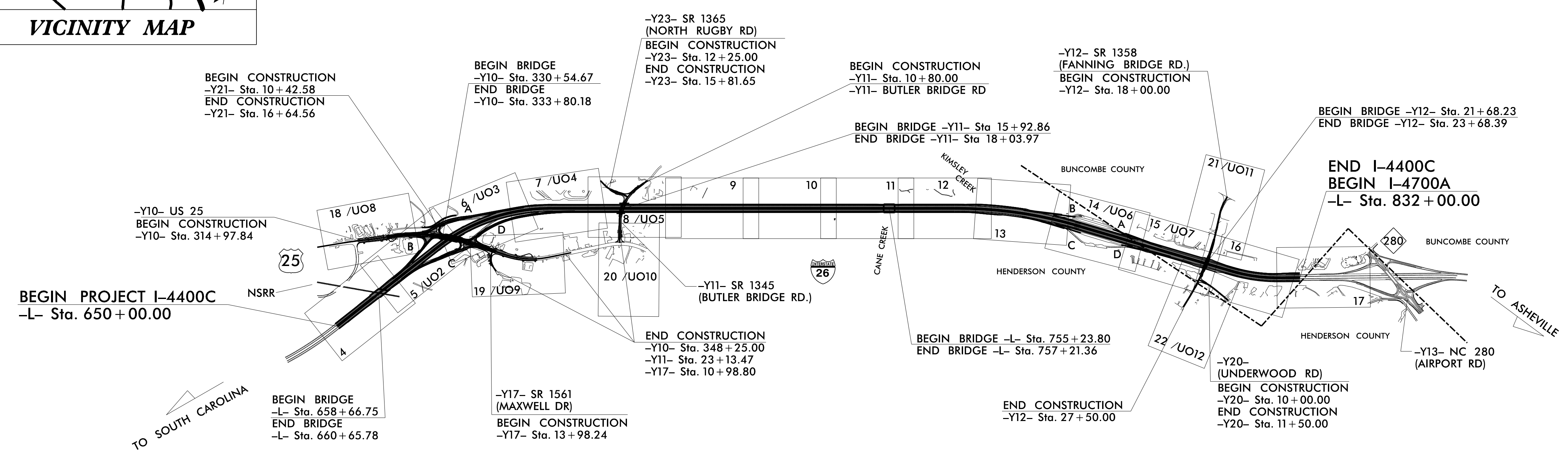
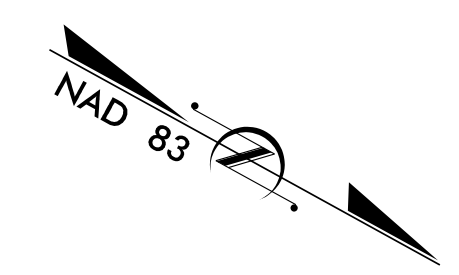
UTILITIES BY OTHERS PLANS
BUNCOMBE &
HENDERSON COUNTIES

T.I.P. NO.	SHEET NO.
I-4400C	UO-1

NOTE:
ALL UTILITY WORK SHOWN ON THIS SHEET WILL BE DONE BY OTHERS. NO PAYMENT WILL BE MADE TO THE CONTRACTOR FOR UTILITY WORK SHOWN ON THIS SHEET.



LOCATION: I-26 FROM 0.5MI SOUTH OF US 25 (ASHEVILLE HIGHWAY) TO 0.3MI SOUTH OF NC 280 (AIRPORT ROAD)
TYPE OF WORK: RELOCATION OF POWER, AND COMMUNICATION LINES



INDEX OF SHEETS

SHEET NO.:	DESCRIPTION:
UO-1	TITLE SHEET
UO-2 THRU UO-3	UBO SYMBOLOGY SHEETS
UO-4 THRU UO-22	UBO PLAN SHEETS

UTILITY OWNERS WITH CONFLICTS

(A) POWER TRANSMISSION - DUKE ENERGY
(B) POWER DISTRIBUTION - DUKE ENERGY
(C) COMMUNICATIONS - MORRIS BROADBAND
(D) COMMUNICATIONS - AT&T

PREPARED IN THE OFFICE OF:

Vaughn & Melton
Consulting Engineers
Asheville, North Carolina 828.253.2796

Reece M. Schuler, P.E. UTILITY PROJECT MANAGER
Lynn Mann, P.G. PROJECT UTILITY COORDINATOR
Shane R. Waidner UTILITY DESIGNER

HIGHWAY DIVISION 14

253 WEBSTER ROAD
SILVA, NC 28779
PHONE (828) 542-1964
FAX (828) 586-4043

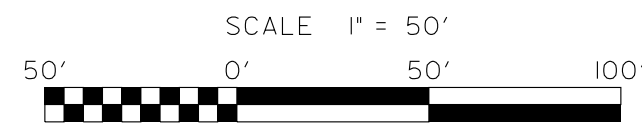
Byron Sanders, P.E. UTILITIES REGIONAL ENGINEER
Robert Golding DIVISION UTILITIES ENGINEER
Bill Green DIVISION UTILITIES COORDINATOR

V:\Asheville\transportation\011-4400C_HNTB I-26 MM40-44\Utilities\I4400C_UT_PSH01_UO1.DGN

V&M
Vaughn & Melton
 Consulting Engineers

Charlotte, North Carolina 704-377-0488
 Tri-Cities, Tennessee 423-467-8400
 Knoxville, Tennessee 865-546-6800
 Asheville, North Carolina 828-253-2796
 Middlesboro, Kentucky 606-348-6600
 Spartanburg, South Carolina 864-574-4775

Copyright © 2006 Vaughn & Melton, Inc. All Rights Reserved.

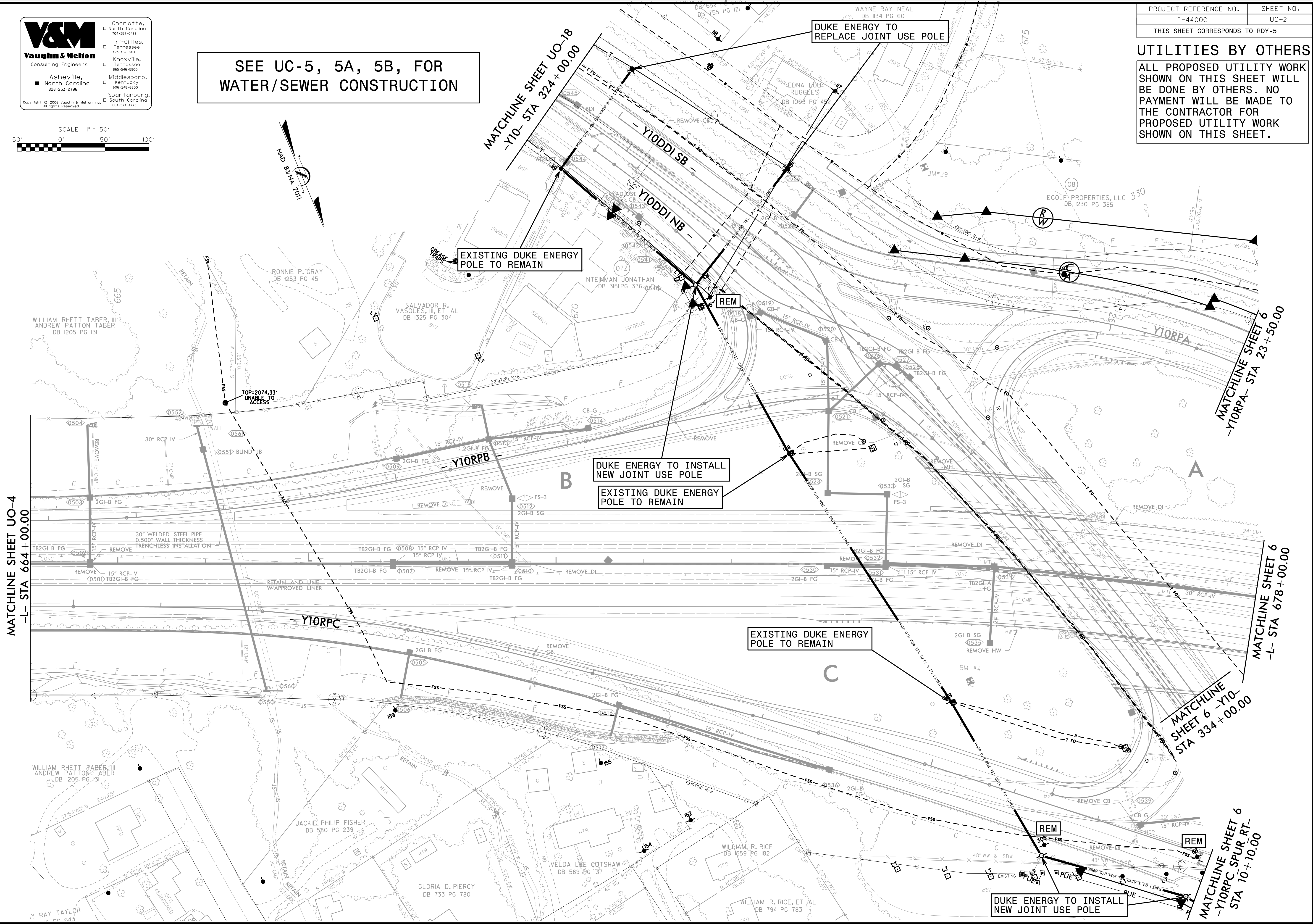


SEE UC-5, 5A, 5B, FOR
 WATER/SEWER CONSTRUCTION

PROJECT REFERENCE NO.	SHEET NO.
I-4400C	U0-2
THIS SHEET CORRESPONDS TO RDY-5	

UTILITIES BY OTHERS

ALL PROPOSED UTILITY WORK SHOWN ON THIS SHEET WILL BE DONE BY OTHERS. NO PAYMENT WILL BE MADE TO THE CONTRACTOR FOR PROPOSED UTILITY WORK SHOWN ON THIS SHEET.

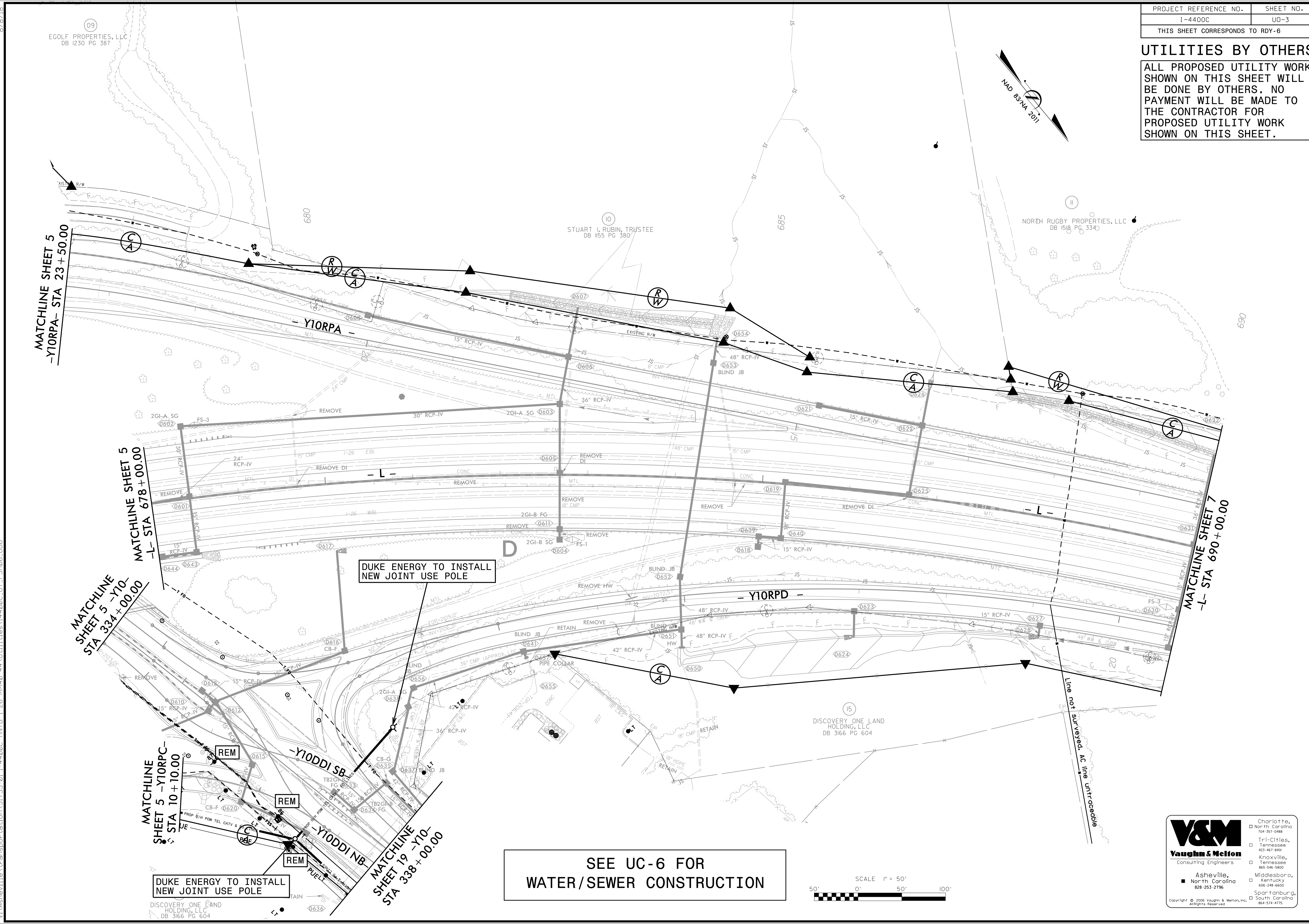
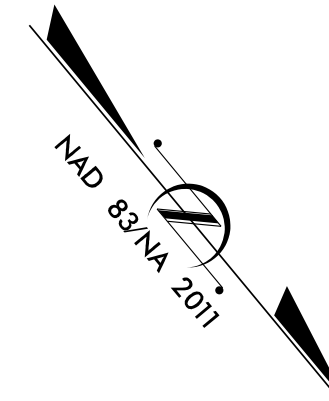


W:\Asheville\transportation\31733-01-I-4400C-HNTB-I-26-MM40-44-Utilities\14400C-UT-PS05-U05

PROJECT REFERENCE NO.	SHEET NO.
I-4400C	UO-3
THIS SHEET CORRESPONDS TO RDY-6	

UTILITIES BY OTHERS

ALL PROPOSED UTILITY WORK SHOWN ON THIS SHEET WILL BE DONE BY OTHERS. NO PAYMENT WILL BE MADE TO THE CONTRACTOR FOR PROPOSED UTILITY WORK SHOWN ON THIS SHEET.



MATCHLINE SHEET 5
-YIORPA- STA 23+50.00

MATCHLINE SHEET 5
-L- STA 678+00.00

MATCHLINE SHEET 5
-YIOPRC- STA 334+00.00

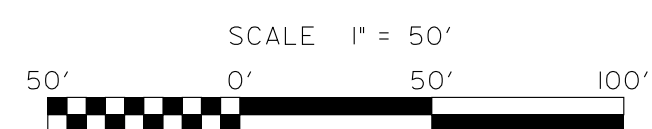
MATCHLINE SHEET 5
-YIOPRC- STA 10+10.00

DUKE ENERGY TO INSTALL
NEW JOINT USE POLE

DUKE ENERGY TO INSTALL
NEW JOINT USE POLE

SEE UC-6 FOR
WATER/SEWER CONSTRUCTION

MATCHLINE SHEET 7
-L- STA 690+00.00



V&M
Vaughn & Melton
Consulting Engineers

Charlotte, NC 704-357-0488	Tri-Cities, TN 423-461-8900
Asheville, NC 828-253-2796	Middlesboro, KY 606-248-6600
	Spartanburg, SC 864-574-4719

Copyright © 2006 Vaughn & Melton, Inc. All Rights Reserved.

8/7/18
V:\Asheville\transportation\31733-01\I-4400C_HNTB_I-26_MM40-44_Uilities\I4400C_UI_PSH06_U06

EGOLF PROPERTIES, LLC
DB 1230 PG 387

STUART I. RUBIN, TRUSTEE
DB 1155 PG 380

NORTH RUGBY PROPERTIES, LLC
DB 1518 PG 334

DISCOVERY ONE LAND
HOLDING, LLC
DB 3166 PG 604

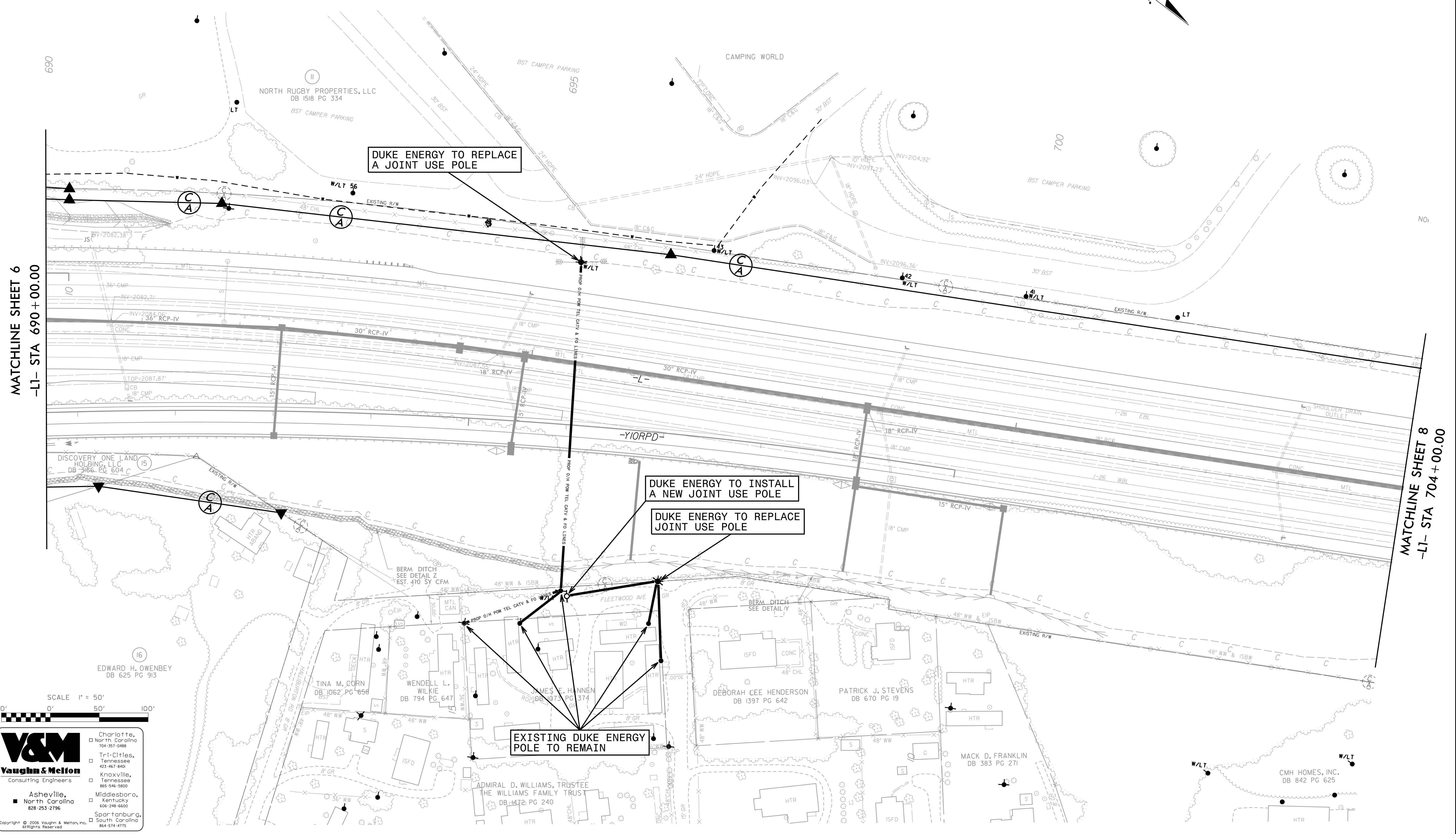
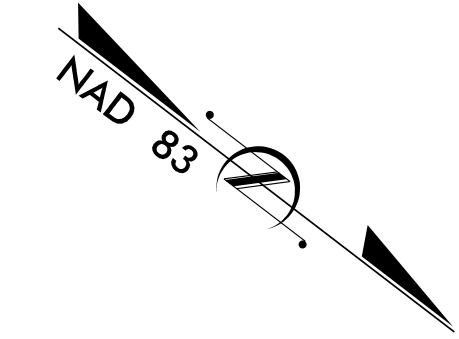
DISCOVERY ONE LAND
HOLDING, LLC
DB 3166 PG 604

Line not surveyed. AC line untraceable

UTILITIES BY OTHERS

ALL PROPOSED UTILITY WORK SHOWN ON THIS SHEET WILL BE DONE BY OTHERS. NO PAYMENT WILL BE MADE TO THE CONTRACTOR FOR PROPOSED UTILITY WORK SHOWN ON THIS SHEET.

SEE UC-7 FOR WATER/SEWER CONSTRUCTION



MATCHLINE SHEET 6
-LI- STA 690+00.00

MATCHLINE SHEET 8
-LI- STA 704+00.00

SCALE 1" = 50'

V&M
Vaughn & Melton
Consulting Engineers

Asheville, NC
828-253-2756

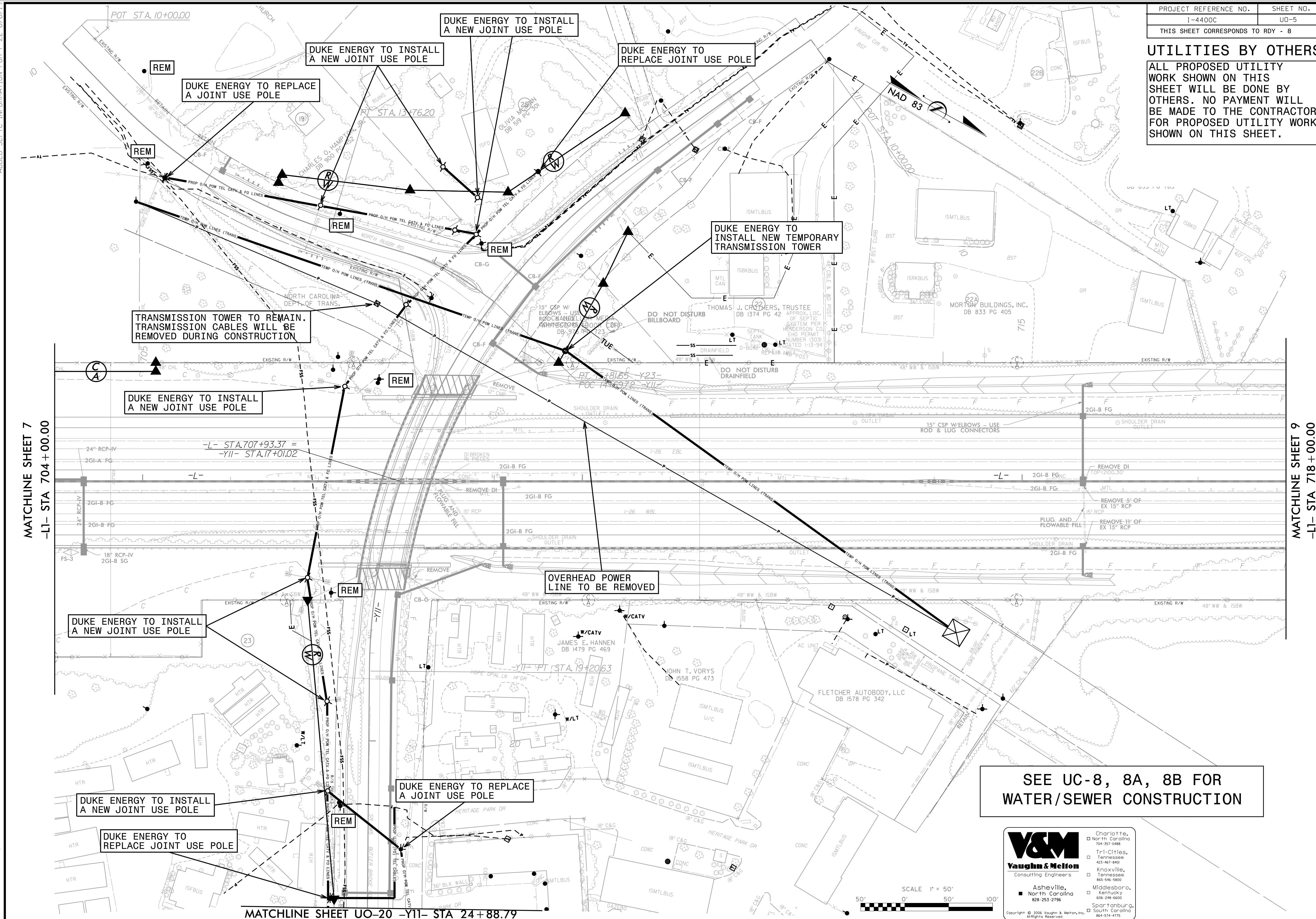
- Charlotte, NC 704-357-0488
- North Carolina 423-867-8400
- Tri-Cities, Tennessee 865-546-5800
- Kentucky 606-248-6600
- Middlesboro, Kentucky 864-374-4775
- South Carolina
- Spartanburg, SC

Copyright © 2006 Vaughn & Melton, Inc. All Rights Reserved.

V:\Asheville\transportation\31733-01_I-4400C_HNTB_I-26_MM40-44\Utilities\I4400C_UT_PS#07_U07.DGN

UTILITIES BY OTHERS

ALL PROPOSED UTILITY WORK SHOWN ON THIS SHEET WILL BE DONE BY OTHERS. NO PAYMENT WILL BE MADE TO THE CONTRACTOR FOR PROPOSED UTILITY WORK SHOWN ON THIS SHEET.



SEE UC-8, 8A, 8B FOR WATER/SEWER CONSTRUCTION

V&M
Vaughn & Melton
 Consulting Engineers

Asheville, North Carolina
 828-253-2796

Charlotte, North Carolina
 704-357-0488

Tri-Cities, Tennessee
 423-467-8900

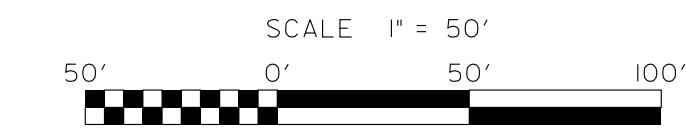
Knoxville, Tennessee
 615-546-5800

Middlesboro, Kentucky
 606-248-6600

Spartanburg, South Carolina
 864-574-4775

Copyright © 2006 Vaughn & Melton, Inc. All Rights Reserved.

8/6/18
 ADDED SEPTIC INFORMATION FOR P-22 6/6/19
 V:\Asheville\transportation\3173301\I-4400C\HNTB\I-26\MM40-44\Utilities\14400C_UT_PSH08_U08.DGN
 I-26 MM40-44 Utilities\14400C_UT_PSH08_U08.DGN

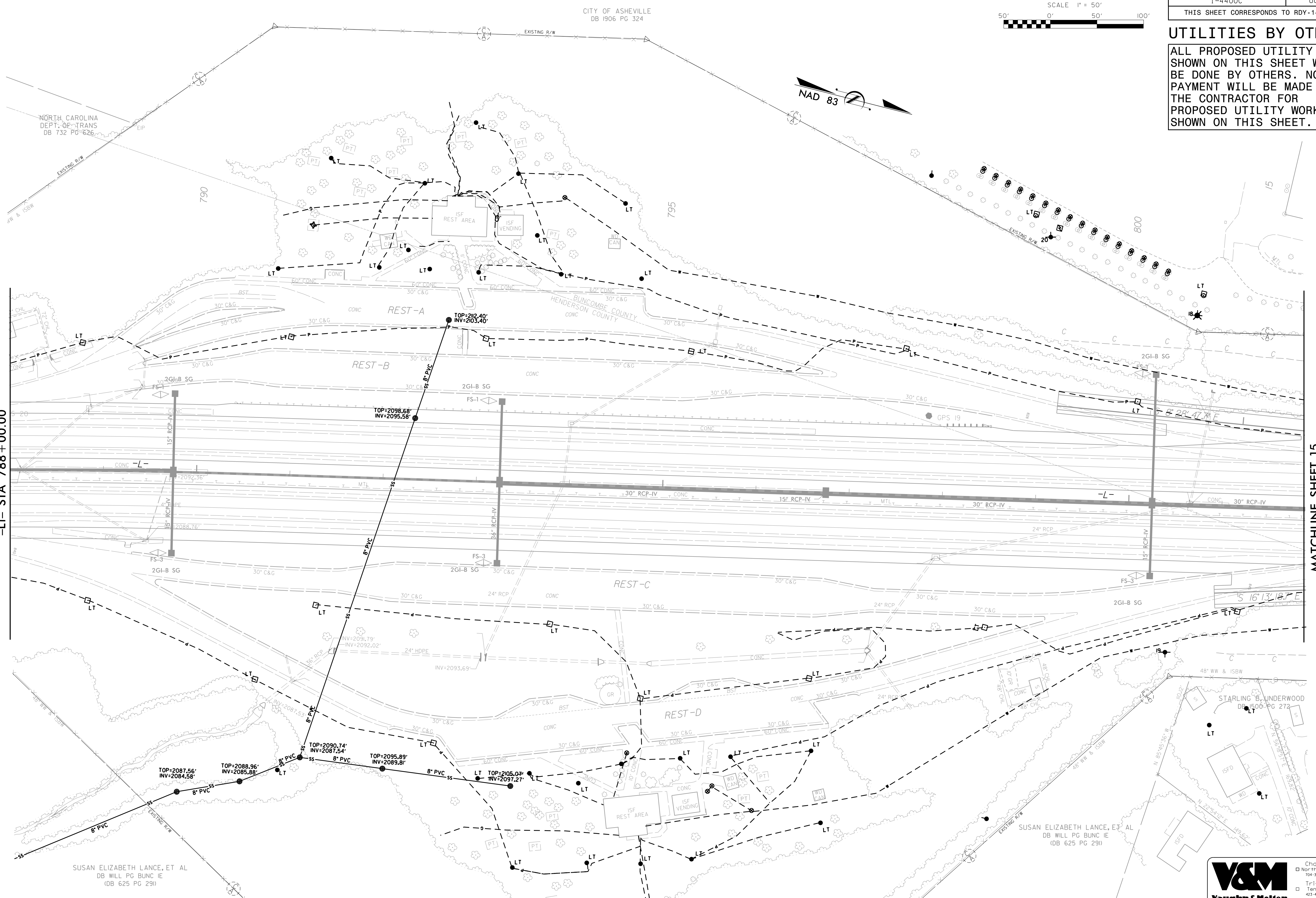


UTILITIES BY OTHERS

ALL PROPOSED UTILITY WORK SHOWN ON THIS SHEET WILL BE DONE BY OTHERS. NO PAYMENT WILL BE MADE TO THE CONTRACTOR FOR PROPOSED UTILITY WORK SHOWN ON THIS SHEET.

MATCHLINE SHEET 13
-L1- STA 788 + 00.00

MATCHLINE SHEET 15
-L1- STA 802 + 00.00



UG POWER IS ASSOCIATED WITH INTERSTATE LIGHTING.
PLEASE SEE LIGHTING PLANS FOR FURTHER INFORMATION

PLEASE SEE REST AREA PLANS
FOR ADDITIONAL INFORMATION

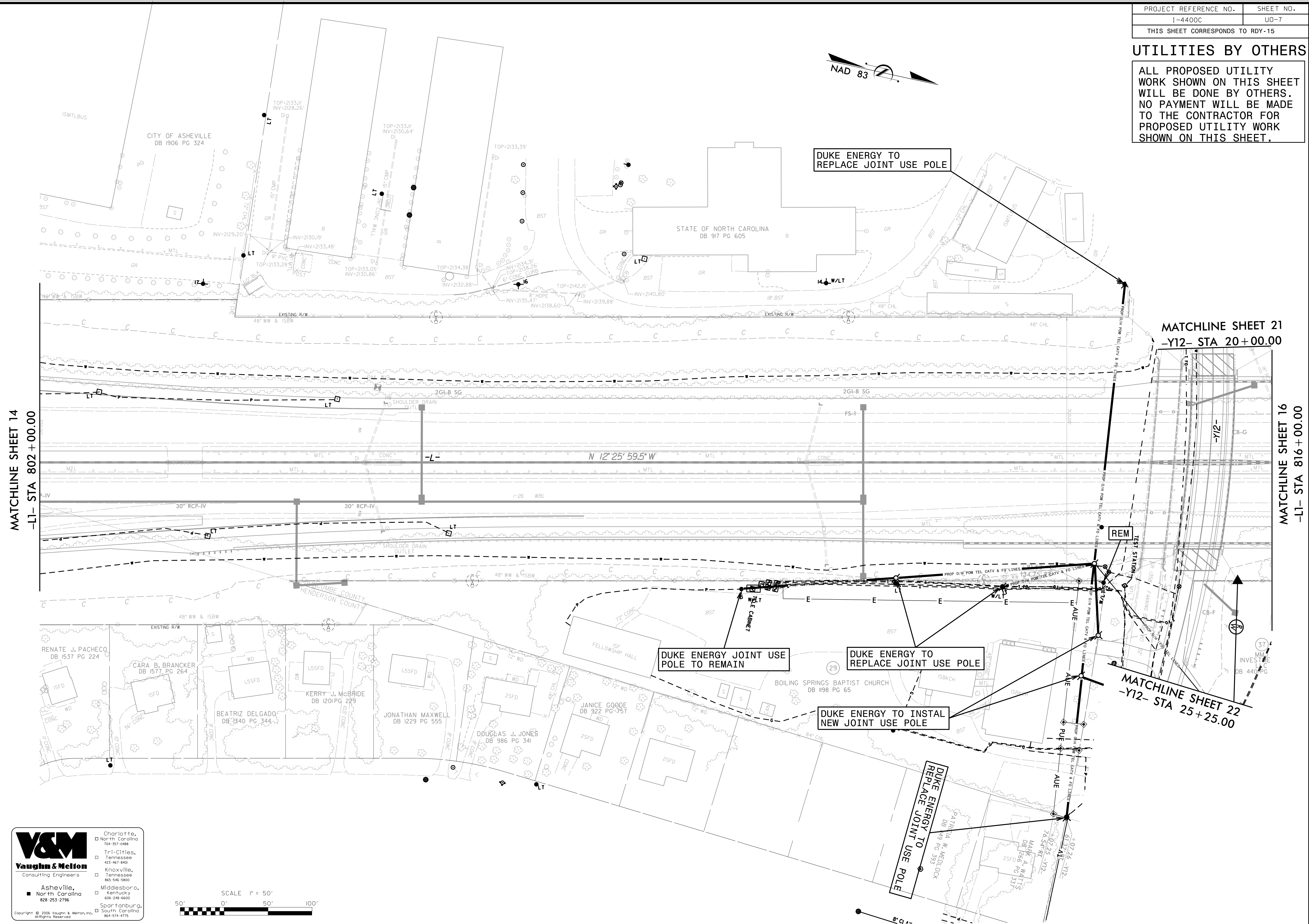
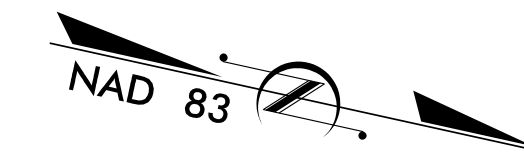
Charlotte, North Carolina 704-357-0488
Tri-Cities, Tennessee 423-467-8400
Knoxville, Tennessee 865-546-5800
Asheville, North Carolina 828-253-2796
Middleboro, Kentucky 606-248-6600
Spartanburg, South Carolina 864-574-4775

Copyright © 2006 Vaughn & Melton, Inc. All Rights Reserved.

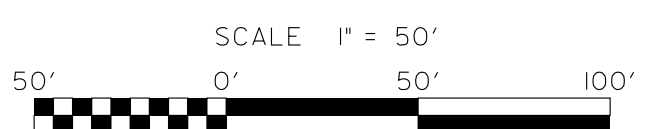
8/6/18
V:\Asheville\transportation\31733-01 I-4400C HNTB I-26 MW40-44\Utilities\I4400C-UT-PSH4-U014.DGN

UTILITIES BY OTHERS

ALL PROPOSED UTILITY WORK SHOWN ON THIS SHEET WILL BE DONE BY OTHERS. NO PAYMENT WILL BE MADE TO THE CONTRACTOR FOR PROPOSED UTILITY WORK SHOWN ON THIS SHEET.



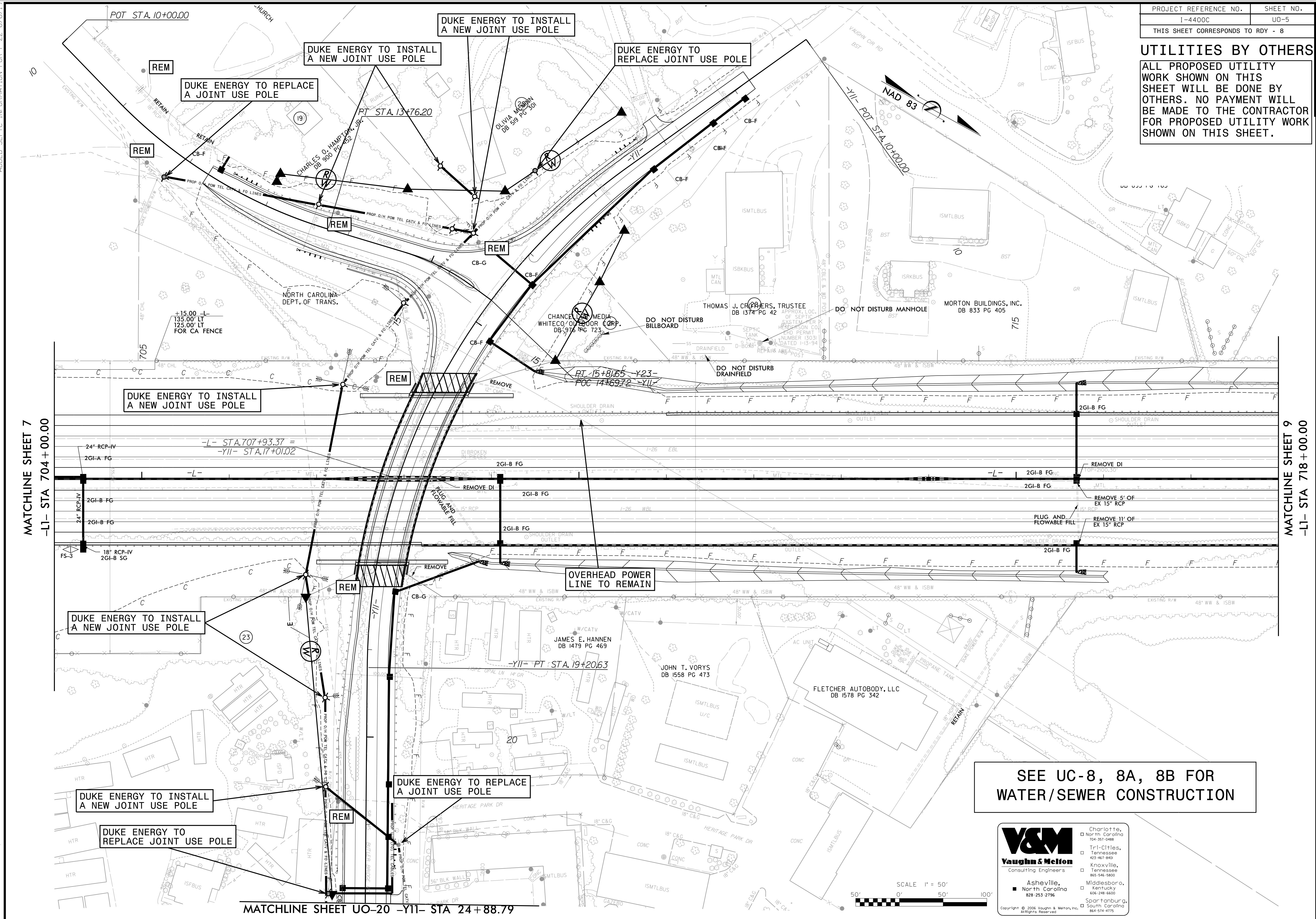
Charlotte, North Carolina 704-357-0488
 Tri-Cities, Tennessee 423-867-9400
 Knoxville, Tennessee 865-546-5800
 Middleboro, Kentucky 606-248-6600
 Spartanburg, South Carolina 864-574-0775
 Asheville, North Carolina 828-253-2796



V:\Asheville\transportation\31733-01 I-4400C HNTB I-26 MM40-44\Utilities\I4400C_UF_PSH15.U015 8/6/18

UTILITIES BY OTHERS

ALL PROPOSED UTILITY WORK SHOWN ON THIS SHEET WILL BE DONE BY OTHERS. NO PAYMENT WILL BE MADE TO THE CONTRACTOR FOR PROPOSED UTILITY WORK SHOWN ON THIS SHEET.



MATCHLINE SHEET 7
-L1- STA 704 + 00.00

MATCHLINE SHEET 9
-L1- STA 718 + 00.00

MATCHLINE SHEET UO-20 -Y11- STA 24 + 88.79

SEE UC-8, 8A, 8B FOR WATER/SEWER CONSTRUCTION

V&M
Vaughn & Melton
Consulting Engineers

Asheville, North Carolina
828-253-2796

Charlotte, North Carolina
704-357-0488

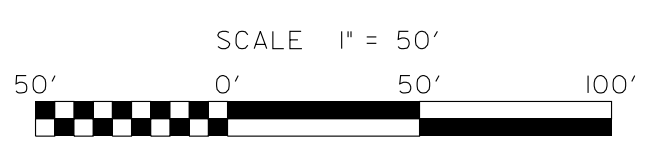
Tri-Cities, Tennessee
423-467-8900

Knoxville, Tennessee
615-546-5800

Middlesboro, Kentucky
606-248-6600

Spartanburg, South Carolina
864-574-4775

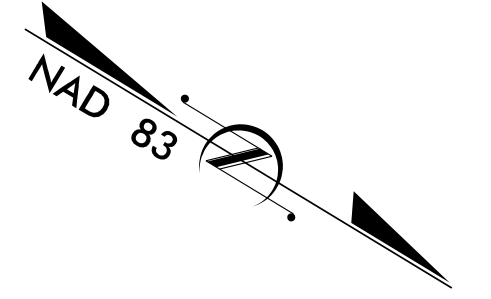
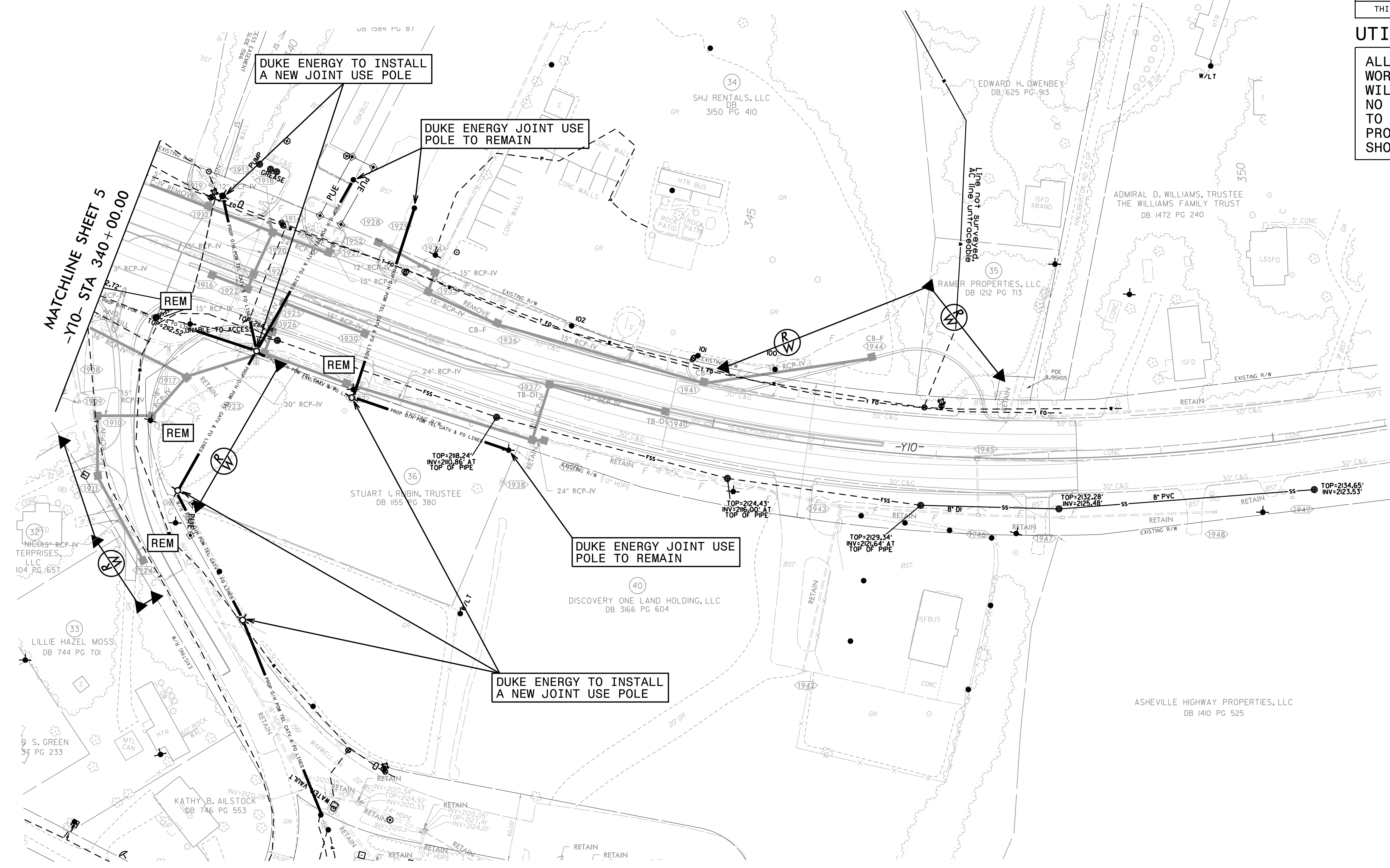
Copyright © 2006 Vaughn & Melton, Inc. All Rights Reserved.



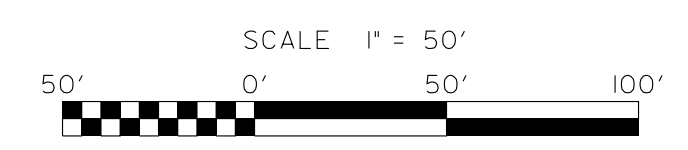
8/6/18
ADDED SEPTIC INFORMATION FOR P-22 6/6/19
V:\Asheville\transportation\3173301\I-4400C\HNTB\I-26\MM40-44\Utilities\14400C_UT_PSH08_U08.DGN

UTILITIES BY OTHERS

ALL PROPOSED UTILITY WORK SHOWN ON THIS SHEET WILL BE DONE BY OTHERS. NO PAYMENT WILL BE MADE TO THE CONTRACTOR FOR PROPOSED UTILITY WORK SHOWN ON THIS SHEET.



SEE UC-19, UC-19A FOR WATER/SEWER CONSTRUCTION



V&M
Vaughn & Melton
Consulting Engineers

Charlotte, North Carolina 704-351-0488	Tri-Cities, Tennessee 423-461-8400
Asheville, North Carolina 828-253-2796	Knoxville, Tennessee 865-546-1800
	Middlesboro, Kentucky 606-248-6600
	Spartanburg, South Carolina 864-574-4715

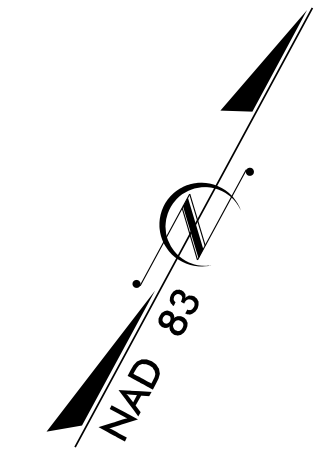
Copyright © 2006 Vaughn & Melton, Inc. All Rights Reserved.

V:\Asheville\transportation\I-4400C_HNTB_I-26_MM40-44\Utilities\I4400C_UT_PSHI9_U019 8/28/18

PROJECT REFERENCE NO.	SHEET NO.
I-4400C	UG-10
THIS SHEET CORRESPONDS TO RDY-20	

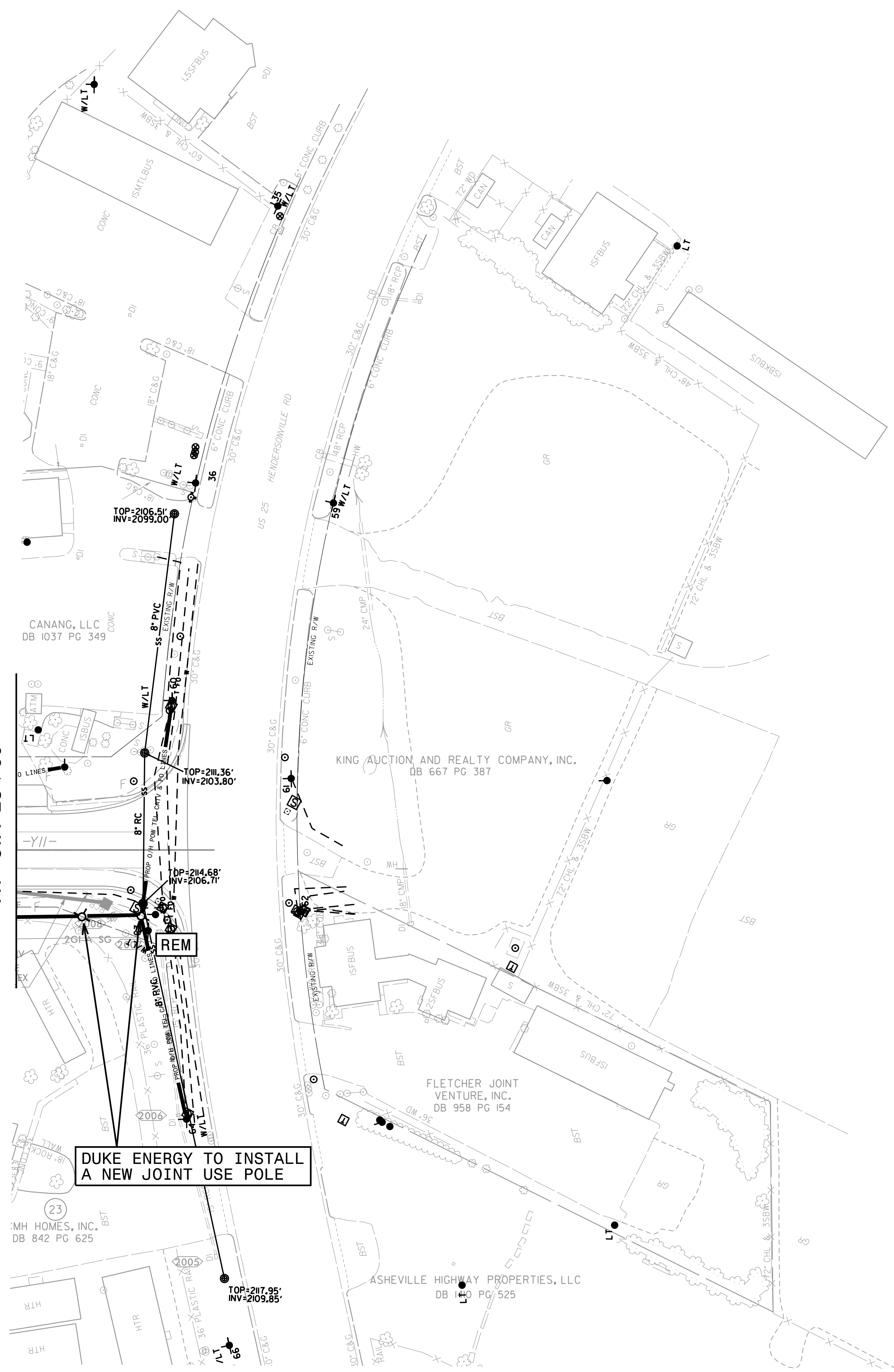
UTILITIES BY OTHERS

ALL PROPOSED UTILITY WORK SHOWN ON THIS SHEET WILL BE DONE BY OTHERS. NO PAYMENT WILL BE MADE TO THE CONTRACTOR FOR PROPOSED UTILITY WORK SHOWN ON THIS SHEET.

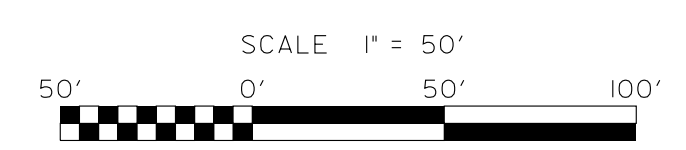


8/6/18
Va\Asheville\transportation\I-4400C-HNTB_I-26_MM40-44\Utilities\I-4400C-UT_PSHZ0-UG20

MATCHLINE SHEET 8
-Y11- STA 25+00



**SEE UC-20 FOR
WATER/SEWER CONSTRUCTION**



V&M
Vaughn & Melton
Consulting Engineers

Asheville, North Carolina 828-253-2796

Charlotte, North Carolina 704-357-0488
Tri-Cities, Tennessee 423-867-3400
Knoxville, Tennessee 865-546-5800
Middlesboro, Kentucky 606-248-6600
Spartanburg, South Carolina 864-574-4175

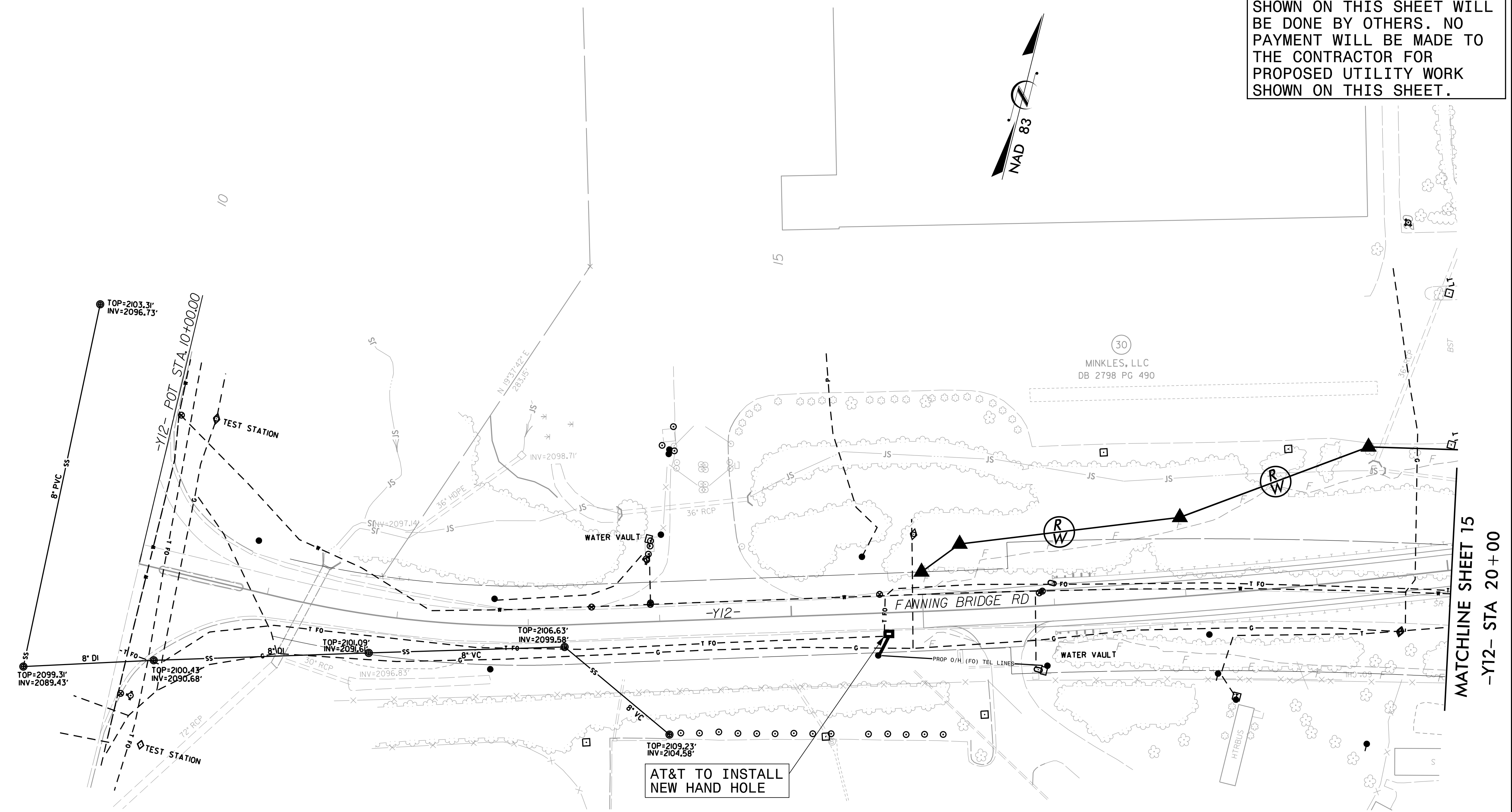
Copyright © 2006 Vaughn & Melton, Inc. All Rights Reserved.

PROJECT REFERENCE NO.	SHEET NO.
I-4400C	U0-11
THIS SHEET CORRESPONDS TO RDY-21	

UTILITIES BY OTHERS

ALL PROPOSED UTILITY WORK SHOWN ON THIS SHEET WILL BE DONE BY OTHERS. NO PAYMENT WILL BE MADE TO THE CONTRACTOR FOR PROPOSED UTILITY WORK SHOWN ON THIS SHEET.

5/14/99
 V:\Asheville\transportation\2-01 I-4400C HNTB I-26 MM40-44 Utilities\I4400C_UT_PSH2L\U02L.DGN

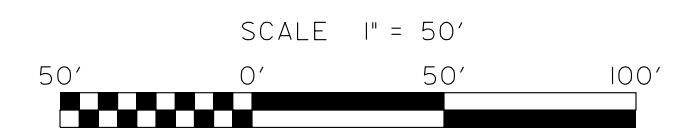


MATCHLINE SHEET 15
 -Y12- STA 20+00

V&M
Vaughn & Melton
 Consulting Engineers

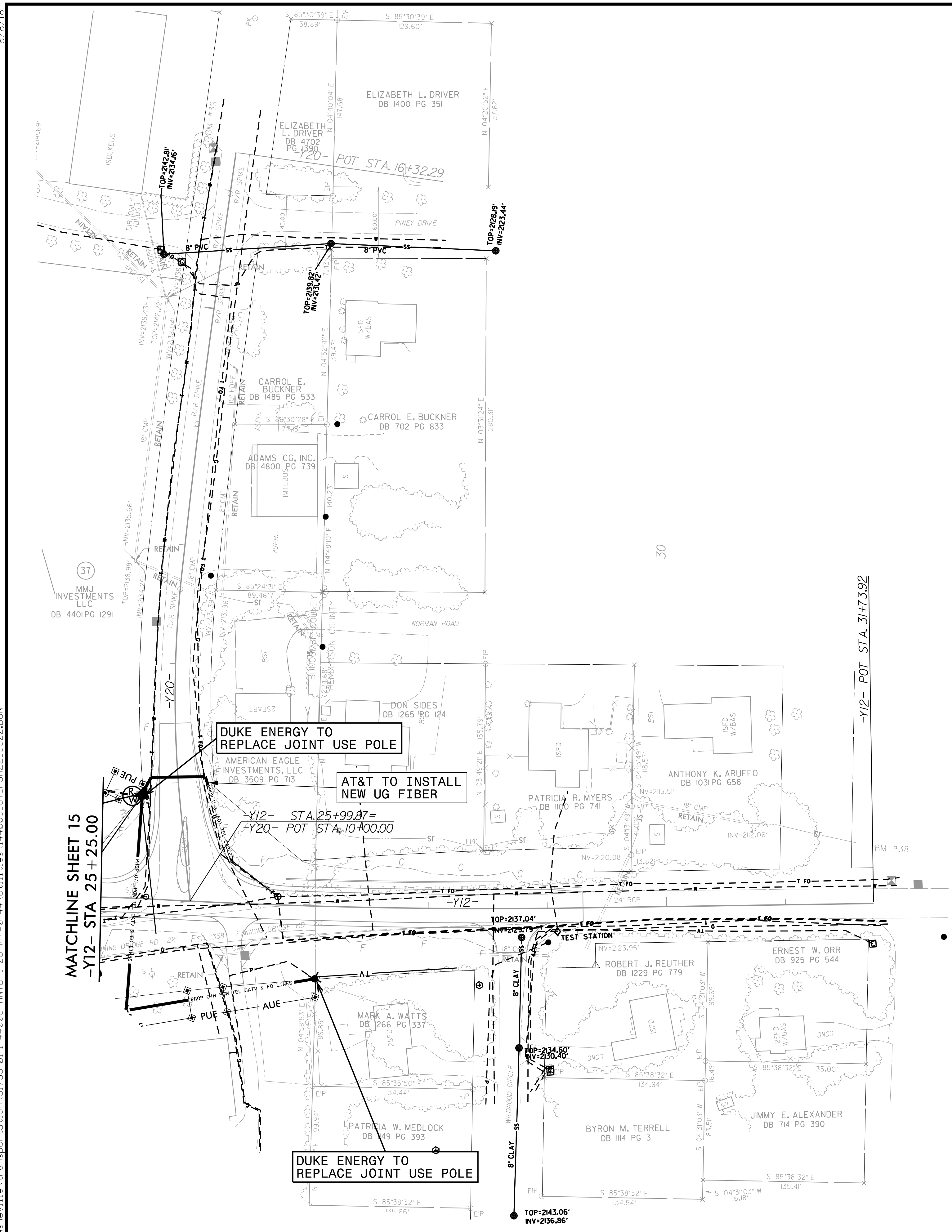
Asheville, North Carolina 828-253-2796	Charlotte, North Carolina 704-357-0488	Tri-Cities, Tennessee 423-867-3400	Knoxville, Tennessee 865-546-5800
Middlesboro, Kentucky 606-248-6600	Spartanburg, South Carolina 864-534-4175		

Copyright © 2006 Vaughn & Melton, Inc.
 All Rights Reserved.



UTILITIES BY OTHERS

ALL PROPOSED UTILITY WORK SHOWN ON THIS SHEET WILL BE DONE BY OTHERS. NO PAYMENT WILL BE MADE TO THE CONTRACTOR FOR PROPOSED UTILITY WORK SHOWN ON THIS SHEET.



MATCHLINE SHEET 15
-Y12- STA 25 + 25.00

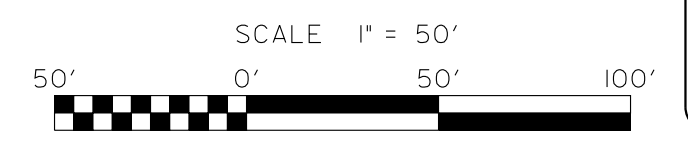
DUKE ENERGY TO REPLACE JOINT USE POLE

AT&T TO INSTALL NEW UG FIBER

-Y12- STA. 25+99.87=
-Y20- POT STA. 10+00.00

DUKE ENERGY TO REPLACE JOINT USE POLE

-Y12- POT STA. 31+73.92



V&M
Vaughn & Melton
Consulting Engineers

Asheville, North Carolina 828-253-2196	Charlotte, North Carolina 704-351-0488	Tri-Cities, Tennessee 423-487-8900	Knoxville, Tennessee 865-546-9800	Middlesboro, Kentucky 606-248-6600	Spartanburg, South Carolina 803-534-4775
---	---	---------------------------------------	--------------------------------------	---------------------------------------	---

Copyright © 2006 Vaughn & Melton, Inc. All Rights Reserved.

8/78/18
I:\Asheville\transportation\31733-01\I-4400C\HNTB\I-26\MM40-44\Utilities\I4400C_UT_PSH22_U022.DGN