

**This electronic collection of documents is provided
for the convenience of the user
and is Not a Certified Document –**

**The documents contained herein were originally issued
and sealed by the individuals whose names and license
numbers appear on each page, on the dates appearing
with their signature on that page.**

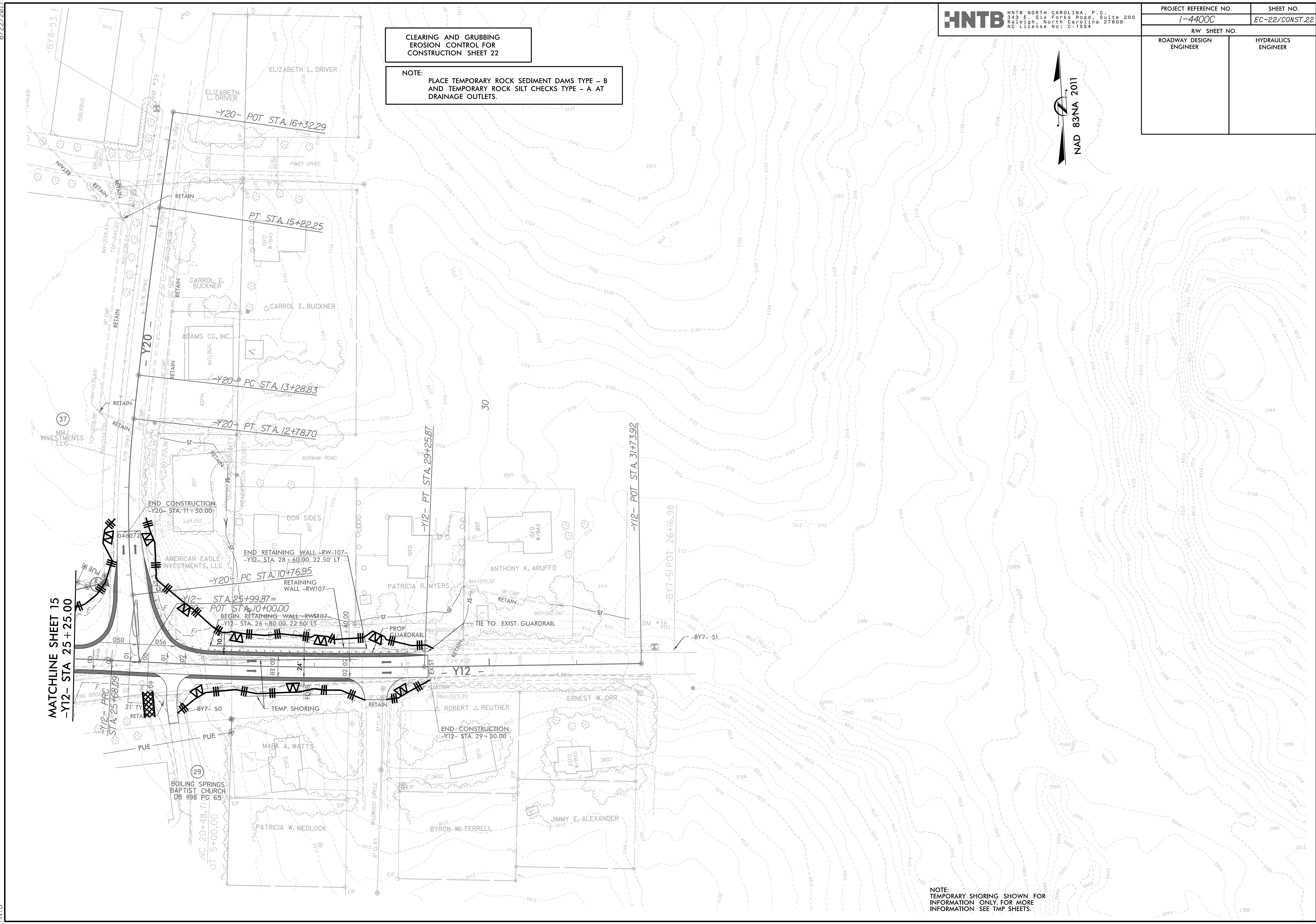
**This file or an individual page
shall not be considered a certified document.**

8/22/2017

PROJECT REFERENCE NO.	SHEET NO.
1-4400C	EC-22/CONST.22
RW SHEET NO.	
ROADWAY DESIGN ENGINEER	HYDRAULICS ENGINEER

CLEARING AND GRUBBING
 EROSION CONTROL FOR
 CONSTRUCTION SHEET 22

NOTE:
 PLACE TEMPORARY ROCK SEDIMENT DAMS TYPE - B
 AND TEMPORARY ROCK SILT CHECKS TYPE - A AT
 DRAINAGE OUTLETS.

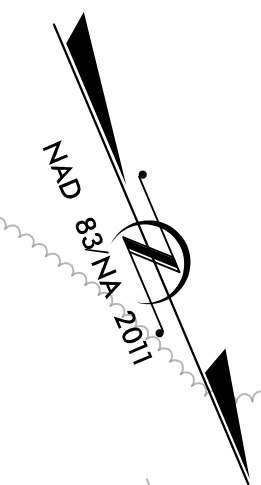
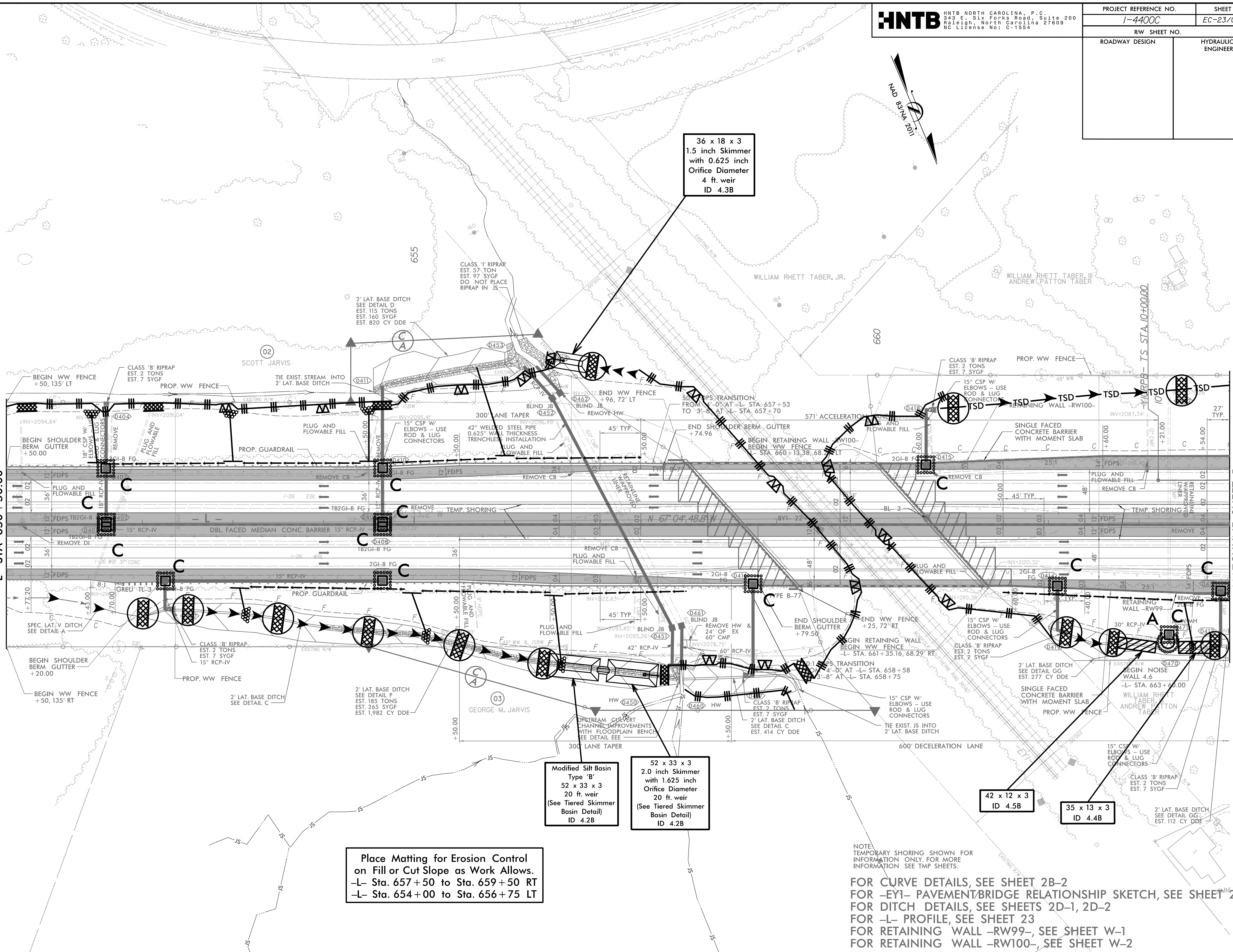


7/19/2017

PROJECT REFERENCE NO.	SHEET NO.
1-4400C	EC-23/CONST.4
RW SHEET NO.	HYDRAULICS ENGINEER
ROADWAY DESIGN	

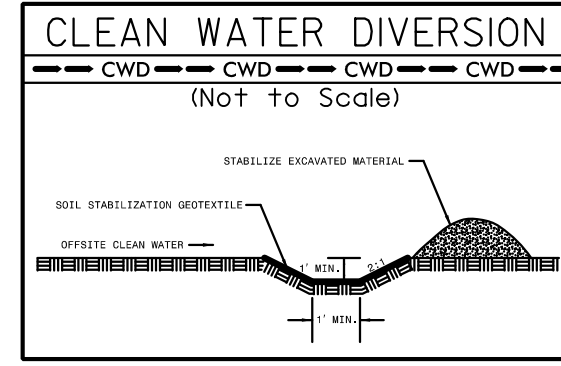
MATCHLINE I-4400BB
-L- STA 650 + 50.00

MATCHLINE SHEET 5
-L- STA 664 + 00.00

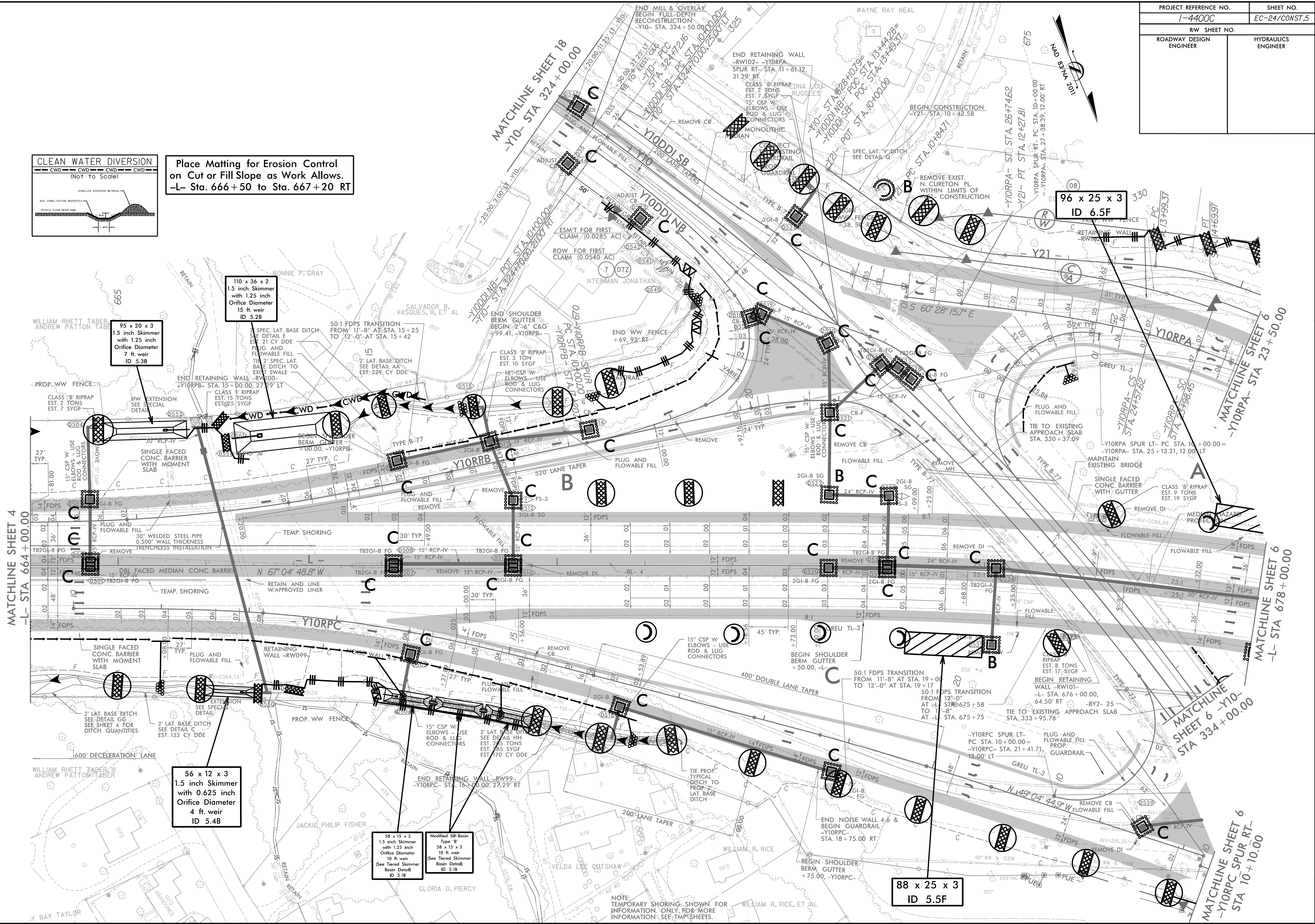


4/8/2016
 4400C.dgn
 HNTB

PROJECT REFERENCE NO.	SHEET NO.
1-4400C	EC-24/CONST.5
RW SHEET NO.	
ROADWAY DESIGN ENGINEER	HYDRAULICS ENGINEER



Place Matting for Erosion Control on Cut or Fill Slope as Work Allows.
 -L- Sta. 666+50 to Sta. 667+20 RT



95 x 20 x 3
1.5 inch Skimmer
with 1.25 inch
Orifice Diameter
7 ft. weir
ID 5.3B

110 x 36 x 2
1.5 inch Skimmer
with 1.25 inch
Orifice Diameter
15 ft. weir
ID 5.2B

56 x 12 x 3
1.5 inch Skimmer
with 0.625 inch
Orifice Diameter
4 ft. weir
ID 5.4B

58 x 15 x 3
1.5 inch Skimmer
with 1.25 inch
Orifice Diameter
10 ft. weir
(See Tiered Skimmer
Basin Detail)
ID 5.1B

Modified Silt Basin
Type 'B'
58 x 15 x 3
10 ft. weir
(See Tiered Skimmer
Basin Detail)
ID 5.1B

88 x 25 x 3
ID 5.5F

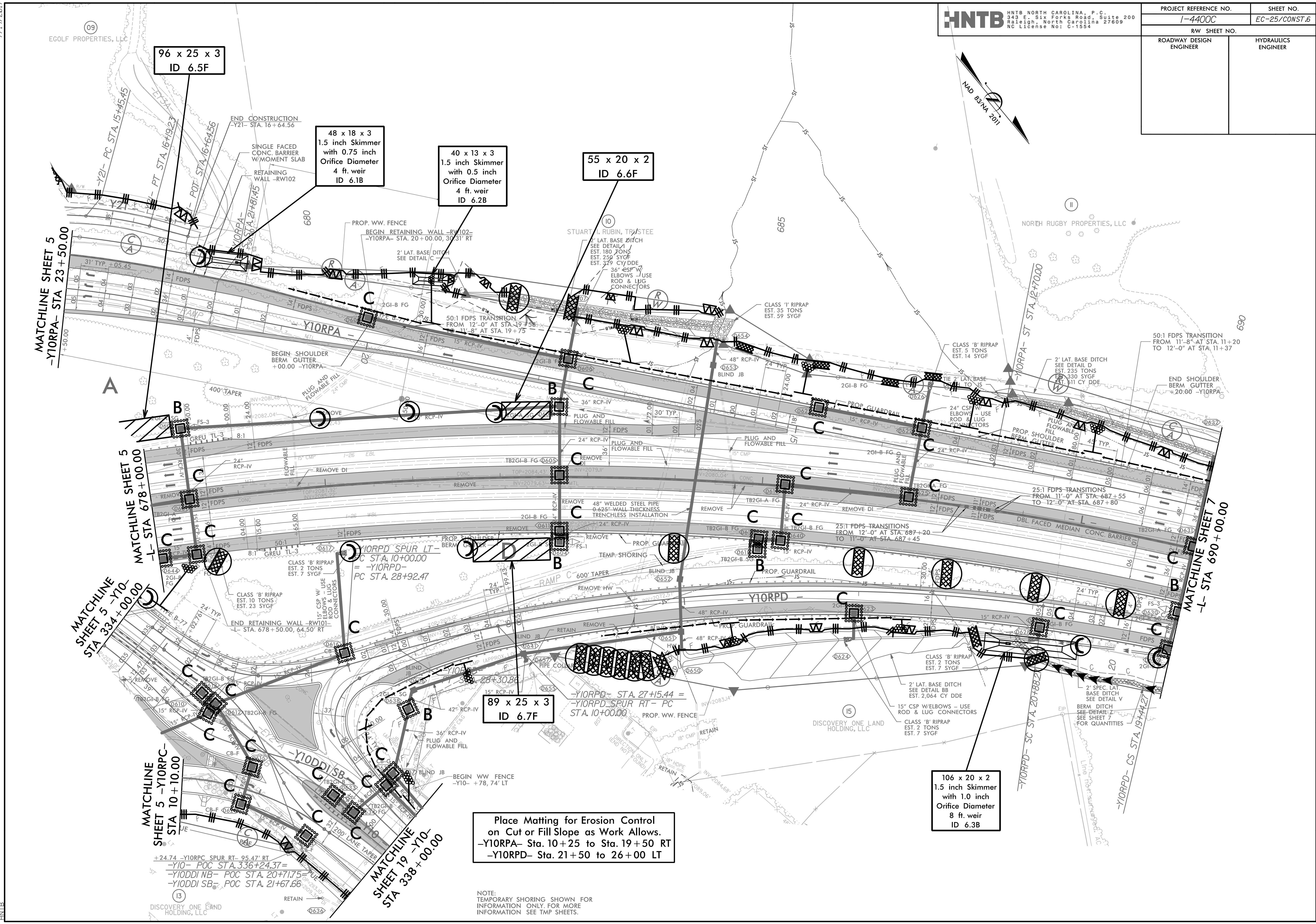
96 x 25 x 3
ID 6.5F

NOTE:
TEMPORARY SHORING SHOWN FOR
INFORMATION ONLY FOR MORE
INFORMATION SEE TMP SHEETS.

8/17/99
4/8/2019
C:\pdm\14400C_HYD_EC_PSH5.dgn
PSH5

7/19/2017

PROJECT REFERENCE NO.	SHEET NO.
1-4400C	EC-25/CONST.6
RW SHEET NO.	
ROADWAY DESIGN ENGINEER	HYDRAULICS ENGINEER



96 x 25 x 3
ID 6.5F

48 x 18 x 3
1.5 inch Skimmer
with 0.75 inch
Orifice Diameter
4 ft. weir
ID 6.1B

40 x 13 x 3
1.5 inch Skimmer
with 0.5 inch
Orifice Diameter
4 ft. weir
ID 6.2B

55 x 20 x 2
ID 6.6F

89 x 25 x 3
ID 6.7F

106 x 20 x 2
1.5 inch Skimmer
with 1.0 inch
Orifice Diameter
8 ft. weir
ID 6.3B

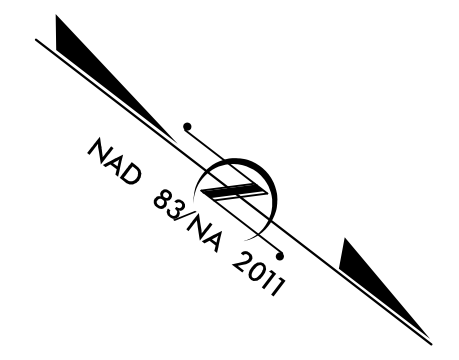
Place Matting for Erosion Control
on Cut or Fill Slope as Work Allows.
-YIORPA- Sta. 10+25 to Sta. 19+50 RT
-YIORPD- Sta. 21+50 to 26+00 LT

NOTE:
TEMPORARY SHORING SHOWN FOR
INFORMATION ONLY. FOR MORE
INFORMATION SEE TMP SHEETS.

3/28/2018
343 E. Six Forks Road, Suite 200
Raleigh, NC 27609
HNTB

PROJECT REFERENCE NO.	SHEET NO.
1-4400C	EC-26/CONST.7
RW SHEET NO.	
ROADWAY DESIGN ENGINEER	HYDRAULICS ENGINEER

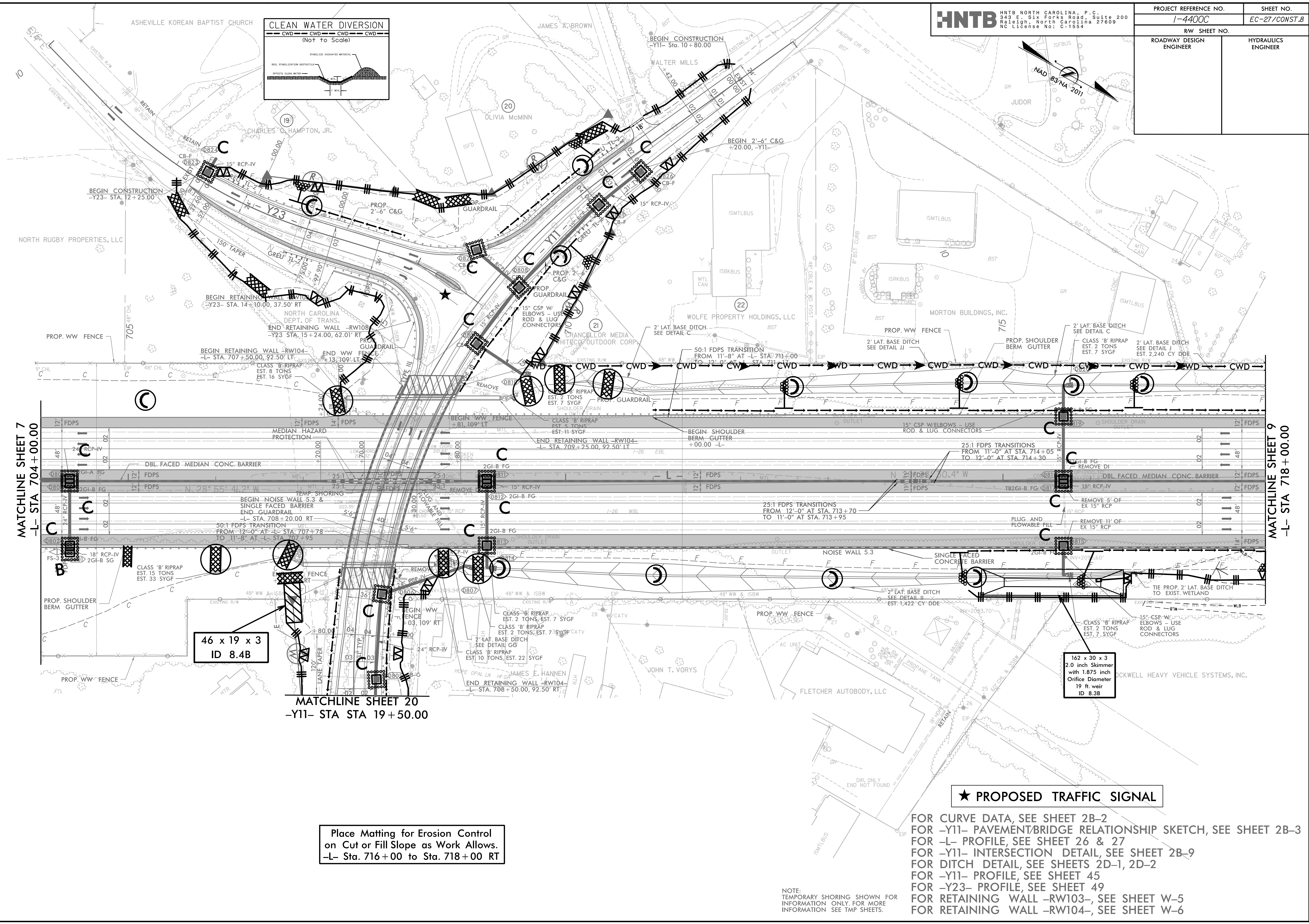
Place Matting for Erosion Control
on Cut or Fill Slope as Work Allows.
-L- Sta. 690+00 to Sta. 691+00 LT



7/19/2017

HNTB
HNTB NORTH CAROLINA, P.C.
343 E. Six Forks Road, Suite 200
Raleigh, North Carolina 27609
NC License No: C-1554

PROJECT REFERENCE NO.	SHEET NO.
1-4400C	EC-27/CONST.B
RW SHEET NO.	
ROADWAY DESIGN ENGINEER	HYDRAULICS ENGINEER



4/8/2019
Design\14400C_HYO_EC_PSH8.dgn
HNTB

MATCHLINE SHEET 9
-L- STA 718+00.00

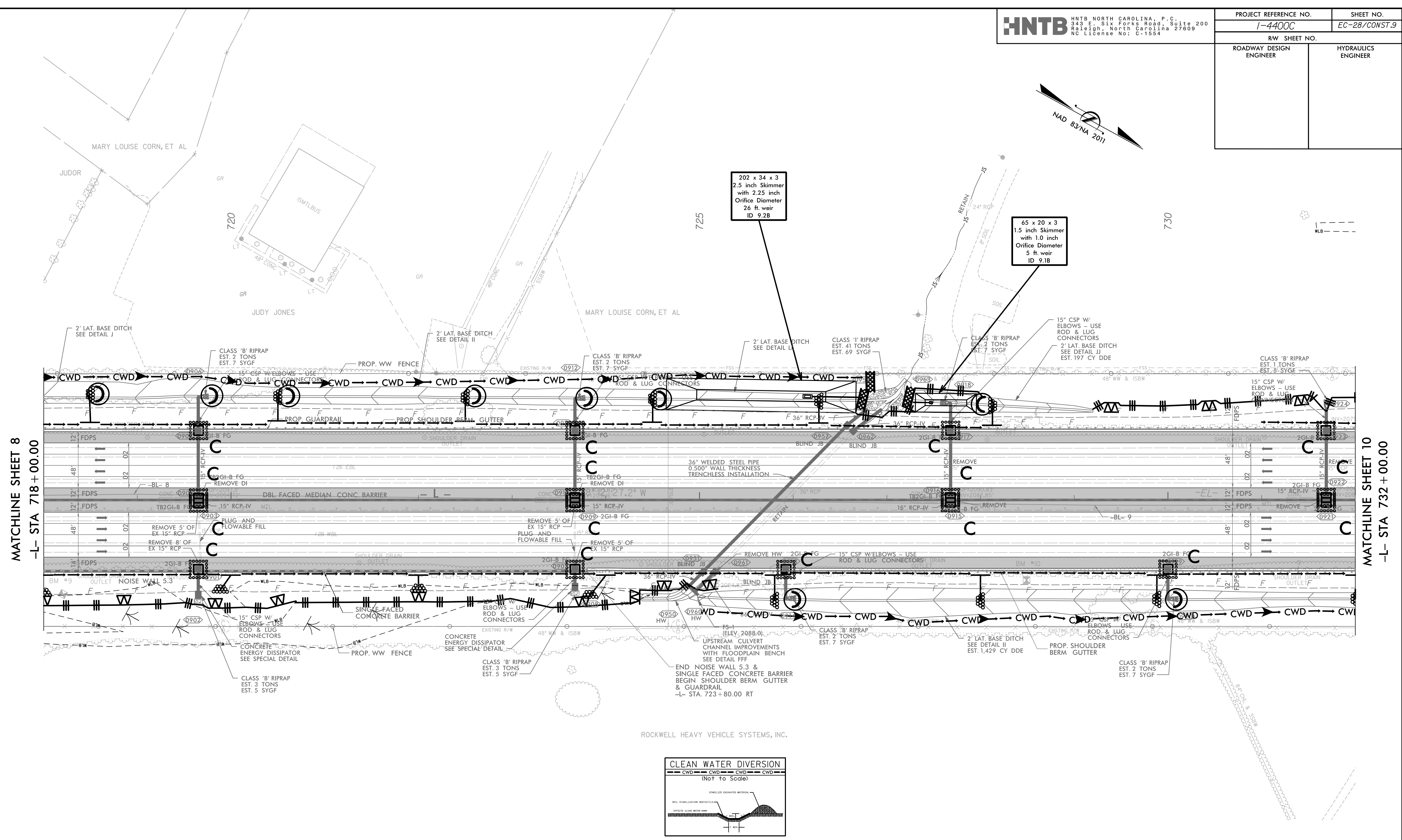
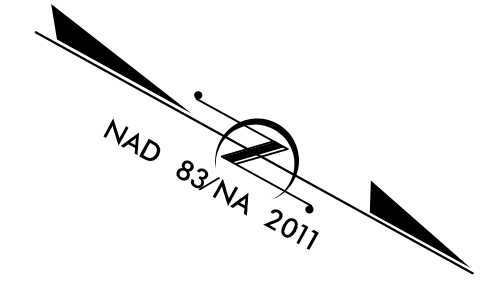
MATCHLINE SHEET 7
-L- STA 704+00.00

MATCHLINE SHEET 20
-Y11- STA STA 19+50.00

FOR CURVE DATA, SEE SHEET 2B-2
 FOR -Y11- PAVEMENT/BRIDGE RELATIONSHIP SKETCH, SEE SHEET 2B-3
 FOR -L- PROFILE, SEE SHEET 26 & 27
 FOR -Y11- INTERSECTION DETAIL, SEE SHEET 2B-9
 FOR DITCH DETAIL, SEE SHEETS 2D-1, 2D-2
 FOR -Y11- PROFILE, SEE SHEET 45
 FOR -Y23- PROFILE, SEE SHEET 49
 FOR RETAINING WALL -RW103-, SEE SHEET W-5
 FOR RETAINING WALL -RW104-, SEE SHEET W-6

7/19/2017

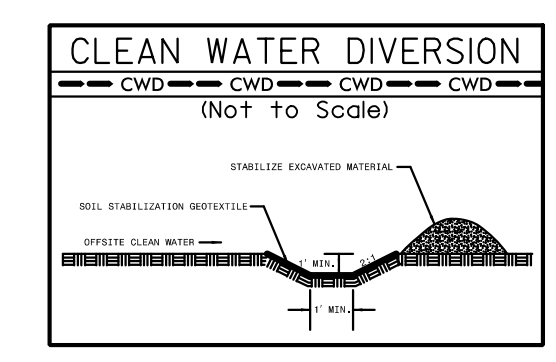
PROJECT REFERENCE NO.	SHEET NO.
1-4400C	EC-28/CONST.9
RW SHEET NO.	
ROADWAY DESIGN ENGINEER	HYDRAULICS ENGINEER



MATCHLINE SHEET 8
 -L- STA 718 + 00.00

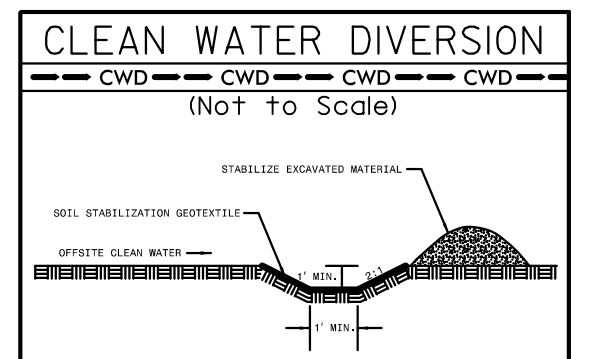
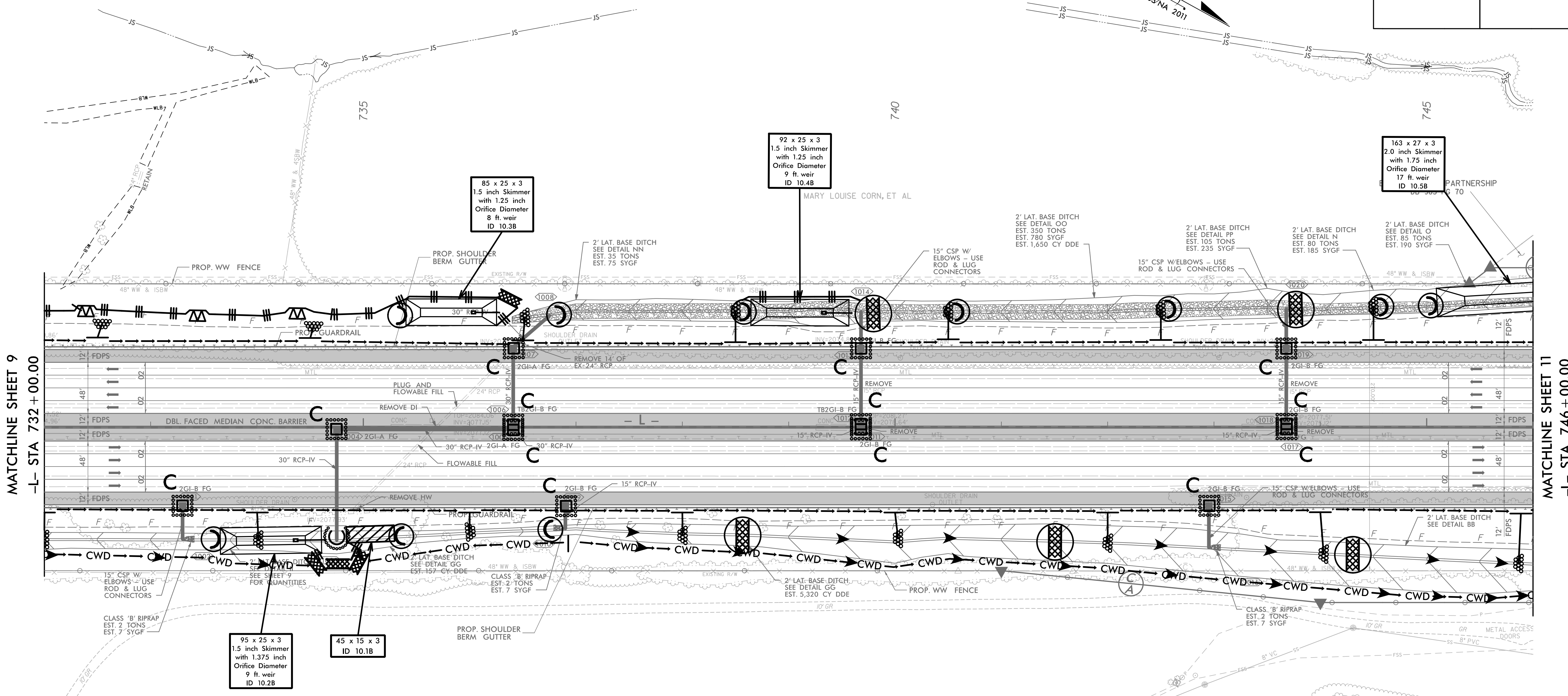
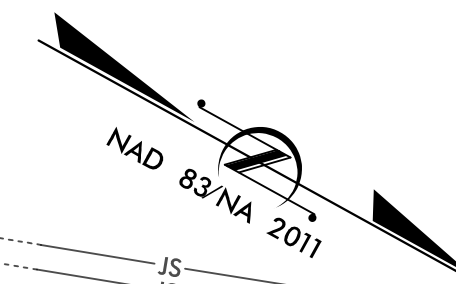
MATCHLINE SHEET 10
 -L- STA 732 + 00.00

Place Matting for Erosion Control
 on Cut or Fill Slope as Work Allows.
 -L- Sta. 718+00 to Sta. 725+00 RT



3/28/2019
 Design: 14400C_HYD_EC_PSH9.dgn
 HNTB

FOR CURVE DATA, SEE SHEET 2B-2
 FOR DITCH DETAIL, SEE SHEETS 2D-1, 2D-2
 FOR -L- PROFILE, SEE SHEET 27 & 28

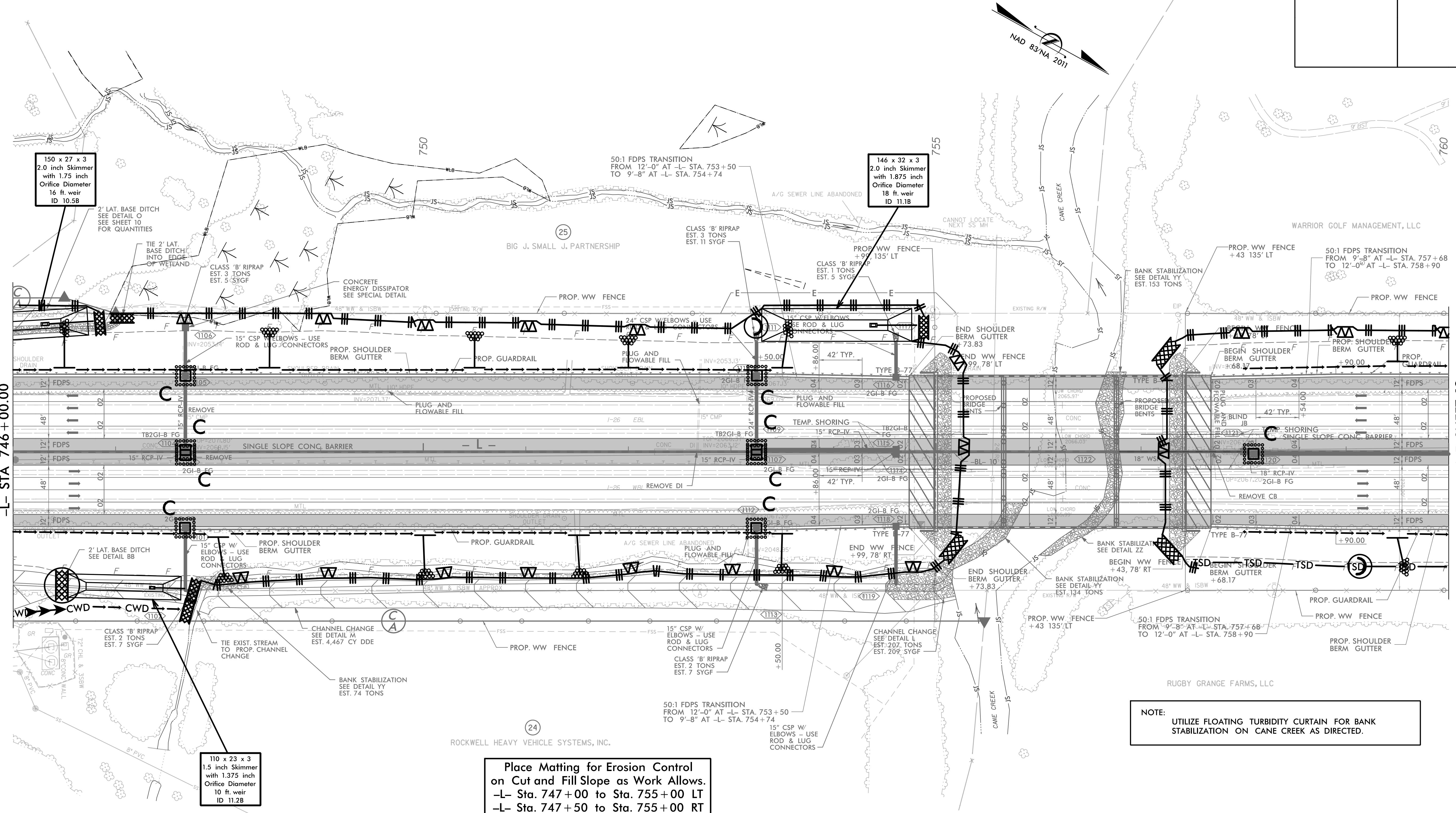


7/19/2017

PROJECT REFERENCE NO.	SHEET NO.
1-4400C	EC-30/CONST.II
RW SHEET NO.	
ROADWAY DESIGN ENGINEER	HYDRAULICS ENGINEER

MATCHLINE SHEET 10
-L- STA 746 + 00.00

MATCHLINE SHEET 12
-L- STA 760 + 00.00

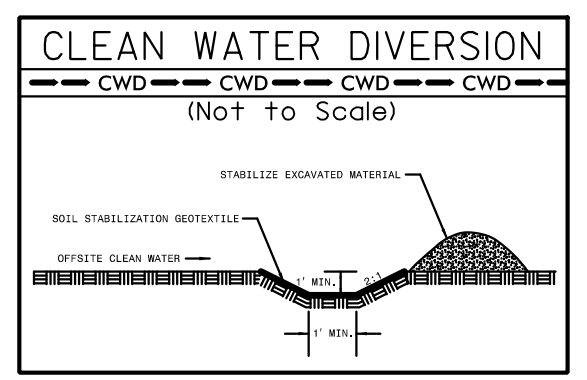


150 x 27 x 3
 2.0 inch Skimmer
 with 1.75 inch
 Orifice Diameter
 16 ft. weir
 ID 10.5B

146 x 32 x 3
 2.0 inch Skimmer
 with 1.875 inch
 Orifice Diameter
 18 ft. weir
 ID 11.1B

110 x 23 x 3
 1.5 inch Skimmer
 with 1.375 inch
 Orifice Diameter
 10 ft. weir
 ID 11.2B

**Place Matting for Erosion Control
 on Cut and Fill Slope as Work Allows.**
 -L- Sta. 747 + 00 to Sta. 755 + 00 LT
 -L- Sta. 747 + 50 to Sta. 755 + 00 RT

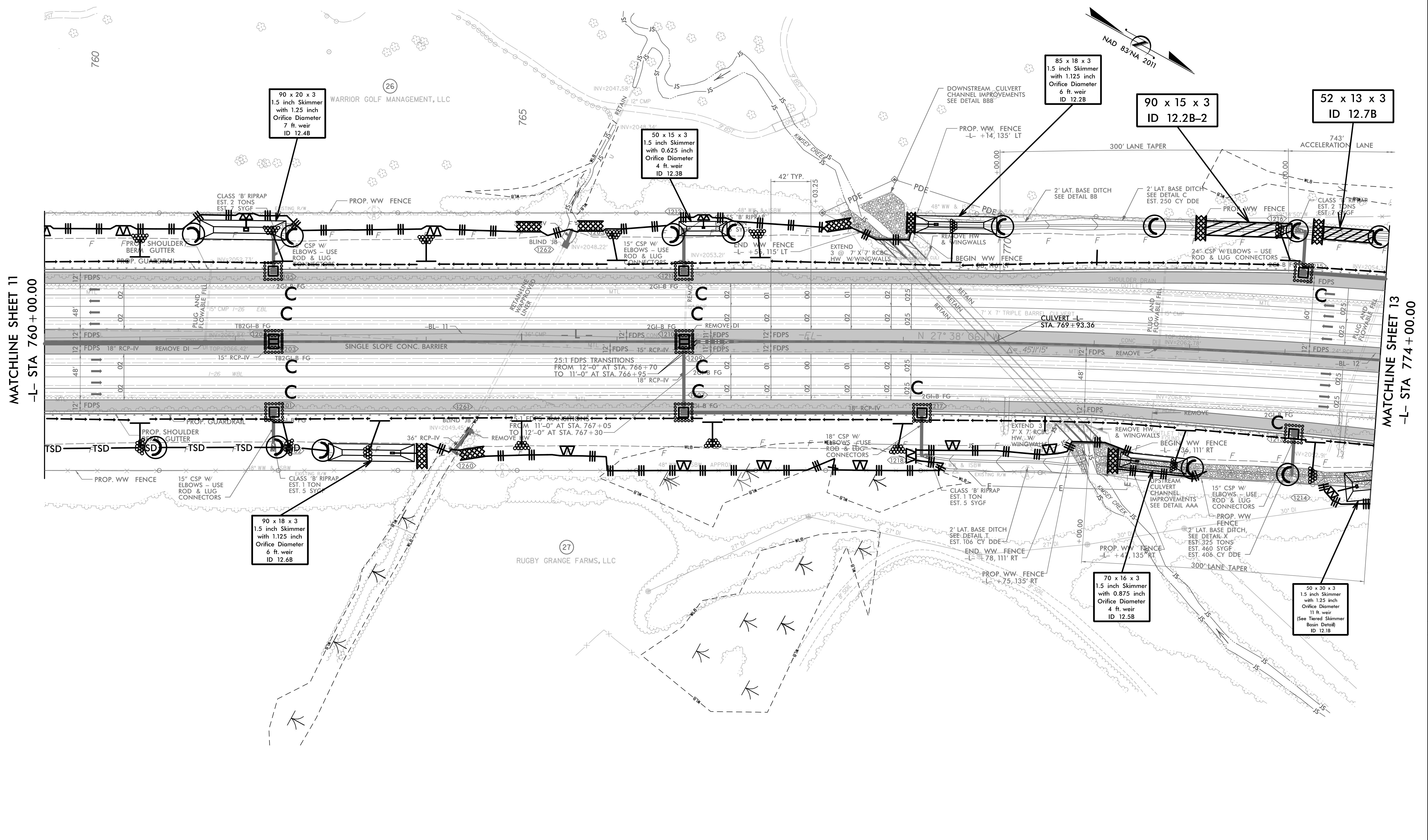


NOTE:
 UTILIZE FLOATING TURBIDITY CURTAIN FOR BANK
 STABILIZATION ON CANE CREEK AS DIRECTED.

NOTE:
 TEMPORARY SHORING SHOWN FOR
 INFORMATION ONLY. FOR MORE
 INFORMATION SEE TMP SHEETS.
 FOR CURVE DATA, SEE SHEET 2B-2
 FOR CANE CREEK PAVEMENT/BRIDGE RELATIONSHIP SKETCH, SEE SHEET 2B-3
 FOR DITCH DETAIL, SEE SHEETS 2D-1, 2D-2
 FOR -L- PROFILE, SEE SHEET 29 & 30

PROJECT REFERENCE NO.	SHEET NO.
1-4400C	EC-31/CONST.12
RW SHEET NO.	
ROADWAY DESIGN ENGINEER	HYDRAULICS ENGINEER

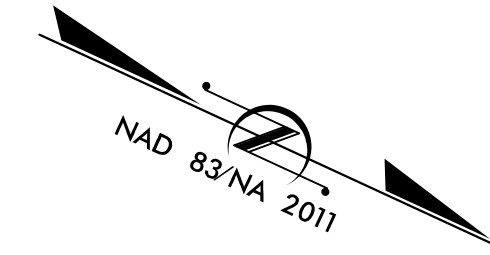
**Place Matting for Erosion Control
 on Cut or Fill Slope as Work Allows.**
 -L- Sta. 762+50 to Sta. 770+00 LT
 -L- Sta. 764+00 to Sta. 772+00 RT



MATCHLINE SHEET 11
 -L- STA 760+00.00

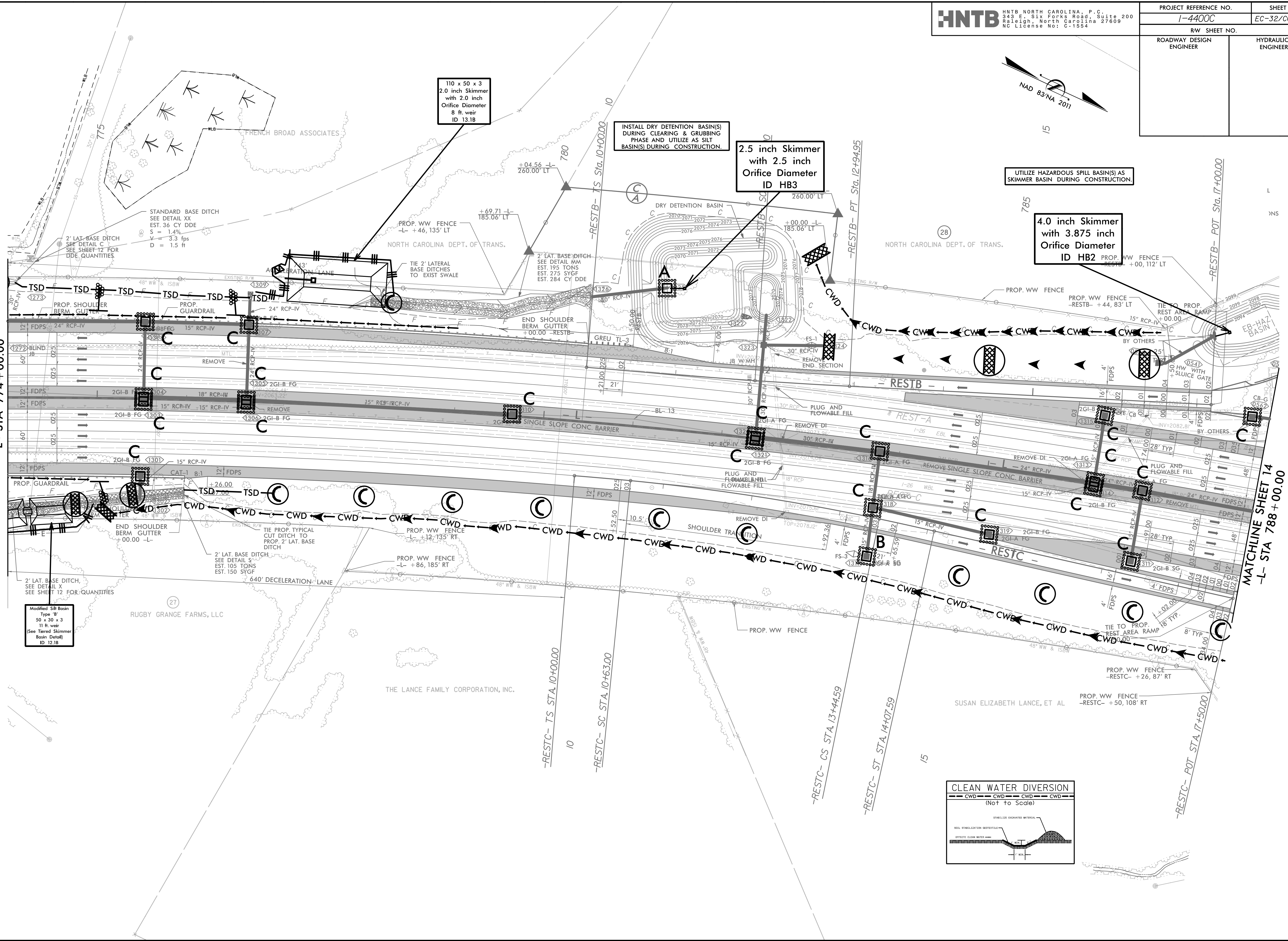
MATCHLINE SHEET 13
 -L- STA 774+00.00

PROJECT REFERENCE NO.	SHEET NO.
1-4400C	EC-32/CONST.13
RW SHEET NO.	
ROADWAY DESIGN ENGINEER	HYDRAULICS ENGINEER



MATCHLINE SHEET 12
-L- STA 774+00.00

MATCHLINE SHEET 14
-L- STA 788+00.00



110 x 50 x 3
2.0 inch Skimmer
with 2.0 inch
Orifice Diameter
8 ft. weir
ID 13.1B

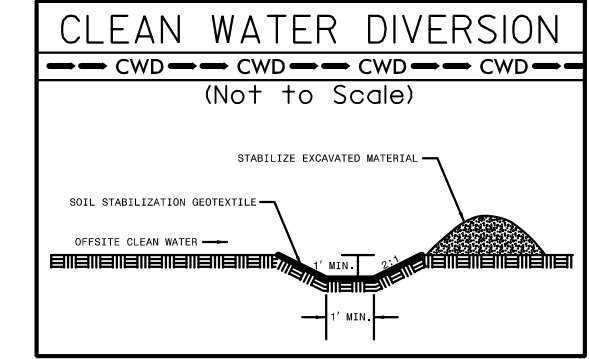
INSTALL DRY DETENTION BASIN(S)
DURING CLEARING & GRUBBING
PHASE AND UTILIZE AS SILT
BASIN(S) DURING CONSTRUCTION.

2.5 inch Skimmer
with 2.5 inch
Orifice Diameter
ID HB3

UTILIZE HAZARDOUS SPILL BASIN(S) AS
SKIMMER BASIN DURING CONSTRUCTION.

4.0 inch Skimmer
with 3.875 inch
Orifice Diameter
ID HB2

Modified Silt Basin
Type 'B'
50 x 30 x 3
11 ft. weir
(See Tiered Skimmer
Basin Detail)
ID 12.1B



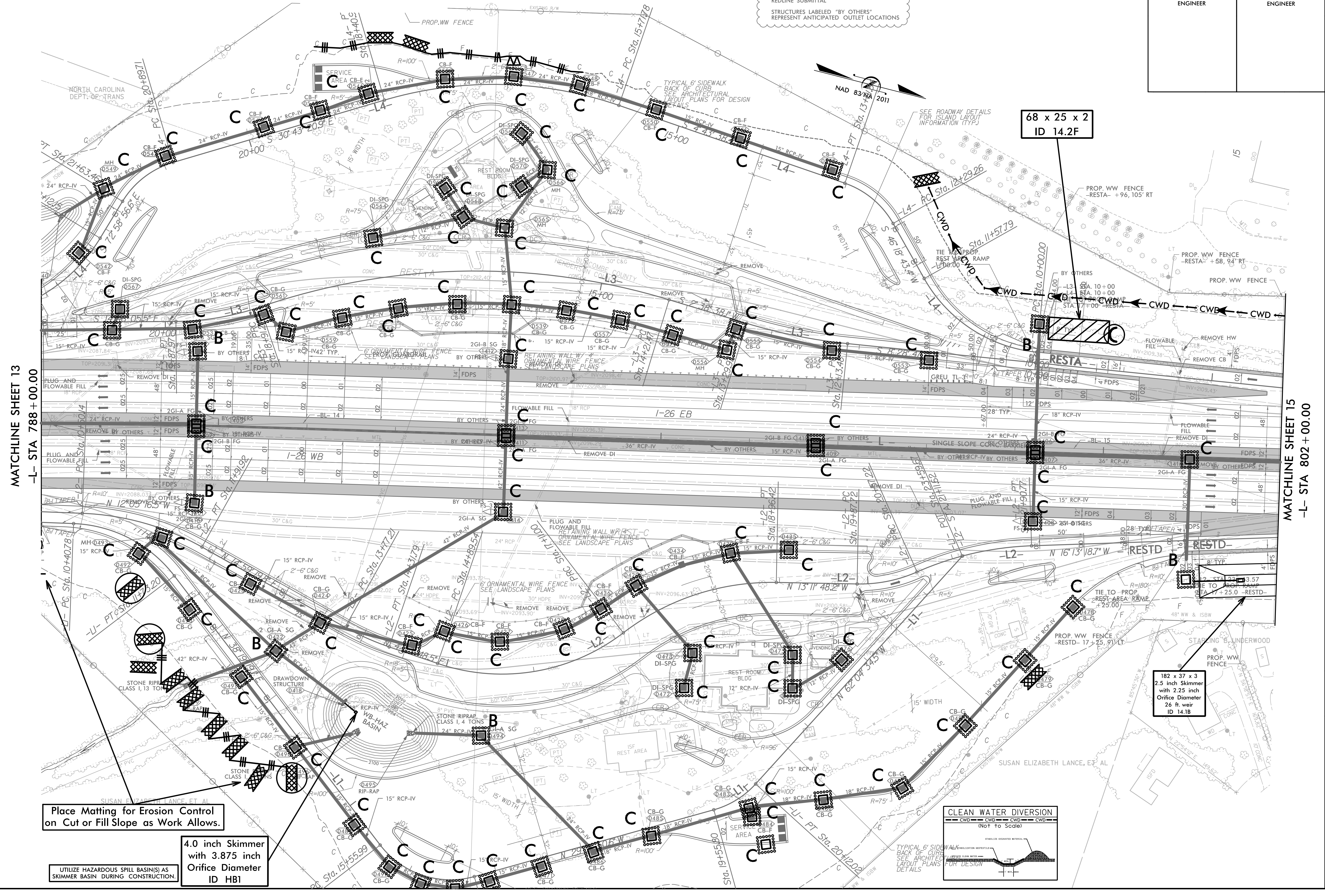
7/19/2017

CITY OF ASHEVILLE

HNTB HNTB NORTH CAROLINA, P.C.
343 E. Six Forks Road, Suite 200
Raleigh, North Carolina 27609
NC License No: C-1554

PROJECT REFERENCE NO.	SHEET NO.
I-4400C	EC-33/CONST.14
RW SHEET NO.	
ROADWAY DESIGN ENGINEER	HYDRAULICS ENGINEER

REST AREA DRAINAGE DESIGN TO BE COMPLETED BY OTHERS PRIOR TO FINAL REDLINE SUBMITTAL
STRUCTURES LABELED "BY OTHERS" REPRESENT ANTICIPATED OUTLET LOCATIONS



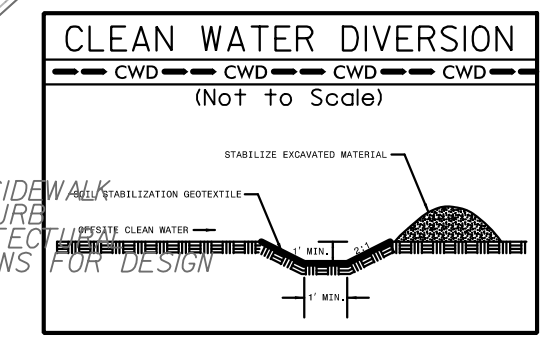
68 x 25 x 2
ID 14.2F

182 x 37 x 3
2.5 inch Skimmer
with 2.25 inch
Orifice Diameter
26 ft. weir
ID 14.1B

Place Matting for Erosion Control
on Cut or Fill Slope as Work Allows.

4.0 inch Skimmer
with 3.875 inch
Orifice Diameter
ID HB1

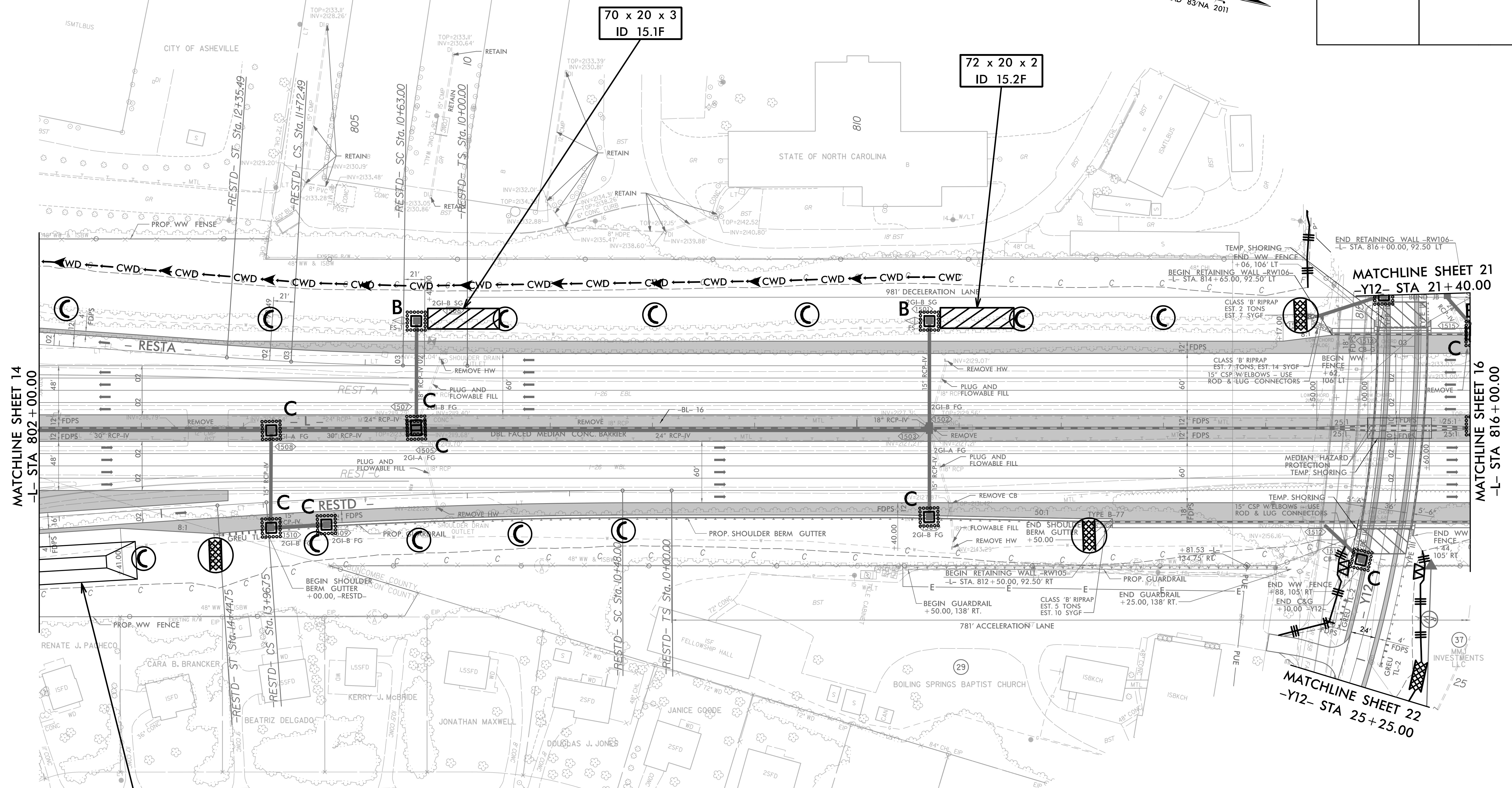
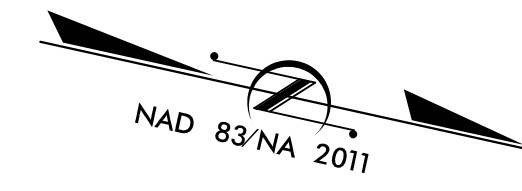
UTILIZE HAZARDOUS SPILL BASIN(S) AS
SKIMMER BASIN DURING CONSTRUCTION.



9/3/2019
design\14400C_HYD_EC_PSH14.dgn
HNTB

7/19/2017

PROJECT REFERENCE NO.	SHEET NO.
1-4400C	EC-34/CONST15
RW SHEET NO.	
ROADWAY DESIGN ENGINEER	HYDRAULICS ENGINEER

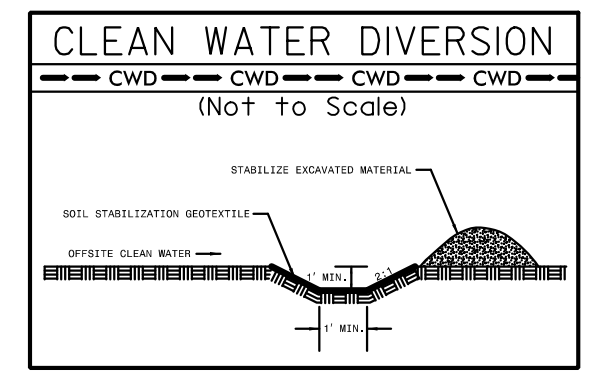


MATCHLINE SHEET 14
 -L- STA 802 + 00.00

MATCHLINE SHEET 16
 -L- STA 816 + 00.00

MATCHLINE SHEET 22
 -Y12- STA 25 + 25.00

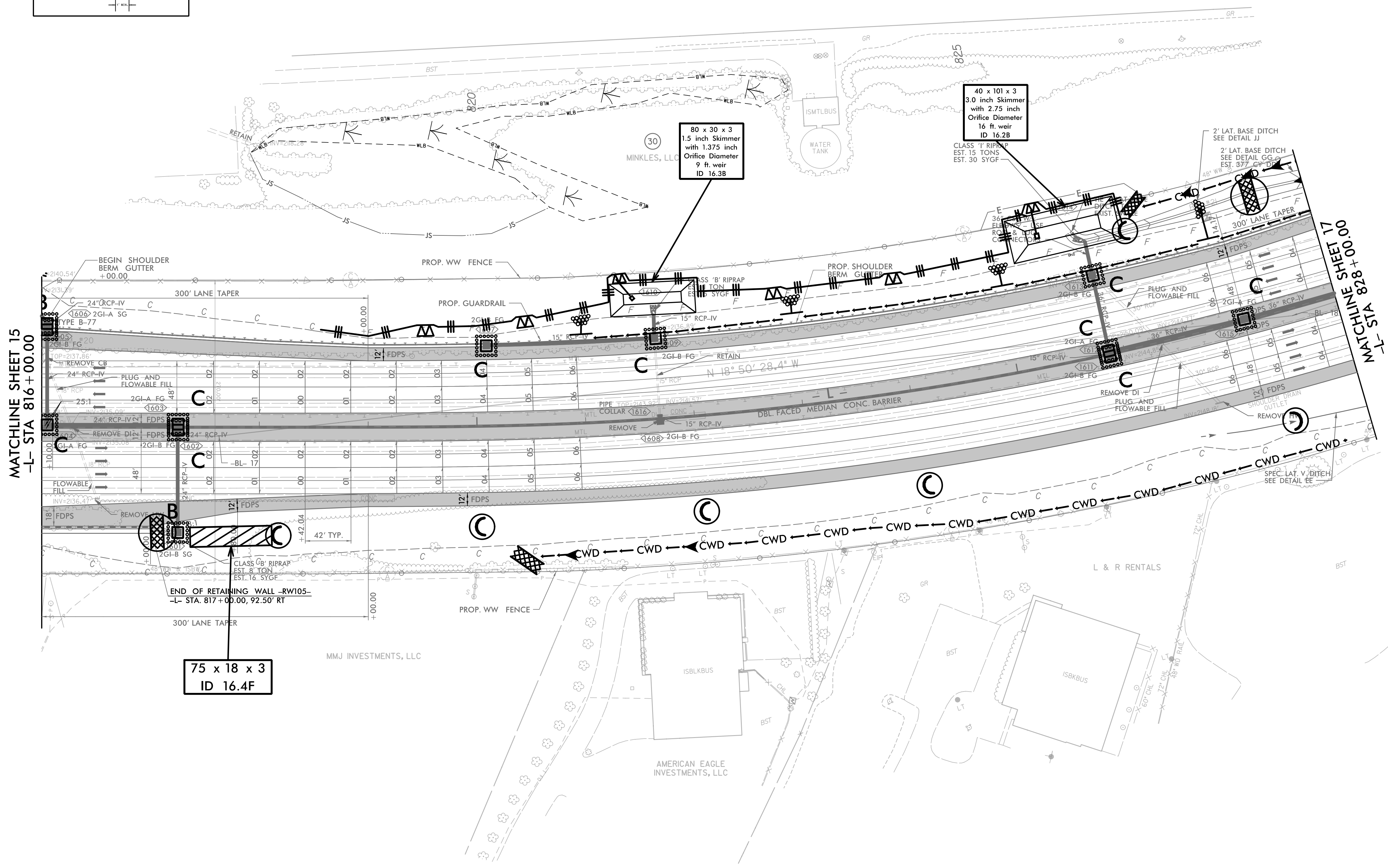
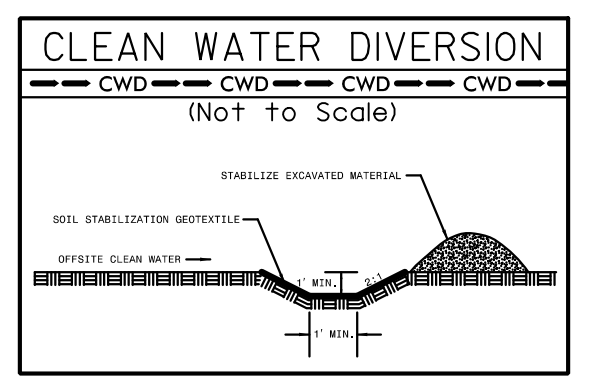
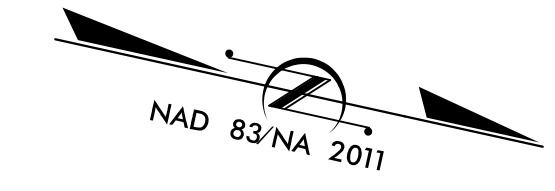
182 x 37 x 3
 2.5 inch Skimmer
 with 2.25 inch
 Orifice Diameter
 26 ft. weir
 ID 14.1B



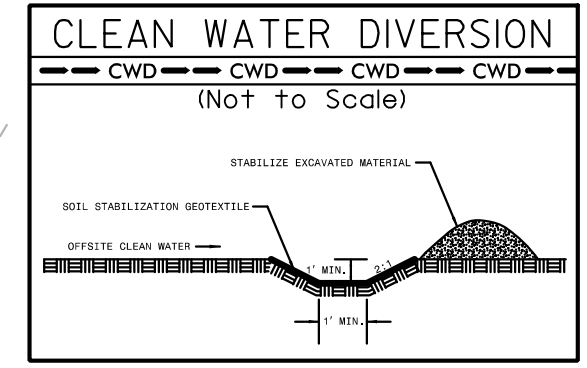
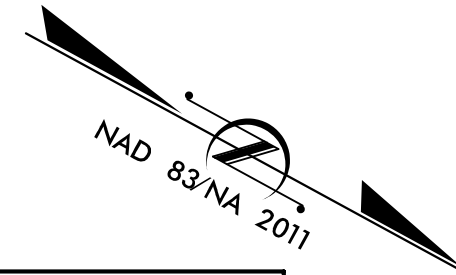
NOTE:
 TEMPORARY SHORING SHOWN FOR
 INFORMATION ONLY. FOR MORE
 INFORMATION SEE TMP SHEETS.

3/29/2018
 14400C.HYD_EC_PSH15.dgn
 HNTB

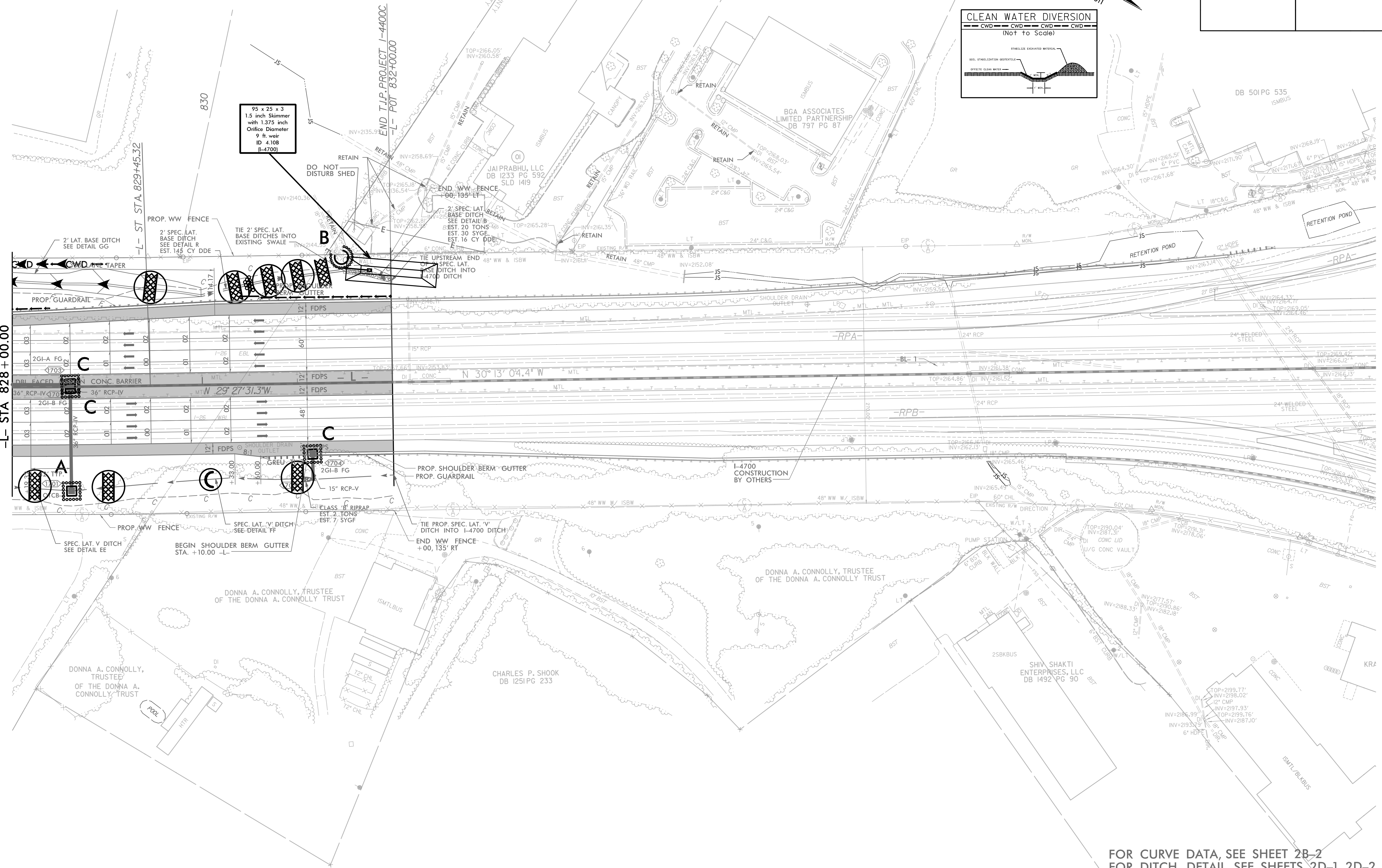
PROJECT REFERENCE NO.	SHEET NO.
1-4400C	EC-35/CONST.16
RW SHEET NO.	
ROADWAY DESIGN ENGINEER	HYDRAULICS ENGINEER



PROJECT REFERENCE NO.	SHEET NO.
I-4400C	EC-36/CONST.17
RW SHEET NO.	
ROADWAY DESIGN ENGINEER	HYDRAULICS ENGINEER



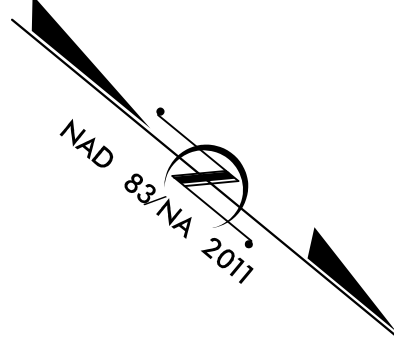
MATCHLINE SHEET 16
 -L- STA 828 +00.00



95 x 25 x 3
 1.5 inch Skimmer
 with 1.375 inch
 Orifice Diameter
 9 ft. weir
 ID 4.108
 (I-4700)

FOR CURVE DATA, SEE SHEET 2B-2
 FOR DITCH DETAIL, SEE SHEETS 2D-1, 2D-2
 FOR -L- PROFILE, SEE SHEET 35

PROJECT REFERENCE NO.	SHEET NO.
1-4400C	EC-37/CONST.JB
RW SHEET NO.	
ROADWAY DESIGN ENGINEER	HYDRAULICS ENGINEER



ID	TYPE
1802	CB - E
1803	JB W/MH
1805	2GI-A SG
1806	CB - G
1810	BLIND JB
1813	CB - G
1812	TB JB W/MH
1816	TB JB W/MH
1817	CB - G
1819	CB - G
1818	2GI-B SG
1825	CB - G
1828	CB - G
1827	TBDI

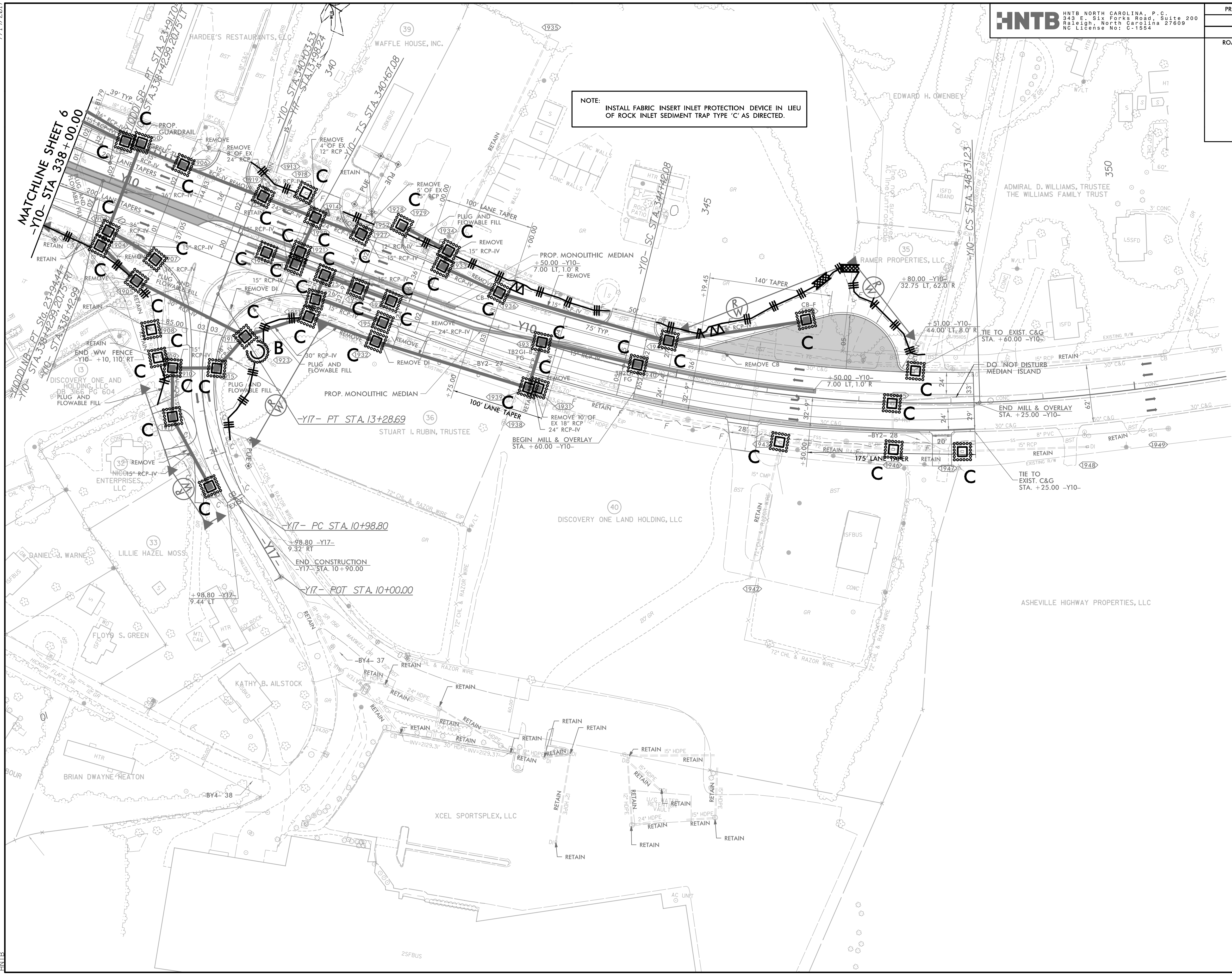
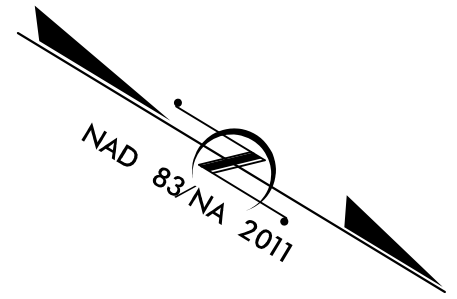


MATCHLINE SHEET 5
-Y10- STA 324+00.00

7/19/2017

PROJECT REFERENCE NO.	SHEET NO.
1-4400C	EC-38/CONST.19
RW SHEET NO.	
ROADWAY DESIGN ENGINEER	HYDRAULICS ENGINEER

NOTE: INSTALL FABRIC INSERT INLET PROTECTION DEVICE IN LIEU OF ROCK INLET SEDIMENT TRAP TYPE 'C' AS DIRECTED.

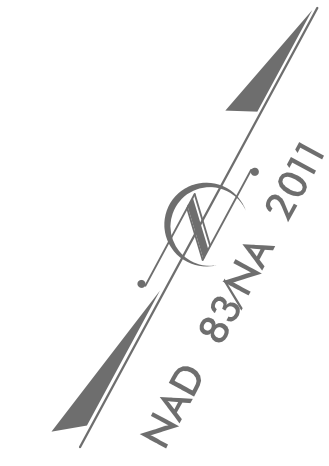


3/29/2019
 3:29:20 PM
 C:\Users\hntb\OneDrive\Documents\1-4400C-HYD-EC-PSH19.dgn
 HNTB

8/22/2017

HNTB HNTB NORTH CAROLINA, P.C.
343 E. Six Forks Road, Suite 200
Raleigh, North Carolina 27609
NC License No: C-1554

PROJECT REFERENCE NO.	SHEET NO.
1-4400C	EC-39/CONST.20
RW SHEET NO.	
ROADWAY DESIGN ENGINEER	HYDRAULICS ENGINEER



MATCHLINE SHEET 8
-Y11- STA 19+50.00

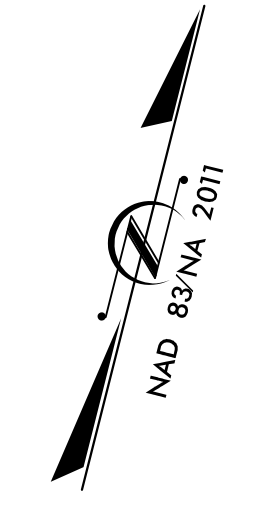


3/29/2019, 14:40:00, HYD_EC_PSH20.dgn
HNTB

8/22/2017

HNTB HNTB NORTH CAROLINA, P.C.
343 E. Six Forks Road, Suite 200
Raleigh, North Carolina 27609
NC License No: C-1554

PROJECT REFERENCE NO.	SHEET NO.
1-4400C	EC-40/CONST.21
RW SHEET NO.	
ROADWAY DESIGN ENGINEER	HYDRAULICS ENGINEER



MATCHLINE SHEET 15
 -Y12- STA 21 + 40.00

STATE OF NORTH CAROLINA

Place Matting for Erosion Control
on Slope as Work Allows.
-Y12- Sta. 18 + 00 to Sta. 20 + 00 LT

NOTE:
TEMPORARY SHORING SHOWN FOR
INFORMATION ONLY. FOR MORE
INFORMATION SEE TMP SHEETS.

3/29/2018
 3:\Projects\14400C-HYD-EC-PSH21.dgn
 HNTB

8/22/2017

PROJECT REFERENCE NO.	SHEET NO.
1-4400C	EC-41/CONST22
RW SHEET NO.	
ROADWAY DESIGN ENGINEER	HYDRAULICS ENGINEER

