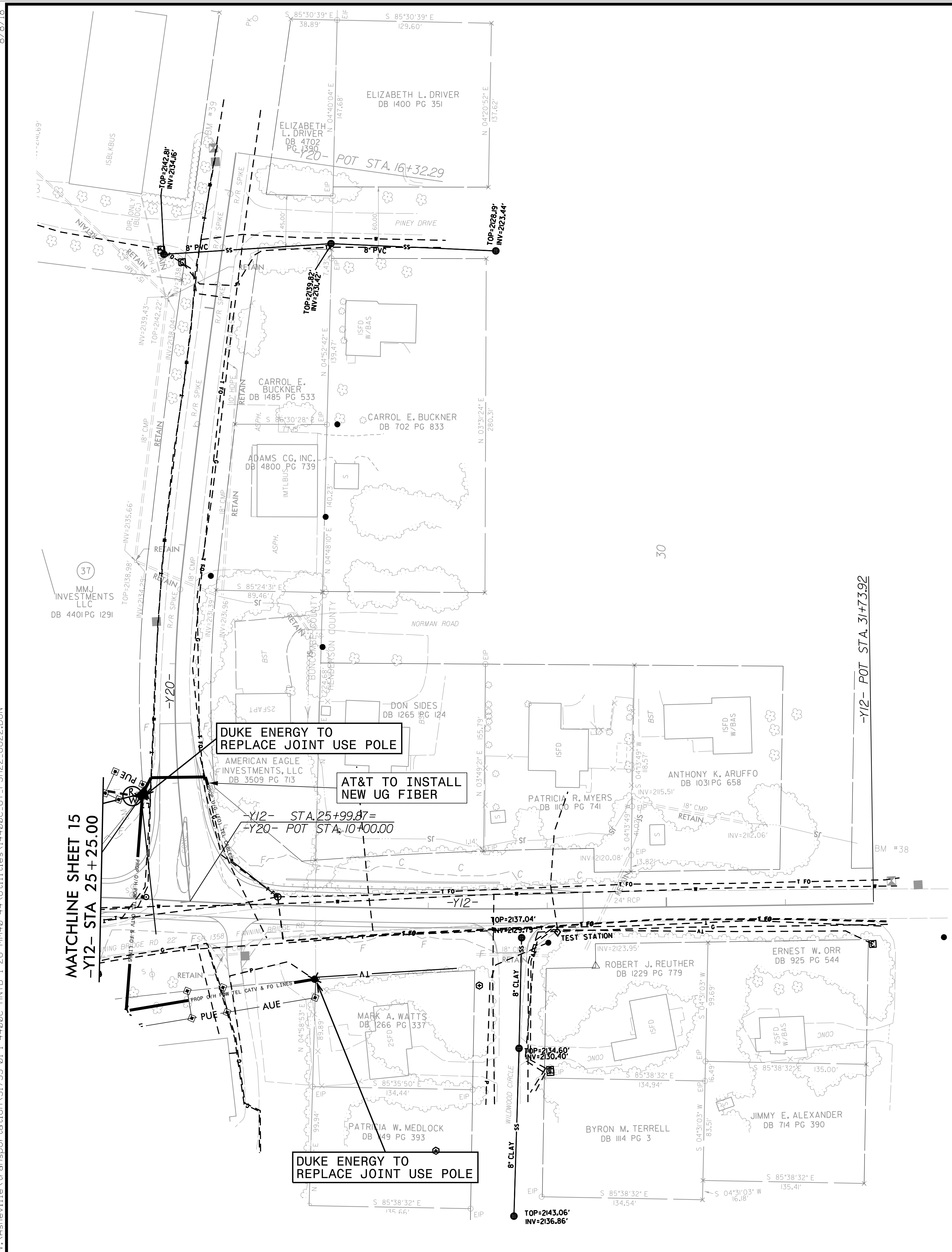


PROJECT REFERENCE NO.	SHEET NO.
I-4400C	U0-12
THIS SHEET CORRESPONDS TO RDY-22	

UTILITIES BY OTHERS

ALL PROPOSED UTILITY WORK SHOWN ON THIS SHEET WILL BE DONE BY OTHERS. NO PAYMENT WILL BE MADE TO THE CONTRACTOR FOR PROPOSED UTILITY WORK SHOWN ON THIS SHEET.



MATCHLINE SHEET 15
-Y12- STA 25 + 25.00

-Y12- POT STA. 31+73.92

DUKE ENERGY TO REPLACE JOINT USE POLE

AT&T TO INSTALL NEW UG FIBER

-Y12- STA. 25+99.87=
-Y20- POT STA. 10+00.00

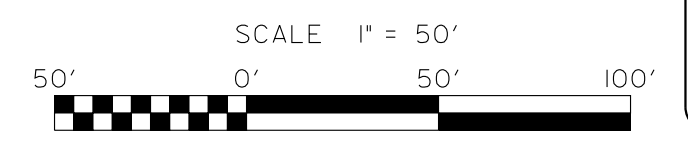
DUKE ENERGY TO REPLACE JOINT USE POLE

V&M
Vaughn & Melton
Consulting Engineers

Asheville, North Carolina 828-253-2196

Charlotte, North Carolina 704-351-0488	Tri-Cities, Tennessee 423-487-8900	Knoxville, Tennessee 865-546-9800	Middlesboro, Kentucky 606-248-6600	Spartanburg, South Carolina 803-534-4775
--	------------------------------------	-----------------------------------	------------------------------------	--

Copyright © 2006 Vaughn & Melton, Inc. All Rights Reserved.



8/78/18
I:\Asheville\transportation\31733-01\I-4400C\HNTB\I-26\MM40-44\Utilities\I4400C_UT_PSH22_U022.DGN