

**This electronic collection of documents is provided  
for the convenience of the user  
and is Not a Certified Document –**

**The documents contained herein were originally issued  
and sealed by the individuals whose names and license  
numbers appear on each page, on the dates appearing  
with their signature on that page.**

**This file or an individual page  
shall not be considered a certified document.**

09/13/18

**TIP PROJECT: I-4400BB**

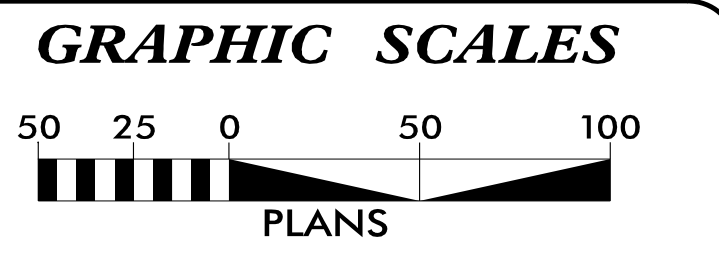
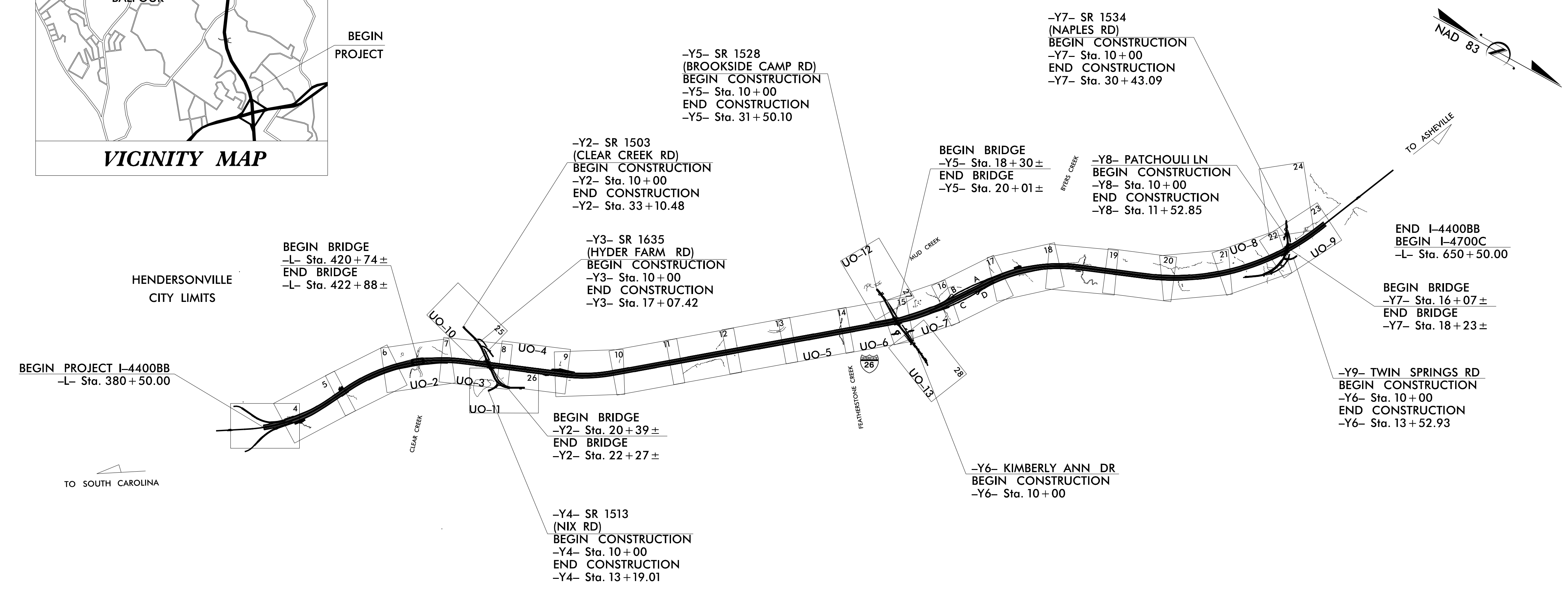
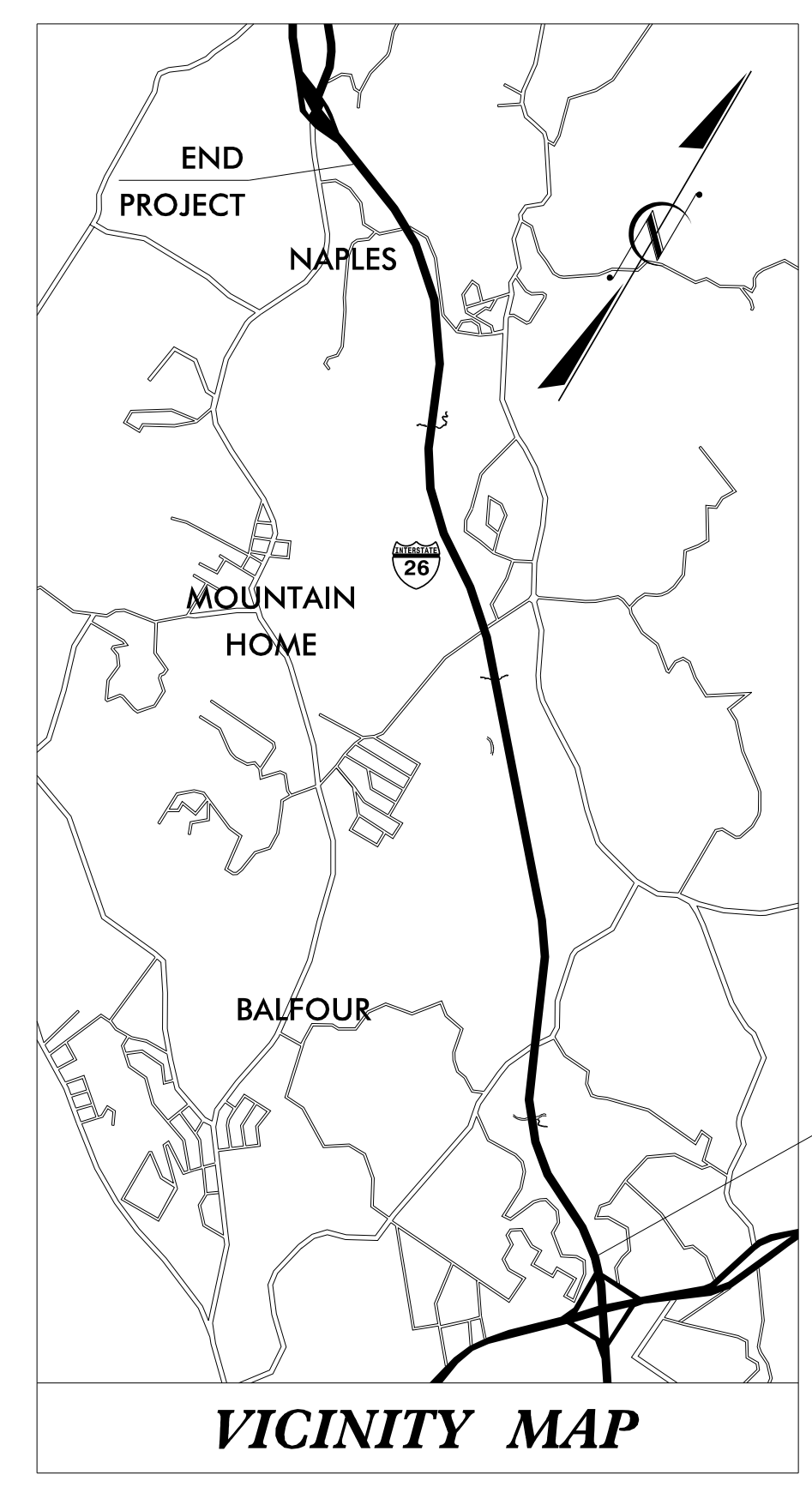
T.I.P. NO.	SHEET NO.
I-4400BB	UO-1

**NOTE:**  
 ALL UTILITY WORK SHOWN ON THIS SHEET WILL BE DONE BY OTHERS. NO PAYMENT WILL BE MADE TO THE CONTRACTOR FOR UTILITY WORK SHOWN ON THIS SHEET.

STATE OF NORTH CAROLINA  
 DIVISION OF HIGHWAYS

**UTILITIES BY OTHERS PLANS  
 HENDERSON COUNTY**

**LOCATION: I-26 FROM 0.05MI NORTH OF US 64 TO 0.5MI SOUTH OF US 25 (ASHEVILLE HIGHWAY)**  
**TYPE OF WORK: RELOCATION OF POWER AND COMMUNICATION LINES**



**INDEX OF SHEETS**

SHEET NO.:	DESCRIPTION:
UO-1	TITLE SHEET
UO-2 THRU UO-3	UBO SYMBOLOGY SHEETS
UO-4 THRU UO-28	UBO PLAN SHEETS

**UTILITY OWNERS WITH CONFLICTS**

(A) POWER DISTRIBUTION - DUKE ENERGY  
 (B) COMMUNICATIONS - MORRIS BROADBAND  
 (C) COMMUNICATIONS - AT&T

PREPARED IN THE OFFICE OF:

**V&M**  
**Vaughn & Melton**  
 Consulting Engineers  
 Asheville, North Carolina 828.253.2796

**REECE M. SCHULER, P.E.** UTILITY PROJECT MANAGER  
**LYNN MANN, P.E.** PROJECT UTILITY COORDINATOR  
**SHANE R. WAIDNER** PROJECT UTILITY DESIGNER

**HIGHWAY DIVISION 14**

253 WEBSTER ROAD  
 SILVA, NC 28779  
 PHONE (828) 542-1964  
 FAX (828) 586-4043

**Byron Sanders, P.E.** UTILITIES REGIONAL ENGINEER  
**Robert Golding** DIVISION UTILITIES ENGINEER  
**Bill Green** DIVISION UTILITIES COORDINATOR

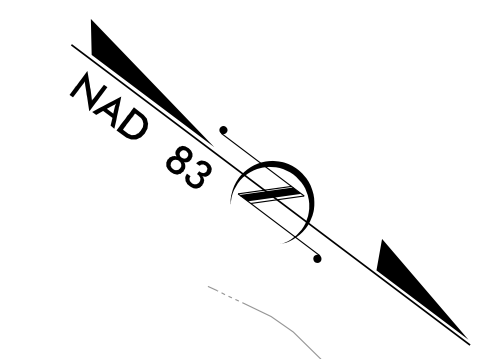
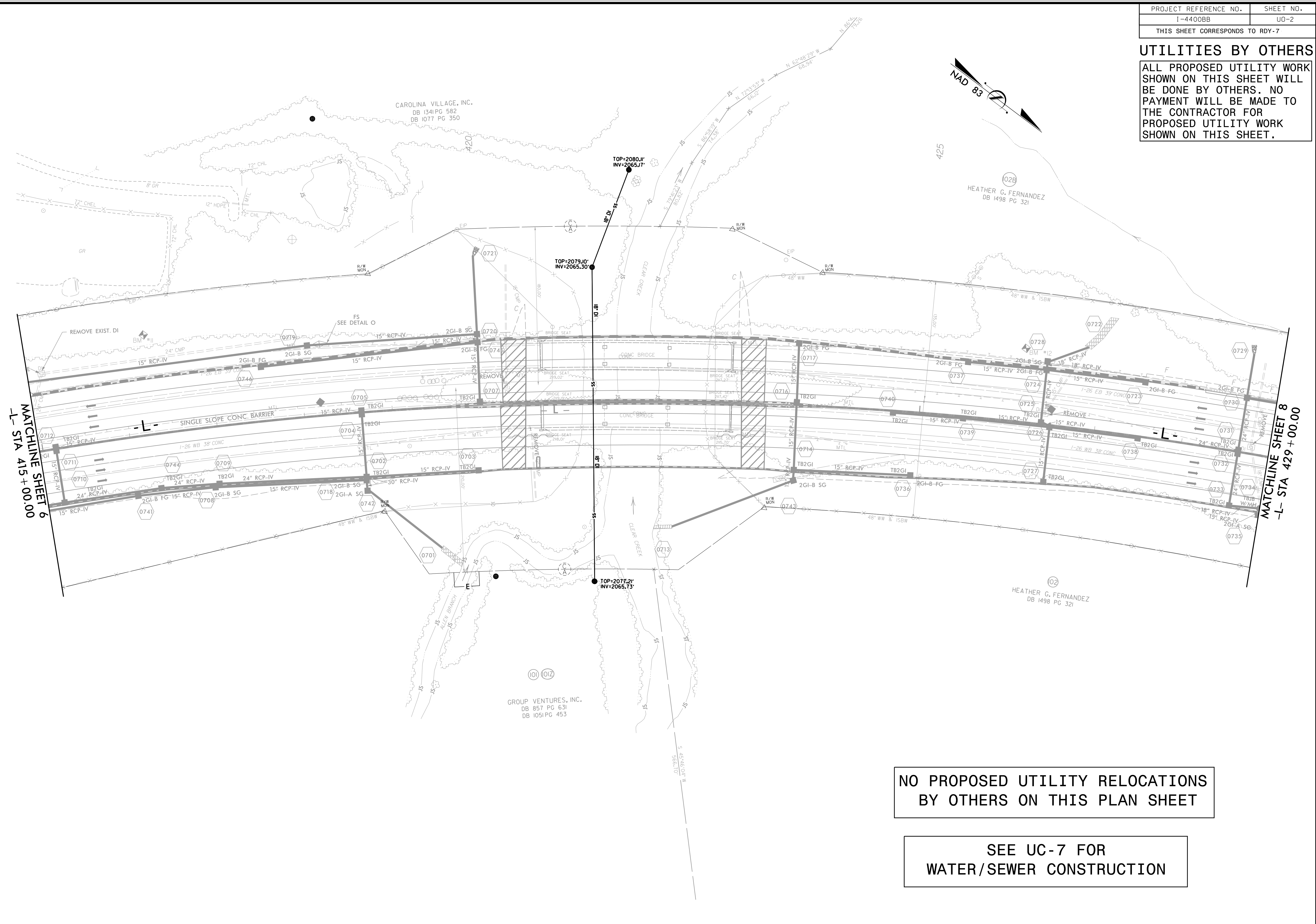
V:\ASHEVILLE\TRANSPORTATION\31733-02\UTILITIES\I4400BB\_UT\_UO-1.DGN

PROJECT REFERENCE NO.	SHEET NO.
I-4400BB	UO-2
THIS SHEET CORRESPONDS TO RDY-7	

**UTILITIES BY OTHERS**

ALL PROPOSED UTILITY WORK SHOWN ON THIS SHEET WILL BE DONE BY OTHERS. NO PAYMENT WILL BE MADE TO THE CONTRACTOR FOR PROPOSED UTILITY WORK SHOWN ON THIS SHEET.

TRANSPORTATION:31733-02 I-4400BB UTILITIES-I-4400BB-UT-110-D-7.DGN 9/13/18



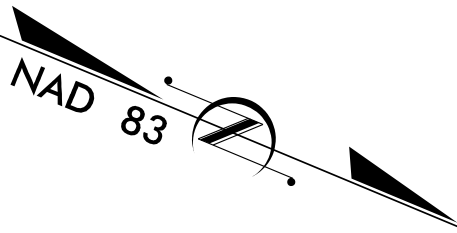
**NO PROPOSED UTILITY RELOCATIONS  
BY OTHERS ON THIS PLAN SHEET**

**SEE UC-7 FOR  
WATER/SEWER CONSTRUCTION**

PROJECT REFERENCE NO.	SHEET NO.
I-4400BB	UO-3
THIS SHEET CORRESPONDS TO RDY-8	

**UTILITIES BY OTHERS**

ALL PROPOSED UTILITY WORK SHOWN ON THIS SHEET WILL BE DONE BY OTHERS. NO PAYMENT WILL BE MADE TO THE CONTRACTOR FOR PROPOSED UTILITY WORK SHOWN ON THIS SHEET.



DUKE ENERGY TO INSTALL NEW JOINT USE POLE

AT&T TO ABANDON UG TELECOM LINES

AT&T TO ABANDON UG TELECOM LINES

DUKE ENERGY TO INSTALL NEW JOINT USE POLE

SEE UC-8, 8A FOR WATER/SEWER CONSTRUCTION

MATCHLINE SHEET 25  
-Y3- STA 14+00.00

MATCHLINE SHEET 25  
-Y2- STA 16+00.00

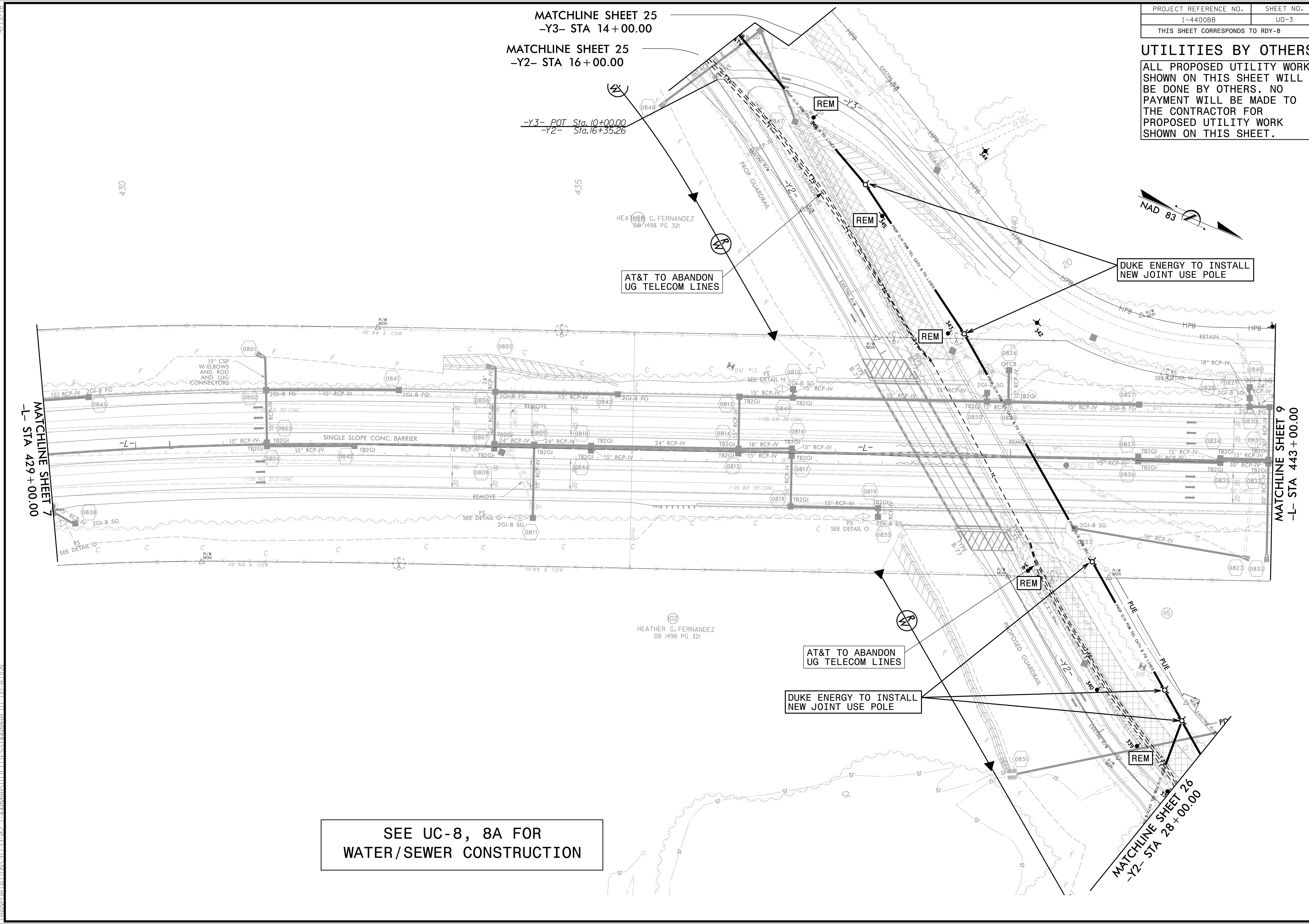
-Y3- POT Sta. 10+00.00  
-Y2- Sta. 16+35.26

MATCHLINE SHEET 7  
-L- STA 429+00.00

MATCHLINE SHEET 9  
-L- STA 443+00.00

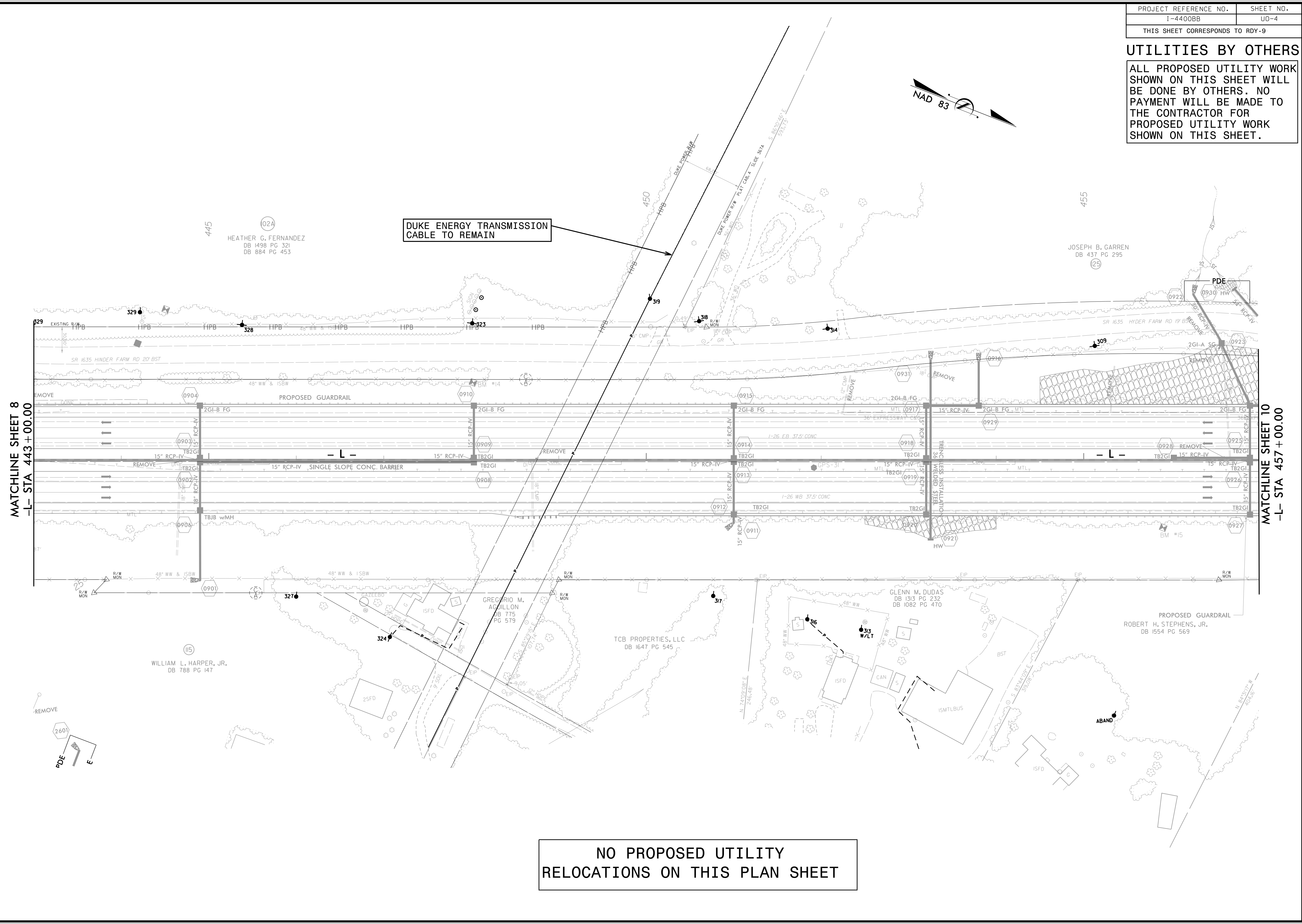
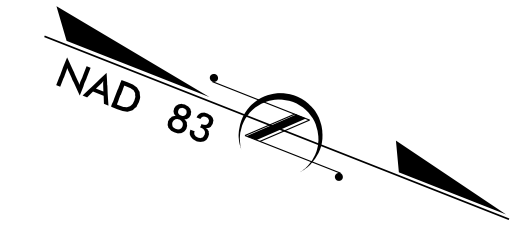
MATCHLINE SHEET 26  
-Y2- STA 28+00.00

TRANSPORTATION 317233-02 I-4400BB UTILITIES 14400BB.U11.UO-3.DGN



### UTILITIES BY OTHERS

ALL PROPOSED UTILITY WORK SHOWN ON THIS SHEET WILL BE DONE BY OTHERS. NO PAYMENT WILL BE MADE TO THE CONTRACTOR FOR PROPOSED UTILITY WORK SHOWN ON THIS SHEET.



MATCHLINE SHEET 8  
-L- STA 443 + 00.00

MATCHLINE SHEET 10  
-L- STA 457 + 00.00

DUKE ENERGY TRANSMISSION  
CABLE TO REMAIN

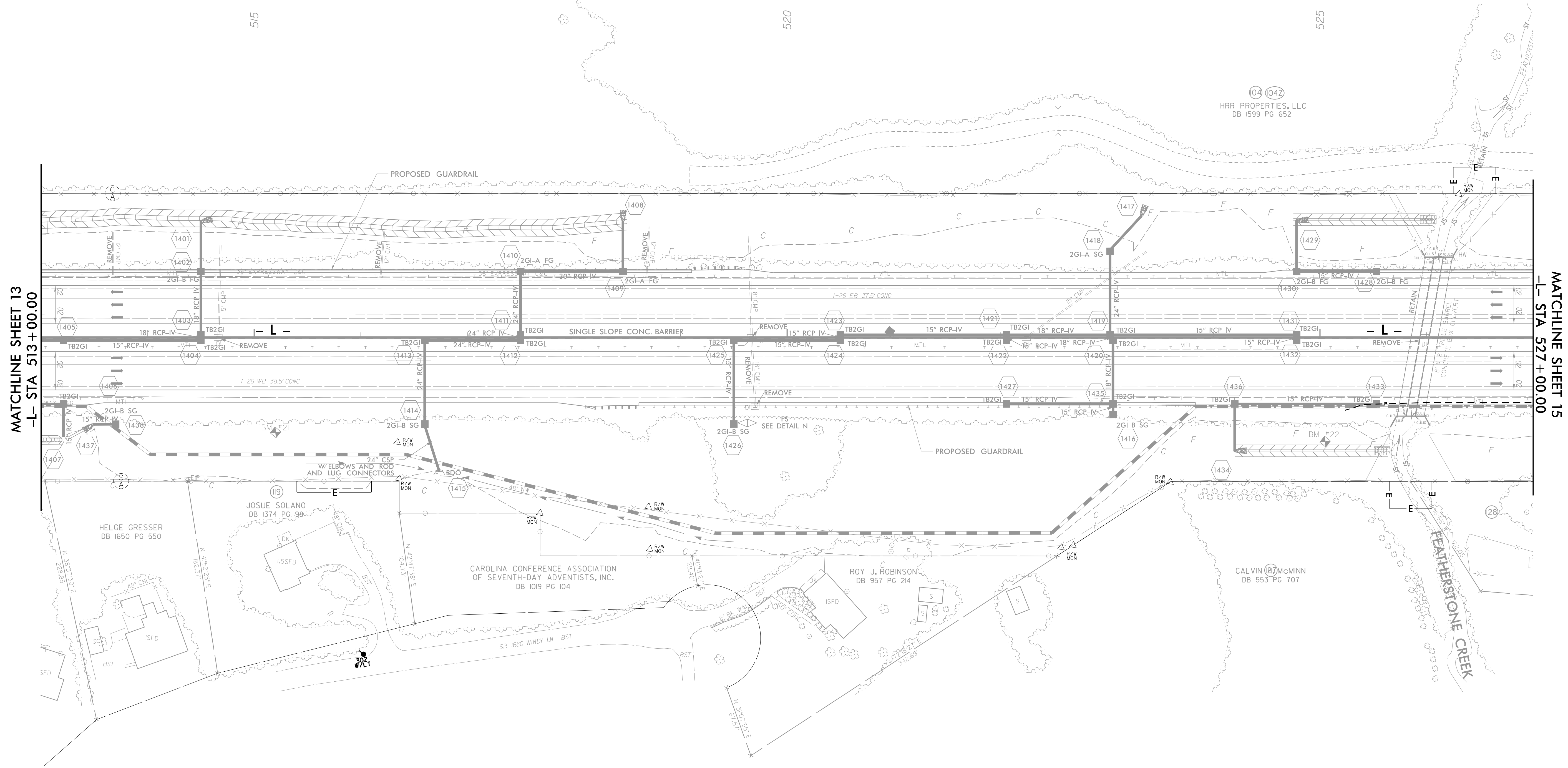
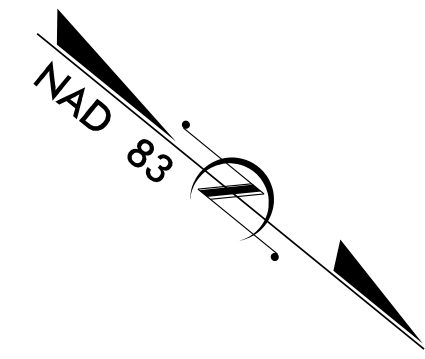
NO PROPOSED UTILITY  
RELOCATIONS ON THIS PLAN SHEET

TRANSPORTATION 317233-02 I-4400BB UTILITIES 14400BB UT UD-9.DGN 9/13/18

PROJECT REFERENCE NO.	SHEET NO.
I-4400BB	U0-5
THIS SHEET CORRESPONDS TO RDY-14	

**UTILITIES BY OTHERS**

ALL PROPOSED UTILITY WORK SHOWN ON THIS SHEET WILL BE DONE BY OTHERS. NO PAYMENT WILL BE MADE TO THE CONTRACTOR FOR PROPOSED UTILITY WORK SHOWN ON THIS SHEET.



MATCHLINE SHEET 13  
-L- STA 513 + 00.00

MATCHLINE SHEET 15  
-L- STA 527 + 00.00

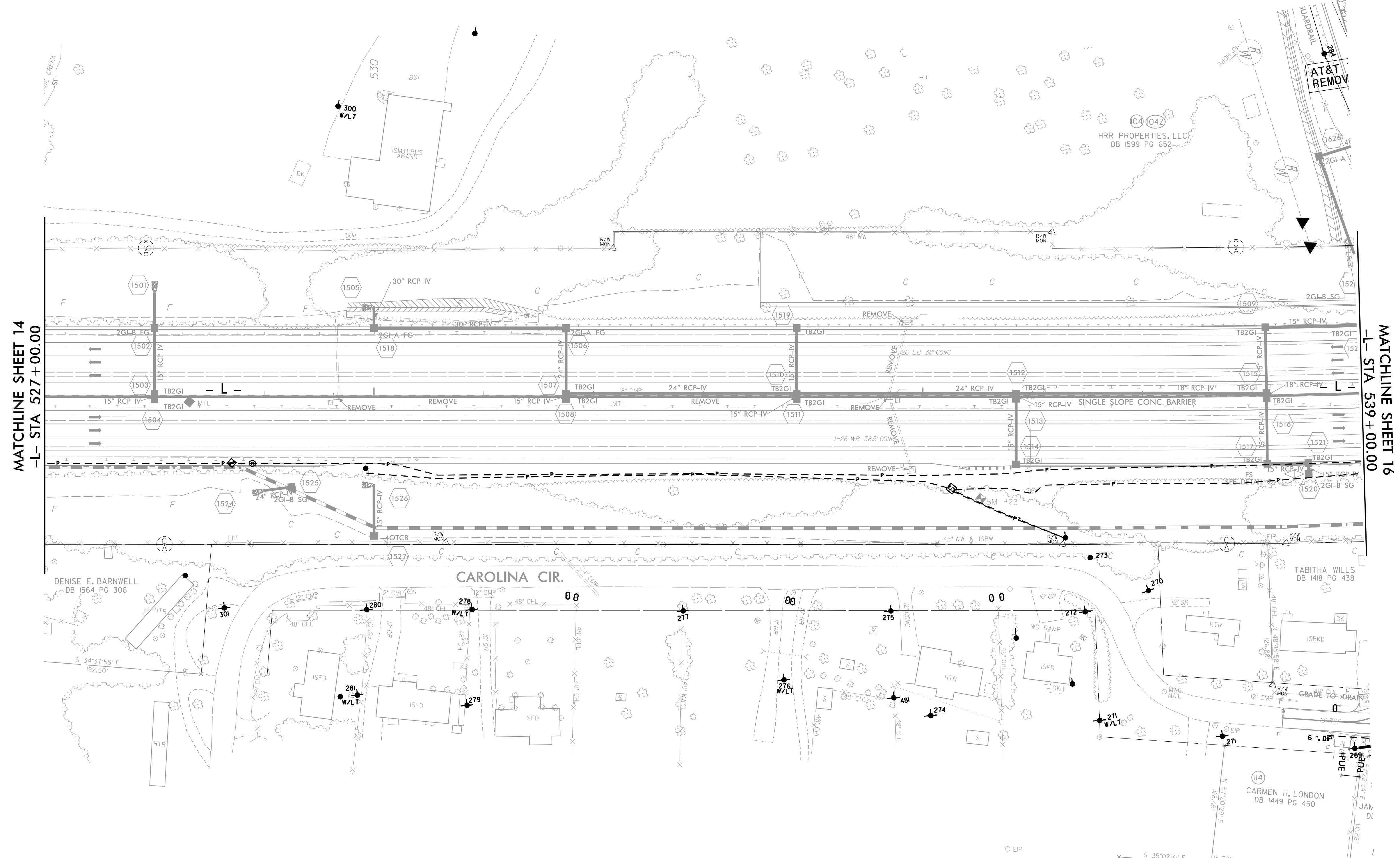
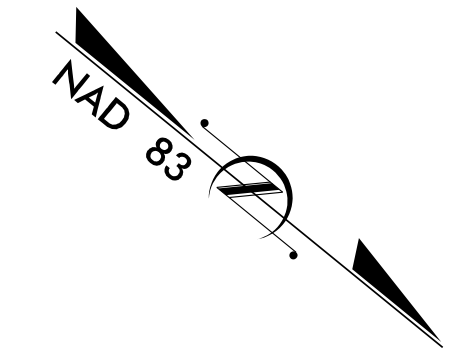
NO PROPOSED UTILITY RELOCATIONS ON THIS PLAN SHEET

UG POWER IS ASSOCIATED WITH INTERSTATE LIGHTING. PLEASE SEE LIGHTING PLANS FOR FURTHER INFORMATION

TRANSPORTATION\31733-02\_I-4400BB\UTILITIES\14400BB\_UT\_U0-14.DGN 9/13/18

**UTILITIES BY OTHERS**

ALL PROPOSED UTILITY WORK SHOWN ON THIS SHEET WILL BE DONE BY OTHERS. NO PAYMENT WILL BE MADE TO THE CONTRACTOR FOR PROPOSED UTILITY WORK SHOWN ON THIS SHEET.



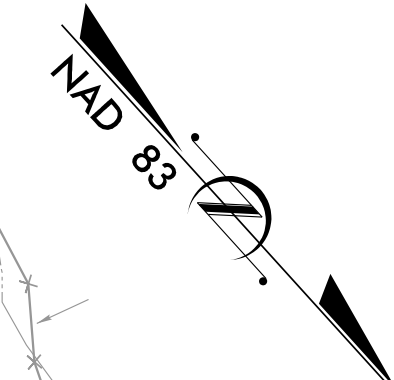
**NO PROPOSED UTILITY RELOCATIONS ON THIS PLAN SHEET**

**UG POWER IS ASSOCIATED WITH INTERSTATE LIGHTING. PLEASE SEE LIGHTING PLANS FOR FURTHER INFORMATION**

TRANSPORTATION 31733-02 I-4400BB UTILITIES 14400BB-UT-UD-15.DGN 9/13/18

### UTILITIES BY OTHERS

ALL PROPOSED UTILITY WORK SHOWN ON THIS SHEET WILL BE DONE BY OTHERS. NO PAYMENT WILL BE MADE TO THE CONTRACTOR FOR PROPOSED UTILITY WORK SHOWN ON THIS SHEET.

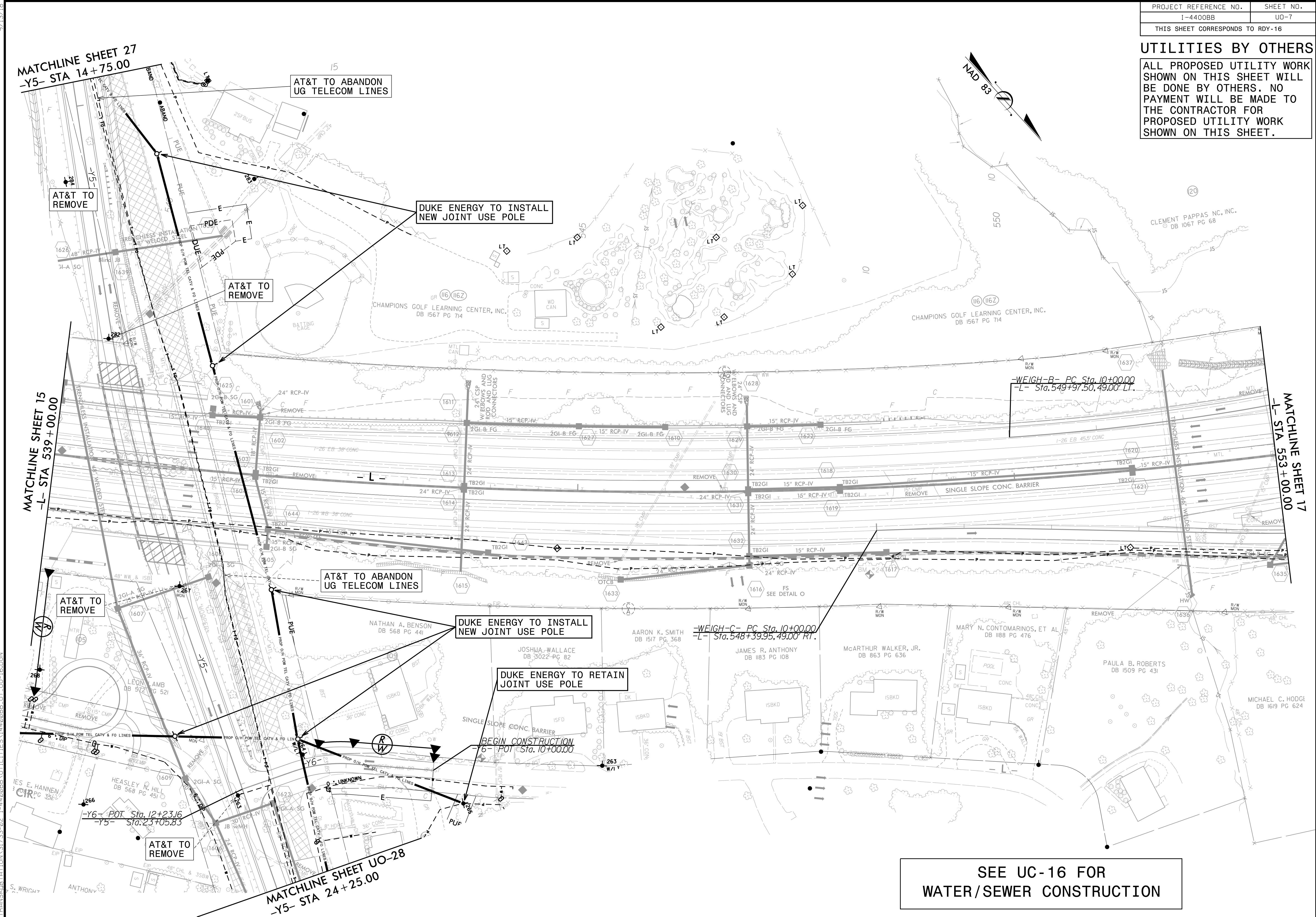


MATCHLINE SHEET 27  
-Y5- STA 14+75.00

MATCHLINE SHEET 17  
-L- STA 53+00.00

MATCHLINE SHEET 15  
-L- STA 539+00.00

MATCHLINE SHEET UO-28  
-Y5- STA 24+25.00



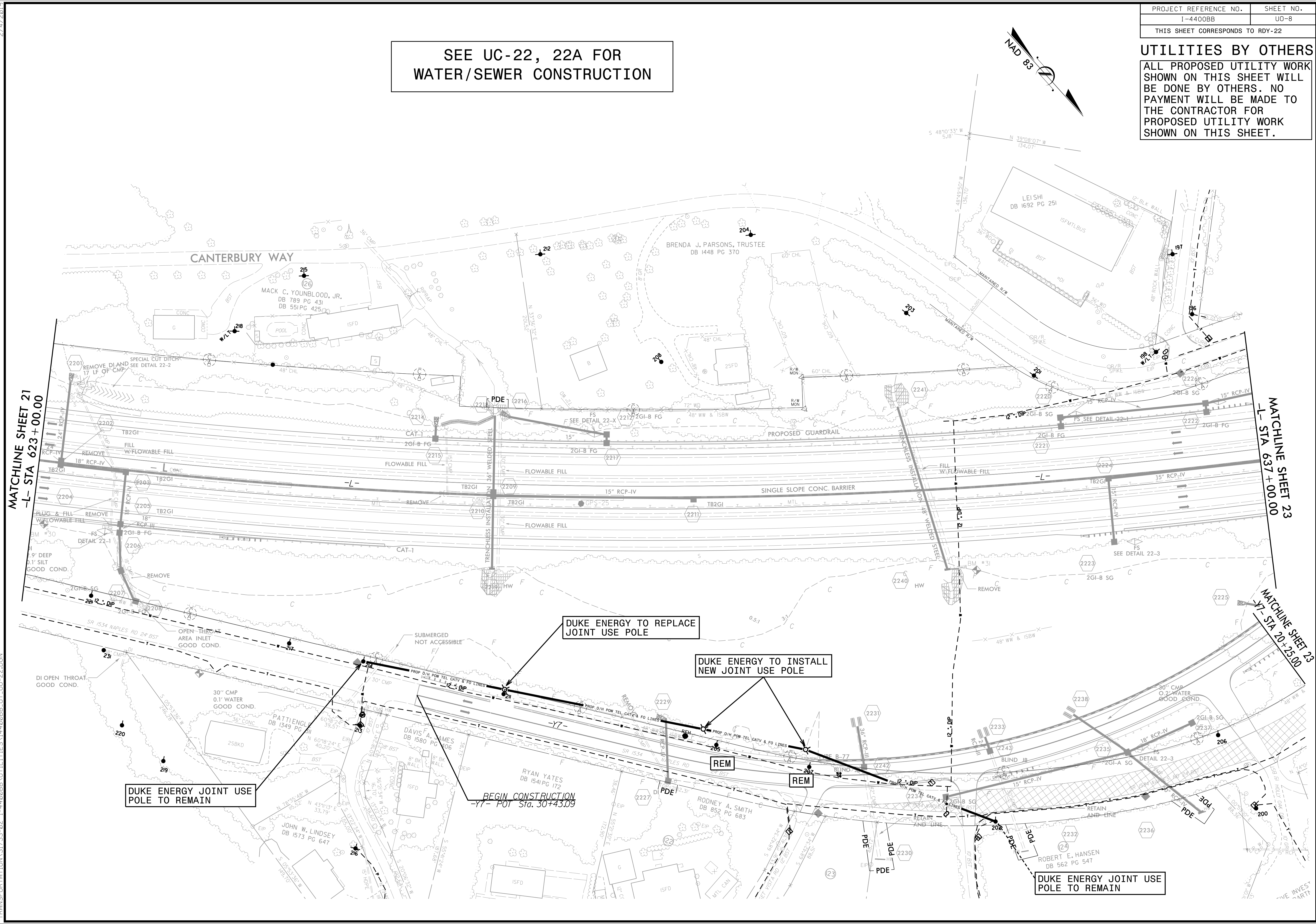
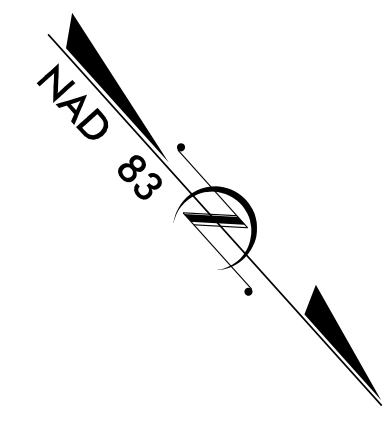
SEE UC-16 FOR WATER/SEWER CONSTRUCTION

TRANSPORTATION 31733-02 I-4400BB UTILITIES I-4400BB-UT\_UO-16.DGN 9/13/18



SEE UC-22, 22A FOR  
WATER/SEWER CONSTRUCTION

**UTILITIES BY OTHERS**  
ALL PROPOSED UTILITY WORK SHOWN ON THIS SHEET WILL BE DONE BY OTHERS. NO PAYMENT WILL BE MADE TO THE CONTRACTOR FOR PROPOSED UTILITY WORK SHOWN ON THIS SHEET.



MATCHLINE SHEET 21  
-L- STA 623+00.00

MATCHLINE SHEET 23  
-L- STA 637+00.00

MATCHLINE SHEET 23  
-Y- STA 20+25.00

DUKE ENERGY JOINT USE  
POLE TO REMAIN

DUKE ENERGY TO REPLACE  
JOINT USE POLE

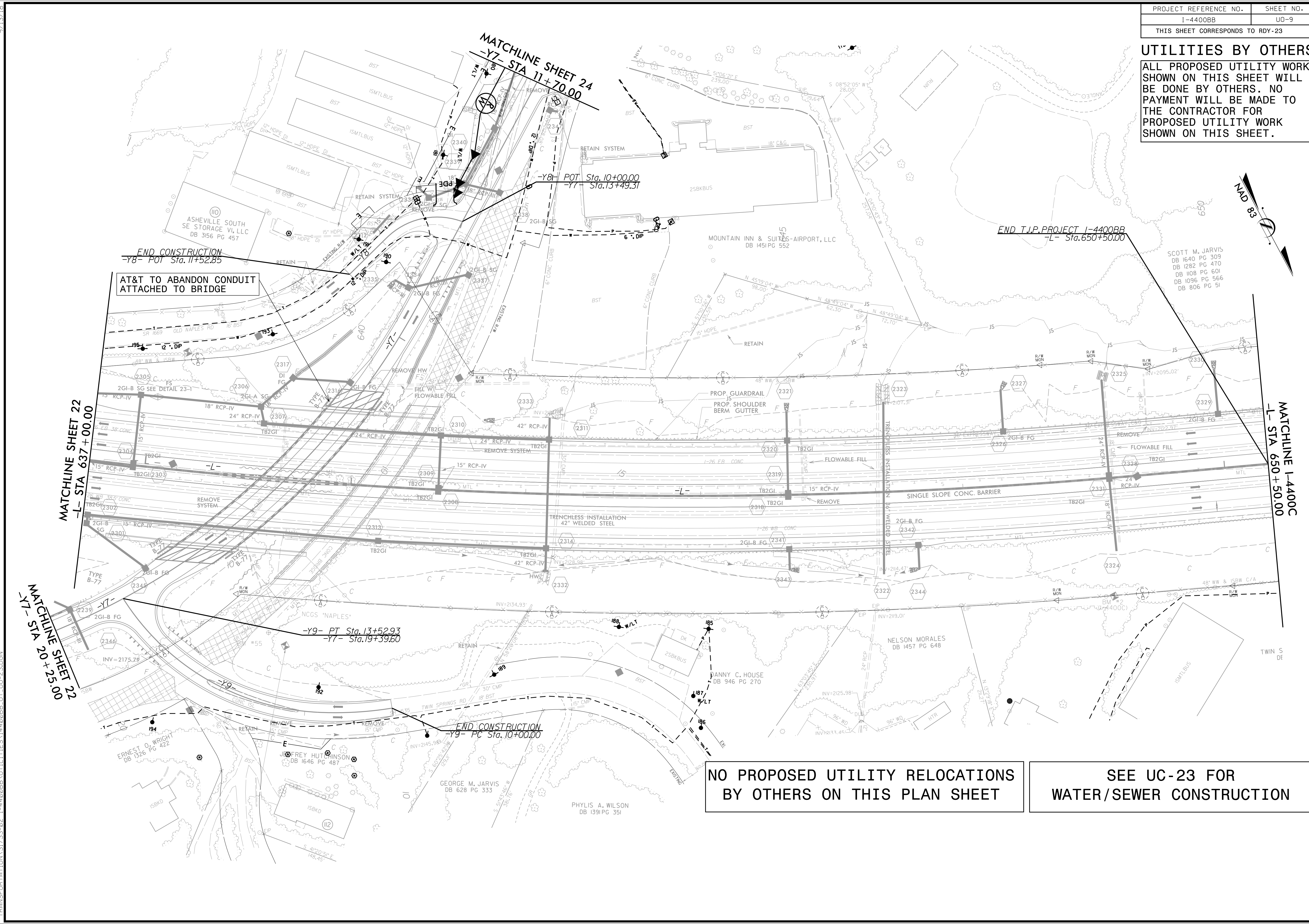
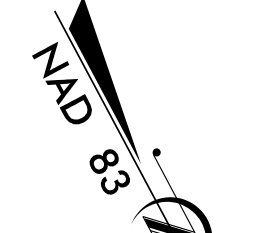
DUKE ENERGY TO INSTALL  
NEW JOINT USE POLE

DUKE ENERGY JOINT USE  
POLE TO REMAIN

BEGIN CONSTRUCTION  
-Y7- POT Sta. 30+43.09

TRANSPORTATION\31733-02\_I-4400BB\UTILITIES\14400BB-UT\_UO-22.DGN 2/4/2013

**UTILITIES BY OTHERS**  
 ALL PROPOSED UTILITY WORK SHOWN ON THIS SHEET WILL BE DONE BY OTHERS. NO PAYMENT WILL BE MADE TO THE CONTRACTOR FOR PROPOSED UTILITY WORK SHOWN ON THIS SHEET.



END CONSTRUCTION  
 -Y8- POT Sta. 11+52.85

AT&T TO ABANDON CONDUIT ATTACHED TO BRIDGE

END T.I.P. PROJECT I-4400BB  
 -L- Sta. 650+50.00

MATCHLINE SHEET 22  
 -L- STA 637+00.00

MATCHLINE SHEET 22  
 -Y7- STA 20+25.00

MATCHLINE SHEET 24  
 -Y7- STA 11+70.00

MATCHLINE I-4400C  
 -L- STA 650+50.00

-Y9- PT Sta. 13+52.93  
 -Y7- Sta. 19+39.60

END CONSTRUCTION  
 -Y9- PC Sta. 10+00.00

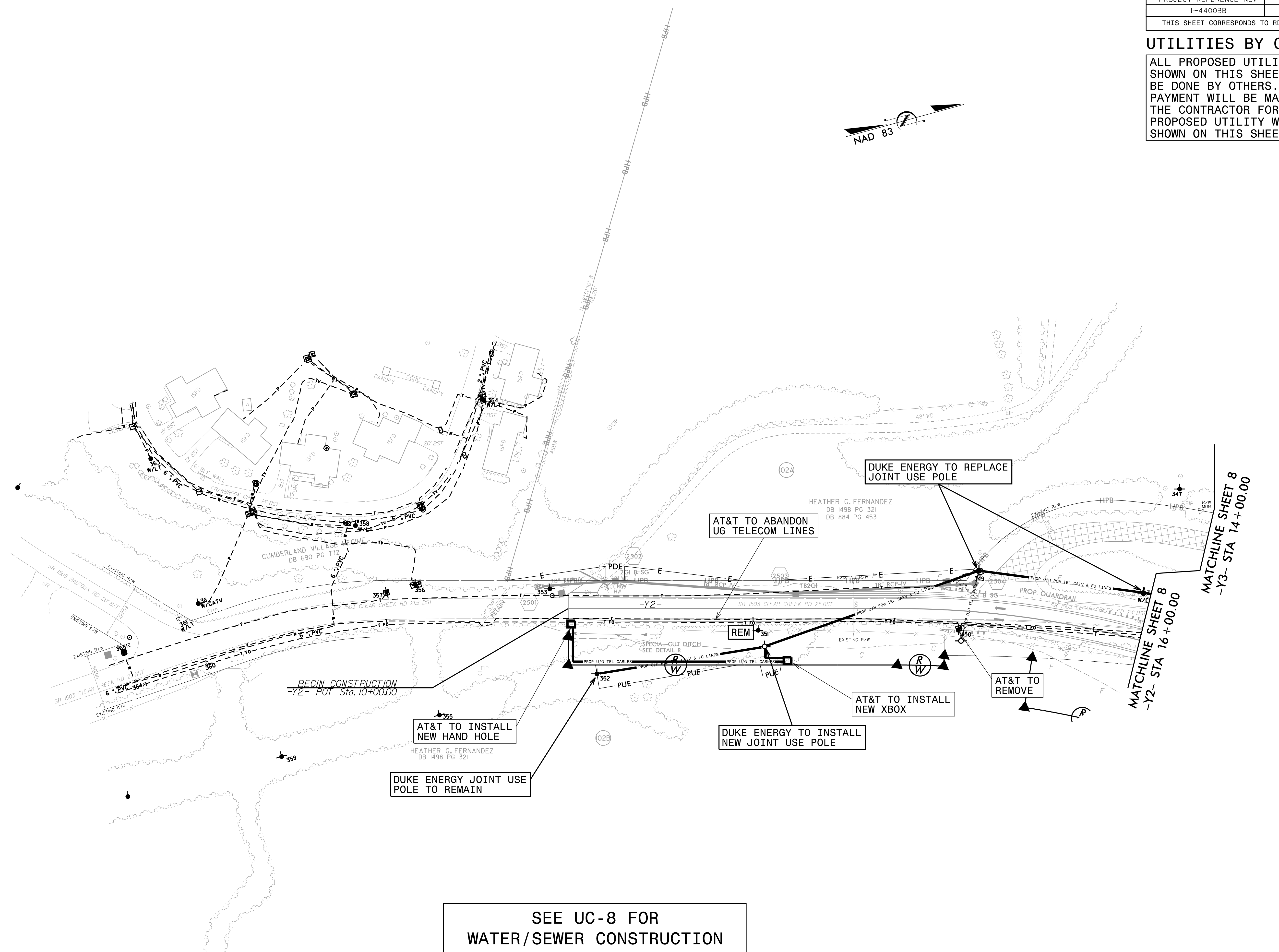
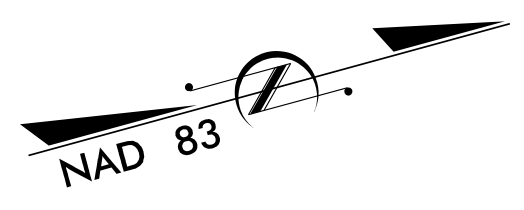
**NO PROPOSED UTILITY RELOCATIONS BY OTHERS ON THIS PLAN SHEET**

**SEE UC-23 FOR WATER/SEWER CONSTRUCTION**

9/13/18  
 TRANSPORTATION\31733-02 I-4400BB UTILITIES\4400BB-UT-U0-23.DGN

### UTILITIES BY OTHERS

ALL PROPOSED UTILITY WORK SHOWN ON THIS SHEET WILL BE DONE BY OTHERS. NO PAYMENT WILL BE MADE TO THE CONTRACTOR FOR PROPOSED UTILITY WORK SHOWN ON THIS SHEET.

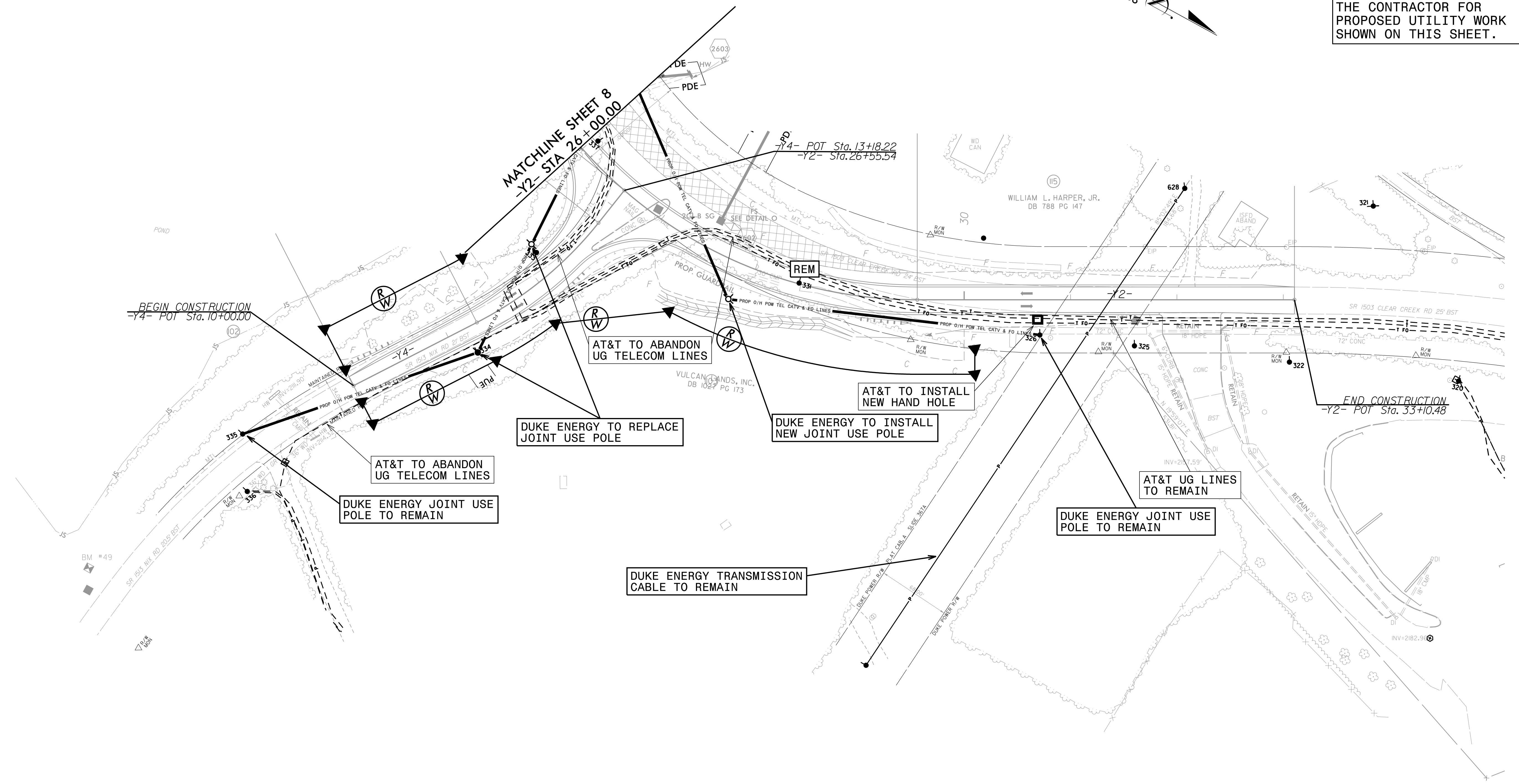
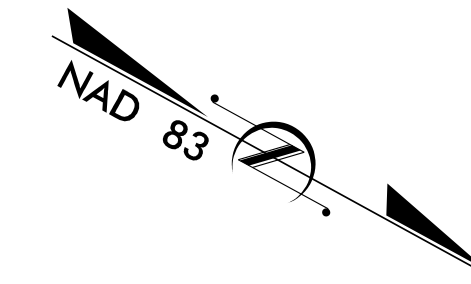


SEE UC-8 FOR  
WATER/SEWER CONSTRUCTION

9/13/18 TRANSPORTATION\31733-02 I-4400BB\UTILITIES\I-4400BB-UT-U0-25.DGN

### UTILITIES BY OTHERS

ALL PROPOSED UTILITY WORK SHOWN ON THIS SHEET WILL BE DONE BY OTHERS. NO PAYMENT WILL BE MADE TO THE CONTRACTOR FOR PROPOSED UTILITY WORK SHOWN ON THIS SHEET.



SEE UC-26 FOR  
WATER/SEWER CONSTRUCTION

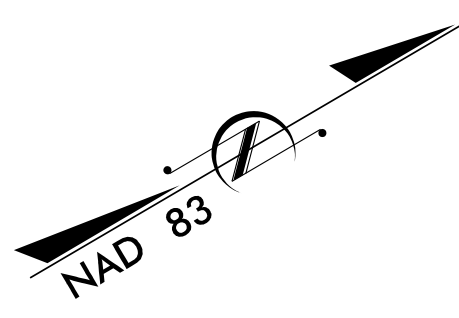
9/13/18  
TRANSPORTATION\31733-02\_I-4400BB\UTILITIES\4400BB\_UT\_UO-26.DGN

9/13/18

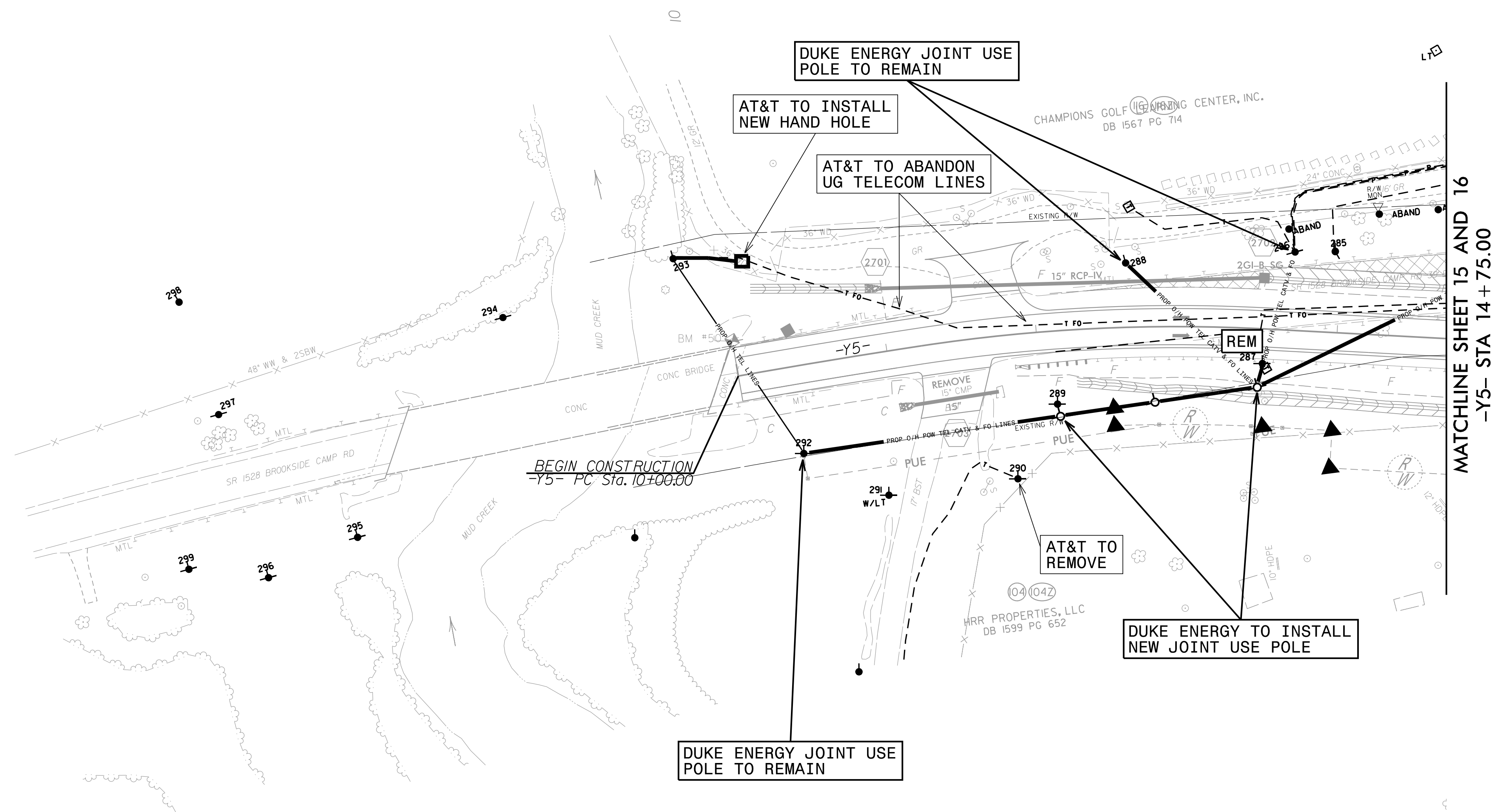
PROJECT REFERENCE NO.	SHEET NO.
I-4400BB	U0-12
THIS SHEET CORRESPONDS TO RDY-27	

### UTILITIES BY OTHERS

ALL PROPOSED UTILITY WORK SHOWN ON THIS SHEET WILL BE DONE BY OTHERS. NO PAYMENT WILL BE MADE TO THE CONTRACTOR FOR PROPOSED UTILITY WORK SHOWN ON THIS SHEET.



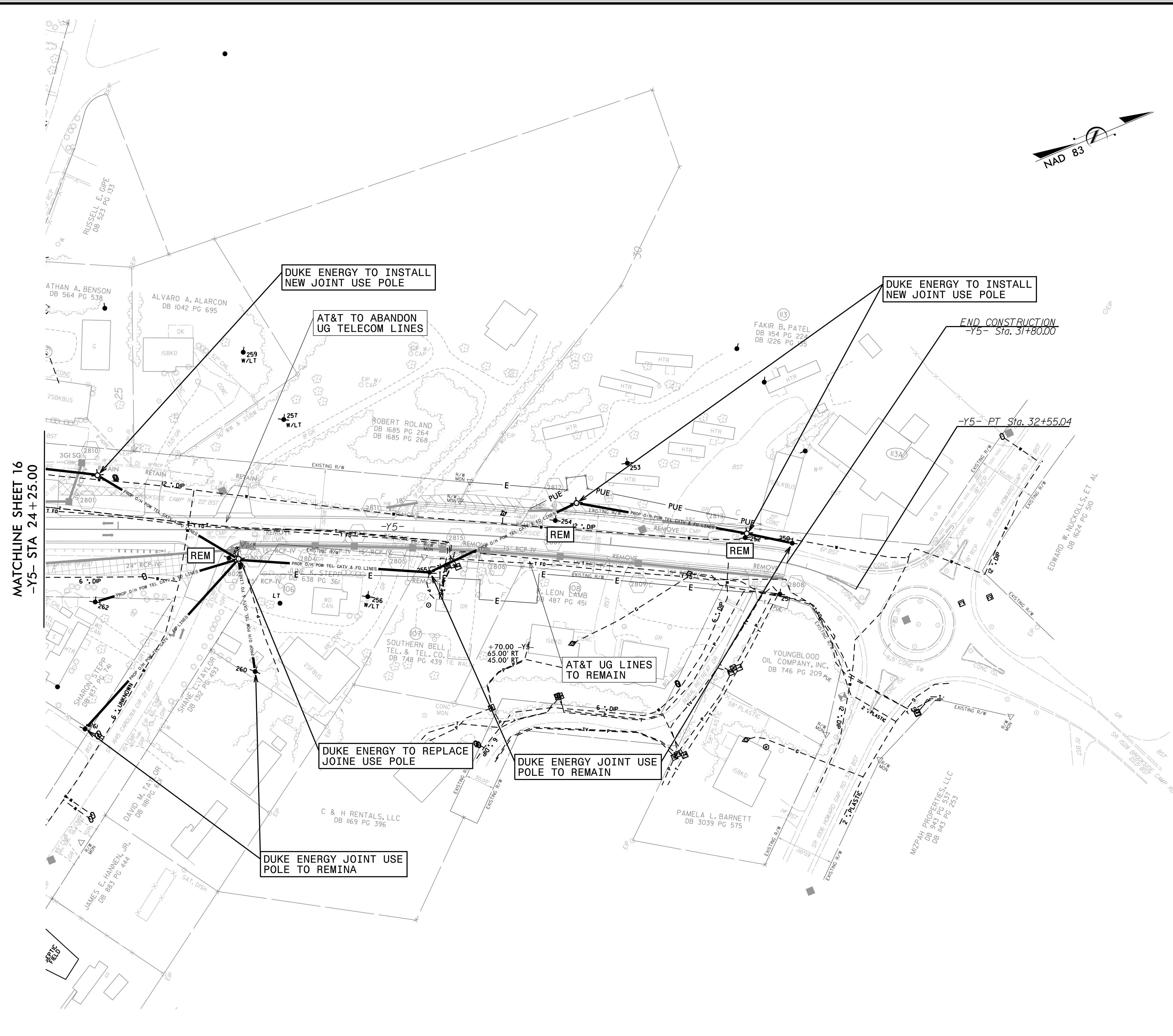
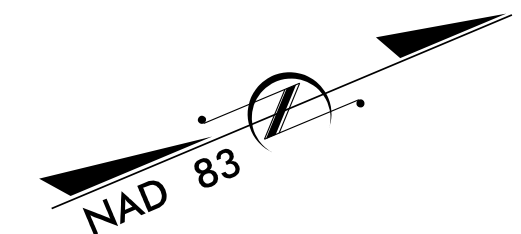
TRANSPORTATION\31723-02\_I-4400BB\UTILITIES\I4400BB\_U0-12.DGN



MATCHLINE SHEET 15 AND 16  
-Y5- STA 14+75.00

### UTILITIES BY OTHERS

ALL PROPOSED UTILITY WORK SHOWN ON THIS SHEET WILL BE DONE BY OTHERS. NO PAYMENT WILL BE MADE TO THE CONTRACTOR FOR PROPOSED UTILITY WORK SHOWN ON THIS SHEET.



MATCHLINE SHEET 16  
-Y5- STA 24+25.00

END CONSTRUCTION  
-Y5- Sta. 31+80.00

-Y5- PT Sta. 32+55.04

TRANSPORTATION:31733-02 I-4400BB UTILITIES:14400BB\_UT\_UO-28.DGN

9/13/18