

**This electronic collection of documents is provided
for the convenience of the user
and is Not a Certified Document –**

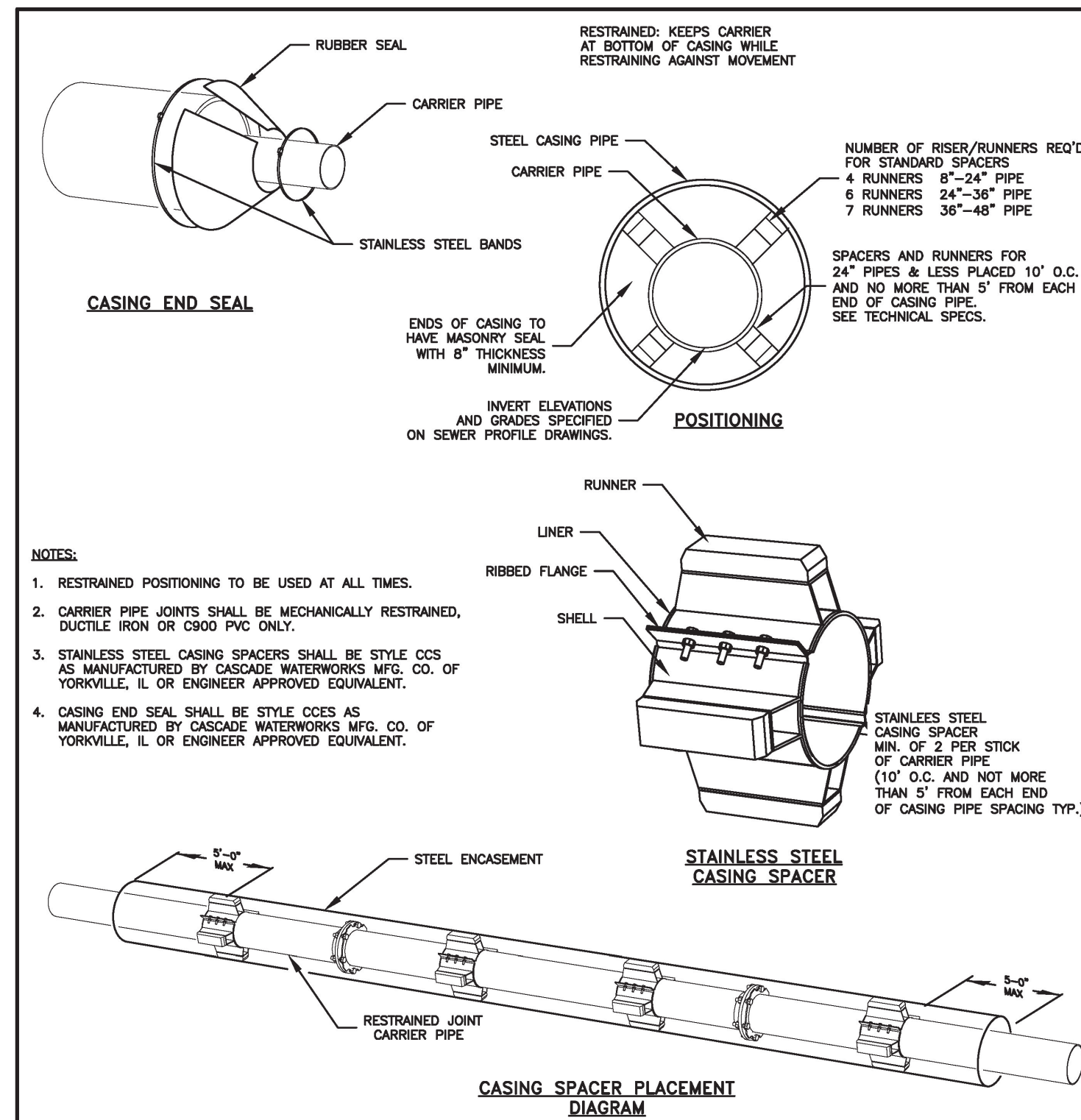
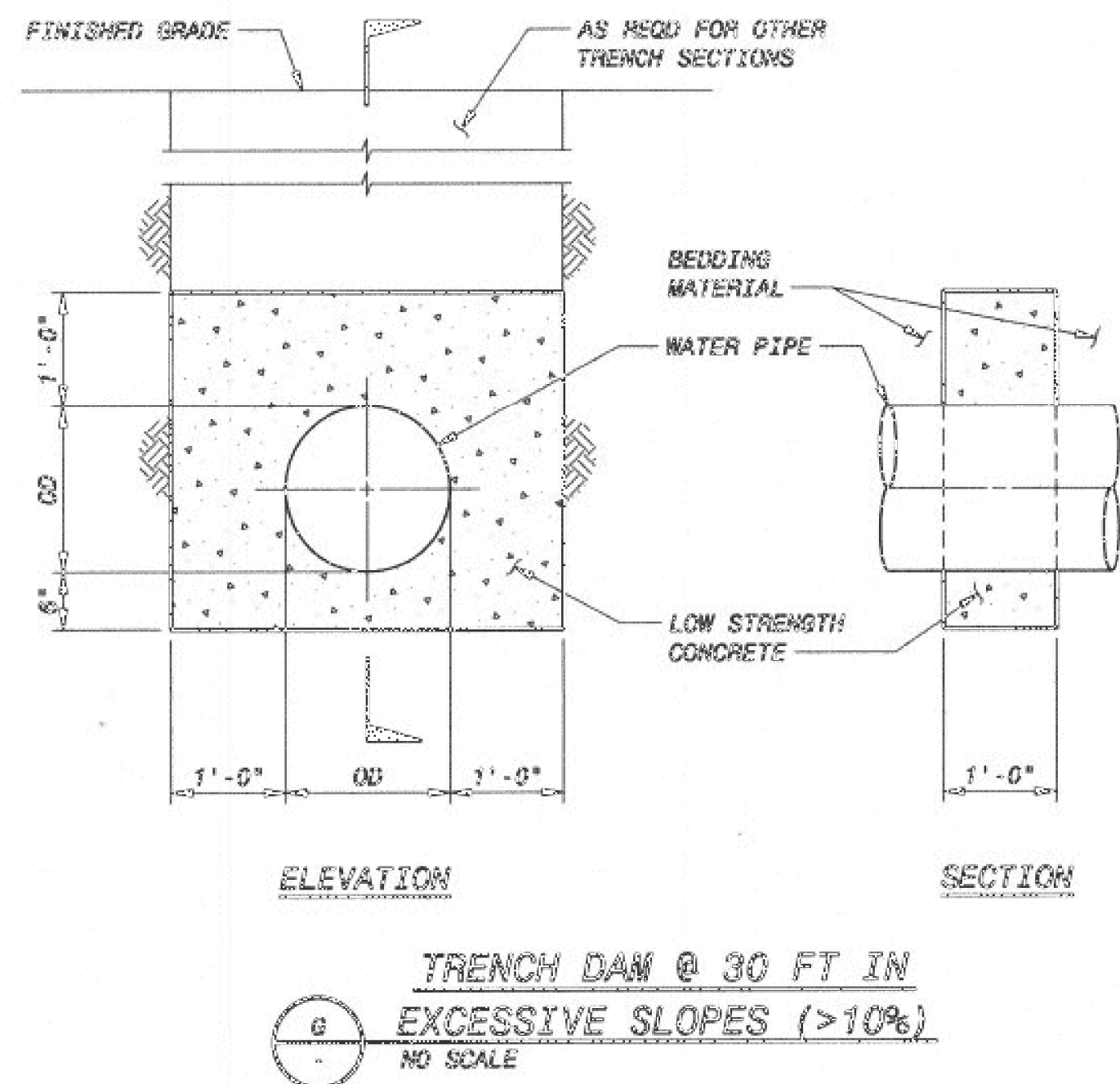
**The documents contained herein were originally issued
and sealed by the individuals whose names and license
numbers appear on each page, on the dates appearing
with their signature on that page.**

**This file or an individual page
shall not be considered a certified document.**

PROJECT SPECIFIC DETAILS

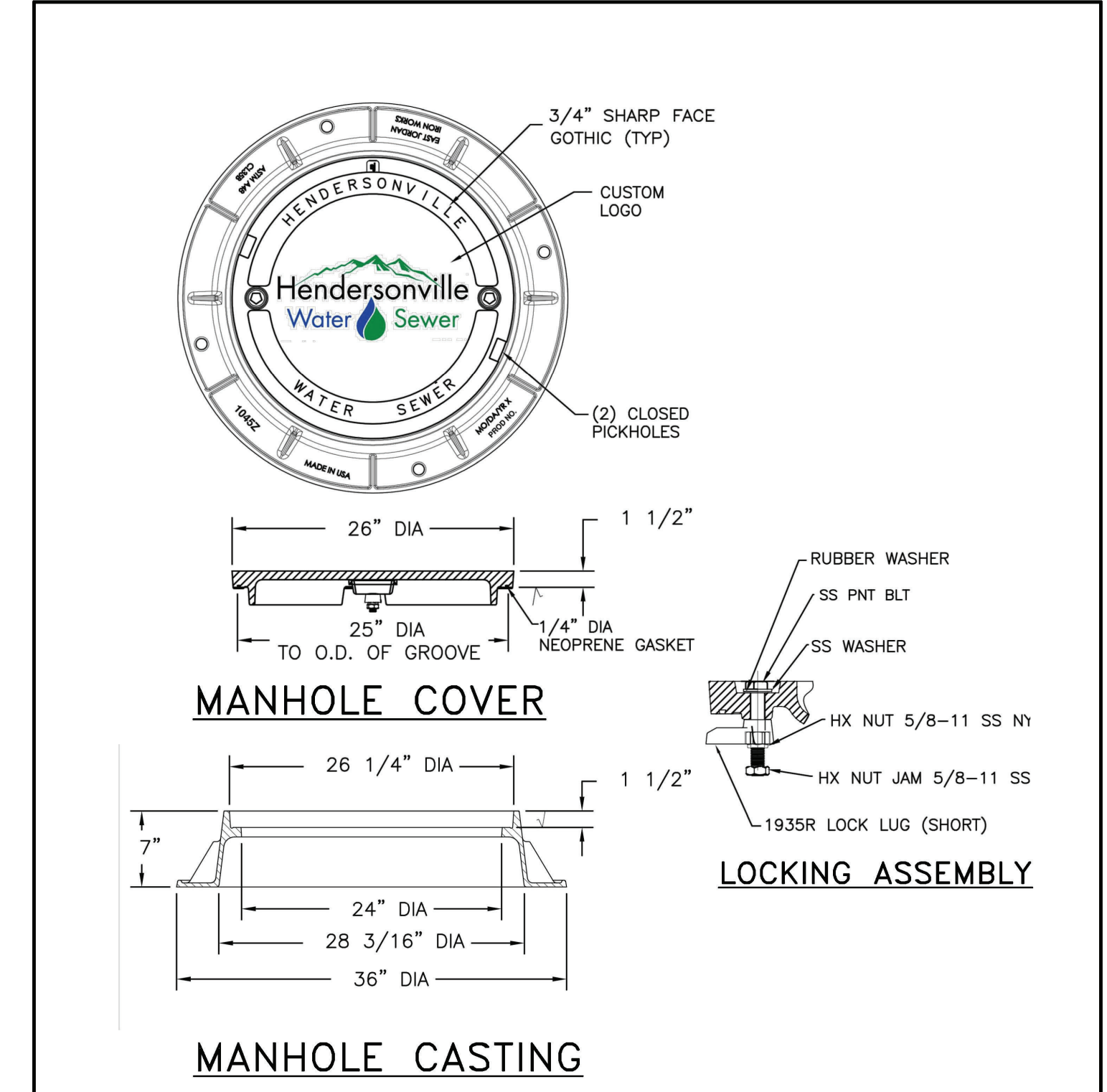
HENDERSON COUNTY

PROJECT REFERENCE NO.	SHEET NO.
I-4400BB	UC-3F
DESIGNED BY: CCC	
DRAWN BY: CCC	
CHECKED BY: SSD	
APPROVED BY: DWH	
REVISED:	
NORTH CAROLINA DEPARTMENT OF TRANSPORTATION UTILITIES ENGINEERING SECTION PHONE: (919) 707-6690 FAX: (919) 250-4151	
UTILITY CONSTRUCTION DOCUMENT NOT CONSIDERED FINAL UNLESS ALL SIGNATURES COMPLETED	



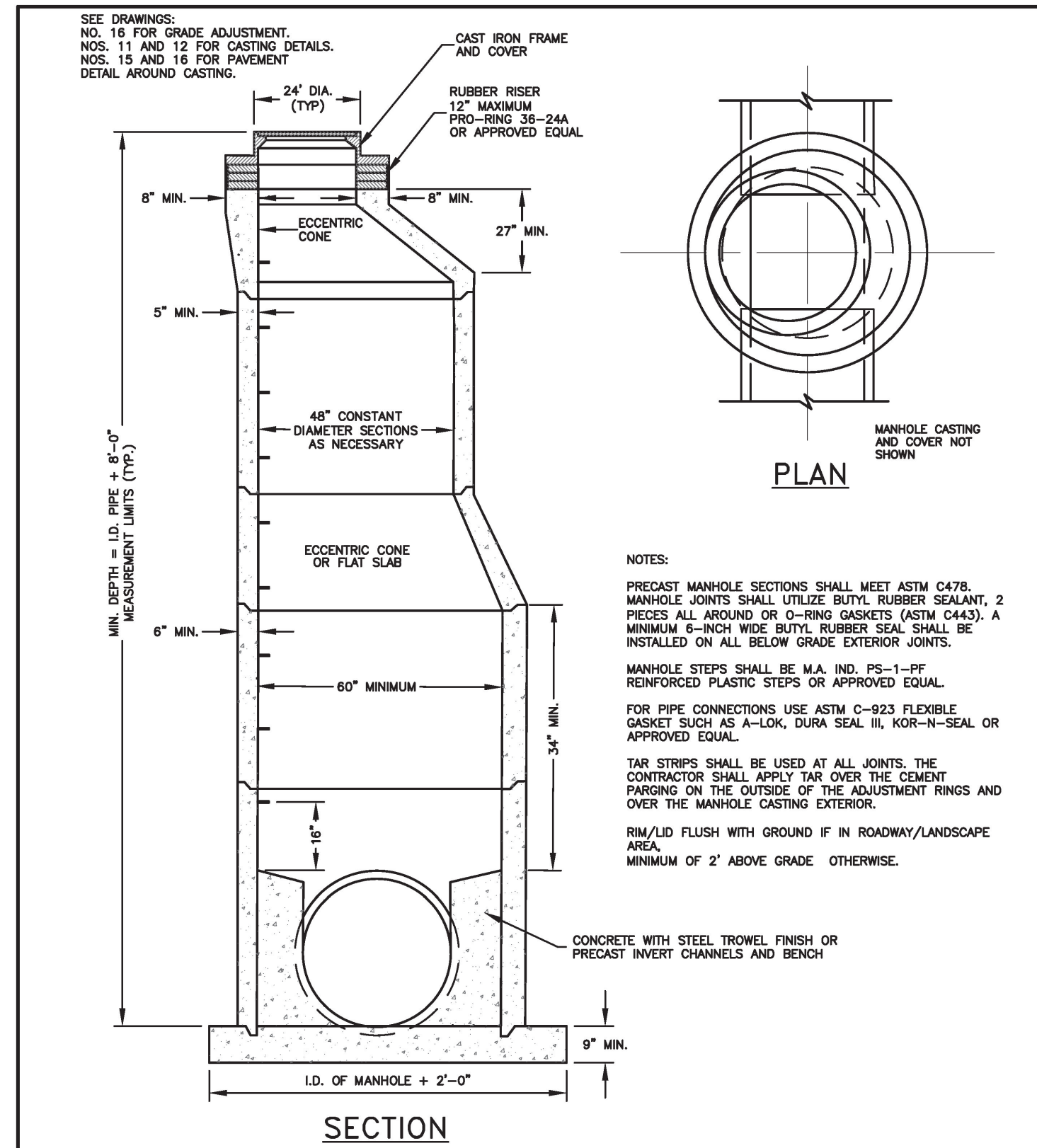
DATE: 01/12/2019 SS-D DWG. NO. 14	
SCALE: NOT TO SCALE	
City of Hendersonville Engineering Department 305 Williams Street Hendersonville, NC 28792 (828) 697-3000 (office) www.cityofhendersonville.org	

H:\DETAILS\Sewer Only - Working\updates\COH-SEWER-DETAILS.dwg, 3/4/2019 1:44:33 PM



DATE: 01/12/2019 SS-D DWG. NO. 12	
SCALE: NOT TO SCALE	
City of Hendersonville Engineering Department 305 Williams Street Hendersonville, NC 28792 (828) 697-3000 (office) www.cityofhendersonville.org	

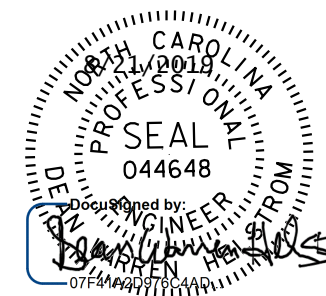
H:\DETAILS\Sewer Only - Working\updates\COH-SEWER-DETAILS.dwg, 3/4/2019 1:44:30 PM



DATE: 01/12/2019 SS-D DWG. NO. 7	
SCALE: NOT TO SCALE	
City of Hendersonville Engineering Department 305 Williams Street Hendersonville, NC 28792 (828) 697-3000 (office) www.cityofhendersonville.org	

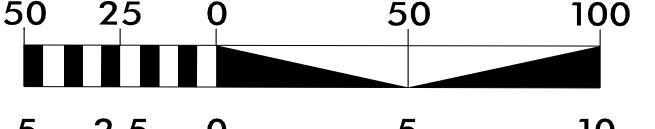
Asheville
 828-253-2796
 919-977-9465

Boone, NC
 Charlotte, NC
 Durham, NC
 Fayetteville, NC
 Greenville, SC
 Hendersonville, NC
 Kinston, NC
 Raleigh, NC
 Salisbury, NC
 Winston-Salem, NC
 Asheville, NC
 Charlotte, NC
 Durham, NC
 Fayetteville, NC
 Greenville, SC
 Hendersonville, NC
 Kinston, NC
 Raleigh, NC
 Salisbury, NC
 Winston-Salem, NC

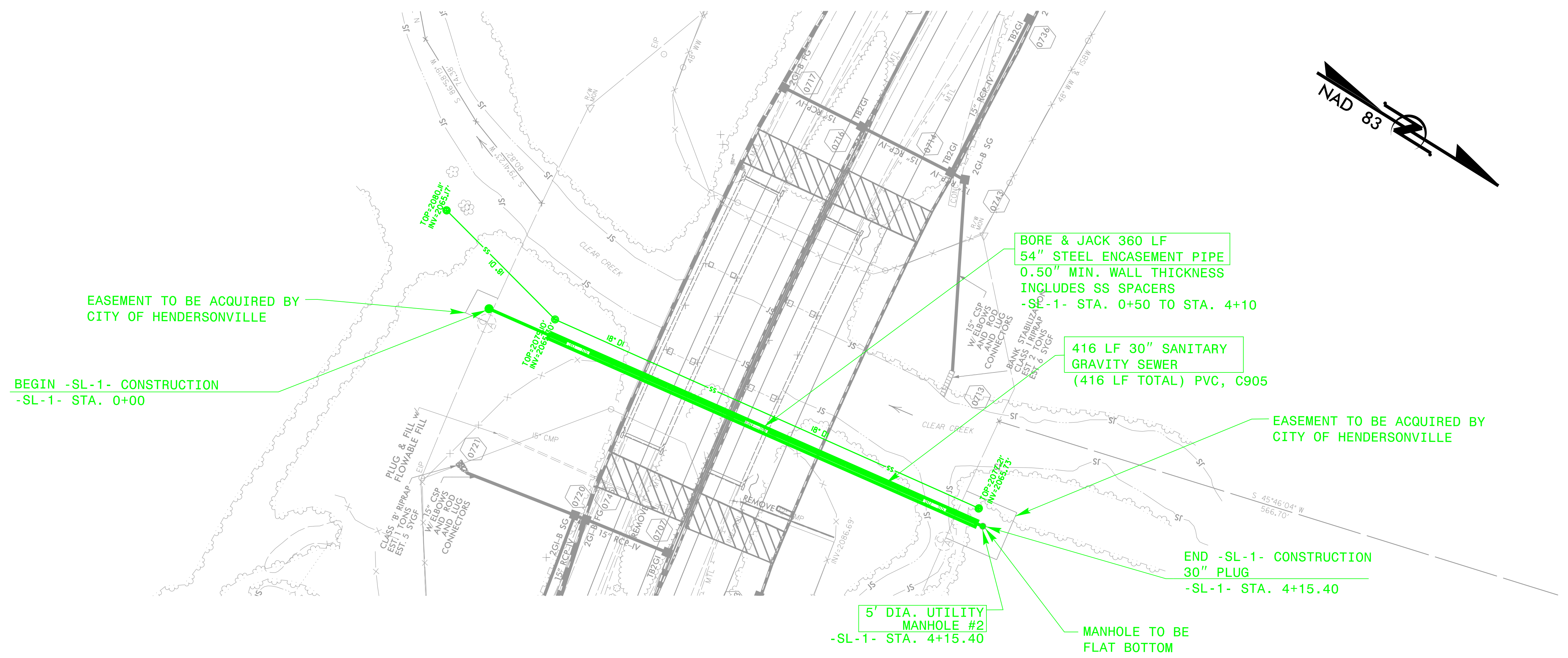
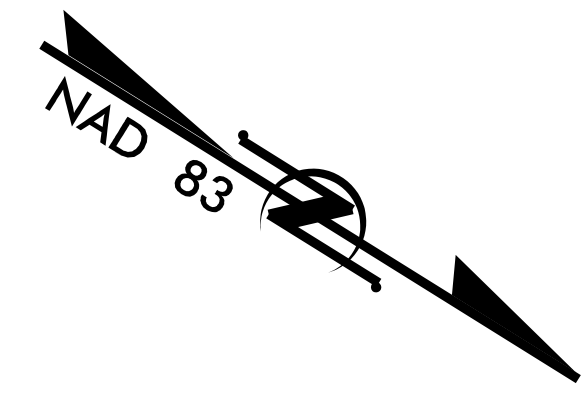
PROJECT REFERENCE NO.	SHEET NO.
I-4400BB	UC-7
DESIGNED BY: CCC	
DRAWN BY: CCC	
CHECKED BY: SSD	
APPROVED BY: DWH	
REVISED: 8-20-19	
NORTH CAROLINA DEPARTMENT OF TRANSPORTATION	
UTILITIES ENGINEERING SEC. PHONE: (919) 707-6690 FAX: (919) 250-4151	
UTILITY CONSTRUCTION PLANS ONLY	

DOCUMENT NOT CONSIDERED FINAL
UNTIL ALL SIGNATURES ARE COMPLETED

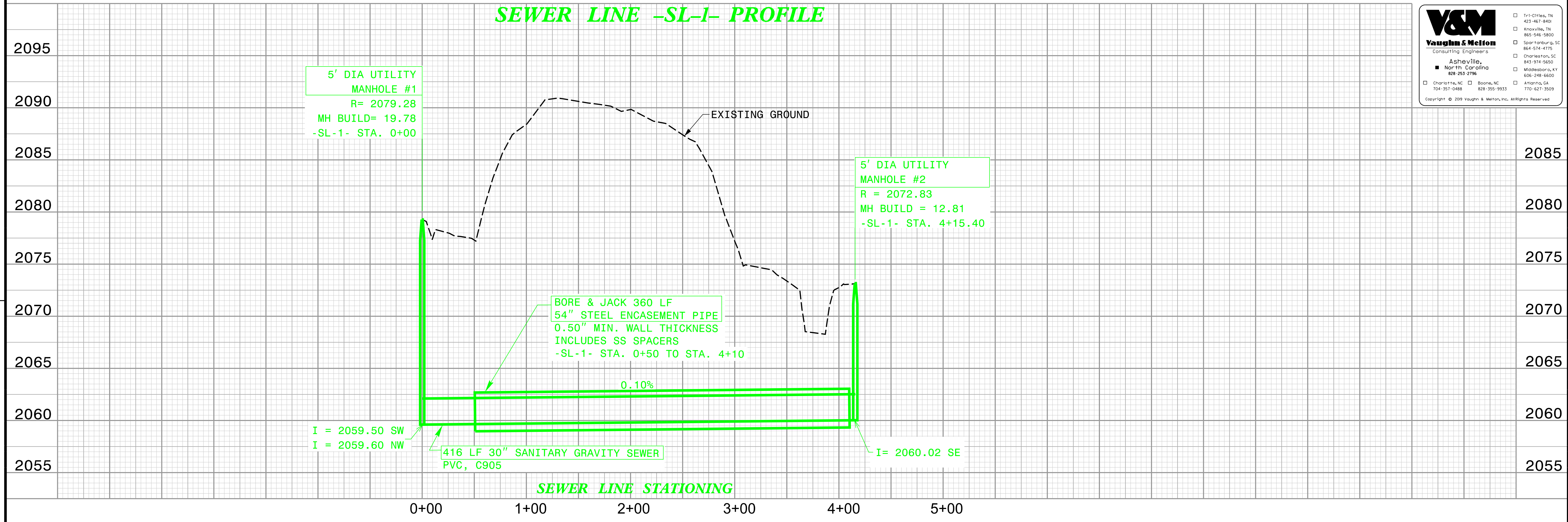
UTILITY CONSTRUCTION



TOP SCALE: HORIZ. 1" = 50'
BOTTOM SCALE: VERT. 1" = 5'



SEWER LINE -SL-1- PROFILE

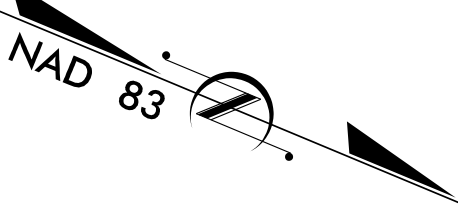
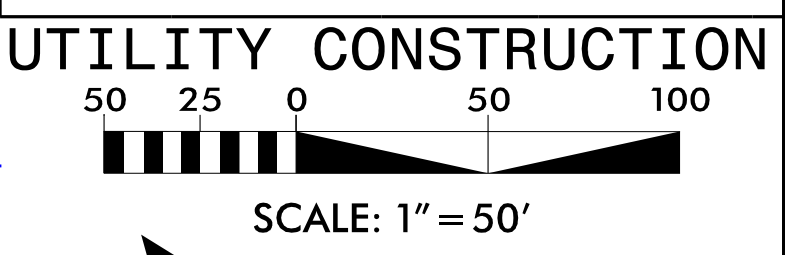


111 Clites, TN 42342-8460
 Knoxville, TN 865-546-5800
 Spartanburg, SC 864-574-4775
 Charleston, SC 843-974-5650
 Asheville, NC 828-253-2796
 Midway, KY 502-248-6600
 Charlotte, NC 704-351-0488
 Boone, NC 828-355-9933
 Atlanta, GA 770-627-3509
 Copyright © 2019 Vaughn & Melton, Inc. All Rights Reserved

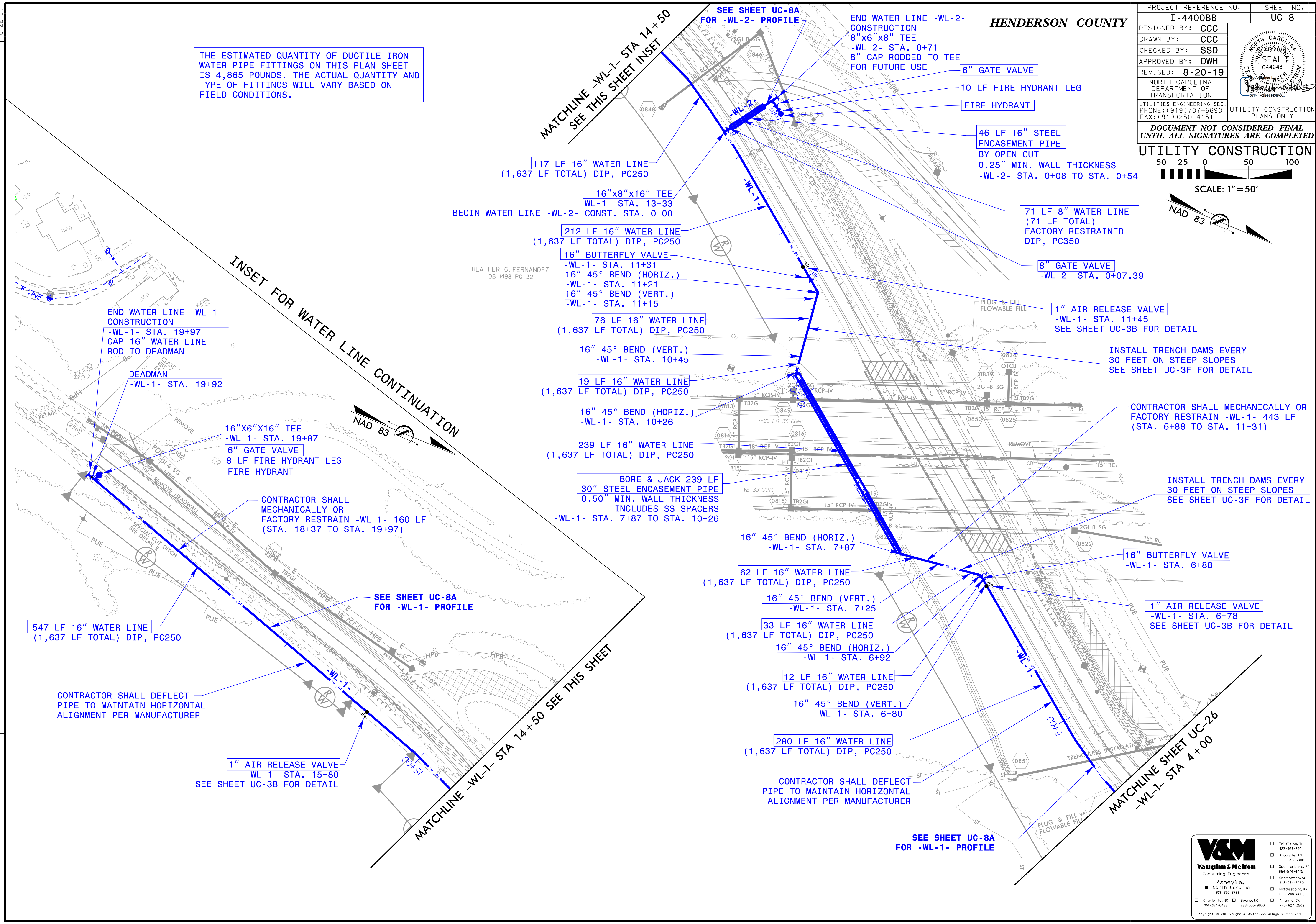
8/21/2019 8:09:38 AM
W:\Users\vaughn\Documents\Transportation\31733-02 I-4400BB\Utilities\Design\I4400BB_UT_SHEET_7.dgn
User: vaughn

B-20-19

PROJECT REFERENCE NO.	SHEET NO.
I-4400BB	UC-8
DESIGNED BY: CCC	
DRAWN BY: CCC	
CHECKED BY: SSD	
APPROVED BY: DWH	
REVISED: 8-20-19	
NORTH CAROLINA DEPARTMENT OF TRANSPORTATION UTILITIES ENGINEERING SEC. PHONE: (919) 707-6690 FAX: (919) 250-4151	
UTILITY CONSTRUCTION PLANS ONLY DOCUMENT NOT CONSIDERED FINAL UNTIL ALL SIGNATURES ARE COMPLETED	



THE ESTIMATED QUANTITY OF DUCTILE IRON WATER PIPE FITTINGS ON THIS PLAN SHEET IS 4,865 POUNDS. THE ACTUAL QUANTITY AND TYPE OF FITTINGS WILL VARY BASED ON FIELD CONDITIONS.



547 LF 16" WATER LINE
(1,637 LF TOTAL) DIP, PC250

CONTRACTOR SHALL DEFLECT PIPE TO MAINTAIN HORIZONTAL ALIGNMENT PER MANUFACTURER

1" AIR RELEASE VALVE
-WL-1- STA. 15+80
SEE SHEET UC-3B FOR DETAIL

16"x6"x16" TEE
-WL-1- STA. 19+87
6" GATE VALVE
8 LF FIRE HYDRANT LEG
FIRE HYDRANT

CONTRACTOR SHALL MECHANICALLY OR FACTORY RESTRAIN -WL-1- 160 LF (STA. 18+37 TO STA. 19+97)

SEE SHEET UC-8A FOR -WL-1- PROFILE

117 LF 16" WATER LINE
(1,637 LF TOTAL) DIP, PC250

16"x8"x16" TEE
-WL-1- STA. 13+33
BEGIN WATER LINE -WL-2- CONST. STA. 0+00

212 LF 16" WATER LINE
(1,637 LF TOTAL) DIP, PC250

16" BUTTERFLY VALVE
-WL-1- STA. 11+31
16" 45° BEND (HORIZ.)
-WL-1- STA. 11+21
16" 45° BEND (VERT.)
-WL-1- STA. 11+15

HEATHER G. FERNANDEZ
DB 1498 PG 321

76 LF 16" WATER LINE
(1,637 LF TOTAL) DIP, PC250

16" 45° BEND (VERT.)
-WL-1- STA. 10+45

19 LF 16" WATER LINE
(1,637 LF TOTAL) DIP, PC250

16" 45° BEND (HORIZ.)
-WL-1- STA. 10+26

239 LF 16" WATER LINE
(1,637 LF TOTAL) DIP, PC250

BORE & JACK 239 LF 30" STEEL ENCASMENT PIPE 0.50" MIN. WALL THICKNESS INCLUDES SS SPACERS
-WL-1- STA. 7+87 TO STA. 10+26

16" 45° BEND (HORIZ.)
-WL-1- STA. 7+87

62 LF 16" WATER LINE
(1,637 LF TOTAL) DIP, PC250

16" 45° BEND (VERT.)
-WL-1- STA. 7+25

33 LF 16" WATER LINE
(1,637 LF TOTAL) DIP, PC250

16" 45° BEND (HORIZ.)
-WL-1- STA. 6+92

12 LF 16" WATER LINE
(1,637 LF TOTAL) DIP, PC250

16" 45° BEND (VERT.)
-WL-1- STA. 6+80

280 LF 16" WATER LINE
(1,637 LF TOTAL) DIP, PC250

CONTRACTOR SHALL DEFLECT PIPE TO MAINTAIN HORIZONTAL ALIGNMENT PER MANUFACTURER

SEE SHEET UC-8A FOR -WL-1- PROFILE

END WATER LINE -WL-2- CONSTRUCTION
8"x6"x8" TEE
-WL-2- STA. 0+71
8" CAP RODDED TO TEE FOR FUTURE USE

6" GATE VALVE

10 LF FIRE HYDRANT LEG

FIRE HYDRANT

46 LF 16" STEEL ENCASMENT PIPE BY OPEN CUT
0.25" MIN. WALL THICKNESS
-WL-2- STA. 0+08 TO STA. 0+54

71 LF 8" WATER LINE
(71 LF TOTAL)
FACTORY RESTRAINED
DIP, PC350

8" GATE VALVE
-WL-2- STA. 0+07.39

1" AIR RELEASE VALVE
-WL-1- STA. 11+45
SEE SHEET UC-3B FOR DETAIL

INSTALL TRENCH DAMS EVERY 30 FEET ON STEEP SLOPES
SEE SHEET UC-3F FOR DETAIL

CONTRACTOR SHALL MECHANICALLY OR FACTORY RESTRAIN -WL-1- 443 LF (STA. 6+88 TO STA. 11+31)

INSTALL TRENCH DAMS EVERY 30 FEET ON STEEP SLOPES
SEE SHEET UC-3F FOR DETAIL

16" BUTTERFLY VALVE
-WL-1- STA. 6+88

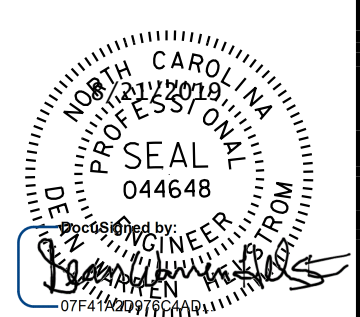
1" AIR RELEASE VALVE
-WL-1- STA. 6+78
SEE SHEET UC-3B FOR DETAIL

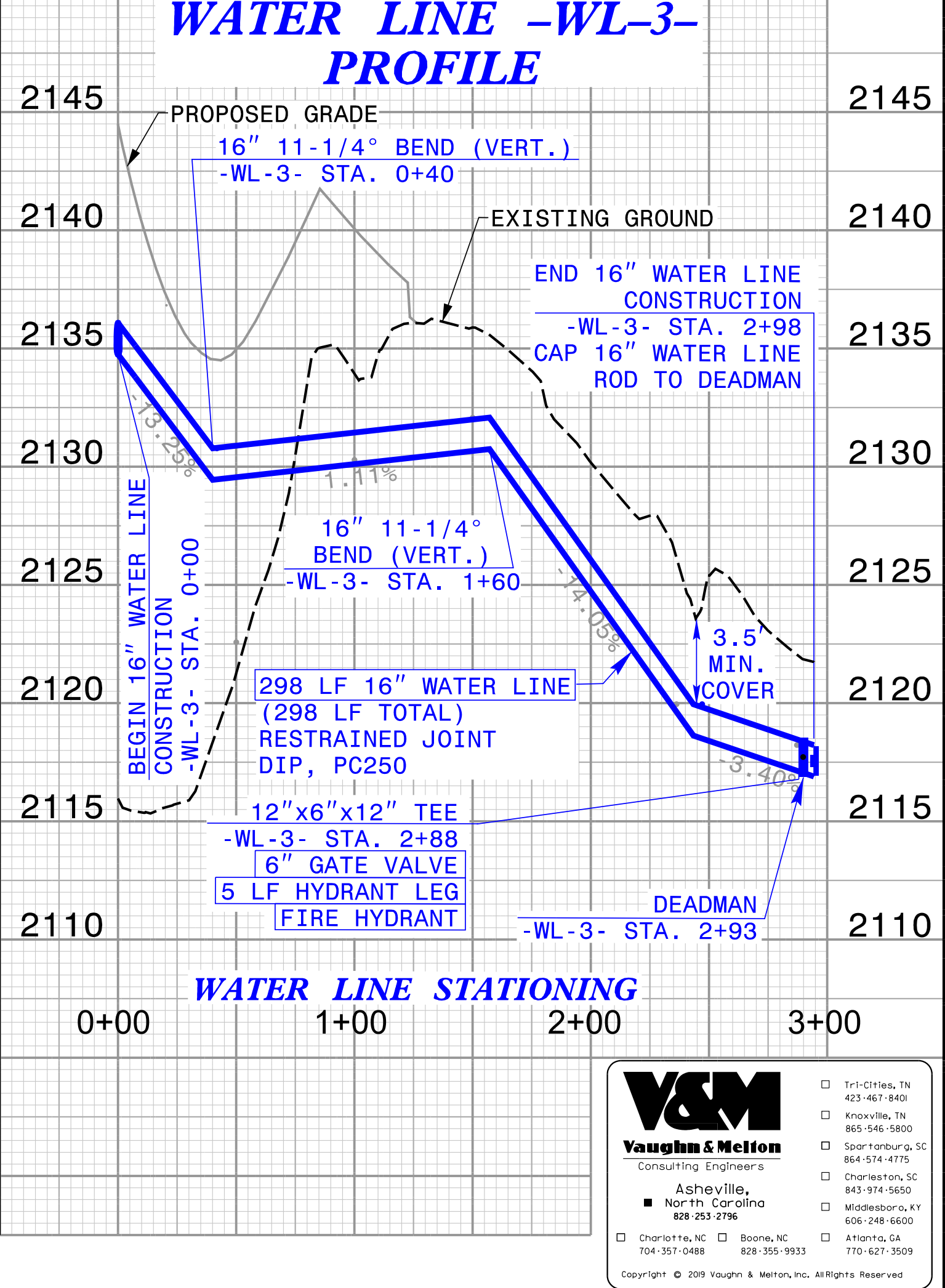
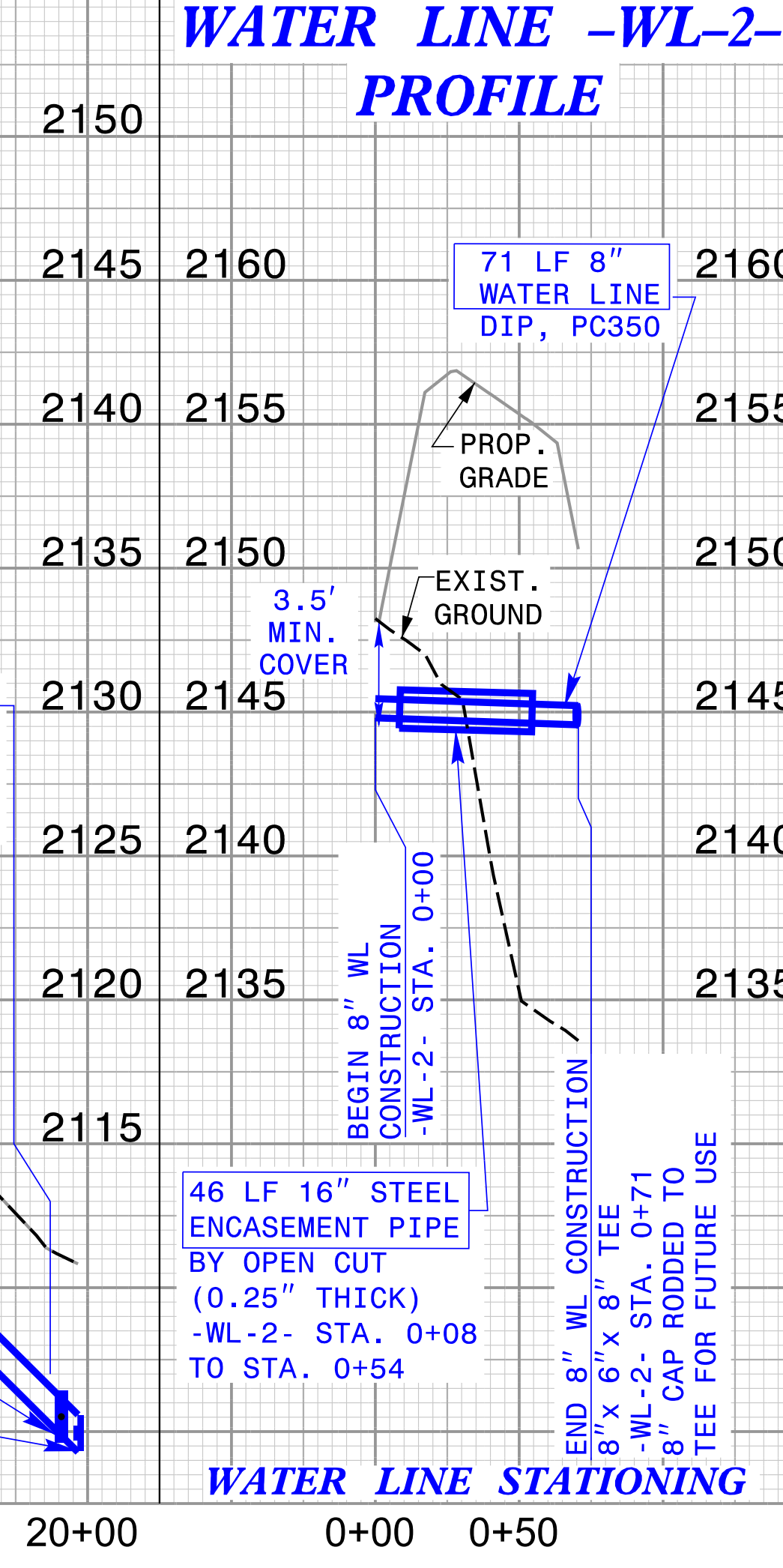
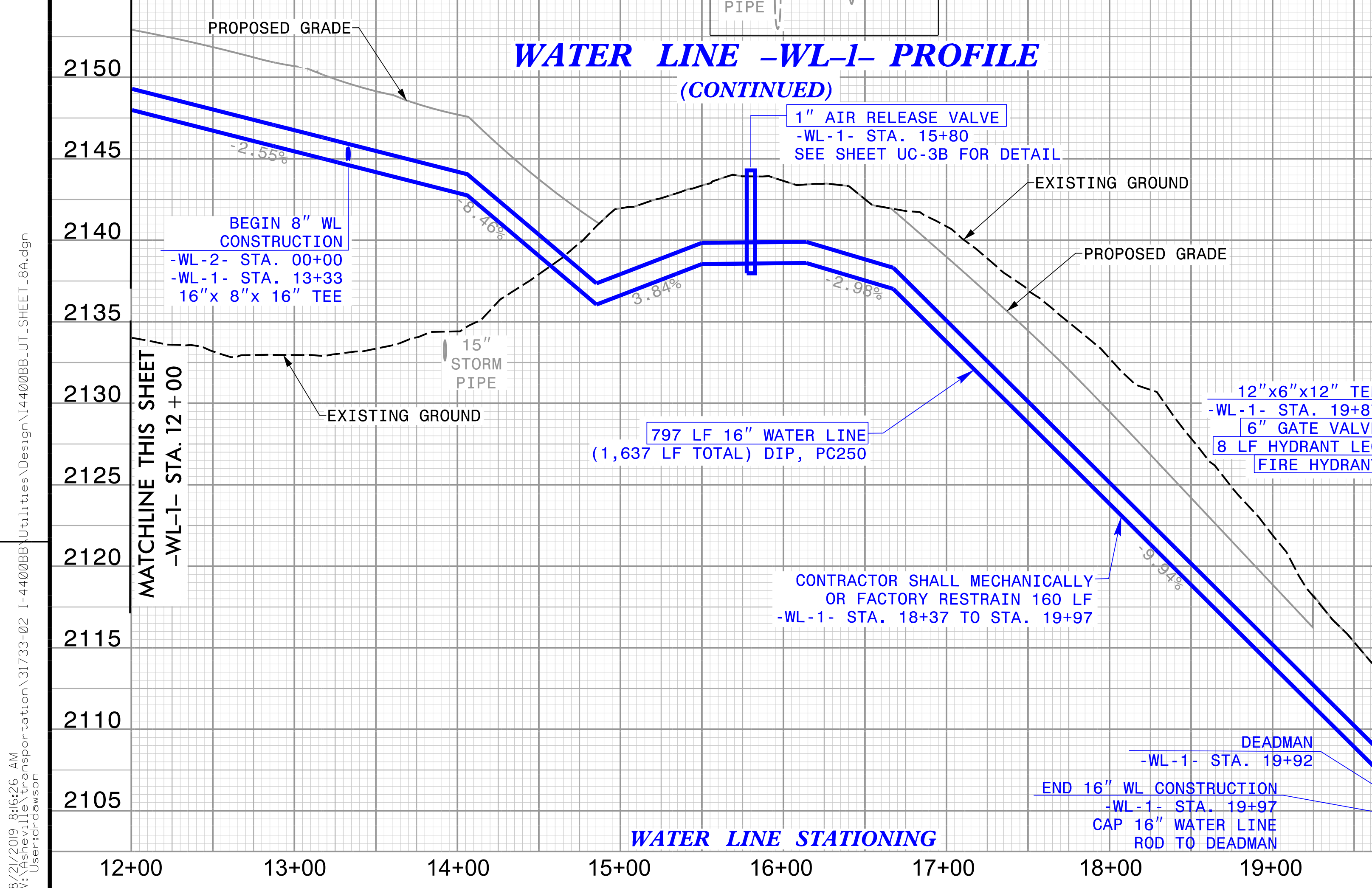
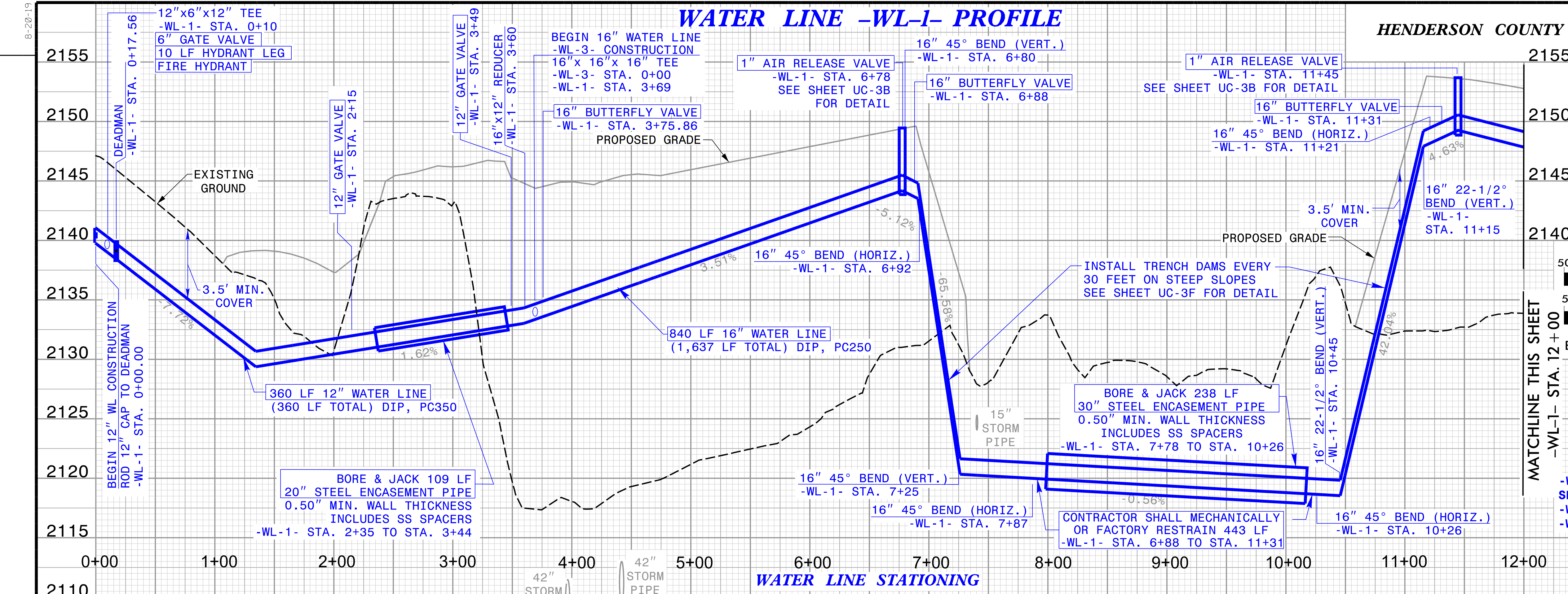
MATCHLINE SHEET UC-26
-WL-1- STA 4+00

8/21/2019 8:21:58 AM V:\Asheville\Transportation\31733-02 I-4400BB Utilities\Design\14400BB_UT_SHEET_8.dgn User:rd-dawson

WATER LINE -WL-1- PROFILE

HENDERSON COUNTY

PROJECT REFERENCE NO.	I-4400BB	SHEET NO.	UC-8A
DESIGNED BY:	CCC		
DRAWN BY:	CCC		
CHECKED BY:	SSD		
APPROVED BY:	DWH		
REVISED:	8-20-19		
NORTH CAROLINA DEPARTMENT OF TRANSPORTATION		UTILITY CONSTRUCTION PLANS ONLY	
UTILITY ENGINEERING, SEC. PHONE: (919) 707-6650 FAX: (919) 250-4151			
DOCUMENT NOT CONSIDERED FINAL UNTIL ALL SIGNATURES ARE COMPLETED			



8/21/2019 8:16:26 AM V:\asheville\transportation\1-4400BB\Utilities\Design\4400BB_UT_SHEET_8A.dgn User: gregson

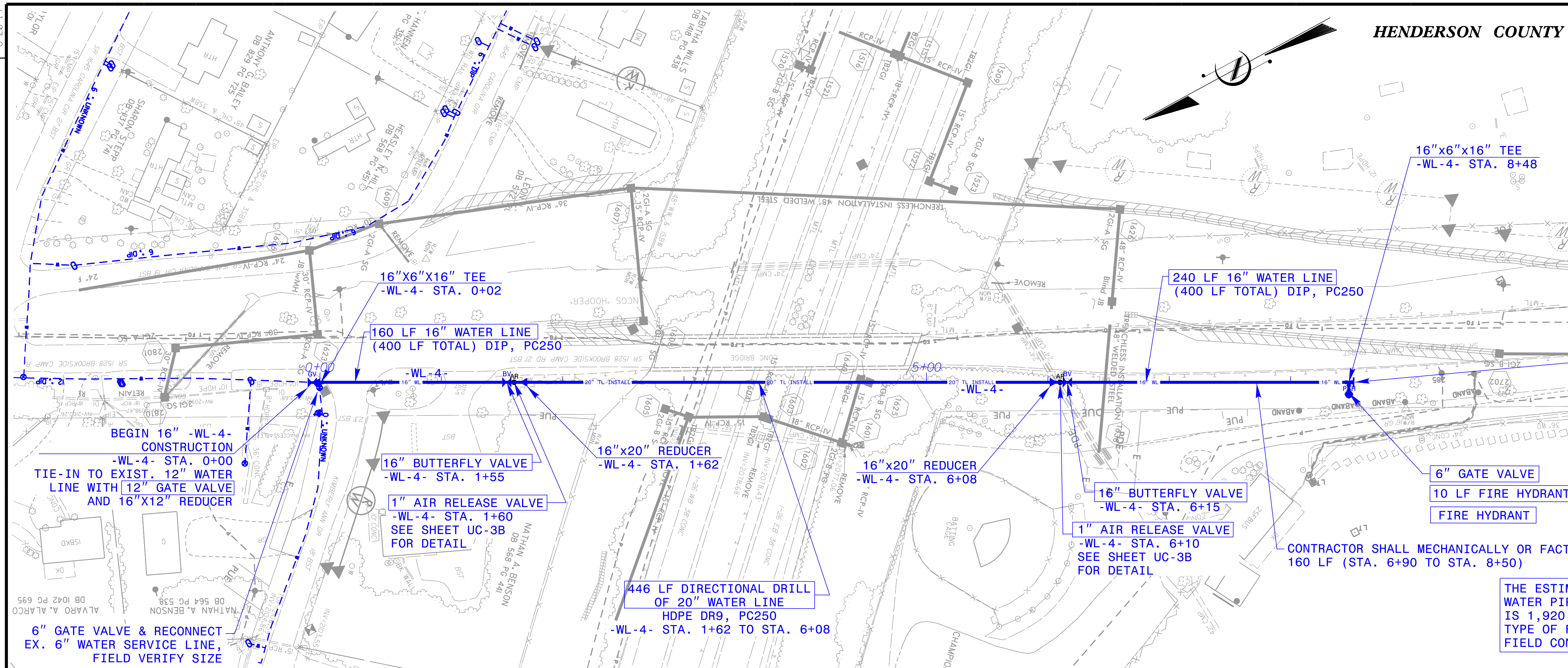
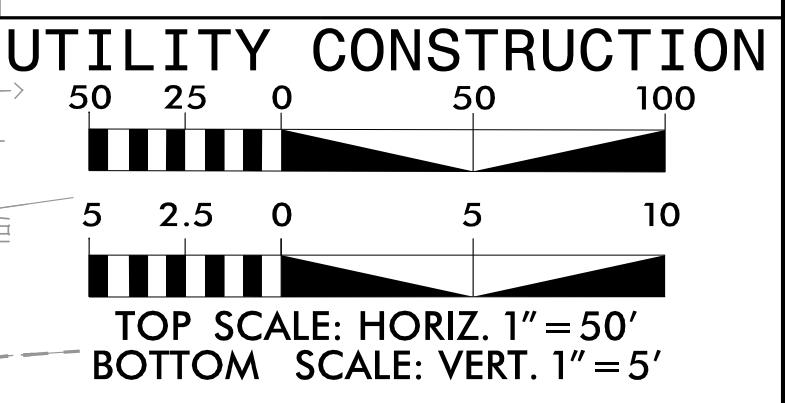


Tr-10166, TN 423-467-8401
 Knoxville, TN 865-946-5800
 Spartanburg, SC 864-574-4775
 Charleston, SC 843-974-5650
 Indianapolis, IN 616-248-6600
 Charlotte, NC 828-253-2796
 104-351-0488 828-355-9333
 Atlanta, GA 770-627-3509
 Copyright © 2019 Vaughn & Melton, Inc. All Rights Reserved

8-20-19

HENDERSON COUNTY

PROJECT REFERENCE NO. I-4400BB	SHEET NO. UC-16
DESIGNED BY: CCC	
DRAWN BY: CCC	
CHECKED BY: SSD	
APPROVED BY: DWH	
REVISED: 8-20-19	
NORTH CAROLINA DEPARTMENT OF TRANSPORTATION UTILITIES ENGINEERING SEC. PHONE: (919) 707-6690 FAX: (919) 250-4151	
UTILITY CONSTRUCTION PLANS ONLY DOCUMENT NOT CONSIDERED FINAL UNTIL ALL SIGNATURES ARE COMPLETED	

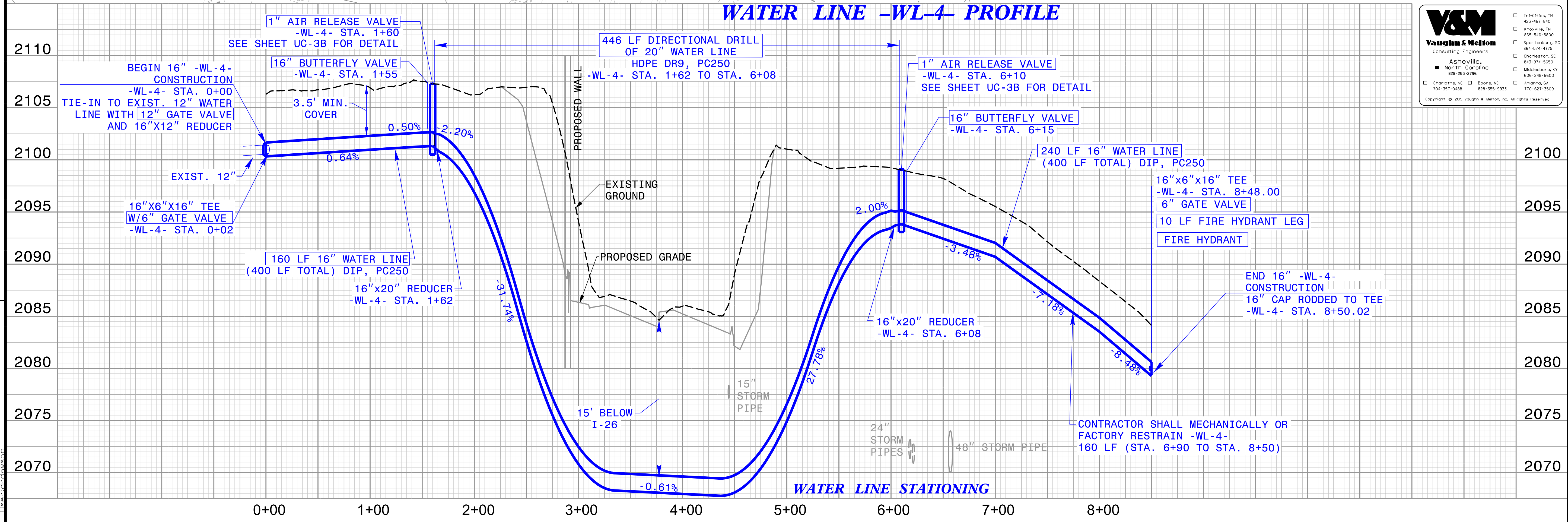


END 16" -WL-4- CONSTRUCTION
16" CAP RODDED TO TEE
-WL-4- STA. 8+50

CONTRACTOR SHALL MECHANICALLY OR FACTORY RESTRAIN -WL-4- 160 LF (STA. 6+90 TO STA. 8+50)

THE ESTIMATED QUANTITY OF DUCTILE IRON WATER PIPE FITTINGS ON THIS PLAN SHEET IS 1,920 POUNDS. THE ACTUAL QUANTITY AND TYPE OF FITTINGS WILL VARY BASED ON FIELD CONDITIONS.

WATER LINE -WL-4- PROFILE



V&M
Vaughn & Melton
Consulting Engineers

Asheville, NC
North Carolina
828-253-2796

1101 Hikes, TN 423-462-8469
Knoxville, TN 865-546-5800
Spartanburg, SC 864-574-4775
Charleston, SC 843-974-5650
Midwestboro, VT 802-248-6600
Atlanta, GA 770-627-3509

Copyright © 2019 Vaughn & Melton, Inc. All Rights Reserved

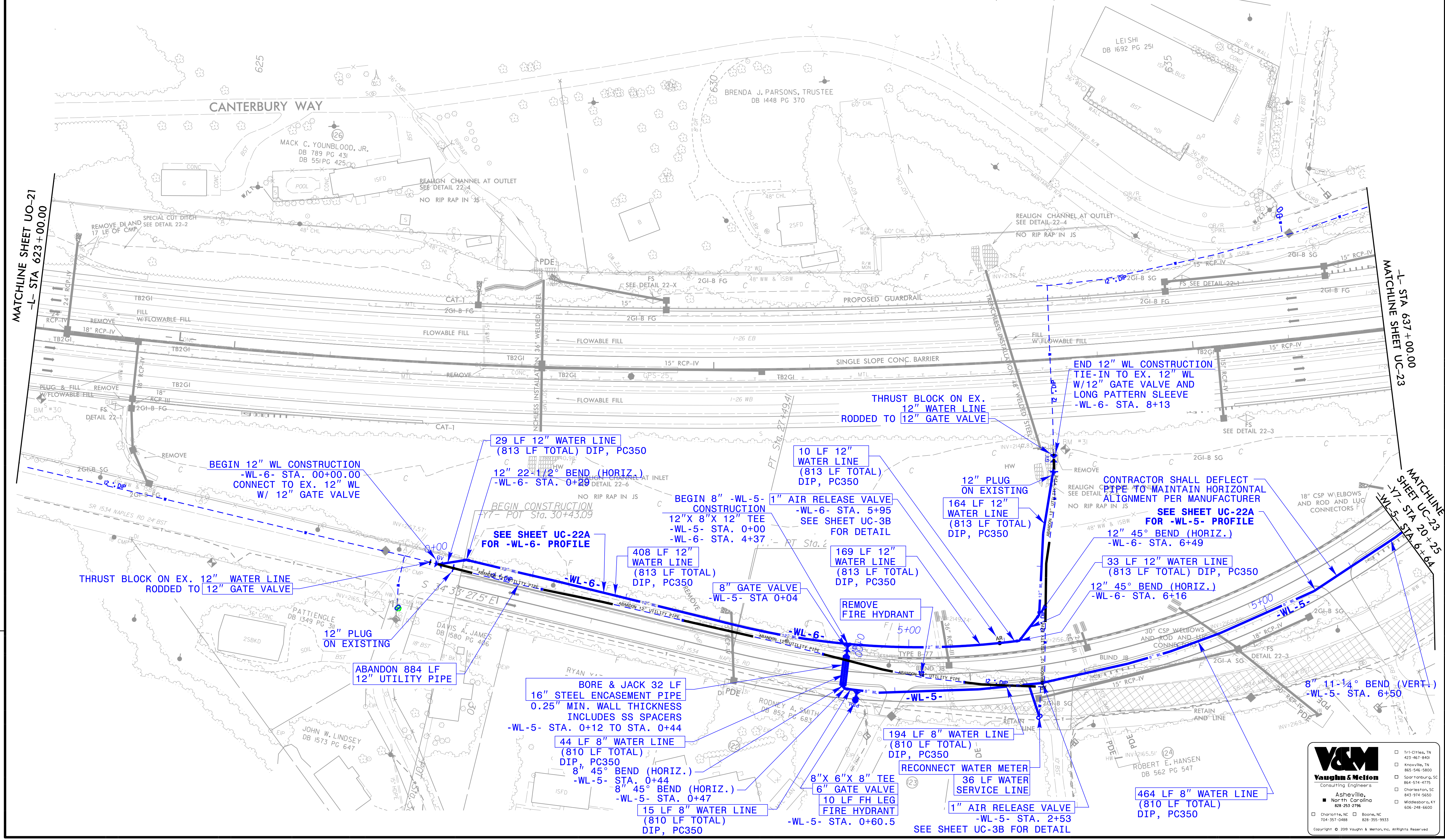
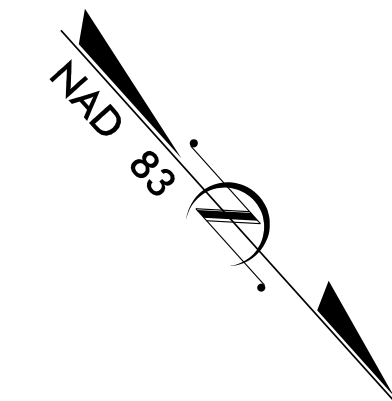
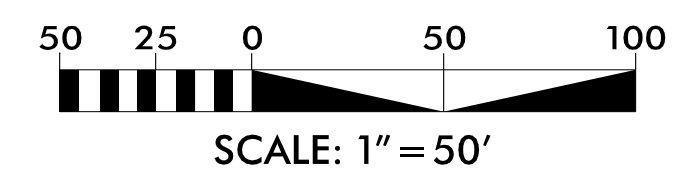
8/21/2019 8:06:59 AM
W:\Projects\Transportation\31733-02 I-4400BB\Utilities\Design\I4400BB_UT_SHEET_16.dgn

8-20-19

THE ESTIMATED QUANTITY OF DUCTILE IRON WATER PIPE FITTINGS ON THIS PLAN SHEET IS 1,815 POUNDS. THE ACTUAL QUANTITY AND TYPE OF FITTINGS WILL VARY BASED ON FIELD CONDITIONS.

HENDERSON COUNTY

PROJECT REFERENCE NO.	SHEET NO.
I-4400BB	UC-22
DESIGNED BY: CCC	
DRAWN BY: CCC	
CHECKED BY: SSD	
APPROVED BY: DWH	
REVISED: 8-20-19	UTILITY CONSTRUCTION PLANS ONLY
NORTH CAROLINA DEPARTMENT OF TRANSPORTATION UTILITIES ENGINEERING SEC. PHONE: (919) 707-6690 FAX: (919) 250-4151	
DOCUMENT NOT CONSIDERED FINAL UNTIL ALL SIGNATURES ARE COMPLETED UTILITY CONSTRUCTION	



MATCHLINE SHEET UC-21
-L- STA 623+00.00

MATCHLINE SHEET UC-23
-L- STA 637+00.00

MATCHLINE SHEET UC-25
-Y- STA 20+25
-W-5- STA 6+14

BEGIN 12" WL CONSTRUCTION
-WL-6- STA. 00+00.00
CONNECT TO EX. 12" WL
W/ 12" GATE VALVE

29 LF 12" WATER LINE
(813 LF TOTAL) DIP, PC350

12" 22-1/2° BEND (HORIZ.)
-WL-6- STA. 0+29

BEGIN CONSTRUCTION
-WL-6- POT Sta. 30+43.09
SEE SHEET UC-22A
FOR -WL-6- PROFILE

10 LF 12" WATER LINE
(813 LF TOTAL)
DIP, PC350

BEGIN 8" -WL-5- CONSTRUCTION
12" X 8" X 12" TEE
-WL-5- STA. 0+00
-WL-6- STA. 4+37

408 LF 12" WATER LINE
(813 LF TOTAL)
DIP, PC350

8" GATE VALVE
-WL-5- STA 0+04

169 LF 12" WATER LINE
(813 LF TOTAL)
DIP, PC350

REMOVE FIRE HYDRANT

12" PLUG ON EXISTING
164 LF 12" WATER LINE
(813 LF TOTAL)
DIP, PC350

CONTRACTOR SHALL DEFLECT
PIPE TO MAINTAIN HORIZONTAL
ALIGNMENT PER MANUFACTURER
SEE SHEET UC-22A
FOR -WL-5- PROFILE

12" 45° BEND (HORIZ.)
-WL-6- STA. 6+49

33 LF 12" WATER LINE
(813 LF TOTAL) DIP, PC350

12" 45° BEND (HORIZ.)
-WL-6- STA. 6+16

THRUST BLOCK ON EX. 12" WATER LINE
RODDED TO 12" GATE VALVE

12" PLUG ON EXISTING

ABANDON 884 LF
12" UTILITY PIPE

BORE & JACK 32 LF
16" STEEL ENCASEMENT PIPE
0.25" MIN. WALL THICKNESS
INCLUDES SS SPACERS
-WL-5- STA. 0+12 TO STA. 0+44

44 LF 8" WATER LINE
(810 LF TOTAL)
DIP, PC350

8" 45° BEND (HORIZ.)
-WL-5- STA. 0+44

8" 45° BEND (HORIZ.)
-WL-5- STA. 0+47

15 LF 8" WATER LINE
(810 LF TOTAL)
DIP, PC350

8" X 6" X 8" TEE
6" GATE VALVE
10 LF FH LEG
FIRE HYDRANT
-WL-5- STA. 0+60.5

194 LF 8" WATER LINE
(810 LF TOTAL)
DIP, PC350

RECONNECT WATER METER
36 LF WATER
SERVICE LINE

1" AIR RELEASE VALVE
-WL-5- STA. 2+53

SEE SHEET UC-3B FOR DETAIL

END 12" WL CONSTRUCTION
TIE-IN TO EX. 12" WL
W/ 12" GATE VALVE AND
LONG PATTERN SLEEVE
-WL-6- STA. 8+13

V&M
Vaughn & Melton
Consulting Engineers
Asheville, North Carolina
828-253-2796

Tri-County, TN 423-467-840
 Knoxville, TN 865-946-1900
 Spartanburg, SC 864-574-4775
 Charleston, SC 843-974-5600
 Hendersonville, NC 828-253-2796
 Charlotte, NC 704-357-0488
 Boone, NC 828-355-9933

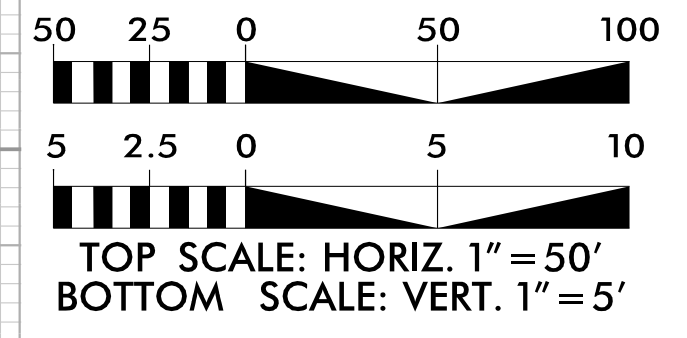
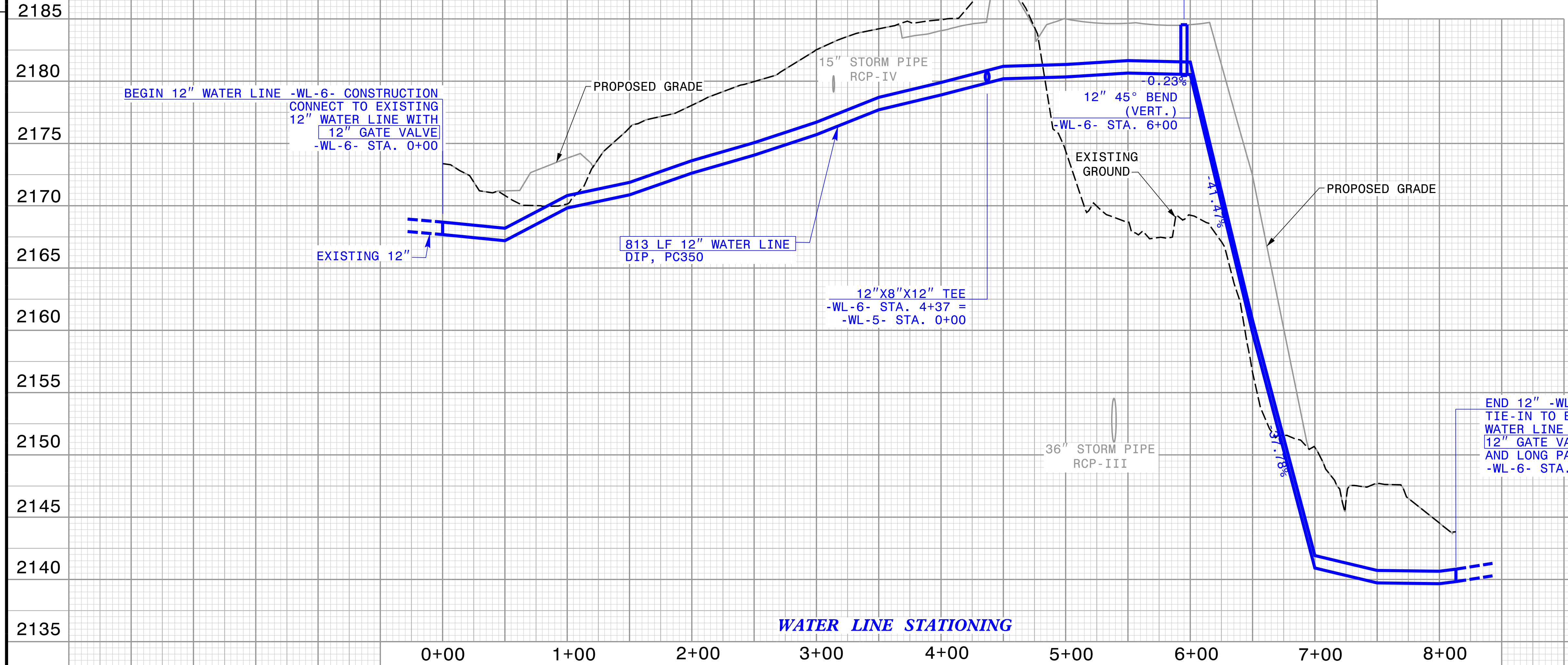
Copyright © 2019 Vaughn & Melton, Inc. All Rights Reserved

8-20-19

WATER LINE -WL-6- PROFILE

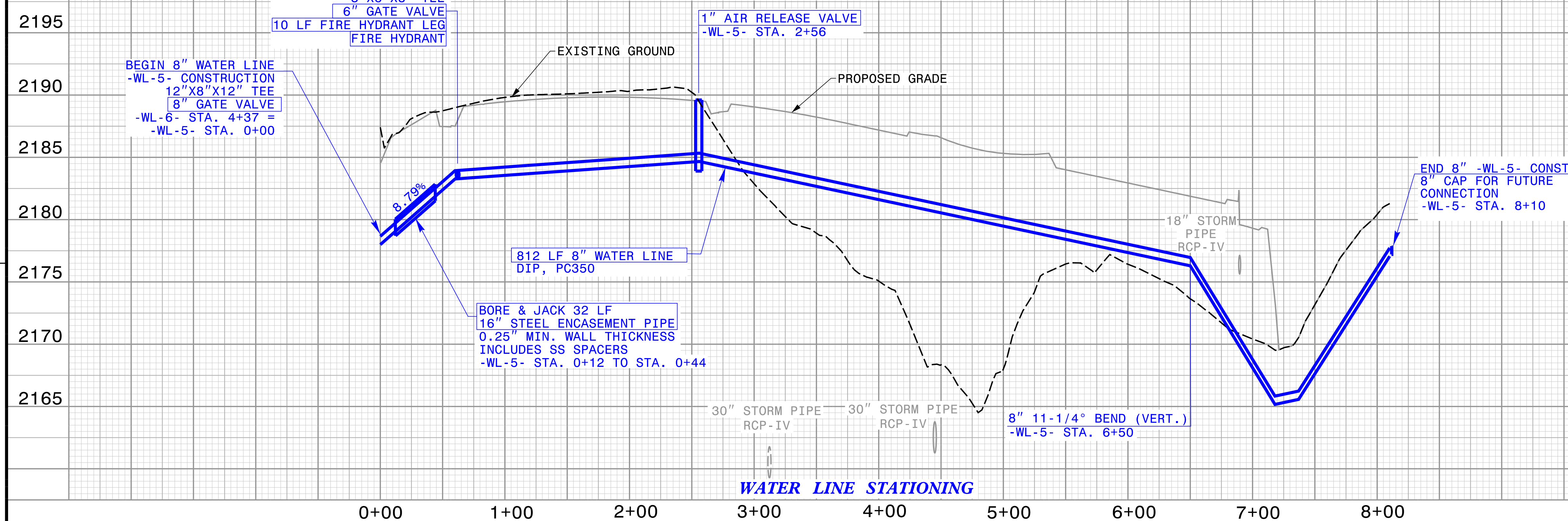
HENDERSON COUNTY

PROJECT REFERENCE NO. I-4400BB	SHEET NO. UC-22A
DESIGNED BY: CCC	
DRAWN BY: CCC	
CHECKED BY: SSD	
APPROVED BY: DWH	
REVISED: 8-20-19	
NORTH CAROLINA DEPARTMENT OF TRANSPORTATION UTILITIES ENGINEERING SEC. PHONE: (919) 707-6690 FAX: (919) 250-4151	
UTILITY CONSTRUCTION PLANS ONLY DOCUMENT NOT CONSIDERED FINAL UNTIL ALL SIGNATURES ARE COMPLETED	



WATER LINE STATIONING

WATER LINE -WL-5- PROFILE

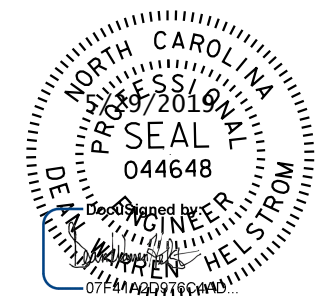


WATER LINE STATIONING

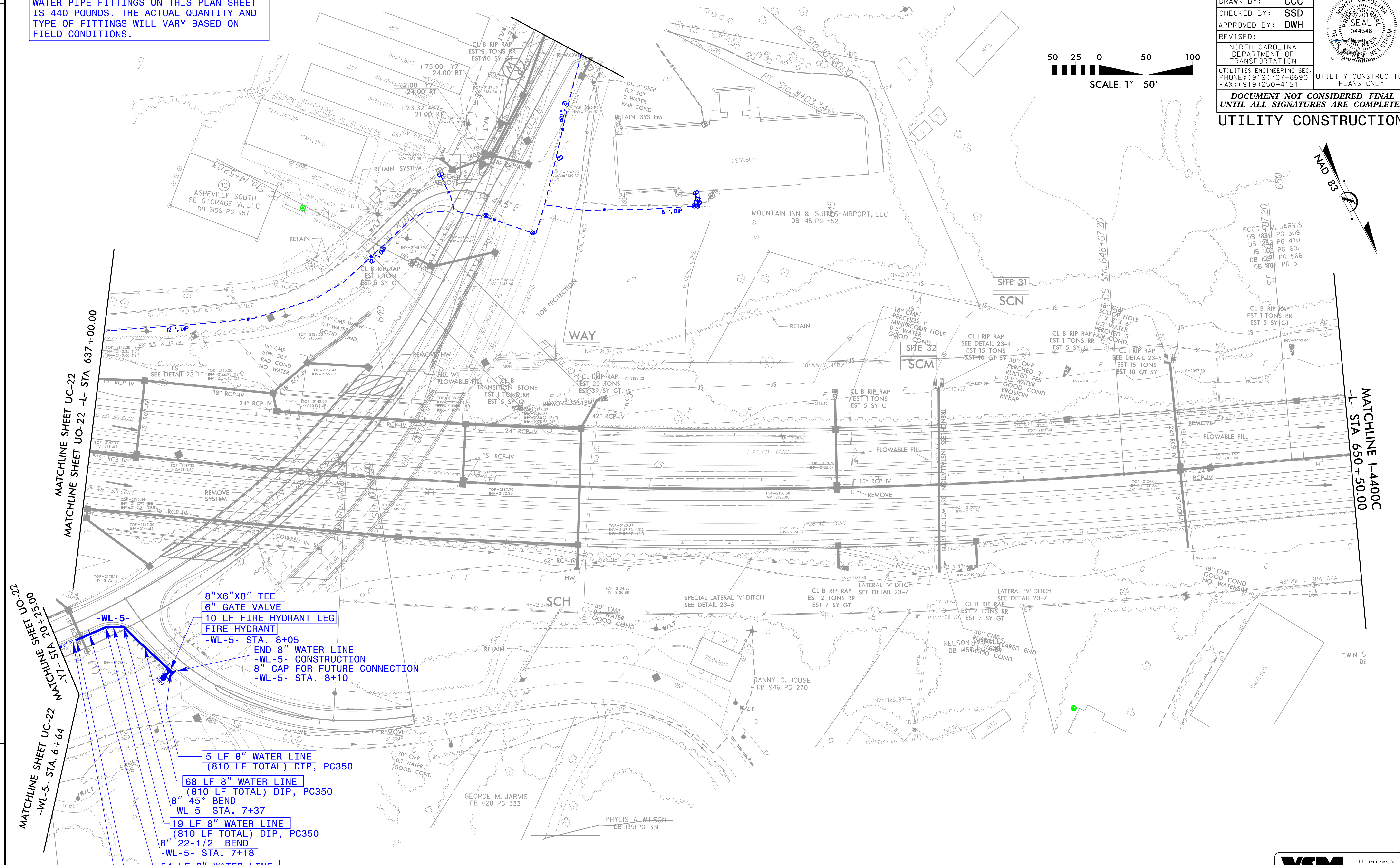
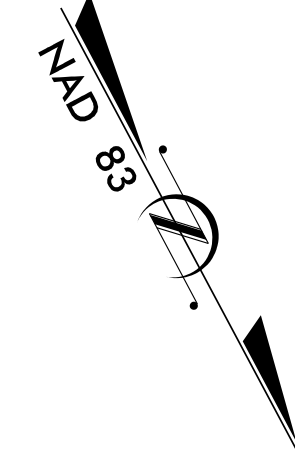
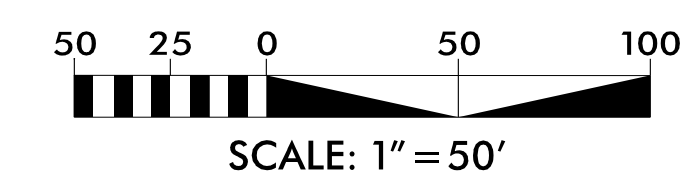
Vaughn & Melton
Consulting Engineers

Asheville, NC 828-253-2796
 Charlotte, NC 704-351-0488
 Knoxville, TN 423-467-8401
 Spartanburg, SC 864-574-4775
 Charleston, SC 843-974-9650
 Indianapolis, IN 606-248-6600
 Atlanta, GA 770-627-3509

Copyright © 2019 Vaughn & Melton, Inc. All Rights Reserved.

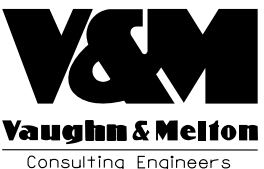
PROJECT REFERENCE NO.	SHEET NO.
I-4400BB	UC-23
DESIGNED BY: CCC	
DRAWN BY: CCC	
CHECKED BY: SSD	
APPROVED BY: DWH	
REVISED:	UTILITY CONSTRUCTION PLANS ONLY
NORTH CAROLINA DEPARTMENT OF TRANSPORTATION UTILITIES ENGINEERING SEC. PHONE: (919) 707-6690 FAX: (919) 250-4151	
DOCUMENT NOT CONSIDERED FINAL UNTIL ALL SIGNATURES ARE COMPLETED	
UTILITY CONSTRUCTION	

THE ESTIMATED QUANTITY OF DUCTILE IRON WATER PIPE FITTINGS ON THIS PLAN SHEET IS 440 POUNDS. THE ACTUAL QUANTITY AND TYPE OF FITTINGS WILL VARY BASED ON FIELD CONDITIONS.



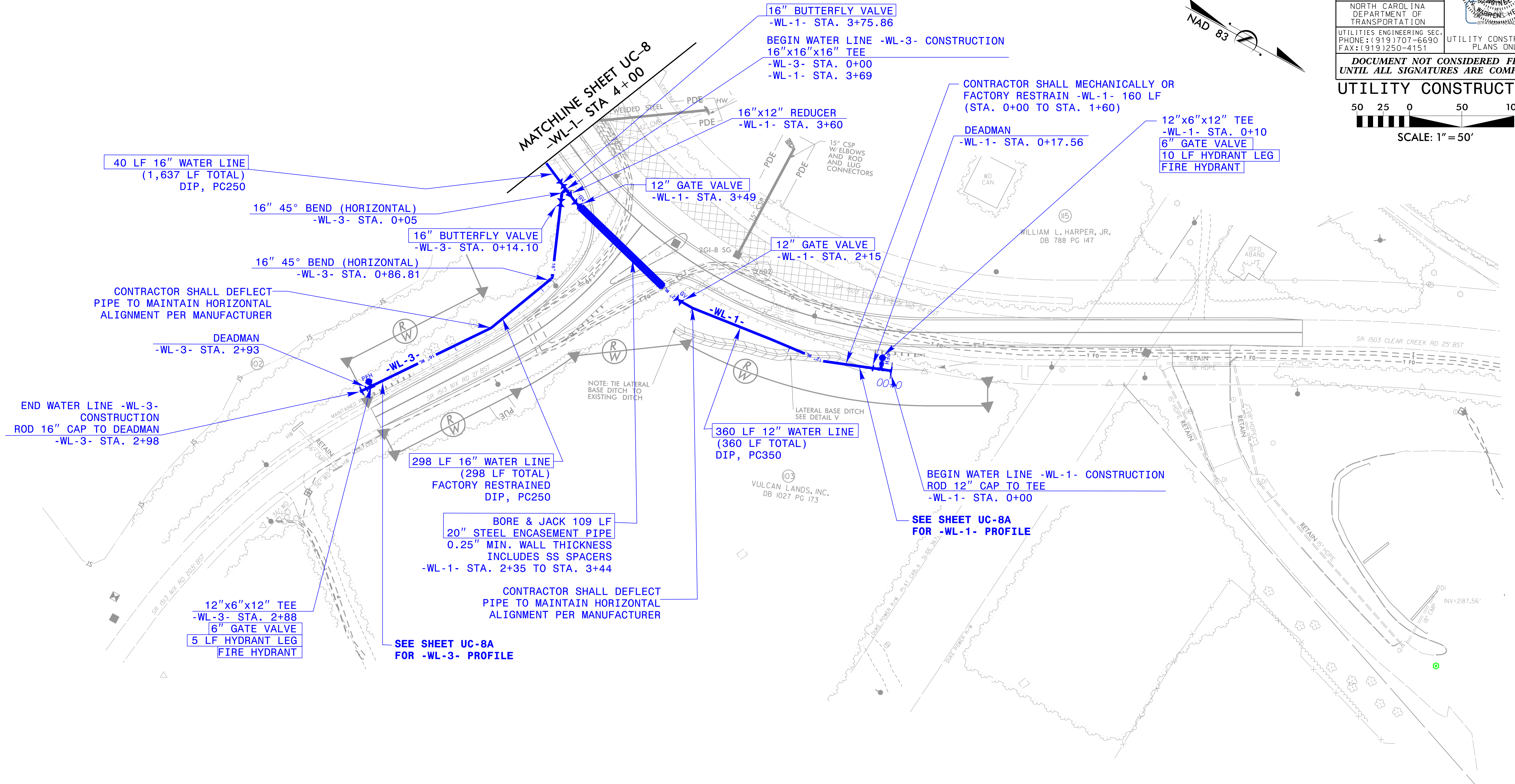
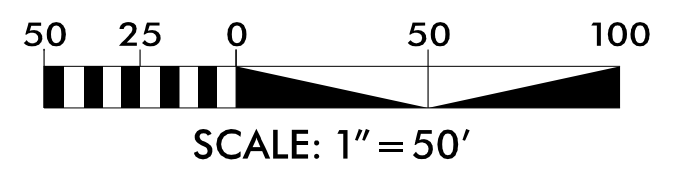
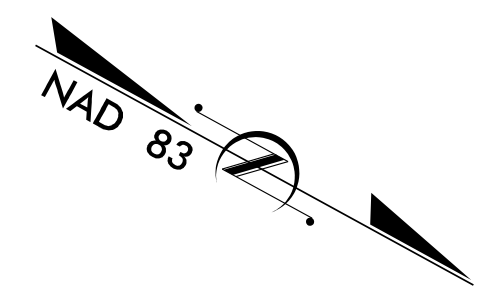
- 8"X6"X8" TEE
- 6" GATE VALVE
- 10 LF FIRE HYDRANT LEG
- FIRE HYDRANT
- WL-5- STA. 8+05
- END 8" WATER LINE
- WL-5- CONSTRUCTION
- 8" CAP FOR FUTURE CONNECTION
- WL-5- STA. 8+10
- 5 LF 8" WATER LINE (810 LF TOTAL) DIP, PC350
- 68 LF 8" WATER LINE (810 LF TOTAL) DIP, PC350
- 8" 45° BEND
- WL-5- STA. 7+37
- 19 LF 8" WATER LINE (810 LF TOTAL) DIP, PC350
- 8" 22-1/2° BEND
- WL-5- STA. 7+18
- 54 LF 8" WATER LINE (810 LF TOTAL) DIP, PC350
- CONTRACTOR SHALL DEFLECT PIPE TO MAINTAIN HORIZONTAL ALIGNMENT PER MANUFACTURER
- SEE SHEET UC-22A FOR -WL-5- PROFILE

5/17/2019 14:53:31 PM V:\Asheville\transportation\I-4400BB\Utilities\Design\I-4400BB_UT_SHEET_23.dgn User:dr-dawson



Trilites, TN 423-467-8401
 Knoxville, TN 865-946-1900
 Spartanburg, SC 864-574-4775
 Charleston, SC 843-974-5650
 Indianapolis, IN 606-248-6600
 Charlotte, NC 704-357-0488
 Boone, NC 828-253-2796
 Atlanta, GA 770-627-3509
 Copyright © 2019 Vaughn & Melton, Inc. All Rights Reserved

PROJECT REFERENCE NO.	SHEET NO.
I-4400BB	UC-26
DESIGNED BY: CCC	
DRAWN BY: CCC	
CHECKED BY: SSD	
APPROVED BY: DWH	
REVISED:	
NORTH CAROLINA DEPARTMENT OF TRANSPORTATION UTILITIES ENGINEERING SEC. PHONE: (919) 707-6690 FAX: (919) 250-4151	
UTILITY CONSTRUCTION PLANS ONLY DOCUMENT NOT CONSIDERED FINAL UNTIL ALL SIGNATURES ARE COMPLETED	



40 LF 16" WATER LINE
(1,637 LF TOTAL)
DIP, PC250

16" 45° BEND (HORIZONTAL)
-WL-3- STA. 0+05

16" BUTTERFLY VALVE
-WL-3- STA. 0+14.10

16" 45° BEND (HORIZONTAL)
-WL-3- STA. 0+86.81

CONTRACTOR SHALL DEFLECT
PIPE TO MAINTAIN HORIZONTAL
ALIGNMENT PER MANUFACTURER

DEADMAN
-WL-3- STA. 2+93

END WATER LINE -WL-3-
CONSTRUCTION
ROD 16" CAP TO DEADMAN
-WL-3- STA. 2+98

298 LF 16" WATER LINE
(298 LF TOTAL)
FACTORY RESTRAINED
DIP, PC250

BORE & JACK 109 LF
20" STEEL ENCASEMENT PIPE
0.25" MIN. WALL THICKNESS
INCLUDES SS SPACERS
-WL-1- STA. 2+35 TO STA. 3+44

CONTRACTOR SHALL DEFLECT
PIPE TO MAINTAIN HORIZONTAL
ALIGNMENT PER MANUFACTURER

SEE SHEET UC-8A
FOR -WL-3- PROFILE

16" BUTTERFLY VALVE
-WL-1- STA. 3+75.86

BEGIN WATER LINE -WL-3- CONSTRUCTION
16"x16"x16" TEE
-WL-3- STA. 0+00
-WL-1- STA. 3+69

16"x12" REDUCER
-WL-1- STA. 3+60

12" GATE VALVE
-WL-1- STA. 3+49

12" GATE VALVE
-WL-1- STA. 2+15

CONTRACTOR SHALL MECHANICALLY OR
FACTORY RESTRAIN -WL-1- 160 LF
(STA. 0+00 TO STA. 1+60)

DEADMAN
-WL-1- STA. 0+17.56

12"x6"x12" TEE
-WL-1- STA. 0+10
6" GATE VALVE
10 LF HYDRANT LEG
FIRE HYDRANT

360 LF 12" WATER LINE
(360 LF TOTAL)
DIP, PC350

BEGIN WATER LINE -WL-1- CONSTRUCTION
ROD 12" CAP TO TEE
-WL-1- STA. 0+00

SEE SHEET UC-8A
FOR -WL-1- PROFILE

THE ESTIMATED QUANTITY OF DUCTILE IRON
WATER PIPE FITTINGS ON THIS PLAN SHEET
IS 3,420 POUNDS. THE ACTUAL QUANTITY AND
TYPE OF FITTINGS WILL VARY BASED ON
FIELD CONDITIONS.