

**This electronic collection of documents is provided
for the convenience of the user
and is Not a Certified Document –**

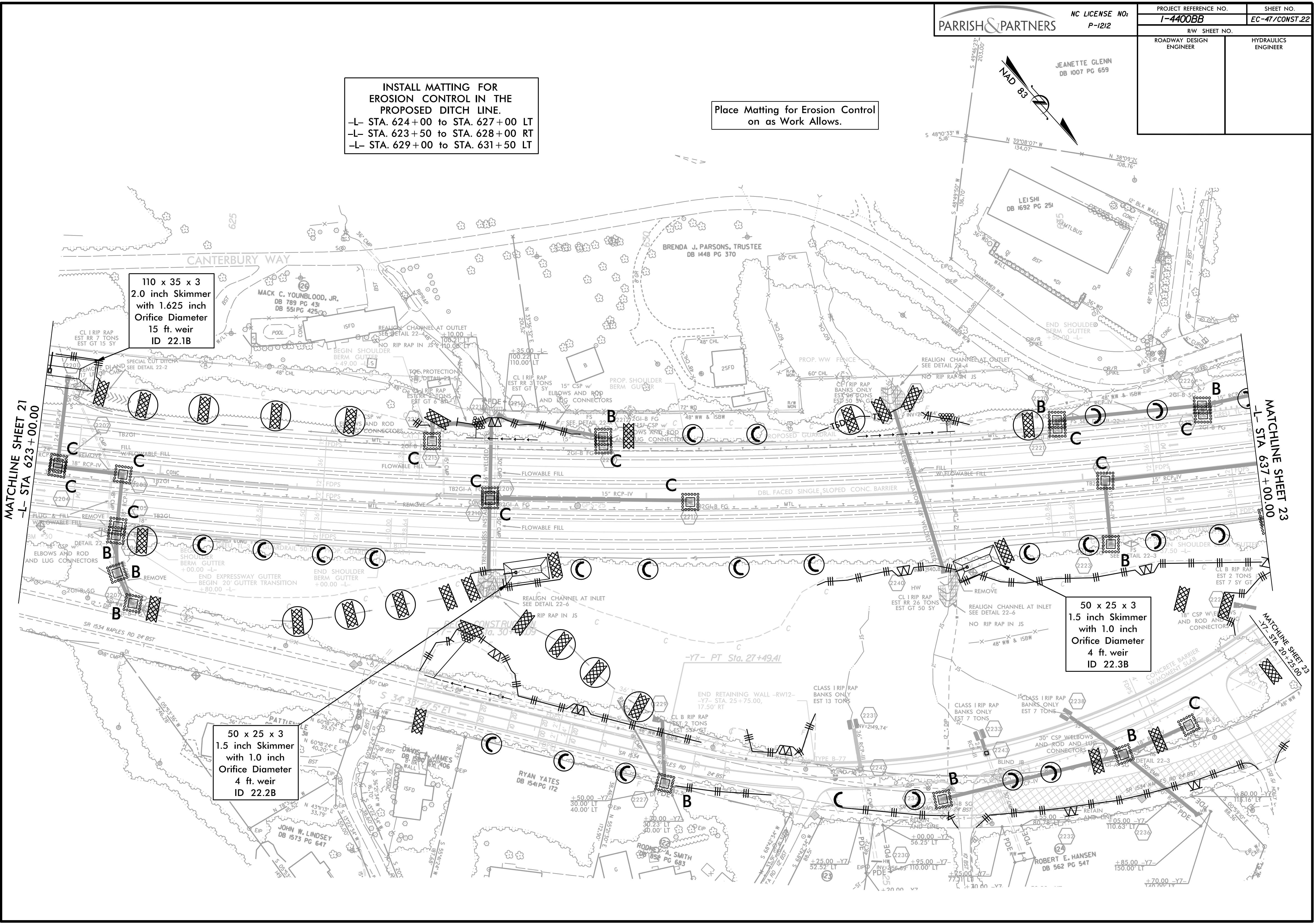
**The documents contained herein were originally issued
and sealed by the individuals whose names and license
numbers appear on each page, on the dates appearing
with their signature on that page.**

**This file or an individual page
shall not be considered a certified document.**

PROJECT REFERENCE NO. 1-4400BB	SHEET NO. EC-47/CONST.22
RW SHEET NO.	
ROADWAY DESIGN ENGINEER	HYDRAULICS ENGINEER

INSTALL MATTING FOR EROSION CONTROL IN THE PROPOSED DITCH LINE.
 -L- STA. 624+00 to STA. 627+00 LT
 -L- STA. 623+50 to STA. 628+00 RT
 -L- STA. 629+00 to STA. 631+50 LT

Place Matting for Erosion Control on as Work Allows.



**110 x 35 x 3
2.0 inch Skimmer
with 1.625 inch
Orifice Diameter
15 ft. weir
ID 22.1B**

**50 x 25 x 3
1.5 inch Skimmer
with 1.0 inch
Orifice Diameter
4 ft. weir
ID 22.3B**

**50 x 25 x 3
1.5 inch Skimmer
with 1.0 inch
Orifice Diameter
4 ft. weir
ID 22.2B**

MATCHLINE SHEET 21
-L- STA 623+00.00

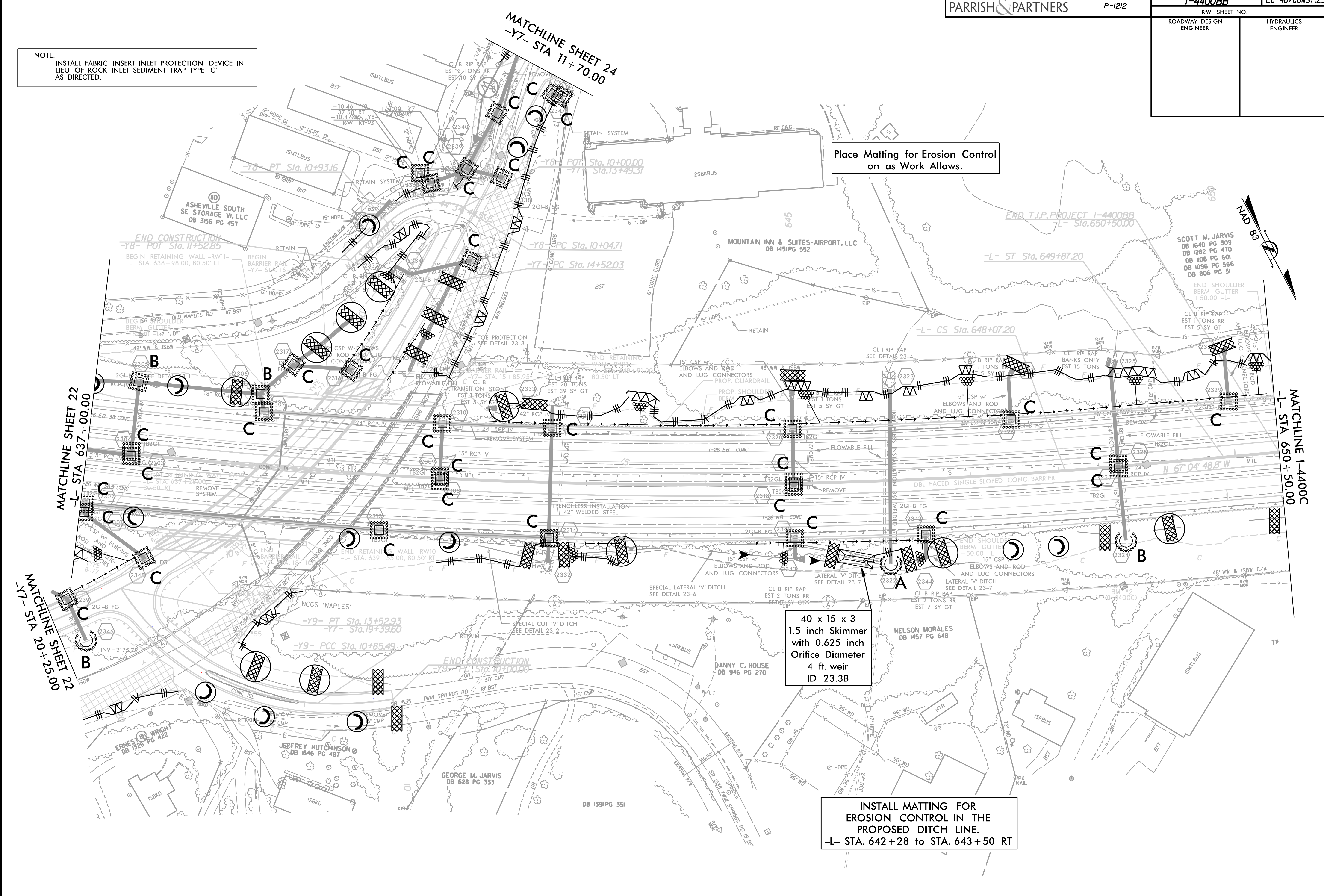
MATCHLINE SHEET 23
-L- STA 637+00.00

MATCHLINE SHEET 23
-L- STA 20+25.00

\$\$\$SYTIME\$\$\$
 \$\$\$USERNAME\$\$\$
 \$\$\$SCALE\$\$\$
 \$\$\$ENVIRONMENT\$\$\$

PROJECT REFERENCE NO. I-4400BB	SHEET NO. EC-48/CONST.23
RW SHEET NO.	
ROADWAY DESIGN ENGINEER	HYDRAULICS ENGINEER

NOTE:
INSTALL FABRIC INSERT INLET PROTECTION DEVICE IN LIEU OF ROCK INLET SEDIMENT TRAP TYPE 'C' AS DIRECTED.



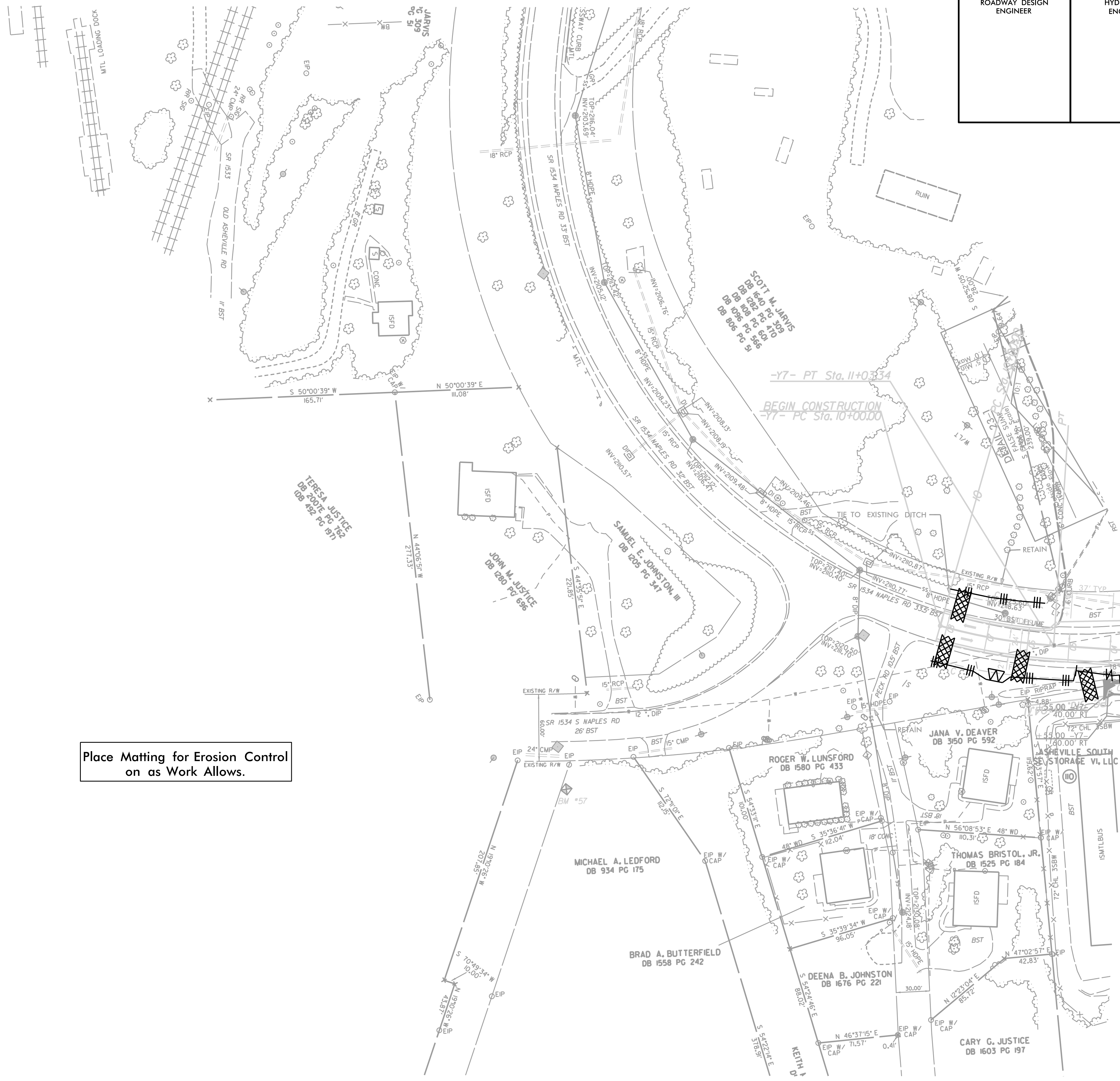
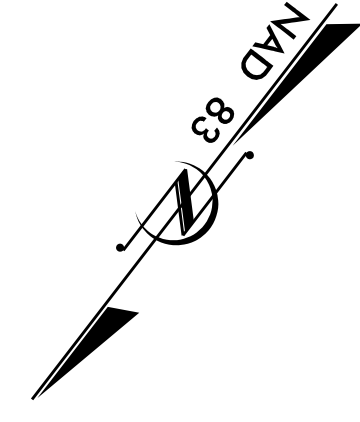
Place Matting for Erosion Control on as Work Allows.

40 x 15 x 3
1.5 inch Skimmer
with 0.625 inch
Orifice Diameter
4 ft. weir
ID 23.3B

INSTALL MATTING FOR
EROSION CONTROL IN THE
PROPOSED DITCH LINE.
-L- STA. 642+28 to STA. 643+50 RT

\$\$\$SYTIME\$\$\$
\$\$\$USERNAME\$\$\$
\$\$\$SCALE\$\$\$
\$\$\$ENVIRONMENT\$\$\$

PROJECT REFERENCE NO.	SHEET NO.
1-4400BB	EC-49/CONST.24
RW SHEET NO.	
ROADWAY DESIGN ENGINEER	HYDRAULICS ENGINEER



Place Matting for Erosion Control
on as Work Allows.

MATCHLINE SHEET 23
-Y7- STA 11 + 70.00

\$\$\$SYTIME\$\$\$
\$\$\$DRAWING\$\$\$
\$\$\$USERNAME\$\$\$
\$\$\$SCALE\$\$\$
\$\$\$ENVIRONMENT\$\$\$

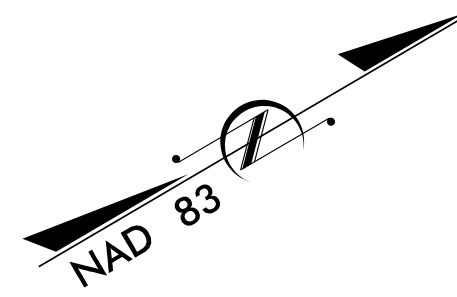
V&M
Vaughn & Melton
 Consulting Engineers

Asheville,
 North Carolina
 828-253-2796

Boone, NC 828-355-9933
 Tri-Cities, TN 423-467-8401
 Knoxville, TN 865-546-5800
 Spartanburg, SC 864-574-4775
 Charleston, SC 843-974-5650
 Middlesboro, KY 606-248-6600
 Raleigh, NC 919-977-9455
 Charlotte, NC 704-357-0488
 Atlanta, GA 770-627-3590

Copyright © 2006 Vaughn & Melton, Inc. All Rights Reserved

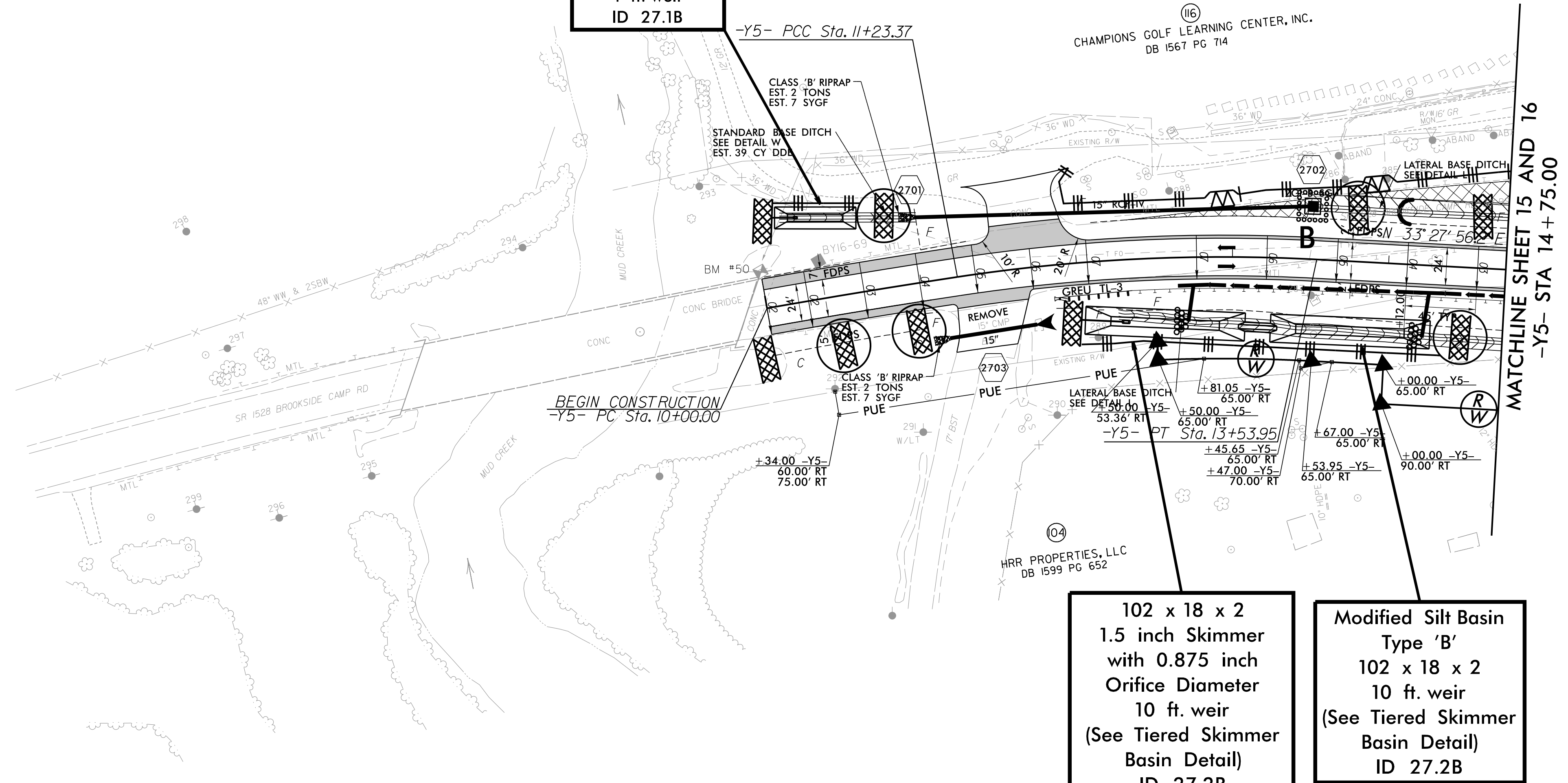
PROJECT REFERENCE NO.	SHEET NO.
1-4400BB	EC-52/CONST.27
RW SHEET NO.	
ROADWAY DESIGN ENGINEER	HYDRAULICS ENGINEER



Place Matting for Erosion Control on Slopes as Work Allows.

52 x 14 x 3
 1.5 inch Skimmer
 with 0.625 inch
 Orifice Diameter
 4 ft. weir
 ID 27.1B

CHAMPIONS GOLF LEARNING CENTER, INC.
 DB 1567 PG 714



MATCHLINE SHEET 15 AND 16
 -Y5- STA 14+75.00

102 x 18 x 2
 1.5 inch Skimmer
 with 0.875 inch
 Orifice Diameter
 10 ft. weir
 (See Tiered Skimmer
 Basin Detail)
 ID 27.2B

Modified Silt Basin
 Type 'B'
 102 x 18 x 2
 10 ft. weir
 (See Tiered Skimmer
 Basin Detail)
 ID 27.2B

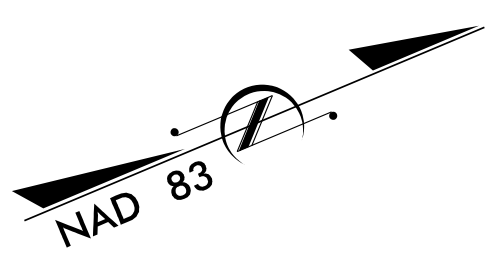
6/1/2016 1:49:44 PM
 V:\Asheville\transportation\31834-01\1-4400BB\Erosion Control\Sheets\14400BB_Env_EC-42.dgn
 I:\asheville\transportation\31834-01\1-4400BB\Erosion Control\Sheets\14400BB_Env_EC-42.dgn

Asheville, North Carolina
828-253-2796

Boone, NC
 Tri-Cities, TN
 Knoxville, TN
 Spartanburg, SC
 Charleston, SC
 Middlesboro, KY
 Raleigh, NC
 Charlotte, NC
 Atlanta, GA

Copyright © 2006 Vaughn & Mellon, Inc. All Rights Reserved.

PROJECT REFERENCE NO.	SHEET NO.
1-4400BB	EC-53/CONST.28
RW SHEET NO.	
ROADWAY DESIGN ENGINEER	HYDRAULICS ENGINEER



Place Matting for Erosion Control on Slopes as Work Allows.

MATCHLINE SHEET 16
-Y5- STA 23 + 50.00

6/14/2016 2:29:19 PM V:\Asheville\transportation\318334-01\1-4400BB\Erosion_Contr\Sheets\14400BB_Env_EC-43.dgn

