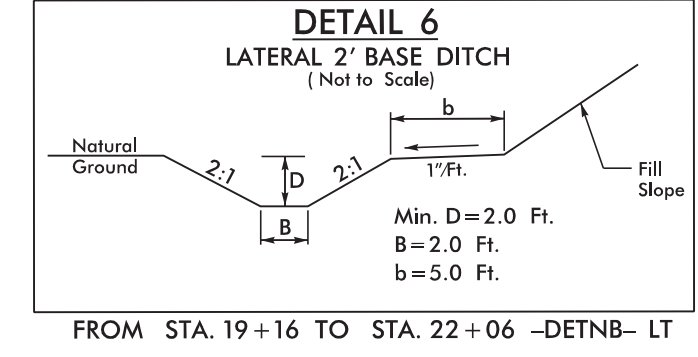


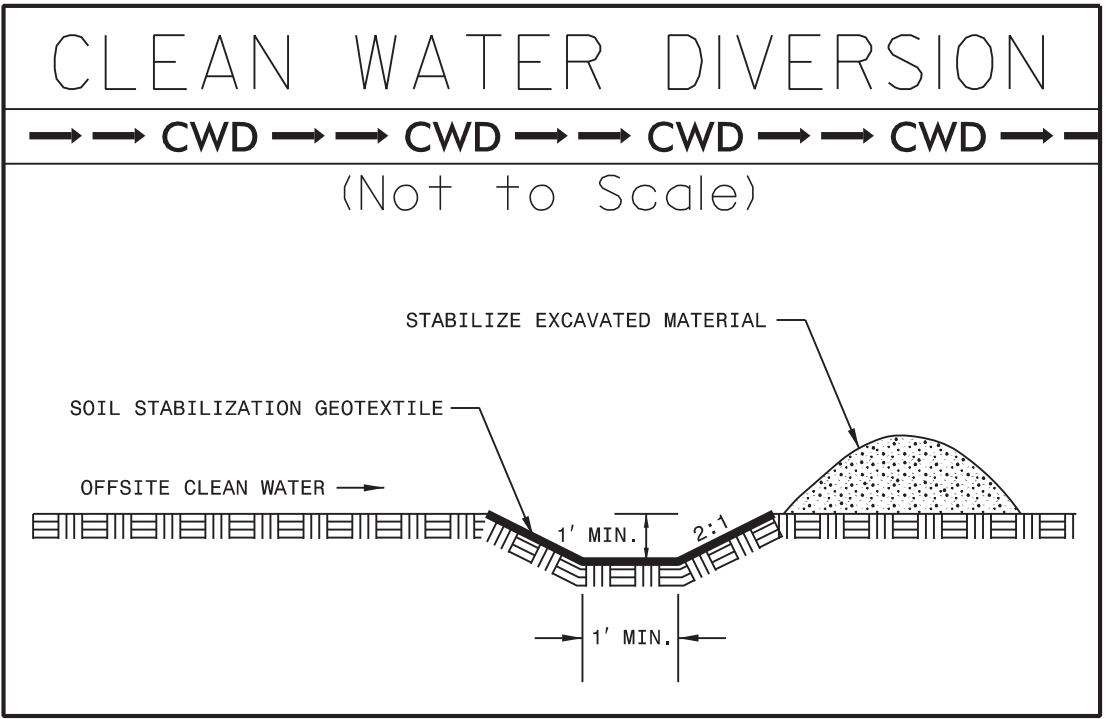
8/17/99

-DETNB-	
PI Sta 26+52.76	PI Sta 29+14.74
$\Delta = 12' 30" 43.8" (RT)$	$\Delta = 12' 30" 43.6" (LT)$
D = 4' 46" 33.7"	D = 4' 46" 33.7"
L = 261.98'	L = 261.98'
T = 131.55'	T = 131.55'
R = 1,200.00'	R = 1,200.00'
SE = 0.04	SE = 0.04
ROFF = 154'	ROFF = 154'
DS = 55 MPH	DS = 55 MPH

NOTE:
UTILIZE TEMPORARY SEDIMENT BASIN OR SPECIAL STILLING BASIN(S) AS STILLING BASIN WHERE APPLICABLE.



PROJECT REFERENCE NO.	SHEET NO.
B-5389	EC-9/CONST.7
RW SHEET NO.	
ROADWAY DESIGN ENGINEER	HYDRAULICS ENGINEER
AMT A. MORTON THOMAS AND ASSOCIATES, INC. CONSULTING ENGINEERS 6131 FALLS OF THE ROADS, SUITE 106, RALEIGH, NC 27609 (919) 851-9889 FAX (919) 851-5661 EMAIL: AMT@AMTENGINEERING.COM NCBELS LICENSE # F-1049	

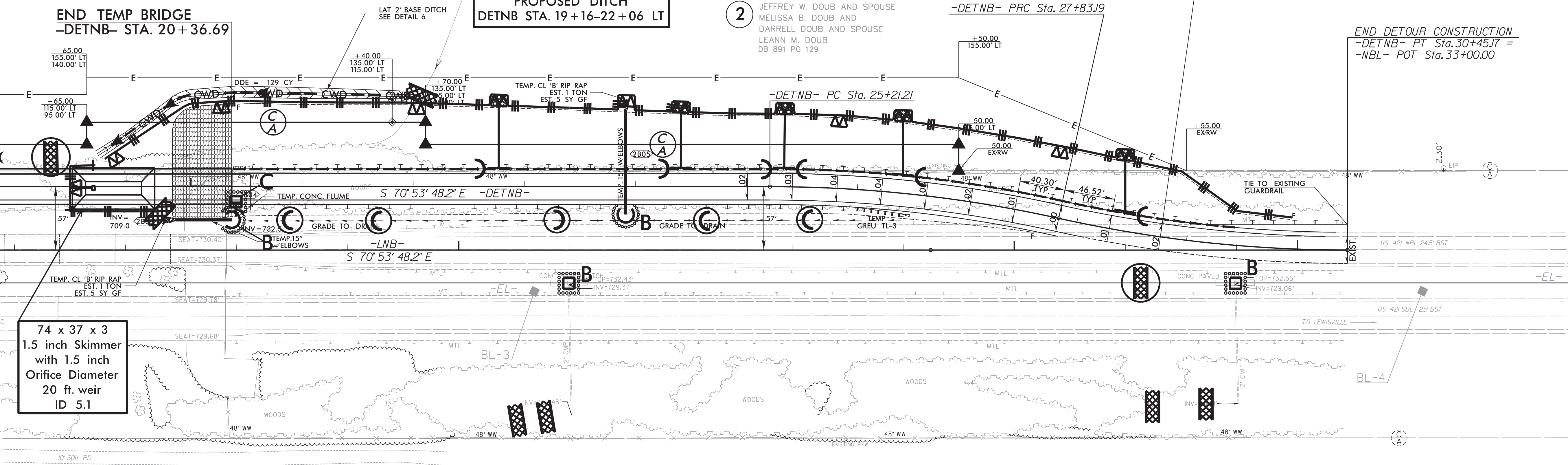


NOTE:
PLACE TEMPORARY ROCK SEDIMENT DAMS TYPE - B AND TEMPORARY ROCK SILT CHECKS TYPE - A AT DRAINAGE OUTLETS.

DETOUR

END -DETNB- GRADE
-DETNB- STA. 28+76.22 =
-NBL- STA. 31+31.55 11.88' LT

MATCHLINE SEE SHEET 6 -DETNB- 18+00.00



74 x 37 x 3
1.5 inch Skimmer
with 1.5 inch
Orifice Diameter
20 ft. weir
ID 5.1

2 JEFFREY W. DOUB AND SPOUSE
MELISSA B. DOUB AND
DARRELL DOUB AND SPOUSE
LEANN M. DOUB
DB 891 PG 129

DARRELL DOUB AND WIFE
LEANN M. DOUB
DB 1139 PG 533

REVISIONS

6/16/2018 X:\Reigh\114-783C - NCDOT Bridge Group 0 B-5389\05-CAD\CAD\B5389\Design\B5389_EC_9.dgn