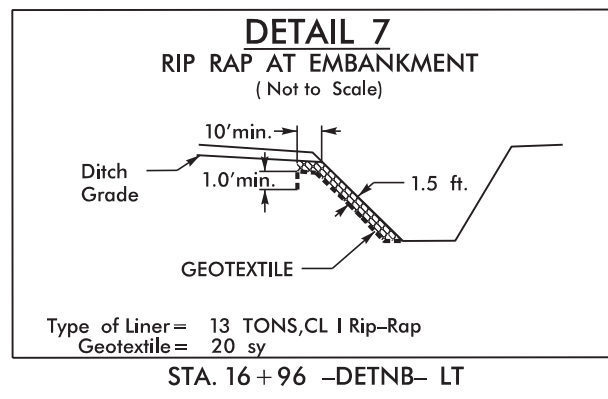


# DETOUR



-DETNB-

PI Sta 11+46.99	PI Sta 14+20.69
$\Delta = 13^\circ 58' 02.2''$ (LT)	$\Delta = 12^\circ 11' 59.9''$ (RT)
D = 4' 46' 33.7"	D = 4' 46' 33.7"
L = 292.45'	L = 255.44'
T = 146.99'	T = 128.24'
R = 1,200.00'	R = 1,200.00'
SE = 0.04	SE = 0.04
ROFF = 154'	ROFF = 154'
DS = 55 MPH	DS = 55 MPH

PROJECT REFERENCE NO. <b>B-5389</b>	SHEET NO. <b>EC-8/CONST.6</b>
RW SHEET NO.	
ROADWAY DESIGN ENGINEER	HYDRAULICS ENGINEER
 <b>AMT</b> A. MORTON THOMAS AND ASSOCIATES, INC. CONSULTING ENGINEERS 6131 FALLS OF THE RIVER ROAD, SUITE 106, RALEIGH, NC 27609 (919) 851-9889 FAX (919) 851-5668 EMAIL: AMT@AMTENGINEERING.COM NCBELS LICENSE # F-1049	

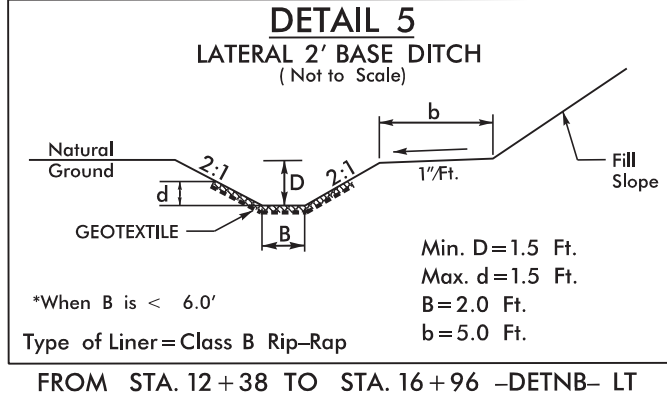
**NOTE:**  
UTILIZE TEMPORARY SEDIMENT BASIN OR SPECIAL STILLING BASIN(S) AS STILLING BASIN WHERE APPLICABLE.

**BEGIN -DETNB- GRADE**  
-DETNB- STA. 11+86.96 =  
-NBL- STA. 14+49.08 11.90' LT

**NOTE:**  
PLACE TEMPORARY ROCK SEDIMENT DAMS TYPE - B AND TEMPORARY ROCK SILT CHECKS TYPE - A AT DRAINAGE OUTLETS.

**BEGIN CONSTRUCTION**  
-DETNB- PC Sta. 10+00.00 =  
-NBL- POC Sta. 12+62.50

**1** WILLIAM STEVEN CLODFELTER  
AND WIFE  
JESSIE J. CLODFELTER  
DB 291 PG 341



**Place Temporary Rock Silt Checks Type-A at Drainage Outlets**

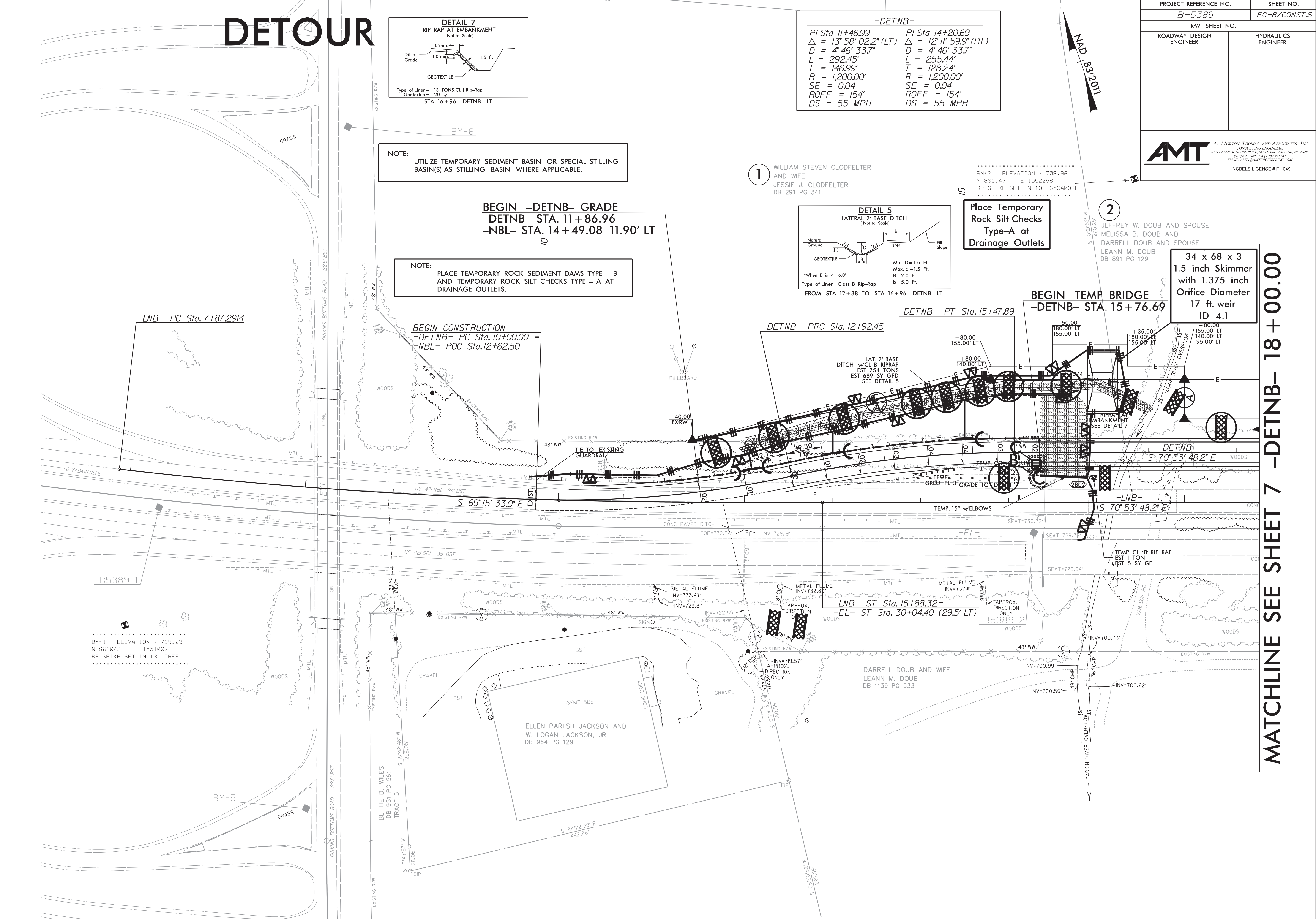
**2** JEFFREY W. DOUB AND SPOUSE  
MELISSA B. DOUB AND  
DARRELL DOUB AND SPOUSE  
LEANN M. DOUB  
DB 891 PG 129

**34 x 68 x 3**  
**1.5 inch Skimmer**  
with 1.375 inch  
Orifice Diameter  
17 ft. weir  
ID 4.1

**BEGIN TEMP BRIDGE**  
-DETNB- STA. 15+76.69

REVISIONS

8/17/2019  
X:\Projects\14-783C - NCDOT Bridge Group\0 B-5389\CAD\B5389\Environmental\Design\B5389\_EC\_8.dgn  
C:\Users\jgrouse



**MATCHLINE SEE SHEET 7 -DETNB- 18+00.00**