
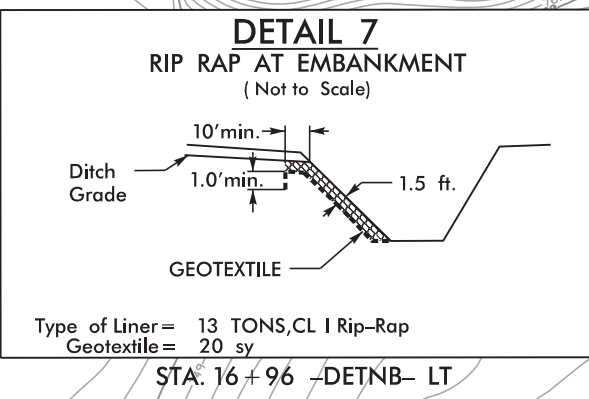


PROJECT REFERENCE NO. B-5389	SHEET NO. EC-6/CONST.6
RW SHEET NO.	
ROADWAY DESIGN ENGINEER	HYDRAULICS ENGINEER
 <b>A. MORTON THOMAS AND ASSOCIATES, INC.</b> CONSULTING ENGINEERS 6131 FALLS OF THE ROADS, SUITE 100, RALEIGH, NC 27609 (919) 851-9800 FAX (919) 851-5661 EMAIL: AMT@AMTENGINEERING.COM NCBELS LICENSE # F-1049	

# DETOUR



CLEARING AND GRUBBING  
EROSION CONTROL FOR  
CONSTRUCTION SHEET 6 (DETOUR)

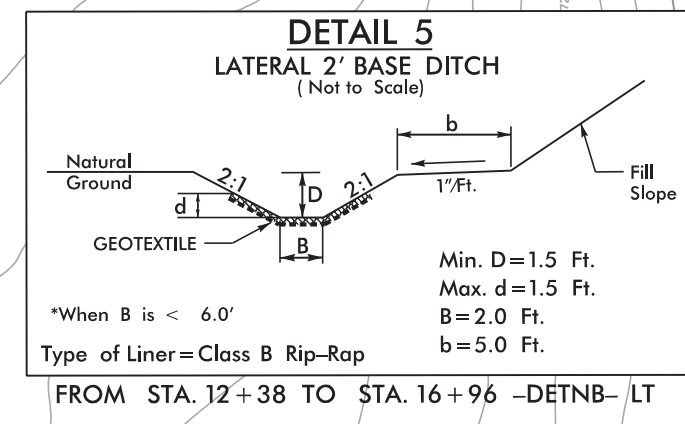
-DETNB-

PI Sta 11+46.99 Δ = 13° 58' 02.2" (LT) D = 4' 46" 33.7" L = 292.45' T = 146.99' R = 1,200.00' SE = 0.04 ROFF = 154' DS = 55 MPH	PI Sta 14+20.69 Δ = 12° 11' 59.9" (RT) D = 4' 46" 33.7" L = 255.44' T = 128.24' R = 1,200.00' SE = 0.04 ROFF = 154' DS = 55 MPH
---	---

NOTE:  
UTILIZE TEMPORARY SEDIMENT BASIN OR SPECIAL STILLING BASIN(S) AS STILLING BASIN WHERE APPLICABLE.

BEGIN -DETNB- GRADE  
-DETNB- STA. 11+86.96 =  
-NBL- STA. 14+49.08 11.90' LT

NOTE:  
PLACE TEMPORARY ROCK SEDIMENT DAMS TYPE - B  
AND TEMPORARY ROCK SILT CHECKS TYPE - A AT  
DRAINAGE OUTLETS.



Place Temporary  
Rock Silt Checks  
Type-A at  
Drainage Outlets

34 x 68 x 3  
1.5 inch Skimmer  
with 1.375 inch  
Orifice Diameter  
17 ft. weir  
ID 4.1

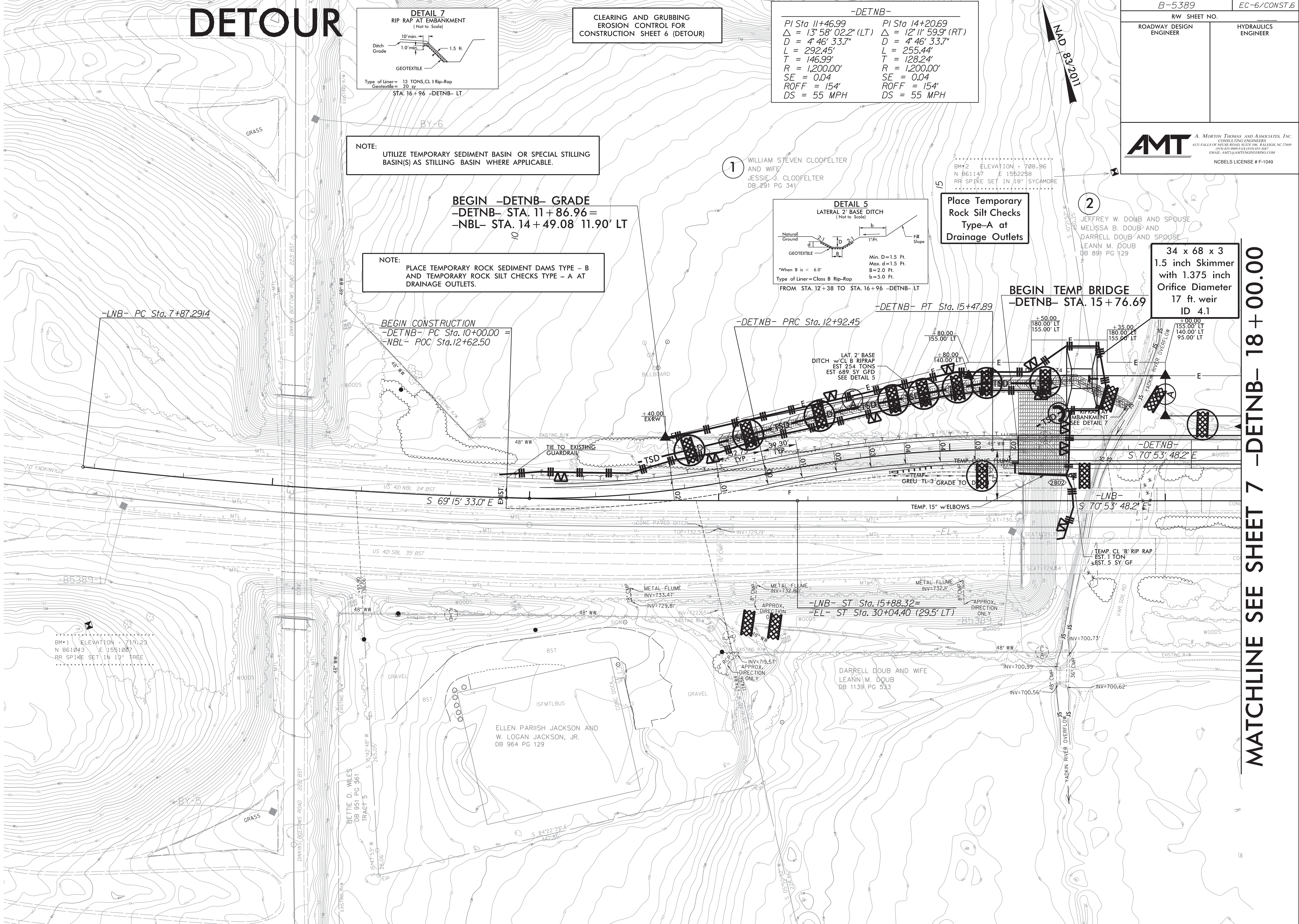
BEGIN TEMP BRIDGE  
-DETNB- STA. 15+76.69

-LNB- PC Sta. 7+87.2914

BEGIN CONSTRUCTION  
-DETNB- PC Sta. 10+00.00 =  
-NBL- POC Sta. 12+62.50

-DETNB- PRC Sta. 12+92.45

-DETNB- PT Sta. 15+47.89



REVISIONS

6/6/2019  
X:\Projects\114-783C - NCDOT Bridge Group 0 B-5389\05-CAD\B5389\_Env\Environmental\Design\B5389\_EC\_6.dgn  
C:\Users\jgrouse

MATCHLINE SEE SHEET 7 -DETNB- 18+00.00