


PROJECT REFERENCE NO.	SHEET NO.
B-5389	EC-4/CONST.4
RW SHEET NO.	
ROADWAY DESIGN ENGINEER	HYDRAULICS ENGINEER
 A. MORTON THOMAS AND ASSOCIATES, INC. CONSULTING ENGINEERS 4531 FALLS OF THE ROADS, SUITE 106, RALEIGH, NC 27609 (919) 851-9889 FAX (919) 851-5661 EMAIL: AMT@AMTENGINEERING.COM NCBELS LICENSE # F-1049	

FINAL DESIGN

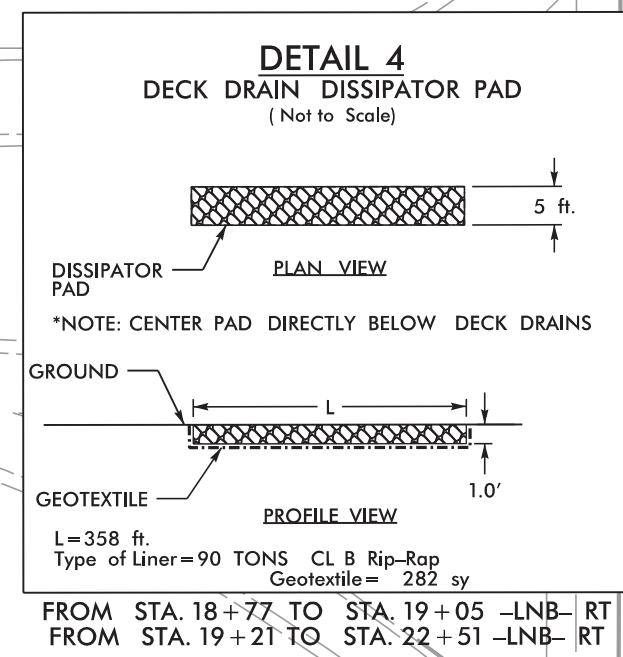
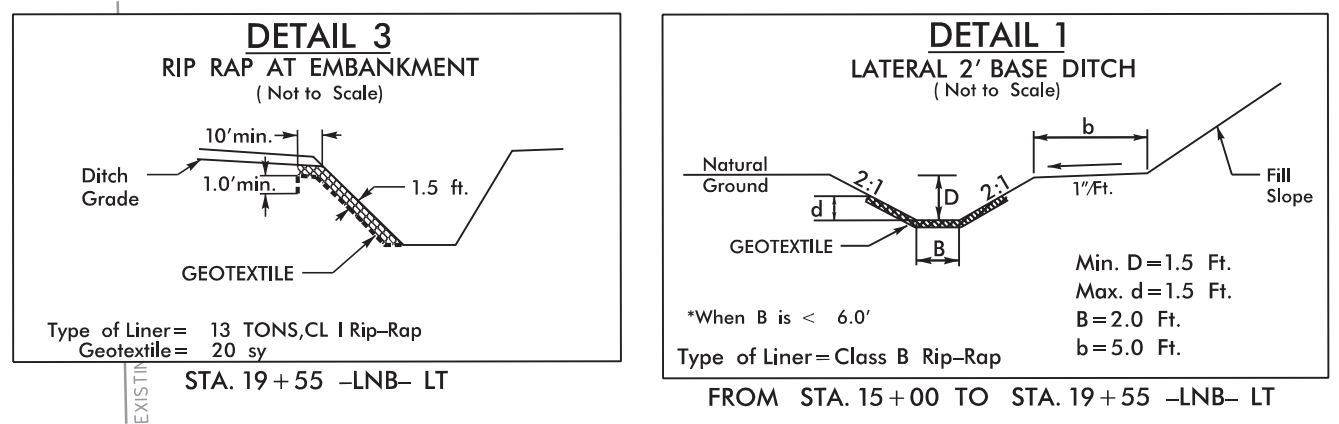
2 JEFFREY W. DOUB AND SPOUSE
MELISSA B. DOUB AND
DARRELL DOUB AND SPOUSE
LEANN M. DOUB
DB 891 PG 129

34 x 68 x 3
1.5 inch Skimmer
with 1.375 inch
Orifice Diameter
17 ft. weir
ID 4.1

Utilize Special Stilling Basin where applicable.

1 WILLIAM STEVEN CLODFELTER
AND WIFE
JESSIE J. CLODFELTER
DB 291 PG 341

BM*2 ELEVATION = 708.96
N 861147 E 1552258
RR SPIKE SET IN 18' SYCAMORE



NOTE: UTILIZE TEMPORARY SEDIMENT BASIN OR SPECIAL STILLING BASIN(S) AS STILLING BASIN WHERE APPLICABLE.

BEGIN TIP PROJECT B-5389
-LNB- STA. 12 + 62.50
BEGIN 3" OVERLAY

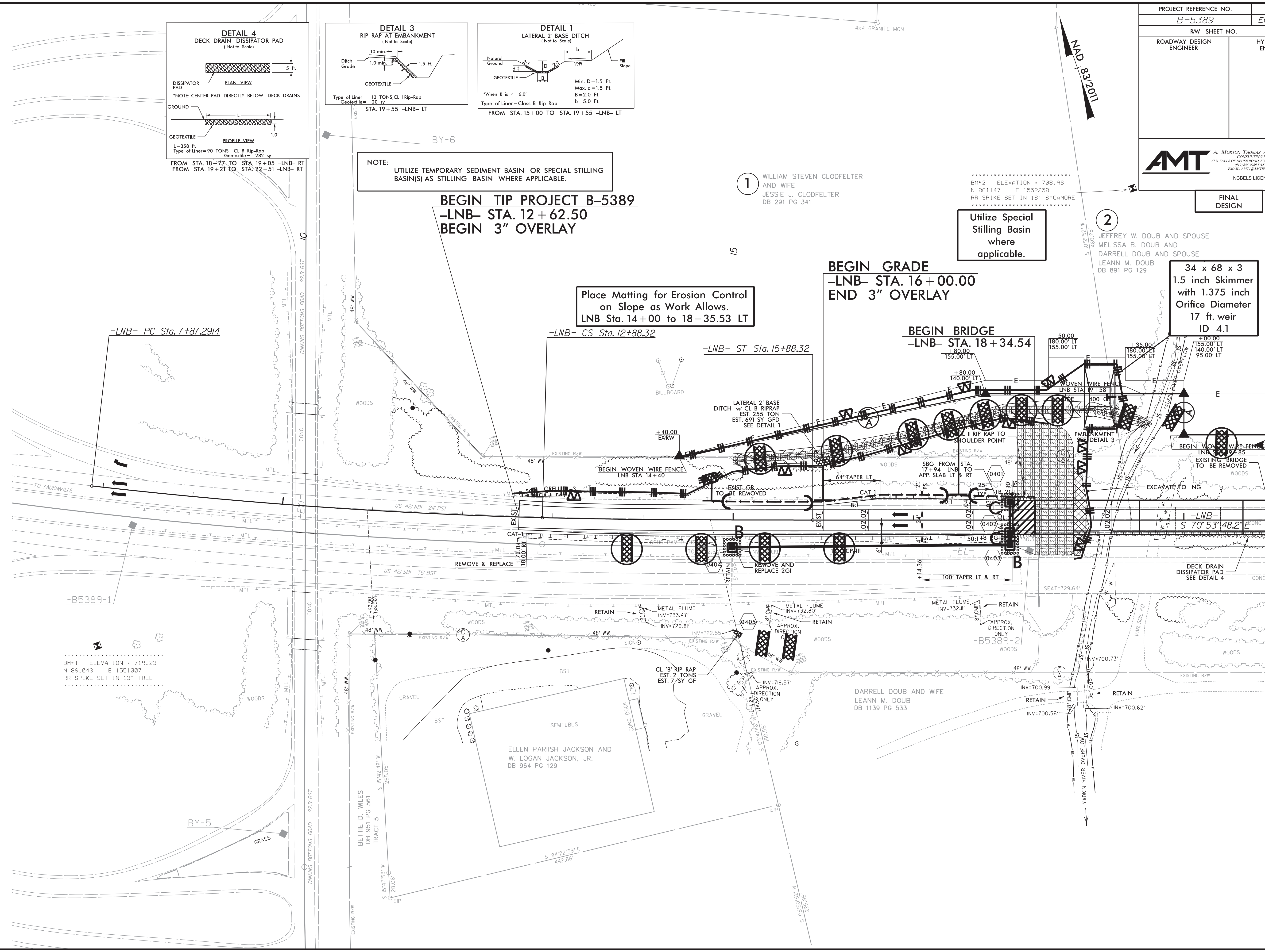
Place Matting for Erosion Control on Slope as Work Allows.
LNB Sta. 14 + 00 to 18 + 35.53 LT

BEGIN GRADE
-LNB- STA. 16 + 00.00
END 3" OVERLAY

BEGIN BRIDGE
-LNB- STA. 18 + 34.54

MATCHLINE SEE SHEET 5 -LNB- 21 + 00.00

8/17/99
 REVISIONS
 8/6/2019
 X:\Projects\14-783C - NCDOT Bridge Group 0 B-5389\CAD\B5389\Environmental\Design\B5389_EC_4.dgn
 8/6/2019
 X:\Projects\14-783C - NCDOT Bridge Group 0 B-5389\CAD\B5389\Environmental\Design\B5389_EC_4.dgn



BM*1 ELEVATION = 719.23
N 861043 E 1551007
RR SPIKE SET IN 13' TREE

DARRELL DOUB AND WIFE
LEANN M. DOUB
DB 1139 PG 533

ELLEN PARIISH JACKSON AND
W. LOGAN JACKSON, JR.
DB 964 PG 129

BY-5

BY-6