

**This electronic collection of documents is provided
for the convenience of the user
and is Not a Certified Document –**

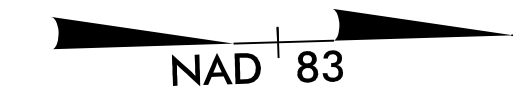
**The documents contained herein were originally issued
and sealed by the individuals whose names and license
numbers appear on each page, on the dates appearing
with their signature on that page.**

**This file or an individual page
shall not be considered a certified document.**

Place Natural Fiber Mesh on Slopes Adjacent to Permitted Wetlands as Work Allows on NFS Lands.

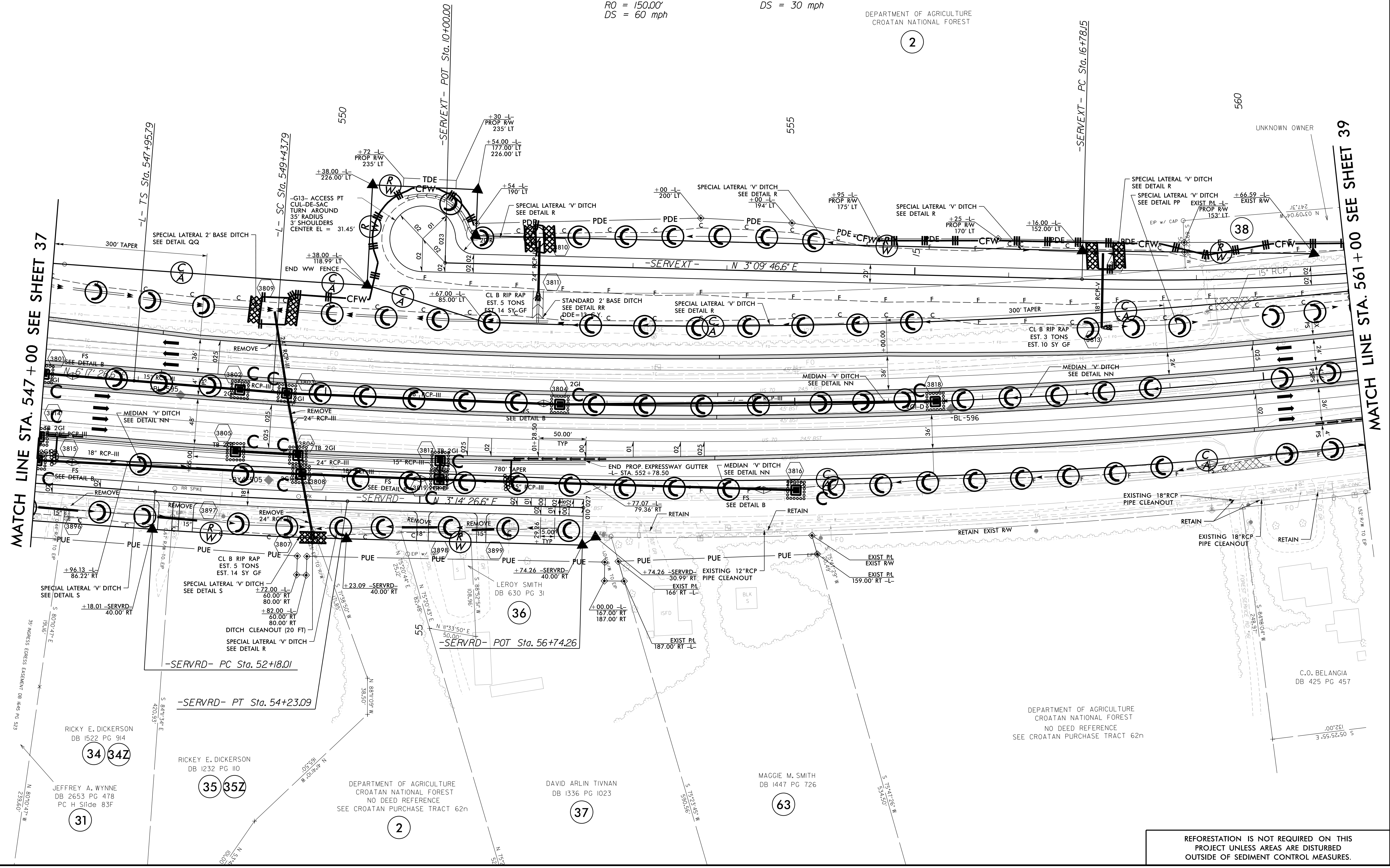
-L-
 PI Sta 548+94.45 Δ = 10° 16' 02.6" (LT)
 Δs = 0° 38' 46.1" D = 0° 52' 23.3"
 Ls = 148.00' L = 1,175.91'
 LT = 98.67' T = 589.53'
 ST = 49.33' R = 6,562.00'
 SE = 0.025
 RO = 150.00'
 DS = 60 mph

-SERVEXT-
 PI Sta 18+96.44 Δ = 8° 19' 25.3" (LT)
 Δ = 10° 16' 02.6" (LT)
 D = 1° 54' 35.5"
 L = 435.83'
 T = 218.30'
 R = 3,000.00'
 SE = NC
 DS = 30 mph



DEPARTMENT OF AGRICULTURE
 CROATAN NATIONAL FOREST

(2)



8/17/99
 11/7/2018
 L:\7\RA\9729-02\CA00\1015\Roadside\1015_REU_EC-89_PSH_38_F.mxd.dgn

REFORESTATION IS NOT REQUIRED ON THIS PROJECT UNLESS AREAS ARE DISTURBED OUTSIDE OF SEDIMENT CONTROL MEASURES.

Place Matting for Erosion Control on Slopes Adjacent to Permitted Wetlands as Work Allows. -L- 567+50 to -L- 575+00

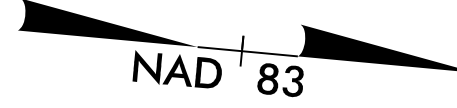
Place Natural Fiber Mesh on Slopes Adjacent to Permitted Wetlands as Work Allows on NFS Lands. -L- 561+00 to -L- 567+50

-L-
 PI Sta 555+33.32 Δ = 10° 16' 02.6" (LT)
 D = 0° 52' 23.3" L = 1,175.91'
 T = 589.53' R = 6,562.00'
 SE = 0.025
 RO = 148.00'
 DS = 60 mph

-SERVEXT-
 PI Sta 561+69.03 Δs = 0° 38' 46.1"
 Ls = 148.00' LT = 98.67'
 ST = 49.33'

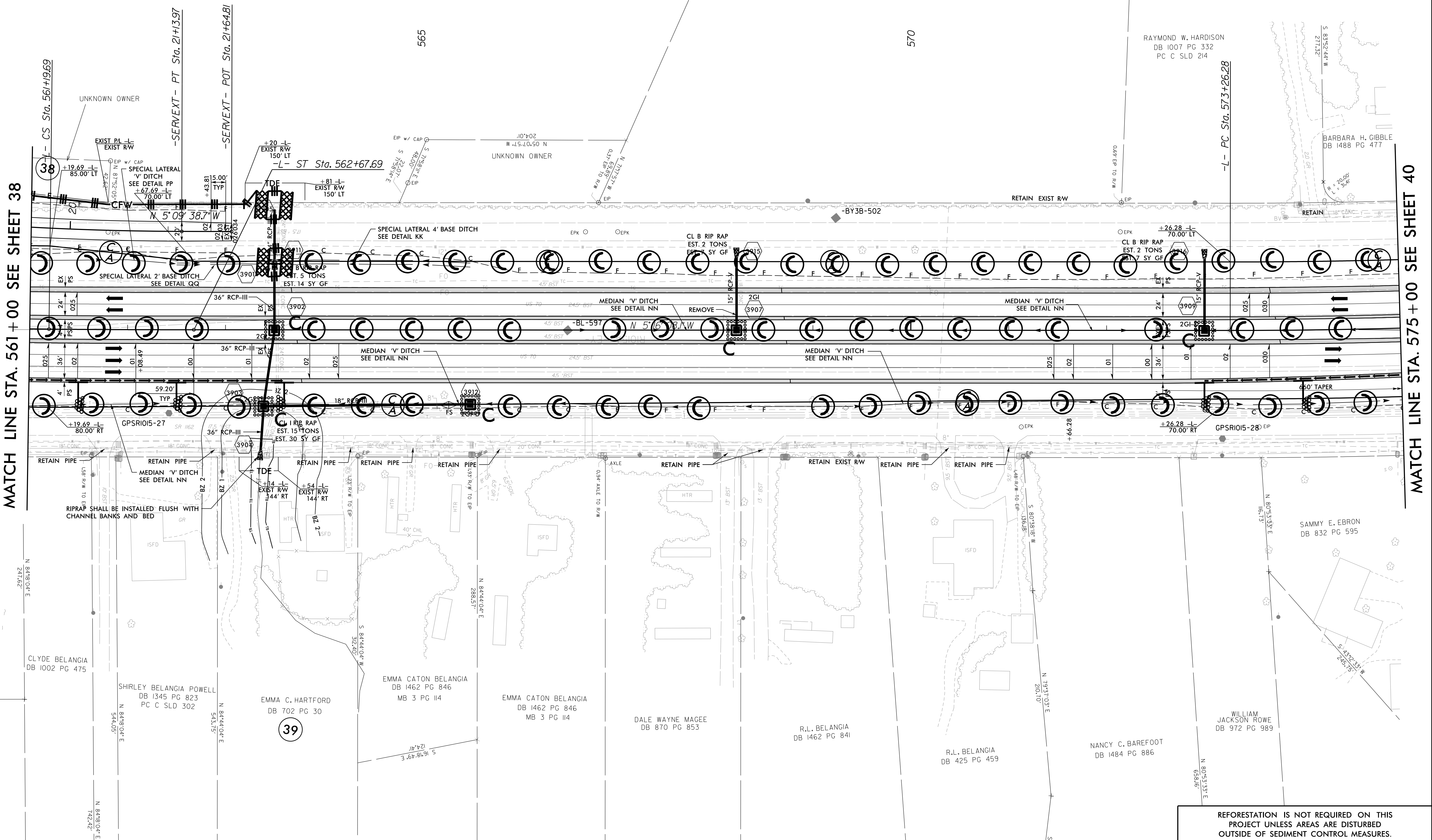
-SERVEXT-
 PI Sta 18+96.44 Δ = 8° 19' 25.3" (LT)
 D = 1° 54' 35.5" L = 435.83'
 T = 218.30' R = 3,000.00'
 SE = NC
 DS = 30 mph

DEPARTMENT OF AGRICULTURE
 CROATAN NATIONAL FOREST
 NO DEED REFERENCE
 SEE CROATAN PURCHASE TRACT 62n



MATCH LINE STA. 561+00 SEE SHEET 38

MATCH LINE STA. 575+00 SEE SHEET 40



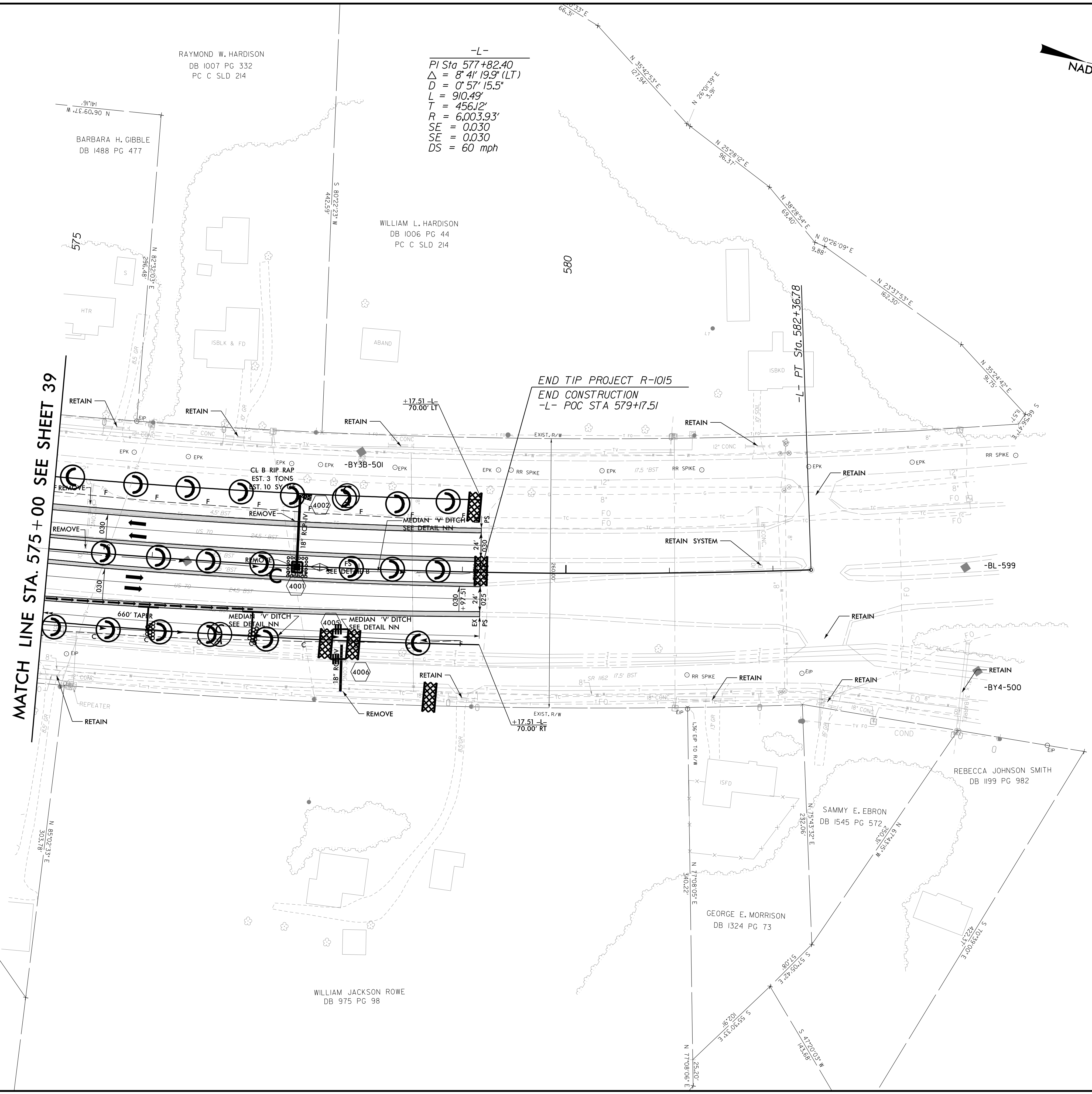
REFORESTATION IS NOT REQUIRED ON THIS PROJECT UNLESS AREAS ARE DISTURBED OUTSIDE OF SEDIMENT CONTROL MEASURES.

8/17/99
 I:\7208\1015\Roadside\1015_REU\EC-90_PSH_39_Final.dgn
 10/17/99 10:29:02

Place Matting for Erosion Control on Slopes Adjacent to Permitted Wetlands as Work Allows.



-L-
 PI Sta 577+82.40
 $\Delta = 8' 41'' 19.9''$ (LT)
 $D = 0' 57'' 15.5''$
 $L = 910.49'$
 $T = 456.12'$
 $R = 6,003.93'$
 $SE = 0.030$
 $SE = 0.030$
 $DS = 60$ mph



MATCH LINE STA. 575+00 SEE SHEET 39

END TIP PROJECT R-1015
 END CONSTRUCTION
 -L- POC STA 579+17.51

-L- PT Sta. 582+36.78

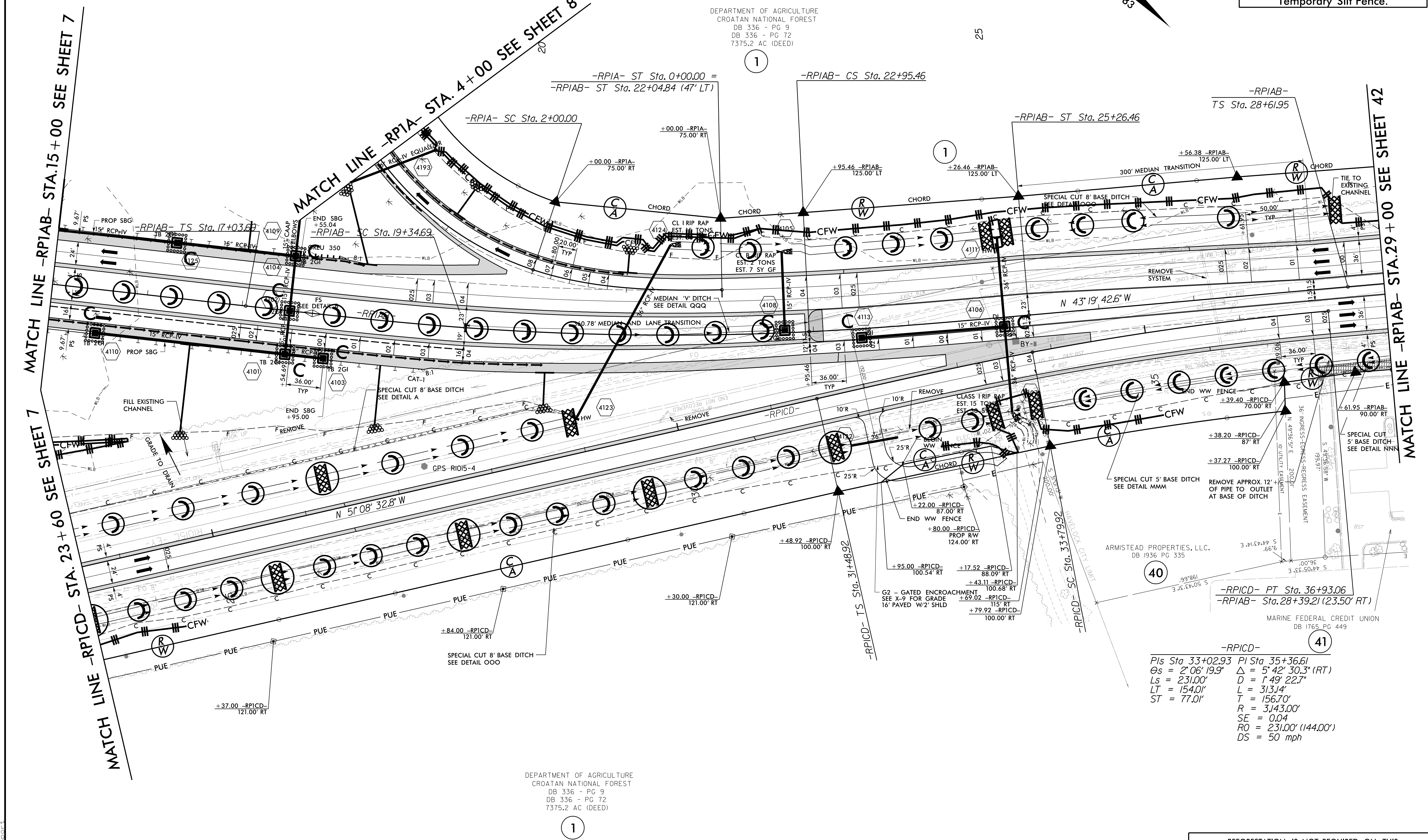
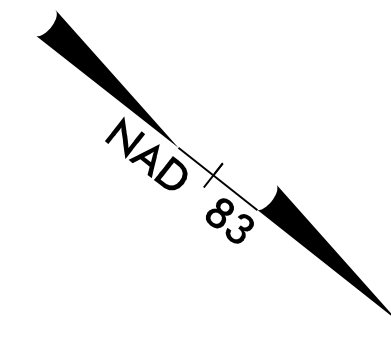
8/17/99
 I:\7\20\8\15\729-02\CA000\1015\Roadside\1015_REU\EC-91_PSH_40_F.mxd.dgn

REFORESTATION IS NOT REQUIRED ON THIS PROJECT UNLESS AREAS ARE DISTURBED OUTSIDE OF SEDIMENT CONTROL MEASURES.

Place Natural Fiber Mesh on Slopes Adjacent to Permitted Wetlands as Work Allows on NFS Lands.

Install Temporary Slope Drain Outlets Within the Inner Temporary Silt Fence.

-RPIA-		-RPIAB-	
Pls Sta 1+27.46	PI Sta 6+08.39	Pls Sta 18+57.70	PI Sta 21+15.30
Os = 1°56'40.7"	Δ = 102°27'39.0" (RT)	Os = 2°14'27.6"	Δ = 7°00'00.0" (LT)
Es = 17°29'42.6"	D = 17°28'05.6"	Es = 2°14'27.6"	D = 1°56'24.9"
Ls = 200.00'	L = 586.56'	Ls = 231.00'	L = 360.78'
LT = 127.46'	T = 408.39'	LT = 154.01'	T = 180.61'
ST = 74.24'	R = 328.00'	ST = 77.01'	R = 2,953.00'
	SE = 0.08		SE = 0.035
	RO = 200.00'		RO = 144.00'
	DS = 35 mph		DS = 50 mph



DEPARTMENT OF AGRICULTURE
CROATAN NATIONAL FOREST
DB 336 - PG 9
DB 336 - PG 72
7375.2 AC (DEED)

DEPARTMENT OF AGRICULTURE
CROATAN NATIONAL FOREST
DB 336 - PG 9
DB 336 - PG 72
7375.2 AC (DEED)

-RPIAB- PT Sta. 36+93.06
-RPIAB- Sta. 28+39.21 (23.50' RT)

-RPICD-	
Pls Sta 33+02.93	PI Sta 35+36.61
Os = 2°06'19.9"	Δ = 5°42'30.3" (RT)
Ls = 231.00'	D = 1°49'22.7"
LT = 154.01'	L = 313.14'
ST = 77.01'	T = 156.70'
	R = 3,143.00'
	SE = 0.04
	RO = 231.00' (144.00')
	DS = 50 mph

REFORESTATION IS NOT REQUIRED ON THIS PROJECT UNLESS AREAS ARE DISTURBED OUTSIDE OF SEDIMENT CONTROL MEASURES.

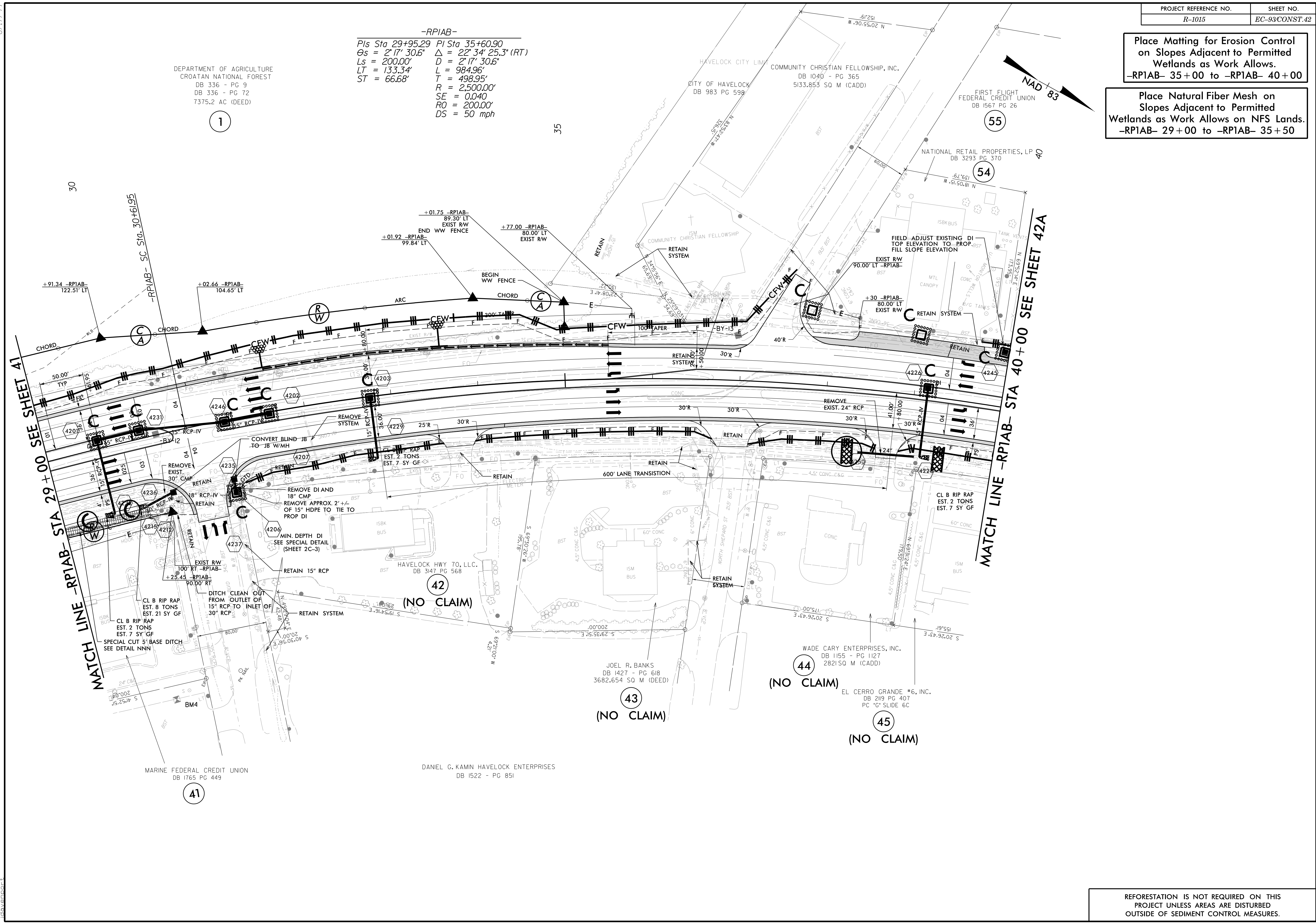
8/17/99
 1/7/2008
 15:FAV9729-02:CA000R1015:Roadside-VR-1015_REU-EC-92_PSH-41.F.mol.dgn

Place Matting for Erosion Control on Slopes Adjacent to Permitted Wetlands as Work Allows.
-RPIAB- 35+00 to -RPIAB- 40+00

Place Natural Fiber Mesh on Slopes Adjacent to Permitted Wetlands as Work Allows on NFS Lands.
-RPIAB- 29+00 to -RPIAB- 35+50

-RPIAB-
Pls Sta 29+95.29 PI Sta 35+60.90
 $\theta_s = 2' 17'' 30.6''$ $\Delta = 22' 34'' 25.3''$ (RT)
 $L_s = 200.00'$ $D = 2' 17'' 30.6''$
 $LT = 133.34'$ $L = 984.96'$
 $ST = 66.68'$ $T = 498.95'$
 $R = 2,500.00'$
 $SE = 0.040$
 $RO = 200.00'$
 $DS = 50$ mph

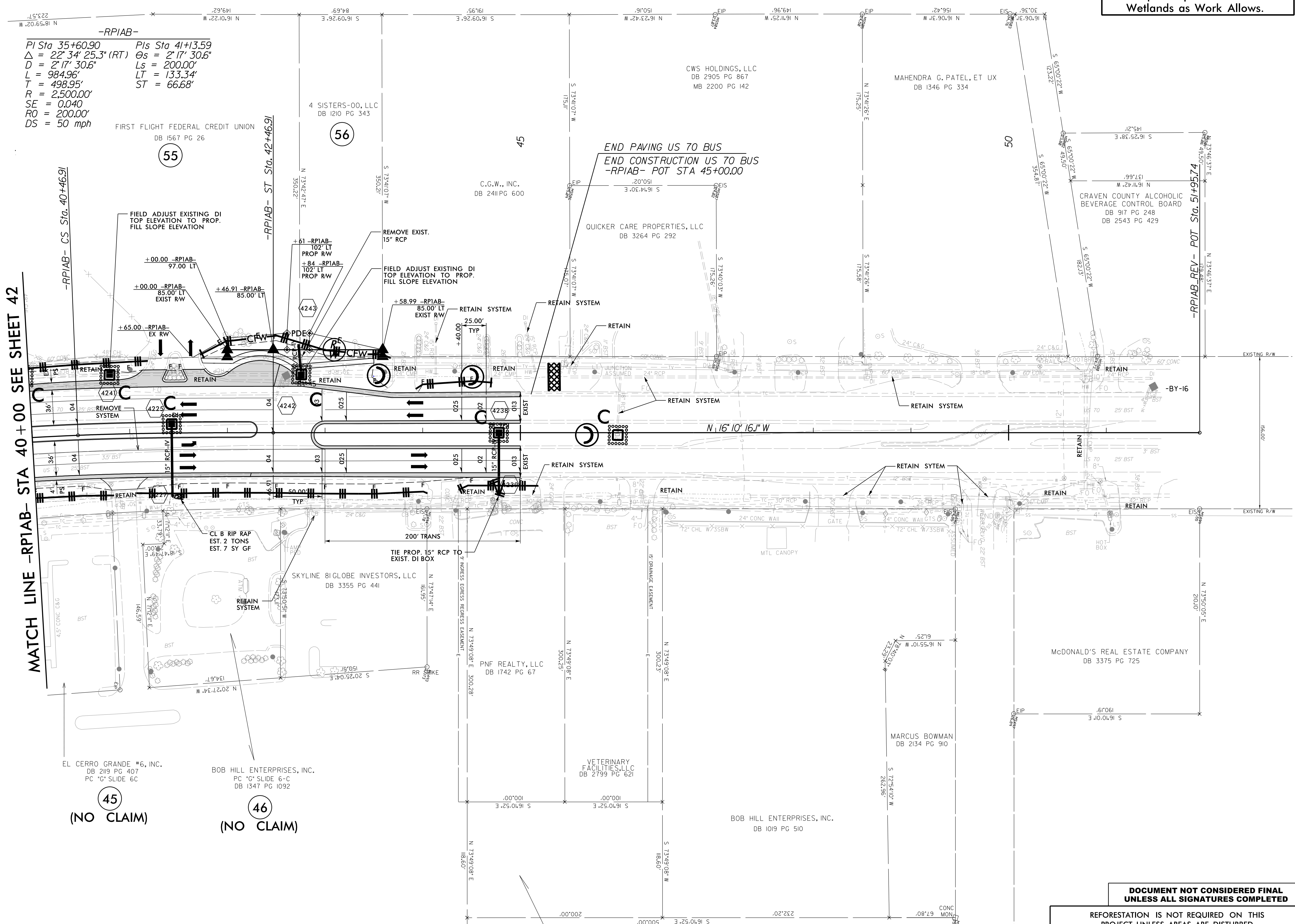
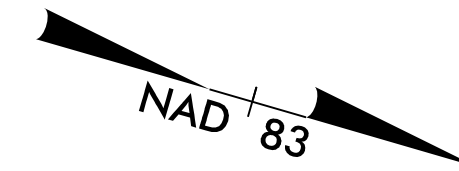
DEPARTMENT OF AGRICULTURE
CROATAN NATIONAL FOREST
DB 336 - PG 9
DB 336 - PG 72
7375.2 AC (DEED)



8/17/99
I:\7\RAV\9729-02\CAADD\N\1015\Roadside\VR-1015_REU\EC-93_PSH_42_F.mxd.dgn

REFORESTATION IS NOT REQUIRED ON THIS PROJECT UNLESS AREAS ARE DISTURBED OUTSIDE OF SEDIMENT CONTROL MEASURES.

Place Matting for Erosion Control on Slopes Adjacent to Permitted Wetlands as Work Allows.



-RPIAB-
 PI Sta 35+60.90 Pls Sta 41+13.59
 $\Delta = 22^\circ 34' 25.3''$ (RT) $\Theta_s = 2^\circ 17' 30.6''$
 $D = 2^\circ 17' 30.6''$ $L_s = 200.00'$
 $L = 984.96'$ $LT = 133.34'$
 $T = 498.95'$ $ST = 66.68'$
 $R = 2,500.00'$
 $SE = 0.040$
 $RO = 200.00'$
 $DS = 50$ mph

MATCH LINE -RPIAB- STA 40 + 00 SEE SHEET 42

(45)
(NO CLAIM)

(46)
(NO CLAIM)

DOCUMENT NOT CONSIDERED FINAL UNLESS ALL SIGNATURES COMPLETED

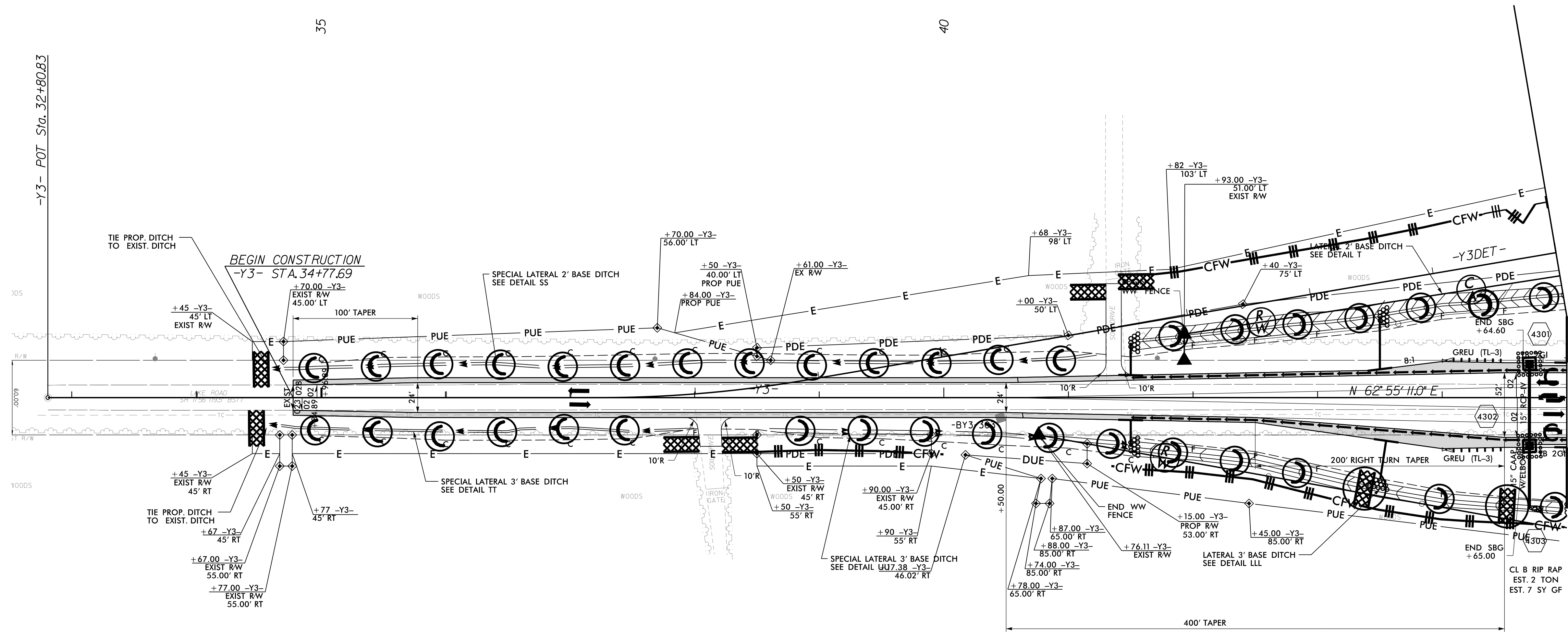
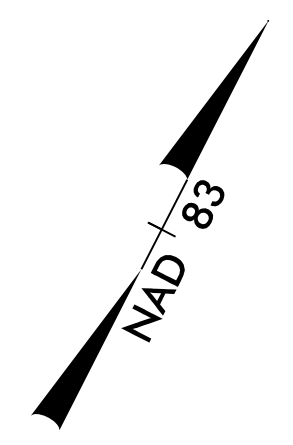
REFORESTATION IS NOT REQUIRED ON THIS PROJECT UNLESS AREAS ARE DISTURBED OUTSIDE OF SEDIMENT CONTROL MEASURES.

11/7/2018 10:57:29-02\CA000\1015\Roadside\1015_REU_EC-93A_PSH_42A.F.ino1.dgn
 8.17/99

Place Matting for Erosion Control on Slopes Adjacent to Permitted Wetlands as Work Allows.

WEYERHAEUSER COMPANY
DB 1048 - PG 1014

4



MATCH LINE -Y3- STA. 45+00 SEE SHEET 17

WEYERHAEUSER COMPANY
DB 1048 - PG 1014

4

REFORESTATION IS NOT REQUIRED ON THIS PROJECT UNLESS AREAS ARE DISTURBED OUTSIDE OF SEDIMENT CONTROL MEASURES.

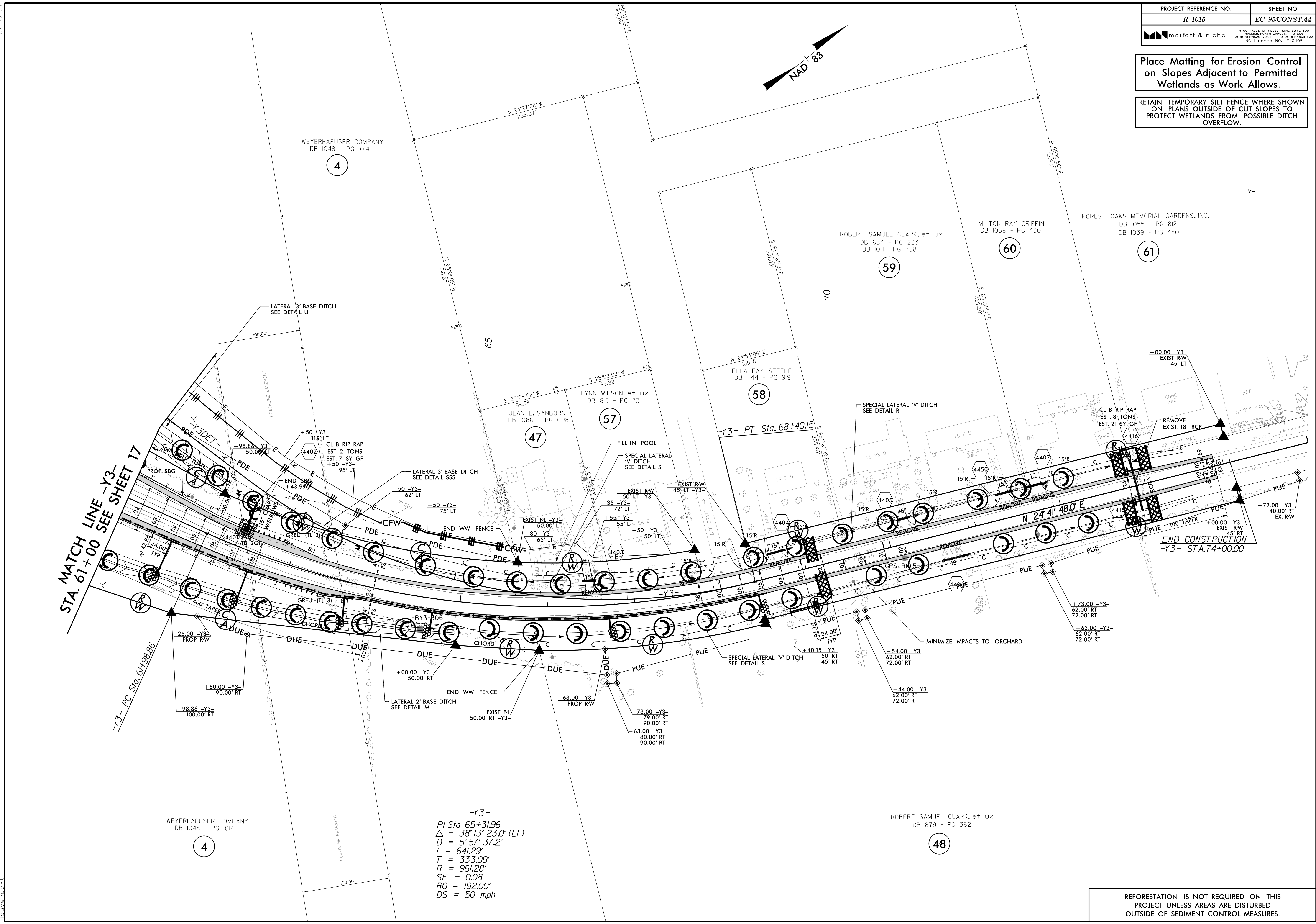
8/17/99

I:\7208\15729-02\CA000\1015\Roadside\1015_REU_EC-94_PSH_43_Final.dgn

Place Matting for Erosion Control on Slopes Adjacent to Permitted Wetlands as Work Allows.

RETAIN TEMPORARY SILT FENCE WHERE SHOWN ON PLANS OUTSIDE OF CUT SLOPES TO PROTECT WETLANDS FROM POSSIBLE DITCH OVERFLOW.

8/17/99
 I:\7208\1015\Roadside\1015_REU_EC-95_PSH_44_Final.dgn
 10/15/99 10:29 AM



MATCH LINE -Y3-
STA. 61+00 SEE SHEET 17

-Y3- PC Sta. 61+98.86

-Y3- PT Sta. 68+40.15

END CONSTRUCTION
-Y3- STA. 74+00.00

-Y3-
 $PI\ Sta\ 65+31.96$
 $\Delta = 38'13''\ 23.0''\ (LT)$
 $D = 5'57''\ 37.2''$
 $L = 641.29'$
 $T = 333.09'$
 $R = 961.28'$
 $SE = 0.08$
 $RO = 192.00'$
 $DS = 50\ mph$

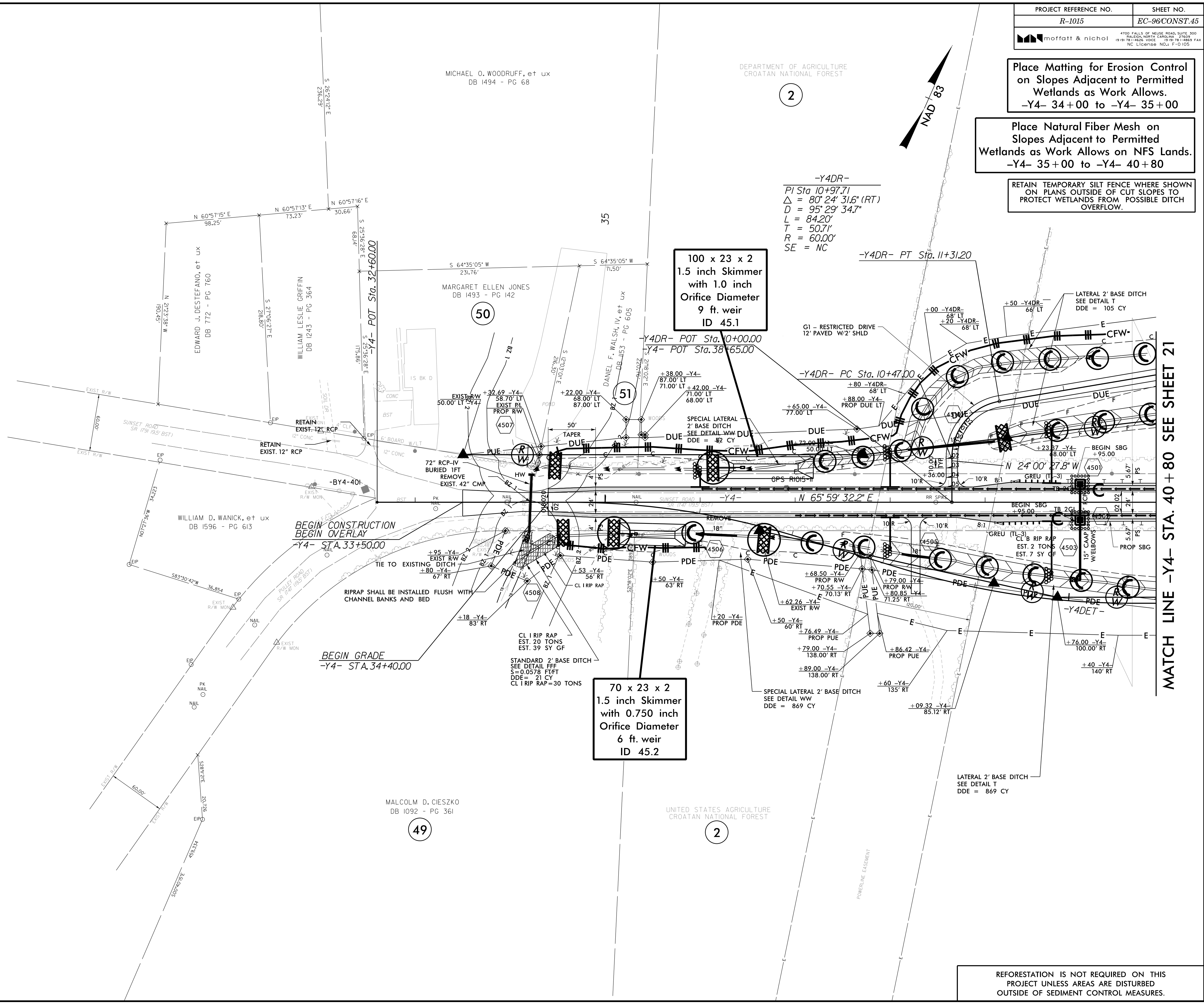
REFORESTATION IS NOT REQUIRED ON THIS PROJECT UNLESS AREAS ARE DISTURBED OUTSIDE OF SEDIMENT CONTROL MEASURES.

Place Matting for Erosion Control on Slopes Adjacent to Permitted Wetlands as Work Allows. -Y4- 34+00 to -Y4- 35+00

Place Natural Fiber Mesh on Slopes Adjacent to Permitted Wetlands as Work Allows on NFS Lands. -Y4- 35+00 to -Y4- 40+80

RETAIN TEMPORARY SILT FENCE WHERE SHOWN ON PLANS OUTSIDE OF CUT SLOPES TO PROTECT WETLANDS FROM POSSIBLE DITCH OVERFLOW.

8.17.99
 I:\7\2015\15\Roadside\1015\Roadside\1015_REU\EC-96_PSH_45_Final.dgn
 11/7/2015 9:29:02 AM

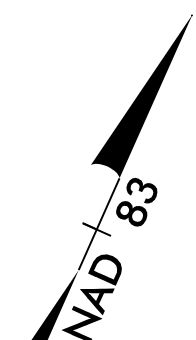


50

51

49

2



-Y4DR-
 PI Sta 10+97.71
 $\Delta = 80^\circ 24' 31.6''$ (RT)
 $D = 95^\circ 29' 34.7''$
 $L = 84.20'$
 $T = 50.71'$
 $R = 60.00'$
 $SE = NC$

100 x 23 x 2
 1.5 inch Skimmer
 with 1.0 inch
 Orifice Diameter
 9 ft. weir
 ID 45.1

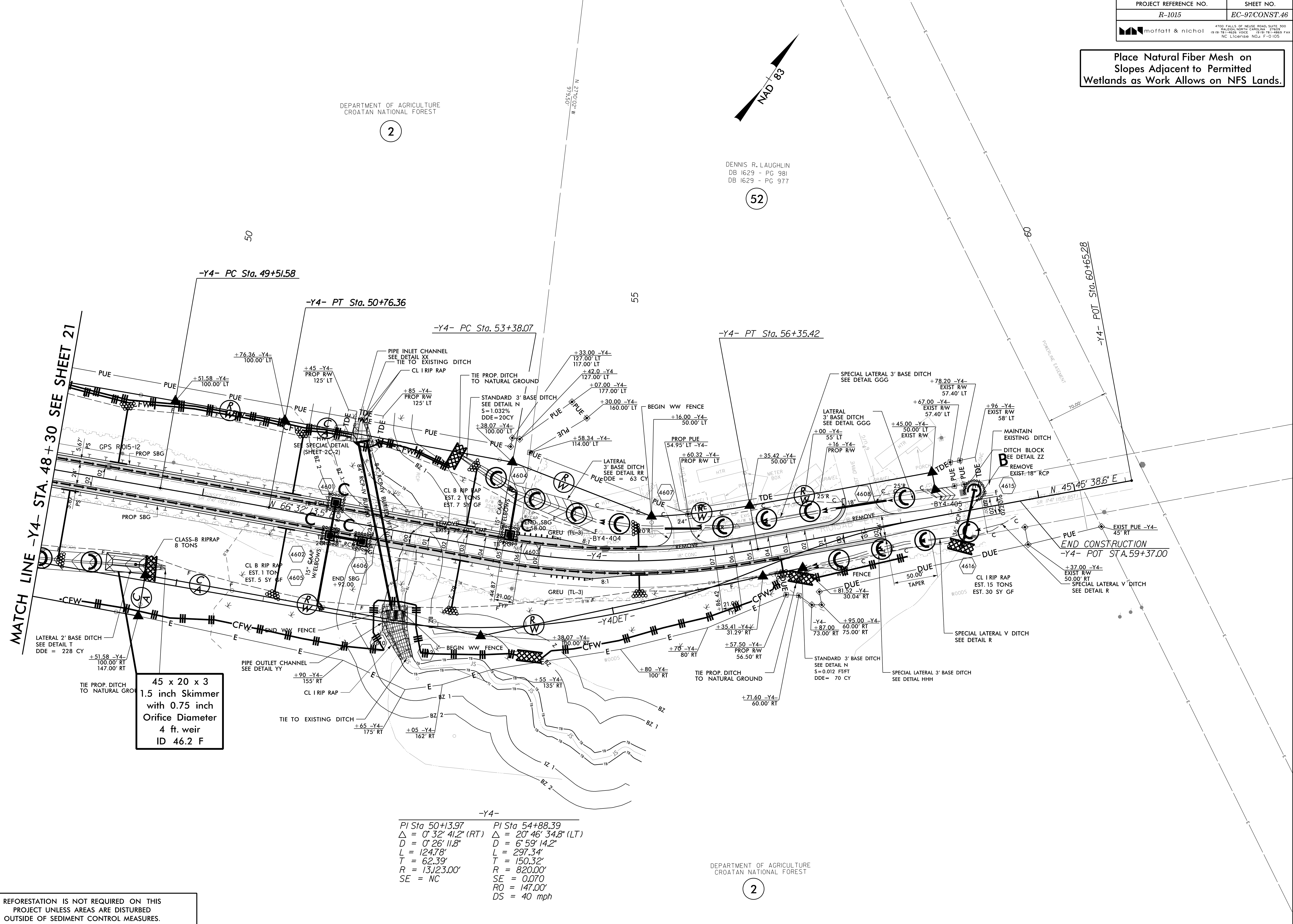
70 x 23 x 2
 1.5 inch Skimmer
 with 0.750 inch
 Orifice Diameter
 6 ft. weir
 ID 45.2

REFORESTATION IS NOT REQUIRED ON THIS PROJECT UNLESS AREAS ARE DISTURBED OUTSIDE OF SEDIMENT CONTROL MEASURES.

Place Natural Fiber Mesh on Slopes Adjacent to Permitted Wetlands as Work Allows on NFS Lands.

DEPARTMENT OF AGRICULTURE
CROATAN NATIONAL FOREST

DENNIS R. LAUGHLIN
DB 1629 - PG 981
DB 1629 - PG 977



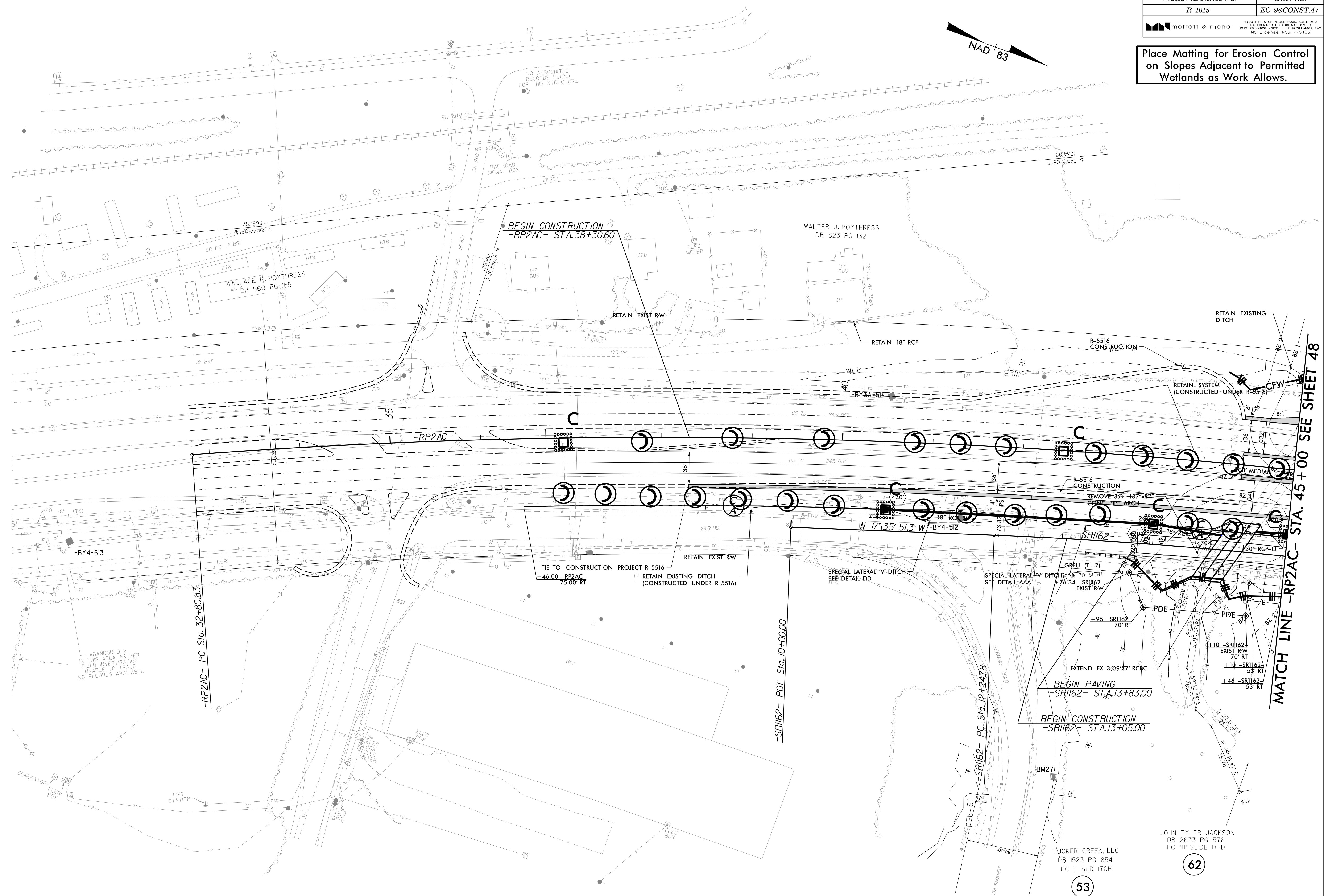
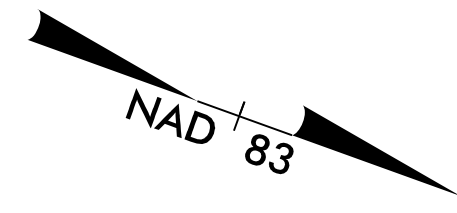
45 x 20 x 3
1.5 inch Skimmer
with 0.75 inch
Orifice Diameter
4 ft. weir
ID 46.2 F

-Y4-	
PI Sta 50+13.97	PI Sta 54+88.39
$\Delta = 0^{\circ} 32' 41.2" (RT)$	$\Delta = 20^{\circ} 46' 34.8" (LT)$
$D = 0^{\circ} 26' 11.8"$	$D = 6^{\circ} 59' 14.2"$
$L = 124.78'$	$L = 297.34'$
$T = 62.39'$	$T = 150.32'$
$R = 13123.00'$	$R = 820.00'$
$SE = NC$	$SE = 0.070$
	$RO = 147.00'$
	$DS = 40 \text{ mph}$

REFORESTATION IS NOT REQUIRED ON THIS PROJECT UNLESS AREAS ARE DISTURBED OUTSIDE OF SEDIMENT CONTROL MEASURES.

8/17/99
 1/7/2008
 D:\FA\9729-02\CA000\1015\Roadside\NR-1015_REU\EC-97_PSH_46_Final.dgn

Place Matting for Erosion Control on Slopes Adjacent to Permitted Wetlands as Work Allows.



MATCH LINE -RP2AC- STA. 45+00 SEE SHEET 48

53

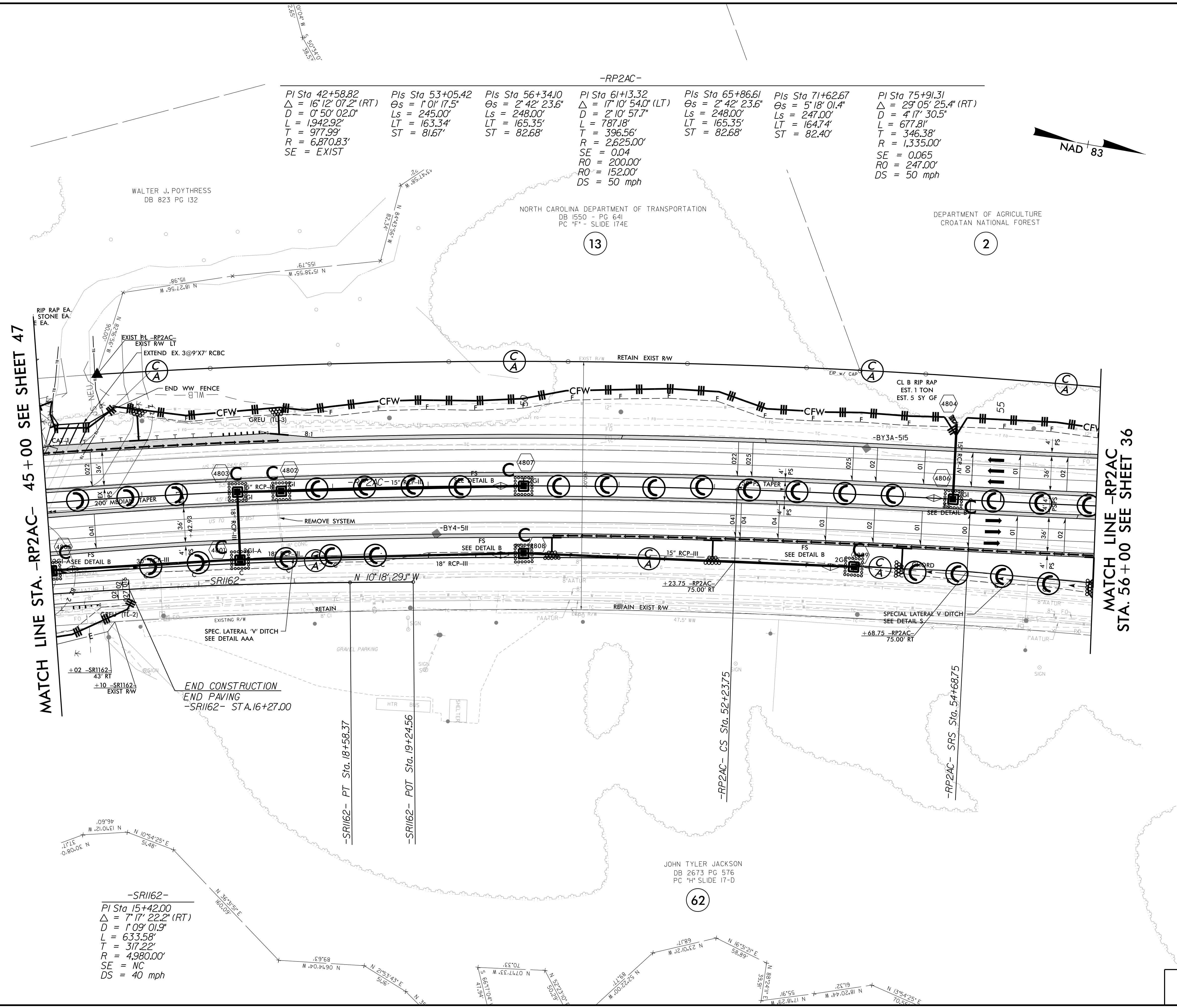
62

REFORESTATION IS NOT REQUIRED ON THIS PROJECT UNLESS AREAS ARE DISTURBED OUTSIDE OF SEDIMENT CONTROL MEASURES.

8.17.7/89
 I:\7\RA\9729-02\CADD\RI015\Roadside\VR-1015_REU\EC-98_PSH_47_Final.dgn
 1/7/2018 10:57:29 AM

Place Natural Fiber Mesh on Slopes Adjacent to Permitted Wetlands as Work Allows on NFS Lands.

-RP2AC-						
PI Sta 42+58.82 Δ = 16°12'07.2" (RT) D = 0°50'02.0" L = 1,942.92' T = 977.99' R = 6,870.83' SE = EXIST	PIs Sta 53+05.42 Θs = 1°01'17.5" Ls = 245.00' LT = 163.34' ST = 81.67'	PIs Sta 56+34.10 Θs = 2°42'23.6" Ls = 248.00' LT = 165.35' ST = 82.68'	PI Sta 61+13.32 Δ = 17°10'54.0" (LT) D = 2°10'57.7" L = 787.18' T = 396.56' R = 2,625.00' SE = 0.04 RO = 200.00' RO' = 152.00' DS = 50 mph	PIs Sta 65+86.61 Θs = 2°42'23.6" Ls = 248.00' LT = 165.35' ST = 82.68'	PIs Sta 71+62.67 Θs = 5°18'01.4" Ls = 247.00' LT = 164.74' ST = 82.40'	PI Sta 75+91.31 Δ = 29°05'25.4" (RT) D = 4°17'30.5" L = 677.81' T = 346.38' R = 1,335.00' SE = 0.065 RO = 247.00' DS = 50 mph



MATCH LINE -RP2AC STA. 56+00 SEE SHEET 36

END CONSTRUCTION
END PAVING
-SRI162- STA. 16+27.00

-SRI162-	
PI Sta 15+42.00	
Δ = 7°17'22.2" (RT)	
D = 1°09'01.9"	
L = 633.58'	
T = 317.22'	
R = 4,980.00'	
SE = NC	
DS = 40 mph	

REFORESTATION IS NOT REQUIRED ON THIS PROJECT UNLESS AREAS ARE DISTURBED OUTSIDE OF SEDIMENT CONTROL MEASURES.

8/17/99 1:17:20 PM D:\FAS\9729-02\CA000\1015\Roadside\VR-1015_REU_EC-99_PSH_48_F.mxd