

TIP PROJECT: R-1015

20-NOV-2018 18:36 S:\Server_Files\PROJECTS\2015\2015501.00 NCDOT R-1015\Design\Utilities\Engineering\UBO\Proj\R-1015_ut_1_sh_U01.psh.dgn

STATE OF NORTH CAROLINA
DIVISION OF HIGHWAYS

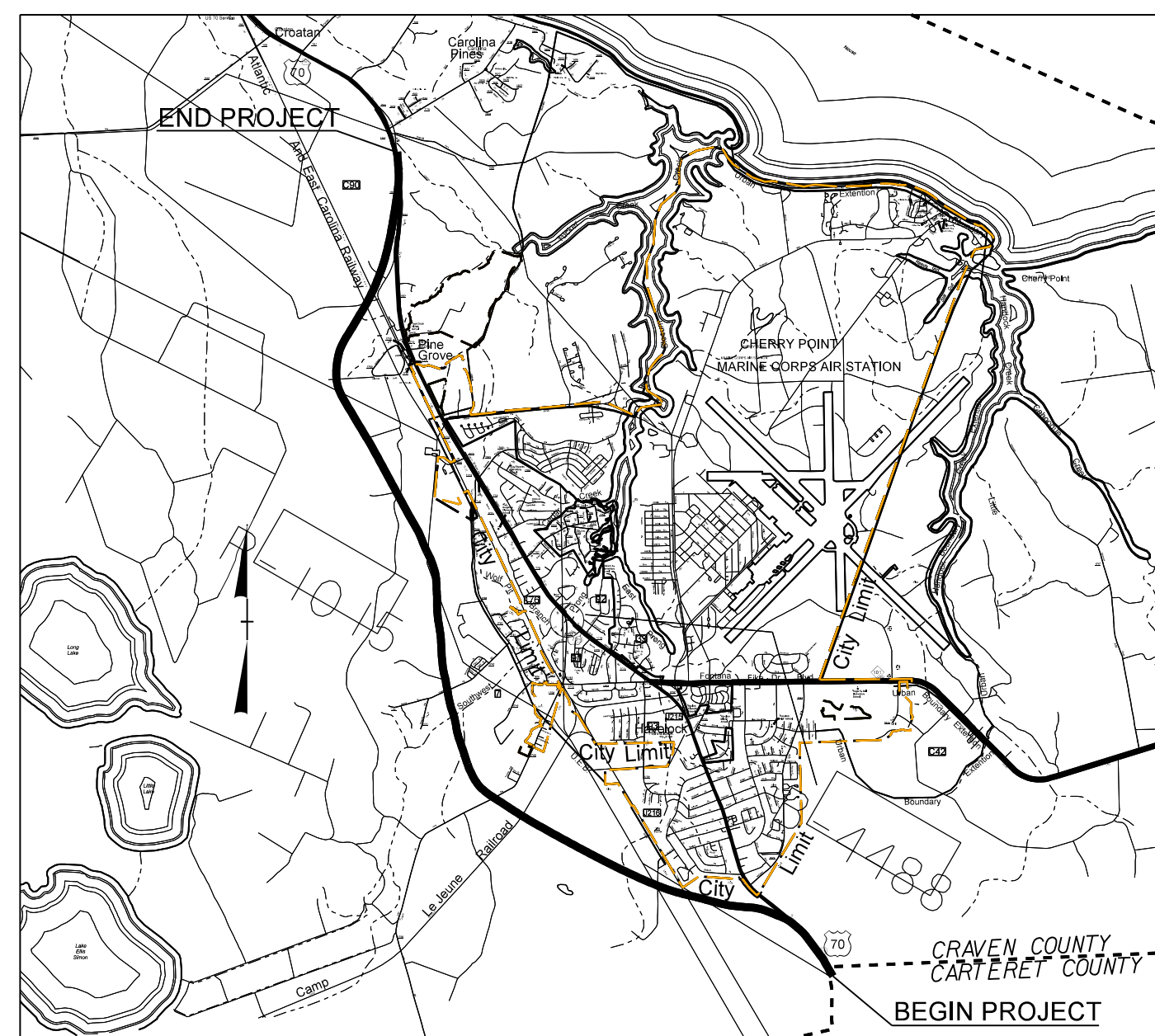
T.I.P. NO.	SHEET NO.
R-1015	UO-1

NOTE:
ALL UTILITY WORK SHOWN ON THIS SHEET IS DONE BY OTHERS.
NO PAYMENT WILL BE MADE TO THE CONTRACTOR FOR UTILITY WORK SHOWN ON THIS SHEET.

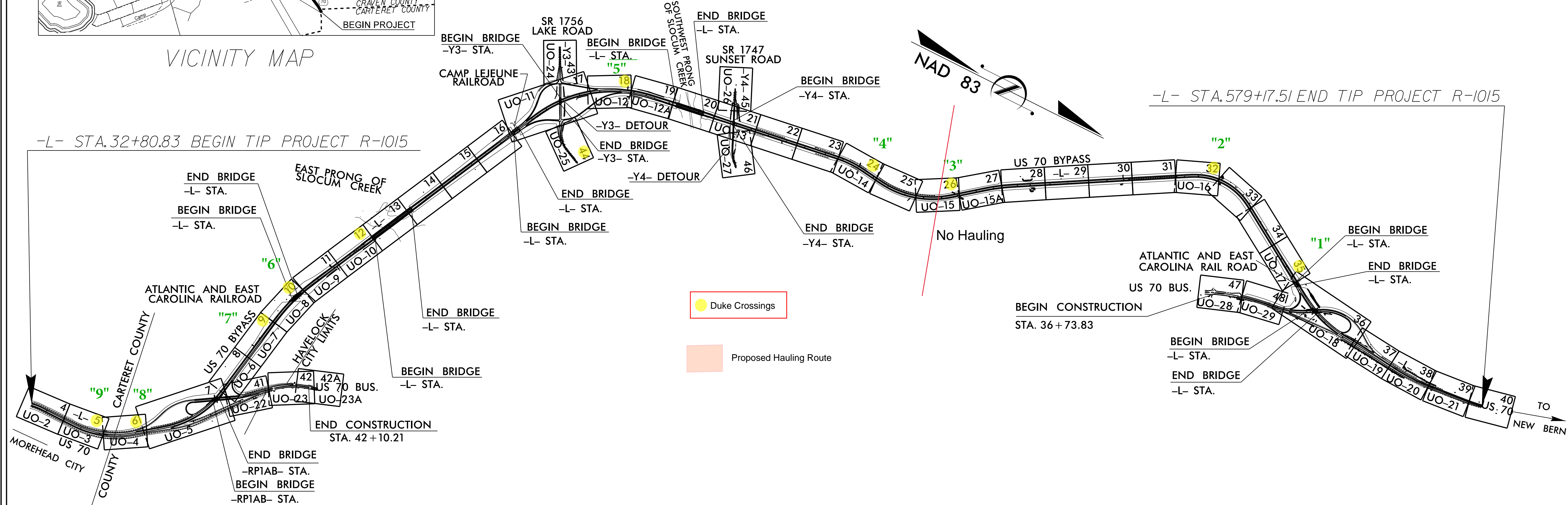
**UTILITIES BY OTHERS PLANS
CRAVEN COUNTY**

LOCATION: US 70 (HAVELOCK BYPASS) FROM SOUTH OF CARTERET/CRAVEN COUNTY LINE TO SOUTH OD SR 1176 (CAROLINE PINES BLVD.)

TYPE OF WORK: RELOCATION OF POWER AND COMMUNICATION LINES

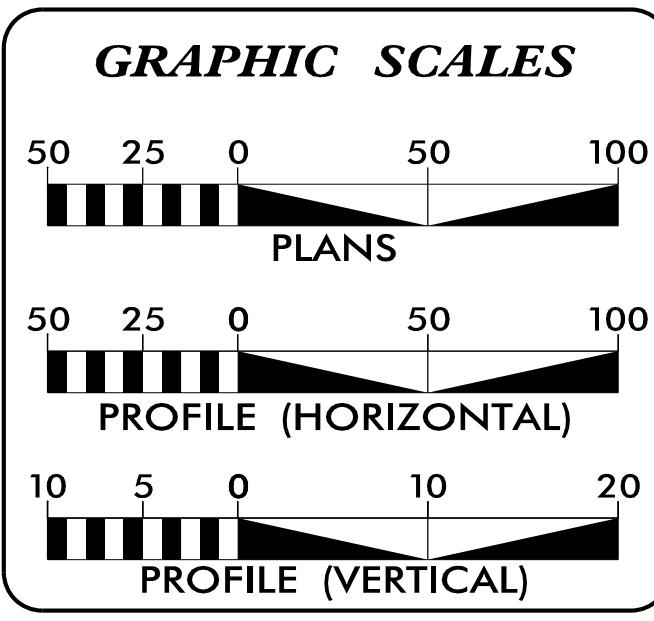


VICINITY MAP



THIS IS A CONTROLLED-ACCESS PROJECT WITH ACCESS BEING LIMITED TO INTERCHANGES
A PORTION OF THIS PROJECT IS WITHIN THE MUNICIPAL BOUNDARIES OF HAVELOCK.
CLEARING ON THIS PROJECT SHALL BE PERFORMED TO THE LIMITS ESTABLISHED BY METHOD _____.

TIE ALL PUE LINES TO A NCDOT R/W (EXISTING OR PROPOSED)



INDEX OF SHEETS

SHEET NO.	DESCRIPTION
UO-1	TITLE SHEET
UO-2 THRU UO-29	UBO PLAN SHEETS

UTILITY OWNERS WITH CONFLICTS

(A)	POWER - DUKE ENERGY (TRANS)
(B)	POWER - CITY OF NEW BERN
(C)	POWER - CARTERET-CRAVEN
(D)	POWER - DUKE ENERGY (DISTR)
(E)	TELEPHONE - CENTURYLINK
(F)	CATV - CHARTER/SPECTRUM COMMUNICATIONS
(G)	FIBER - SPIRIT COMMUNICATIONS
(H)	FIBER - MCNC
(I)	WATER - CRAVEN COUNTY WATER
(J)	GAS - PIEDMONT NATURAL GAS

PREPARED IN THE OFFICE OF:

HINDE ENGINEERING
License No. C-2639
401 Harrison Oaks Blvd., Suite 145 Cary, NC 27513
(919)-853-0001

Michael E. Davis	UTILITY COORDINATION PROJECT MANAGER
Bill F. Black	PROJECT UTILITY COORDINATOR
James N. Arnold	PROJECT UTILITY DESIGNER

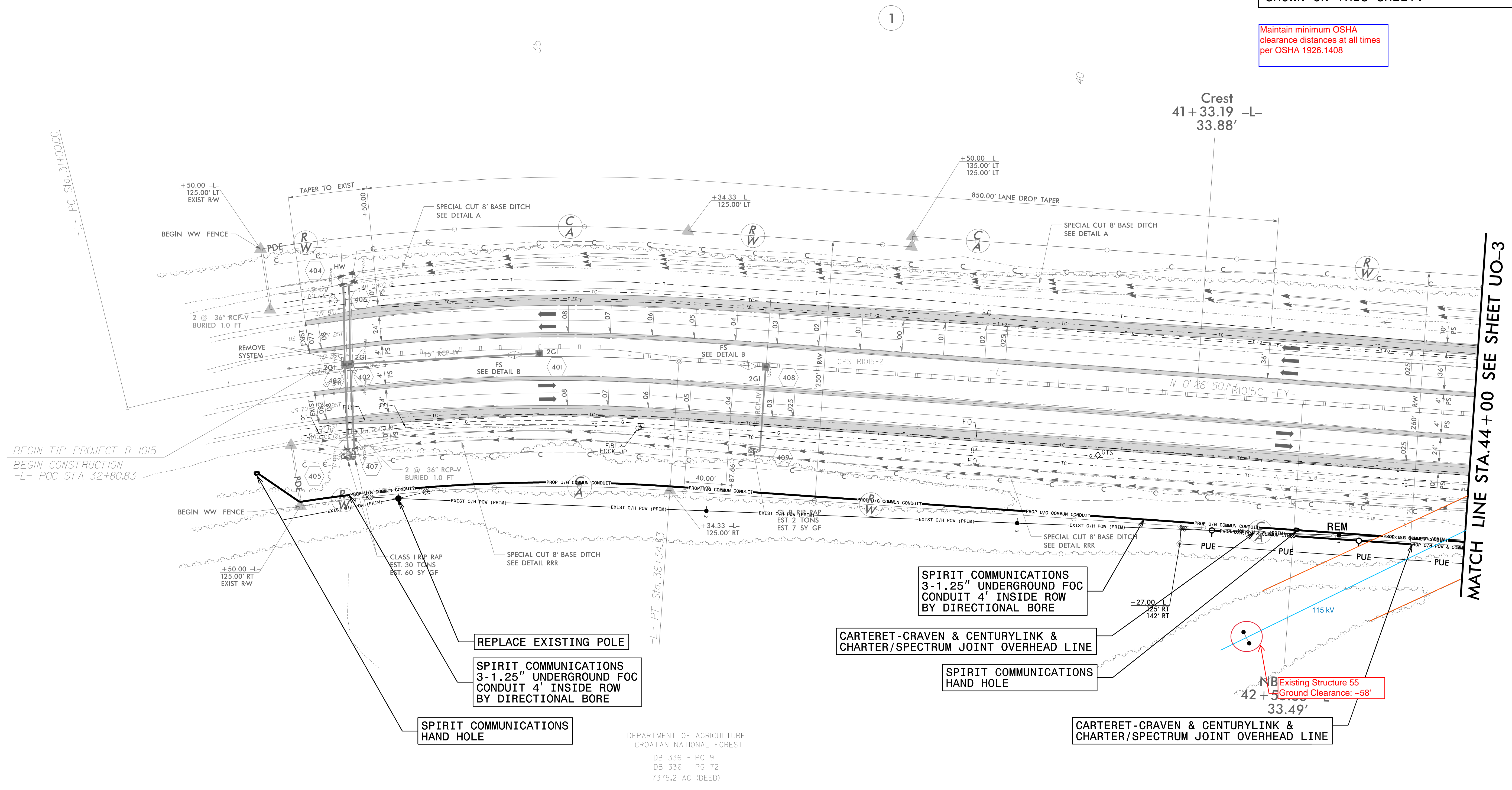
DIVISION OF HIGHWAYS UTILITIES UNIT
1555 MAIL SERVICES CENTER
RALEIGH, NC 27699-1555
PHONE (919) 707-6690
FAX (919) 250-4151

Bo Hemphill, P.E. UTILITIES REGIONAL ENGINEER
Kijah Kamil UTILITIES ENGINEER
Ed Reams Jr. UTILITIES AREA COORDINATOR
Larry James Jr. UTILITIES COORDINATOR

UTILITIES BY OTHERS

NOTE:
ALL UTILITY WORK SHOWN ON THIS SHEET WILL BE DONE BY OTHERS. NO PAYMENT WILL BE MADE TO THE CONTRACTOR FOR UTILITY WORK SHOWN ON THIS SHEET.

Maintain minimum OSHA clearance distances at all times per OSHA 1926.1408



REPLACE EXISTING POLE
SPIRIT COMMUNICATIONS 3-1.25" UNDERGROUND FOC CONDUIT 4' INSIDE ROW BY DIRECTIONAL BORE
SPIRIT COMMUNICATIONS HAND HOLE

SPIRIT COMMUNICATIONS 3-1.25" UNDERGROUND FOC CONDUIT 4' INSIDE ROW BY DIRECTIONAL BORE
CARTERET-CRAVEN & CENTURYLINK & CHARTER/SPECTRUM JOINT OVERHEAD LINE
SPIRIT COMMUNICATIONS HAND HOLE

CARTERET-CRAVEN & CENTURYLINK & CHARTER/SPECTRUM JOINT OVERHEAD LINE

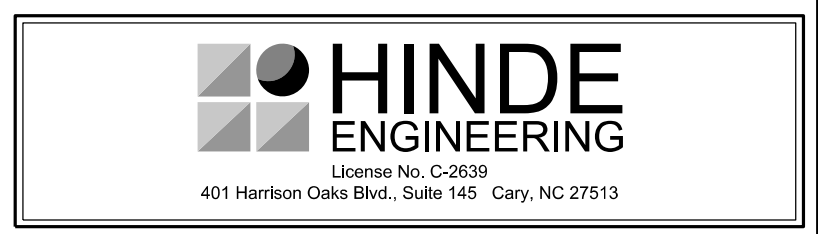
DEPARTMENT OF AGRICULTURE
CROATAN NATIONAL FOREST
DB 336 - PG 9
DB 336 - PG 72
7375.2 AC (DEED)

Existing Structure 55
Ground Clearance: ~58'

MATCH LINE STA. 44 + 00 SEE SHEET UO-3

20 NOV 2018 16:17 PROJECTS\2015\A2015501\00 NCDOT R-1015\Design\Utilities\Engineering\UBO\Proj\1015\ut_rdy4_U02_psh.dgn

SEE RDWY STD DWGS 865.01 FOR CABLE GUIDERAIL INSTALLATION



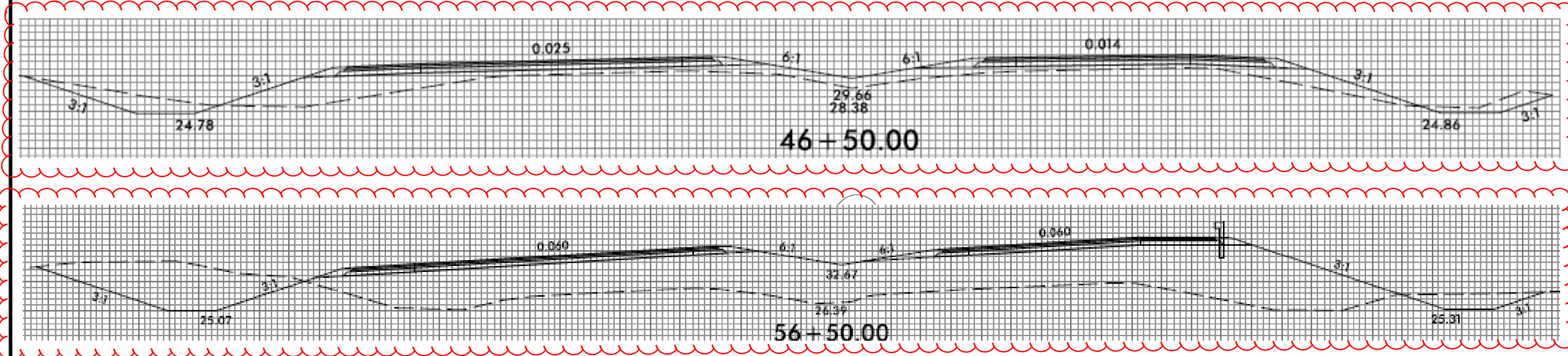
UTILITIES BY OTHERS

NOTE:
ALL UTILITY WORK SHOWN ON THIS SHEET WILL BE DONE BY OTHERS. NO PAYMENT WILL BE MADE TO THE CONTRACTOR FOR UTILITY WORK SHOWN ON THIS SHEET.

Maintain minimum OSHA clearance distances at all times per OSHA 1926.1408

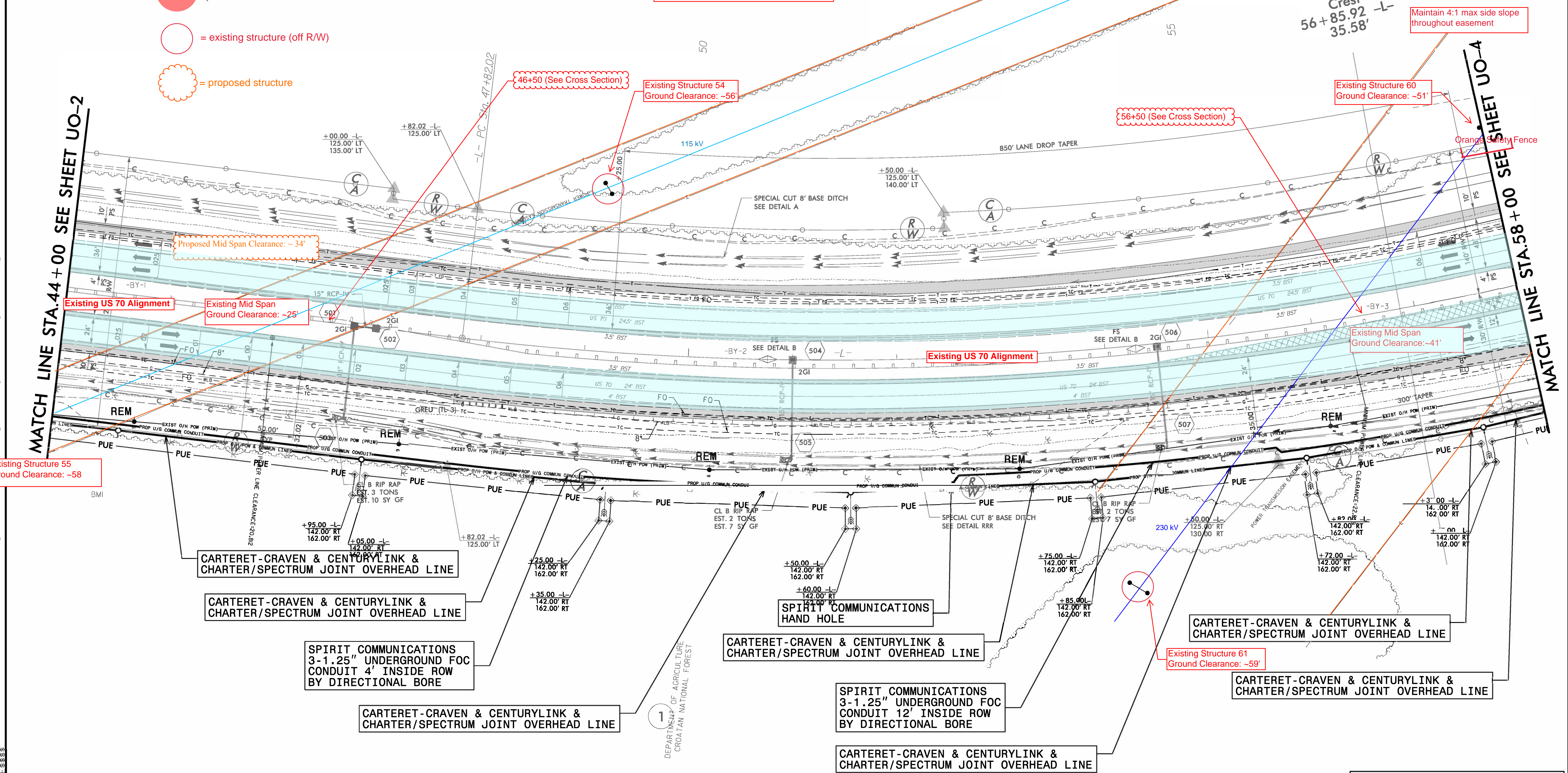
Relocation anticipated Fall 2019

Duke Energy Transmission
Minimum Vertical Clearance:
115 kV: 30'
230 kV: 32'



- orange safety fence (25' radius around structure)
- = existing structure (off R/W)
- = proposed structure

Duke Energy "Site 8"



MATCH LINE STA. 44 + 00 SEE SHEET UO-2

MATCH LINE STA. 58 + 00 SEE SHEET UO-4

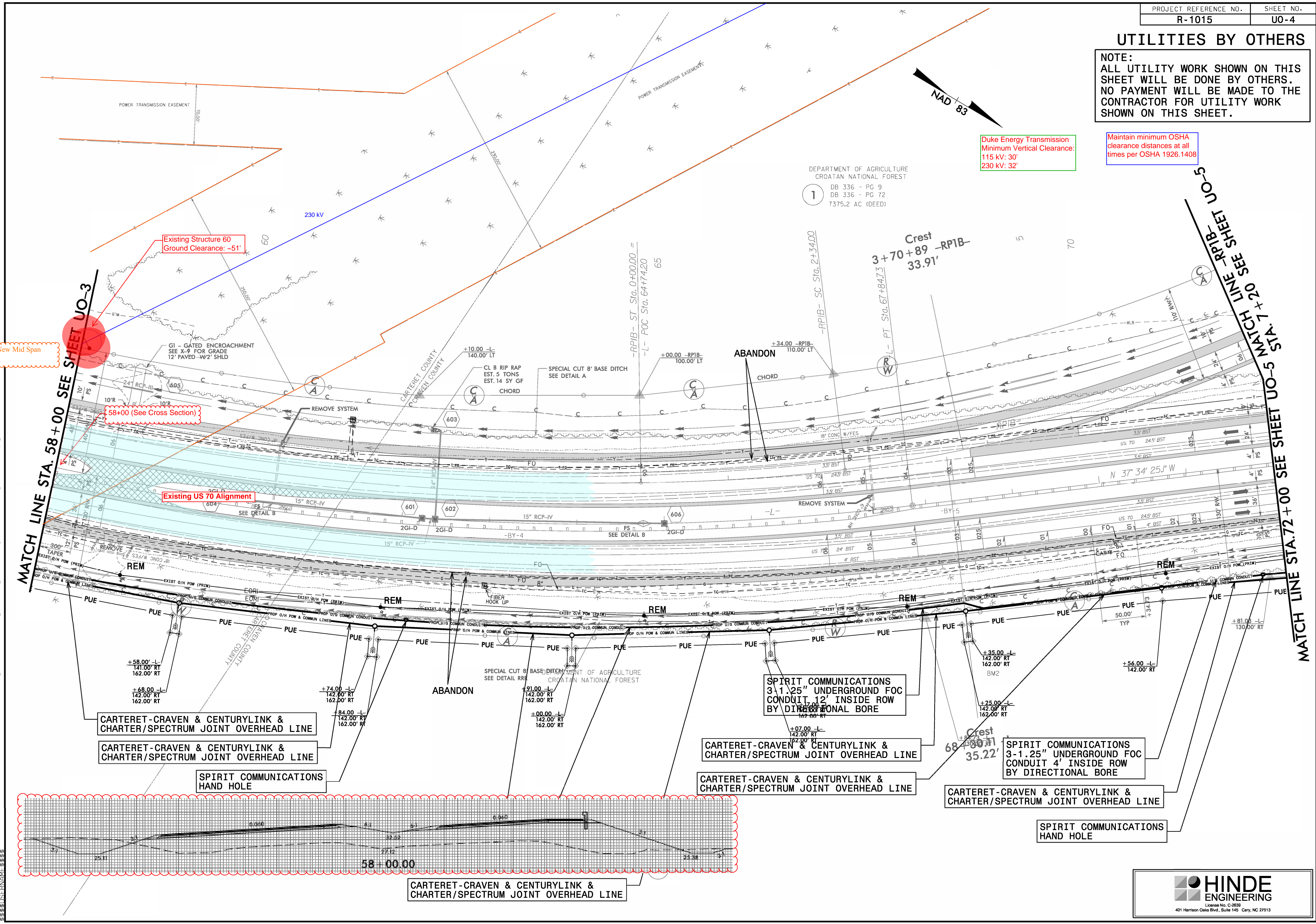
20 NOV 2019 16:19 PROJ: R-1015\A2015501.000 NCDDT R-1015\A2015501.000\UT-1015-UT-RDY5-U03.psh.dgn

UTILITIES BY OTHERS

NOTE:
ALL UTILITY WORK SHOWN ON THIS SHEET WILL BE DONE BY OTHERS. NO PAYMENT WILL BE MADE TO THE CONTRACTOR FOR UTILITY WORK SHOWN ON THIS SHEET.

Duke Energy Transmission
Minimum Vertical Clearance:
115 kV: 30'
230 kV: 32'

Maintain minimum OSHA
clearance distances at all
times per OSHA 1926.1408



Line Not Yet Designed-New Mid Span
Clearance Unknown

Existing Structure 60
Ground Clearance: ~51'

58+00 (See Cross Section)

Existing US 70 Alignment

MATCH LINE STA. 58+00 SEE SHEET U0-3

MATCH LINE STA. 72+00 SEE SHEET U0-5

CARTERET-CRAVEN & CENTURYLINK & CHARTER/SPECTRUM JOINT OVERHEAD LINE

CARTERET-CRAVEN & CENTURYLINK & CHARTER/SPECTRUM JOINT OVERHEAD LINE

SPIRIT COMMUNICATIONS HAND HOLE

CARTERET-CRAVEN & CENTURYLINK & CHARTER/SPECTRUM JOINT OVERHEAD LINE

CARTERET-CRAVEN & CENTURYLINK & CHARTER/SPECTRUM JOINT OVERHEAD LINE

CARTERET-CRAVEN & CENTURYLINK & CHARTER/SPECTRUM JOINT OVERHEAD LINE

SPIRIT COMMUNICATIONS HAND HOLE

CARTERET-CRAVEN & CENTURYLINK & CHARTER/SPECTRUM JOINT OVERHEAD LINE

20-Nov-2016 16:27 PROJECTS\2015\A2015501.00 NCDDT R-1015\Design\Utilities\Engineering\UBO\Proj\1015_ut_rdy6_U04_psh.dgn

UTILITIES BY OTHERS

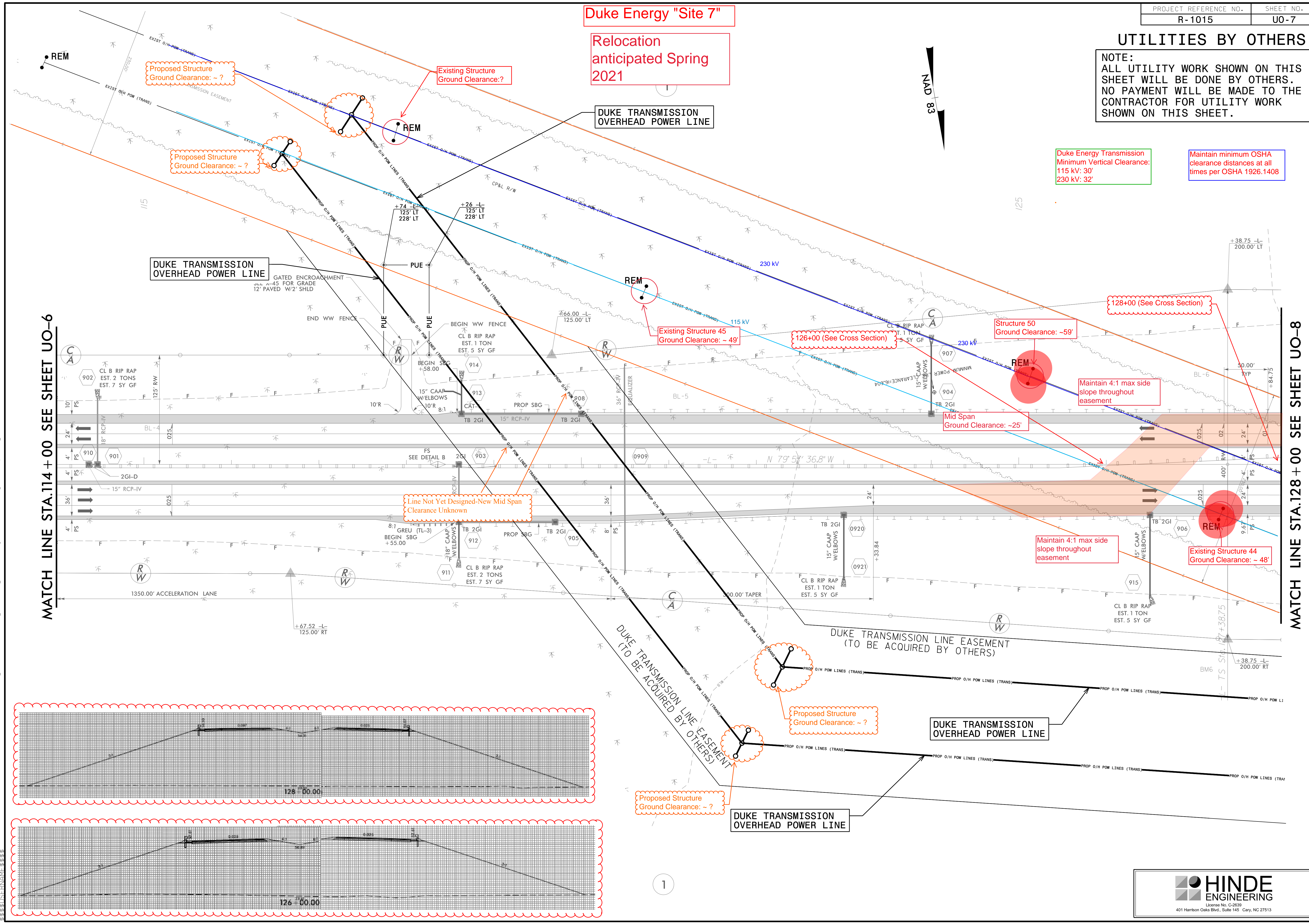
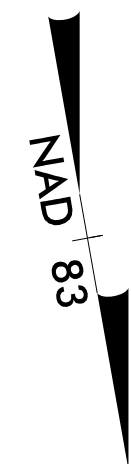
NOTE:
ALL UTILITY WORK SHOWN ON THIS SHEET WILL BE DONE BY OTHERS. NO PAYMENT WILL BE MADE TO THE CONTRACTOR FOR UTILITY WORK SHOWN ON THIS SHEET.

Duke Energy Transmission
Minimum Vertical Clearance:
115 kV: 30'
230 kV: 32'

Maintain minimum OSHA
clearance distances at all
times per OSHA 1926.1408

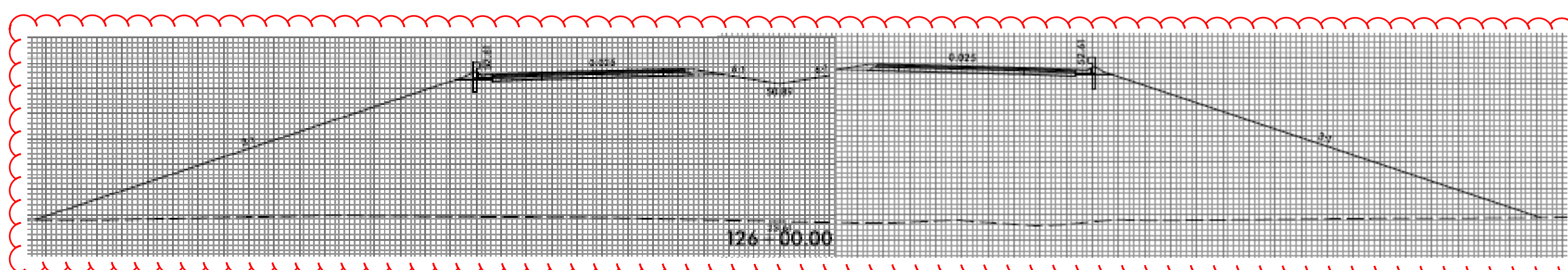
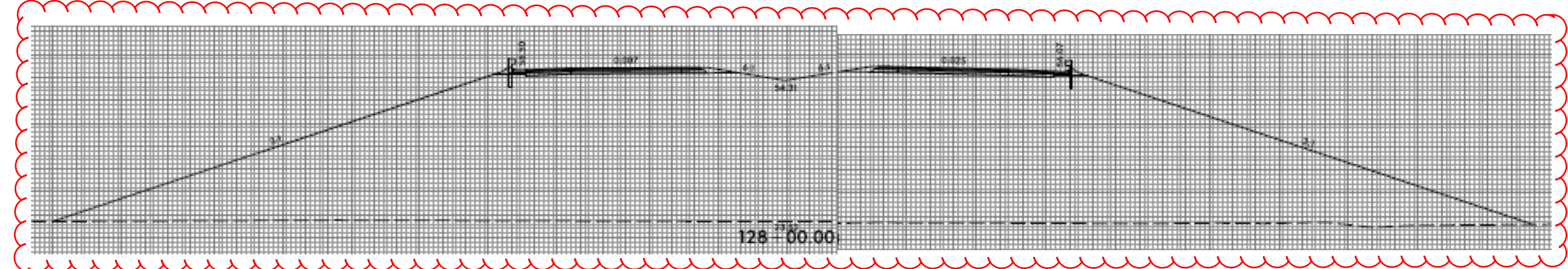
Duke Energy "Site 7"

Relocation
anticipated Spring
2021



MATCH LINE STA. 114 + 00 SEE SHEET UO-6

MATCH LINE STA. 128 + 00 SEE SHEET UO-8



Proposed Structure
Ground Clearance: ~ ?

Proposed Structure
Ground Clearance: ~ ?

DUKE TRANSMISSION
OVERHEAD POWER LINE

DUKE TRANSMISSION
OVERHEAD POWER LINE

Line Not Yet Designed-New Mid Span
Clearance Unknown

1

20-Nov-2018 16:31 \\projects\2015\A2015501.00 NCDOT R-1015\Design\Utilities\Engineering\UBO\Proj\1015.ut_rdy9_U07_psh.dgn

UTILITIES BY OTHERS

NOTE:
ALL UTILITY WORK SHOWN ON THIS SHEET WILL BE DONE BY OTHERS. NO PAYMENT WILL BE MADE TO THE CONTRACTOR FOR UTILITY WORK SHOWN ON THIS SHEET.

DEPARTMENT OF AGRICULTURE
CROATAN NATIONAL FOREST
DB 336 PG 9
DB 636 PG 72
7375.2 AC (DEED)

Duke Energy "Site 6"

Relocation anticipated Spring 2021

Duke Energy Transmission
Minimum Vertical Clearance:
115 kV: 30'
230 kV: 32'

Maintain minimum OSHA clearance distances at all times per OSHA 1926.1408

Maintain 4:1 max side slope throughout easement

Existing Mid Span Ground Clearance: ~30

Line Not Yet Designed-New Mid Span Clearance Unknown

Maintain 4:1 max side slope throughout easement

Structure 49
Ground Clearance: ~49'

Mid Span Ground Clearance: ~25

DUKE TRANSMISSION OVERHEAD POWER LINE

Structure 43
Ground Clearance: ~47'

Proposed Structure
Ground Clearance: ~ ?

DUKE TRANSMISSION OVERHEAD POWER LINE

DUKE TRANSMISSION LINE EASEMENT (TO BE ACQUIRED BY OTHERS)

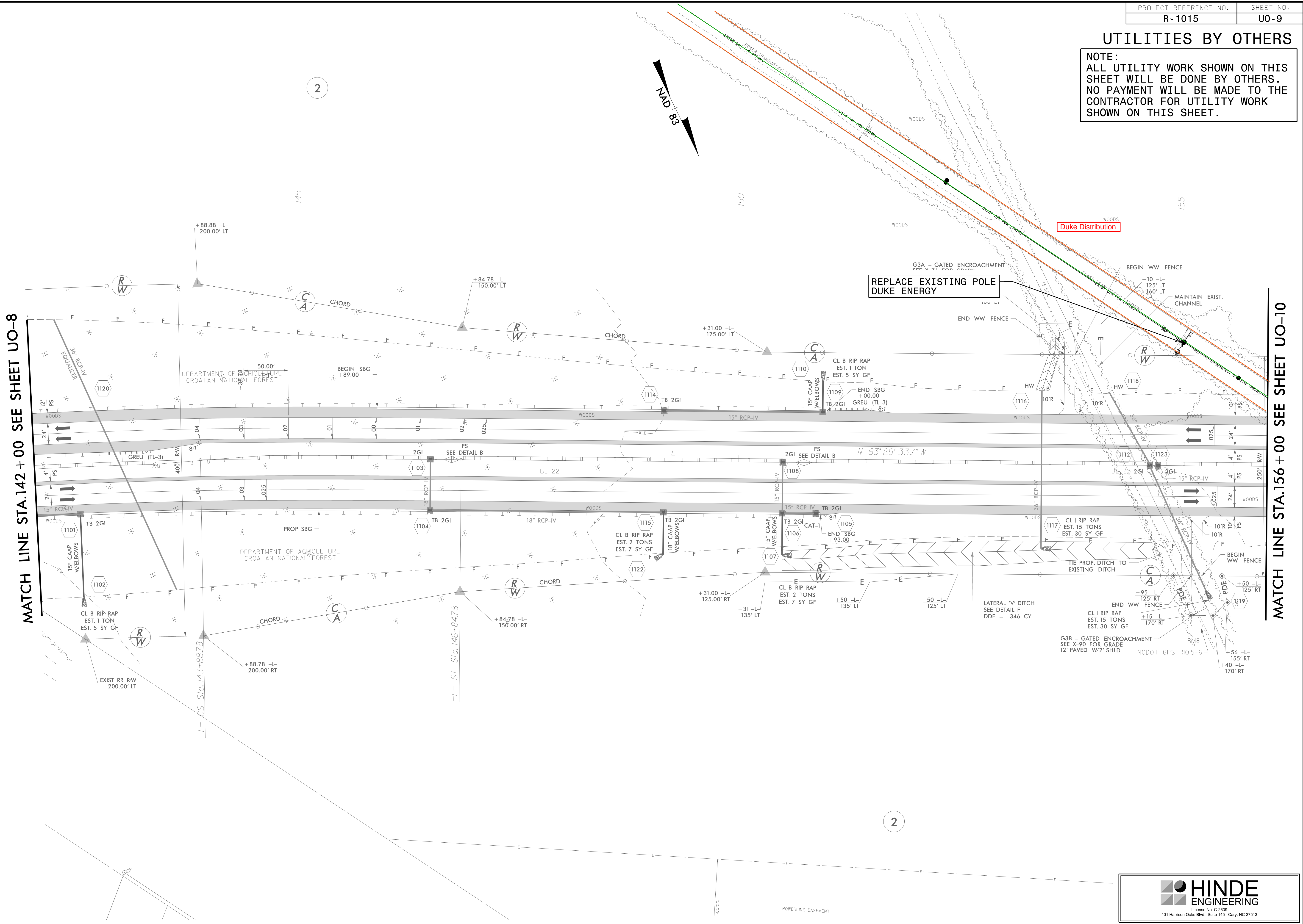
DUKE TRANSMISSION OVERHEAD POWER LINE

DUKE TRANSMISSION OVERHEAD POWER LINE

20 NOV 2018 16:32 C:\S\PROJECTS\2015\A2015501.00 NCDOT R-1015\Design\Utilities\Engineering\UBO\Proj\N-1015-UBO-ESH.dgn
 20 NOV 2018 16:32 C:\S\PROJECTS\2015\A2015501.00 NCDOT R-1015\Design\Utilities\Engineering\UBO\Proj\N-1015-UBO-ESH.dgn

UTILITIES BY OTHERS

NOTE:
 ALL UTILITY WORK SHOWN ON THIS SHEET WILL BE DONE BY OTHERS. NO PAYMENT WILL BE MADE TO THE CONTRACTOR FOR UTILITY WORK SHOWN ON THIS SHEET.



MATCH LINE STA.142 + 00 SEE SHEET UO-8

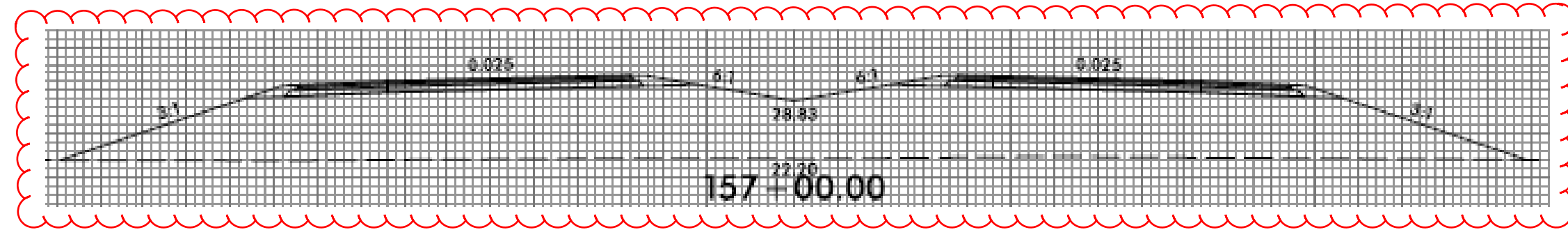
MATCH LINE STA.156 + 00 SEE SHEET UO-10

20 NOV 2018 16:53 C:\S:\PROJECTS\2015\A2015501\00 NCDOT R-1015\Design\Utilities\Engineering\UBO\Proj\1015_ut_rdy11_U09_psh.dgn

UTILITIES BY OTHERS

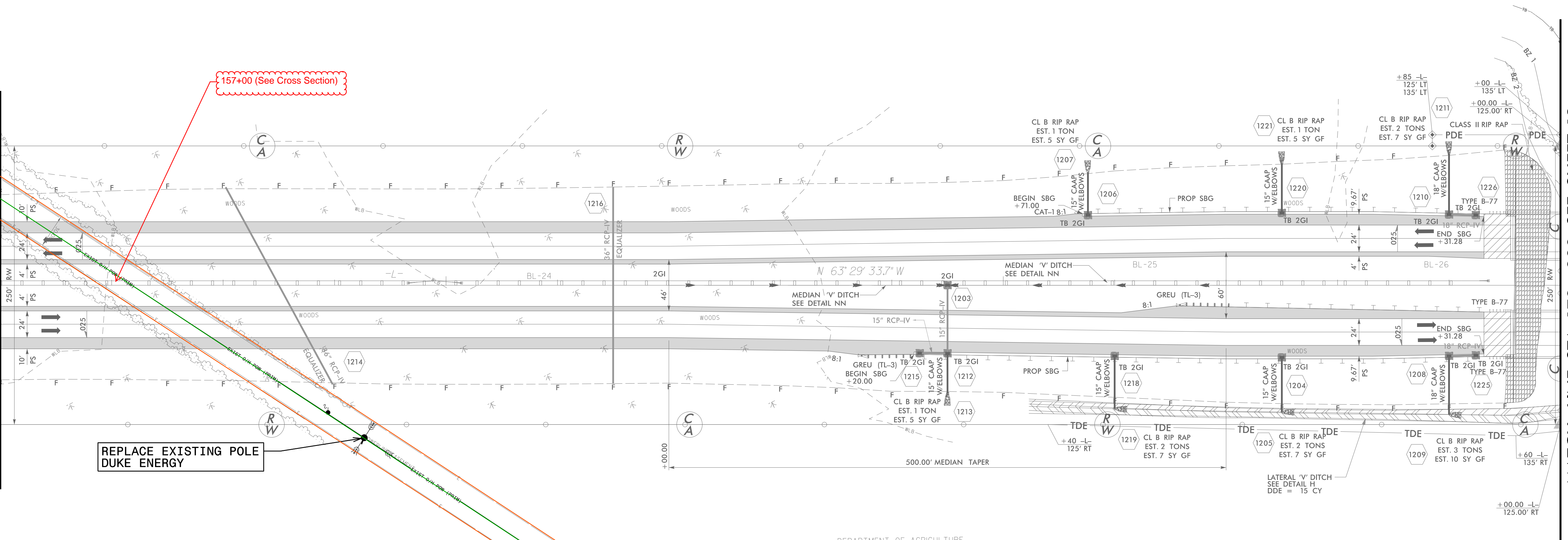
NOTE:
ALL UTILITY WORK SHOWN ON THIS SHEET WILL BE DONE BY OTHERS. NO PAYMENT WILL BE MADE TO THE CONTRACTOR FOR UTILITY WORK SHOWN ON THIS SHEET.

Maintain minimum OSHA clearance distances at all times per OSHA 1926.1408



DEPARTMENT OF AGRICULTURE
CROATAN NATIONAL FOREST

MATCH LINE STA. 156 + 00 SEE SHEET UO-9



MATCH LINE STA. 170 + 000 SEE SHEET 13

DEPARTMENT OF AGRICULTURE
CROATAN NATIONAL FOREST

Duke Distribution

REPLACE EXISTING POLE
DUKE ENERGY

20 NOV 2018 16:35 PROJECTS\2015\A2015501.00 NCDOT R-1015\Design\Utilities\Engineering\UBO\Proj\1015_ut_rdy12_U010_psh.dgn

UTILITIES BY OTHERS

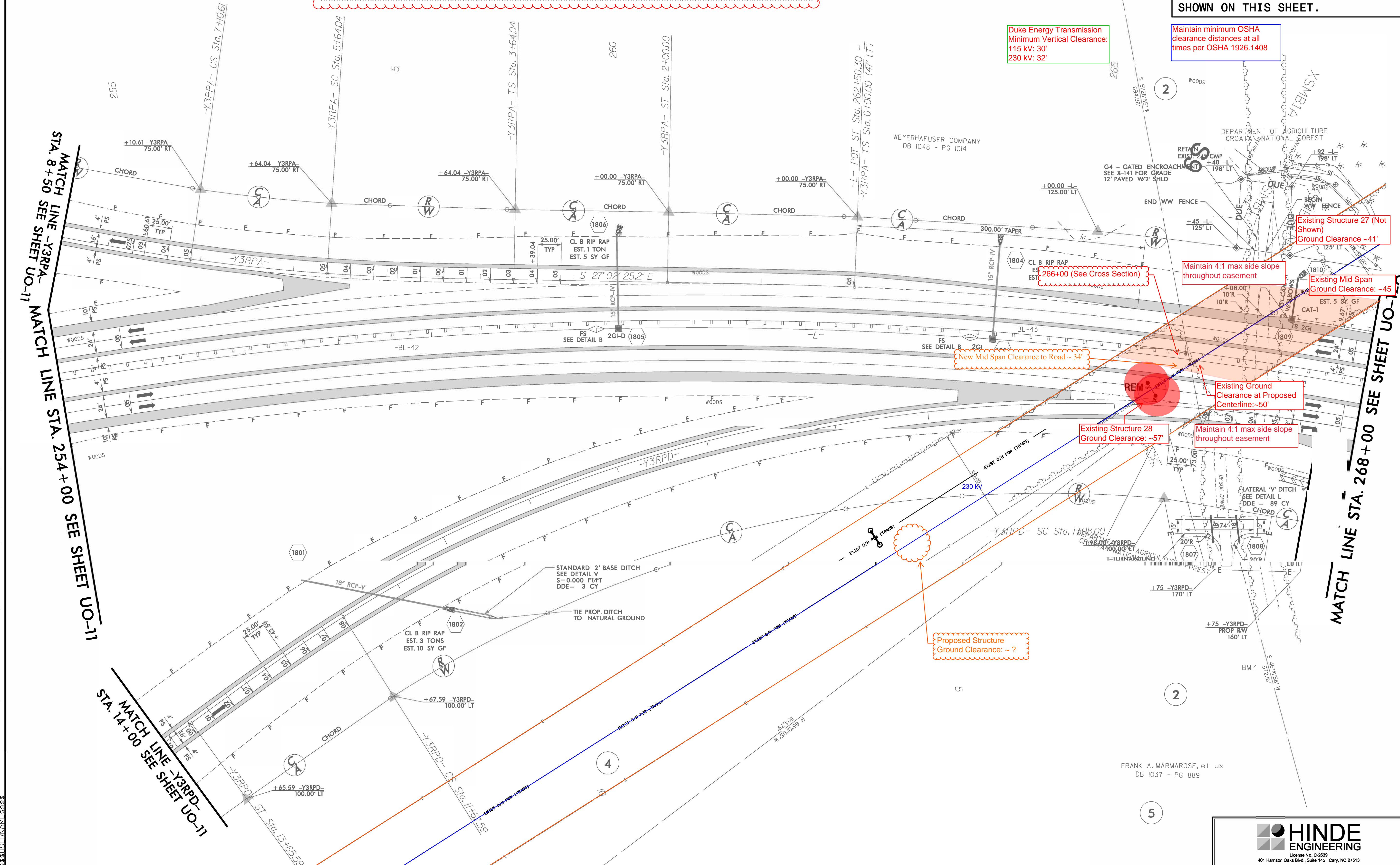
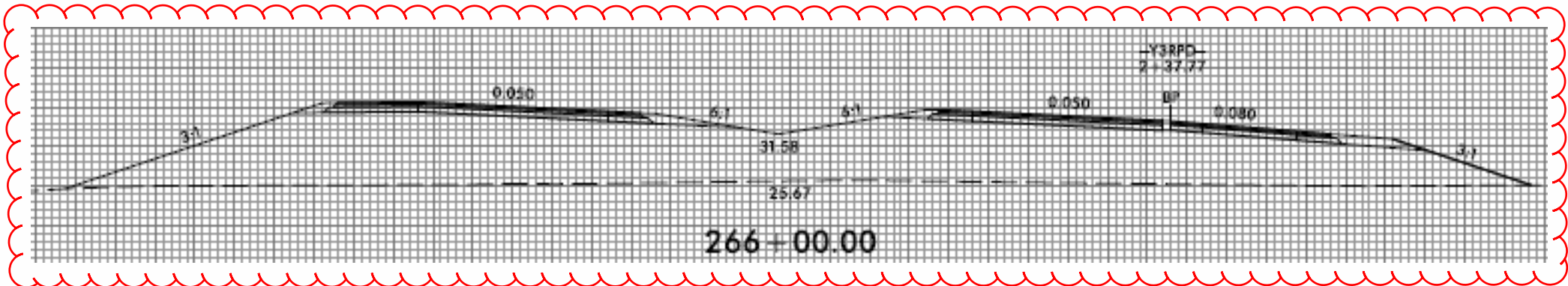
NOTE:
ALL UTILITY WORK SHOWN ON THIS SHEET WILL BE DONE BY OTHERS. NO PAYMENT WILL BE MADE TO THE CONTRACTOR FOR UTILITY WORK SHOWN ON THIS SHEET.

Maintain minimum OSHA clearance distances at all times per OSHA 1926.1408

Duke Energy "Site 5"

Relocation anticipated Fall 2019

Duke Energy Transmission
Minimum Vertical Clearance:
115 kV: 30'
230 kV: 32'

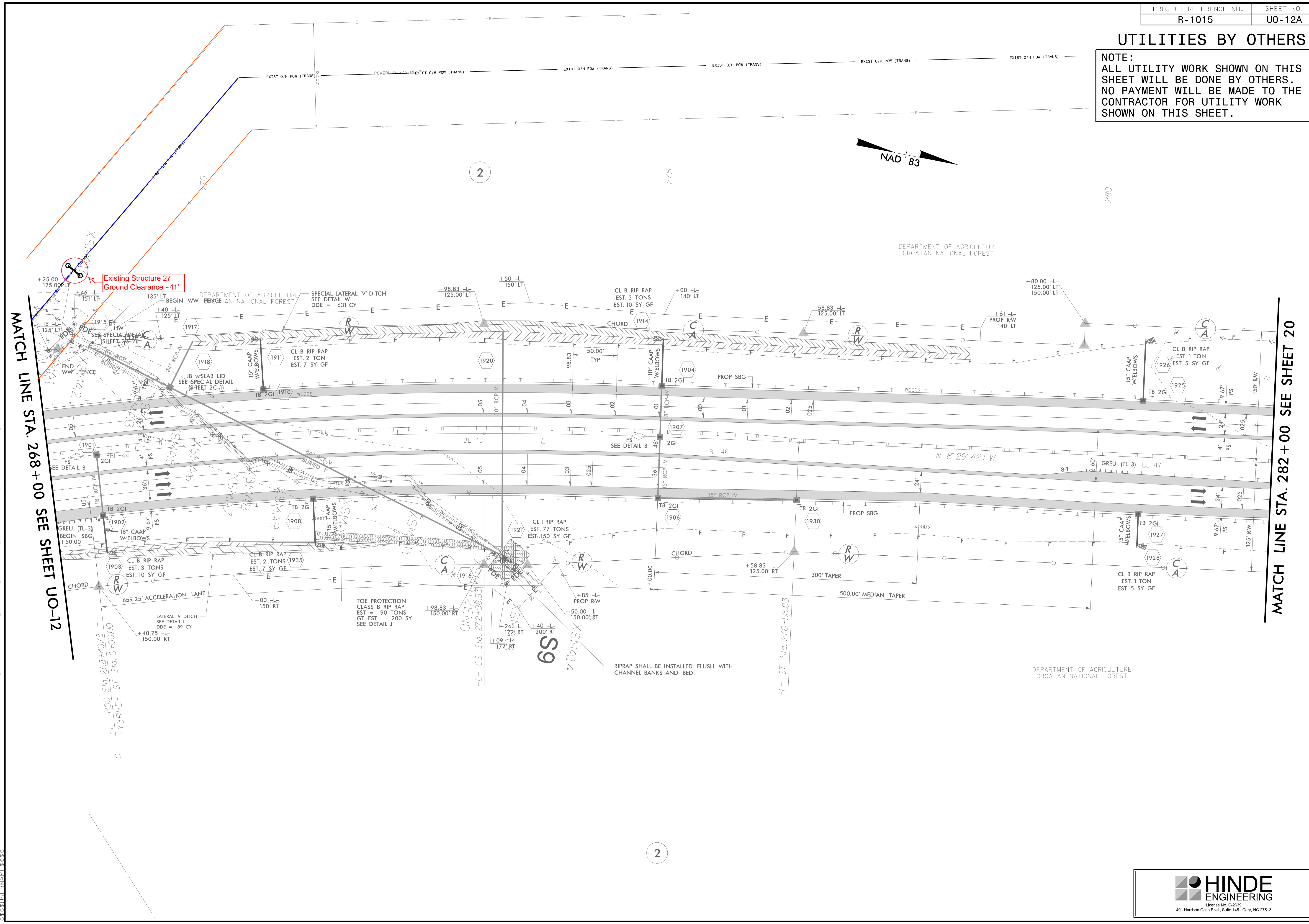


20 NOV 2018 16:40 PROJECTS\2015\A2015501.00 NCDDT R-1015\Design\Utilities\Engineering\UBO\Proj\N-1015_ut_r.dwg UO12.psh.dgn

FRANK A. MARMAROSE, et ux
DB 1037 - PG 889

UTILITIES BY OTHERS

NOTE:
ALL UTILITY WORK SHOWN ON THIS SHEET WILL BE DONE BY OTHERS. NO PAYMENT WILL BE MADE TO THE CONTRACTOR FOR UTILITY WORK SHOWN ON THIS SHEET.

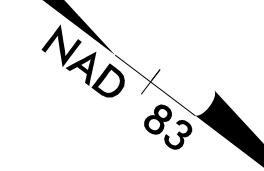


20 NOV 2018 16:57 PROJECTS\2015\A2015501.000 NCDOT R-1015\Design\Utilities\Engineering\UBO\Proj\1015.ut_r.dwg UO12A.psh.dgn
 0 -L- POC Sta. 268+40.75 =
 -Y3RPD- ST Sta. 0+100.00

UTILITIES BY OTHERS

NOTE:
ALL UTILITY WORK SHOWN ON THIS SHEET WILL BE DONE BY OTHERS. NO PAYMENT WILL BE MADE TO THE CONTRACTOR FOR UTILITY WORK SHOWN ON THIS SHEET.

Maintain minimum OSHA clearance distances at all times per OSHA 1926.1408



SEE PROJECT COMMITMENTS FOR SPECIAL CLEARING FOR
-L- STA. 338+00 TO 393+00

MATCH LINE STA. 380 + 00 SEE SHEET UO-15

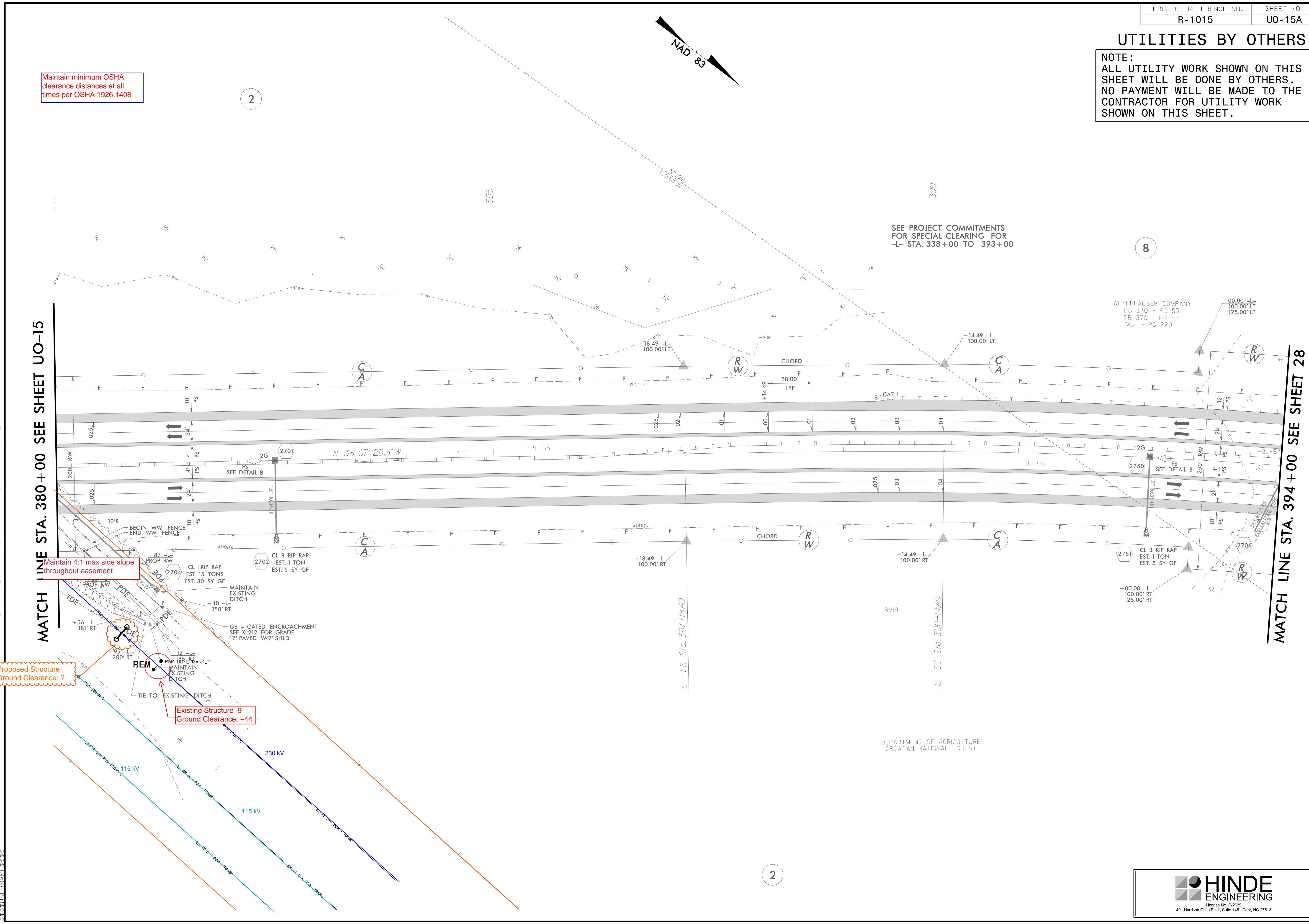
MATCH LINE STA. 394 + 00 SEE SHEET 28

Maintain 4:1 max side slope throughout easement

Existing Structure 9
Ground Clearance: -44'

Proposed Structure
Ground Clearance: ?

C:\Users\1746\Projects\2015\A2015501.000_NCDOT_R-1015\Drawings\Utilities\Engineering\UBO\Proj\1015.ut_rdy27_UO15A_psh.dgn

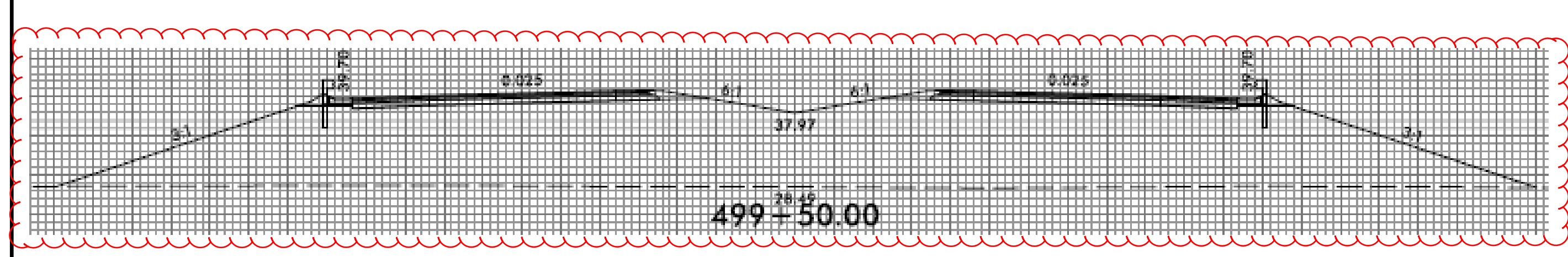


UTILITIES BY OTHERS

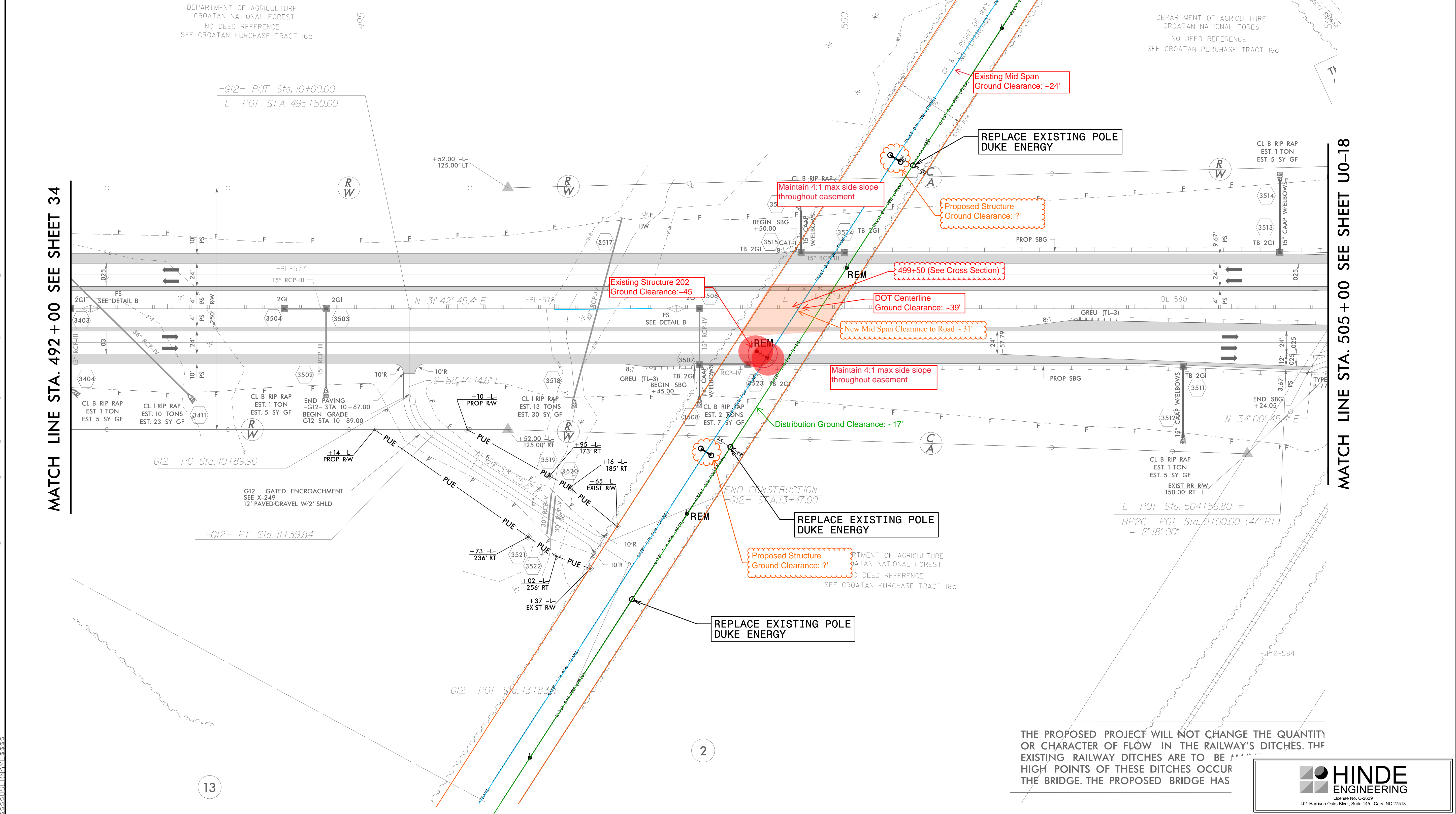
NOTE:
ALL UTILITY WORK SHOWN ON THIS SHEET WILL BE DONE BY OTHERS. NO PAYMENT WILL BE MADE TO THE CONTRACTOR FOR UTILITY WORK SHOWN ON THIS SHEET.

Duke Energy Transmission
Minimum Vertical Clearance:
115 kV: 30'
230 kV: 32'

Maintain minimum OSHA
clearance distances at all
times per OSHA 1926.1408



Duke Energy
"Site 1"
Anticipated
Relocation
Fall 2019



MATCH LINE STA. 492 + 00 SEE SHEET 34

MATCH LINE STA. 505 + 00 SEE SHEET U0-18

THE PROPOSED PROJECT WILL NOT CHANGE THE QUANTITY OR CHARACTER OF FLOW IN THE RAILWAY'S DITCHES. THE EXISTING RAILWAY DITCHES ARE TO BE MAINTAINED AT ALL HIGH POINTS OF THESE DITCHES OCCUR UNDER THE BRIDGE. THE PROPOSED BRIDGE HAS

C:\NOV-2018\1720\PROJECTS\2015\A2015501.00\NCDDOT_R-1015\Design\Utilities\Engineering\UBO\Proj\1015_ut_rdy35_U017_psh.dgn

UTILITIES BY OTHERS

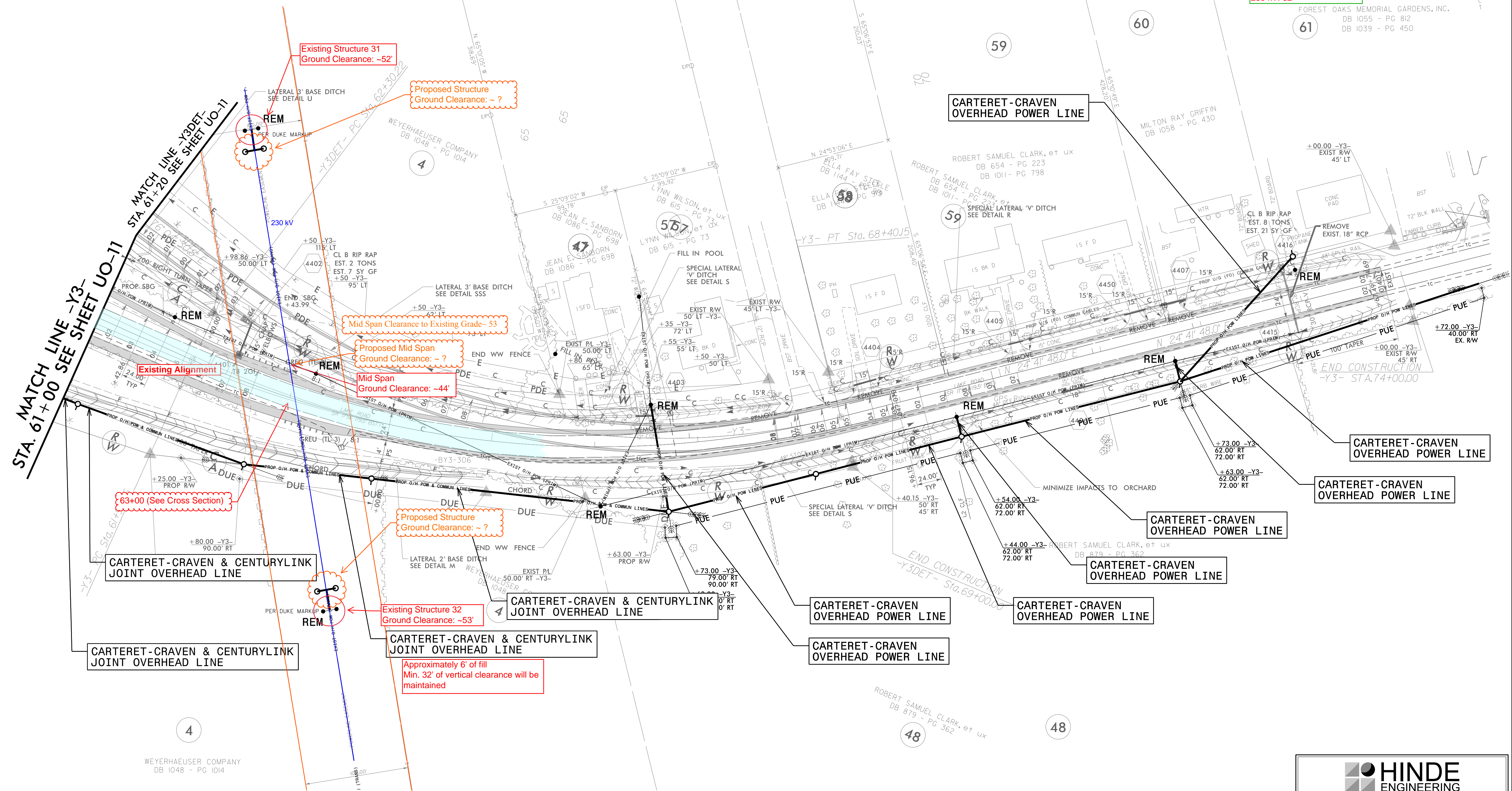
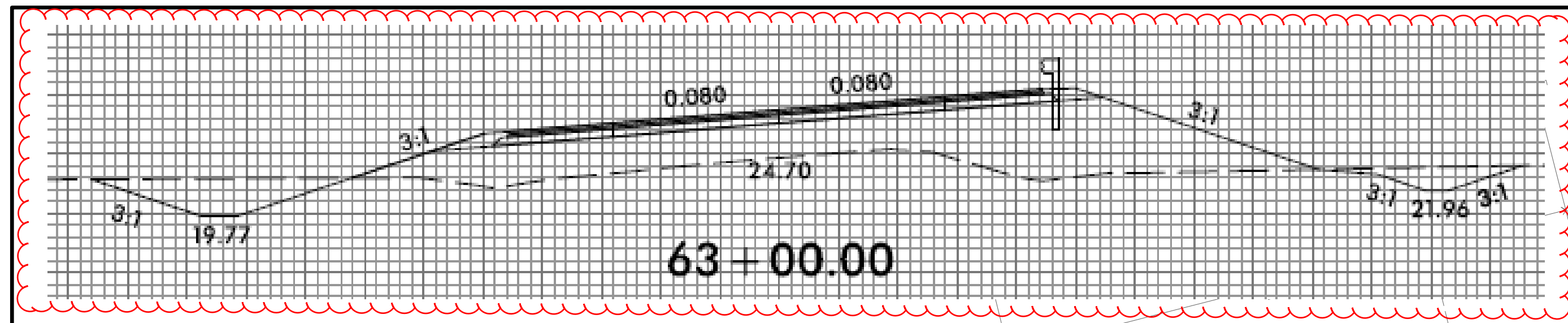
NOTE:
 ALL UTILITY WORK SHOWN ON THIS SHEET WILL BE DONE BY OTHERS. NO PAYMENT WILL BE MADE TO THE CONTRACTOR FOR UTILITY WORK SHOWN ON THIS SHEET.

Maintain minimum OSHA clearance distances at all times per OSHA 1926.1408

Maintain 4:1 max side slope throughout easement

Duke Energy Transmission
 Minimum Vertical Clearance:
 115 kV: 30'
 230 kV: 32'

FOREST OAKS MEMORIAL GARDENS, INC.
 DB 1055 - PG 812
 DB 1039 - PG 450



20 NOV 2018 18:11 \\projects\2015\A2015501.00 NCDOT R-1015\Design\Utilities\Engineering\UBO\Proj-r-1015.ut_rdy44_U025_psh.dgn
 3:58:51 PM
 3:58:51 PM