

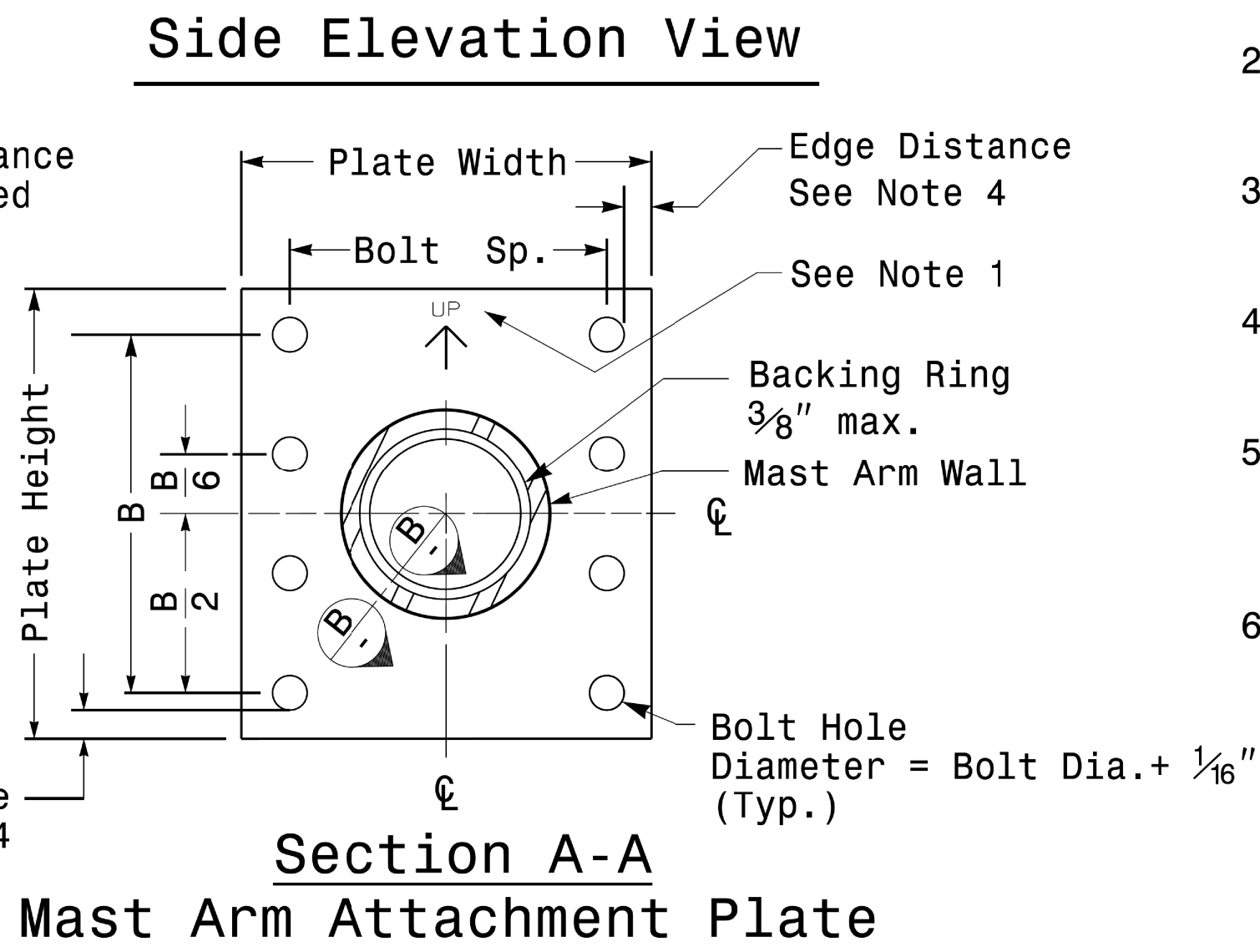
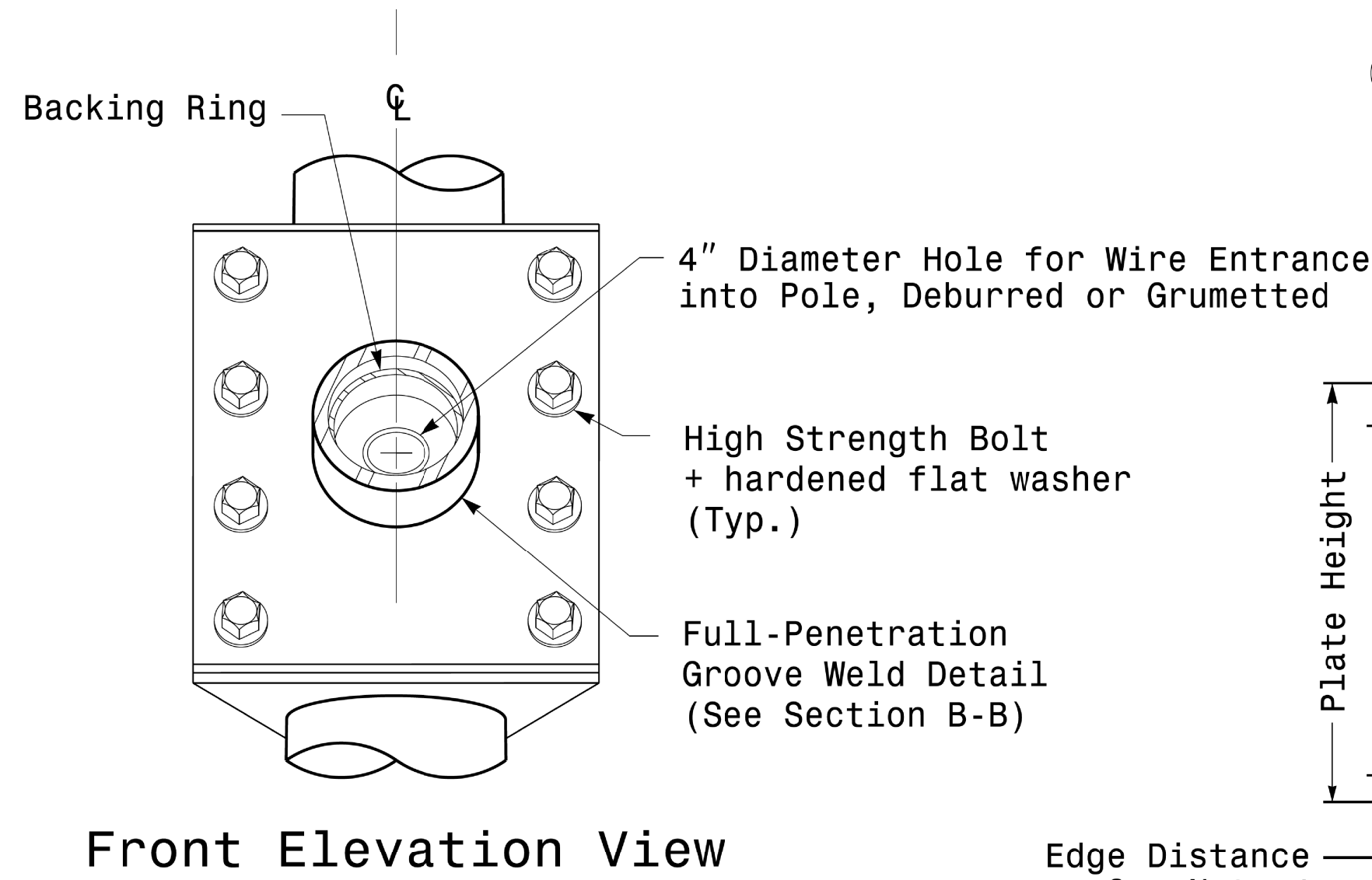
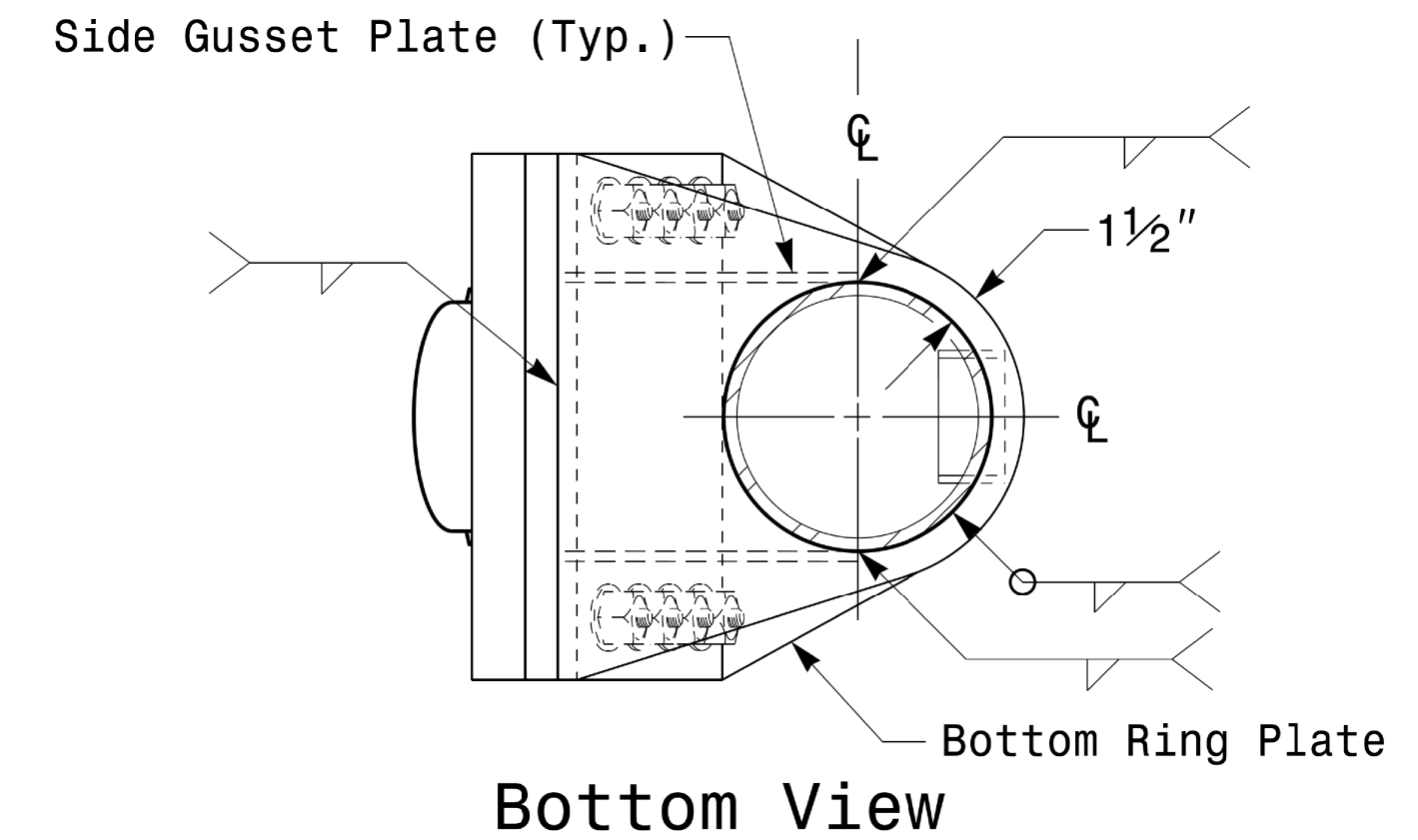
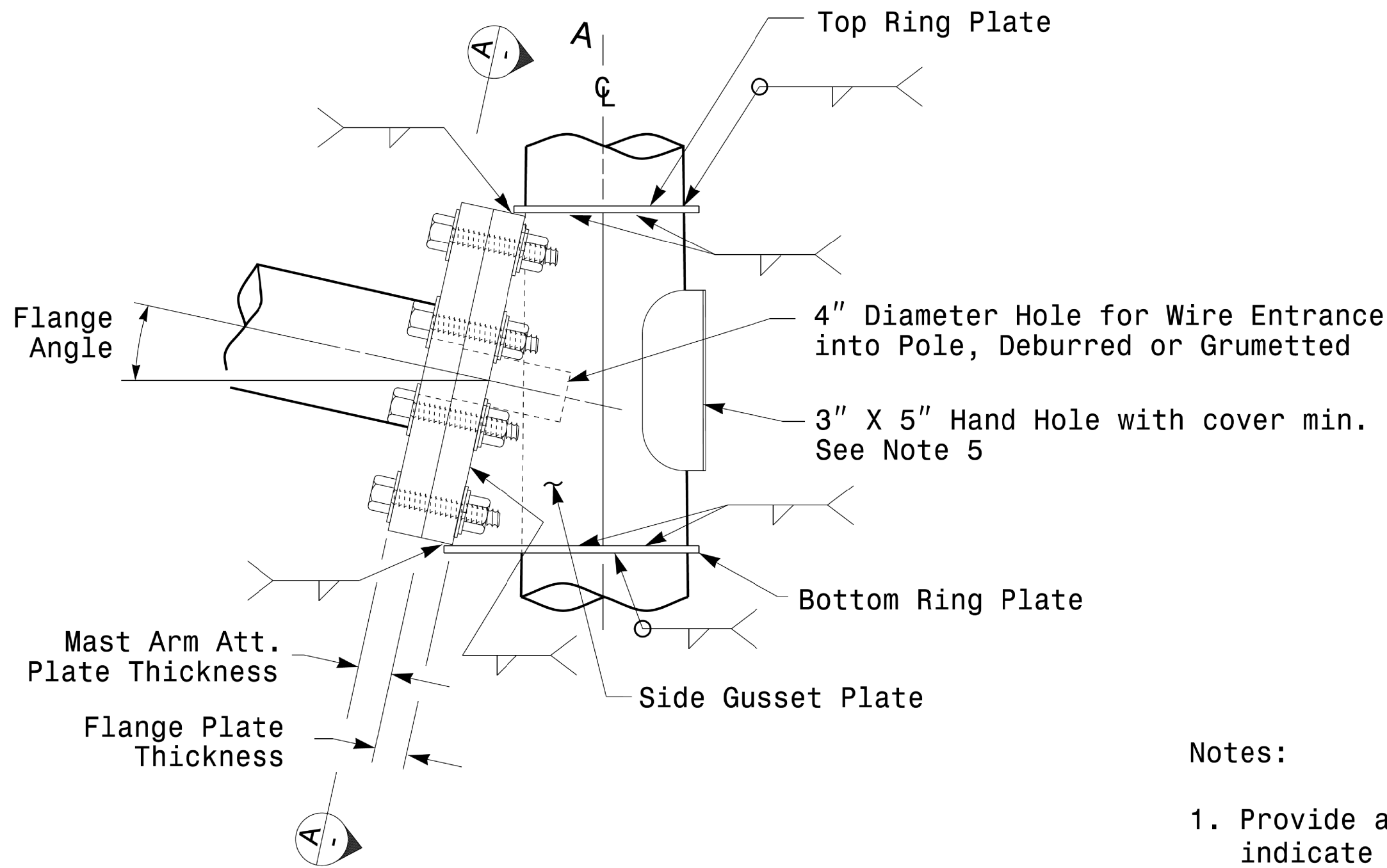
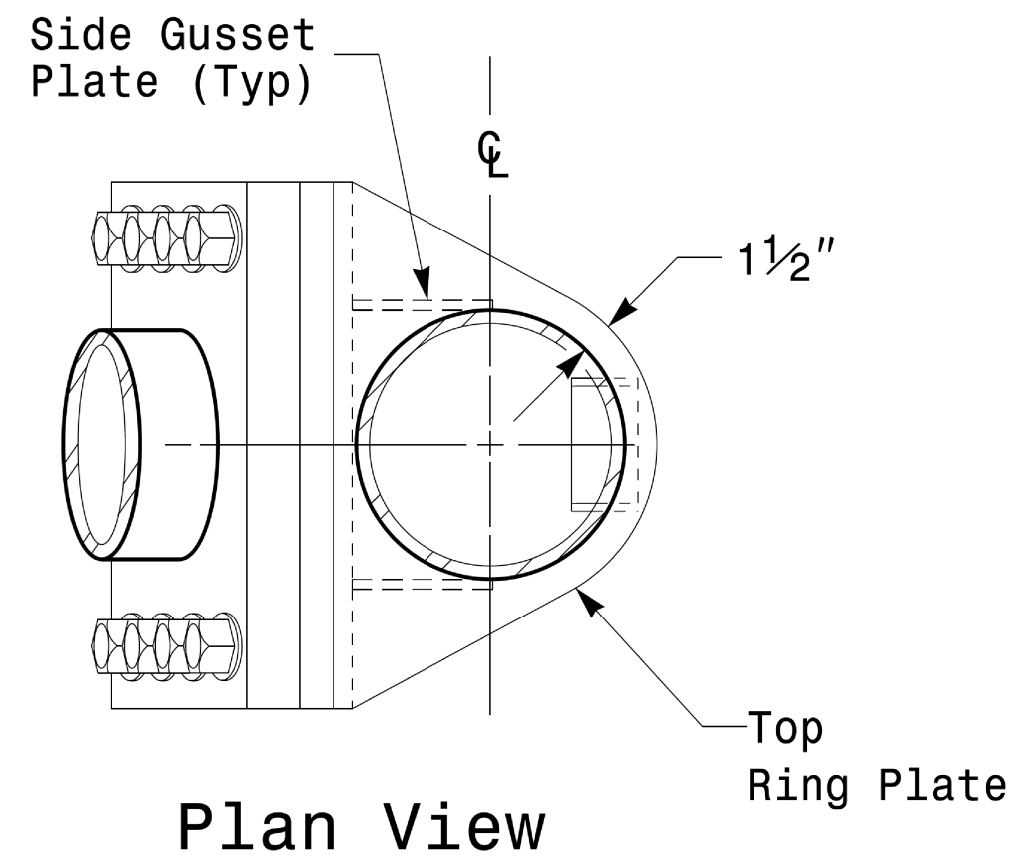
**This electronic collection of documents is provided
for the convenience of the user
and is Not a Certified Document –**

**The documents contained herein were originally issued
and sealed by the individuals whose names and license
numbers appear on each page, on the dates appearing
with their signature on that page.**

**This file or an individual page
shall not be considered a certified document.**

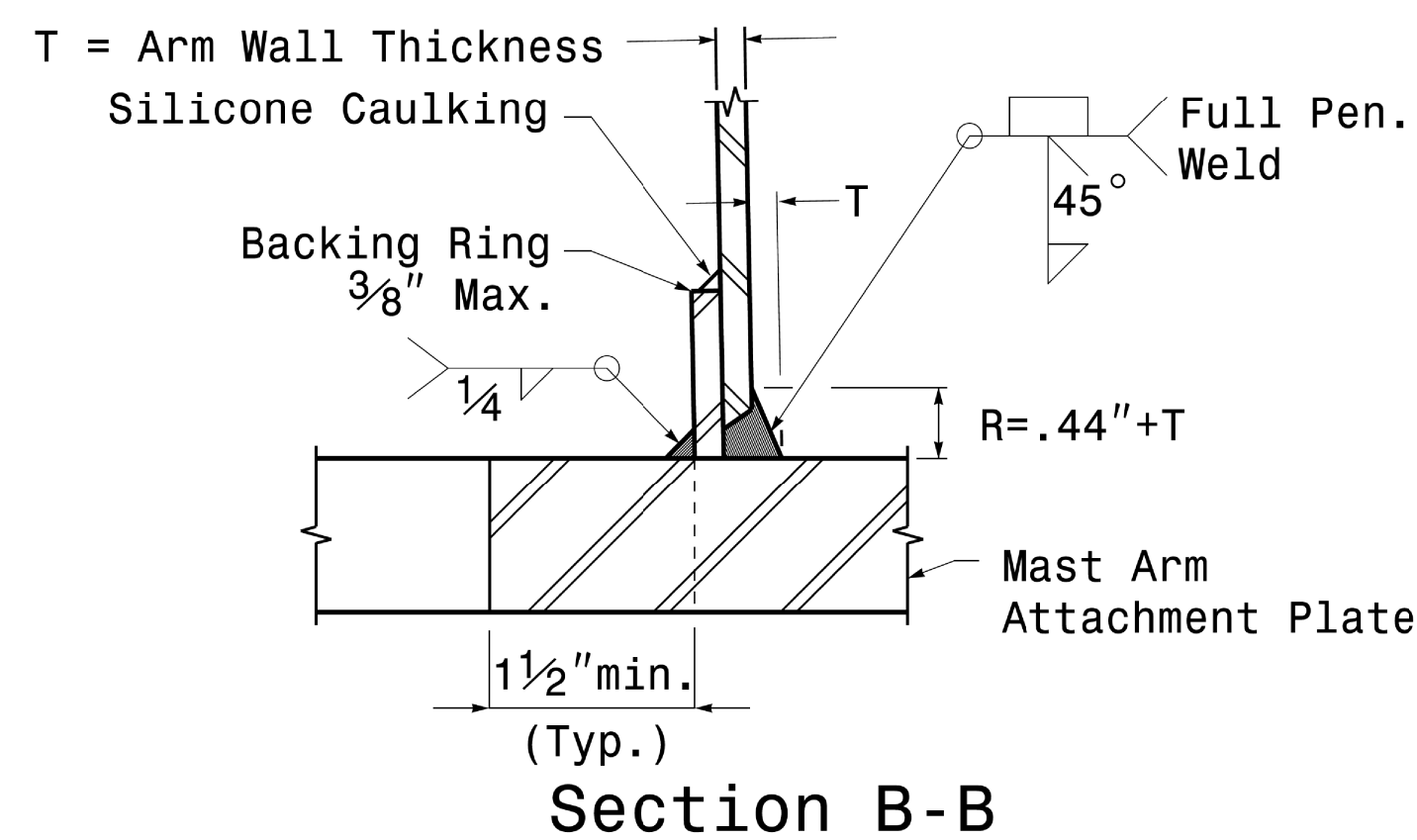
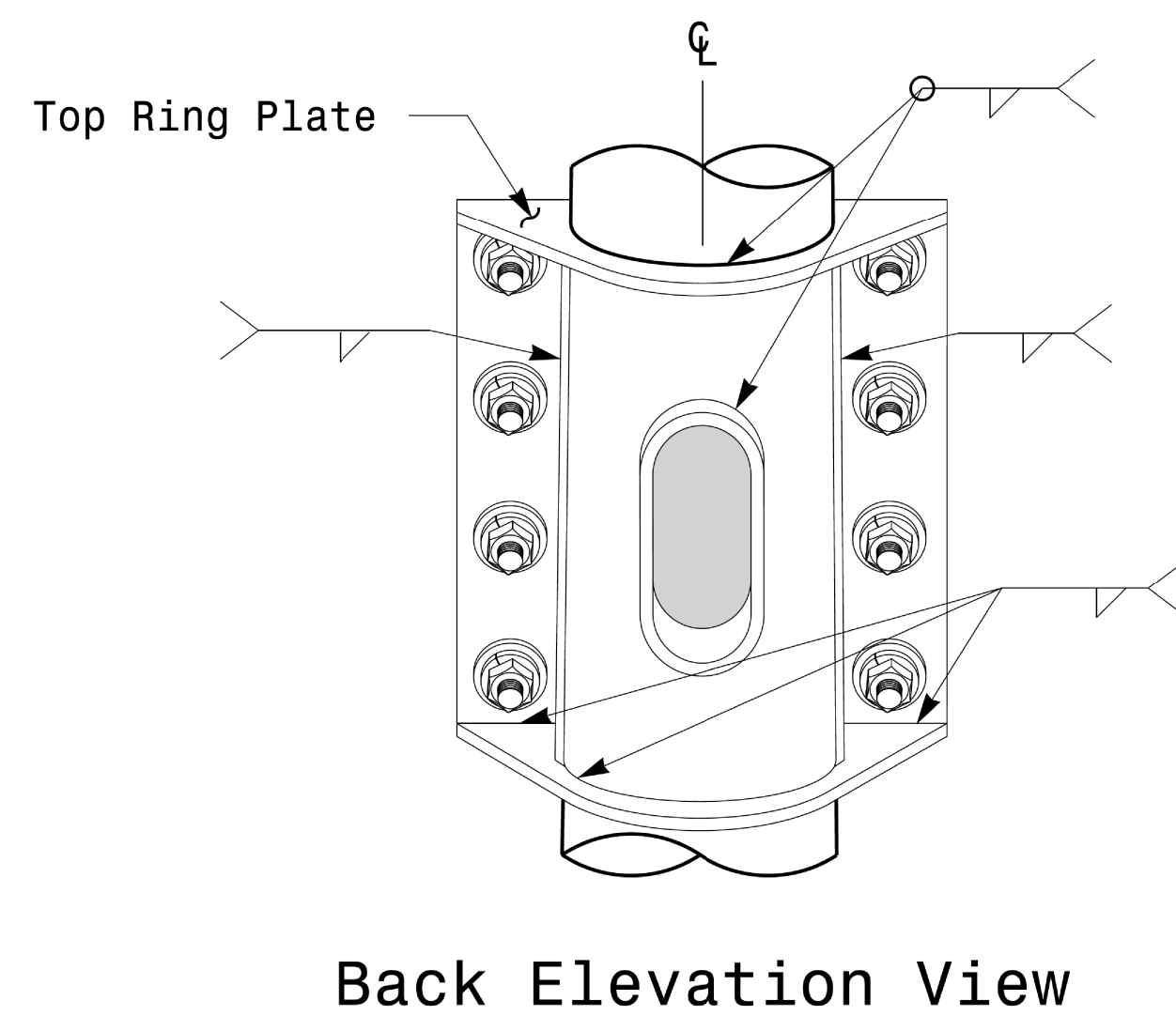
Welded Ring Stiffened Mast Arm Connection

PROJECT ID. NO.	SHEET NO.
I - 4700	Sig.M5



Notes:

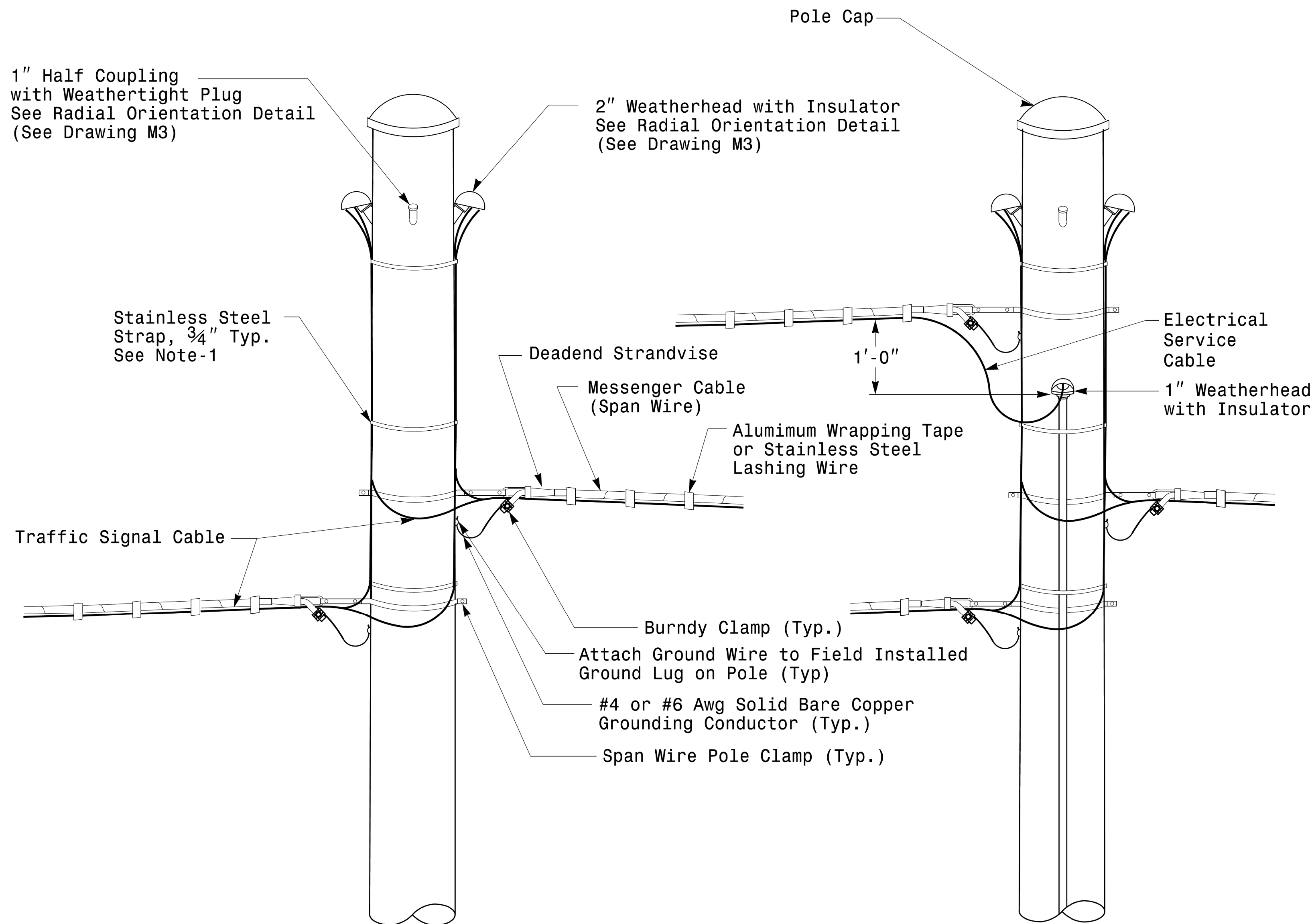
1. Provide a permanent means of identification above the mast arm to indicate proper attachment orientation of the mast arm.
2. Designer will determine the size of all structural components, plates, fasteners, and welds shown unless they are already specified.
3. Fabricator is responsible for providing appropriate holes at drainage points to drain galvanizing materials.
4. For minimum edge distance follow AISC Table J3.4 and J3.5. For nominal bolt hole size use Table J3.3.
5. Provide upper handhole as necessary when shaft extensions are required for luminaire arms or camera. For poles without luminaires/camera, wiring can be done through the top of pole.
6. Allowable range of flange tilt angle will vary from 0° to as required.



Fabrication Details – Mast Arm Connection

11-OCT-2017 08:35 S:\IT&S\UM\IS_Signals\Signal_Design_section\Eastern_Region\MI_Sheets\2016\2014_Sig.M5_Std_Connection_Fabrication_Detail\5-Mast_Arm_Poles.dgn P:\crazer

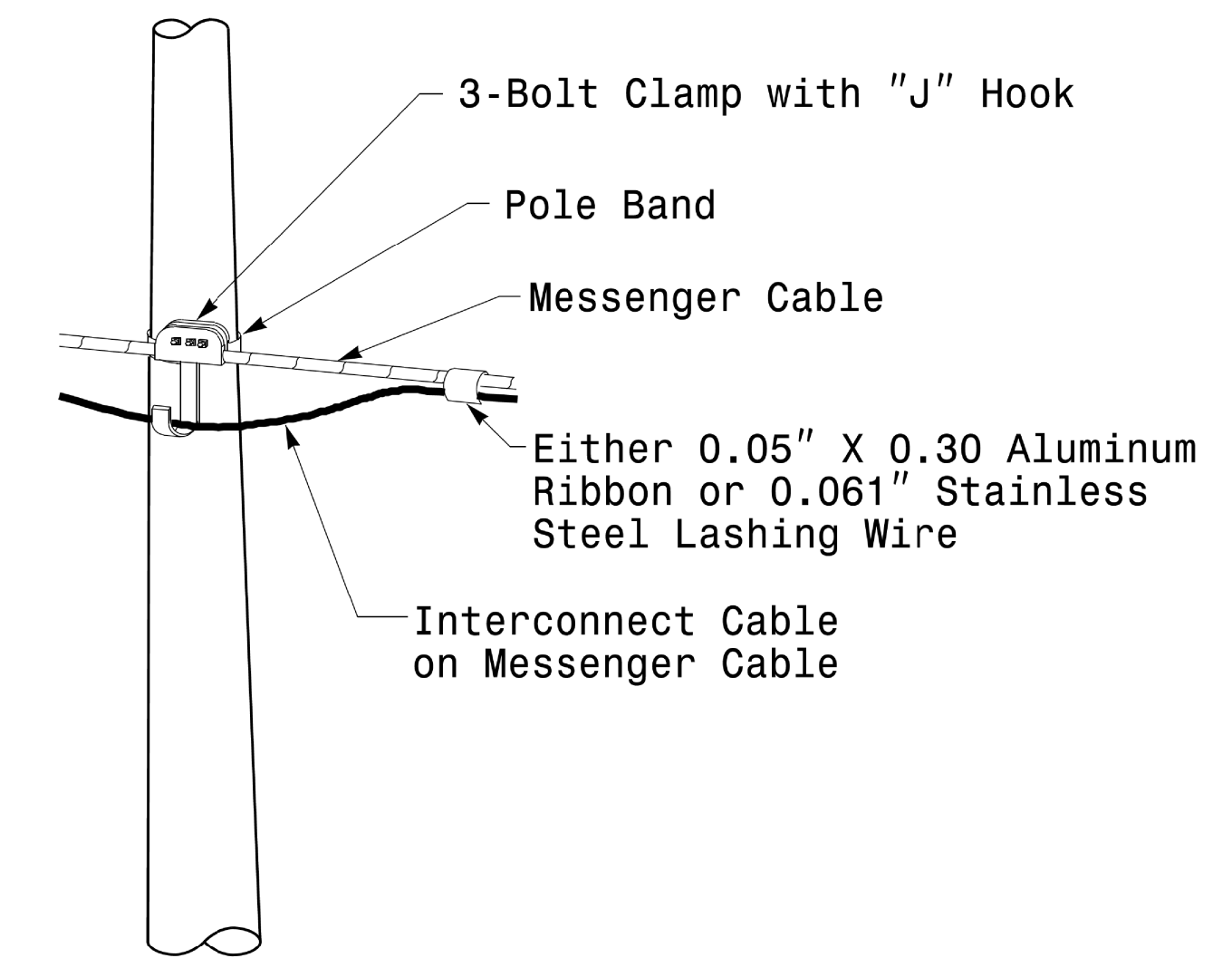
	Typical Fabrication Details For Mast Arm Connection To Pole		
	PLAN DATE: OCTOBER 2017 PREPARED BY: N. BITTING	DESIGNED BY: C.F. ANDREWS REVIEWED BY: D.C. SARKAR	
SCALE: 0 NA NONE	10/11/2017		SEAL NORTH CAROLINA PROFESSIONAL ENGINEER D. C. SARKAR 028094



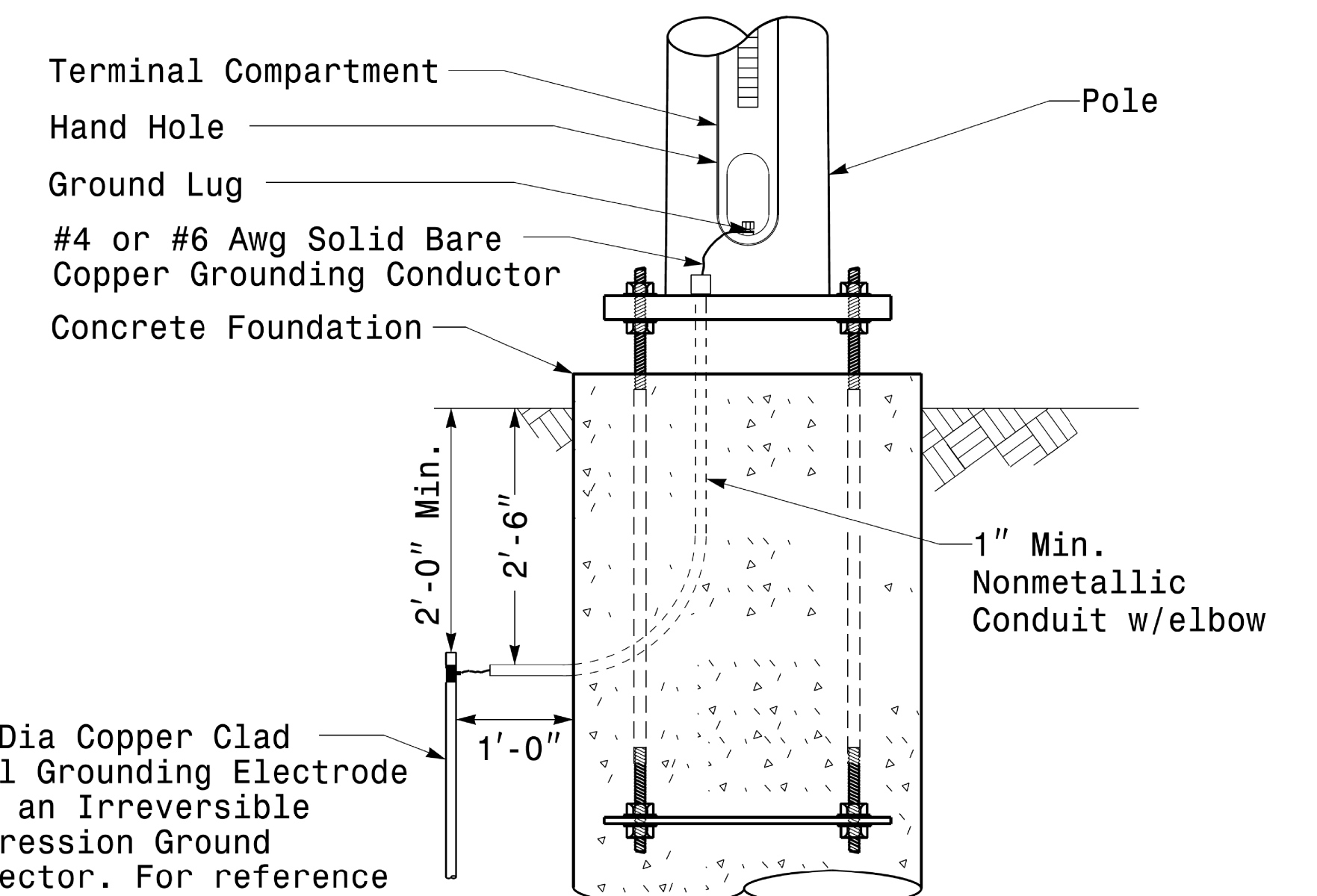
Strain Pole Attachments

NOTE:

1. Strap all signal cables to the side of the pole with 3/4" stainless steel straps when the distance between the spanwire attachment clamp and the weatherheads exceeds 3'-0".
2. Provide minimum two spanwire pole clamps per pole.
3. It is prohibited to attach two span wires at one pole clamp.
4. For general requirements refer to NCDOT Standard Specifications for Roadway and Structures, January 2018.



Attachment of Cable to Intermediate Metal Pole

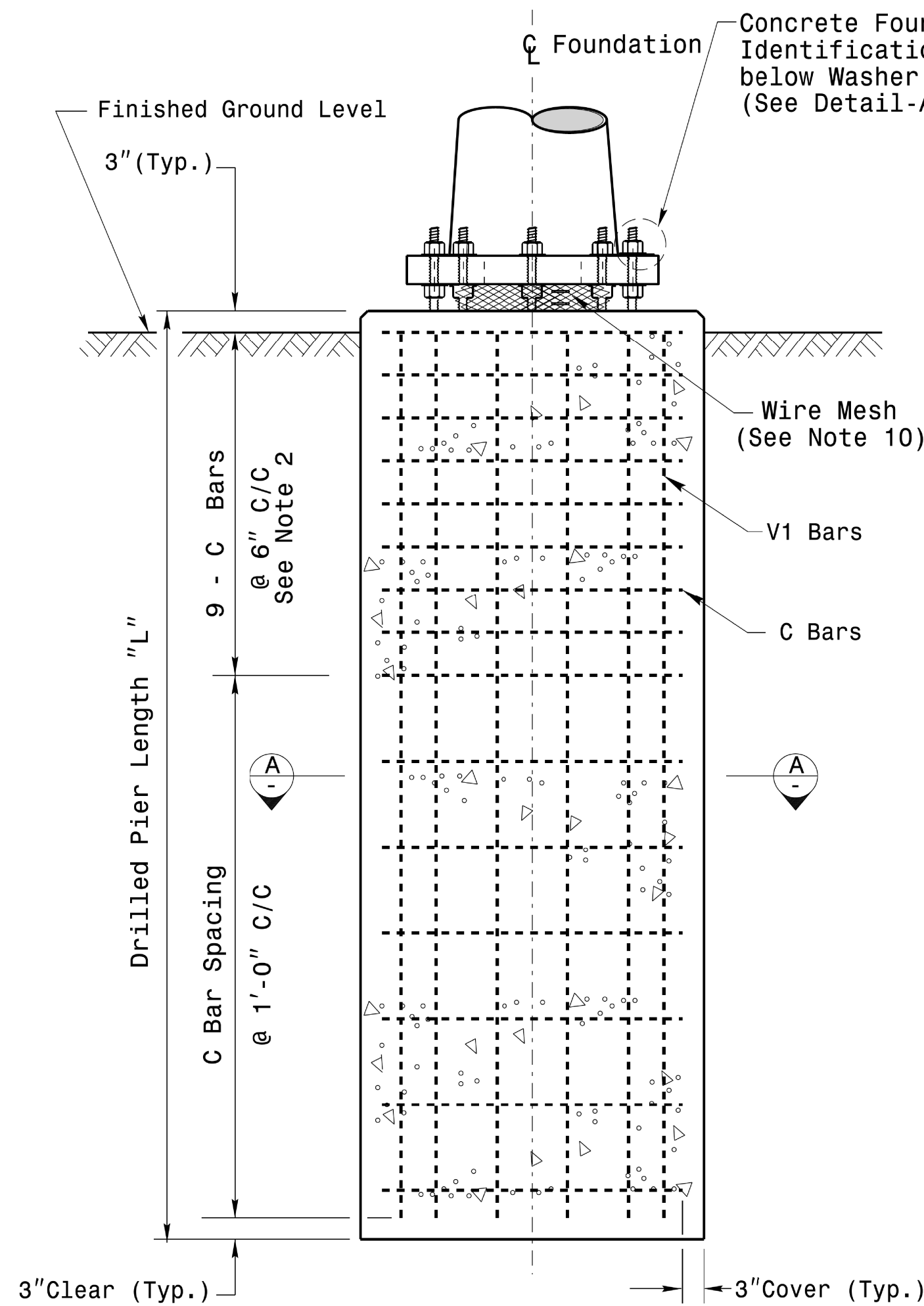


Metal Pole Grounding Detail For Strain Pole and Mast Arm

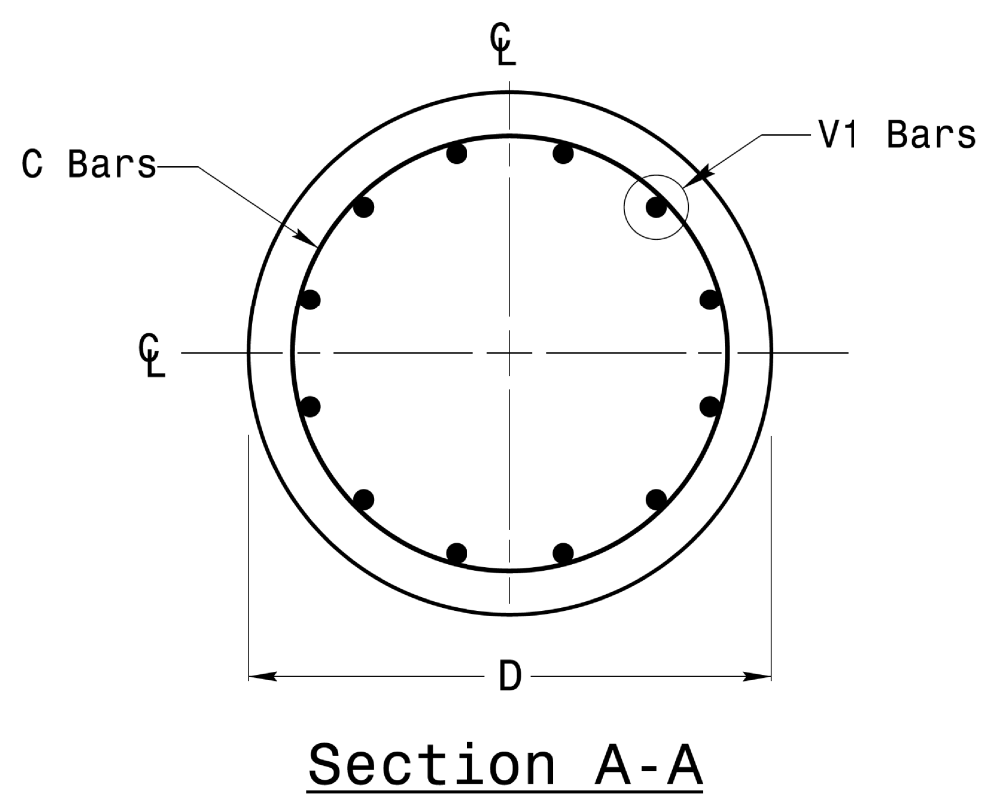
Fabrication Details - Strain Pole Attachments

11-001-2017_08:36 S:\IT&SUM\ITS_Signals&Signal_Design_Sect\on\Eastern_Region\MI_Sheets\2016\2014_Sig_M6_Sig_M6_Fabrication_Detail\Strain_Poles.dgn

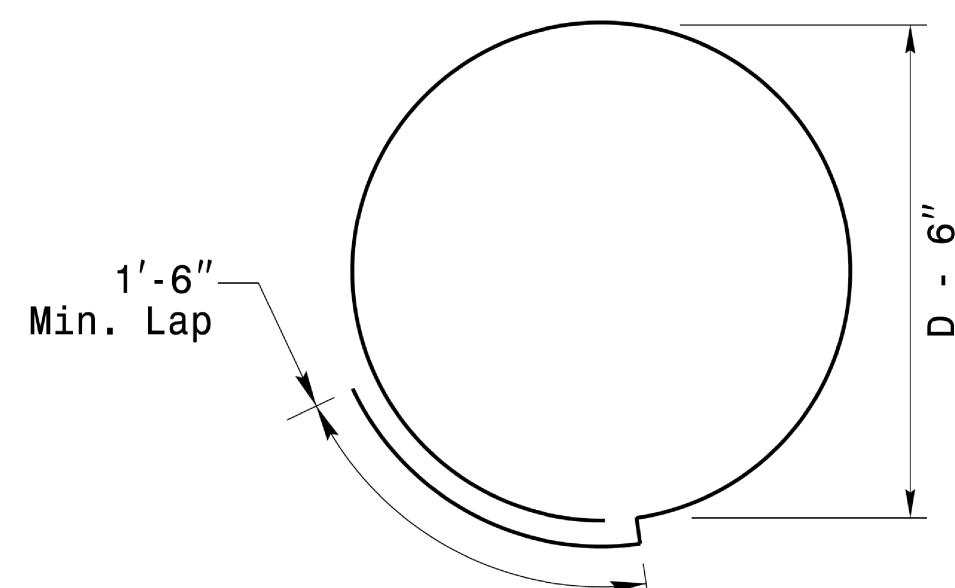
<p>750 N. Greenfield Pkwy, Garner, NC 27529</p>	<p>Typical Fabrication Details For Strain Pole Attachments</p>		<p>SEAL</p> <p>Debesh C. Sarkar</p>
	<p>PLAN DATE: OCTOBER 2017</p> <p>DESIGNED BY: C.F. ANDREWS</p> <p>PREPARED BY: N. BITTING</p> <p>REVIEWED BY: D.C. SARKAR</p>	<p>REVISIONS</p> <p>INIT. DATE</p>	



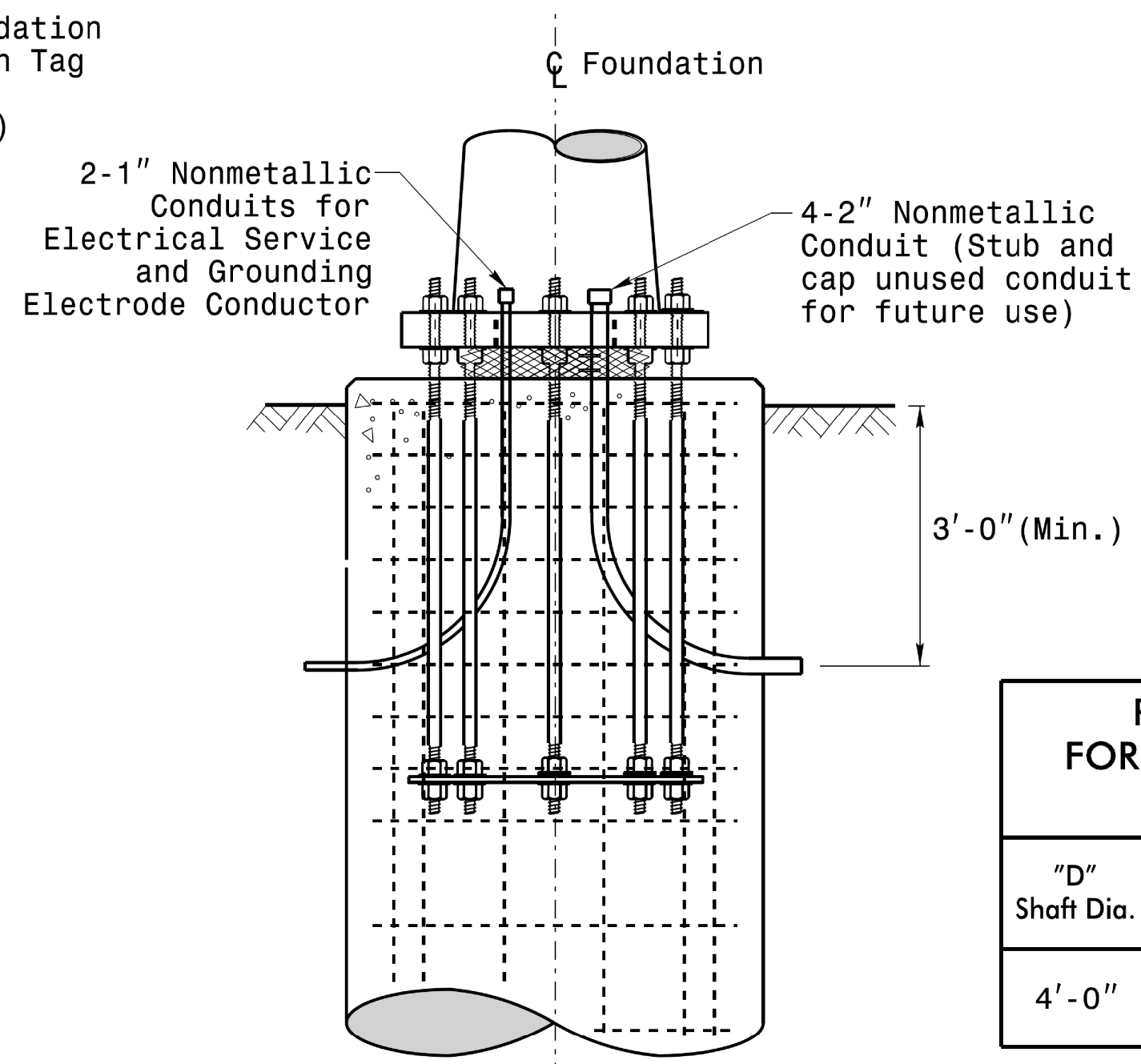
Concrete Shaft Elevation



Section A-A



Typical "C" Bar Detail



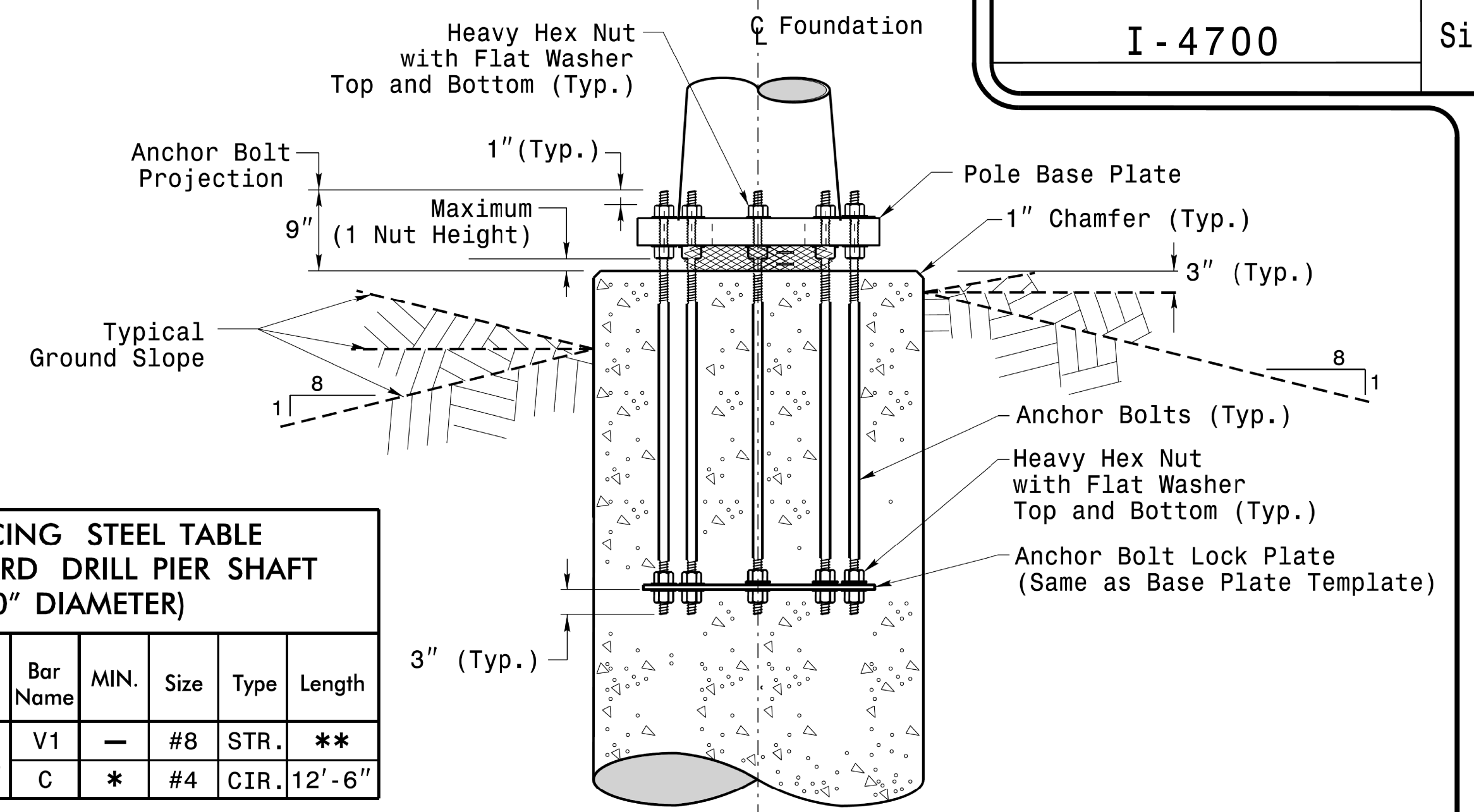
Typical Foundation Conduit Details

"D" Shaft Dia.	Conc. Volume (cu. yds.)	Bar Name	MIN.	Size	Type	Length
4'-0"	.465 x L	V1	-	#8	STR.	**
		C	*	#4	CIR.	12'-6"

* See Note No. 2
** See Note No. 3

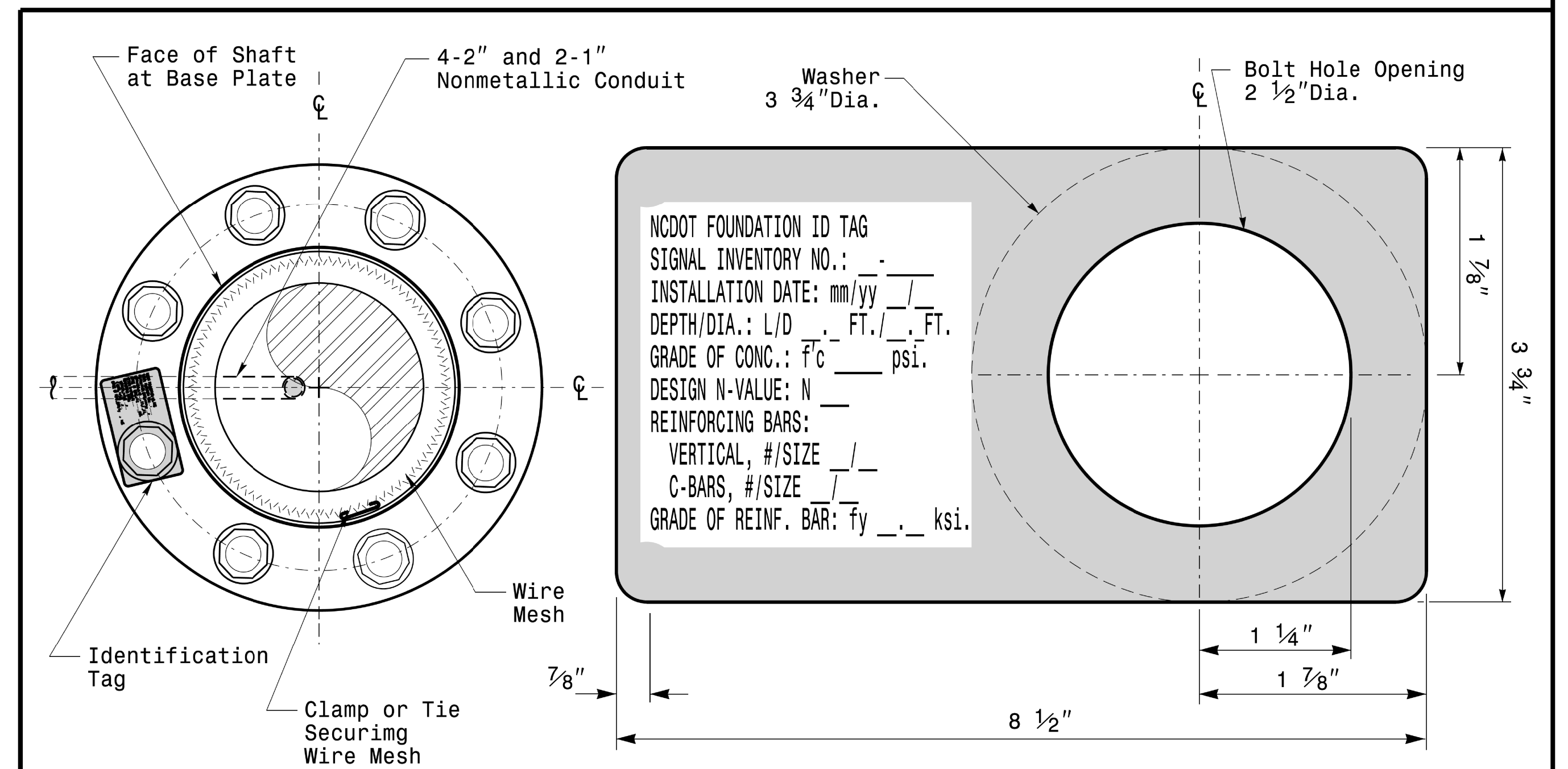
General Notes:

1. If actual subsurface conditions differ significantly from boring data contact the Engineer before excavating or placing concrete.
2. Circular tie reinforcing rings may be vertically adjusted by +/-3" at a depth between 2'-0" and 3'-0" to facilitate the installation of electrical conduit entering in the cage.
3. For standard foundations, see sheet Sig. M8 for details. Vertical reinforcing bars (V1) may be horizontally adjusted by +/-3" to facilitate the installation of electrical conduit entering into the cage.
4. Provide 2" to 5" foundation projection above ground level depending on the ground slope.
5. Unless otherwise shown, foundation designs are based on non-sloping level ground surfaces with slope ratios of 8:1 (H:V) or flatter. If actual ground line slopes are steeper contact the Engineer before excavating or placing concrete.
6. Construct foundations in accordance with NCDOT Standard Provisions SPO9 R005- Foundations and Anchor Rod Assemblies for Metal Poles. All applicable 2018 NCDOT Standard Specifications are referenced in this provision. Refer to the NCDOT Resources/Specifications page located on the Connect NCDOT website.
[https://connect.ncdot.gov/resources/Specifications and Special Provisions.aspx](https://connect.ncdot.gov/resources/Specifications%20and%20Special%20Provisions.aspx)
7. Use air entrained AA concrete mix with a compression strength of $f'c=4500$ psi. (min.) after 28 days.
8. Use ASTM A615 grade 60 deformed bars for all reinforcing steel. Maintain at least 3" cover on all reinforcement.
9. Locate the Identification Tag on the top of the base plate, directly above the conduit's entry point.
10. Provide two layers of galvanized welded 23 gauge (0.25) 6" wide 4 mesh wire around pipes under the base plate and secure it with ties if necessary.
11. Preferred location for the I.D. Tag is as shown in Detail-A; directly above the conduit entering the foundation.



Typical Foundation Anchor Bolt Details

(Reinforcing Cage Not Shown for Clarity)



Concrete Foundation Identification Tag Details

Detail-A

D = Diameter
L = Length/Depth
mm = Month
yy = Year

	<p>Construction Details For Foundations</p>			
	<p>PLANNED BY: OCTOBER 2018</p>	<p>DESIGNED BY: C.B. COGDILL</p>		<p>REVIEWED BY: D.C. SARKAR</p>
<p>750 N. Greenfield Pkwy, Garner, NC 27529</p>	<p>REV. NO. 1</p>	<p>COMMENTS: Revised Foundation Tag Details</p>	<p>INIT. N.B.</p>	<p>DATE: 5/11/2015</p>
<p>SCALE: 0 NA NONE</p>	<p>DocuSigned by: Dinesh C. Sarkar</p>		<p>10/11/2017</p>	

Construction Details - Foundations

11-001-2017_08:37 S:\IT&S\UM\IS\SIGNALS\SIGNAL Design Section\Eastern Region\MM_Sheets\2016\2014_Sig.M7_Std_Construction_Details-Strain_Poles.dgn

SOIL CONDITION

PROJECT ID. NO.	SHEET NO.
I - 4700	Sig.M8

		STANDARD STRAIN POLES						STANDARD FOUNDATIONS 48" Diameter Drilled Pier Length (L) - Feet							Reinforcement			
		Case No.	Pole Height (Ft.)	Base Plate BC (In.)	Reactions at the Pole Base			Clay				Sand			Longitudinal		Stirrups	
					Axial (kip)	Shear (kip)	Moment (ft-kip)	Medium N-Value 4-8	Stiff N-Value 9-15	Very Stiff N-Value 16-30	Hard N-Value >30	Loose N-Value 4-10	Medium N-Value 11-30	Dense N-Value >30	Bar Size (#)	Quantity (ea.)	Bar Size (#)	Spacing (in.)
WIND ZONE 1	LIGHT	S26L3	26	25	2	11	270	19	13	10	8	17	14.5	12.5	8	12	4	12
		S30L3	30	25	2	11	300	19.5	13.5	10	8	17.5	15	13	8	14	4	12
		S35L3	35	25	3	11	320	20	13.5	10.5	8	17.5	15	13	8	14	4	12
	HEAVY	S30H3	30	29	3	16	450	24.5	16	12	9	21	17.5	15	8	16	4	6
		S35H3	35	29	4	16	515	26	17	12.5	9.5	22	18.5	16	8	16	4	6
WIND ZONE 2	LIGHT	S26L2	26	23	2	10	245	18	12.5	9.5	8	16.5	14	12	8	12	4	12
		S30L2	30	23	2	10	270	18.5	12.5	10	8	16.5	14	12.5	8	12	4	12
		S35L2	35	23	3	10	300	19.5	13	10	8	17	14.5	13	8	12	4	12
	HEAVY	S30H2	30	29	3	15	415	23	15.5	11.5	9	20	17	14.5	8	16	4	6
		S35H2	35	29	4	15	475	25	16.5	12	9.5	21	17.5	15.5	8	16	4	6
WIND ZONE 3	LIGHT	S26L2	26	23	2	10	245	18	12.5	9.5	8	16.5	14	12	8	12	4	12
		S30L2	30	23	2	10	270	18.5	12.5	10	8	16.5	14	12.5	8	12	4	12
		S35L2	35	23	3	10	300	19.5	13	10	8	17	14.5	13	8	12	4	12
	HEAVY	S30H2	30	29	3	15	415	23	15.5	11.5	9	20	17	14.5	8	16	4	6
		S35H2	35	29	4	15	475	25	16.5	12	9.5	21	17.5	15.5	8	16	4	6
WIND ZONE 4	LIGHT	S26L1	26	22	2	8	190	16	11.5	8.5	8	15	12.5	11	8	12	4	12
		S30L1	30	22	2	8	205	16.5	11.5	9	8	15	13	11.5	8	12	4	12
		S35L1	35	22	3	8	230	17	12	9	8	15.5	13.5	11.5	8	12	4	12
	HEAVY	S30H1	30	25	3	12	320	20.5	13.5	10.5	8	18	15	13.5	8	16	4	6
		S35H1	35	25	4	12	350	21	14	10.5	8.5	18.5	15.5	13.5	8	16	4	6
WIND ZONE 5	LIGHT	S26L2	26	23	2	10	245	18	12.5	9.5	8	16.5	14	12	8	12	4	12
		S30L2	30	23	2	10	270	18.5	12.5	10	8	16.5	14	12.5	8	12	4	12
		S35L2	35	23	3	10	300	19.5	13	10	8	17	14.5	13	8	12	4	12
	HEAVY	S30H2	30	29	3	15	415	23	15.5	11.5	9	20	17	14.5	8	16	4	6
		S35H2	35	29	4	15	475	25	16.5	12	9.5	21	17.5	15.5	8	16	4	6


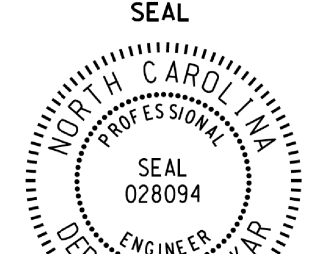
General Notes:

1. Values shown in the "Reactions at the Pole Base" column represent the minimum acceptable capacity allowed for design using a design CSR of 1.00.
2. Use chairs and spacers to maintain proper clearance.
3. For foundation, always use air-entrain concrete mix.

Foundation Selection:

1. Perform a standard penetration test at each proposed foundation site to determine "N" value.
2. Select the appropriate wind zone from M 1 drawing.
3. Select the soil type (Clay or Sand) that best describes the soil characteristics.
4. Get the appropriate standard pole case number from the plans or from the Engineer.
5. Select the appropriate column under "Standard Foundations" based on soil type and "N" value. Select the appropriate row based on the pole load case.
6. The foundation depth is the value shown in the "Standard Foundations" category where the column and the row intersect.
7. Use Construction Procedures and Design Methods prescribed by FHWA-NHI-10-016 for Reference Drilled Shafts.

48" Dia. Foundations Concrete Volume (cubic yards) = (0.465) x Drilled Pier Length

	<p>Standard Strain Pole Foundation for All Soil Conditions</p> <table style="width: 100%; font-size: small;"> <tr> <td>PLAN DATE: OCTOBER 2017</td> <td>DESIGNED BY: C.B. COGDILL</td> </tr> <tr> <td>PREPARED BY: N. BITTING</td> <td>REVIEWED BY: D.C. SARKAR</td> </tr> <tr> <td>REVISIONS</td> <td>INIT. DATE</td> </tr> <tr> <td>Changed "Foundation Depth" to "Drilled Pier Length" in Spec. Exp.</td> <td>N.B. 7/12/2015</td> </tr> </table>	PLAN DATE: OCTOBER 2017	DESIGNED BY: C.B. COGDILL	PREPARED BY: N. BITTING	REVIEWED BY: D.C. SARKAR	REVISIONS	INIT. DATE	Changed "Foundation Depth" to "Drilled Pier Length" in Spec. Exp.	N.B. 7/12/2015	
PLAN DATE: OCTOBER 2017	DESIGNED BY: C.B. COGDILL									
PREPARED BY: N. BITTING	REVIEWED BY: D.C. SARKAR									
REVISIONS	INIT. DATE									
Changed "Foundation Depth" to "Drilled Pier Length" in Spec. Exp.	N.B. 7/12/2015									
<p>SCALE: NA</p> <p>NONE</p>	<p>10/11/2017</p> <p>DATE</p>									

Standard Strain Pole Foundation-All Soil Condition