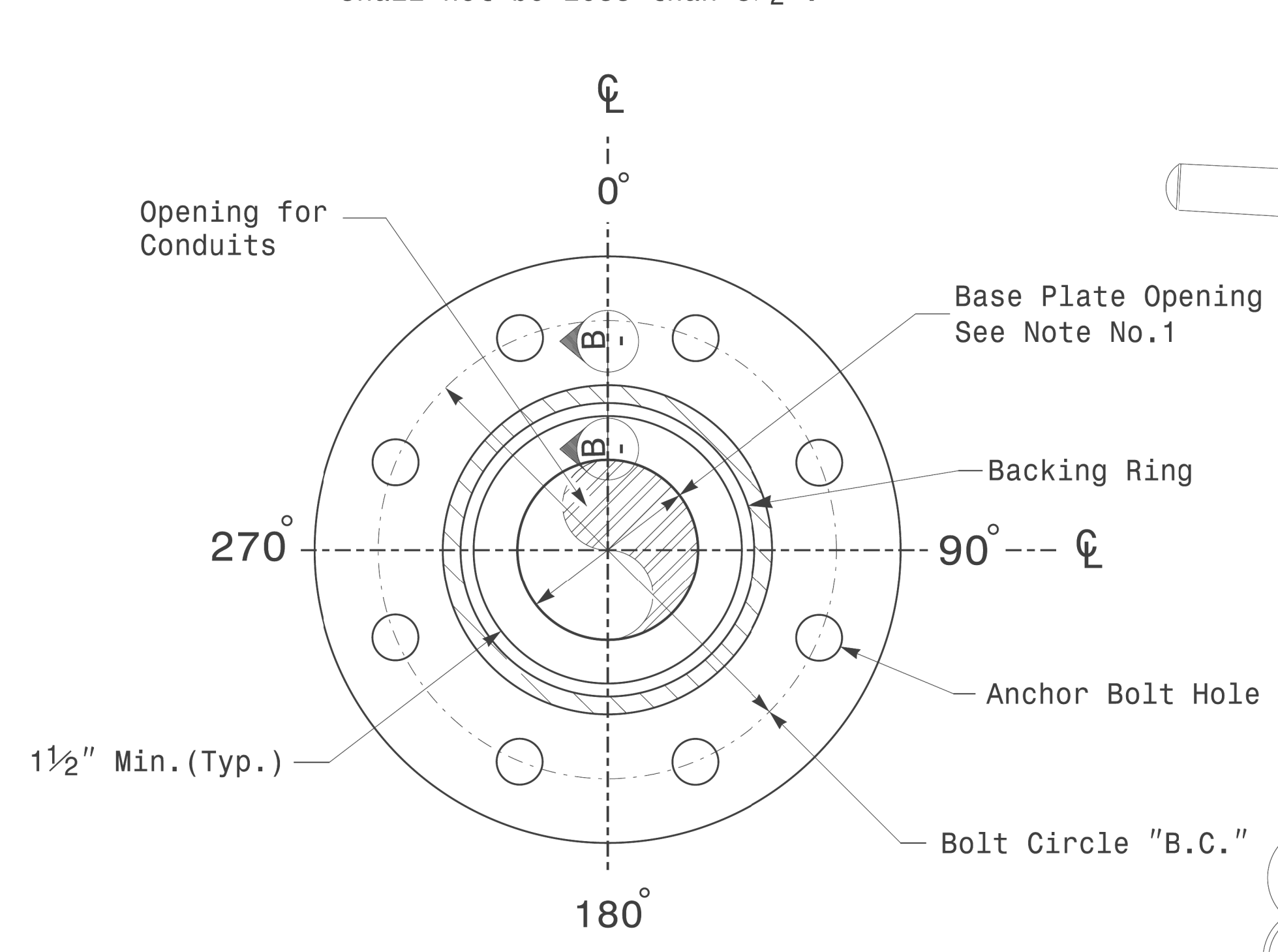
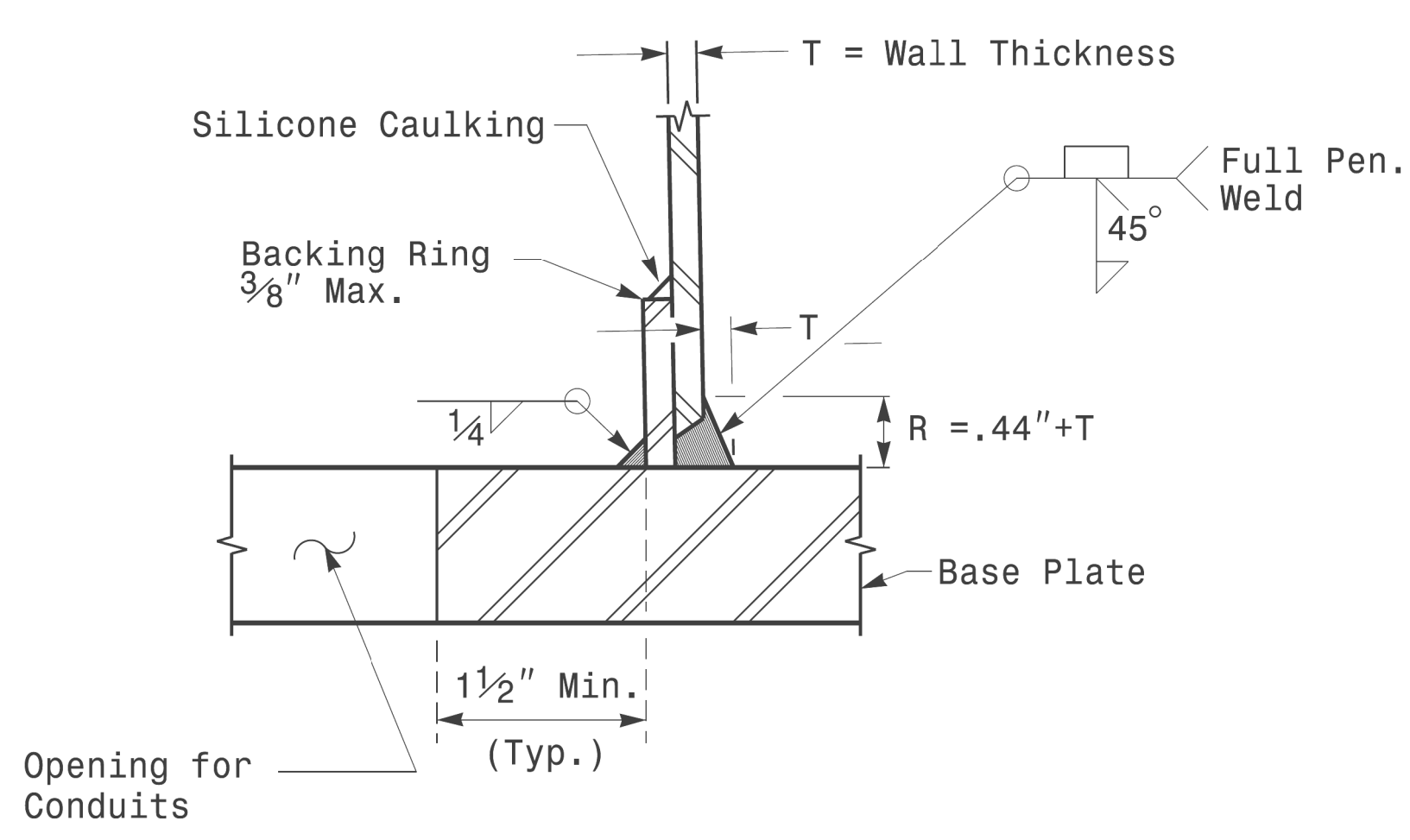


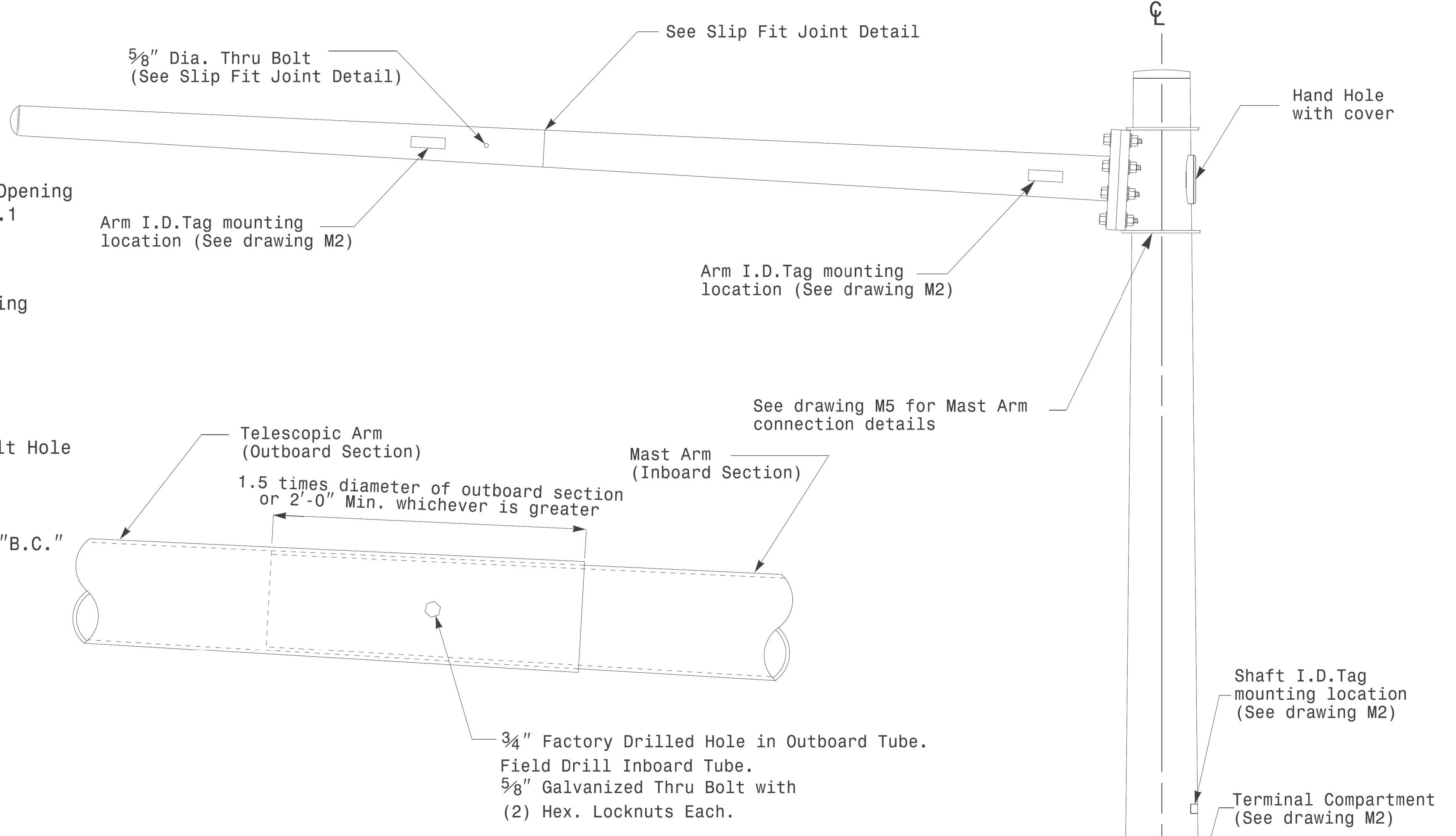
Note:
 1. Opening in pole base plate shall be equal to pole base inside diameter minus 3 1/2" but shall not be less than 8 1/2".



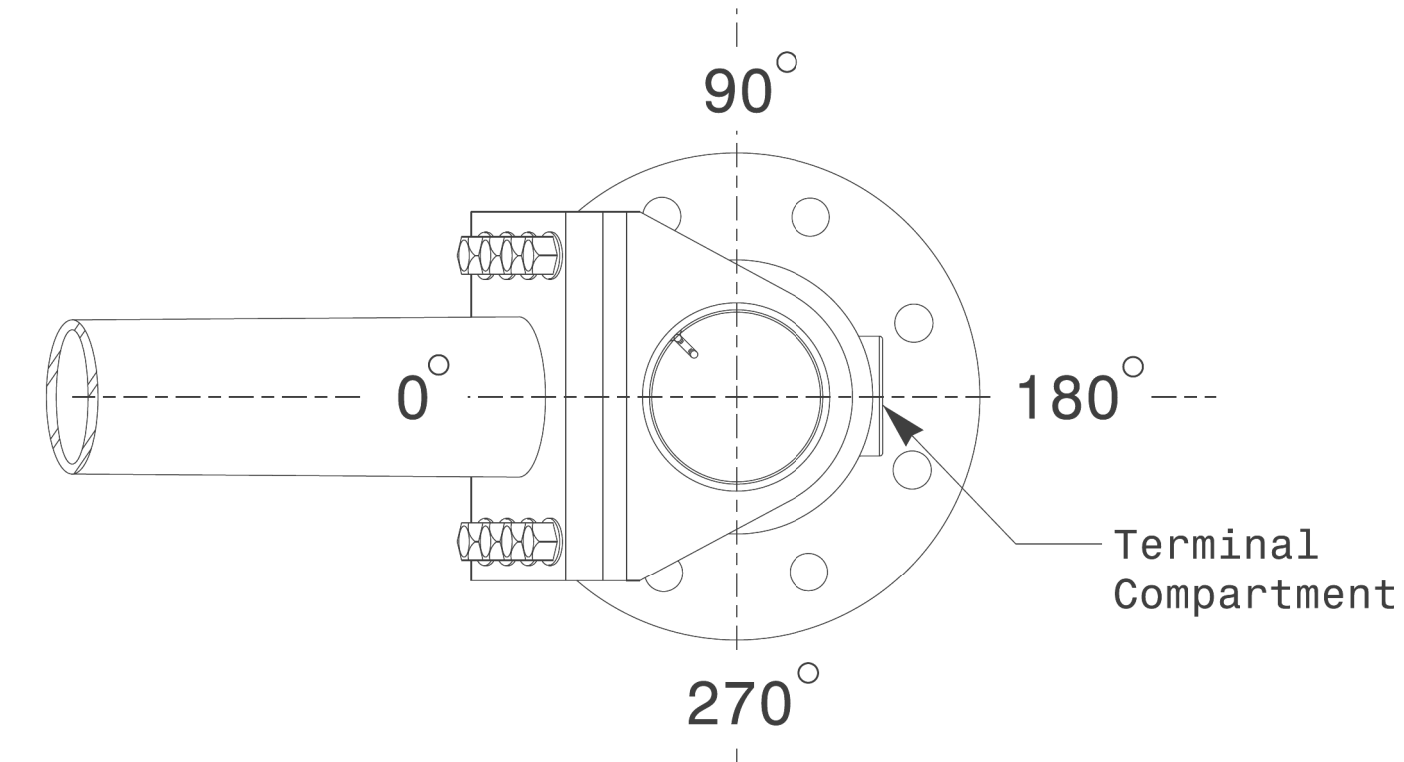
Section A-A
Pole Base Plate Details



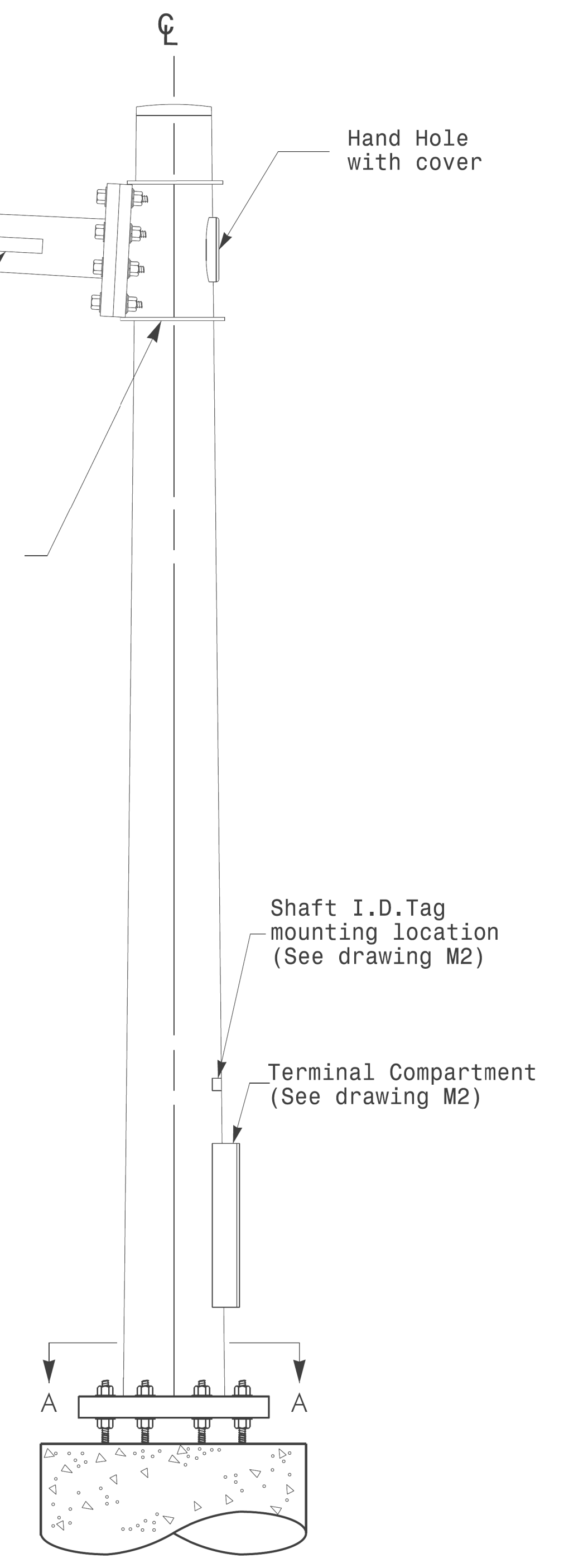
Section B-B
 (Pole Attachment to Base Plate)
Full-Penetration Groove Weld Detail



Slip Fit Joint Detail for Mast Arm



Mast Arm Radial Orientation



Mast Arm Pole

Fabrication Details - Mast Arm Poles

	Typical Fabrication Details For Mast Arm Poles		SEAL
	PLAN DATE: OCTOBER 2017 DESIGNED BY: K.C. DURIGON PREPARED BY: N. BITTING REVIEWED BY: D.C. SARKAR	REVISIONS INIT. DATE	
SCALE: 0 NA NONE	DocuSigned by: Dinesh C. Sarkar 442637894		10/11/2017 DATE

11-OCT-2017 08:33
 S:\13565\115 Signal\sig1 Design Section\FacTerm Region\Sheet\2016\2014 Sig.M4 Std. Fabrication Detail\Mast Arm Poles.dgn
 User: dcsarkar