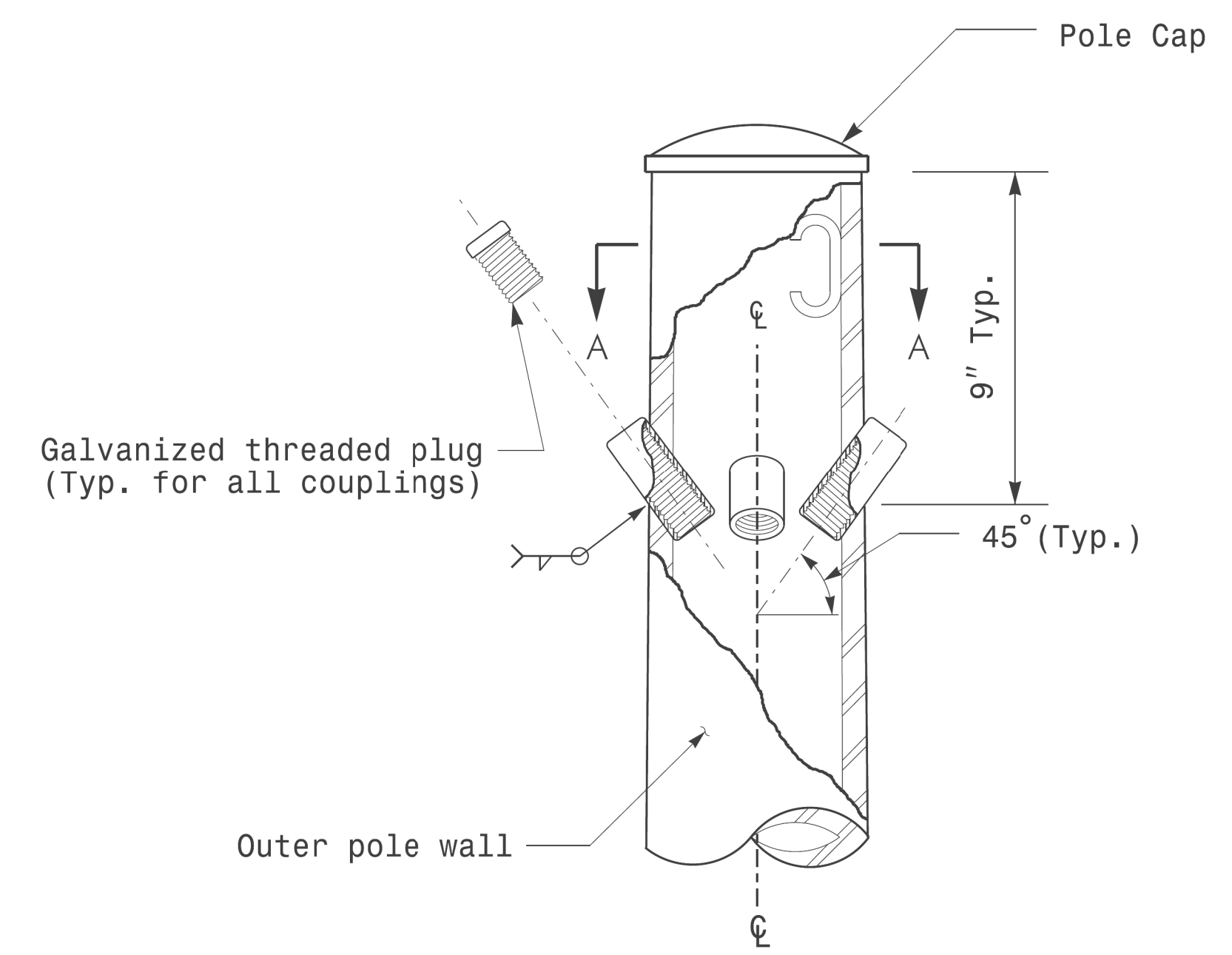
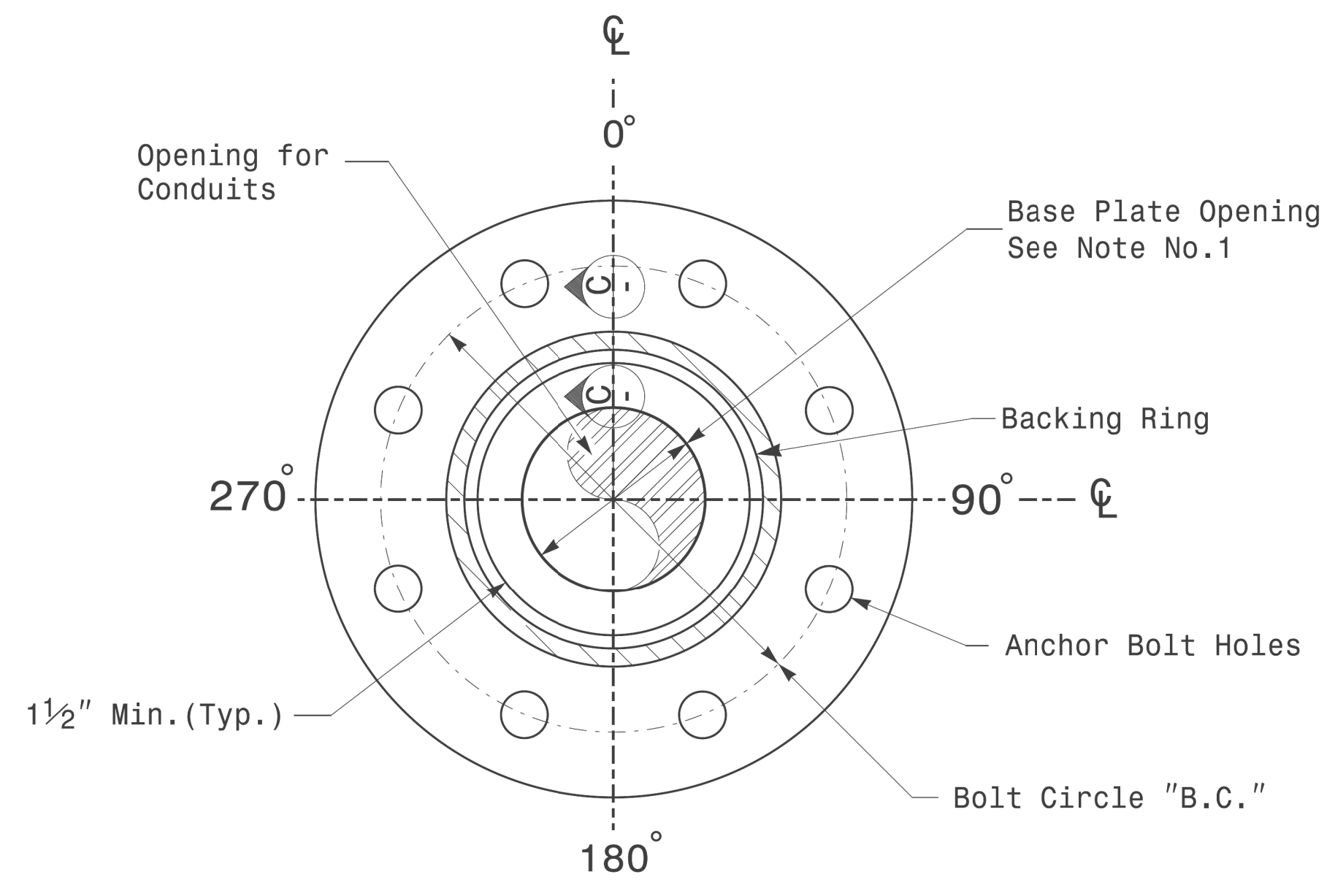


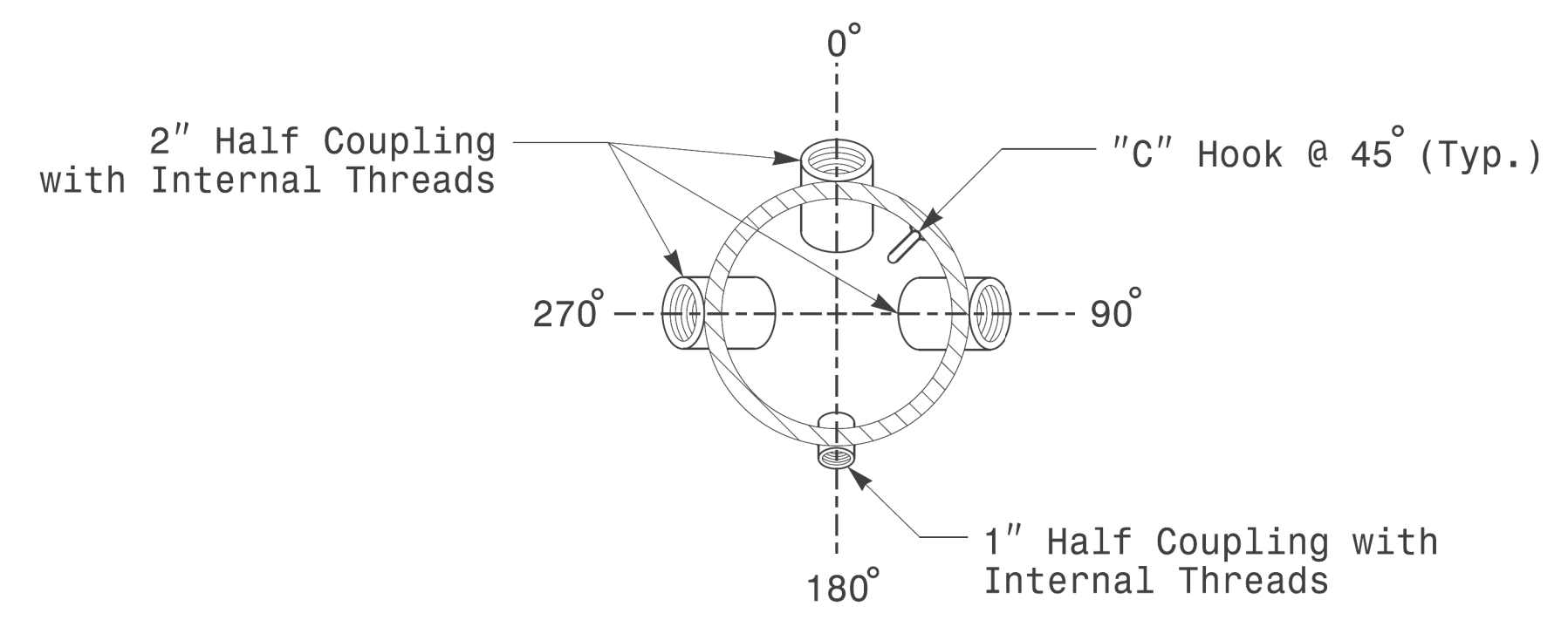
Note:  
 1. Opening in pole base plate shall be equal to pole base inside diameter minus 3 1/2" but shall not be less than 8 1/2".



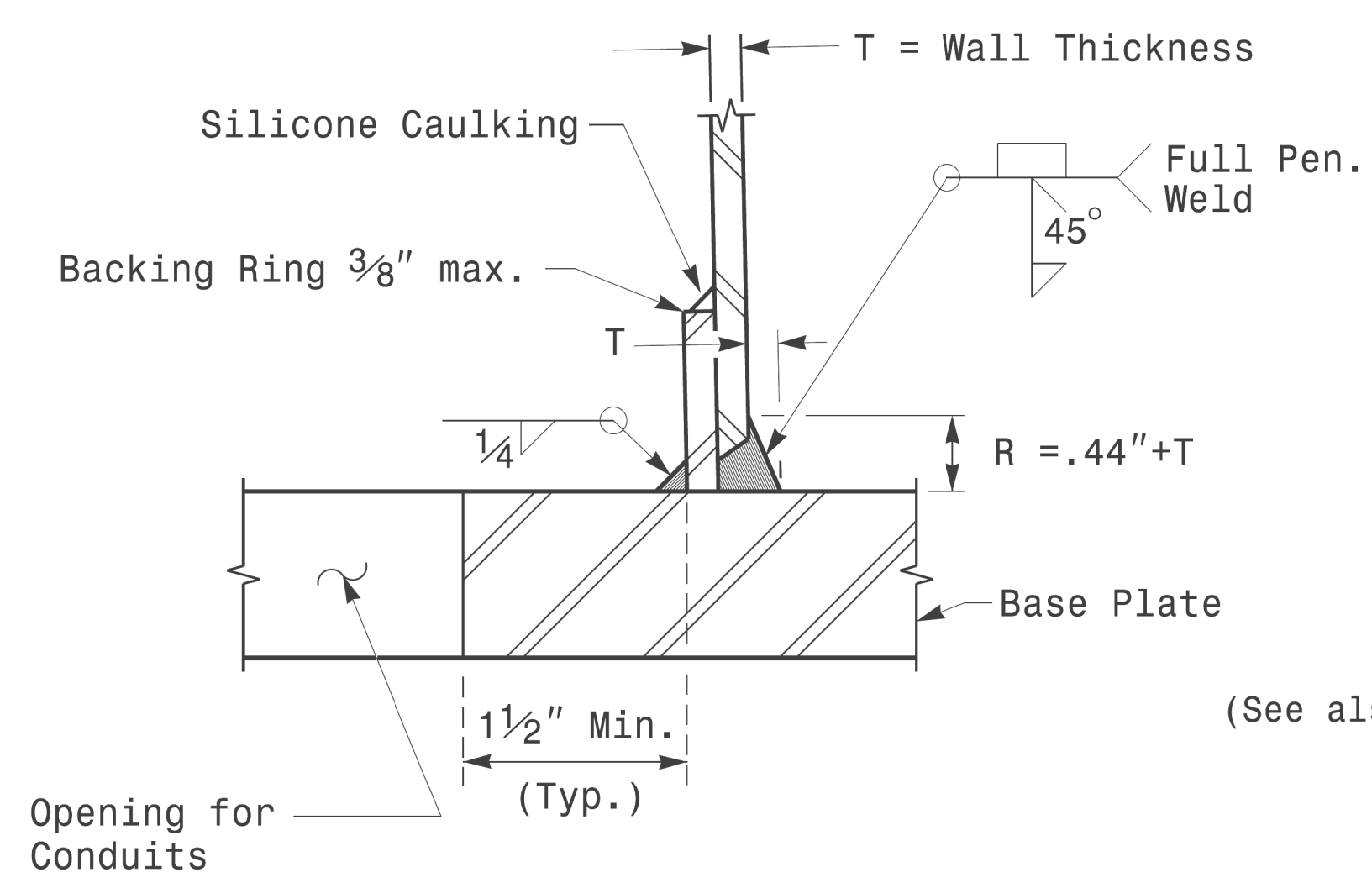
Cable Entrances at Top of Pole



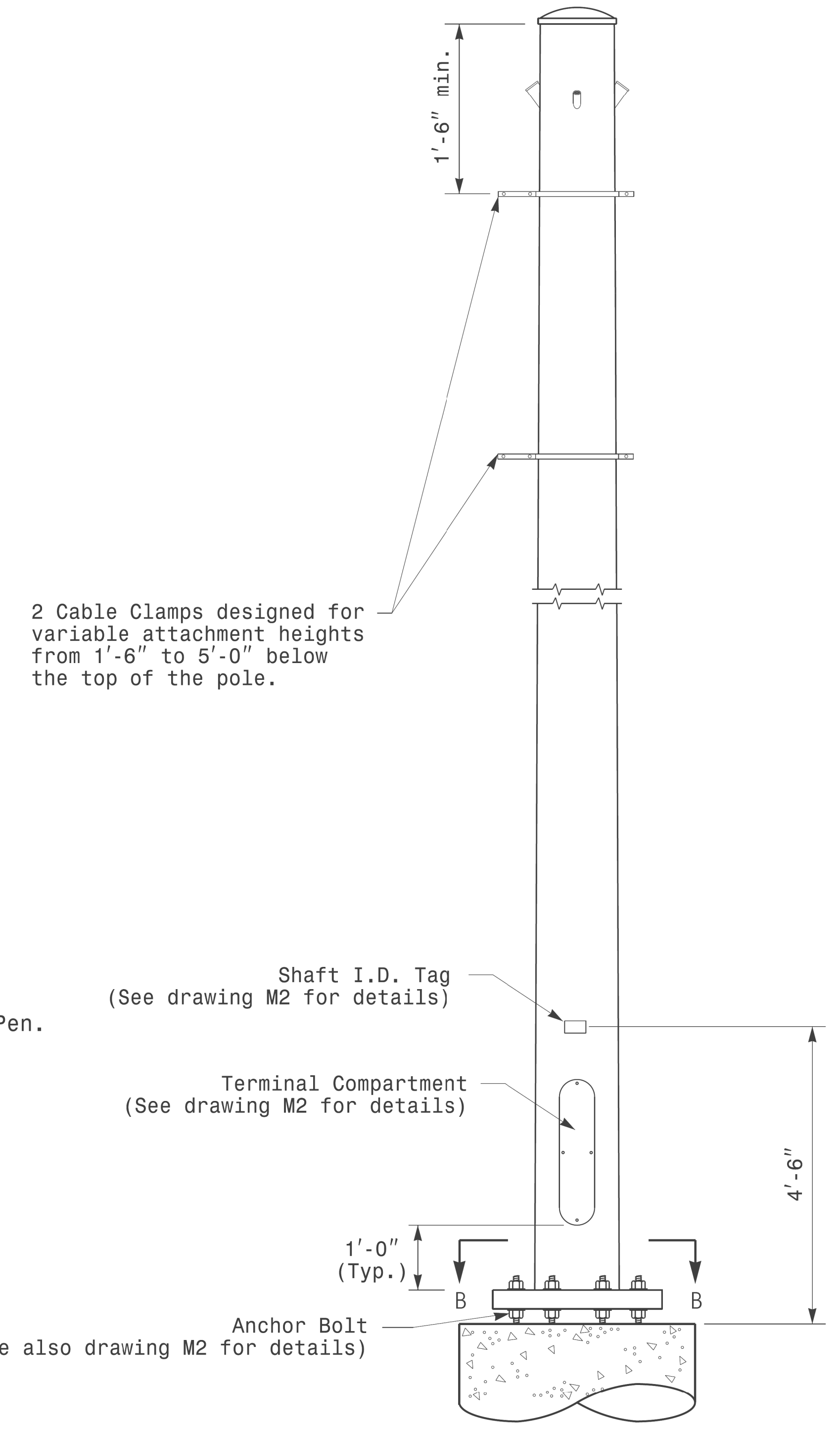
Section B-B  
Pole Base Plate Details  
(8 and 12 Bolt Pattern)



Section A-A  
Radial Orientation for Factory Installed  
Accessories at Top of Pole



Section C-C  
(Pole Attachment to Base Plate)  
Full-Penetration  
Groove Weld Detail



Monotube Strain Pole

	Typical Fabrication Details For Strain Poles		SEAL 
	PLAN DATE: OCTOBER 2017	DESIGNED BY: K.C. DURIGON	
	PREPARED BY: N. BITTING	REVIEWED BY: D.C. SARKAR	
SCALE: NONE	REVISIONS	INIT.	DATE

11-001-2017-08:25  
 S:\13630\115\Sig\1545\gn1 Design Section\Eastern Region\Sheet\2016\2014 Sig.M3 Std. Fabrication Detail-Strain Poles.dgn  
 User: dcar

**Fabrication Details – Strain Poles**