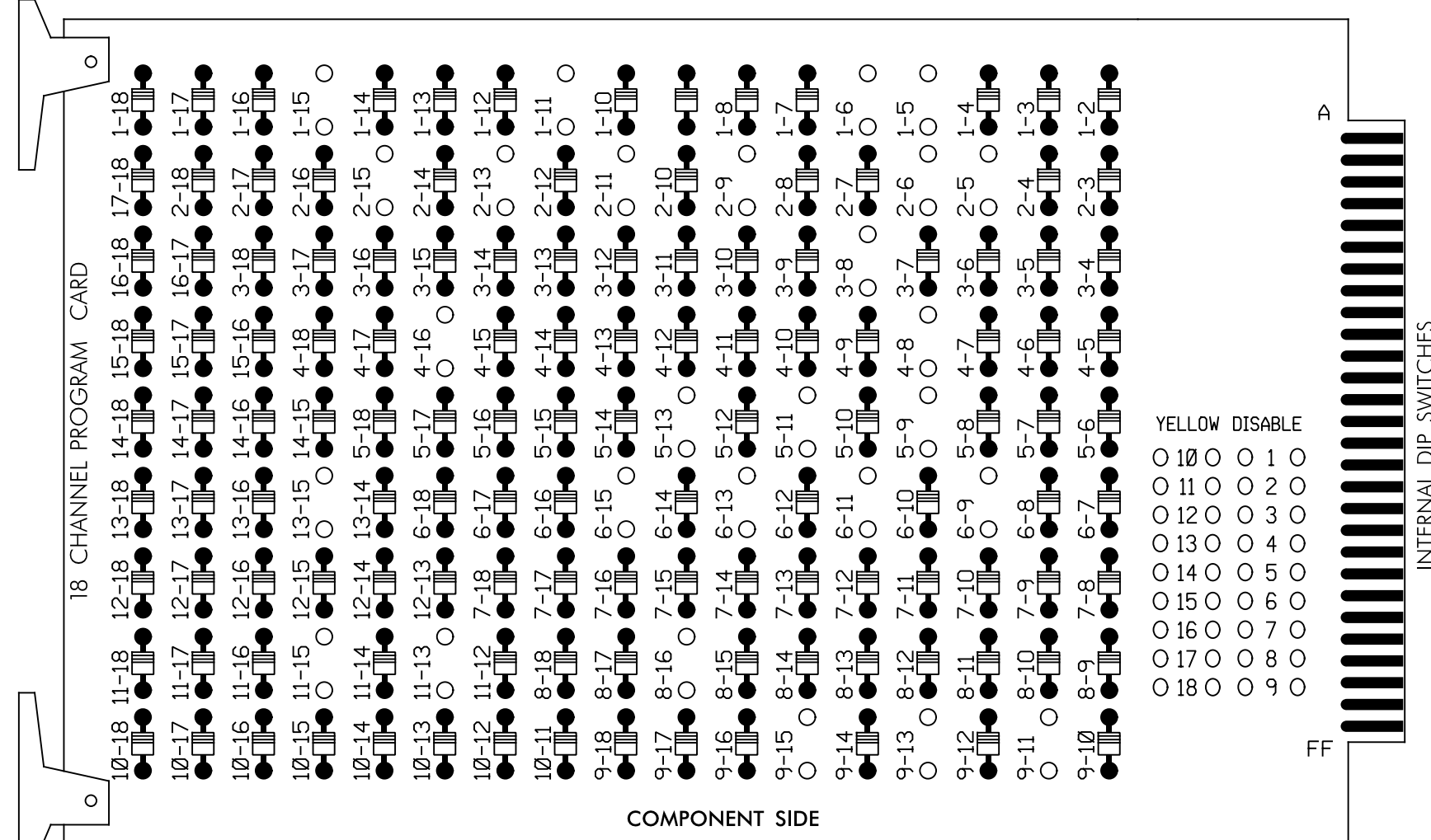


EDI MODEL 2018ECL-NC CONFLICT MONITOR PROGRAMMING DETAIL

(remove jumpers and set switches as shown)

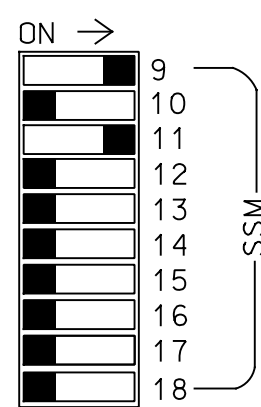
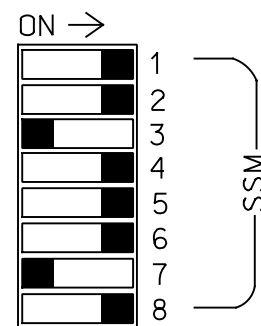
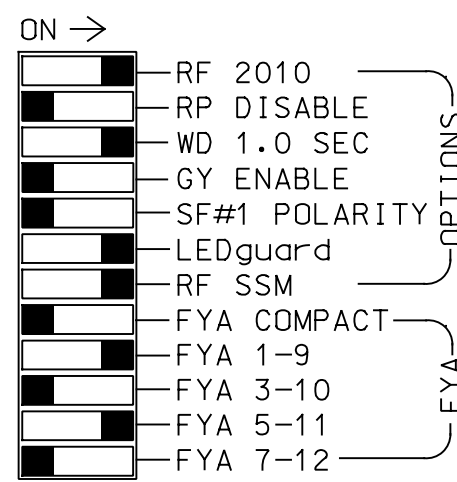
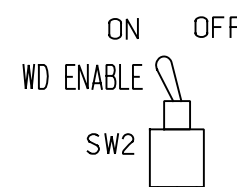
REMOVE DIODE JUMPERS 1-5, 1-6, 1-9, 1-11, 1-15, 2-5, 2-6, 2-9, 2-11, 2-13, 2-15, 3-8, 4-8, 4-16, 5-9, 5-11, 5-13, 6-9, 6-11, 6-13, 6-15, 8-16, 9-11, 9-13, 9-15, 11-13, 11-15, and 13-15.



REMOVE JUMPERS AS SHOWN

NOTES:

- 1. Card is provided with all diode jumpers in place. Removal of any jumper allows its channels to run concurrently.
2. Ensure jumpers SEL2-SEL5 and SEL9 are present on the monitor board.
3. Ensure that Red Enable is active at all times during normal operation.
4. Connect serial cable from conflict monitor to comm. part 1 of 2070 controller. Ensure conflict monitor communicates with 2070.



■ = DENOTES POSITION OF SWITCH

NOTES

- 1. To prevent "flash-conflict" problems, insert red flash program blocks for all unused vehicle load switches in the output file. The installer shall verify that signal heads flash in accordance with the Signal Plans.
2. Program phases 4 and 8 for Dual Entry.
3. Enable Simultaneous Gap-Out for all Phases.
4. Program phases 2 and 6 for Variable Initial and Gap Reduction.
5. Program phases 2 and 6 for Startup In Green.
6. Program phases 2, 6, and 8 for Startup Ped Call.
7. Program phases 2 and 6 for Yellow Flash, and overlaps 1 and 2 as Wag Overlaps.

EQUIPMENT INFORMATION

CONTROLLER.....2070L
CABINET332 W/ AUX FILE
SOFTWAREECONOLITE OASIS
CABINET MOUNT.....BASE
OUTPUT FILE POSITIONS..18 WITH AUX. OUTPUT FILE
LOAD SWITCHES USED.....S1,S2,S3,S4*,S5,S7,S8,S9, S11,S12,AUX S1,AUX S4
PHASES USED.....1,2,3*,4,5,6,8,2PED,6PED,8PED
OVERLAP A.....1+2
OVERLAP B.....NOT USED
OVERLAP C.....5+6
OVERLAP D.....NOT USED
* Used during preemption only.

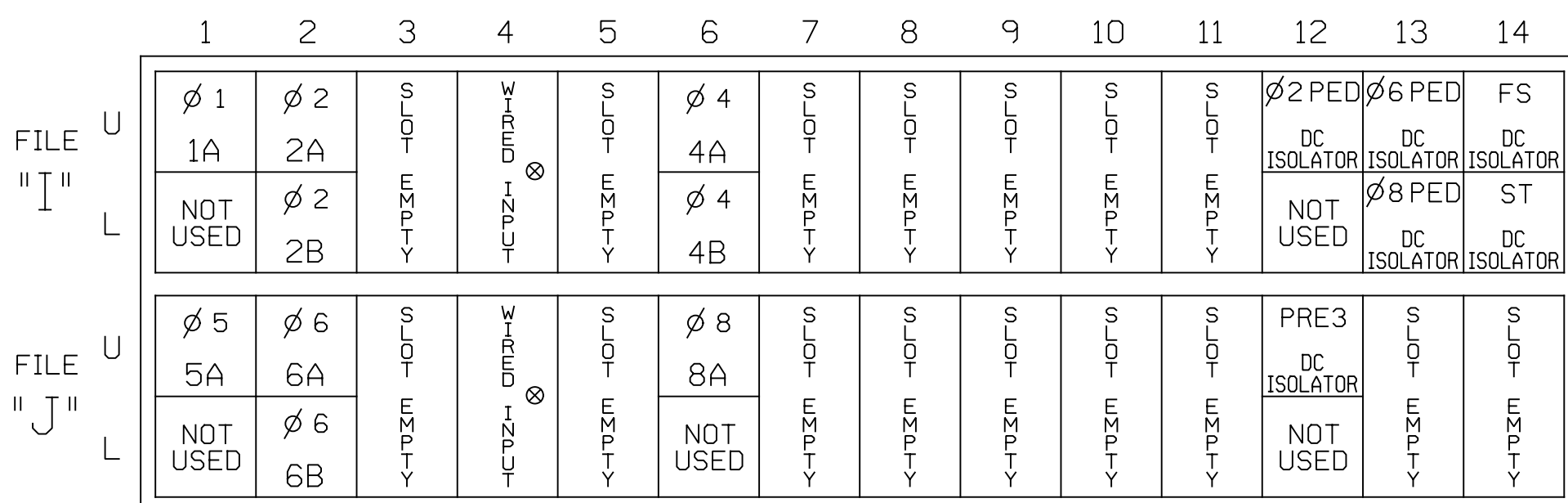
SIGNAL HEAD HOOK-UP CHART

Table with columns for LOAD SWITCH NO., S1-S12, AUX S1-S6, and PHASE. Rows include CMU CHANNEL NO., PHASE, SIGNAL HEAD NO., RED, YELLOW, GREEN, RED ARROW, YELLOW ARROW, FLASHING YELLOW ARROW, GREEN ARROW, PED YELLOW, and Pedestrian symbols.

NU = Not Used
* Denotes install load resistor. See load resistor installation detail this sheet.
★ See pictorial of head wiring in detail this sheet.
** Load Switch S3-Y drives a relay that generates a preempt confirmation signal from the cabinet to the fire station during preemption. See sheet 3 for details.
Head active only during preemption

INPUT FILE POSITION LAYOUT

(front view)



EX.: 1A, 2A, ETC. = LOOP NO.'S

FS = FLASH SENSE
ST = STOP TIME
PRE = PREEMPT

⊗ Wired Input - Do not populate slot with detector card

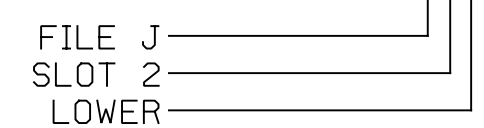
INPUT FILE CONNECTION & PROGRAMMING CHART

Table with columns: LOOP NO., LOOP TERMINAL, INPUT FILE POS., PIN NO., INPUT ASSIGNMENT NO., DETECTOR NO., NEMA PHASE, CALL, EXTEND, FULL TIME DELAY, STRETCH TIME, DELAY TIME. Includes rows for 1A, 2A, 4A, 4B, 5A, 6A, 6B, 8A, PED PUSH BUTTONS, P21,P22, P61,P62, P81,P82.

NOTE:
INSTALL DC ISOLATORS IN INPUT FILE SLOTS 112 AND 113.

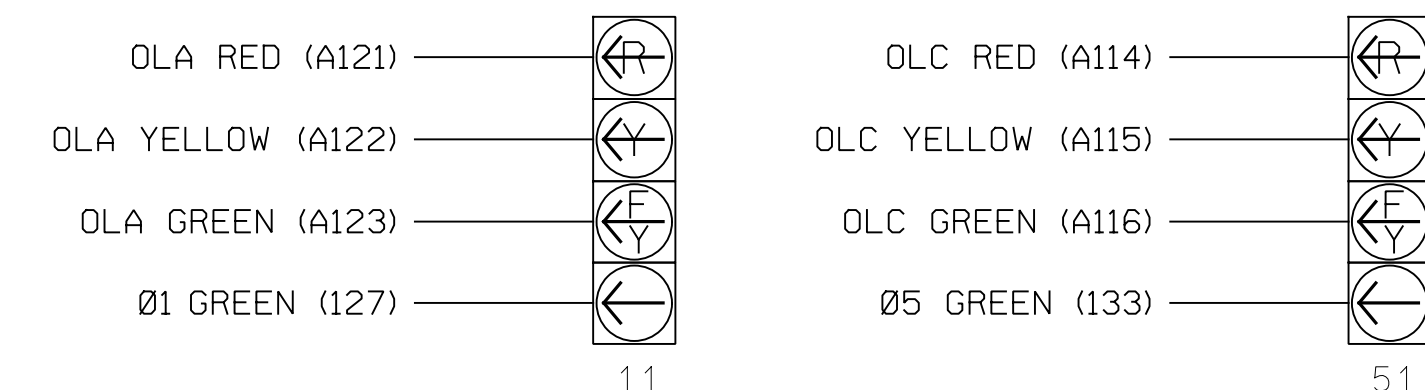
1 Add jumper from I1-W to J4-W, on rear of input file.
2 Add jumper from J1-W to I4-W, on rear of input file.

INPUT FILE POSITION LEGEND: J2L



FYA SIGNAL WIRING DETAIL

(wire signal heads as shown)



NOTE

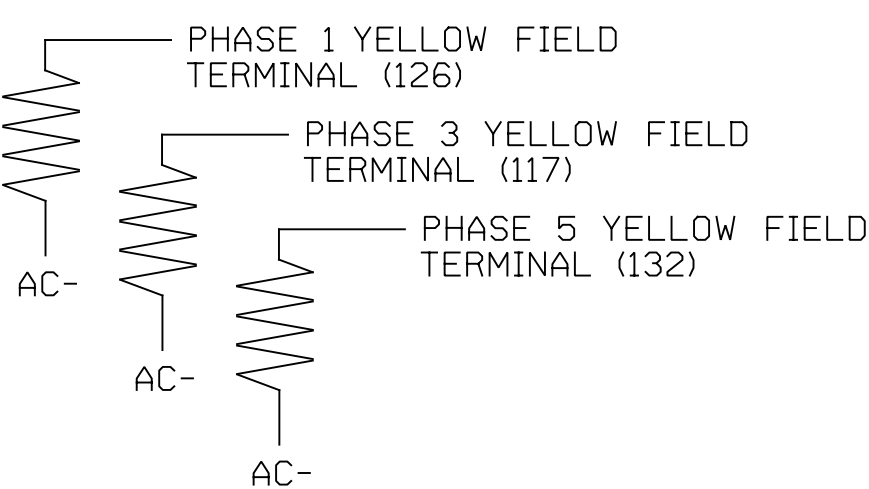
1. The sequence display for signal heads 11 and 51 requires special logic programming. See sheet 2 for programming instructions.

COUNTDOWN PEDESTRIAN SIGNAL OPERATION

Countdown Ped Signals are required to display timing only during Ped Clearance Interval. Consult Ped Signal Module user's manual for instructions on selecting this feature.

LOAD RESISTOR INSTALLATION DETAIL

Table with columns: VALUE (ohms), WATTAGE. Values: 1.5K - 1.9K, 25W (min); 2.0K - 3.0K, 10W (min).



THIS ELECTRICAL DETAIL IS FOR THE SIGNAL DESIGN: 14-1303
DESIGNED: January 2019
SEALED: 02/28/2019
REVISED: N/A

Electrical Details - Sheet 1 of 3 - Signal Modification

DOCUMENT NOT CONSIDERED FINAL UNLESS ALL SIGNATURES COMPLETED

Michael Baker INTERNATIONAL
8000 Regency Parkway, Suite 600
Cary, North Carolina 27518
Phone: 919-463-5488
NC License No: F-1084
MBAKERINTL.COM

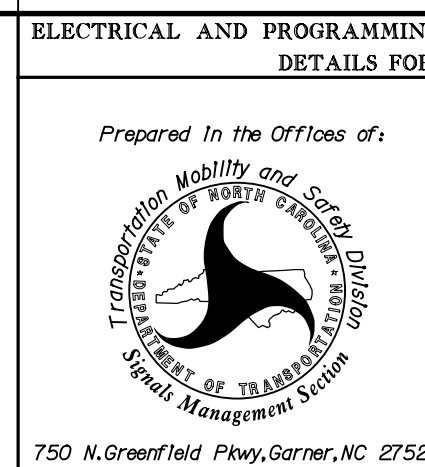


Table with columns: REVISIONS, INIT., DATE. Includes project details like US 19/64/74/129, Marks Drive/Old Ranger Road Connector, and dates/signatures.

SEAL
KELLY M. CORY
PROFESSIONAL ENGINEER
STATE OF NORTH CAROLINA
LICENSE NO. 038970

DocuSigned by: Kelly M Cory
2/28/2019
SIG. INVENTORY NO. 14-1303