

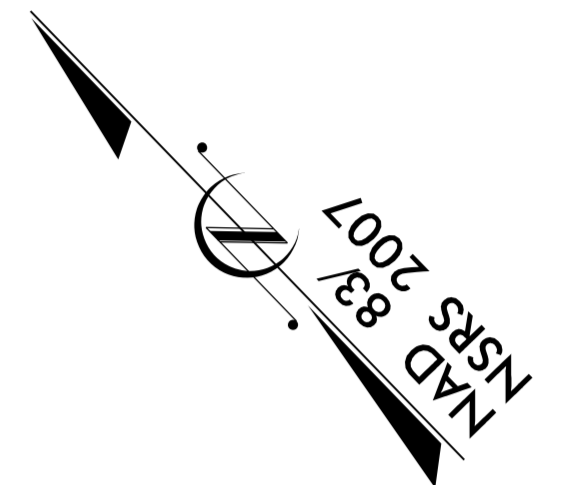
**This electronic collection of documents is provided  
for the convenience of the user  
and is Not a Certified Document –**

**The documents contained herein were originally issued  
and sealed by the individuals whose names and license  
numbers appear on each page, on the dates appearing  
with their signature on that page.**

**This file or an individual page  
shall not be considered a certified document.**

|            |           |
|------------|-----------|
| T.I.P. NO. | SHEET NO. |
| B-4962     | UO-1      |

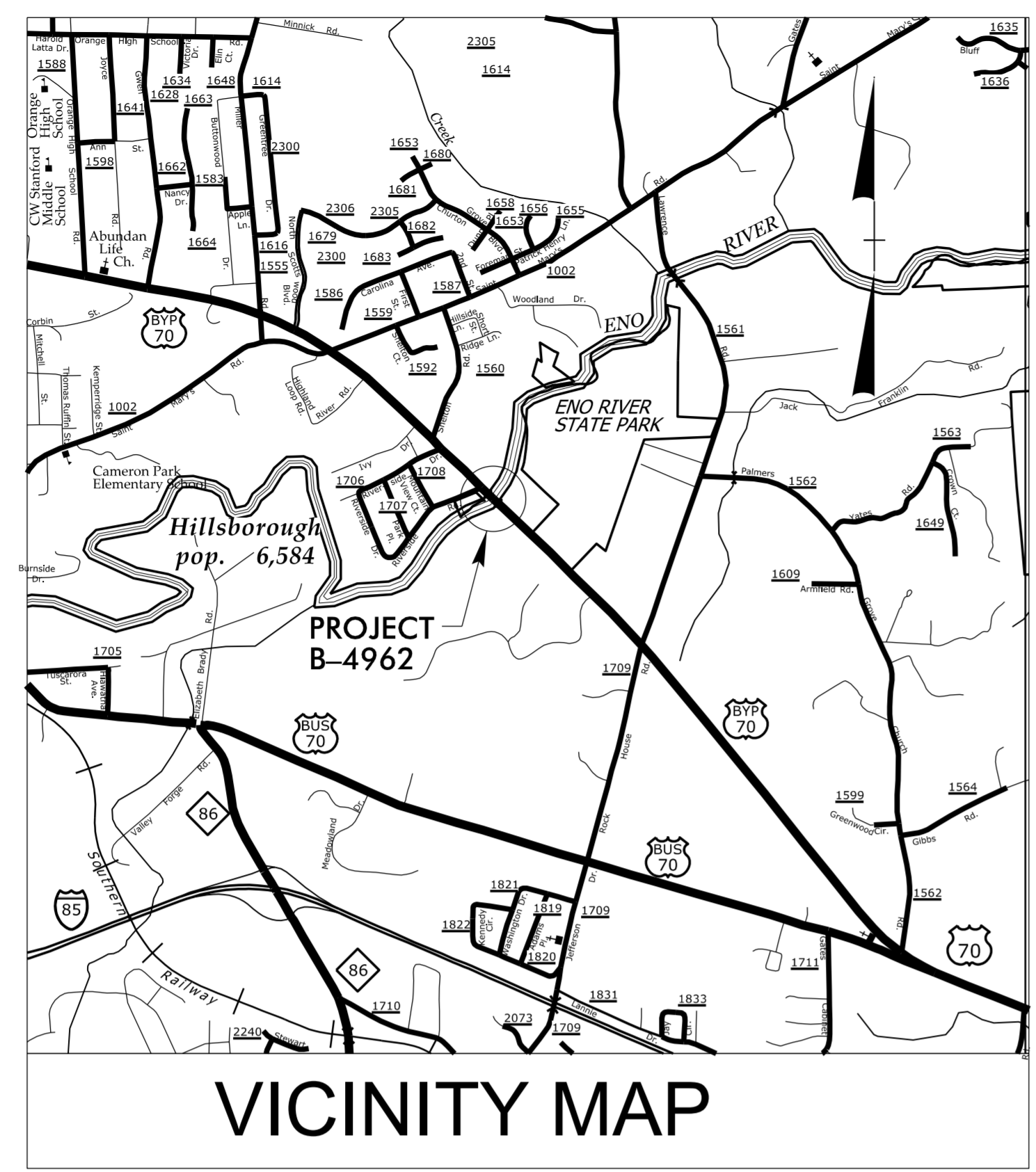
NOTE:  
 ALL UTILITY WORK SHOWN ON THIS SHEET IS DONE BY OTHERS.  
 NO PAYMENT WILL BE MADE TO THE CONTRACTOR FOR UTILITY WORK SHOWN ON THIS SHEET.



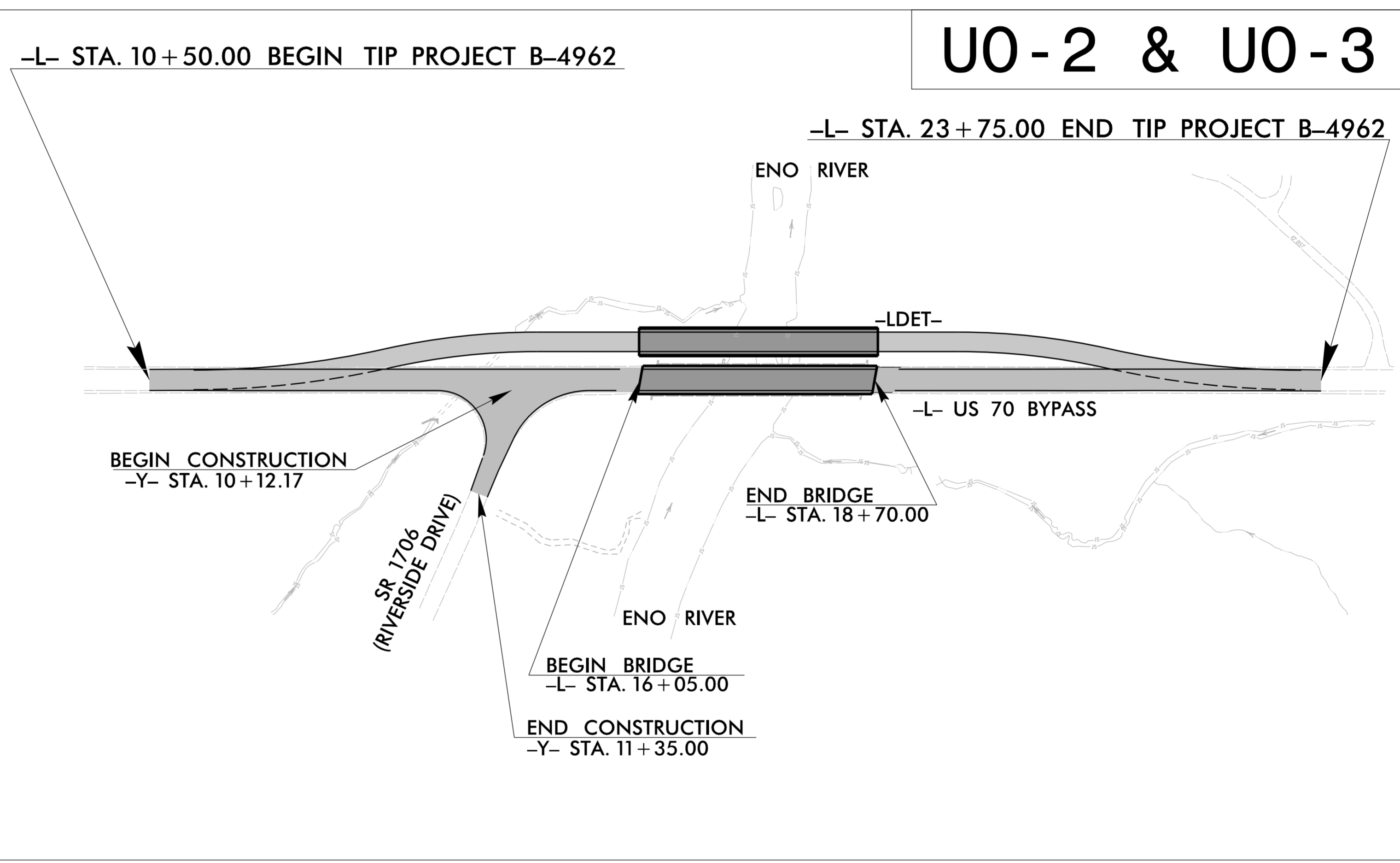
STATE OF NORTH CAROLINA  
 DIVISION OF HIGHWAYS

**UTILITIES BY OTHERS PLANS  
 ORANGE COUNTY**

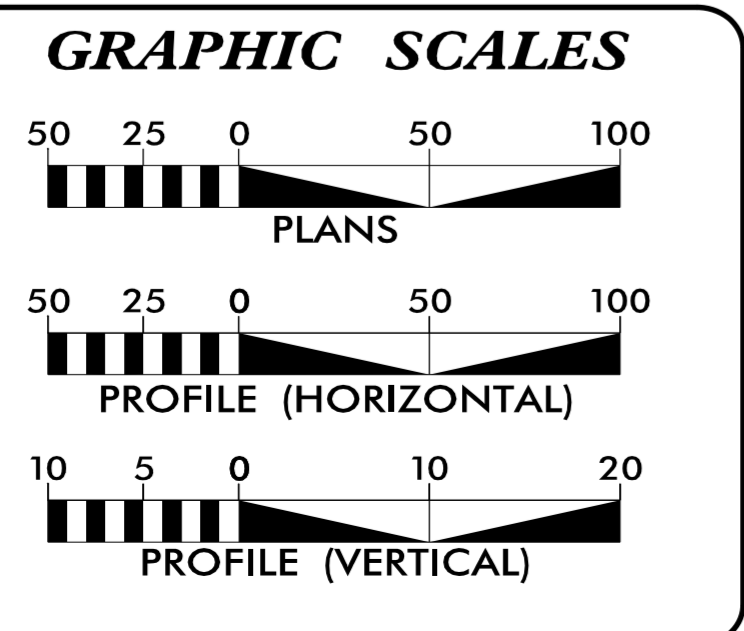
LOCATION: BRIDGE NO. 46 OVER ENO RIVER ON US 70 BYPASS  
 TYPE OF WORK: POWER AND TELEPHONE RELOCATION



VICINITY MAP



TIP PROJECT: B-4962



**INDEX OF SHEETS**

| SHEET NO.:     | DESCRIPTION:    |
|----------------|-----------------|
| UO-1           | TITLE SHEET     |
| UO-2 THRU UO-3 | UBO PLAN SHEETS |

**UTILITY OWNERS WITH CONFLICTS**

|  |
|--|
| (A) POWER (DISTRIBUTION) - DUKE ENERGY |
| (B) TELEPHONE - CENTURYLINK            |

PREPARED IN THE OFFICE OF:

**CH ENGINEERING**

3220 GLEN ROYAL RD. RALEIGH, NC 27617  
 TELE 919.788.0224 FAX 919.788.0232  
 NC LICENSE #P-0189

**UTILITIES PROJECT ENGINEER**  
 Mary Jo Lee, P.E.

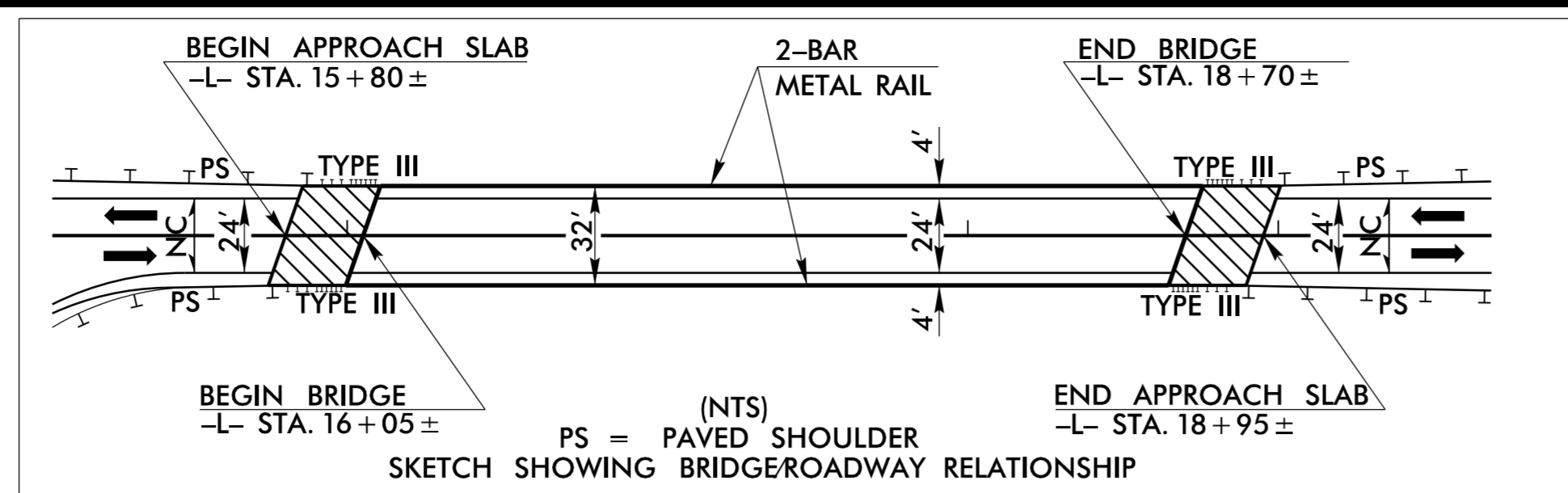
**DIVISION OF HIGHWAYS  
 UTILITIES UNIT**  
 1555 MAIL SERVICES CENTER  
 RALEIGH, NC 27699-1555  
 PHONE (919) 707-6690  
 FAX (919) 250-4151

|                    |                              |
|--------------------|------------------------------|
| TUCKER MARTIN, PE  | UTILITIES ENGINEER           |
| DAYTON MARTIN, III | REGIONAL UTILITY COORDINATOR |
| O'HARA PARKER      | SPECIAL PROJECTS COORDINATOR |

I:\10\2019\Projects\Utilities\UBO\Proj\B4962\ut\_tsh\_u001.dgn  
 USER: USER

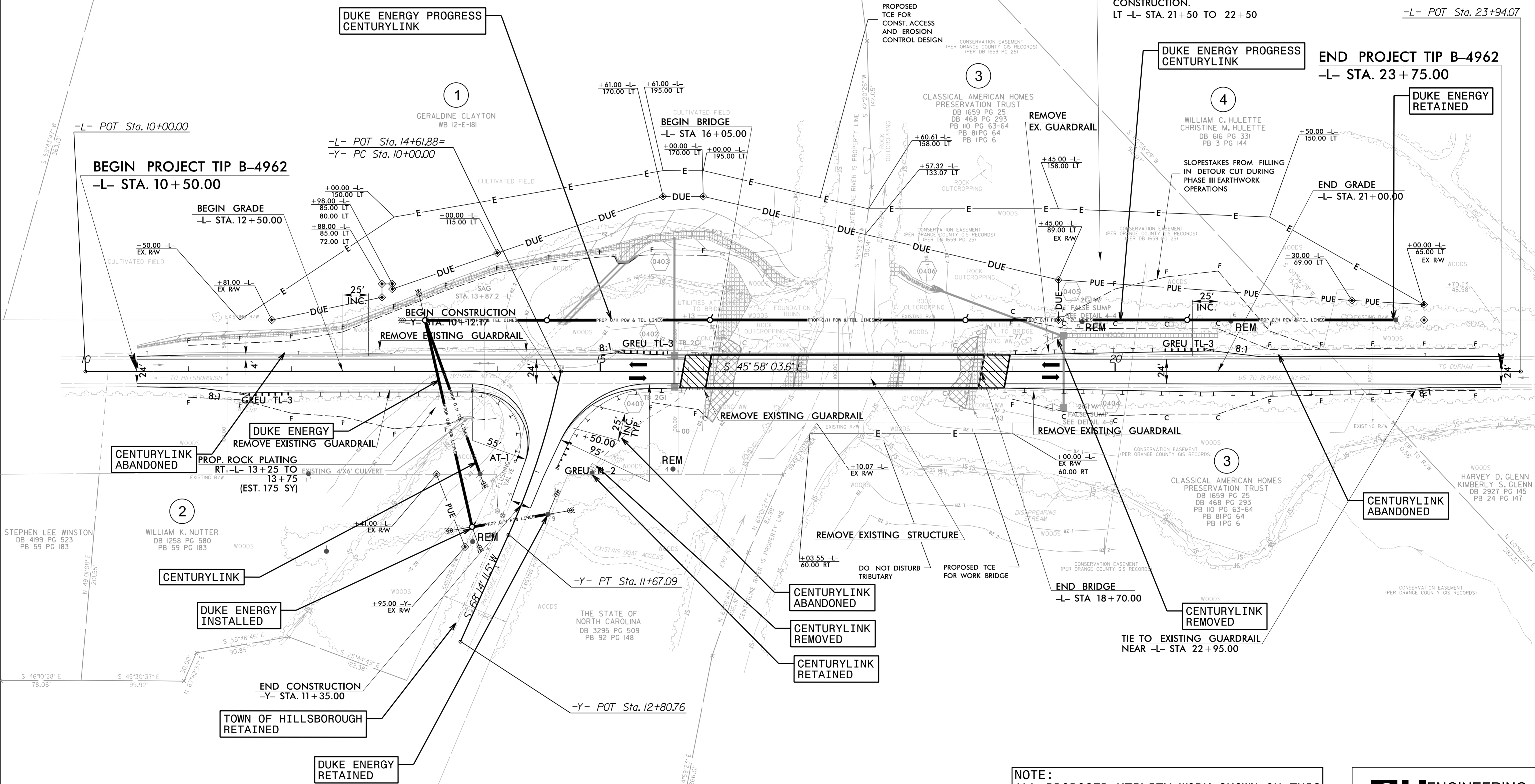
### UTILITIES BY OTHERS

ALL PROPOSED UTILITY WORK SHOWN ON THIS SHEET WILL BE DONE BY OTHERS. NO PAYMENT WILL BE MADE TO THE CONTRACTOR FOR PROPOSED UTILITY WORK SHOWN ON THIS SHEET.



MAD 8/31/RS 2007

JOHN PILIPCHUK  
JOHNNA WEBB PILIPCHUK  
DB 2336 PG 371  
PB 88 PG 144



**NOTE:**  
ALL PROPOSED UTILITY WORK SHOWN ON THIS SHEET WILL BE DONE AFTER THE CONSTRUCTION OF THE PROPOSED BRIDGE.

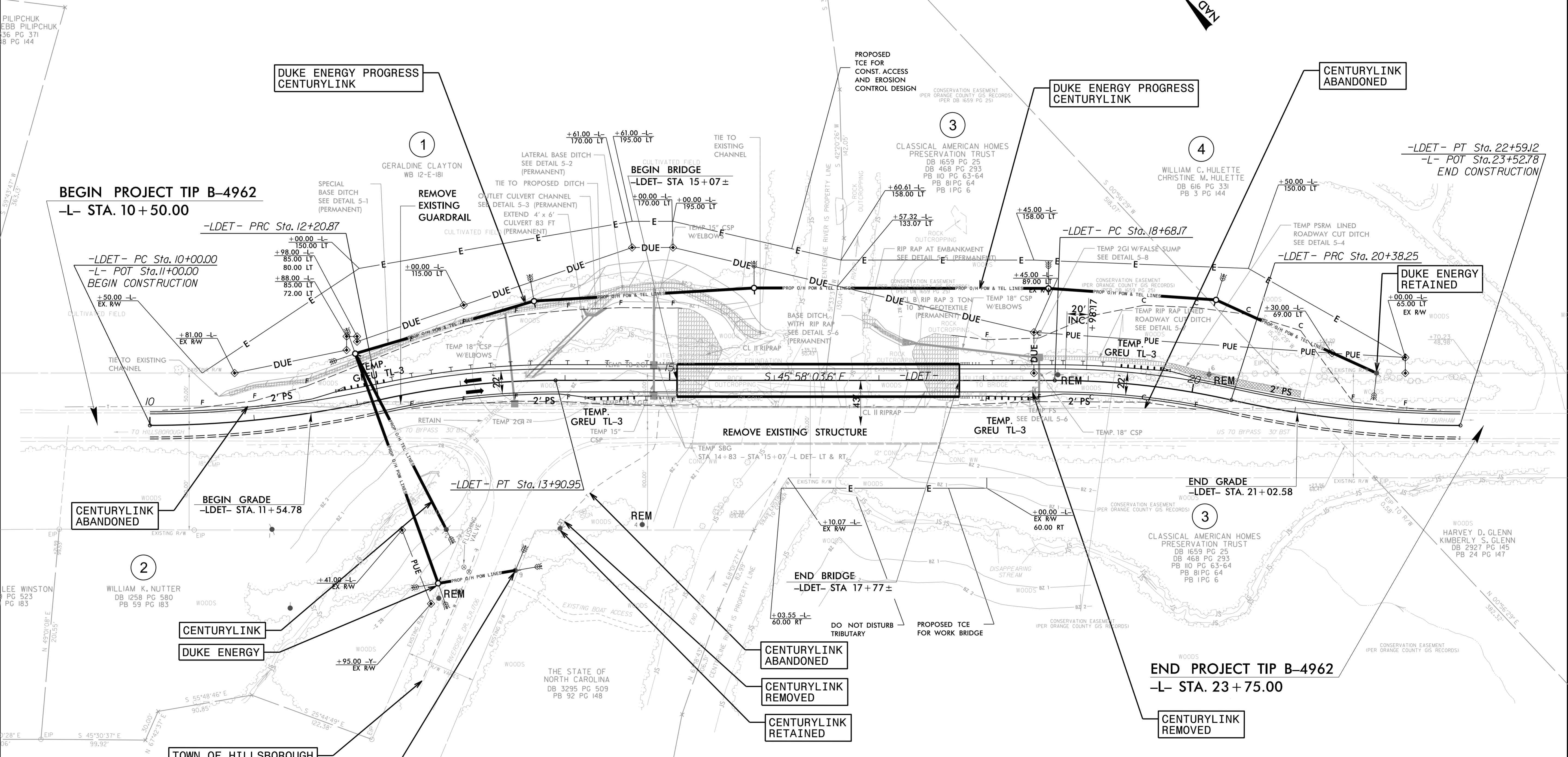
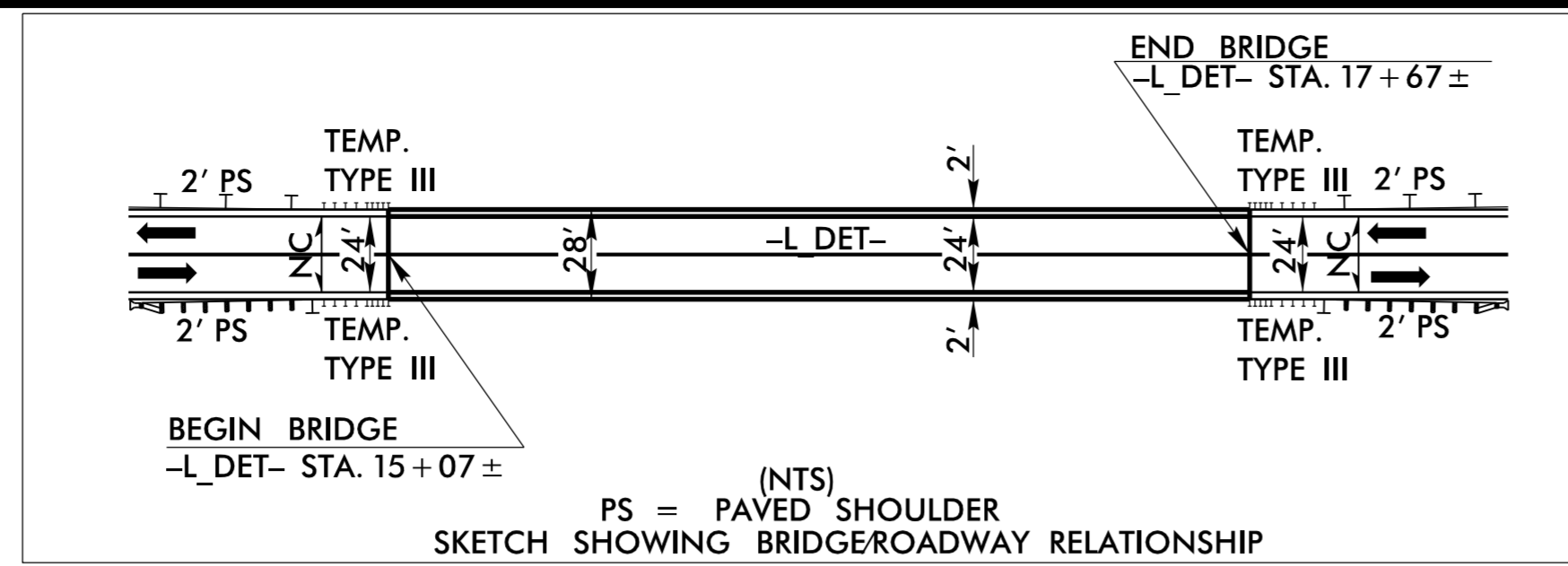
**CH ENGINEERING**  
3220 GLEN ROYAL RD. RALEIGH, NC 27617  
TELE 919.788.0224 FAX 919.788.0232  
NC LICENSE #P.0189

5/14/09  
C:\Users\jphillips\Documents\Engineering\UBD\Projects\B4962\rdy4\_U002.psh.dgn

# - DETOUR -

## UTILITIES BY OTHERS

ALL PROPOSED UTILITY WORK SHOWN ON THIS SHEET WILL BE DONE BY OTHERS. NO PAYMENT WILL BE MADE TO THE CONTRACTOR FOR PROPOSED UTILITY WORK SHOWN ON THIS SHEET.



NOTE: SR 1706 (RIVERSIDE DRIVE) TO REMAIN CLOSED DURING THE DURATION OF THE ON-SITE DETOUR. ACCESS WILL BE PROVIDED BY THE WESTERN ACCESS OF SR 1706 (RIVERSIDE DRIVE) TO US 70 BYPASS.

NOTE:  
ALL PROPOSED UTILITY WORK SHOWN ON THIS SHEET WILL BE DONE ONCE NCDOT CONTRACTOR HAS FINISHED GRADING & INSTALLING AN ACCESS DRIVE FOR TEMPORARY POLE INSTALLATION.

**CH ENGINEERING**  
 3220 GLEN ROYAL RD. RALEIGH, NC 27617  
 TELE 919.788.0224 FAX 919.788.0232  
 NC LICENSE #P-0189

5/14/09  
 P:\Projects\Engineering\UBD\Proj\B4962\ut.rdy5\_U003.psh.dgn  
 10/20/2019 10:58:11 AM