

CHANNEL C34  
FIELD HUB C  
NC 54 AT I-40 WB  
RACK MOUNTED PATCH PANELS

## FIELD HUB C - CITY OF DURHAM: RACK MOUNTED PATCH PANEL ASSIGNMENTS

### Cable F087 - RACK 1

To Splice Enclosure on I-40 West of I-40 Ramps (North)

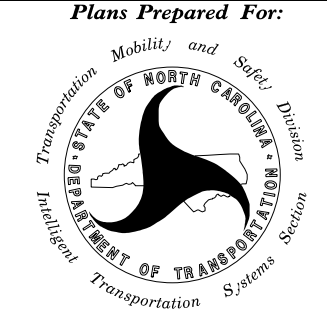
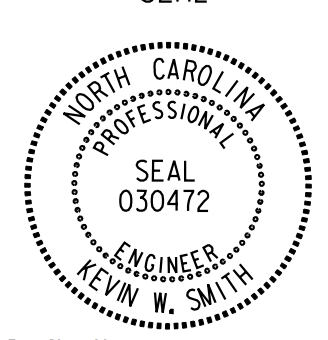
BUFFER	FIBER	DESC	BUFFER	FIBER	DESC	BUFFER	FIBER	DESC	BUFFER	FIBER	DESC	BUFFER	FIBER	DESC	BUFFER	FIBER	DESC
<b>BLUE</b>	BL		<b>ORANGE</b>	BL	C37	<b>GREEN</b>	BL		<b>BROWN</b>	BL		<b>SLATE</b>	BL		<b>WHITE</b>	BL	C2C - TMC
	O			O	C37		O			O	C2C - TMC						
	G			G	C38		G			G	C2C - TMC						
	BR			BR	C38		BR			BR	C2C - TMC						
	S			S			S			S	C2C - TMC						
	W			W			W			W	C2C - TMC						
	R	C34		R			R			R	C2C - TMC						
	BK	C34		BK			BK			BK	C2C - TMC						
	Y	C35		Y			Y			Y	C2C - TMC						
	V	C35		V			V			V	C2C - TMC						
RS	C36	RS		RS		RS	C2C - TMC										
A	C36	A		A		A	C2C - TMC										

### Cable F089 - RACK 2

To Splice Cabinet 05-0940 at I-40 WB Ramp - Channel C33 (South)

BUFFER	FIBER	DESC	BUFFER	FIBER	DESC	BUFFER	FIBER	DESC	BUFFER	FIBER	DESC	BUFFER	FIBER	DESC	BUFFER	FIBER	DESC
<b>BLUE</b>	BL	C31	<b>ORANGE</b>	BL		<b>GREEN</b>	BL		<b>BROWN</b>	BL		<b>SLATE</b>	BL	C2C - SS	<b>WHITE</b>	BL	C2C - SS
	O	C31		O			O			O	C2C - SS						
	G	C32		G			G			G	C2C - SS						
	BR	C32		BR			BR			BR	C2C - SS						
	S	C33		S			S			S	C2C - SS						
	W	C33		W			W			W	C2C - SS						
	R			R			R			R	C2C - SS						
	BK			BK			BK			BK	C2C - SS						
	Y			Y			Y			Y	C2C - SS						
	V			V			V			V	C2C - SS						
RS		RS		RS		RS	C2C - SS										
A		A		A		A	C2C - SS										

**LEGEND**  
C2C - CENTER TO CENTER  
EOC - EMERGENCY OPERATIONS CENTER  
TS - TECH SHOP (DIV-5 MAINTENANCE OFFICE)  
SS - SIGNAL SHOP  
COURT - COUNTY COURTHOUSE

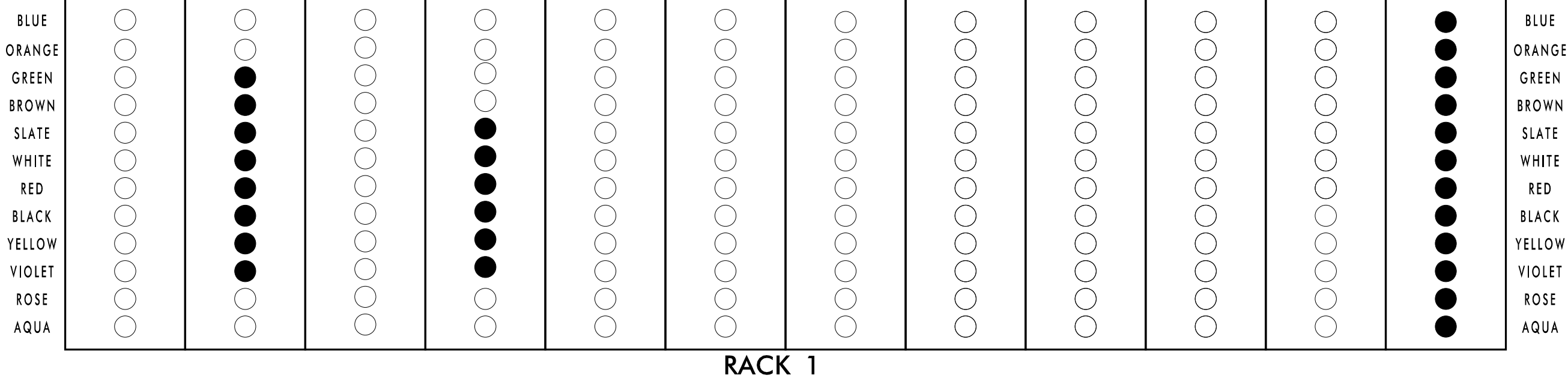
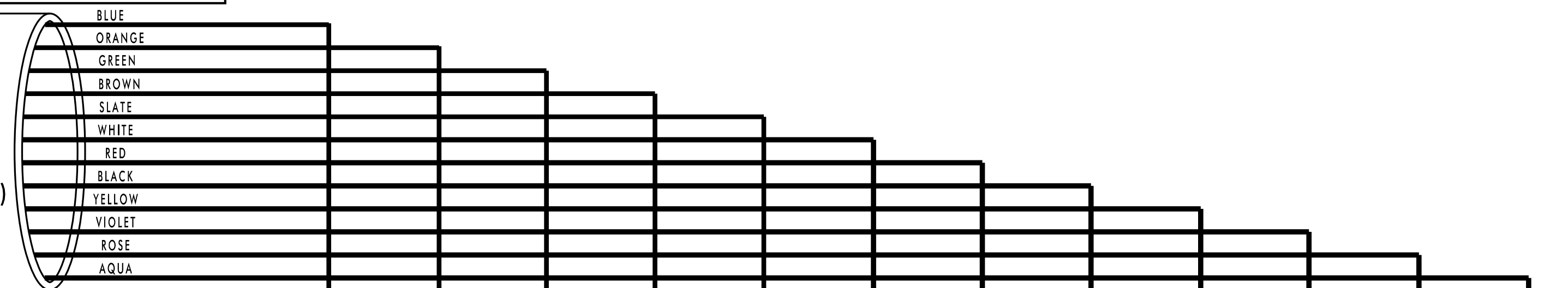
 Plans Prepared For: Transportation Mobility and Safety Division STATE OF NORTH CAROLINA Department of Transportation Raleigh, NC 27636 Tel: (919) 677-2000 Fax: (919) 677-2050	CITY OF DURHAM COMPUTERIZED SIGNAL SYSTEM		SEAL  KEVIN W. SMITH ENGINEER 030472
	DIVISION 05 PLAN DATE: DEC 2018 PREPARED BY: KHA	DURHAM COUNTY REVIEWED BY: N. MENGELKOCH REVIEWED BY: K. SMITH	
REVISIONS _____		INIT. DATE _____	Documented by: _____ DATE: 1/7/2019 CADD Filename:

**Kimley»Horn**  
 NC License #F-0102  
 421 Fayetteville St., Suite 600  
 Raleigh, NC 27636  
 Tel: (919) 677-2000  
 Fax: (919) 677-2050

CITY HALL PLAZA  
RACK MOUNTED PATCH PANELS

CABLE F040 TO  
INTERSECTION 05-0290  
(CHAPEL HILL ST AT  
MANGUM ST - CHANNEL A10)

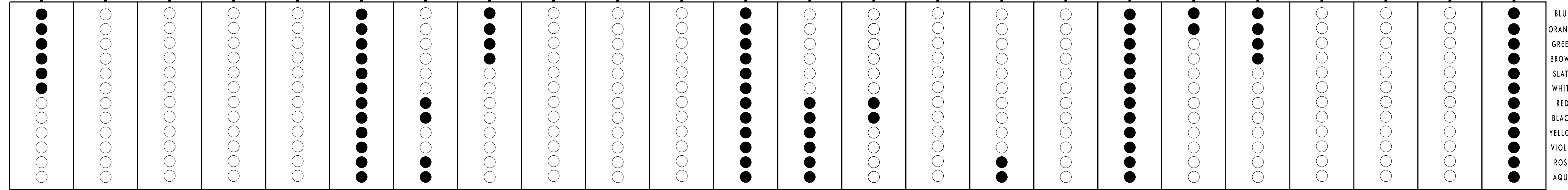
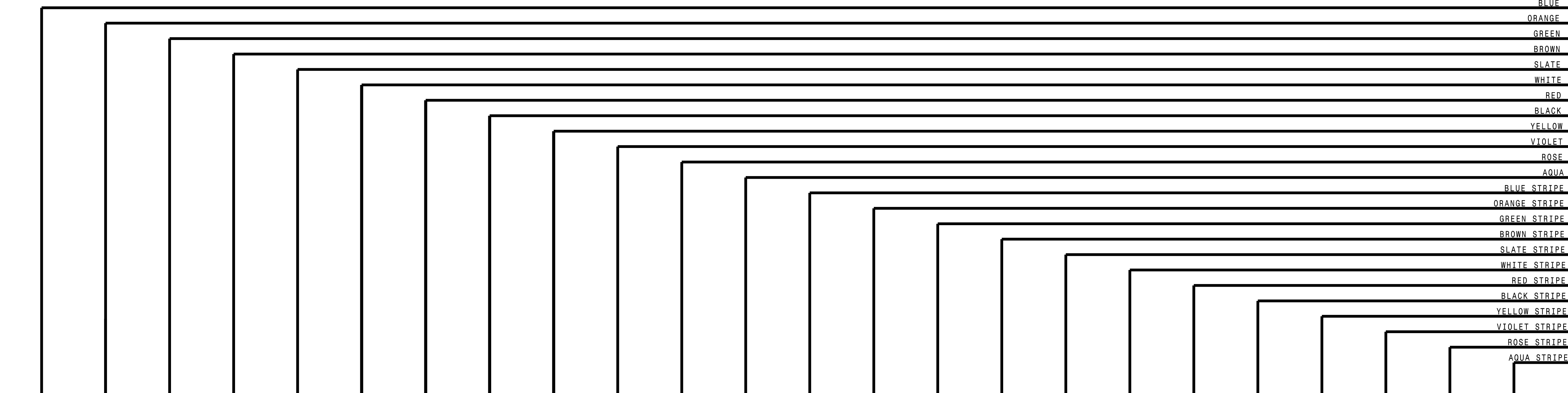
144 FIBERS IN 12 BUFFER TUBES



RACK 1

CABLE F001 TO  
INTERSECTION 05-0984  
(HOLLOWAY ST AT  
ROXBORO ST -  
CHANNEL B22)

288 FIBERS IN 24 BUFFER TUBES



RACK 2

**COLOR CODE**  
TIA/EIA 598-C

(1) BLUE	(7) RED
(2) ORANGE	(8) BLACK
(3) GREEN	(9) YELLOW
(4) BROWN	(10) VIOLET
(5) SLATE	(11) ROSE
(6) WHITE	(12) AQUA

**LEGEND**

- X - FUSION SPLICE INDIVIDUAL FIBER
- - EXISTING SPLICE
- - EXPRESS INDIVIDUAL FIBER

EXPRESS: EXPRESS ENTIRE BUFFER TUBE  
SPLICE: SPLICE ENTIRE BUFFER TUBE OR MAINTAIN IF EXISTING EXPRESSED

**NOTES:**

- FIBER INTERCONNECT CENTER RACKS ARE SCHEMATIC ONLY - ACTUAL EQUIPMENT FORM MAY VARY.
- ETHERNET SWITCH TERMINATION CONFIGURATIONS ARE GENERIC. CONTRACTOR IS RESPONSIBLE FOR DETERMINING /ENSURING PROPER TERMINATION.
- CONTRACTOR IS RESPONSIBLE FOR FIELD VERIFYING EXISTING SPLICING. THE CONTRACTOR SHALL COORDINATE WITH THE ENGINEER WHERE EXISTING SPLICING IS NOT AS EXPECTED.

1/7/2019 K:\ARL\_TPTD\_LITS\01036410 - Durham Signal System\Plans\Splicing\U-5968-LTS.spl\_400-CITY HALL PLAZA.dgn

**Kimley»Horn**  
NC License #F-0102  
421 Fayetteville St., Suite 600  
Raleigh, NC 27636  
Tel: (919) 677-2000  
Fax: (919) 677-2050

Plans Prepared For:  
Durham Mobility and Safety Division  
CITY OF DURHAM  
DEPARTMENT OF TRANSPORTATION  
Signal System

250 N. Greenfield Place, Garner, NC 27529

CITY OF DURHAM COMPUTERIZED SIGNAL SYSTEM

DIVISION 05		DURHAM COUNTY	
PLAN DATE: DEC 2018	REVIEWED BY: N. MENGELKOCH		
PREPARED BY: KHA	REVIEWED BY: K. SMITH		
REVISIONS	INIT.	DATE	

SEAL

NORTH CAROLINA PROFESSIONAL ENGINEER  
SEAL 030472  
KEVIN W. SMITH

DocuSigned by:  
Kevin W. Smith  
1/7/2019

CADD Filename:

CITY HALL PLAZA  
RACK MOUNTED PATCH PANELS

## CITY HALL - CITY OF DURHAM: RACK MOUNTED PATCH PANEL ASSIGNMENTS

**Cable F040**

To Splice Cabinet 05-0290 at Chapel Hill St at Mangum St (North)

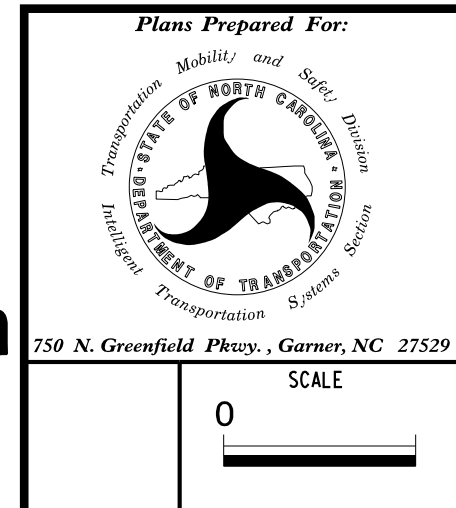
BUFFER	FIBER	DESC	BUFFER	FIBER	DESC	BUFFER	FIBER	DESC	BUFFER	FIBER	DESC	BUFFER	FIBER	DESC	BUFFER	FIBER	DESC						
<b>BLUE</b>	BL		<b>ORANGE</b>	BL		<b>GREEN</b>	BL		<b>BROWN</b>	BL		<b>SLATE</b>	BL		<b>WHITE</b>	BL							
	O			O			O			O			O			O		O					
	G	A08		G	A08		G	A08		G	A08		G	A08		G	A08	G	A08	G	A08	G	A08
	BR	A08		BR	A08		BR	A08		BR	A08		BR	A08		BR	A08	BR	A08	BR	A08	BR	A08
	S	A09		S	A09		S	A09		S	A09		S	A09		S	A09	S	A09	S	A09	S	A09
	W	A09		W	A09		W	A09		W	A09		W	A09		W	A09	W	A09	W	A09	W	A09
	R	A10		R	A10		R	A10		R	A10		R	A10		R	A10	R	A10	R	A10	R	A10
	BK	A10		BK	A10		BK	A10		BK	A10		BK	A10		BK	A10	BK	A10	BK	A10	BK	A10
	Y	A11		Y	A11		Y	A11		Y	A11		Y	A11		Y	A11	Y	A11	Y	A11	Y	A11
	V	A11		V	A11		V	A11		V	A11		V	A11		V	A11	V	A11	V	A11	V	A11
RS		RS		RS		RS		RS		RS		RS		RS		RS							
A		A		A		A		A		A		A		A		A							
<b>RED</b>	BL		<b>BLACK</b>	BL		<b>YELLOW</b>	BL		<b>VIOLET</b>	BL		<b>ROSE</b>	BL		<b>AQUA</b>	BL	C2C-SS						
	O			O			O			O			O			O		O		O	C2C-SS		
	G			G			G			G			G			G		G		G	C2C-SS		
	BR			BR			BR			BR			BR			BR		BR		BR	C2C-SS		
	S			S			S			S			S			S		S		S	C2C-SS		
	W			W			W			W			W			W		W		W	C2C-SS		
	R			R			R			R			R			R		R		R	C2C-SS		
	BK			BK			BK			BK			BK			BK		BK		BK	C2C-SS		
	Y			Y			Y			Y			Y			Y		Y		Y	C2C-SS		
	V			V			V			V			V			V		V		V	C2C-SS		
RS		RS		RS		RS		RS		RS		RS		RS	C2C-SS								
A		A		A		A		A		A		A		A	C2C-SS								

**LEGEND**

C2C - CENTER TO CENTER  
EOC - EMERGENCY OPERATIONS CENTER  
TS - TECH SHOP (DIV-5 MAINTENANCE OFFICE)  
SS - SIGNAL SHOP  
COURT - COUNTY COURTHOUSE

I:\7\2019\KARAL\_TPTD\_LITS\01036410 - Durham Signal System\Plans\Splicing\U-5968-LITS脾\_401\_CITY\_HALL\_Assignment\_Tables.dgn

**Kimley»Horn**  
NC License #F-0102  
421 Fayetteville St., Suite 600  
Raleigh, NC 27636  
Tel: (919) 677-2000  
Fax: (919) 677-2050



<b>CITY OF DURHAM COMPUTERIZED SIGNAL SYSTEM</b>	
DIVISION 05	DURHAM COUNTY
PLAN DATE: DEC 2018	REVIEWED BY: N. MENGELKOCH
PREPARED BY: KHA	REVIEWED BY: K. SMITH
REVISIONS	INIT. DATE

SEAL

NORTH CAROLINA  
PROFESSIONAL  
ENGINEER  
KEVIN W. SMITH  
SEAL  
030472

DocuSigned by:  
*Kevin W. Smith*  
SIGNATURE DATE 1/7/2019

CADD File name:

CITY HALL PLAZA  
RACK MOUNTED PATCH PANELS

**Cable F001**

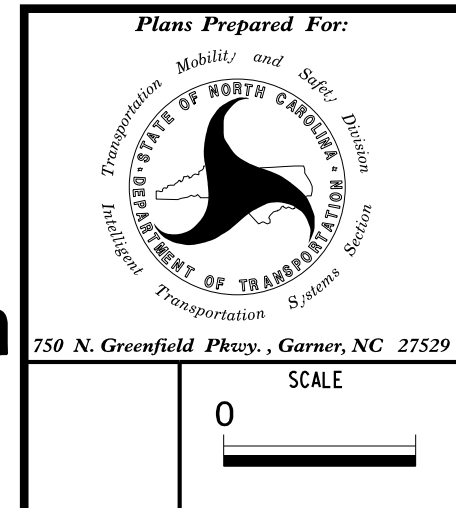
To Splice Cabinet 05-0984 at Holloway St at Roxboro St (South)

BUFFER	FIBER	DESC	BUFFER	FIBER	DESC	BUFFER	FIBER	DESC	BUFFER	FIBER	DESC	BUFFER	FIBER	DESC	BUFFER	FIBER	DESC
<b>BLUE</b>	BL	A01	<b>ORANGE</b>	BL		<b>GREEN</b>	BL		<b>BROWN</b>	BL		<b>SLATE</b>	BL		<b>WHITE</b>	BL	C2C-HUB A
	O	A01		O			O			O			O			O	C2C-HUB A
	G	A02		G			G			G			G			G	C2C-HUB A
	BR	A02		BR			BR			BR			BR			BR	C2C-HUB A
	S	A03		S			S			S			S			S	C2C-HUB A
	W	A03		W			W			W			W			W	C2C-HUB A
	R			R			R			R			R			R	C2C-HUB A
	BK			BK			BK			BK			BK			BK	C2C-HUB A
	Y			Y			Y			Y			Y			Y	C2C-HUB A
	V			V			V			V			V			V	C2C-HUB A
RS		RS		RS		RS		RS		RS	C2C-HUB A						
A		A		A		A		A		A	C2C-HUB A						
<b>RED</b>	BL		<b>BLACK</b>	BL	C37	<b>YELLOW</b>	BL		<b>VIOLET</b>	BL		<b>ROSE</b>	BL		<b>AQUA</b>	BL	C2C-HUB C
	O			O	C37		O			O			O			O	C2C-HUB C
	G			G	C38		G			G			G			G	C2C-HUB C
	BR			BR	C38		BR			BR			BR			BR	C2C-HUB C
	S			S			S			S			S			S	C2C-HUB C
	W			W			W			W			W			W	C2C-HUB C
	R	C34		R			R			R			R			R	C2C-HUB C
	BK	C34		BK			BK			BK			BK			BK	C2C-HUB C
	Y			Y			Y			Y			Y			Y	C2C-HUB C
	V			V			V			V			V			V	C2C-HUB C
RS	C36	RS		RS		RS		RS		RS	C2C-HUB C						
A	C36	A		A		A		A		A	C2C-HUB C						

**LEGEND**  
 C2C - CENTER TO CENTER  
 EOC - EMERGENCY OPERATIONS CENTER  
 TS - TECH SHOP (DIV-5 MAINTENANCE OFFICE)  
 SS - SIGNAL SHOP  
 COURT - COUNTY COURTHOUSE

1/7/2019 K:\ARL\TPTD\ITS\01036410 - Durham Signal System\Plans\Splicing\U-5968-ITS.spl\_402-CITY HALL Assignment - Tables2.dgn

**Kimley»Horn**  
 NC License #F-0102  
 421 Fayetteville St., Suite 600  
 Raleigh, NC 27636  
 Tel: (919) 677-2000  
 Fax: (919) 677-2050



CITY OF DURHAM COMPUTERIZED SIGNAL SYSTEM	
DIVISION 05	DURHAM COUNTY
PLAN DATE: DEC 2018	REVIEWED BY: N. MENGELKOCH
PREPARED BY: KHA	REVIEWED BY: K. SMITH
REVISIONS	INIT. DATE

SEAL  
 NORTH CAROLINA PROFESSIONAL ENGINEER  
 KEVIN W. SMITH  
 SEAL 030472  
 1/7/2019  
 CADD Filename:

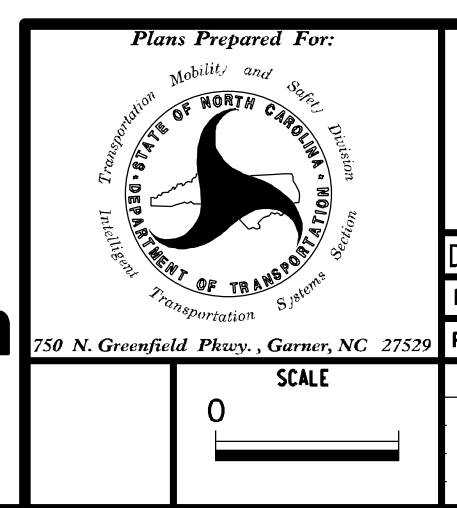
CITY HALL PLAZA  
RACK MOUNTED PATCH PANELS

Cable F001																					
To Splice Cabinet 05-0984 at Holloway St at Roxboro St (South)																					
BUFFER	FIBER	DESC	BUFFER	FIBER	DESC	BUFFER	FIBER	DESC	BUFFER	FIBER	DESC	BUFFER	FIBER	DESC	BUFFER	FIBER	DESC				
<b>BLUE STRIPE</b>	BL		<b>ORANGE STRIPE</b>	BL		<b>GREEN STRIPE</b>	BL		<b>BROWN STRIPE</b>	BL		<b>SLATE STRIPE</b>	BL		<b>WHITE STRIPE</b>	BL	C2C-HUB B				
	O			O			O			O			O			O		O		O	C2C-HUB B
	G			G			G			G			G			G		G		G	C2C-HUB B
	BR			BR			BR			BR			BR			BR		BR		BR	C2C-HUB B
	S			S			S			S			S			S		S		S	C2C-HUB B
	W			W			W			W			W			W		W		W	C2C-HUB B
	R	B19		R	B25		R	B25		R			R			R		R		R	C2C-HUB B
	BK	B19		BK	B25		BK			BK			BK			BK		BK		BK	C2C-HUB B
	Y	B20		Y			Y			Y			Y			Y		Y		Y	C2C-HUB B
	V	B20		V			V			V			V			V		V		V	C2C-HUB B
RS	B21	RS		RS		RS	C2C-COURT	RS		RS		RS		RS	C2C-HUB B						
A	B21	A		A		A	C2C-COURT	A		A		A		A	C2C-HUB B						
<b>RED STRIPE</b>	BL	B16	<b>BLACK STRIPE</b>	BL	B22	<b>YELLOW STRIPE</b>	BL		<b>VIOLET STRIPE</b>	BL		<b>ROSE STRIPE</b>	BL		<b>AQUA STRIPE</b>	BL	C2C-SS				
	O	B16		O	B22		O			O			O			O		O		O	C2C-SS
	G			G	B23		G			G			G			G		G		G	C2C-SS
	BR			BR	B23		BR			BR			BR			BR		BR		BR	C2C-SS
	S			S			S			S			S			S		S		S	C2C-SS
	W			W			W			W			W			W		W		W	C2C-SS
	R			R			R			R			R			R		R		R	C2C-SS
	BK			BK			BK			BK			BK			BK		BK		BK	C2C-SS
	Y			Y			Y			Y			Y			Y		Y		Y	C2C-SS
	V			V			V			V			V			V		V		V	C2C-SS
RS		RS		RS		RS		RS		RS		RS		RS	C2C-SS						
A		A		A		A		A		A		A		A	C2C-SS						

**LEGEND**  
 C2C - CENTER TO CENTER  
 EOC - EMERGENCY OPERATIONS CENTER  
 TS - TECH SHOP (DIV-5 MAINTENANCE OFFICE)  
 SS - SIGNAL SHOP  
 COURT - COUNTY COURTHOUSE

DATE: \$FILE\$

**Kimley»Horn**  
 NC License #F-0102  
 421 Fayetteville St., Suite 600  
 Raleigh, NC 27636  
 Tel: (919) 677-2000  
 Fax: (919) 677-2050

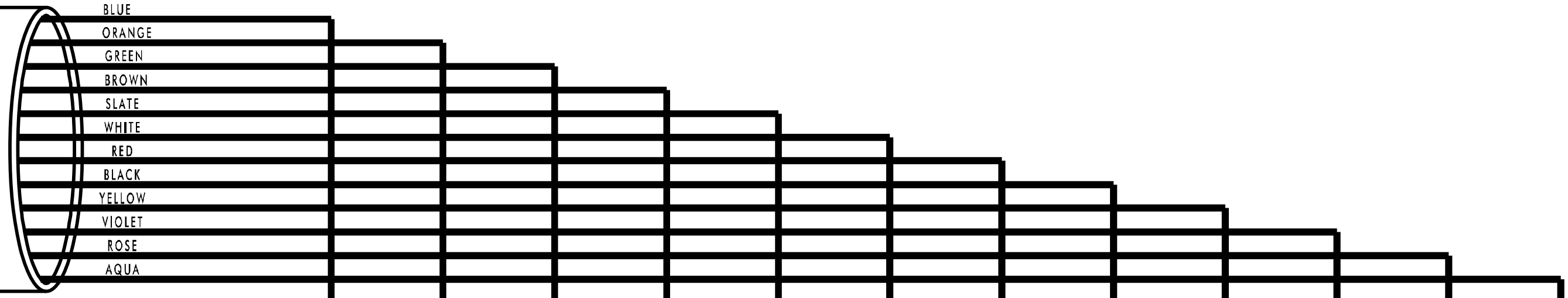


CITY OF DURHAM COMPUTERIZED SIGNAL SYSTEM	
SPLICE DETAIL	
DIVISION 05	DURHAM COUNTY
PLAN DATE: DEC 2018	REVIEWED BY: N. MENGELKOCH
PREPARED BY: KHA	REVIEWED BY: X. SMITH
REVISIONS	INIT. DATE

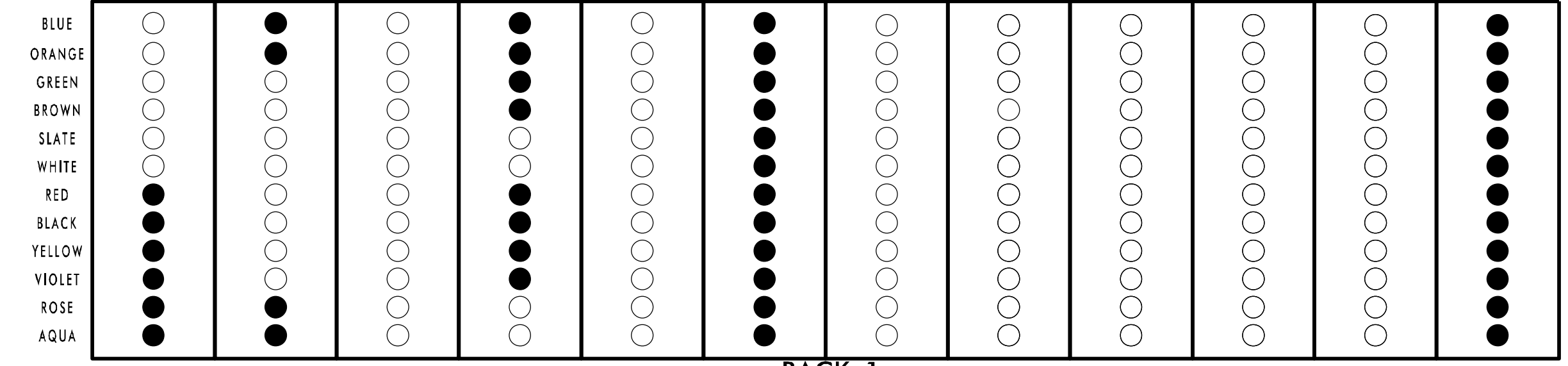
SEAL  
 NORTH CAROLINA PROFESSIONAL ENGINEER  
 KEVIN W. SMITH  
 12/19/2018  
 CADD Filename: \_\_\_\_\_

**SIGNAL SHOP  
RACK MOUNTED PATCH PANELS**

CABLE F021 TO  
INTERSECTION 05-2010  
(CHEEK RD AT MULDEE ST /MIDLAND  
TERRACE - CHANNEL A07)



144 FIBERS IN 12 BUFFER TUBES



RACK 1

**COLOR CODE**  
TIA/EIA 598-C

(1) BLUE	(7) RED
(2) ORANGE	(8) BLACK
(3) GREEN	(9) YELLOW
(4) BROWN	(10) VIOLET
(5) SLATE	(11) ROSE
(6) WHITE	(12) AQUA

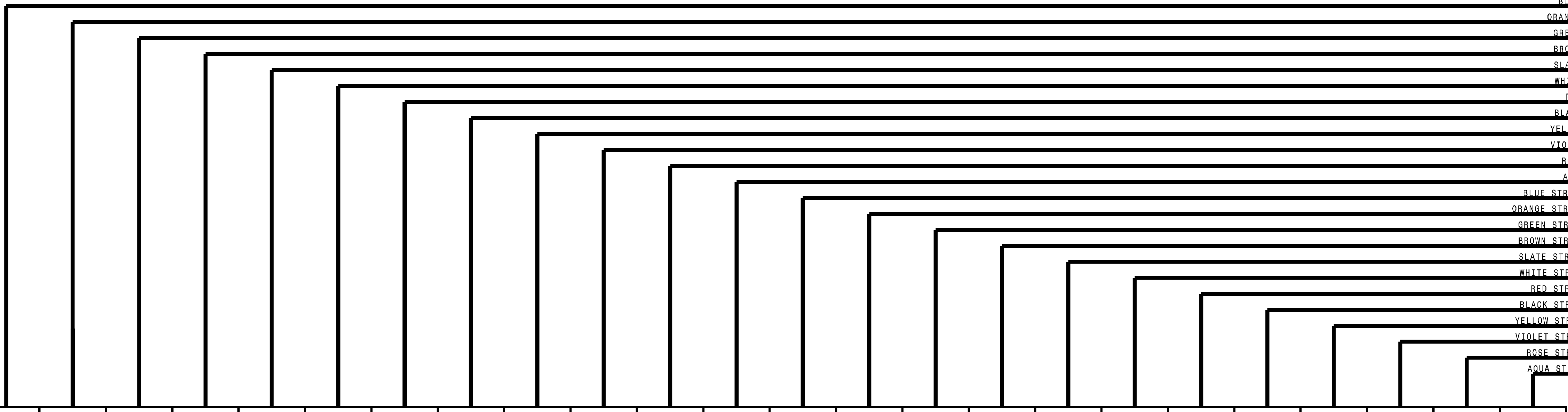
**LEGEND**

X - FUSION SPLICE INDIVIDUAL FIBER  
 O - EXISTING SPLICE  
 □ - EXPRESS INDIVIDUAL FIBER

EXPRESS - EXPRESS ENTIRE BUFFER TUBE  
 SPLICE - SPLICE ENTIRE BUFFER TUBE OR MAINTAIN IF EXISTING EXPRESSED

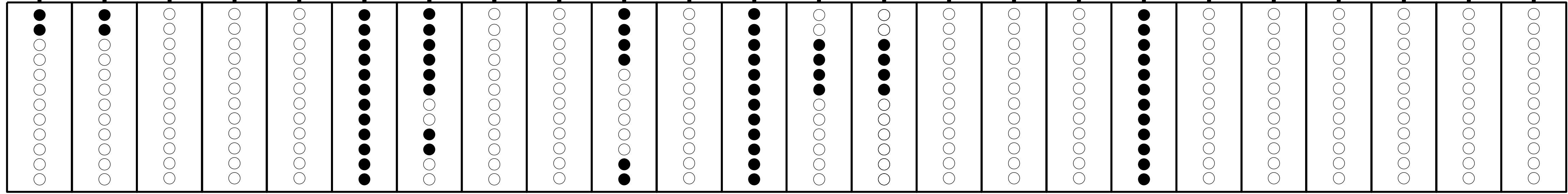
**NOTES:**

- FIBER INTERCONNECT CENTER RACKS ARE SCHEMATIC ONLY - ACTUAL EQUIPMENT FORM MAY VARY.
- ETHERNET SWITCH TERMINATION CONFIGURATIONS ARE GENERIC. CONTRACTOR IS RESPONSIBLE FOR DETERMINING /ENSURING PROPER TERMINATION.
- CONTRACTOR IS RESPONSIBLE FOR FIELD VERIFYING EXISTING SPLICING. THE CONTRACTOR SHALL COORDINATE WITH THE ENGINEER WHERE EXISTING SPLICING IS NOT AS EXPECTED.



CABLE F020 TO  
INTERSECTION 05-1717  
(HOLLOWAY ST AT US 70  
WB RAMP  
- CHANNEL B16)

288 FIBERS IN 24 BUFFER TUBES



RACK 2

DATE \$ FILE \$

**Kimley Horn**  
 NC License #F-0102  
 421 Fayetteville St., Suite 600  
 Raleigh, NC 27636  
 Tel: (919) 677-2000  
 Fax: (919) 677-2050

Plans Prepared For:

**CITY OF DURHAM COMPUTERIZED SIGNAL SYSTEM**

**SPLICE DETAIL**

DIVISION 05 DURHAM COUNTY

PLAN DATE: DEC 2018 REVIEWED BY: N. MENGELKOCH

PREPARED BY: KHA REVIEWED BY: K. SMITH

SCALE: 0

REVISIONS: \_\_\_\_\_ INIT. DATE

SEAL: NORTH CAROLINA PROFESSIONAL ENGINEER SEAL 030472 KEVIN W. SMITH

DocuSigned by: Kevin W. Smith 12/19/2018

CADD File name: \_\_\_\_\_