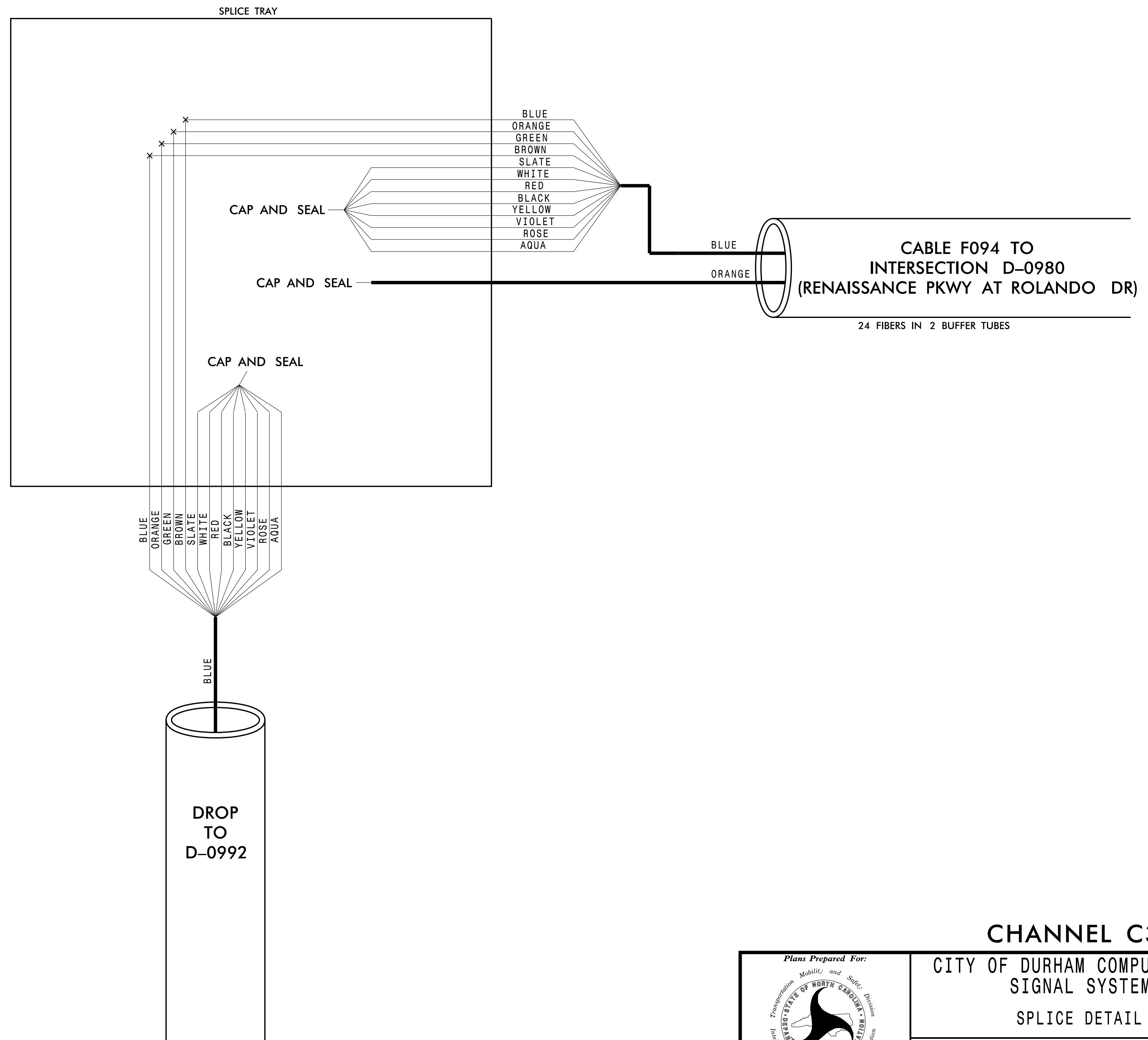
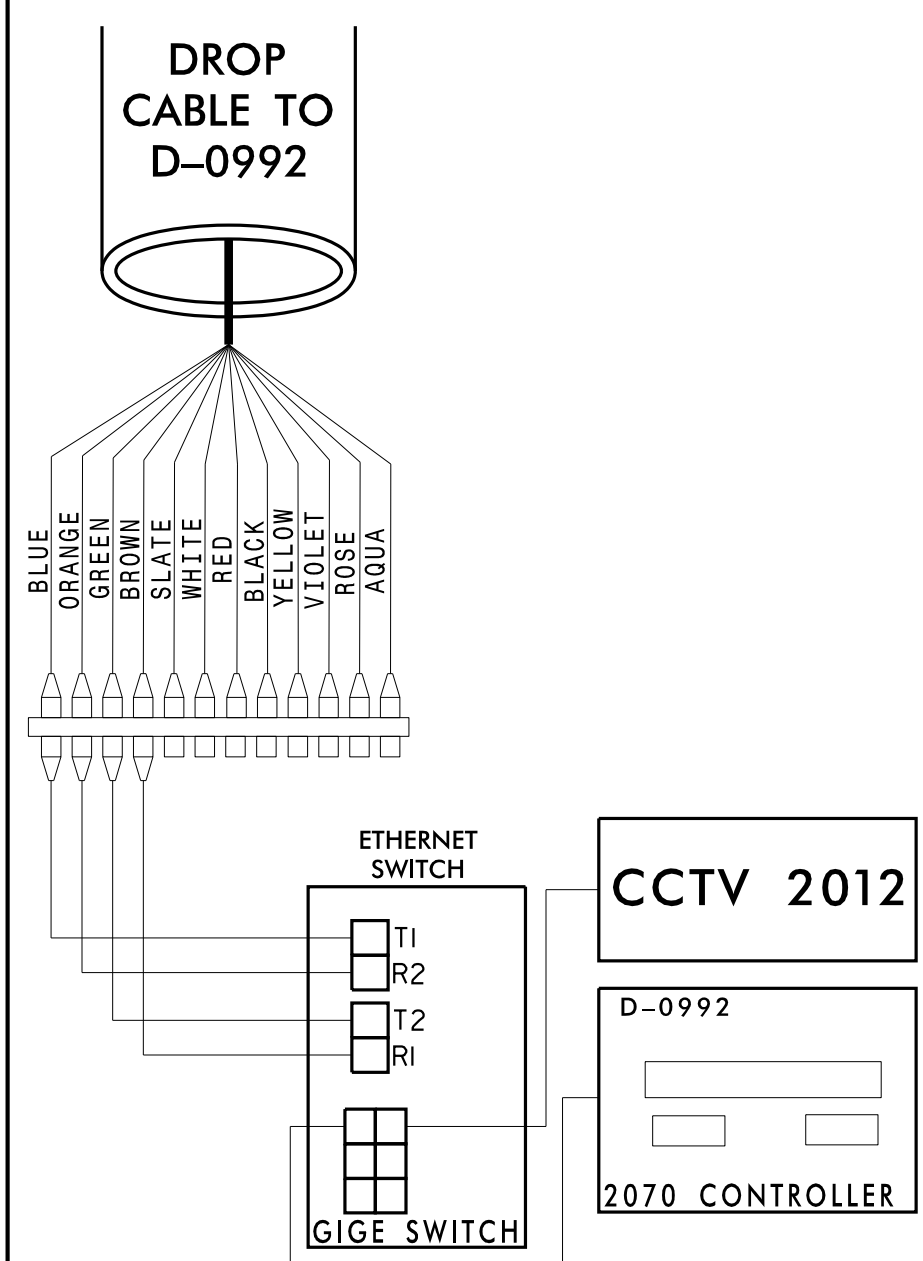


**CHANNEL C32
SPLICE ENCLOSURE AT
(RENAISSANCE PKWY AT
SOUTHPOINT MALL ENTRANCE)
SIG ID D-0992
CCTV 2012**

COLOR CODE TIA/EIA 598-C		LEGEND	
(1) BLUE	(7) RED	X	FUSION SPLICE INDIVIDUAL FIBER
(2) ORANGE	(8) BLACK	O	EXISTING SPLICE
(3) GREEN	(9) YELLOW	□	EXPRESS INDIVIDUAL FIBER
(4) BROWN	(10) VIOLET	EXPRESS	EXPRESS ENTIRE BUFFER TUBE
(5) SLATE	(11) ROSE	SPLICE	SPLICE ENTIRE BUFFER TUBE OR MAINTAIN IF EXISTING EXPRESSED
(6) WHITE	(12) AQUA	NOTES:	
		1. FIBER INTERCONNECT CENTER RACKS ARE SCHEMATIC ONLY - ACTUAL EQUIPMENT FORM MAY VARY.	
		2. ETHERNET SWITCH TERMINATION CONFIGURATIONS ARE GENERIC. CONTRACTOR IS RESPONSIBLE FOR DETERMINING /ENSURING PROPER TERMINATION.	
		3. CONTRACTOR IS RESPONSIBLE FOR FIELD VERIFYING EXISTING SPlicing. THE CONTRACTOR SHALL COORDINATE WITH THE ENGINEER WHERE EXISTING SPlicing IS NOT AS EXPECTED.	



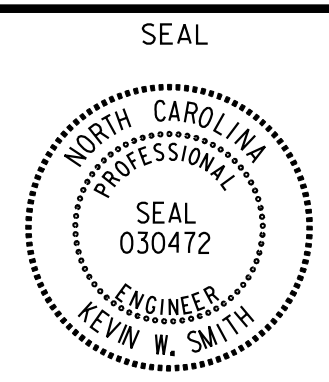
CABINET AT INTERSECTION D-0992



CHANNEL C32

**CITY OF DURHAM COMPUTERIZED
SIGNAL SYSTEM
SPLICE DETAIL**

DIVISION 05		DURHAM COUNTY	
PLAN DATE: DEC 2018	REVIEWED BY: N. MENDELKOCH	PREPARED BY: KHA	REVIEWED BY: K. SMITH
REVISIONS	INIT.	DATE	



Kimley»Horn
NC License #F-0102
421 Fayetteville St., Suite 600
Raleigh, NC 27636
Tel: (919) 677-2000
Fax: (919) 677-2050

Plans Prepared For:
CITY OF DURHAM
Department of Transportation
250 N. Greenfield Place, Garner, NC 27529

SCALE
0

DocuSigned by:
Kevin W. Smith
12/19/2018
CADD Filename:

12/17/2018 K:\ARL_TPTD_ITS\01036410 - Durham Signal System\Plans\Splicing\U-5968_ITS_spl_C32_300.D-0992.dgn

**CHANNEL C32
 SPLICE ENCLOSURE AT
 (RENAISSANCE PKWY AT
 ROLANDO DR)
 SIG ID D-0980
 CCTV 2013**

**COLOR CODE
 TIA/EIA 598-C**

(1) BLUE	(7) RED
(2) ORANGE	(8) BLACK
(3) GREEN	(9) YELLOW
(4) BROWN	(10) VIOLET
(5) SLATE	(11) ROSE
(6) WHITE	(12) AQUA

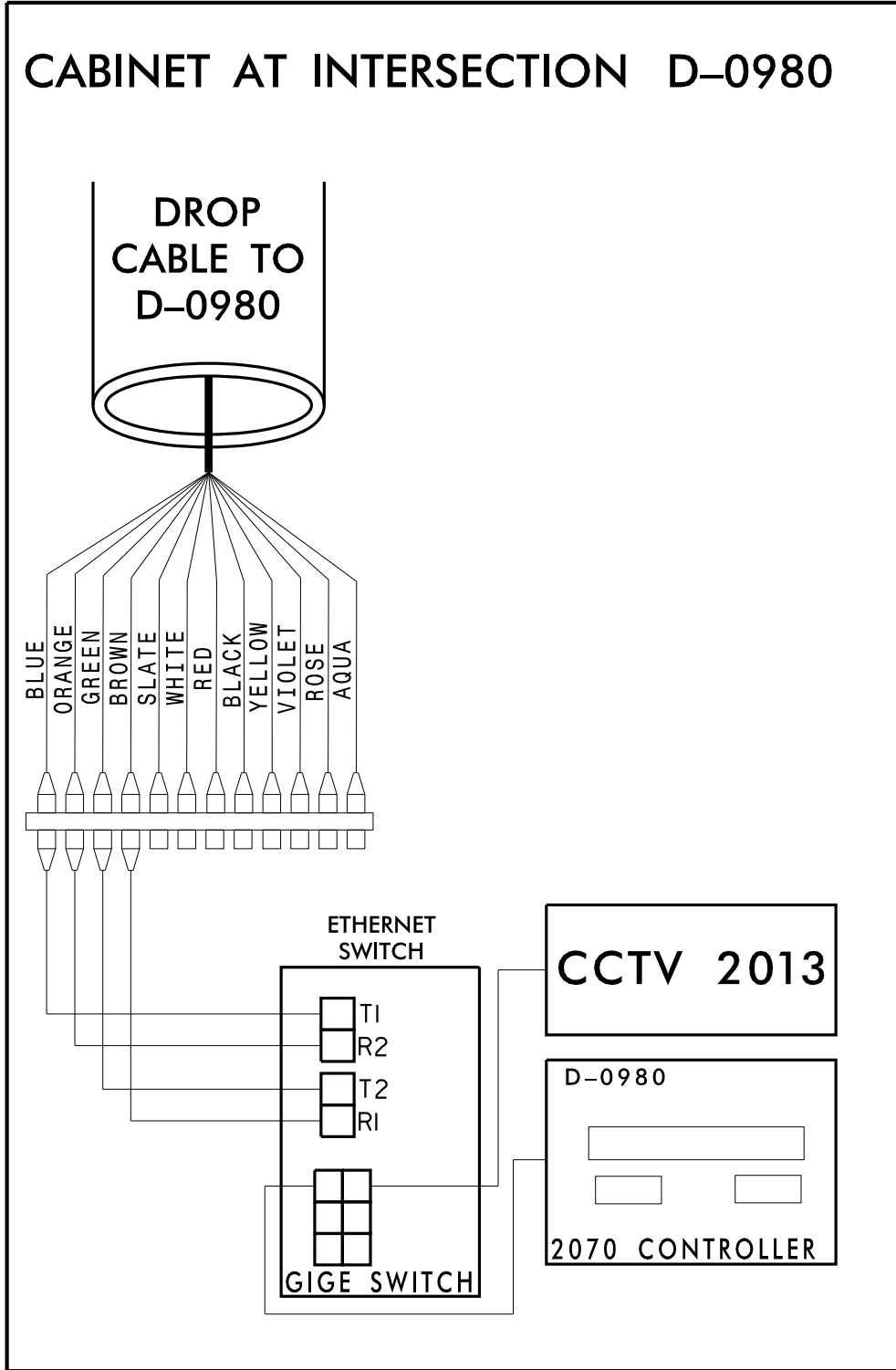
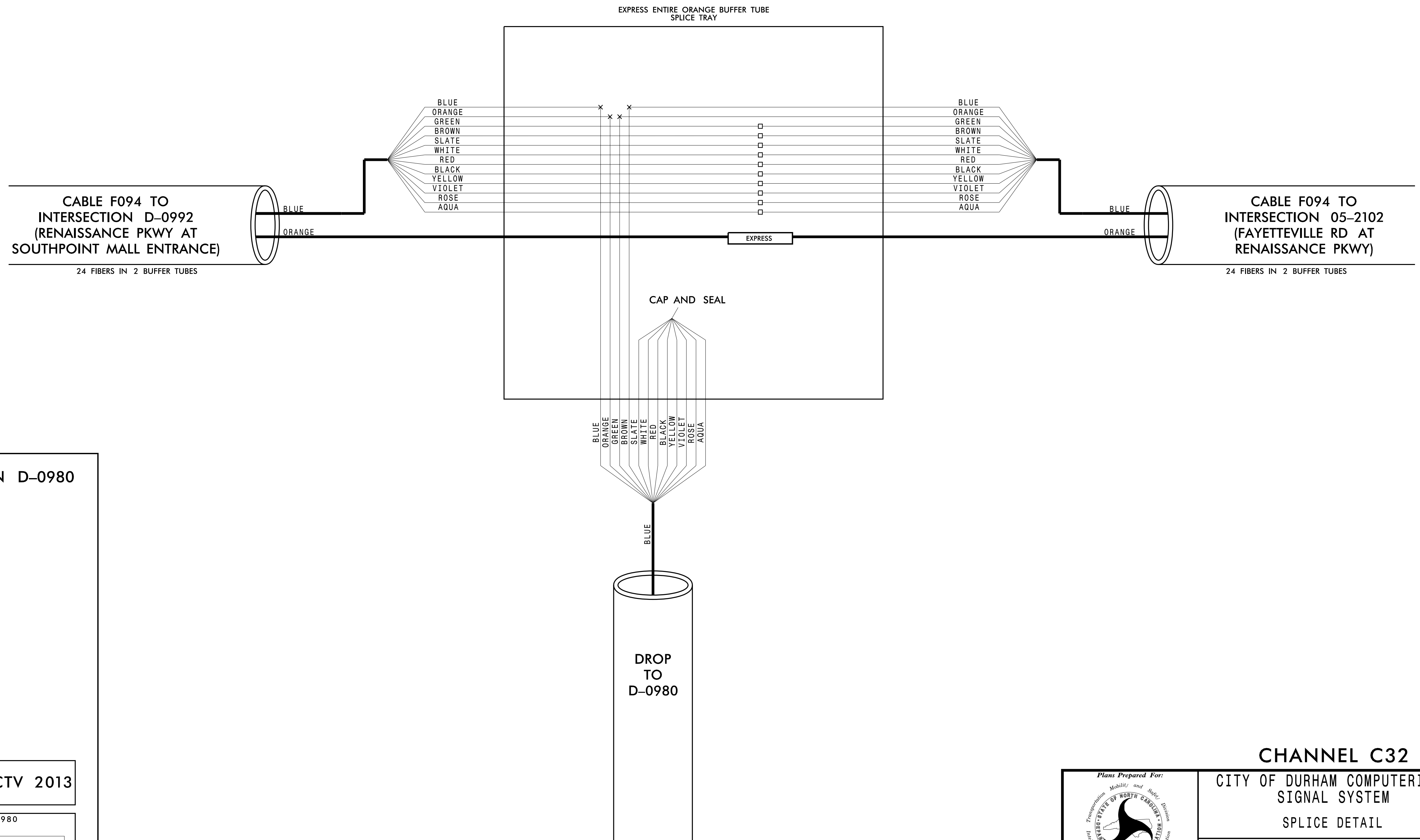
LEGEND

X - FUSION SPLICE INDIVIDUAL FIBER
 O - EXISTING SPLICE
 □ - EXPRESS INDIVIDUAL FIBER

EXPRESS - EXPRESS ENTIRE BUFFER TUBE
 SPLICE - SPLICE ENTIRE BUFFER TUBE OR MAINTAIN IF EXISTING EXPRESSED

NOTES:

- FIBER INTERCONNECT CENTER RACKS ARE SCHEMATIC ONLY - ACTUAL EQUIPMENT FORM MAY VARY.
- ETHERNET SWITCH TERMINATION CONFIGURATIONS ARE GENERIC. CONTRACTOR IS RESPONSIBLE FOR DETERMINING /ENSURING PROPER TERMINATION.
- CONTRACTOR IS RESPONSIBLE FOR FIELD VERIFYING EXISTING SPLICING. THE CONTRACTOR SHALL COORDINATE WITH THE ENGINEER WHERE EXISTING SPLICING IS NOT AS EXPECTED.



CHANNEL C32

CITY OF DURHAM COMPUTERIZED SIGNAL SYSTEM
 SPLICE DETAIL

DIVISION 05 DURHAM COUNTY

PLAN DATE: DEC 2018 REVIEWED BY: N. MENGELKOCH

PREPARED BY: KHA REVIEWED BY: K. SMITH

REVISIONS	INIT.	DATE

SEAL
 NORTH CAROLINA PROFESSIONAL ENGINEER
 KEVIN W. SMITH
 SEAL 030472

DocuSigned by:
 Kevin W. Smith
 12/19/2018

CADD Filename:

Kimley»Horn

NC License #F-0102
 421 Fayetteville St., Suite 600
 Raleigh, NC 27636
 Tel: (919) 677-2000
 Fax: (919) 677-2050

12/17/2018 K:\ARL_TPTD_ITS\01036410 - Durham Signal System\Plans\Splicing\U-5968_ITS_spl.Chc32_301.D-0980.dgn

**CHANNEL C32
 SPLICE ENCLOSURE AT
 (FAYETTEVILLE RD AT
 RENAISSANCE PKWY)
 SIG ID 05-2102
 CCTV 2014**

**COLOR CODE
 TIA/EIA 598-C**

(1) BLUE	(7) RED
(2) ORANGE	(8) BLACK
(3) GREEN	(9) YELLOW
(4) BROWN	(10) VIOLET
(5) SLATE	(11) ROSE
(6) WHITE	(12) AQUA

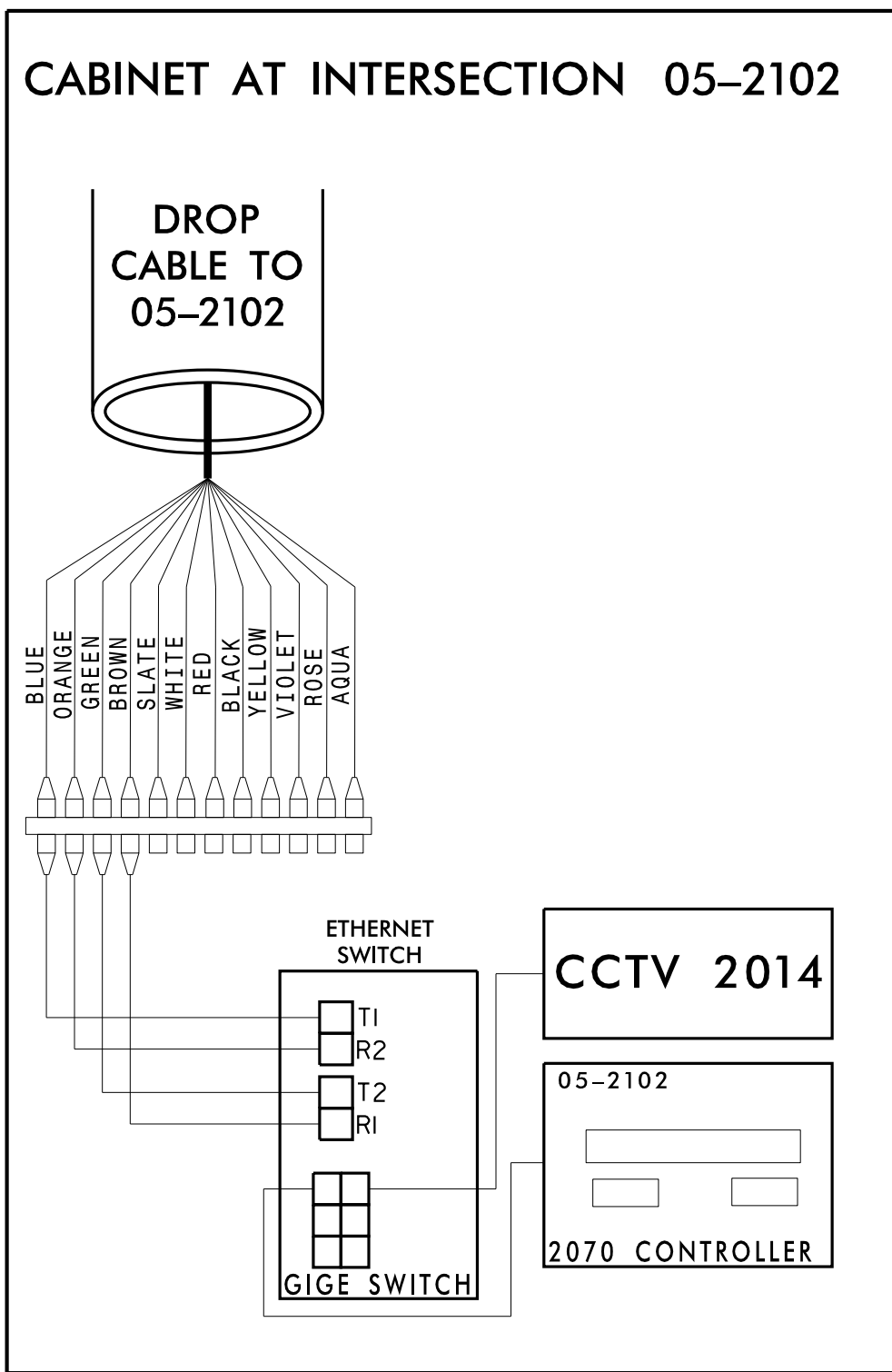
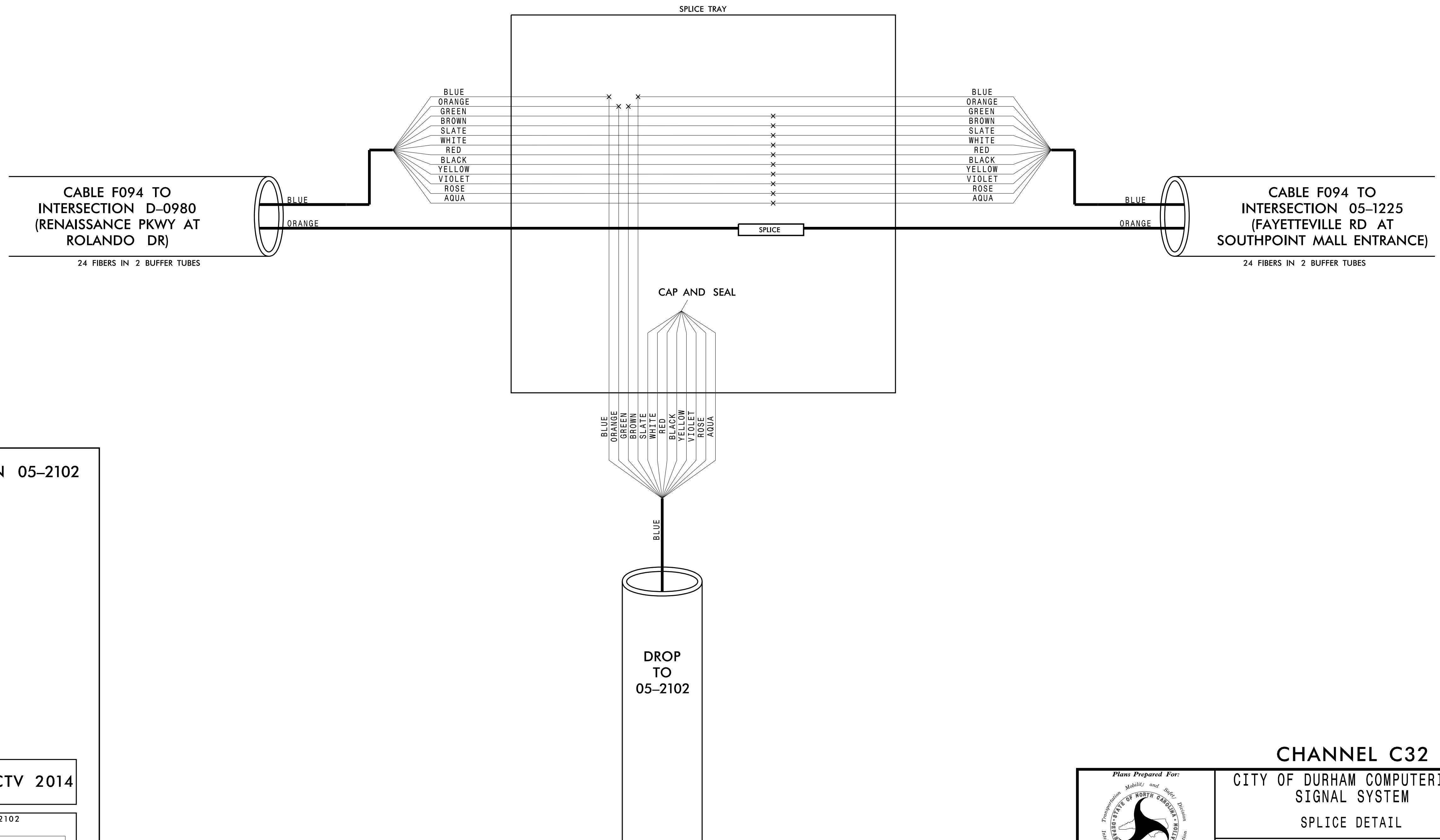
LEGEND

X - FUSION SPLICE INDIVIDUAL FIBER
 O - EXISTING SPLICE
 □ - EXPRESS INDIVIDUAL FIBER

EXPRESS - EXPRESS ENTIRE BUFFER TUBE
 SPLICE - SPLICE ENTIRE BUFFER TUBE OR MAINTAIN IF EXISTING EXPRESSED

NOTES:

- FIBER INTERCONNECT CENTER RACKS ARE SCHEMATIC ONLY - ACTUAL EQUIPMENT FORM MAY VARY.
- ETHERNET SWITCH TERMINATION CONFIGURATIONS ARE GENERIC. CONTRACTOR IS RESPONSIBLE FOR DETERMINING /ENSURING PROPER TERMINATION.
- CONTRACTOR IS RESPONSIBLE FOR FIELD VERIFYING EXISTING SPlicing. THE CONTRACTOR SHALL COORDINATE WITH THE ENGINEER WHERE EXISTING SPlicing IS NOT AS EXPECTED.



CHANNEL C32

CITY OF DURHAM COMPUTERIZED SIGNAL SYSTEM
 SPLICE DETAIL

DIVISION 05 DURHAM COUNTY

PLAN DATE: DEC 2018 REVIEWED BY: N. MENGELKOCH

PREPARED BY: KHA REVIEWED BY: K. SMITH

REVISIONS	INIT.	DATE

Scale: 0

Kimley»Horn
 NC License #F-0102
 421 Fayetteville St., Suite 600
 Raleigh, NC 27636
 Tel: (919) 677-2000
 Fax: (919) 677-2050

Seal: NORTH CAROLINA PROFESSIONAL ENGINEER KEVIN W. SMITH SEAL 030472

DocuSigned by: Kevin W. Smith 12/19/2018

12/17/2018 K:\ARL_TPTD_ITS\01036410 - Durham Signal System\Plans\Splicing\U-5968_ITS_spl.CH32_302_05-2102.dgn