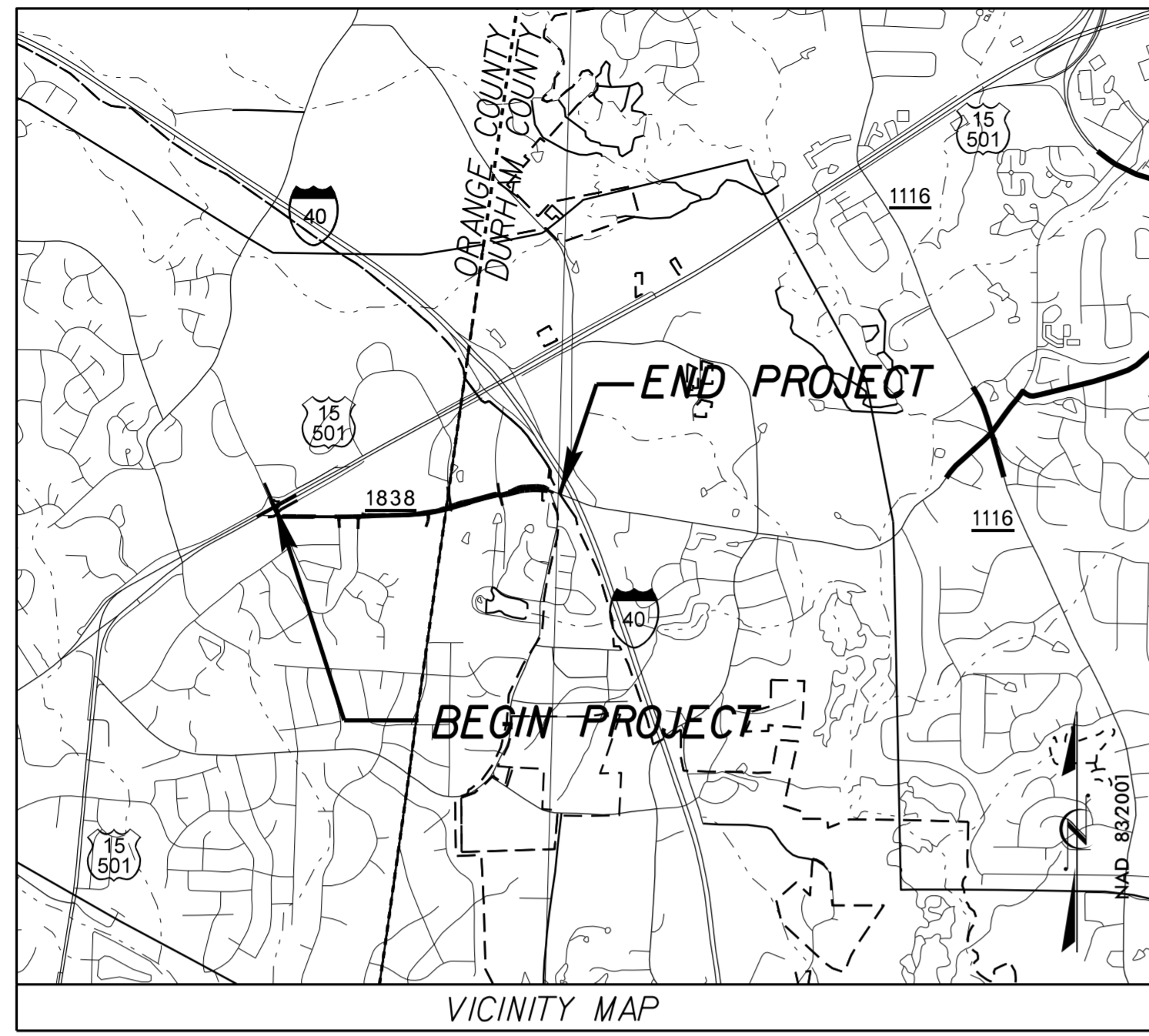


**This electronic collection of documents is provided  
for the convenience of the user  
and is Not a Certified Document –**

**The documents contained herein were originally issued  
and sealed by the individuals whose names and license  
numbers appear on each page, on the dates appearing  
with their signature on that page.**

**This file or an individual page  
shall not be considered a certified document.**

**TIP PROJECT: EB-4707A**



ORANGE AND DURHAM COUNTY

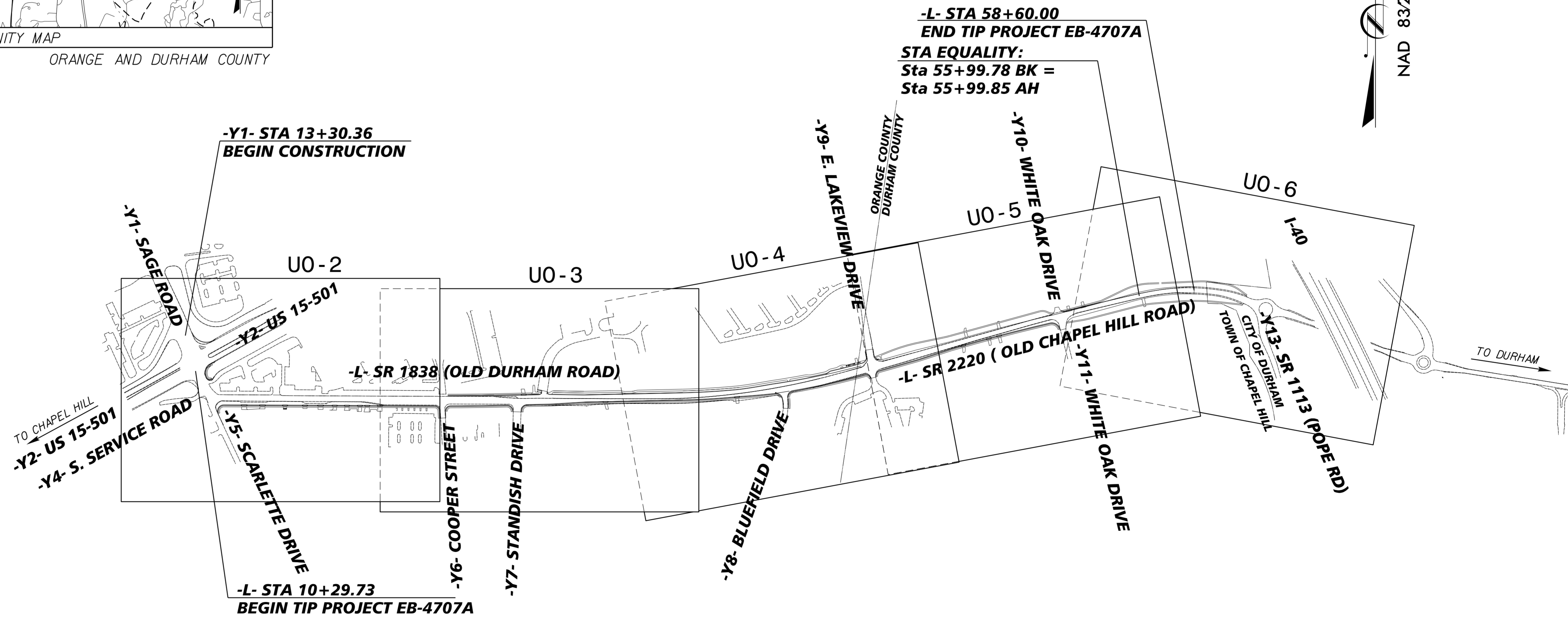
STATE OF NORTH CAROLINA  
DIVISION OF HIGHWAYS

**UTILITIES BY OTHERS PLANS  
ORANGE COUNTY**

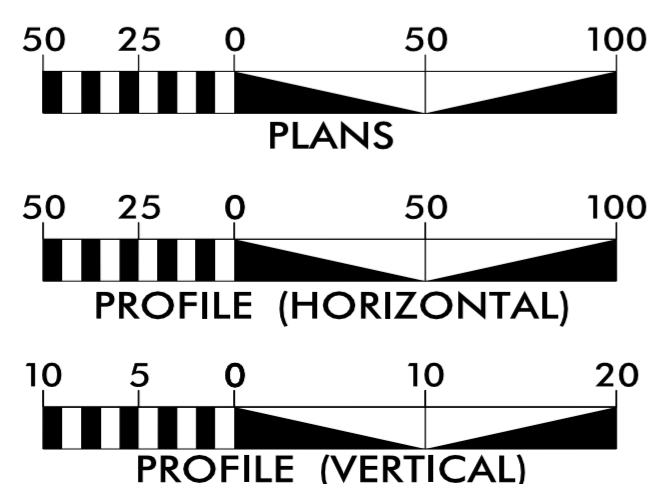
**LOCATION: SR 1838 (OLD DURHAM ROAD)/SR 2220 (OLD CHAPEL HILL ROAD)  
FROM US 15-501 IN ORANGE COUNTY  
TO SR 1113 (POPE ROAD) IN DURHAM COUNTY**  
**TYPE OF WORK: DISTRIBUTION POWER AND  
COMMUNICATIONS RELOCATION**

T.I.P. NO.	SHEET NO.
EB-4707A	UO-1

NOTE:  
ALL UTILITY WORK SHOWN ON THIS SHEET WILL BE DONE BY OTHERS.  
NO PAYMENT WILL BE MADE TO THE CONTRACTOR FOR UTILITY WORK SHOWN ON THIS SHEET.



**GRAPHIC SCALES**



**INDEX OF SHEETS**

SHEET NO.:	DESCRIPTION:
UO-1	TITLE SHEET
UO-2 THRU UO-6	UBO PLAN SHEETS

**UTILITY OWNERS WITH CONFLICTS**

- (A) DUKE ENERGY - DISTRIBUTION POWER
- (B) FRONTIER COMMUNICATIONS - COMMUNICATIONS
- (C) AT&T - COMMUNICATIONS
- (D) CHARTER /TWC - CATV
- (E) SPIRIT - COMMUNICATIONS
- (F) PSNC ENERGY - GAS
- (G) CENTURYLINK - COMMUNICATIONS
- (H) LEVEL 3 - COMMUNICATIONS

PREPARED IN THE OFFICE OF:



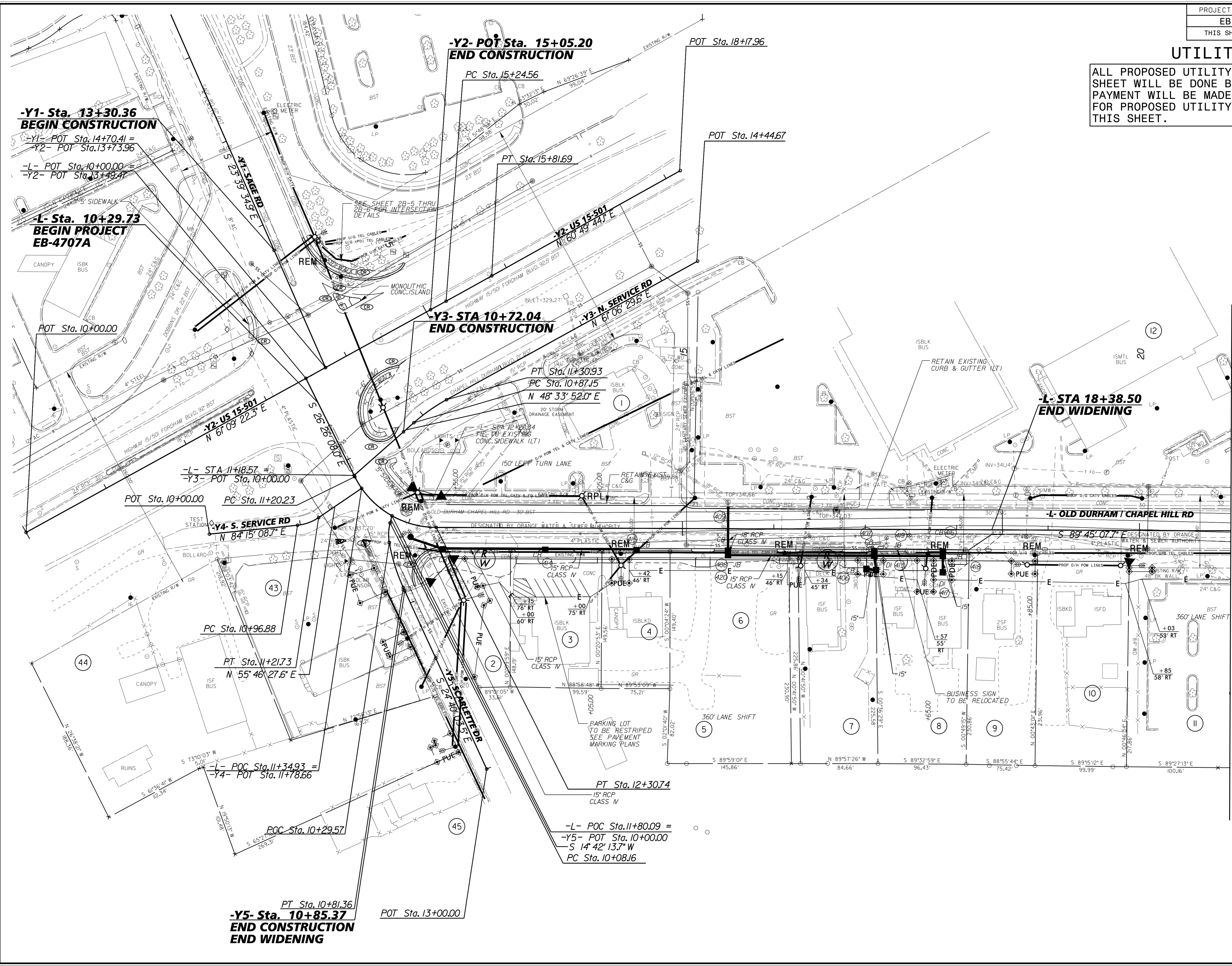
**DIVISION OF HIGHWAYS  
DIVISION 5  
PROJECT DELIVERY UNIT**

1555 MAIL SERVICES CENTER  
RALEIGH, NC 27699-1555  
PHONE (919) 707-6690  
FAX (919) 250-4151

**S. REID DAVIDSON, P.E.** DDC ENGINEER  
**DONALD PROPER** DIVISION 5 UTILITIES ENGINEER  
**MONROE BROWN** DIVISION 5 UTILITIES COORDINATOR

### UTILITIES BY OTHERS

ALL PROPOSED UTILITY WORK SHOWN ON THIS SHEET WILL BE DONE BY OTHERS. NO PAYMENT WILL BE MADE TO THE CONTRACTOR FOR PROPOSED UTILITY WORK SHOWN ON THIS SHEET.



**-Y1- Sta. 13+30.36  
BEGIN CONSTRUCTION**  
 -Y1- POT Sta. 14+70.41 =  
 -Y2- POT Sta. 13+73.96  
 -L- POT Sta. 10+00.00 =  
 -Y2- POT Sta. 13+49.47

**-L- Sta. 10+29.73  
BEGIN PROJECT  
EB-4707A**

**-Y2- POT Sta. 15+05.20  
END CONSTRUCTION**

**-Y3- STA 10+72.04  
END CONSTRUCTION**

**-L- STA 18+38.50  
END WIDENING**

**-Y5- Sta. 10+85.37  
END CONSTRUCTION  
END WIDENING**

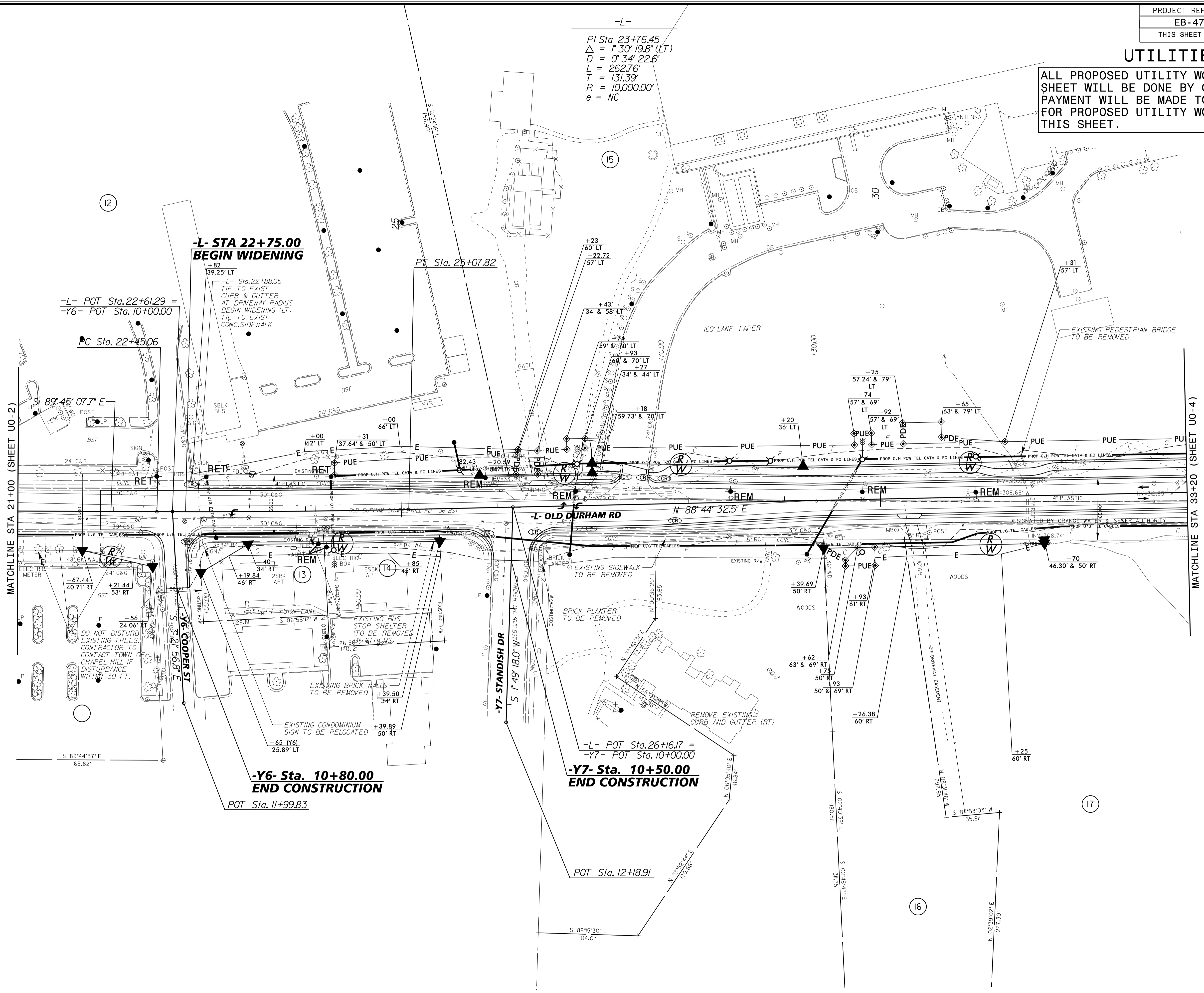
MATCHLINE STA 21+00 (SHEET U0-3)



### UTILITIES BY OTHERS

ALL PROPOSED UTILITY WORK SHOWN ON THIS SHEET WILL BE DONE BY OTHERS. NO PAYMENT WILL BE MADE TO THE CONTRACTOR FOR PROPOSED UTILITY WORK SHOWN ON THIS SHEET.

-L-  
 PI Sta. 23+76.45  
 $\Delta = 1^{\circ} 30' 19.8" (LT)$   
 $D = 0^{\circ} 34' 22.6"$   
 $L = 262.76'$   
 $T = 131.39'$   
 $R = 10,000.00'$   
 $e = NC$



NAD 83/2001

MATCHLINE STA 21+00 (SHEET U0-2)

MATCHLINE STA 33+20 (SHEET U0-4)

**-L- STA 22+75.00  
BEGIN WIDENING**

-L- POT Sta. 22+61.29 =  
-Y6- POT Sta. 10+00.00

PC Sta. 22+45.06

PT Sta. 25+07.82

**-L- OLD DURHAM RD**  
N 88° 44' 32.5" E

**-Y6- Sta. 10+80.00  
END CONSTRUCTION**

POT Sta. 11+99.83

**-Y7- Sta. 10+50.00  
END CONSTRUCTION**

POT Sta. 12+18.91

DO NOT DISTURB  
EXISTING TREES.  
CONTRACTOR TO  
CONTACT TOWN OF  
CHAPEL HILL IF  
DISTURBANCE  
WITHIN 30 FT.

EXISTING CONDOMINIUM  
SIGN TO BE RELOCATED

EXISTING SIDEWALK  
TO BE REMOVED

REMOVE EXISTING  
CURB AND GUTTER (RT)

EXISTING PEDESTRIAN BRIDGE  
TO BE REMOVED

BRICK PLANTER  
TO BE REMOVED

EXISTING BRICK WALLS  
TO BE REMOVED

EXISTING BUS  
STOP SHELTER  
(TO BE REMOVED  
(BY OTHERS))

EXISTING SIDEWALK  
TO BE REMOVED

BRICK PLANTER  
TO BE REMOVED

REMOVE EXISTING  
CURB AND GUTTER (RT)

EXISTING PEDESTRIAN BRIDGE  
TO BE REMOVED

EXISTING SIDEWALK  
TO BE REMOVED

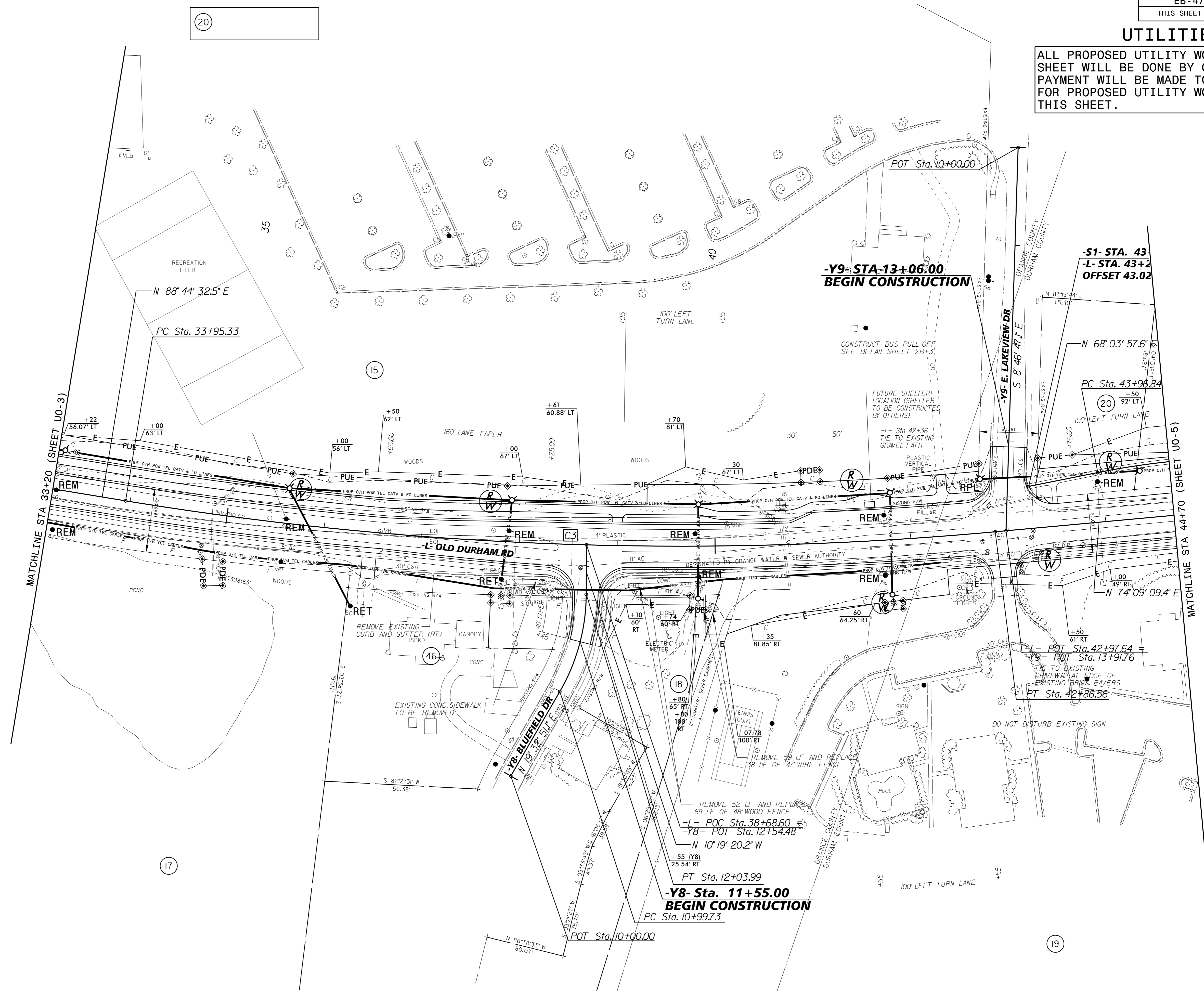
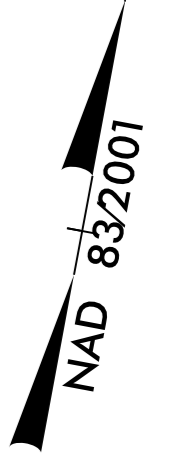
BRICK PLANTER  
TO BE REMOVED

REMOVE EXISTING  
CURB AND GUTTER (RT)

EXISTING PEDESTRIAN BRIDGE  
TO BE REMOVED

### UTILITIES BY OTHERS

ALL PROPOSED UTILITY WORK SHOWN ON THIS SHEET WILL BE DONE BY OTHERS. NO PAYMENT WILL BE MADE TO THE CONTRACTOR FOR PROPOSED UTILITY WORK SHOWN ON THIS SHEET.



20

15

20

46

18

17

19

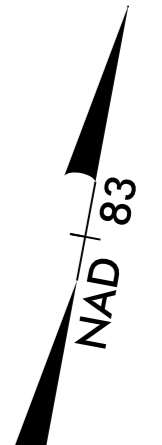
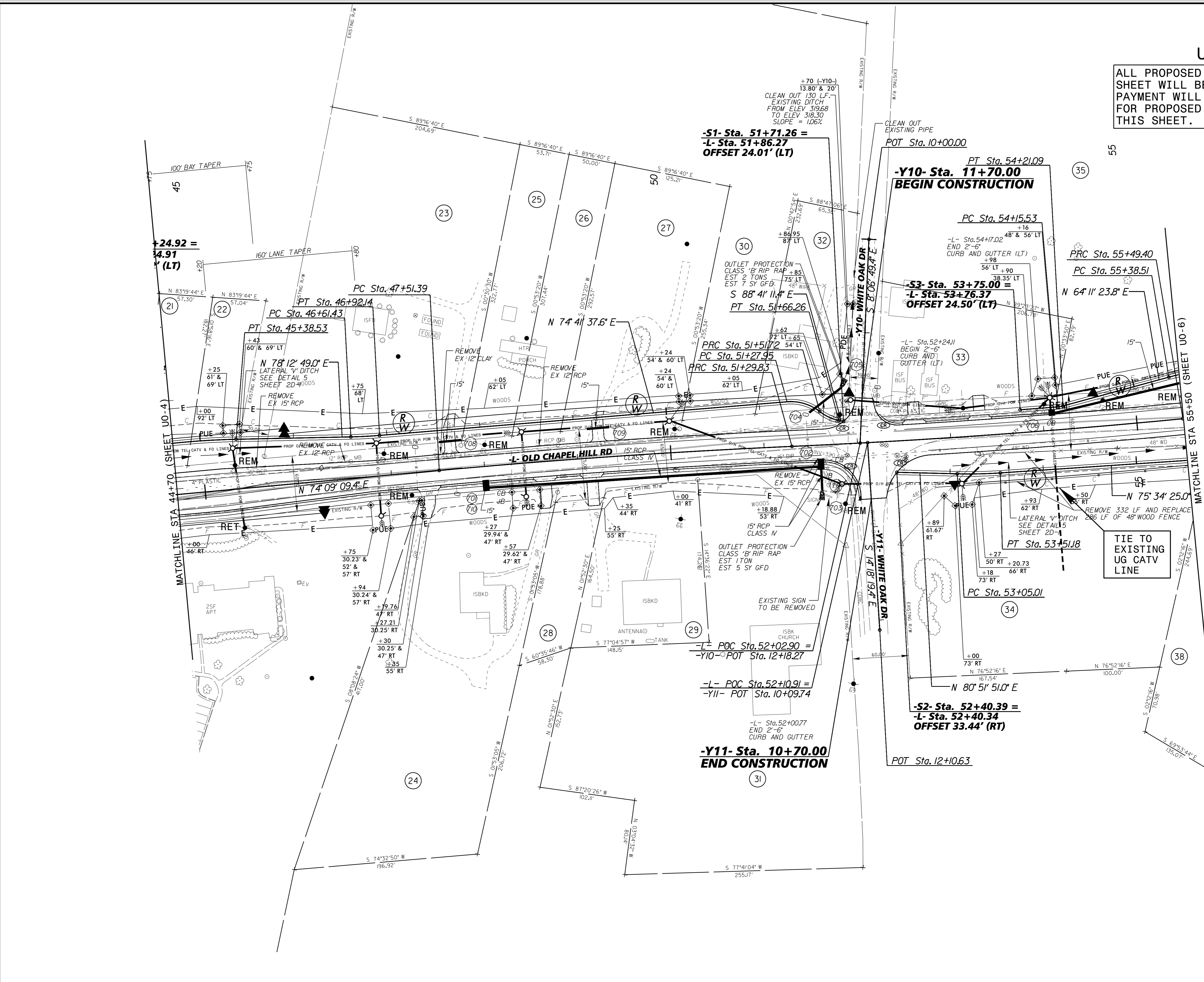
MATCHLINE STA 33+20 (SHEET U0-3)

MATCHLINE STA 44+70 (SHEET U0-5)



### UTILITIES BY OTHERS

ALL PROPOSED UTILITY WORK SHOWN ON THIS SHEET WILL BE DONE BY OTHERS. NO PAYMENT WILL BE MADE TO THE CONTRACTOR FOR PROPOSED UTILITY WORK SHOWN ON THIS SHEET.

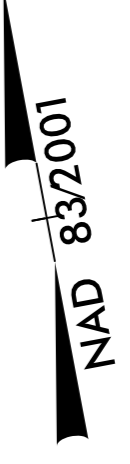
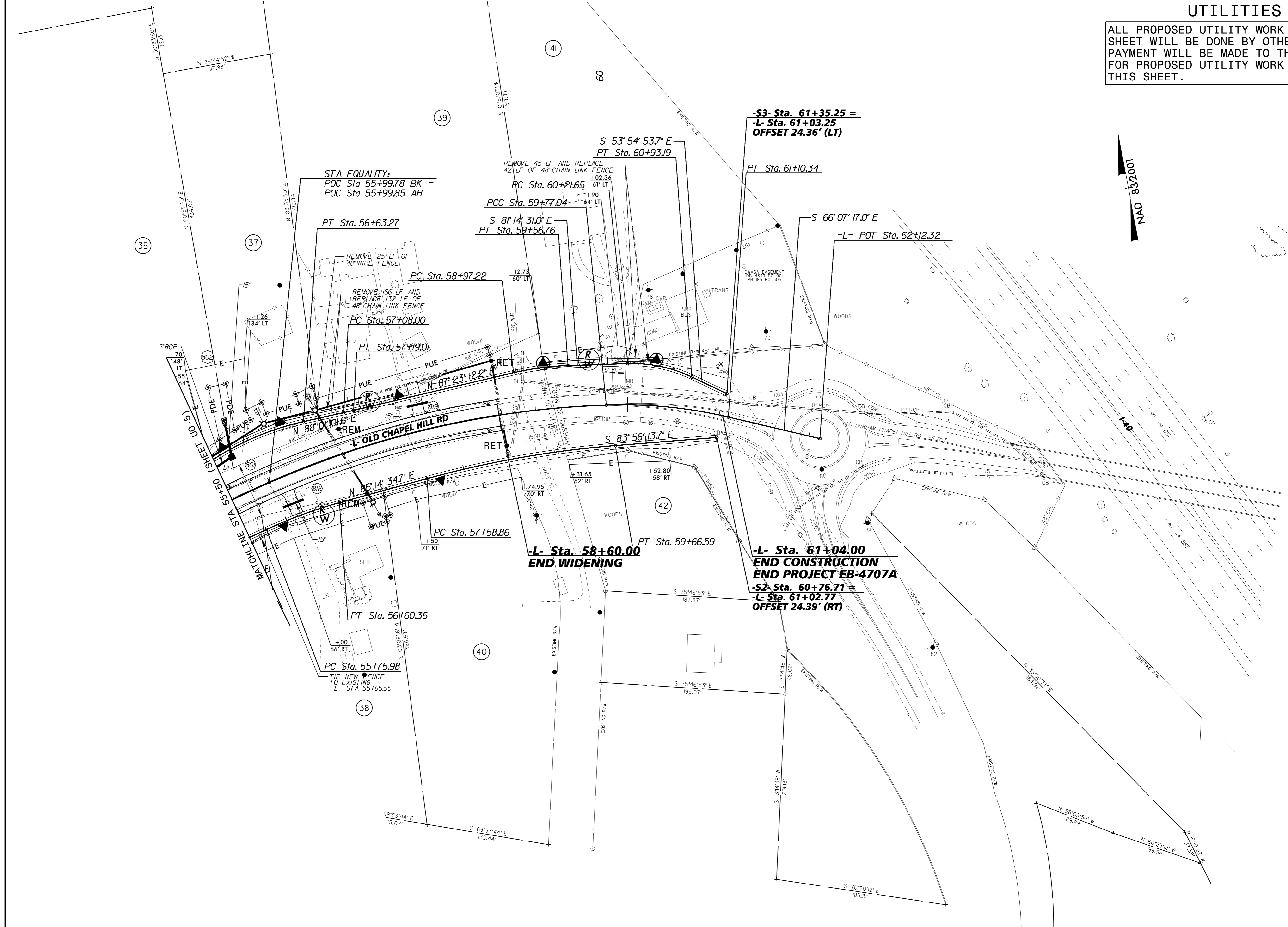


MATCHLINE STA 44+70 (SHEET U0-4)

MATCHLINE STA 55+50 (SHEET U0-6)

### UTILITIES BY OTHERS

ALL PROPOSED UTILITY WORK SHOWN ON THIS SHEET WILL BE DONE BY OTHERS. NO PAYMENT WILL BE MADE TO THE CONTRACTOR FOR PROPOSED UTILITY WORK SHOWN ON THIS SHEET.



**STA EQUALITY:**  
 POC Sta 55+99.78 BK =  
 POC Sta 55+99.85 AH

REMOVE 45 LF AND REPLACE  
 42 LF OF 48" CHAIN LINK FENCE  
 +02.36  
 PC Sta. 60+21.65 61' LT

**-S3- Sta. 61+35.25 =**  
**-L- Sta. 61+03.25**  
**OFFSET 24.36' (LT)**

REMOVE 25' LF OF  
 48" WIRE FENCE  
 PC Sta. 58+97.22

REMOVE 166' LF AND  
 REPLACE 132' LF OF  
 48" CHAIN LINK FENCE  
 PC Sta. 57+08.00

S 81°14'31.0" E  
 PT Sta. 59+56.76

S 66°07'17.0" E

**-L- POT Sta. 62+12.32**

N 88°0'10.6" E  
 REM

S 83°56'13.7" E

**-L- Sta. 58+60.00**  
**END WIDENING**

**-L- Sta. 61+04.00**  
**END CONSTRUCTION**  
**END PROJECT EB-4707A**

**-S2- Sta. 60+76.71 =**  
**-L- Sta. 61+02.77**  
**OFFSET 24.39' (RT)**

PC Sta. 55+75.98  
 TIE NEW FENCE  
 TO EXISTING  
 -L- STA 55+65.55

PT Sta. 56+60.36

S 75°46'53" E  
 187.87'

S 75°46'53" E  
 199.97'

S 17°44'48" W  
 48.02'

S 13°14'48" W  
 200.13'

S 70°50'12" E  
 165.31'

N 58°03'54" W  
 89.69'

N 60°23'12" W  
 99.54'

N 16°02'02" W  
 31.19'

35

37

39

41

60

42

40

38

70  
148'  
LT  
55'  
54'

26  
134' LT

74.95  
70' RT

31.65  
62' RT

52.80  
58' RT

71' RT

66' RT

386.61'

187.87'

199.97'

48.02'

200.13'

165.31'

89.69'

99.54'

31.19'

17.98'

434.09'

410.74'

311.71'

72.13'