

**This electronic collection of documents is provided
for the convenience of the user
and is Not a Certified Document –**

**The documents contained herein were originally issued
and sealed by the individuals whose names and license
numbers appear on each page, on the dates appearing
with their signature on that page.**

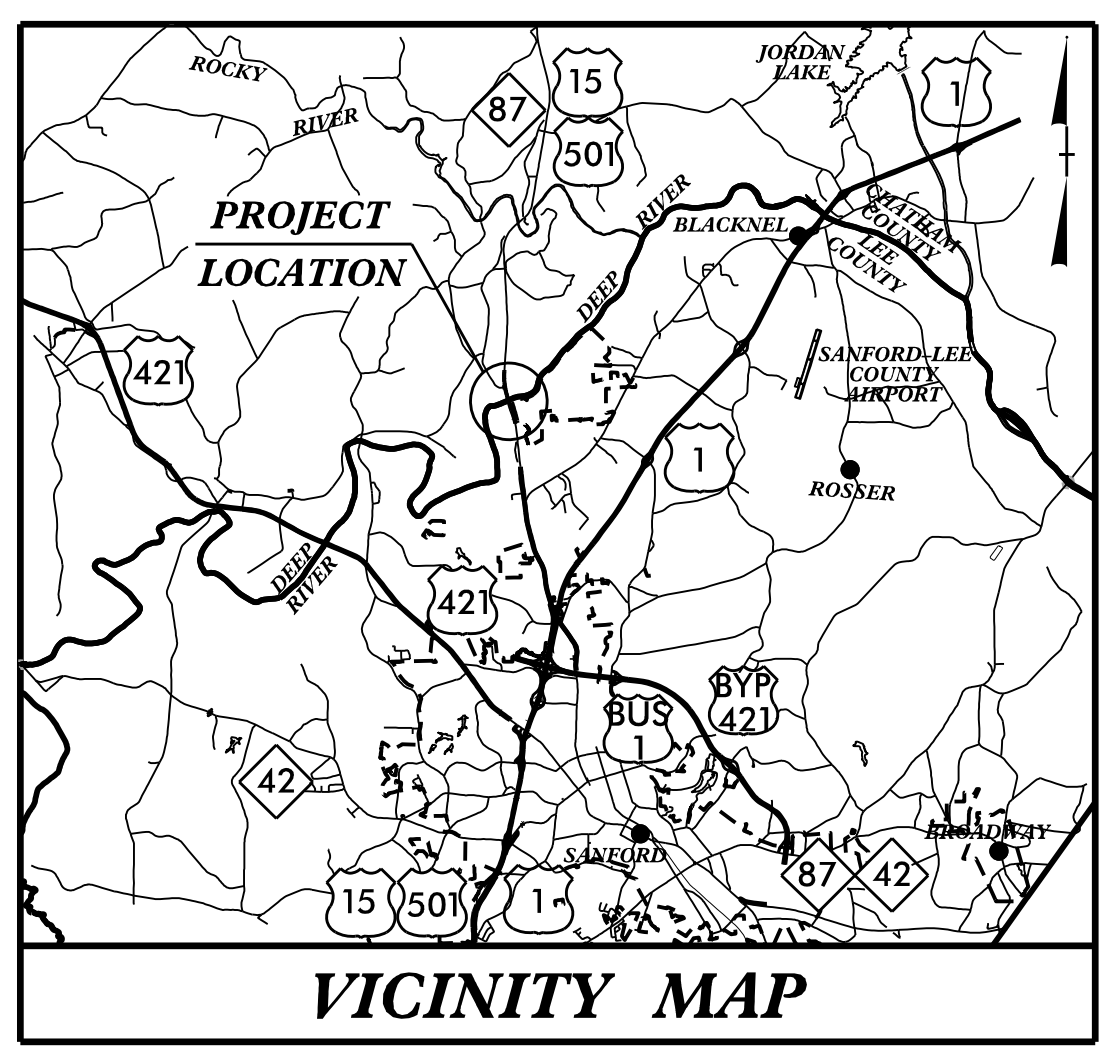
**This file or an individual page
shall not be considered a certified document.**

09.08/99

TIP PROJECT: B-4968

T.I.P. NO.	SHEET NO.
B-4968	UO-1

NOTE:
 ALL UTILITY WORK SHOWN ON THIS SHEET IS DONE BY OTHERS.
 NO PAYMENT WILL BE MADE TO THE CONTRACTOR FOR UTILITY WORK SHOWN ON THIS SHEET.

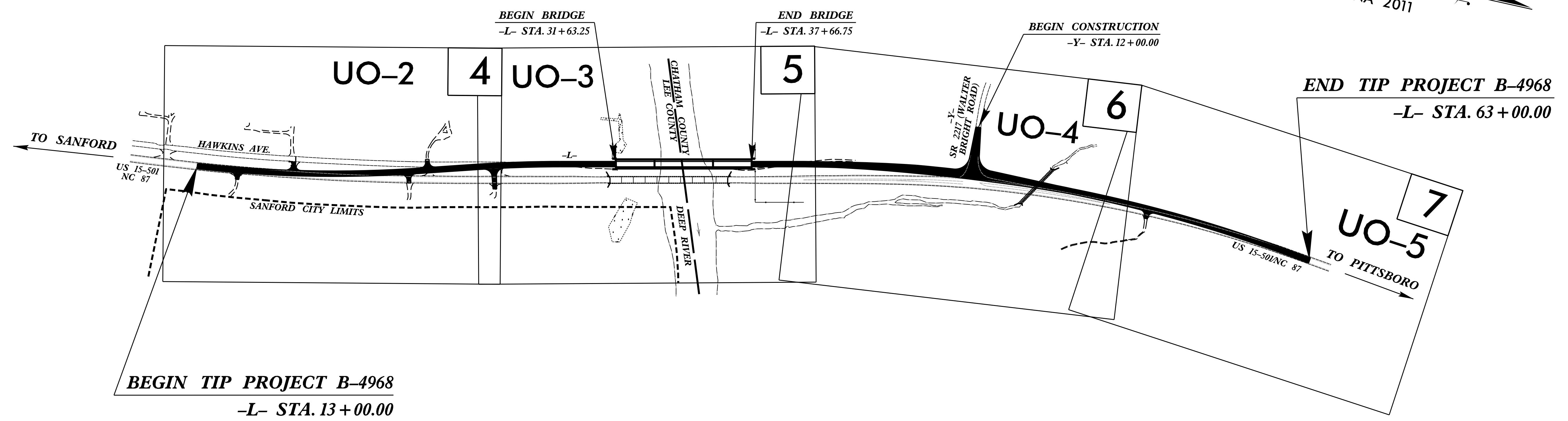
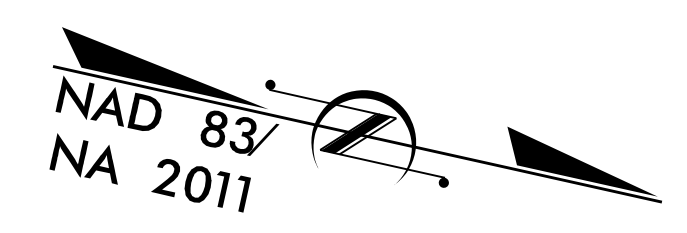


STATE OF NORTH CAROLINA
 DIVISION OF HIGHWAYS

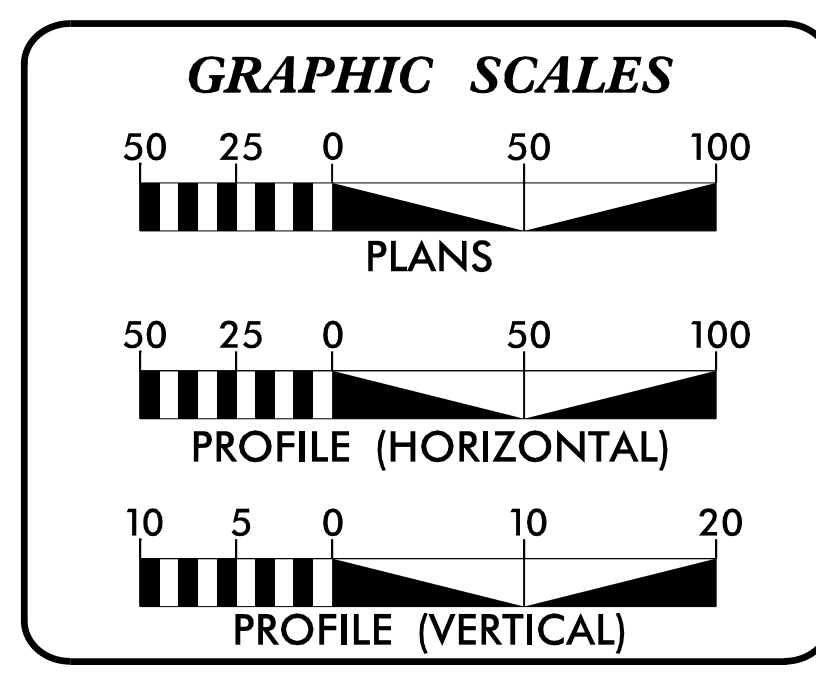
UTILITIES BY OTHERS PLANS LEE & CHATHAM COUNTIES

LOCATION: BRIDGE NO. 10 OVER DEEP RIVER
 ON US 15-501/NC 87

TYPE OF WORK: UTILITIES BY OTHERS



THIS PROJECT IS NOT WITHIN ANY MUNICIPAL BOUNDARIES.



INDEX OF SHEETS

SHEET NO.:	DESCRIPTION:
UO-1	TITLE SHEET
UO-2 THRU UO-5	UBO PLAN SHEETS

- UTILITY OWNERS WITH CONFLICTS**
- (A) CITY OF SANFORD - WATER
 - (B) TOWN OF PITTSBORO - SEWER (PROPOSED)
 - (C) PSNC ENERGY - GAS (DISTRIBUTION)
 - (D) WINDSTREAM - COMMUNICATIONS
 - (E) SPECTRUM - CATV /COMMUNICATIONS

PREPARED IN THE OFFICE OF:

DAVIS • MARTIN • POWELL
 ENGINEERS & SURVEYORS

6415 OLD PLANK RD., HIGH POINT, NC 27265
 PHONE: (336)886-4821 FAX: (336)886-4458
 WWW.DMP-NC.COM LICENSE: F-0245

Andy Larrick, P.E. UTILITY PROJECT MANAGER
 Steve McKee, P.E. PROJECT UTILITY COORDINATOR
 PROJECT UTILITY ENGINEER

**DIVISION OF HIGHWAYS
 UTILITIES UNIT**
 1555 MAIL SERVICES CENTER
 RALEIGH, NC 27699-1555
 PHONE (919) 707-6690
 FAX (919) 250-4151

Tucker Martin, P.E. UTILITIES REGIONAL ENGINEER
 Bernie Bumgarner UTILITIES ENGINEER
 Dayton Martin UTILITIES AREA COORDINATOR
 Tanga Sampson UTILITIES COORDINATOR

\$\$\$ SYSTEM \$\$\$
 \$\$\$ DDN \$\$\$
 \$\$\$ USER NAME \$\$\$

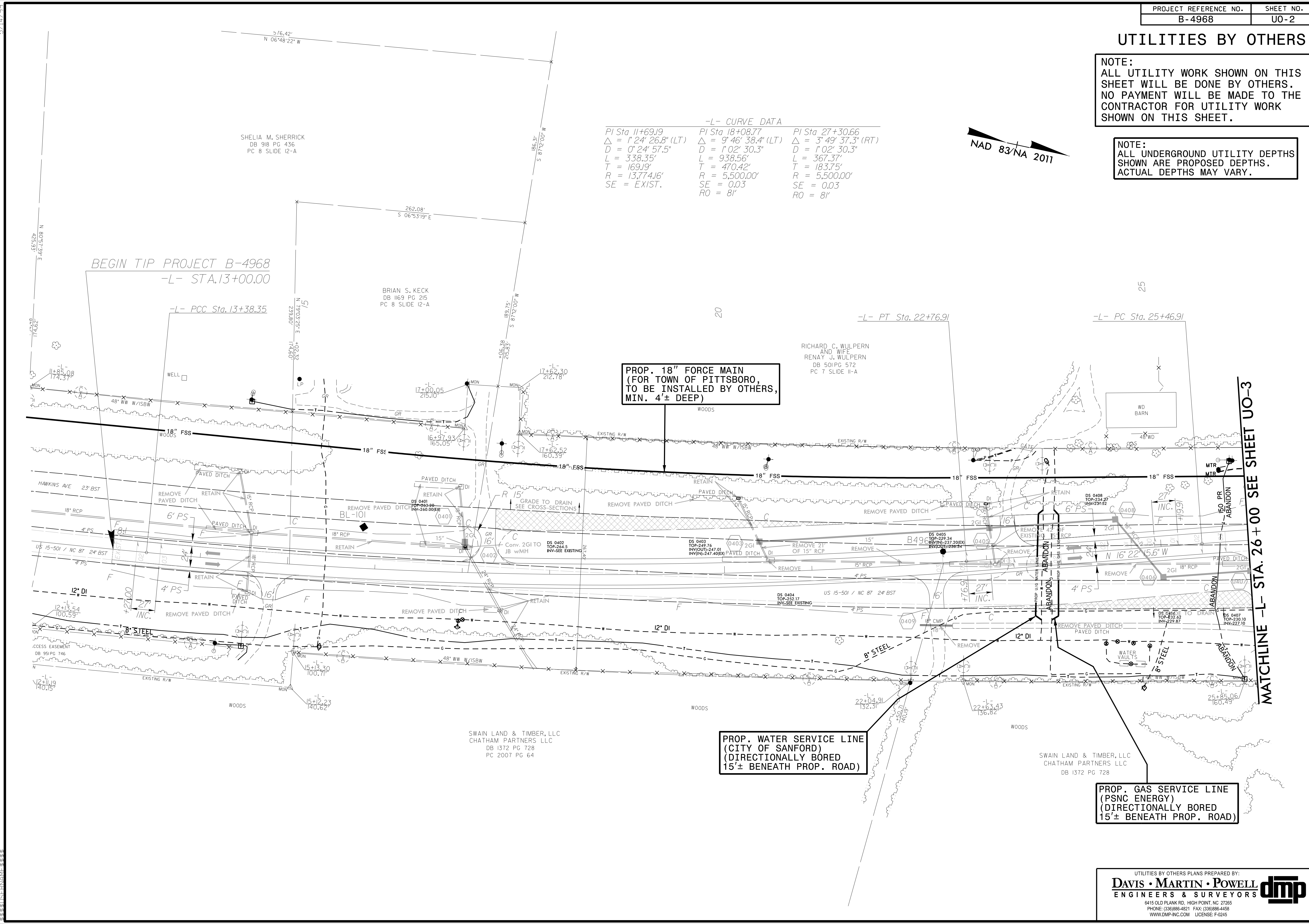
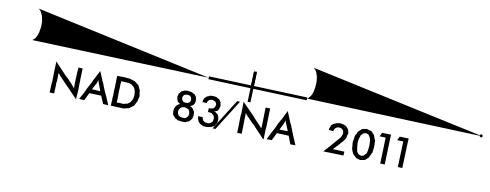
UTILITIES BY OTHERS

NOTE:
ALL UTILITY WORK SHOWN ON THIS SHEET WILL BE DONE BY OTHERS. NO PAYMENT WILL BE MADE TO THE CONTRACTOR FOR UTILITY WORK SHOWN ON THIS SHEET.

NOTE:
ALL UNDERGROUND UTILITY DEPTHS SHOWN ARE PROPOSED DEPTHS. ACTUAL DEPTHS MAY VARY.

-L- CURVE DATA

PI Sta 11+69.19	PI Sta 18+08.77	PI Sta 27+30.66
$\Delta = 1^{\circ} 24' 26.8"$ (LT)	$\Delta = 9^{\circ} 46' 38.4"$ (LT)	$\Delta = 3^{\circ} 49' 37.3"$ (RT)
$D = 0^{\circ} 24' 57.5"$	$D = 1^{\circ} 02' 30.3"$	$D = 1^{\circ} 02' 30.3"$
$L = 338.35'$	$L = 938.56'$	$L = 367.37'$
$T = 169.19'$	$T = 470.42'$	$T = 183.75'$
$R = 13,774.16'$	$R = 5,500.00'$	$R = 5,500.00'$
$SE = EXIST.$	$SE = 0.03$	$SE = 0.03$
	$RO = 8'$	$RO = 8'$



**PROP. 18" FORCE MAIN
(FOR TOWN OF PITTSBORO,
TO BE INSTALLED BY OTHERS,
MIN. 4'± DEEP)**

**PROP. WATER SERVICE LINE
(CITY OF SANFORD)
(DIRECTIONALLY BORED
15'± BENEATH PROP. ROAD)**

**PROP. GAS SERVICE LINE
(PNSC ENERGY)
(DIRECTIONALLY BORED
15'± BENEATH PROP. ROAD)**

MATCHLINE -L- STA. 26 + 00 SEE SHEET UO-3

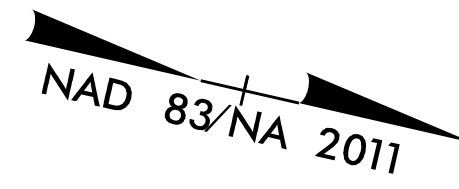
UTILITIES BY OTHERS

NOTE:
ALL UTILITY WORK SHOWN ON THIS SHEET WILL BE DONE BY OTHERS. NO PAYMENT WILL BE MADE TO THE CONTRACTOR FOR UTILITY WORK SHOWN ON THIS SHEET.

NOTE:
ALL UNDERGROUND UTILITY DEPTHS SHOWN ARE PROPOSED DEPTHS. ACTUAL DEPTHS MAY VARY.

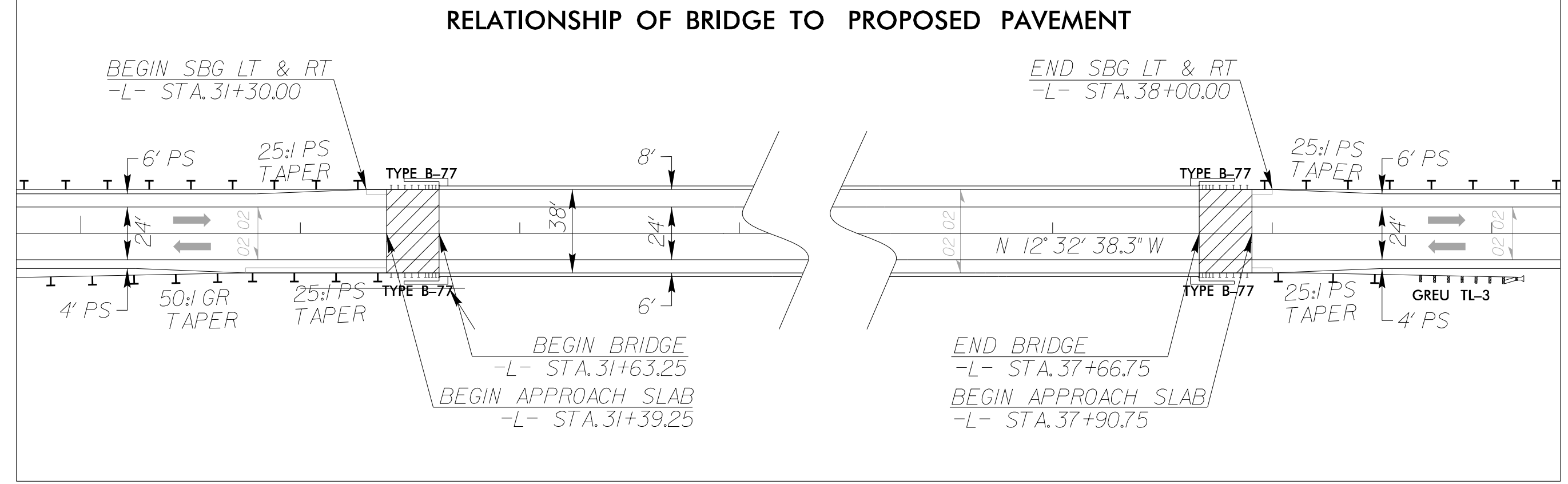
-L- CURVE DATA

PI Sta 27+30.66	PI Sta 50+75.26
$\Delta = 3^{\circ} 49' 37.3" (RT)$	$\Delta = 20^{\circ} 05' 46.5" (RT)$
$D = 1^{\circ} 02' 30.3"$	$D = 0^{\circ} 54' 34.0"$
$L = 367.37'$	$L = 2,209.70'$
$T = 183.75'$	$T = 1,116.32'$
$R = 5,500.00'$	$R = 6,300.00'$
$SE = 0.03$	$SE = 0.03$
$RO = 81'$	$RO = 81'$



TEMPORARY SHORING LOCATIONS

- L- STA. 31+00± TO STA. 31+75±, 25' RT
- L- STA. 31+20± TO STA. 31+70±, 50' RT
- L- STA. 37+55± TO STA. 38+35±, 25' RT
- L- STA. 36+65± TO STA. 37+95±, 50' RT

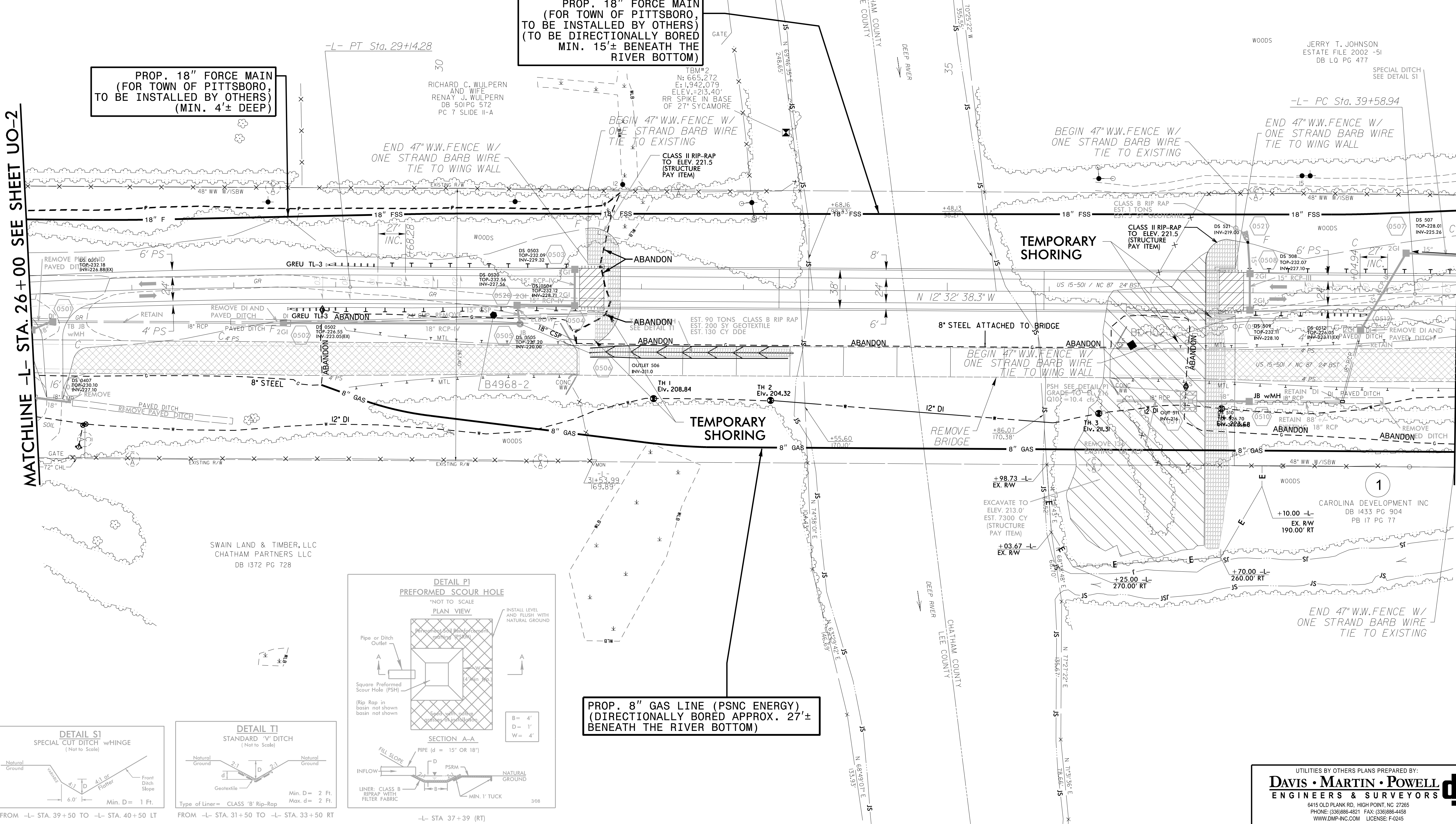


PROP. 18" FORCE MAIN
(FOR TOWN OF PITTSBORO,
TO BE INSTALLED BY OTHERS)
(TO BE DIRECTIONALLY BORED
MIN. 15'± BENEATH THE
RIVER BOTTOM)

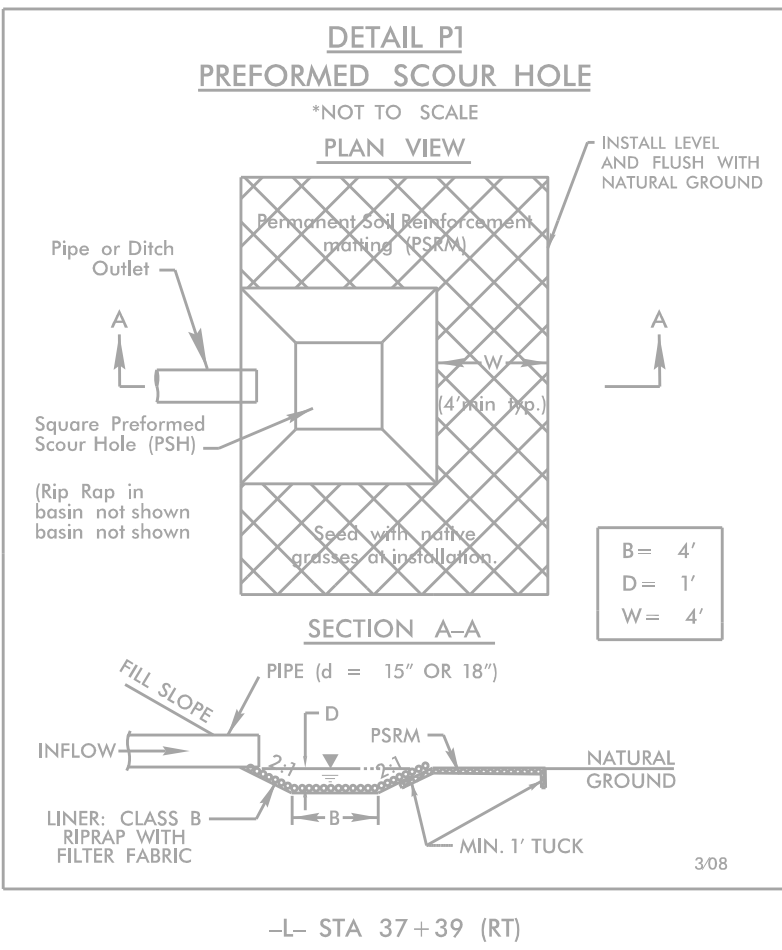
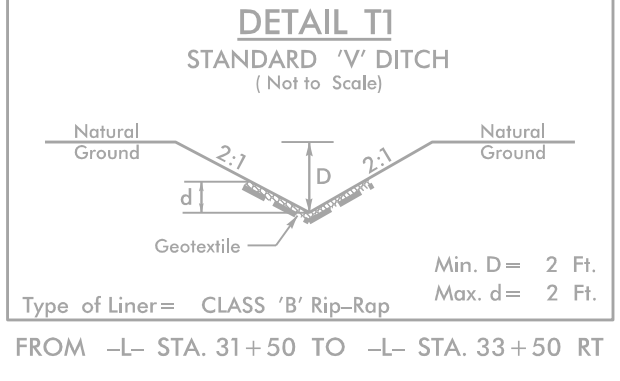
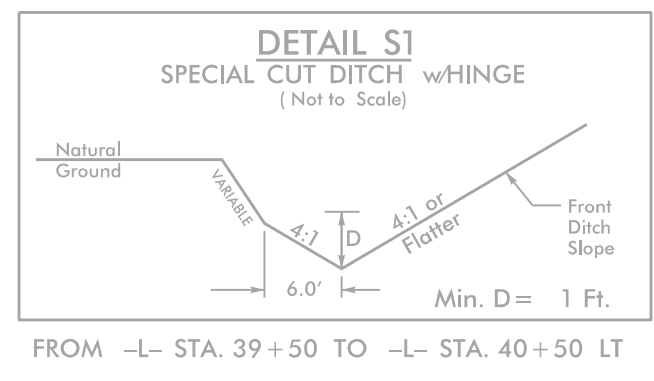
PROP. 18" FORCE MAIN
(FOR TOWN OF PITTSBORO,
TO BE INSTALLED BY OTHERS)
(MIN. 4'± DEEP)

MATCHLINE -L- STA. 26+00 SEE SHEET UO-2

MATCHLINE -L- STA. 40+00 SEE SHEET UO-4



PROP. 8" GAS LINE (PSNC ENERGY)
(DIRECTIONALLY BORED APPROX. 27'±
BENEATH THE RIVER BOTTOM)



UTILITIES BY OTHERS

NOTE:
ALL UTILITY WORK SHOWN ON THIS SHEET WILL BE DONE BY OTHERS. NO PAYMENT WILL BE MADE TO THE CONTRACTOR FOR UTILITY WORK SHOWN ON THIS SHEET.

NOTE:
ALL UNDERGROUND UTILITY DEPTHS SHOWN ARE PROPOSED DEPTHS. ACTUAL DEPTHS MAY VARY.

PROP. BURIED SPECTRUM FO CABLE (DIRECTIONALLY BORED 7'± BELOW CREEK BOTTOM)

PATRICK S. GUNTER
DB 1550 PG 345
PB 2011 PG 177

PROP. BURIED WINDSTREAM TELE. CABLES (3'± DEEP)

NOTE: GAS LINE EXTENSION WAS NOT MARKED BY BII WITNESS POST LOCATED ALONG WOOD SPLIT RAIL FENCE

PROP. BURIED SPECTRUM FO CABLE (3'± DEEP)

PROP. 18" FORCE MAIN (FOR TOWN OF PITTSBORO, TO BE INSTALLED BY OTHERS) (MIN. 4'± DEEP)

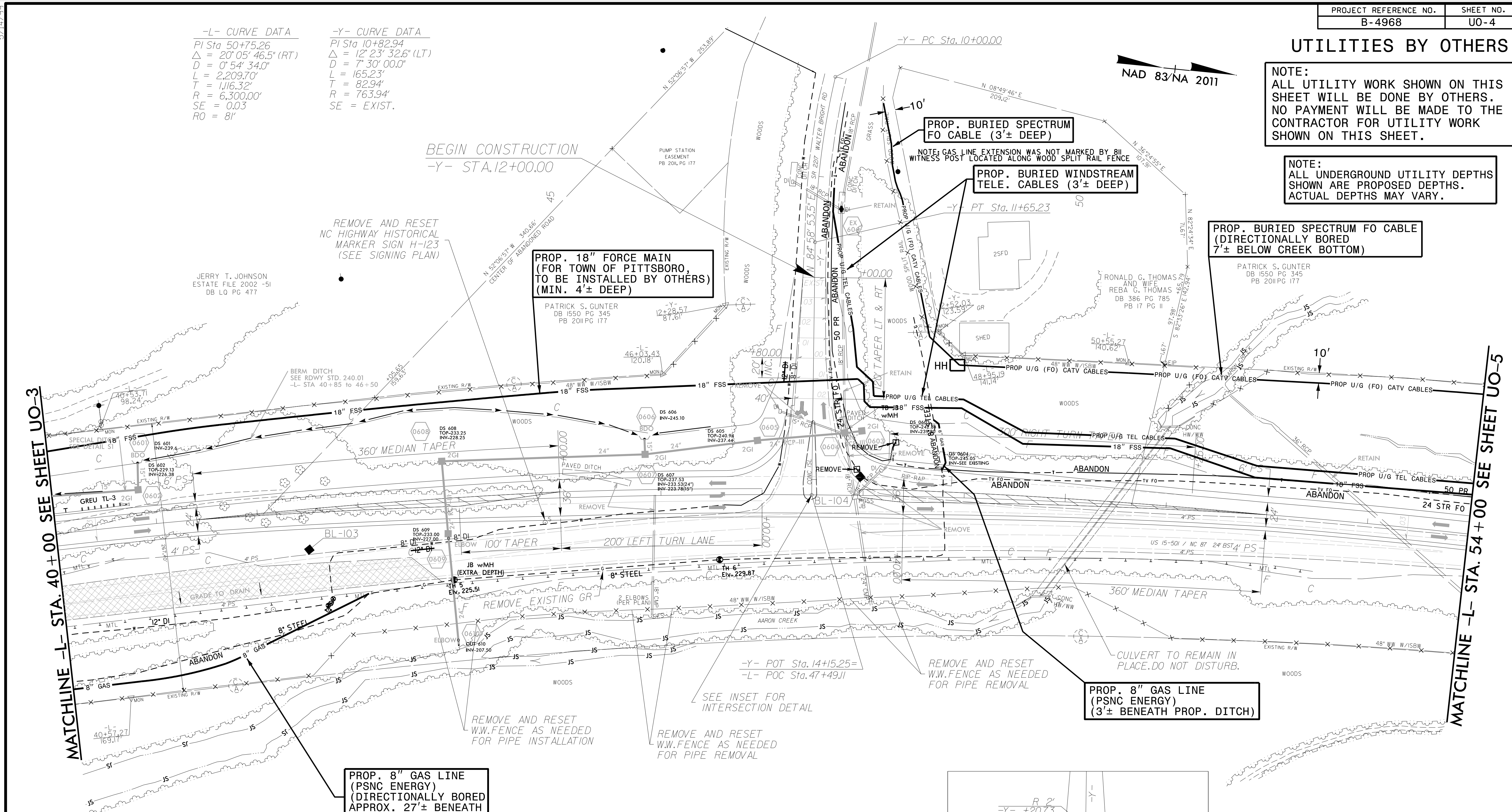
PATRICK S. GUNTER
DB 1550 PG 345
PB 2011 PG 177

REMOVE AND RESET NC HIGHWAY HISTORICAL MARKER SIGN H-123 (SEE SIGNING PLAN)

JERRY T. JOHNSON
ESTATE FILE 2002 -51
DB LO PG 477

BEGIN CONSTRUCTION
-Y- STA. 12+00.00

NAD 83/NA 2011

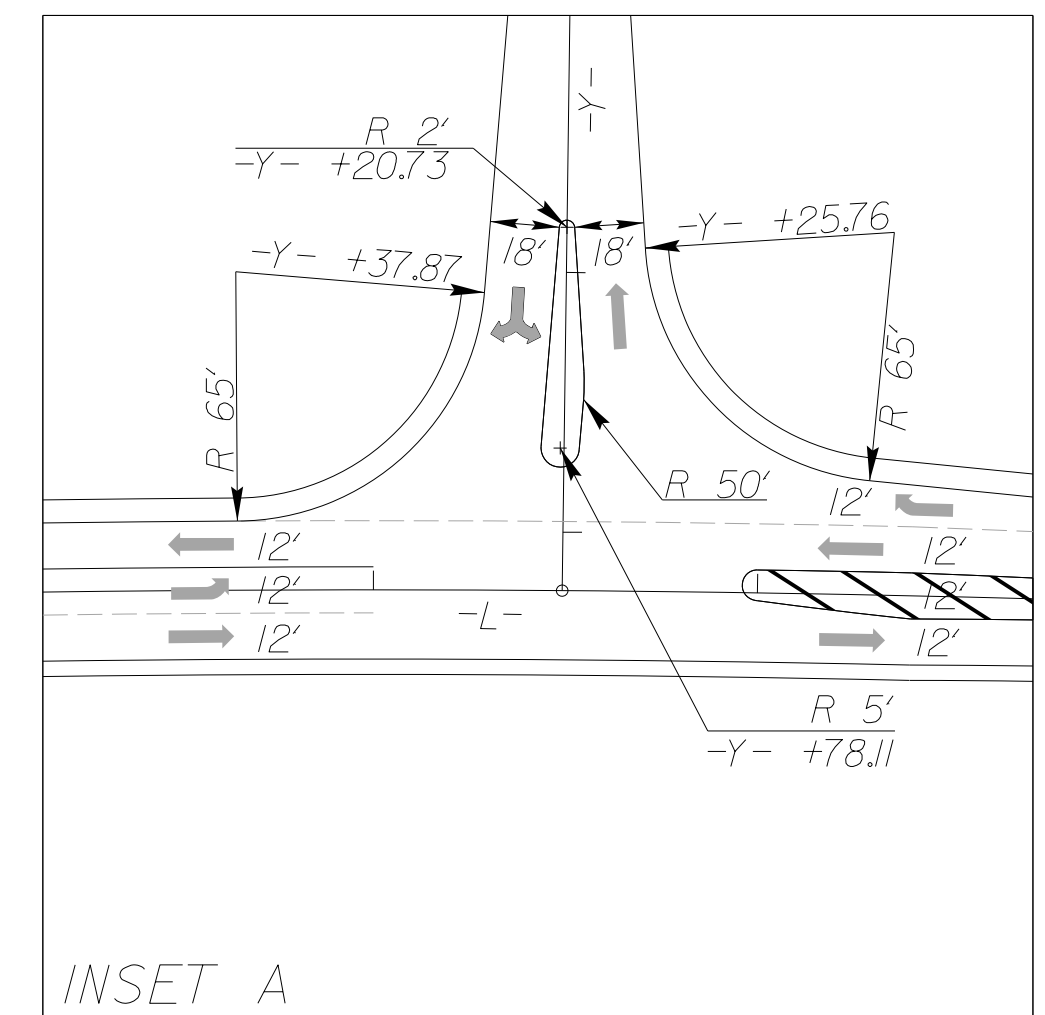


MATCHLINE -L- STA. 40+00 SEE SHEET UO-3

MATCHLINE -L- STA. 54+00 SEE SHEET UO-5

PROP. 8" GAS LINE (PSC ENERGY) (3'± BENEATH PROP. DITCH)

PROP. 8" GAS LINE (PSC ENERGY) (DIRECTIONALLY BORED APPROX. 27'± BENEATH THE RIVER BOTTOM)



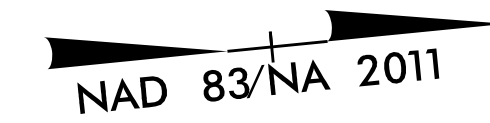
1
CAROLINA DEVELOPMENT INC
DB 1433 PG 904
PB 17 PG 17

UTILITIES BY OTHERS

NOTE:
ALL UTILITY WORK SHOWN ON THIS SHEET WILL BE DONE BY OTHERS. NO PAYMENT WILL BE MADE TO THE CONTRACTOR FOR UTILITY WORK SHOWN ON THIS SHEET.

NOTE:
ALL UNDERGROUND UTILITY DEPTHS SHOWN ARE PROPOSED DEPTHS. ACTUAL DEPTHS MAY VARY.

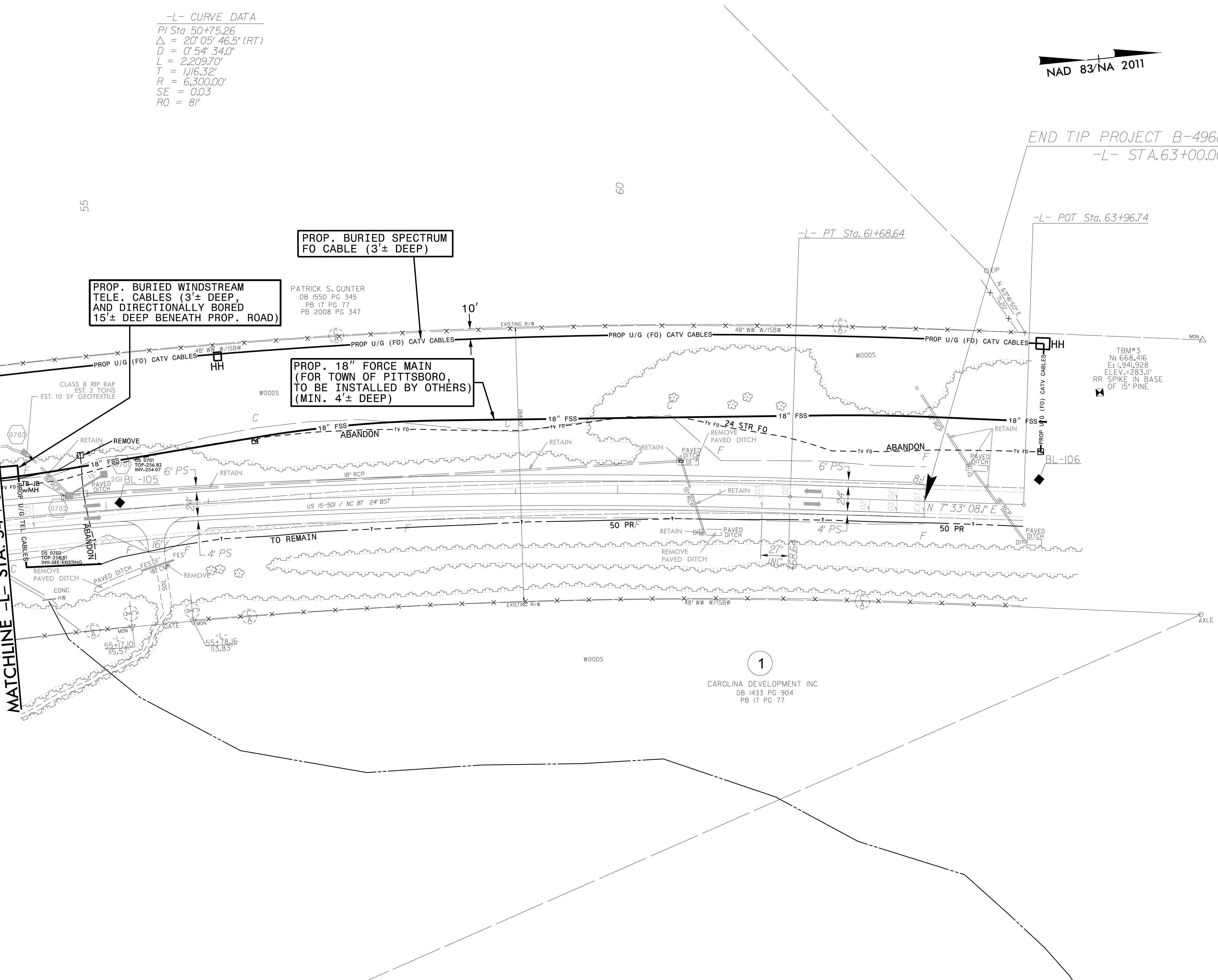
-L- CURVE DATA
 PI Sta 50+75.26
 $\Delta = 20^{\circ}05'46.5''$ (RT)
 D = 0'54'34.0"
 L = 2,209.70'
 T = 1,116.32'
 R = 6,300.00'
 SE = 0.03
 RO = 8'



END TIP PROJECT B-4968
 -L- STA.63+00.00

5/14/99
55
56
57
58
59
60
61
62
63
64
65
66
67
68
69
70
71
72
73
74
75
76
77
78
79
80
81
82
83
84
85
86
87
88
89
90
91
92
93
94
95
96
97
98
99
00

MATCHLINE -L- STA. 54 + 00 SEE SHEET UO-4



PROP. BURIED SPECTRUM FO CABLE (3'± DEEP)

PROP. BURIED WINDSTREAM TELE. CABLES (3'± DEEP, AND DIRECTIONALLY BORED 15'± DEEP BENEATH PROP. ROAD)

PROP. 18" FORCE MAIN (FOR TOWN OF PITTSBORO, TO BE INSTALLED BY OTHERS) (MIN. 4'± DEEP)

PATRICK S. GUNTER
 DB 1550 PG 345
 PB 17 PG 77
 PB 2008 PG 347

1

CAROLINA DEVELOPMENT INC
 DB 1433 PG 904
 PB 17 PG 77