

**This electronic collection of documents is provided  
for the convenience of the user  
and is Not a Certified Document –**

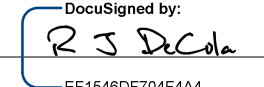
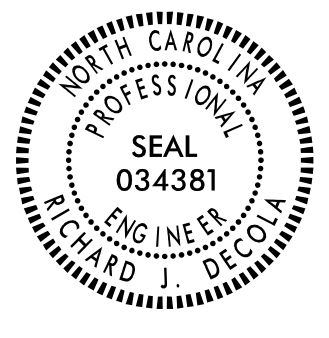
**The documents contained herein were originally issued  
and sealed by the individuals whose names and license  
numbers appear on each page, on the dates appearing  
with their signature on that page.**

**This file or an individual page  
shall not be considered a certified document.**

**STATE OF NORTH CAROLINA  
DEPARTMENT OF TRANSPORTATION**

**SIGNING PLAN  
LEE & CHATHAM COUNTIES**

LOCATION: BRIDGE NO.10 OVER DEEP RIVER ON US 15-501/NC 87

TIP NO. B-4968	SHEET NO. SIGN-1
APPROVED: 	
DATE: 1/23/2019	
SEAL 	
DOCUMENT NOT CONSIDERED FINAL UNLESS ALL SIGNATURES COMPLETED	

**T.I.P.: B-4968**

**CONTRACT: C204179**

**INDEX**

SHEET NO.	DESCRIPTION
SIGN-1	TITLE SHEET
SIGN-2	TYPE "E" & "F" SIGNS & SIGN DESIGNS
SIGN-3-4	EXISTING & PROPOSED SIGNS

**GENERAL NOTES**

- . SIGNS FURNISHED BY STATE
- . CONFIRM IN WRITING AT LEAST 4 MONTHS IN ADVANCE, THE ACTUAL DATE THE DEPARTMENT FURNISHED SIGNS WILL BE REQUIRED.
- . ALL TYPE 'D' SIGNS SHALL BE MOUNTED ON TWO U-CHANNEL POSTS UNLESS OTHERWISE INDICATED ON THE PLANS.
- . IF REMOVAL OR RELOCATION OF SIGNS ON PRIVATE STREET (NON-STATE MAINTAINED) IS REQUIRED DUE TO CONSTRUCTION, THE CONTRACTOR SHALL INFORM THE ENGINEER. THE WORK WILL BE COMPLETED BY OTHERS.
- . WHEN NOT STATIONED OR DIMENSIONED ON PLANS, ALL 'E' AND 'F' SIGNS SHALL BE FIELD LOCATED BY THE ENGINEER
- . ALL EXISTING SIGNS ON "U" CHANNEL POST WITHIN THE PROJECT LIMITS SHALL BE REMOVED AND DISPOSED OF UNLESS OTHERWISE NOTED ON PLANS.
- . WHEN EXISTING SIGNS ARE REMOVED AND INSTALLED ON NEW SUPPORTS, THE RE-ERECTION SHALL IMMEDIATELY FOLLOW THE REMOVAL.
- . THE BACKGROUND FOR TYPE E & F SIGNS SHALL BE TYPE C REFLECTIVE SHEETING.
- . SEE ROADWAY PLANS FOR GUARD/GUIDE RAIL DETAILS.

**SUMMARY OF QUANTITIES**

ITEM NO.	DESC. NO.	SECT. NO.	ITEM DESCRIPTION	QUANTITY	UNIT
4072000000	903		SUPPORTS, 3 LB STEEL U-CHANNEL	172	L.F.
4096000000	904		SIGN ERECTION, TYPE D	4	EA.
4102000000	904		SIGN ERECTION, TYPE E	5	EA.
4108000000	904		SIGN ERECTION, TYPE F	2	EA.
4116100000	904		SIGN ERECTION, RELOCATE SIGN TYPE D	1	EA.
4155000000	907		DISPOSAL OF SIGN SYSTEM, U-CHANNEL	8	EA.
4192000000	907		DISPOSAL OF SUPPORT, U-CHANNEL	1	EA.

**ROADWAY STANDARD DRAWING**

THE FOLLOWING ROADWAY STANDARDS AS APPEAR IN "ROADWAY STANDARD DRAWINGS" - PROJECT SERVICES UNIT - N.C. DEPARTMENT OF TRANSPORTATION - RALEIGH, N.C., DATED JANUARY 2018 ARE APPLICABLE TO THIS PROJECT AND BY REFERENCE HEREBY ARE CONSIDERED A PART OF THESE PLANS:

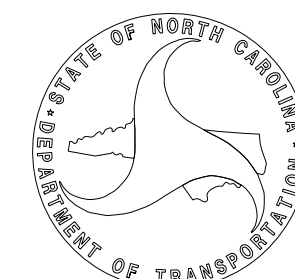
STD. NO.	TITLE
901.50	ARROWS AND SHIELDS
904.10	ORIENTATION OF GROUND MOUNTED SIGNS
904.50	MOUNTING OF TYPE 'D', 'E' AND 'F' SIGNS ON 'U' CHANNEL POSTS

**PROJECT NOTES**

- A CONTRACTOR SHALL CONTACT DIVISION TRAFFIC SERVICES AND SCHEDULE TO HAVE DIVISION FORCES TO REMOVE HISTORIC MARKER SIGN.
- B CONTRACTOR SHALL CONTACT DIVISION TRAFFIC SERVICES AND SCHEDULE TO HAVE DIVISION FORCES TO ERECT HISTORIC MARKER SIGN.

**PLAN REVIEWED BY: NCDOT SIGNING AND DELINEATION UNIT**

**MATT SPRINGER, PE** SIGNING & DELINEATION STANDARDS ENGINEER  
**AYMAN I. ALQUDWAH, PE** SIGNING & DELINEATION REGIONAL ENGINEER



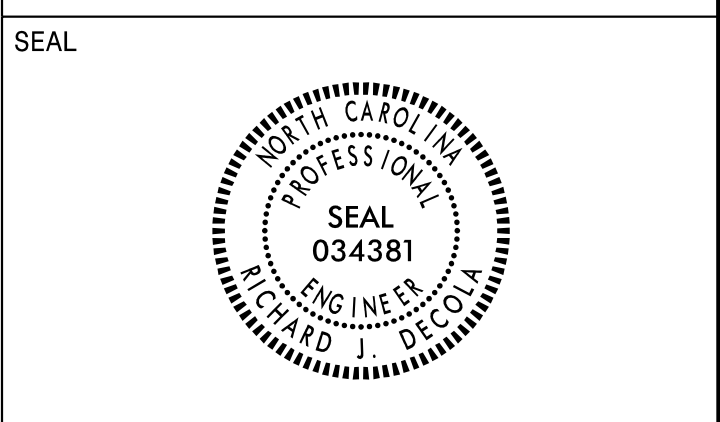
**PLAN PREPARED FOR NCDOT BY:**

**RICK DECOLA, PE** PROJECT MANAGER  
**DEB WEAVER, PE** SENIOR TRAFFIC ENGINEER

**Mead&Hunt**

111 E. Hargett Street, Suite 300  
 Raleigh, North Carolina 27601  
 919-714-8670 | mead&hunt.com  
 NC License No. F-1235

APPROVED: *R J Decola*  
DATE: 1/4/2019



DOCUMENT NOT CONSIDERED FINAL  
UNLESS ALL SIGNATURES COMPLETED

Mead & Hunt  
111 E. Hargett Street, Suite 300  
Raleigh, North Carolina 27601  
919-714-8670 | meadandhunt.com  
NC License No. F-1235

SIGN NUMBER: 301      BACKG COLOR: Green  
TYPE: D      COPY COLOR: White  
QUANTITY: 1

SYMBOL	X	Y	WID	HT

SIGN WIDTH: 5'-6"  
HEIGHT: 3'-0"  
TOTAL AREA: 16.5 Sq.Ft.

BORDER TYPE: FLUSH  
RECESS: 0"  
WIDTH: 0.75"  
RADII: 6"

NO. Z BARS:  
LENGTH:

MAT'L: 0.125" (3.2 mm) ALUMINUM

DESIGN BY: S. SANGHANI      CHECKED BY: R. J. DECOLA      Sep 16, 2018  
PROJECT ID: B-4968      LOCATION: US 15-501/ NC 87      DIV: 8

BORDER R=6" TH=0.75"

USE NOTES: 1,2  
1. Legend and border(except those that are colored black) shall be direct applied Grade C sheeting.  
2. Background shall be Grade C reflective sheeting.

Spacing Factor is 1 unless specified otherwise

LETTER POSITIONS

Letter locations are panel edge to lower left corner													Series/Size	Text Length
W	E	L	C	O	M	E	T	O					C 2000	22.1
22	24.7	26.7	28.6	30.8	33.2	35.8	37.4	40.4	42.3					
C	H	A	T	H	A	M	C	O					D 2000	51.7
7.2	12.6	17.6	23	27.6	32.6	38.6	43.3	49.3	54.6					
L	E	A	V	I	N	G							C 2000	13.2
26.4	28.4	30.2	32.3	34.5	35.6	37.9								
L	E	E	C	O									D 2000	28.6
18.7	23.3	28.1	31.8	37.8	43.1									

FILENAME: B4968\_Sgn\_SGN\_3      NORTH CAROLINA D.O.T. SIGN DETAIL

SIGN NUMBER: 303      BACKG COLOR: Green  
TYPE: D      COPY COLOR: White  
QUANTITY: 2

SYMBOL	X	Y	WID	HT

SIGN WIDTH: 4'-6"  
HEIGHT: 1'-6"  
TOTAL AREA: 6.0 Sq.Ft.

BORDER TYPE: FLUSH  
RECESS: 0"  
WIDTH: 0.75"  
RADII: 1.5"

NO. Z BARS:  
LENGTH:

MAT'L: 0.125" (3.2 mm) ALUMINUM

DESIGN BY: S. SANGHANI      CHECKED BY: R. J. DECOLA      Sep 16, 2018  
PROJECT ID: B-4968      LOCATION: US 15-501/ NC 87      DIV: 8

BORDER R=1.5" TH=0.75"

Panel Style: county line.ssi  
M.U.T.C.D.: 2009 Edition

MOUNT BELOW SIGNS 301 AND 302

USE NOTES: 1,2  
1. Legend and border(except those that are colored black) shall be direct applied Grade C sheeting.  
2. Background shall be Grade C reflective sheeting.

Spacing Factor is 1 unless specified otherwise

LETTER POSITIONS

Letter locations are panel edge to lower left corner													Series/Size	Text Length
D	E	E	P	R	I	V	E	R					D 2000	38.5
4.7	9.2	13.2	17.1	20.5	25.5	29.8	31.3	35.9	39.8					

FILENAME: B4968\_Sgn\_SGN\_3      NORTH CAROLINA D.O.T. SIGN DETAIL

SIGN NUMBER: 302      BACKG COLOR: Green  
TYPE: D      COPY COLOR: White  
QUANTITY: 1

SYMBOL	X	Y	WID	HT

SIGN WIDTH: 5'-6"  
HEIGHT: 3'-0"  
TOTAL AREA: 16.5 Sq.Ft.

BORDER TYPE: FLUSH  
RECESS: 0"  
WIDTH: 0.75"  
RADII: 6"

NO. Z BARS:  
LENGTH:

MAT'L: 0.125" (3.2 mm) ALUMINUM

DESIGN BY: S. SANGHANI      CHECKED BY: R. J. DECOLA      Sep 16, 2018  
PROJECT ID: B-4968      LOCATION: US 15-501/ NC 87      DIV: 8

BORDER R=6" TH=0.75"

USE NOTES: 1,2  
1. Legend and border(except those that are colored black) shall be direct applied Grade C sheeting.  
2. Background shall be Grade C reflective sheeting.

Spacing Factor is 1 unless specified otherwise

LETTER POSITIONS

Letter locations are panel edge to lower left corner													Series/Size	Text Length
W	E	L	C	O	M	E	T	O					C 2000	22.1
22	24.7	26.7	28.6	30.8	33.2	35.8	37.4	40.4	42.3					
L	E	E	C	O									D 2000	28.6
18.7	23.3	28.1	31.8	37.8	43.1									
L	E	A	V	I	N	G							C 2000	13.2
26.4	28.4	30.2	32.3	34.5	35.6	37.9								
C	H	A	T	H	A	M	C	O					D 2000	51.7
7.2	12.6	17.6	23	27.6	32.6	38.6	43.3	49.3	54.6					

FILENAME: B4968\_Sgn\_SGN\_3      NORTH CAROLINA D.O.T. SIGN DETAIL

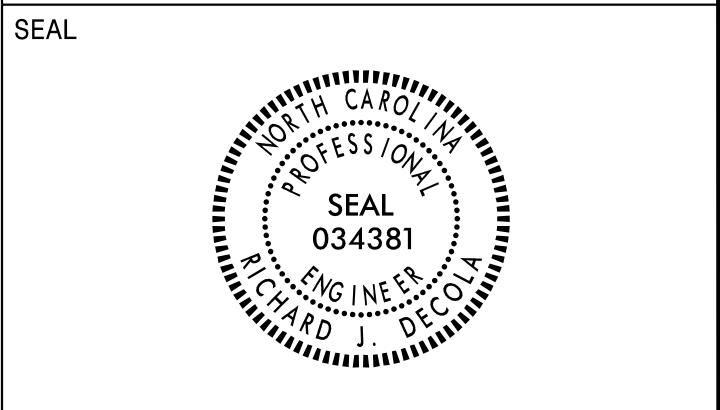
<p>401 QUANTITY REQ'D 1</p> <p>36" X 36" R1-1</p> <p>TWO "U" POST PER SIGN</p>	<p>402 QUANTITY REQ'D 1</p> <p>24" X 30" R4-7</p> <p>ONE "U" POST PER SIGN</p>	<p>403 QUANTITY REQ'D 1</p> <p>18" X 18" OM1-3</p> <p>MOUNT BELOW SIGN 402 IN 1 INSTALLATION</p>
<p>501 QUANTITY REQ'D 1</p> <p>24" X 12" M3-3 24" X 24" M1-4 30" X 24" M1-4 24" X 24" M1-5</p> <p>ONE "U" POST PER SIGN</p>	<p>502 QUANTITY REQ'D 1</p> <p>24" X 12" M3-1 24" X 24" M1-4 30" X 24" M1-4 24" X 24" M1-5</p> <p>ONE "U" POST PER SIGN</p>	<p>404 QUANTITY REQ'D 3</p> <p>18" X 18" OM4-3</p> <p>MOUNT AT END OF ROADWAY IN 1 INSTALLATION</p>

TYPE "E" & "F" SIGNS  
& SIGN DESIGNS

I:\3018\X:\4306200\170752.01\TECH\Traffic\Signing\CADD\Signing Plans\B4968\_Sgn\_SGN\_2.dgn  
User:1784rjd



APPROVED: *R. J. Decker*  
DocuSigned by:  
EF1548D5794F444  
DATE: 1/23/2019

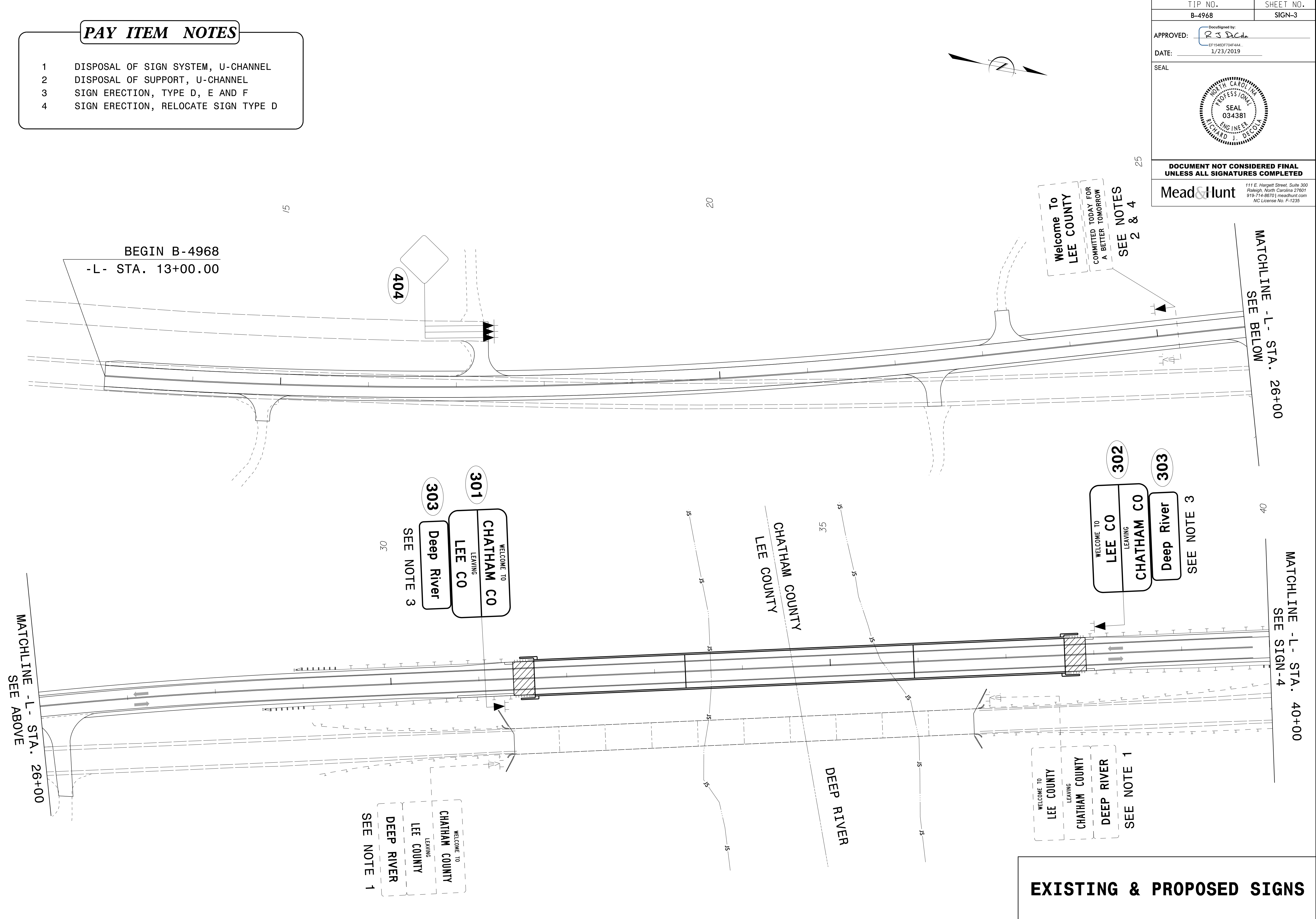


DOCUMENT NOT CONSIDERED FINAL  
UNLESS ALL SIGNATURES COMPLETED

Mead & Hunt  
111 E. Hargett Street, Suite 300  
Raleigh, North Carolina 27601  
919-714-8670 | meadhunt.com  
NC License No. F-1235

**PAY ITEM NOTES**

- 1 DISPOSAL OF SIGN SYSTEM, U-CHANNEL
- 2 DISPOSAL OF SUPPORT, U-CHANNEL
- 3 SIGN ERECTION, TYPE D, E AND F
- 4 SIGN ERECTION, RELOCATE SIGN TYPE D



BEGIN B-4968  
-L- STA. 13+00.00

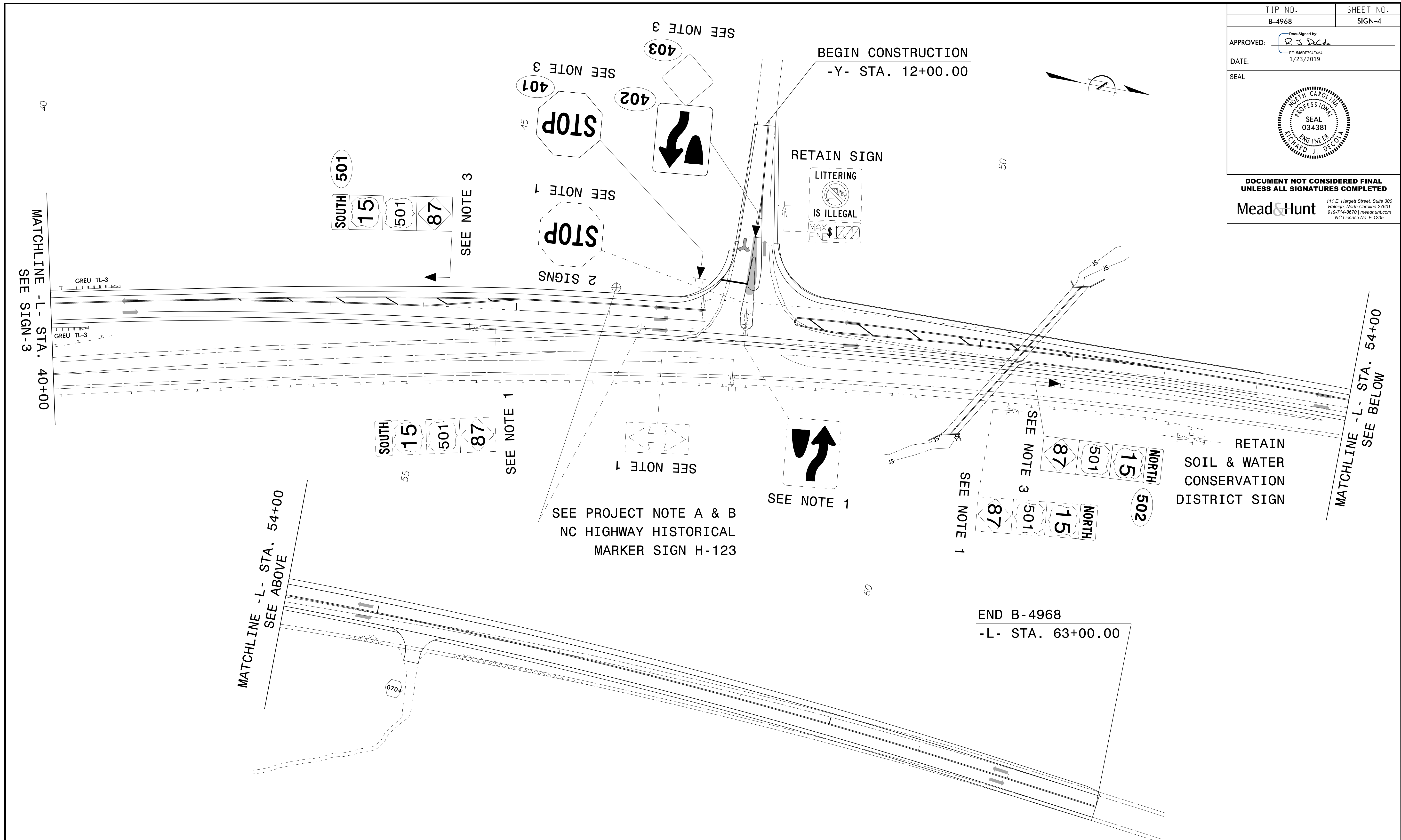
MATCHLINE -L- STA. 26+00  
SEE ABOVE

MATCHLINE -L- STA. 26+00  
SEE BELOW

MATCHLINE -L- STA. 40+00  
SEE SIGN -4

**EXISTING & PROPOSED SIGNS**

TIP NO. B-4968	SHEET NO. SIGN-4
APPROVED: <i>R S DeCh...</i>	
DATE: 1/23/2019	
SEAL	
<b>DOCUMENT NOT CONSIDERED FINAL UNLESS ALL SIGNATURES COMPLETED</b>	
<b>Mead &amp; Hunt</b> <small>111 E. Hargett Street, Suite 300 Raleigh, North Carolina 27601 919-714-8670   meadhunt.com NC License No. F-1235</small>	



**PAY ITEM NOTES**

- 1 DISPOSAL OF SIGN SYSTEM, U-CHANNEL
- 2 DISPOSAL OF SUPPORT, U-CHANNEL
- 3 SIGN ERECTION, TYPE D, E AND F
- 4 SIGN ERECTION, RELOCATE SIGN TYPE D

**EXISTING & PROPOSED SIGNS**

01/23/19  
 X:\4306200\170752.01\TECH\Traffic\Signing\CADD\Signing\_Plans\B4968\_Sgn\_SGN\_4.dgn  
 User: r784rjd