

**This electronic collection of documents is provided
for the convenience of the user
and is Not a Certified Document –**

**The documents contained herein were originally issued
and sealed by the individuals whose names and license
numbers appear on each page, on the dates appearing
with their signature on that page.**

**This file or an individual page
shall not be considered a certified document.**

TIP PROJECT: B-4968

STATE OF NORTH CAROLINA
DIVISION OF HIGHWAYS
PLAN FOR PROPOSED
HIGHWAY EROSION CONTROL

LEE & CHATHAM COUNTIES

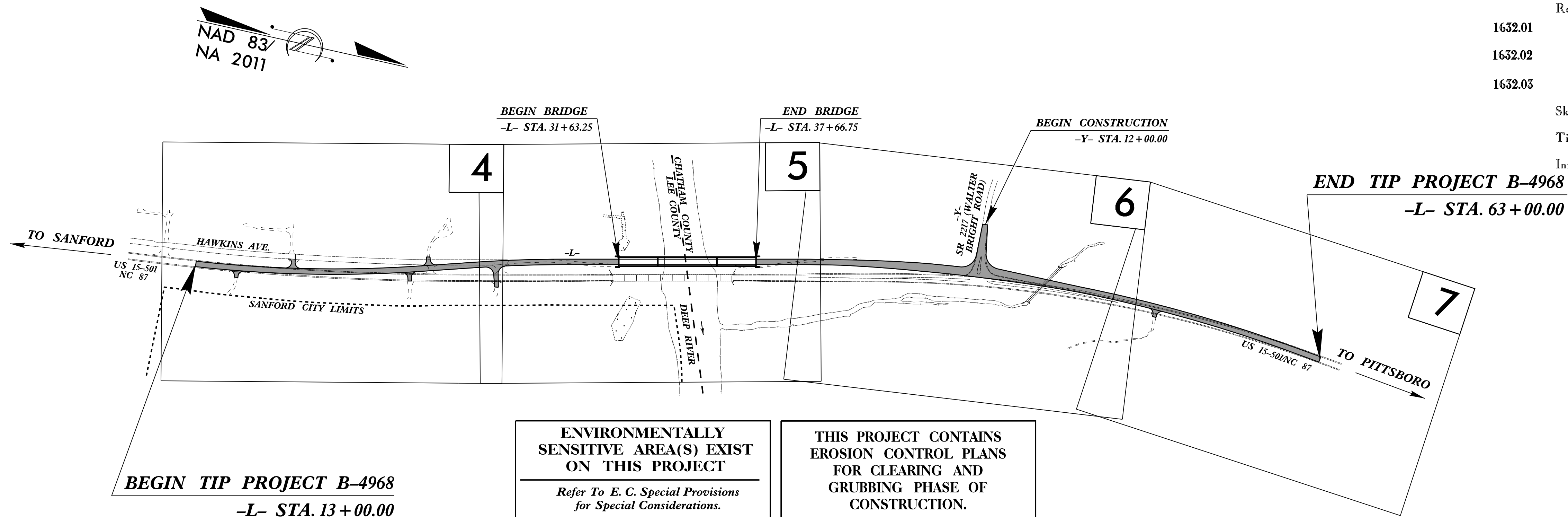
LOCATION: BRIDGE NO. 10 OVER DEEP RIVER
ON US 15-50/NC 87

TYPE OF WORK: GRADING, DRAINAGE, PAVING AND STRUCTURE

STATE	STATE PROJECT REFERENCE NO.	SHEET NO.	TOTAL SHEETS
N.C.	B-4968	EC-1	
STATE PROJ. NO.	F.A. PROJ. NO.	DESCRIPTION	

EROSION AND SEDIMENT CONTROL MEASURES

Std. #	Description	Symbol
1630.03	Temporary Silt Ditch	
1630.05	Temporary Diversion	
1605.01	Temporary Silt Fence	
1606.01	Special Sediment Control Fence	
1622.01	Temporary Berms and Slope Drains	
1630.02	Silt Basin Type B	
1633.01	Temporary Rock Silt Check Type-A	
	Temporary Rock Silt Check Type-A with Matting and Polyacrylamide (PAM)	
1633.02	Temporary Rock Silt Check Type-B	
	Wattle / Coir Fiber Wattle	
	Wattle / Coir Fiber Wattle with Polyacrylamide (PAM)	
1634.01	Temporary Rock Sediment Dam Type-A	
1634.02	Temporary Rock Sediment Dam Type-B	
1635.01	Rock Pipe Inlet Sediment Trap Type-A	
1635.02	Rock Pipe Inlet Sediment Trap Type-B	
1630.04	Stilling Basin	
1630.06	Special Stilling Basin	
	Rock Inlet Sediment Trap:	
1632.01	Type A	
1632.02	Type B	
1632.03	Type C	
	Skimmer Basin	
	Tiered Skimmer Basin	
	Infiltration Basin	



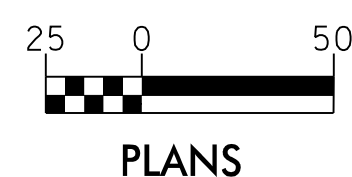
BEGIN TIP PROJECT B-4968
-L- STA. 13+00.00

ENVIRONMENTALLY SENSITIVE AREA(S) EXIST ON THIS PROJECT
Refer To E. C. Special Provisions for Special Considerations.

THIS PROJECT CONTAINS EROSION CONTROL PLANS FOR CLEARING AND GRUBBING PHASE OF CONSTRUCTION.

THIS PROJECT HAS BEEN DESIGNED TO SENSITIVE WATERSHED STANDARDS.

GRAPHIC SCALE



PLANS

THESE EROSION AND SEDIMENT CONTROL PLANS COMPLY WITH THE REGULATIONS SET FORTH BY THE NCG-010000 GENERAL CONSTRUCTION PERMIT EFFECTIVE AUGUST 1, 2016 AND ISSUED BY THE NORTH CAROLINA DEPARTMENT OF ENVIRONMENT AND NATURAL RESOURCES DIVISION OF WATER RESOURCES.

Prepared in the Office of:

Mead&Hunt

111 E. Hargett Street, Suite 300
Raleigh, North Carolina 27601
919-714-8670 | meadhunt.com
NC License No. F-1235

Designed by:

CARLAS SHARPLESS
NAME

4024
LEVEL III CERTIFICATION NO.

Reviewed in the Office of:

ROADSIDE ENVIRONMENTAL UNIT

1 South Wilmington St.
Raleigh, NC 27611

2018 STANDARD SPECIFICATIONS

Reviewed by:

JENNIFER PARISH

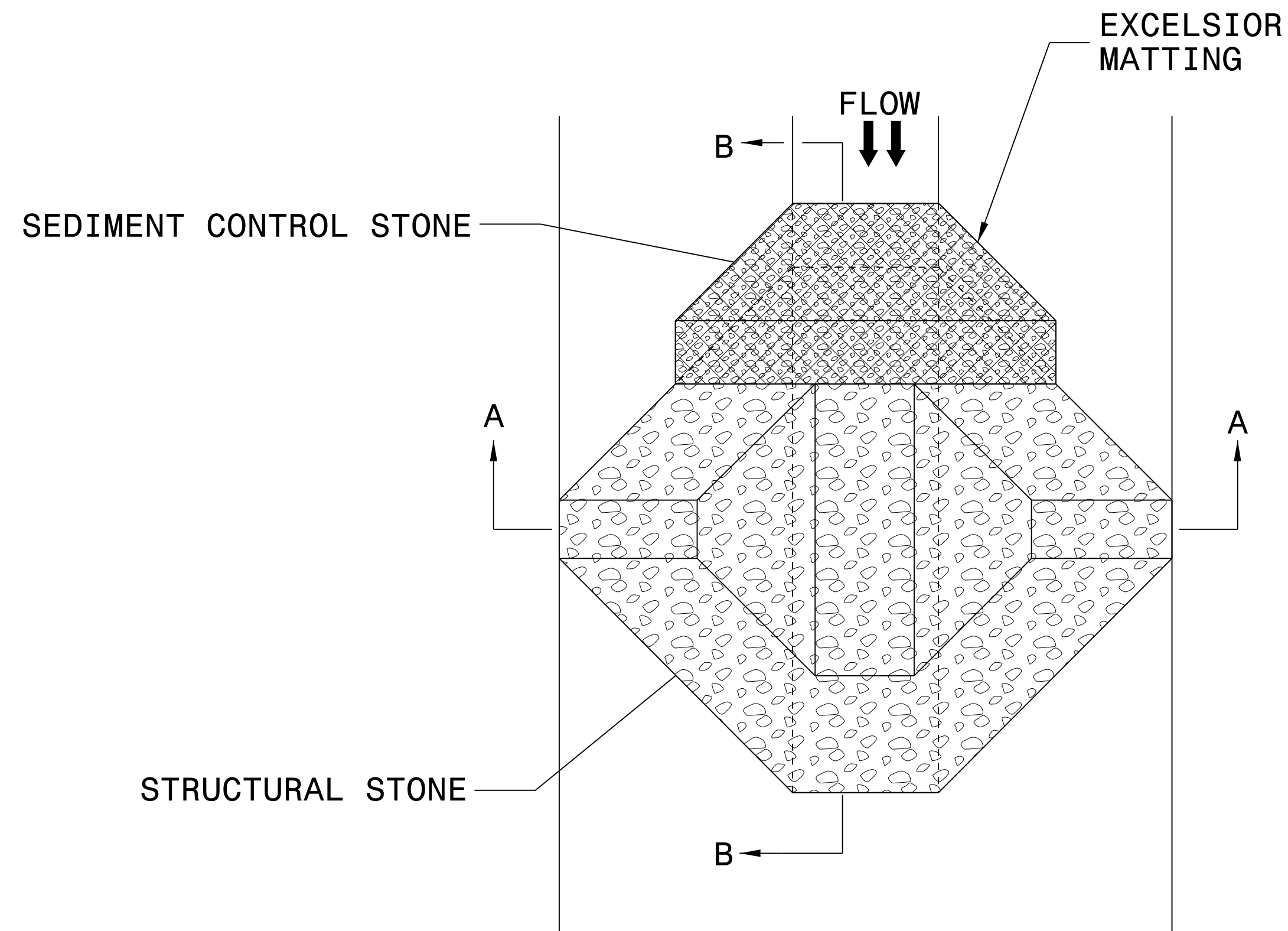
Roadway Standard Drawings

The following roadway english standards as appear in "Roadway Standard Drawings"- Roadway Design Unit - N. C. Department of Transportation - Raleigh, N. C., dated January 2018 and the latest revision thereto are applicable to this project and by reference hereby are considered a part of these plans.

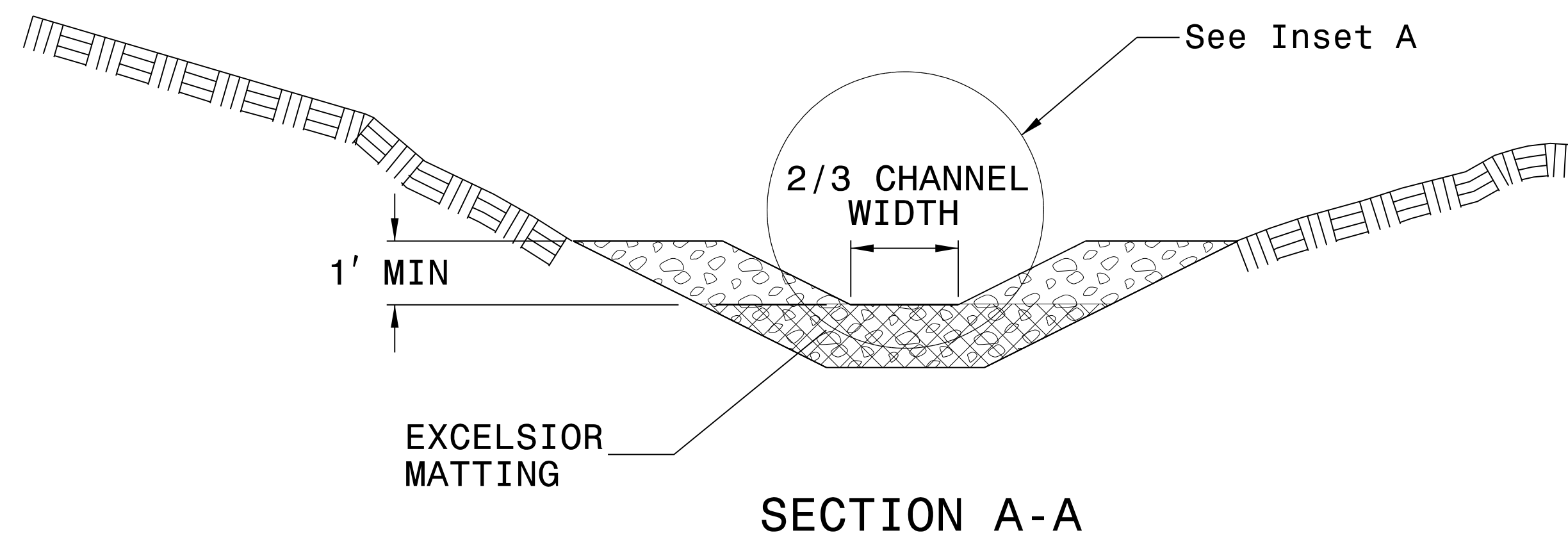
1604.01 Railroad Erosion Control Detail	1632.01 Rock Inlet Sediment Trap Type A
1605.01 Temporary Silt Fence	1632.02 Rock Inlet Sediment Trap Type B
1606.01 Special Sediment Control Fence	1632.03 Rock Inlet Sediment Trap Type C
1607.01 Gravel Construction Entrance	1633.01 Temporary Rock Silt Check Type A
1622.01 Temporary Berms and Slope Drains	1633.02 Temporary Rock Silt Check Type B
1630.01 Riser Basin	1634.01 Temporary Rock Sediment Dam Type A
1630.02 Silt Basin Type B	1634.02 Temporary Dam Type B
1630.03 Temporary Silt Ditch	1635.01 Rock Pipe Inlet Sediment Trap Type A
1630.04 Stilling Basin	1635.02 Rock Pipe Inlet Sediment Trap Type B
1630.05 Temporary Diversion	1640.01 Coir Fiber Baffle
1630.06 Special Stilling Basin	1645.01 Temporary Stream Crossing
1631.01 Matting Installation	

PROJECT REFERENCE NO. B-4968	SHEET NO. EC-2
RW SHEET NO.	
ROADWAY DESIGN ENGINEER	HYDRAULICS ENGINEER

TEMPORARY ROCK SILT CHECK TYPE 'A' WITH EXCELSIOR MATTING AND POLYACRYLAMIDE (PAM)



PLAN



SECTION A-A

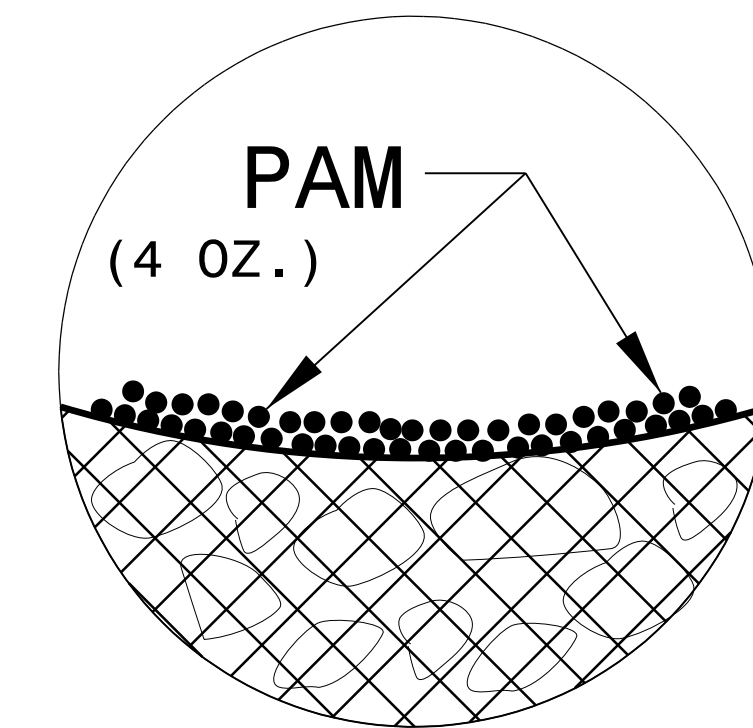
NOTES:

INSTALL TEMPORARY ROCK SILT CHECK TYPE A IN ACCORDANCE WITH ROADWAY STANDARD DRAWING NO. 1633.01.

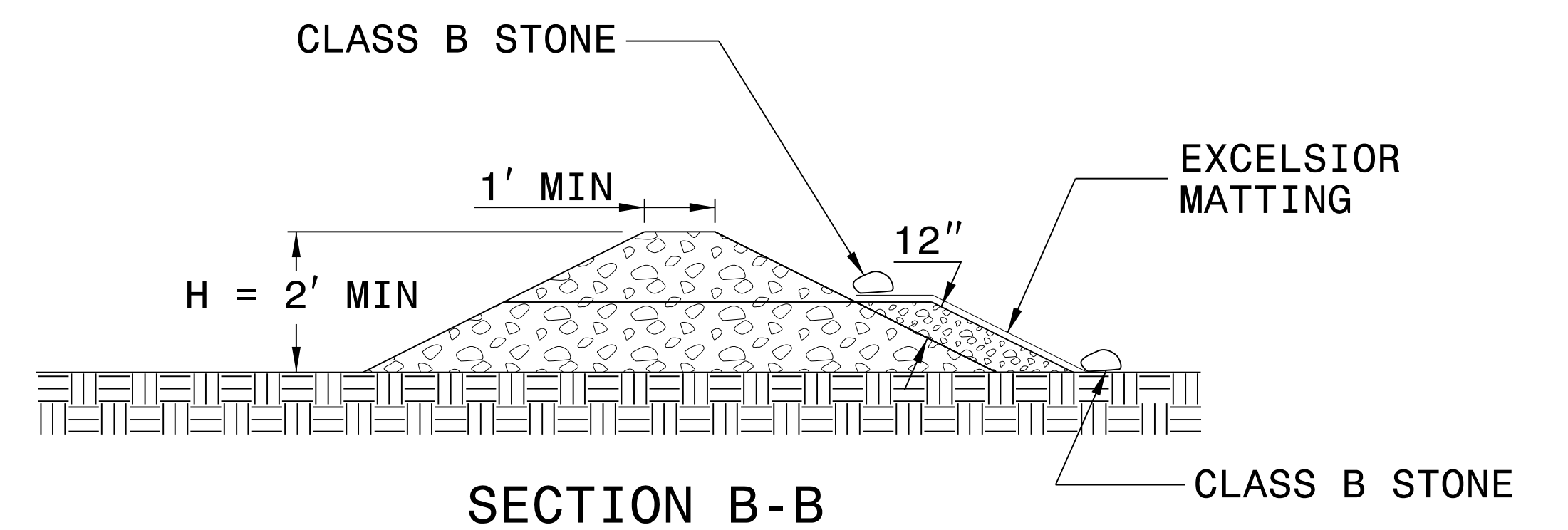
USE EXCELSIOR FOR MATTING MATERIAL AND ANCHOR MATTING SECTION AT TOP AND BOTTOM WITH CLASS B STONE.

PRIOR TO POLYACRYLAMIDE (PAM) APPLICATION, OBTAIN A SOIL SAMPLE FROM PROJECT LOCATION, AND FROM OFFSITE MATERIAL, AND ANALYZE FOR APPROPRIATE PAM FLOCCULANT TO BE APPLIED TO EACH ROCK SILT CHECK.

INITIALLY APPLY 4 OUNCES OF POLYACRYLAMIDE (PAM) TO TOP OF MATTING SECTION AND AFTER EVERY RAINFALL EVENT THAT EQUALS OR EXCEEDS 0.50 INCHES.



INSET A



SECTION B-B

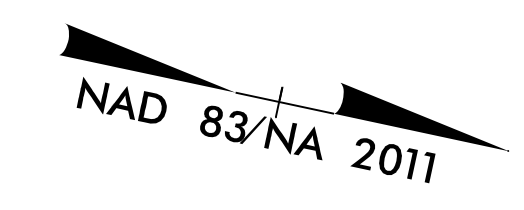
NOT TO SCALE

DIVISION OF HIGHWAYS
STATE OF NORTH CAROLINA

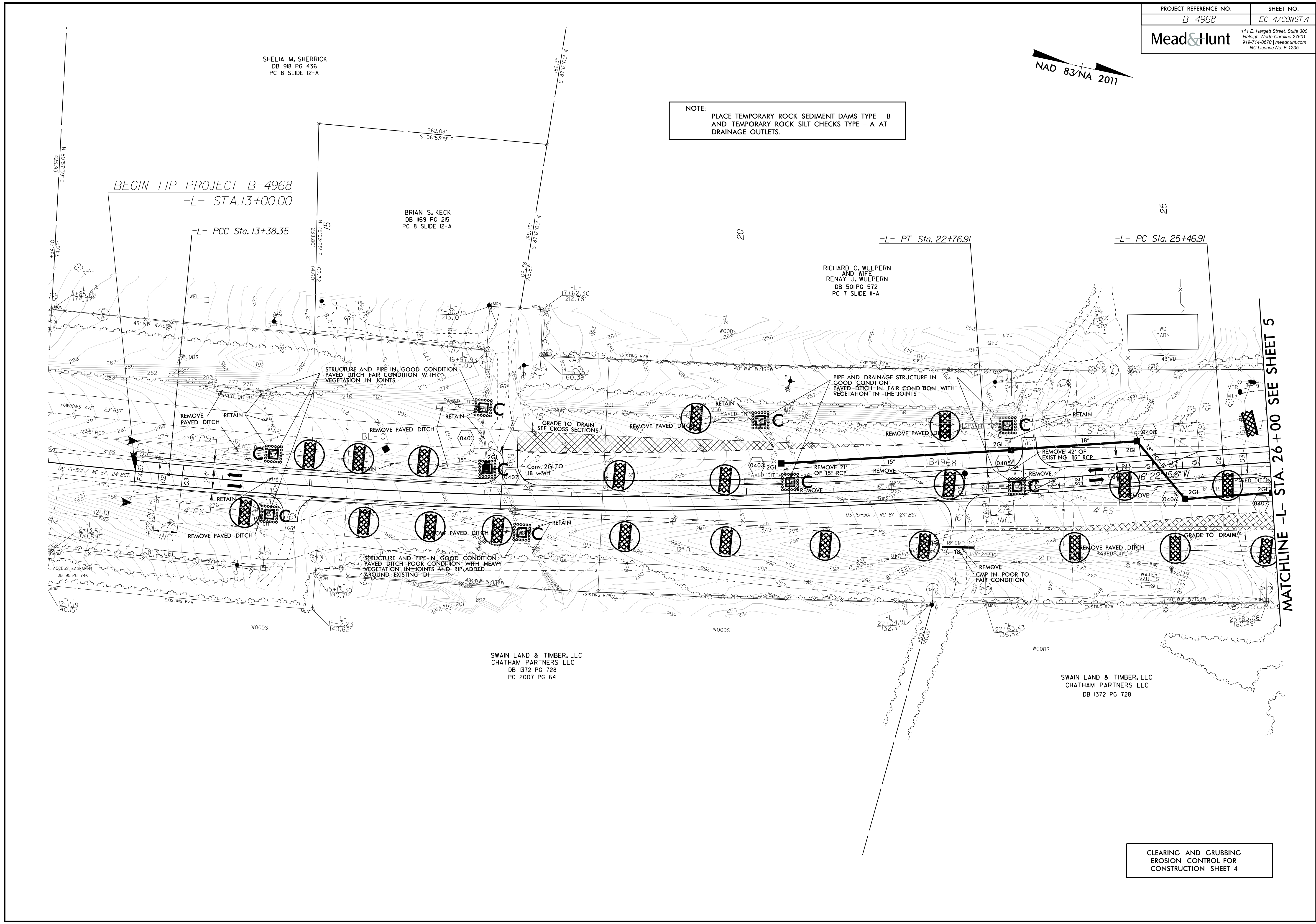
PROJECT REFERENCE NO. <i>B-4968</i>	SHEET NO. <i>EC-3B</i>
ROADWAY DESIGN ENGINEER	HYDRAULICS ENGINEER

SOIL STABILIZATION TIMEFRAMES

<i>SITE DESCRIPTION</i>	<i>STABILIZATION TIME</i>	<i>TIMEFRAME EXCEPTIONS</i>
PERIMETER DIKES, SWALES, DITCHES AND SLOPES	7 DAYS	NONE
HIGH QUALITY WATER (HQW) ZONES	7 DAYS	NONE
SLOPES STEEPER THAN 3:1	7 DAYS	IF SLOPES ARE 10' OR LESS IN LENGTH AND ARE NOT STEEPER THAN 2:1, 14 DAYS ARE ALLOWED.
SLOPES 3:1 OR FLATTER	14 DAYS	7 DAYS FOR SLOPES GREATER THAN 50' IN LENGTH.
ALL OTHER AREAS WITH SLOPES FLATTER THAN 4:1	14 DAYS	NONE, EXCEPT FOR PERIMETERS AND HQW ZONES.



NOTE:
PLACE TEMPORARY ROCK SEDIMENT DAMS TYPE - B
AND TEMPORARY ROCK SILT CHECKS TYPE - A AT
DRAINAGE OUTLETS.



SHELIA M. SHERRICK
DB 918 PG 436
PC 8 SLIDE 12-A

BRIAN S. KECK
DB 1169 PG 215
PC 8 SLIDE 12-A

RICHARD C. WULPERN
AND WIFE
RENAVY J. WULPERN
DB 501 PG 572
PC 7 SLIDE 11-A

SWAIN LAND & TIMBER, LLC
CHATHAM PARTNERS LLC
DB 1372 PG 728
PC 2007 PG 64

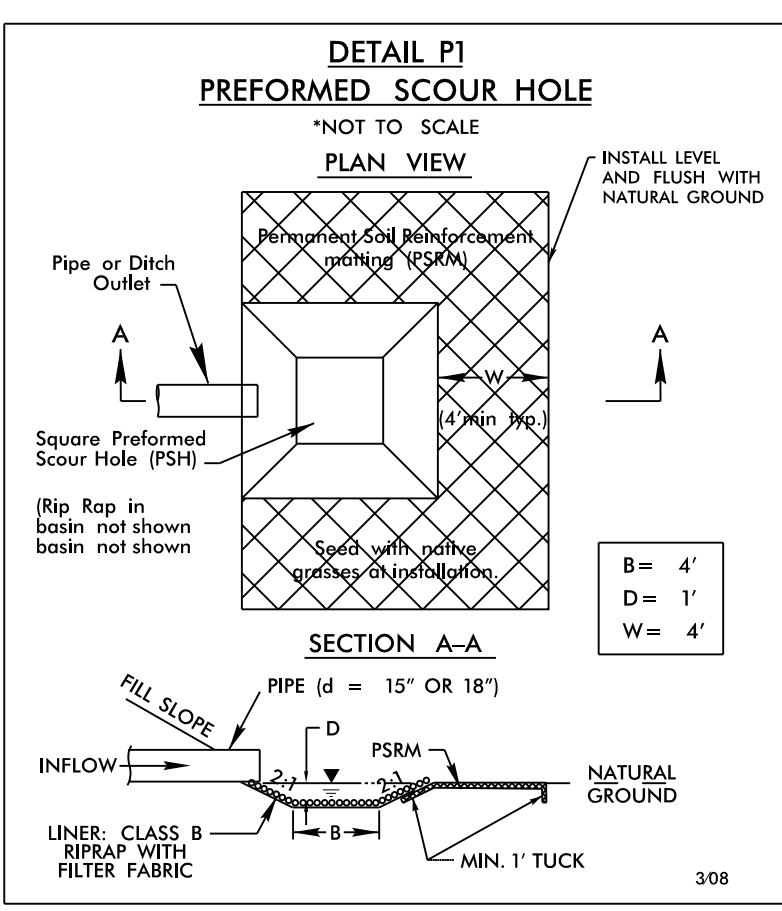
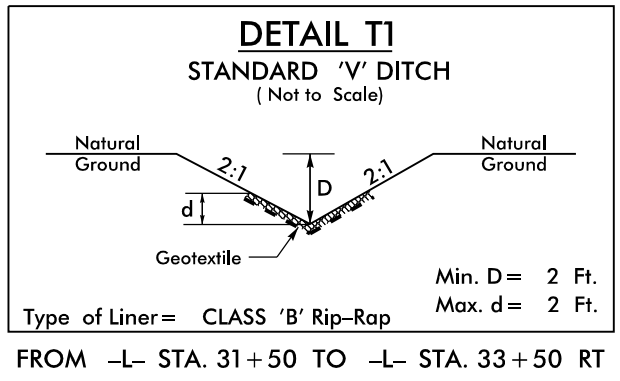
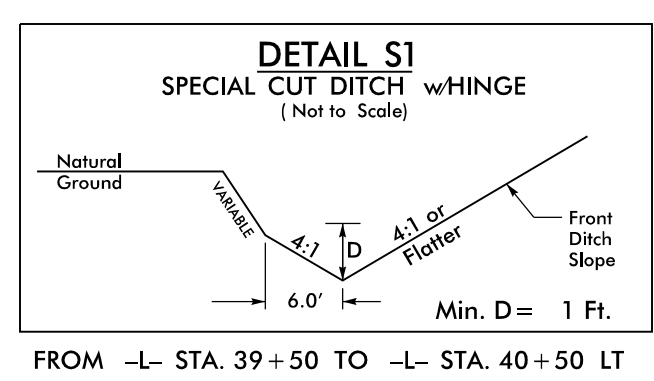
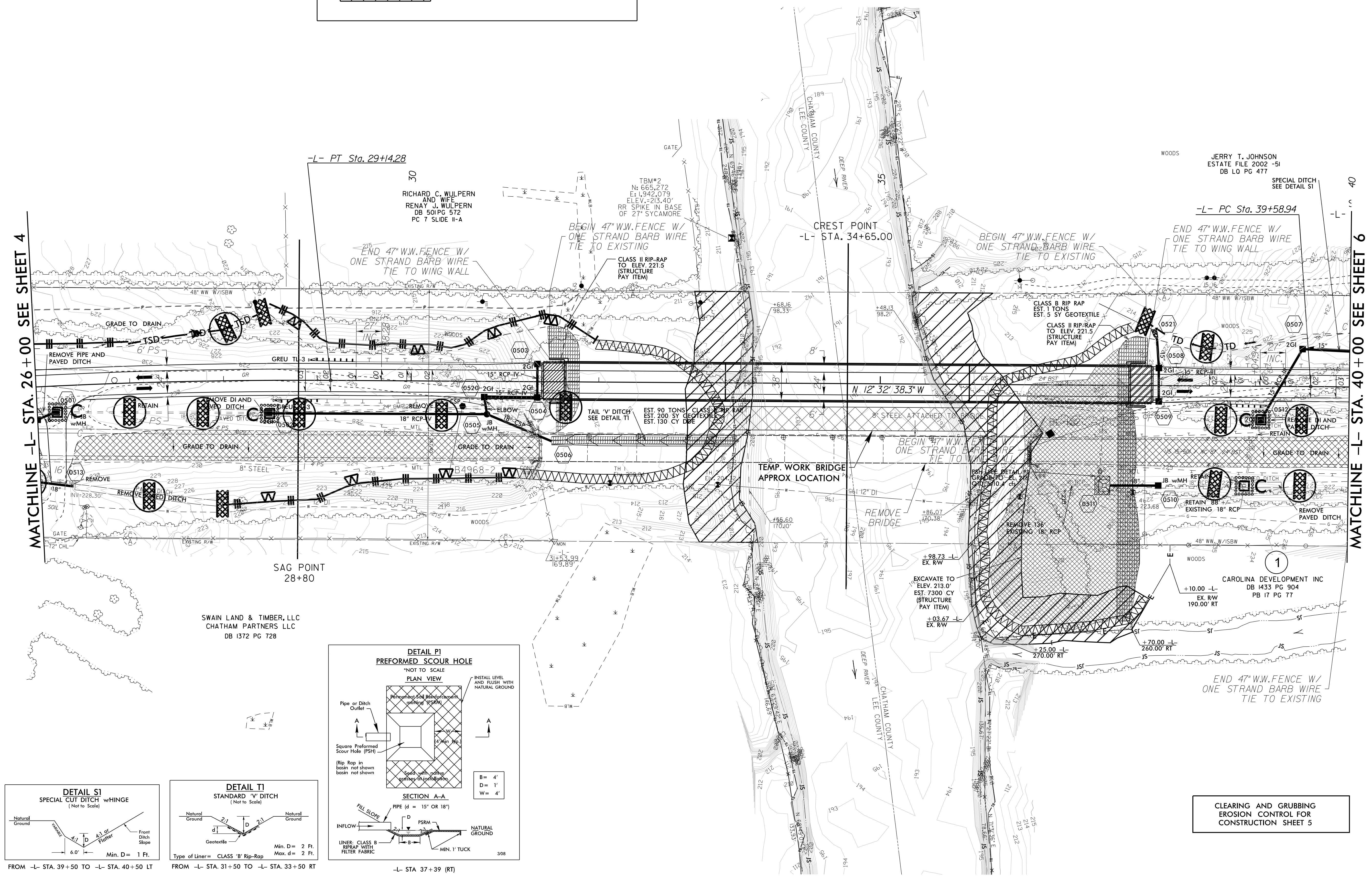
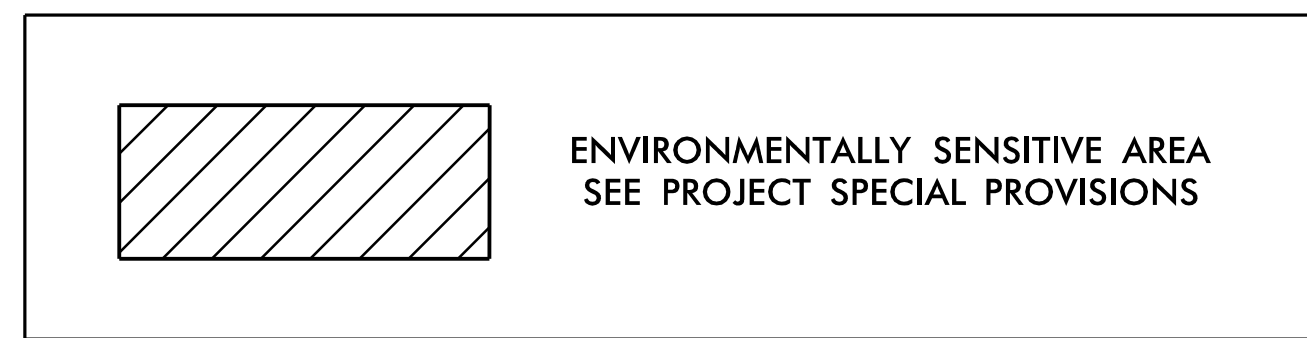
SWAIN LAND & TIMBER, LLC
CHATHAM PARTNERS LLC
DB 1372 PG 728

CLEARING AND GRUBBING
EROSION CONTROL FOR
CONSTRUCTION SHEET 4

MATCHLINE -L- STA. 26+00 SEE SHEET 5

NOTE:
PLACE TEMPORARY ROCK SEDIMENT DAMS TYPE - B
AND TEMPORARY ROCK SILT CHECKS TYPE - A AT
DRAINAGE OUTLETS.

NAD 83/NA 2011



CLEARING AND GRUBBING
EROSION CONTROL FOR
CONSTRUCTION SHEET 5

FROM -L- STA. 39+50 TO -L- STA. 40+50 LT

FROM -L- STA. 31+50 TO -L- STA. 33+50 RT

-L- STA 37+39 (RT)

NAD 83/NA 2011

NOTE: WATER LINE EXTENSION PLACED BY GIS
BUT CALLED BUT WAS NOT MARKED

NOTE:
PLACE TEMPORARY ROCK SEDIMENT DAMS TYPE - B
AND TEMPORARY ROCK SILT CHECKS TYPE - A AT
DRAINAGE OUTLETS.

NOTE: GAS LINE EXTENSION WAS NOT MARKED BY 811
WITNESS POST LOCATED ALONG WOOD SPLIT RAIL FENCE

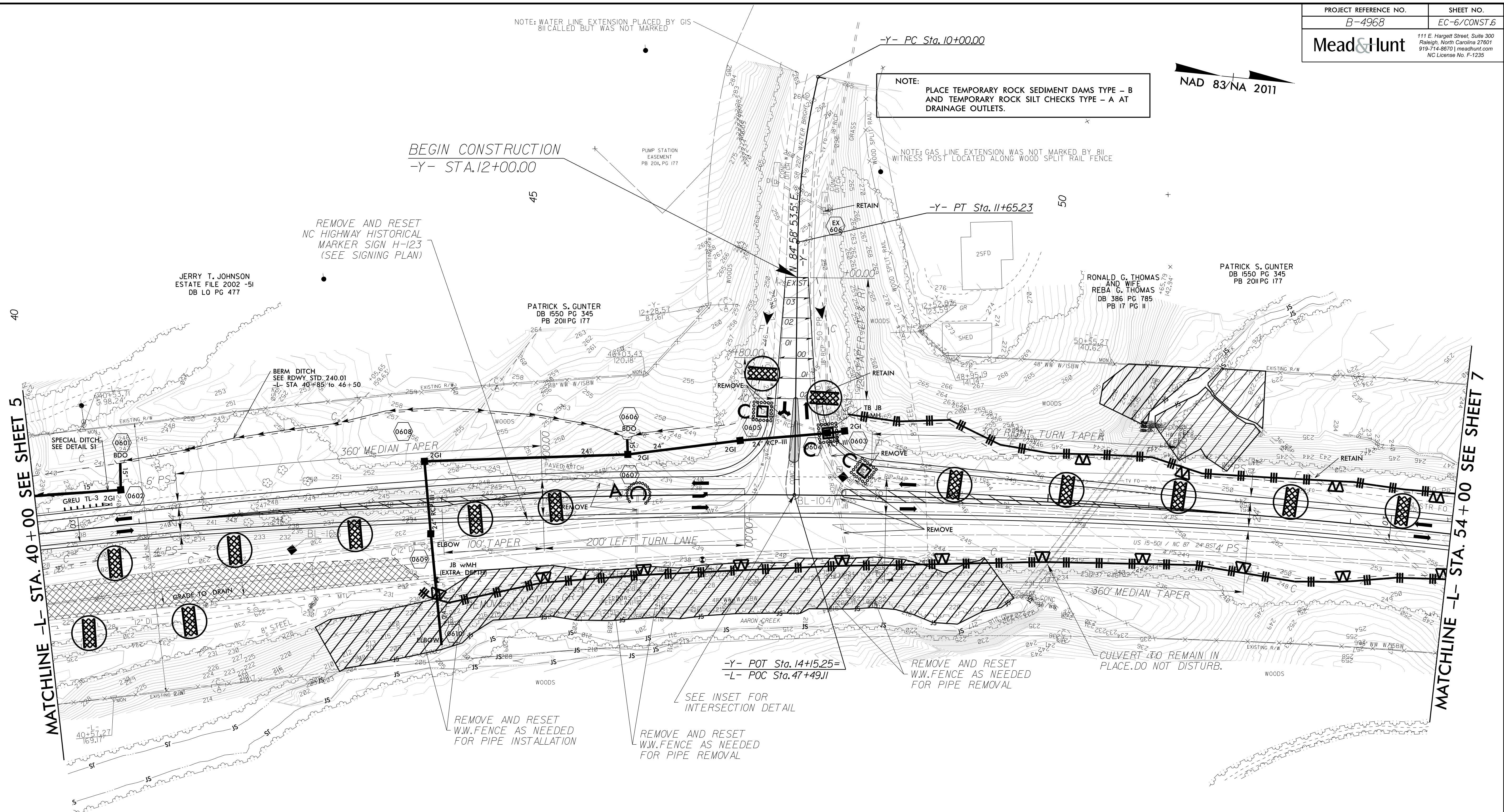
BEGIN CONSTRUCTION
-Y- STA. 12+00.00

40

50

MATCHLINE -L- STA. 40+00 SEE SHEET 5

MATCHLINE -L- STA. 54+00 SEE SHEET 7



-Y- POT Sta. 14+15.25=
-L- POC Sta. 47+49.11

REMOVE AND RESET
W.W.FENCE AS NEEDED
FOR PIPE INSTALLATION

REMOVE AND RESET
W.W.FENCE AS NEEDED
FOR PIPE REMOVAL

REMOVE AND RESET
W.W.FENCE AS NEEDED
FOR PIPE REMOVAL

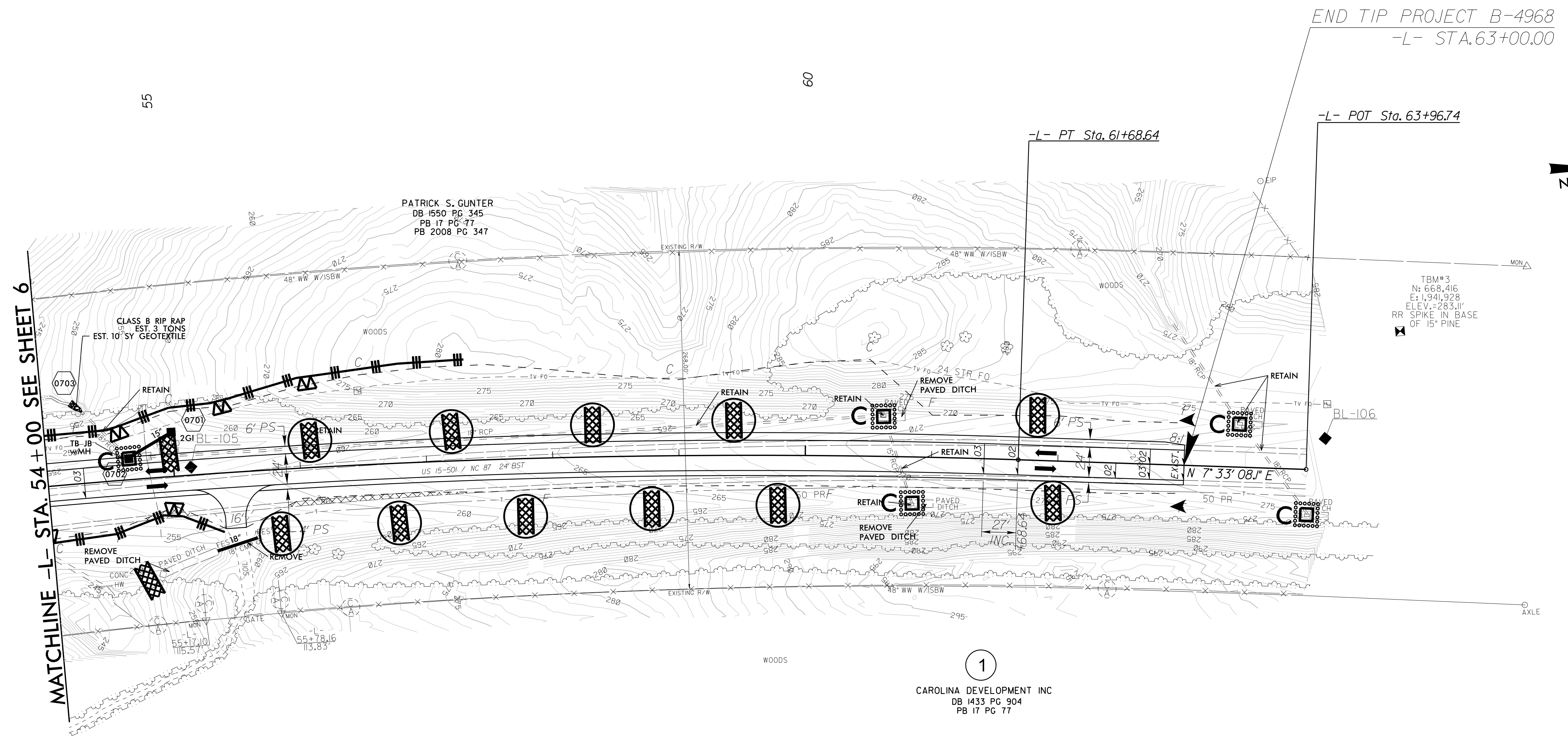
CULVERT TO REMAIN IN
PLACE. DO NOT DISTURB.

1

CAROLINA DEVELOPMENT INC
DB 1433 PG 904
PB 17 PG 77

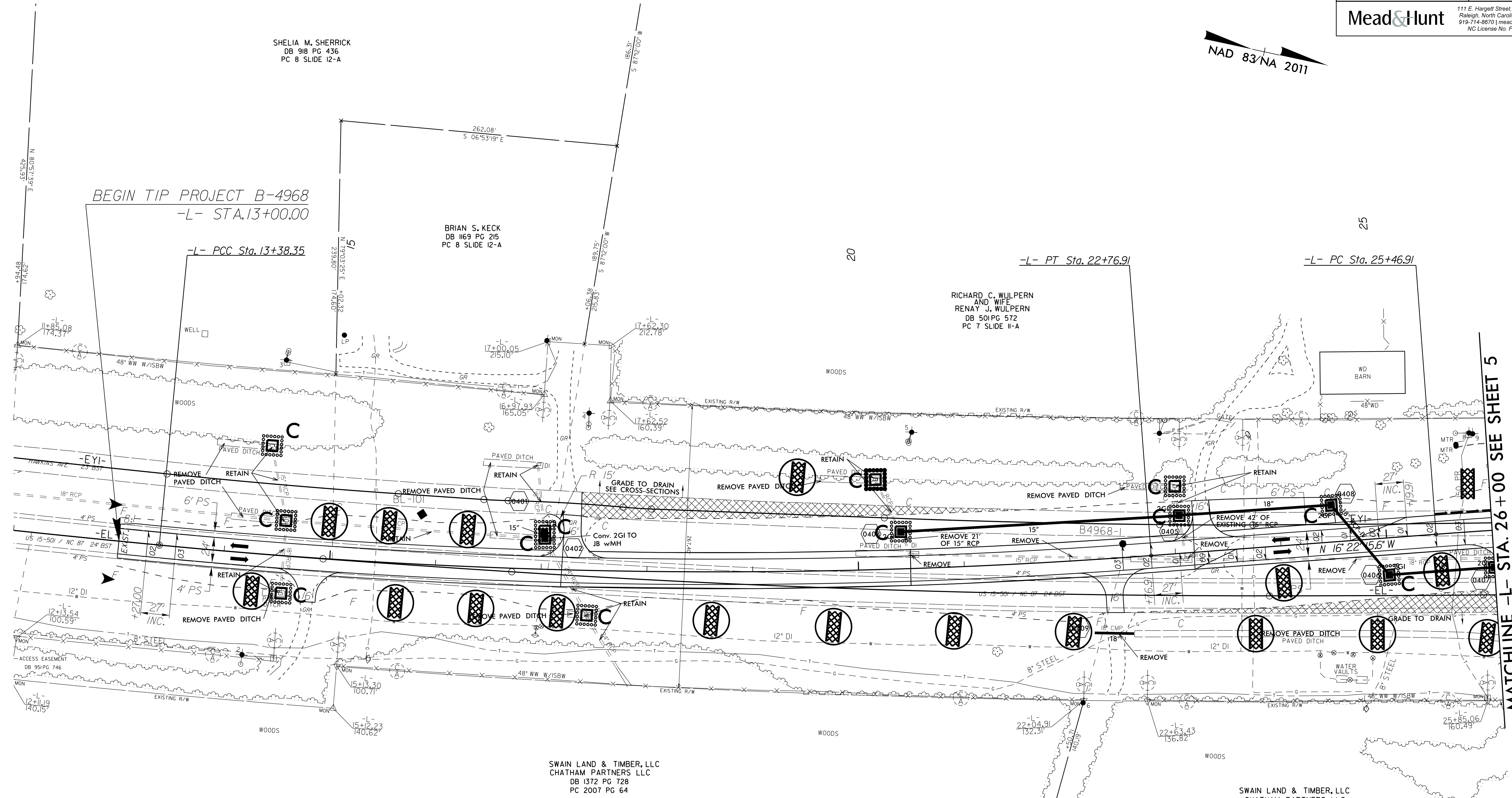
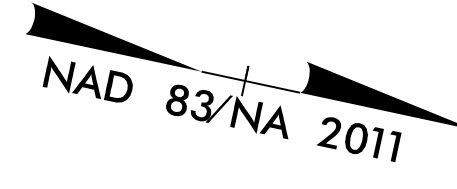
CLEARING AND GRUBBING
EROSION CONTROL FOR
CONSTRUCTION SHEET 6

NOTE:
 PLACE TEMPORARY ROCK SEDIMENT DAMS TYPE - B
 AND TEMPORARY ROCK SILT CHECKS TYPE - A AT
 DRAINAGE OUTLETS.



1
 CAROLINA DEVELOPMENT INC
 DB 1433 PG 904
 PB 17 PG 77

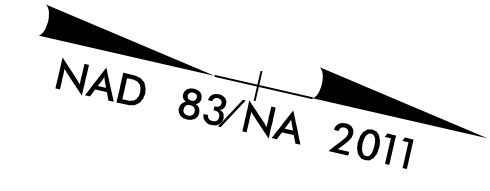
CLEARING AND GRUBBING
 EROSION CONTROL FOR
 CONSTRUCTION SHEET 7



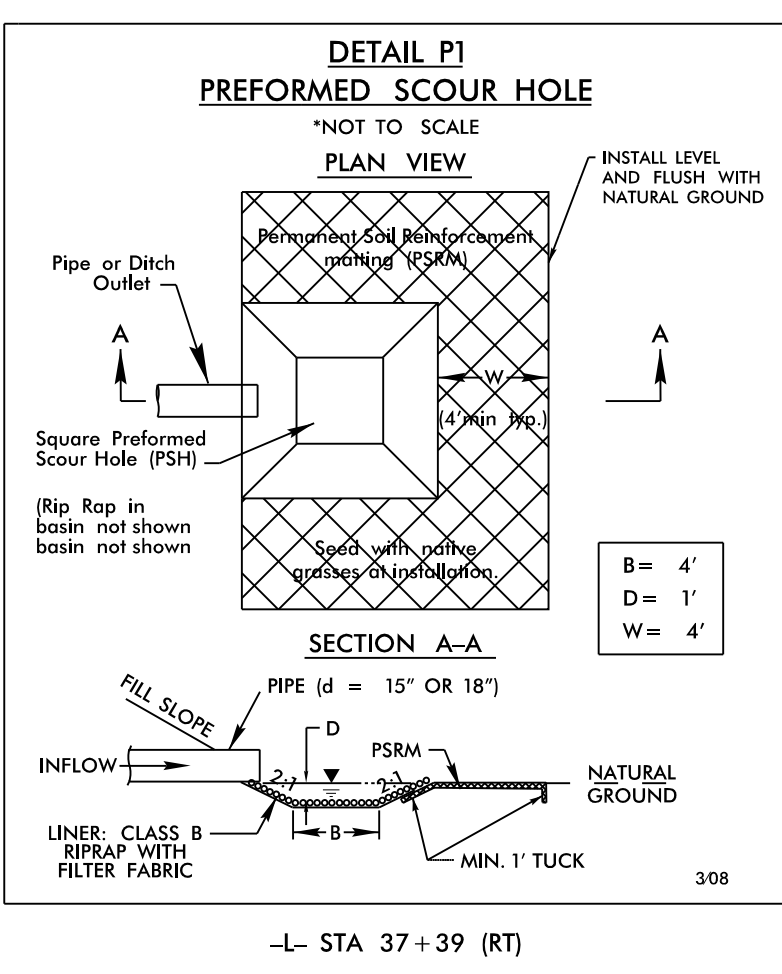
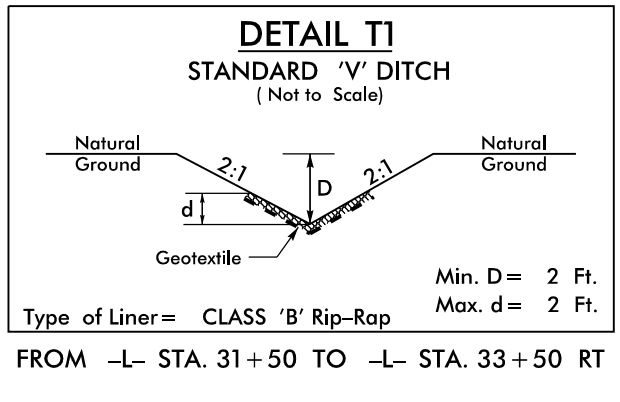
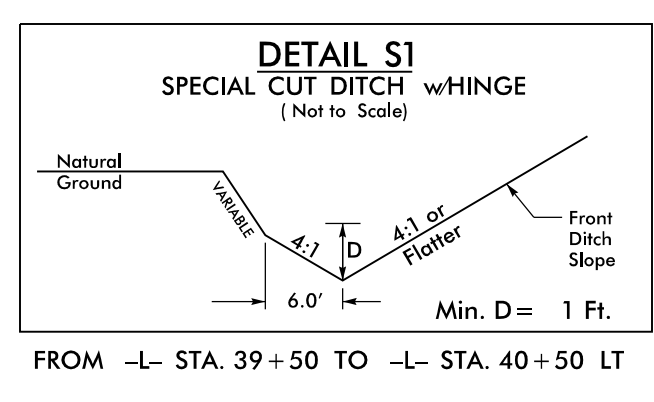
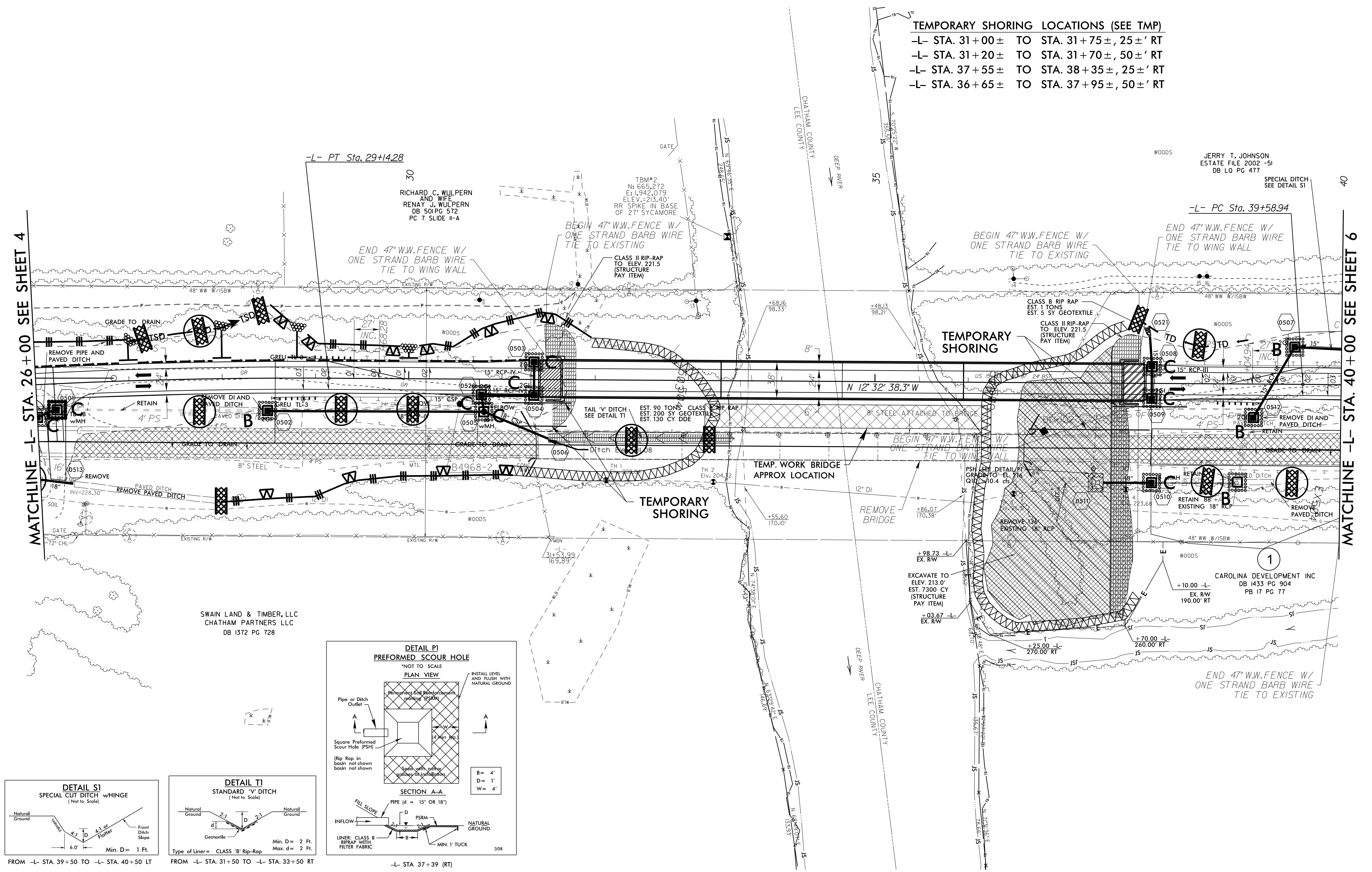
**INSTALL MATTING FOR
EROSION CONTROL IN THE
PROPOSED DITCH LINE.**

Sta. 15+00 LT to Sta. 24+50 LT
Sta. 23+00 RT to Sta. 26+00 RT

MATCHLINE -L- STA. 26+00 SEE SHEET 5



TEMPORARY SHORING LOCATIONS (SEE TMP)
 -L- STA. 31+00± TO STA. 31+75±, 25'± RT
 -L- STA. 31+20± TO STA. 31+70±, 50'± RT
 -L- STA. 37+55± TO STA. 38+35±, 25'± RT
 -L- STA. 36+65± TO STA. 37+95±, 50'± RT



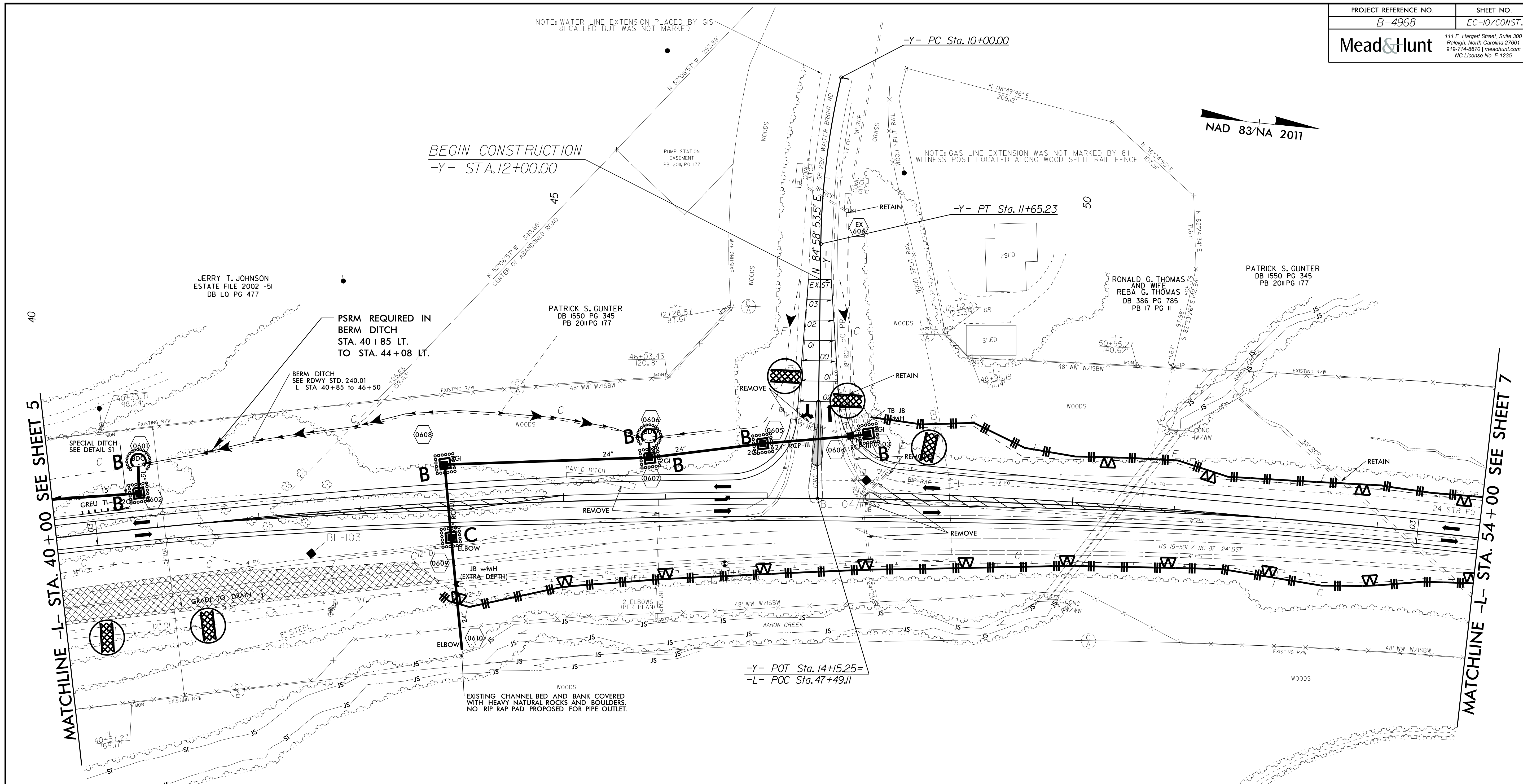
SWAIN LAND & TIMBER, LLC
 CHATHAM PARTNERS LLC
 DB 1372 PG 728

CAROLINA DEVELOPMENT INC
 DB 1433 PG 904
 PB 17 PG 77

JERRY T. JOHNSON
 ESTATE FILE 2002 -51
 DB LO PG 477

RICHARD C. WULPERN
 AND WIFE
 RENAY J. WULPERN
 DB 501 PG 572
 PC 7 SLIDE II-A

TBM#2
 N: 665,272
 E: 1,942,079
 ELEV. = 213.40
 RR SPIKE IN BASE
 OF 27' SYCAMORE



NOTE: WATER LINE EXTENSION PLACED BY GIS
 BUT CALLED BUT WAS NOT MARKED

NOTE: GAS LINE EXTENSION WAS NOT MARKED BY 811
 WITNESS POST LOCATED ALONG WOOD SPLIT RAIL FENCE

BEGIN CONSTRUCTION
 -Y- STA. 12+00.00

JERRY T. JOHNSON
 ESTATE FILE, 2002 -51
 DB LO PG 477

PATRICK S. GUNTER
 DB 1550 PG 345
 PB 2011 PG 177

RONALD G. THOMAS
 AND WIFE
 REBA G. THOMAS
 DB 386 PG 785
 PB 17 PG II

PATRICK S. GUNTER
 DB 1550 PG 345
 PB 2011 PG 177

PSRM REQUIRED IN
 BERM DITCH
 STA. 40+85 LT.
 TO STA. 44+08 LT.

BERM DITCH
 SEE RDWY STD. 240.01
 -L- STA. 40+85 TO 46+50

-Y- POT Sta. 14+15.25=
 -L- POC Sta. 47+49.11

EXISTING CHANNEL BED AND BANK COVERED
 WITH HEAVY NATURAL ROCKS AND BOULDERS.
 NO RIP RAP PAD PROPOSED FOR PIPE OUTLET.

INSTALL MATTING FOR
 EROSION CONTROL IN THE
 PROPOSED DITCH LINE.

Sta. 40+50 LT to Sta. 47+00 LT
 Sta. 48+00 LT to Sta. 49+50 LT

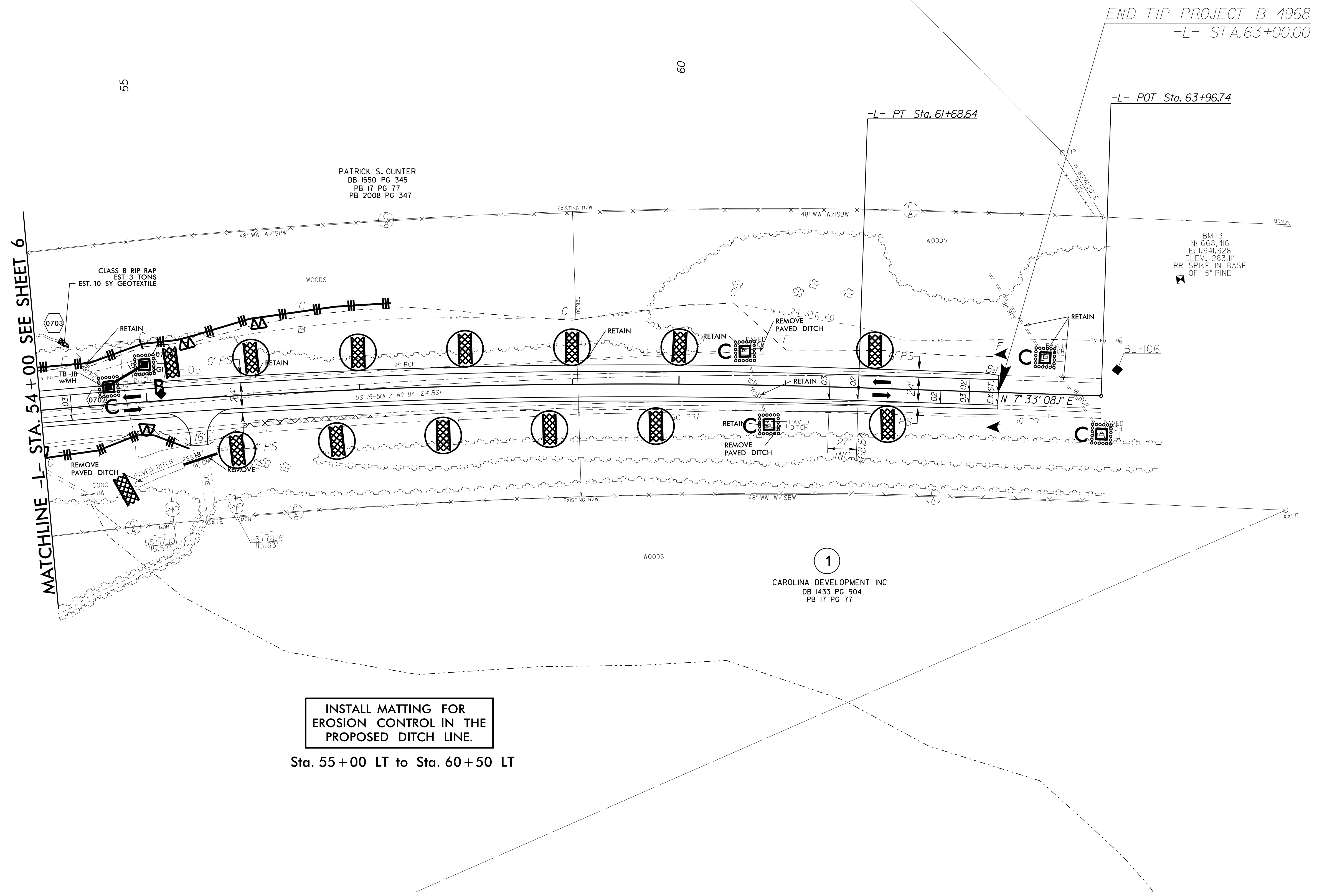
1
 CAROLINA DEVELOPMENT INC
 DB 1433 PG 904
 PB 17 PG 77

40

MATCHLINE -L- STA. 40+00 SEE SHEET 5

MATCHLINE -L- STA. 54+00 SEE SHEET 7





INSTALL MATTING FOR
EROSION CONTROL IN THE
PROPOSED DITCH LINE.

Sta. 55+00 LT to Sta. 60+50 LT