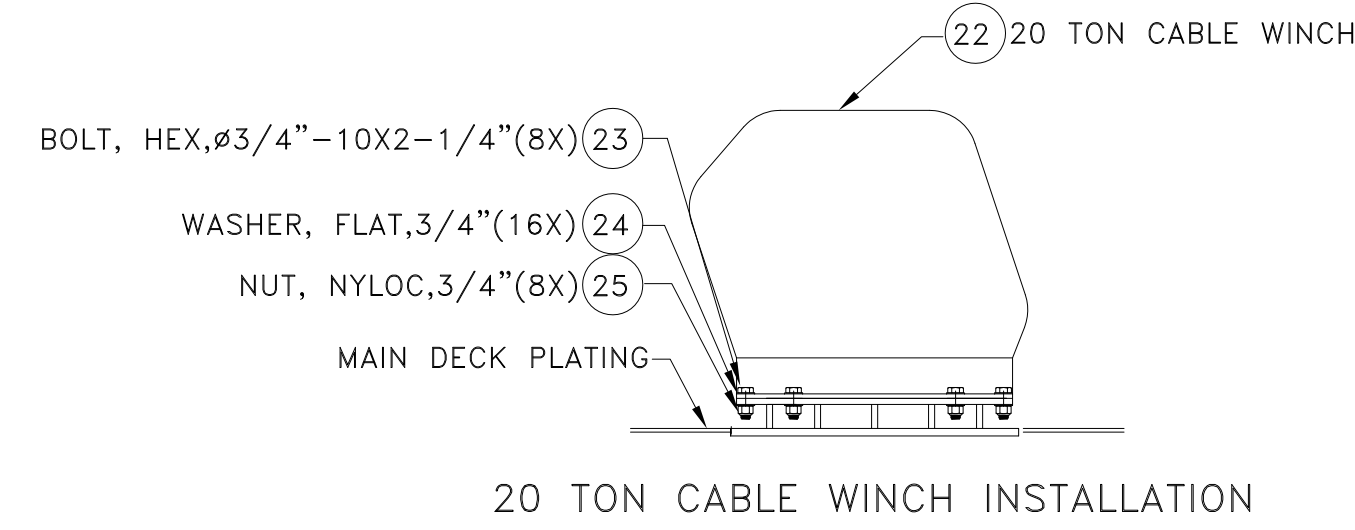
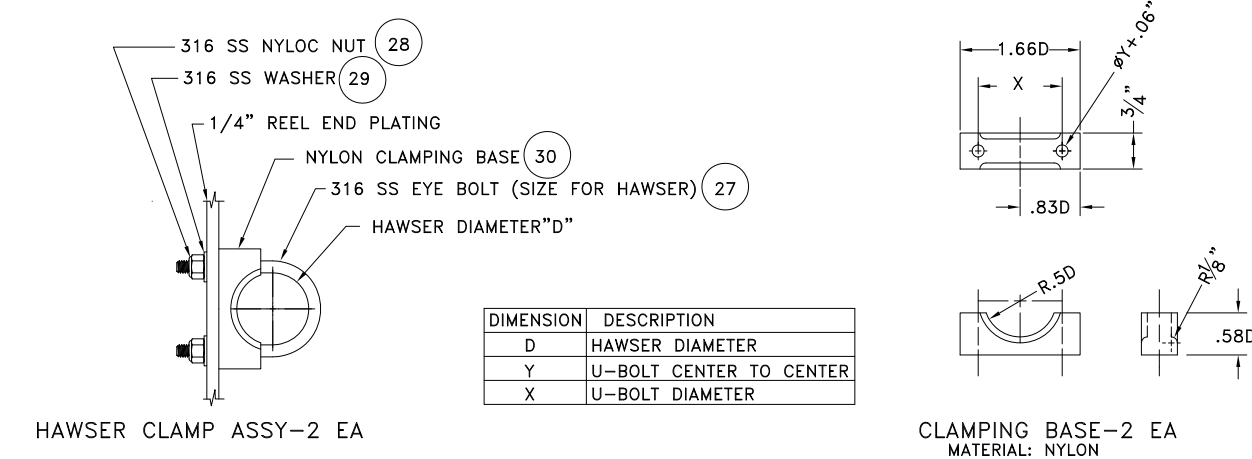
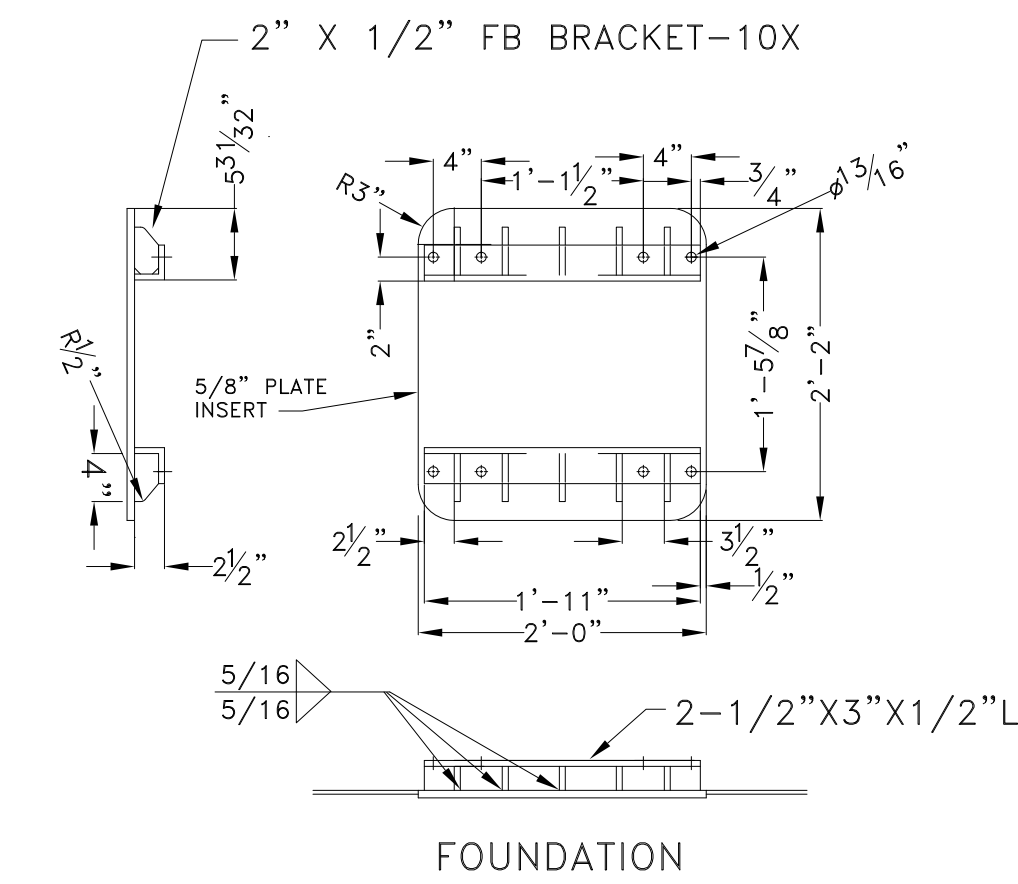


**16 CAPSTAN FOUNDATION**  
 MATERIAL : A36 STEEL & NOTED  
 SCALE: 3/4" = 1'

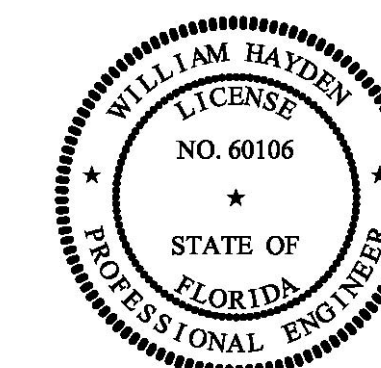


**21 20 TON CABLE WINCH FOUNDATION-2EA**  
 MATERIAL : A36 STEEL & NOTED  
 SCALE: 3/4" = 1'



**DETAIL E**  
 HAWSER DEAD END CONNECTION  
 SCALE: 3"=1' UNLESS OTHERWISE SPECIFIED

DIMENSION	DESCRIPTION
D	HAWSER DIAMETER
Y	U-BOLT CENTER TO CENTER
X	U-BOLT DIAMETER



PROFESSIONAL ENGINEER

DeJong & Lebet, Inc.  
 Naval Architects  
 Marine Engineers  
 Consultants  
 Surveyors

1734 Emerson Street  
 Jacksonville, Florida 32207  
 www.dejongandlebet.com

Phone: (904) 399-3673  
 Fax: (904) 599-1522  
 info@dejongandlebet.com

Title: 45.5'x20'x6.5' NCDOT PUSHBOAT

**DECK CAPSTAN INSTALLATION  
 & HAWSER REEL DETAILS**

Dwg. No. 17-1393-685  
 Art. No. 0  
 Sht. 2 of 2

Drawn By: JAH Date: DECEMBER 19, 2018  
 Checked By: Date:  
 App'd By: Scale: AS NOTED  
 ABS App'l: USCG App'l: