

MATERIAL SCHEDULE

SERVICE	SIZE	PIPE	COMPONENTS				VALVES		BOLTING		REMARKS
			TAKEDOWN JOINTS	FITTINGS	FLEX CONNECT	GASKETS	BODY	TRIM	BOLTS/STUDS	NUTS/WASHERS	
FUEL OIL SERVICE PIPING MAWP: 15 PSIG MAWT: 126°F	ALL	CARBON STEEL, SCH 80, SEAMLESS, ASTM A53 OR ASTM A106 GRADE B, ANSI B36.10	FLANGE SOCKET WELD, WELD NECK OR SLIP ON, CARBON STEEL, ASTM A105, ANSI B16.5 UNION GROUND JOINT, SOCKET WELD CARBON STEEL, ASTM A105, MSS-SP-83	SOCKET WELD CARBON STEEL, ASTM A105 OR ASTM A234 GR WPB, ANSI B16.11 BUTTWELD CARBON STEEL, ASTM A234, GR WPB, ANSI B16.9 OR B16.28	FLEX HOSE MEETING SAE J1942 AND J1475 FOR DIESEL SERVICE SEE NOTE 9	GARLOCK STYLE 3000	GATE FLANGED CARBON STEEL, ASTM A216 GR WCB OR ASTM A105 ANSI B16.34 BALL THREADED, CARBON STEEL, ASTM A105, ASTM A181, OR ASTM A216 GR WCB CHECK THREADED, CARBON STEEL, ASTM A105, ASTM A181, OR ASTM A216 GR WCB	GATE CRES STEM, DISC AND SEAT BALL CHROME PLATED BALL, RPTFE OR VITON SEATS CHECK CRES DISC	CARBON STEEL ASTM A307 GR B ANSI B18.2.1 HEX-HEAD CARBON STEEL ASTM A563 GR A ANSI B18.2.2		

BILL OF MATERIALS

#	QTY.	SERVICE	TYPE	MAKE/MODEL	COMMENTS
1	2	FO TANK LEVEL ALARM	SWITCH MODULE ON GEM SURESITE SIGHTGLASS	GEM MINI SURESITE PART # 86567 SPST, 20VA RATING	MOUNTS TO SURESITE TUBE OPPOSITE LEVEL INDICATOR FLAGS
2	2	ME FUEL FILTER	DUPLEX COALESCING, 180 GPH	RACOR 75900MAX	SEE NOTE 11
3	2	REMOTE SHUTDOWN FO TANK VALVES	1-1/4" 150# ANSI FLG. GLOBE VALVE, HYD. ACTUATED	ABS APPROVED. LK VALVE	W&O 973357.032.ANSI
4	2	CAM LOCK	2" CAM AND GROOVE MALE HOSE COUPLING AND CAP, 316 SS	MCMASTER CARR 53015K45 & 53015K85	
5	2	VENT GUARD	INVERTED VENT PIPE HEAD	WINTEB 2000 SERIESDN65 W/ SCREEN	
6	2	REMOTE FUEL SHUTOFF	REACH ROD	B&G MARINE	SEE DETAIL 1-2A FOR PART NUMBERS
P-1/2"	AS REQ'D		1/2" SCH.40 PIPE, SEAMLESS, BLACK		ASTM A-106
P-3/4"	AS REQ'D		3/4" SCH.40 PIPE, SEAMLESS, BLACK		ASTM A-106
P-1"	AS REQ'D		1" SCH.40 PIPE, SEAMLESS, BLACK		ASTM A-106
P-1 1/4"	AS REQ'D		1-1/4" SCH.40 PIPE, SEAMLESS, BLACK		ASTM A-106
H-1	24		3/4" FUEL OIL HOSE, USCG APPROVED 150# WOG		SAE J-1942, SAE J-1475 (FITTINGS)
H-2	24		1/2" FUEL OIL HOSE, USCG APPROVED 150# WOG		SAE J-1942, SAE J-1475 (FITTINGS)
V-1	2		1/2" FULL PORT BALL VALVE, STEEL, SCREWED,		ASTM A105/A234
V-2	4		3/4" FULL PORT BALL VALVE, STEEL, SCREWED,		ASTM A105/A234
V-3	4		1" FULL PORT BALL VALVE, STEEL, SCREWED		ASTM A105/A234
V-4	4		1-1/4" GATE VALVE, STEEL, FLANGED		ASTM A105/A234
CV-1	2		1/2" LIFT CHECK VALVE, STEEL, SCREWED, 150# WOG		ASTM A105/A234
CV-2	2		1" LIFT CHECK VALVE, STEEL, SCREWED, 150# WOG		ASTM A105/A234

SYMBOLS LIST

	NPS PIPE SIZE AND FLOW DIRECTION ARROW
	REDUCER
	BULKHEAD PENETRATION (SEE DETAIL 2-5A)
	HOSE
	PIPE CAP/CAMLOCK FITTING
	DUPLEX FILTER
	TRIPLEX FILTER
	DRIP PAN (SEE NOTE 11)
	BALL VALVE
	CHECK VALVE
	GATE VALVE WITH REACH ROD
	TANK SUCTION BELLMOUTH (SEE NOTE 10)
	LEVEL SWITCH
	LIQUID LEVEL TRANSDUCER

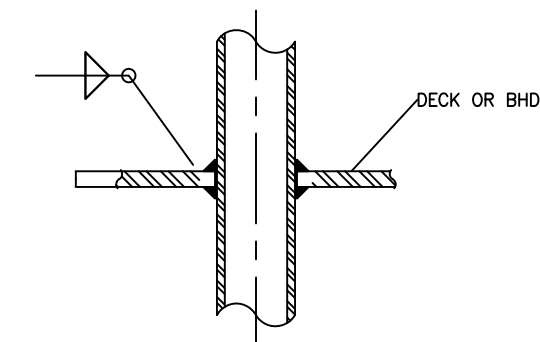


DIAGRAM 1-1A
TANK BULKHEAD PENETRATION

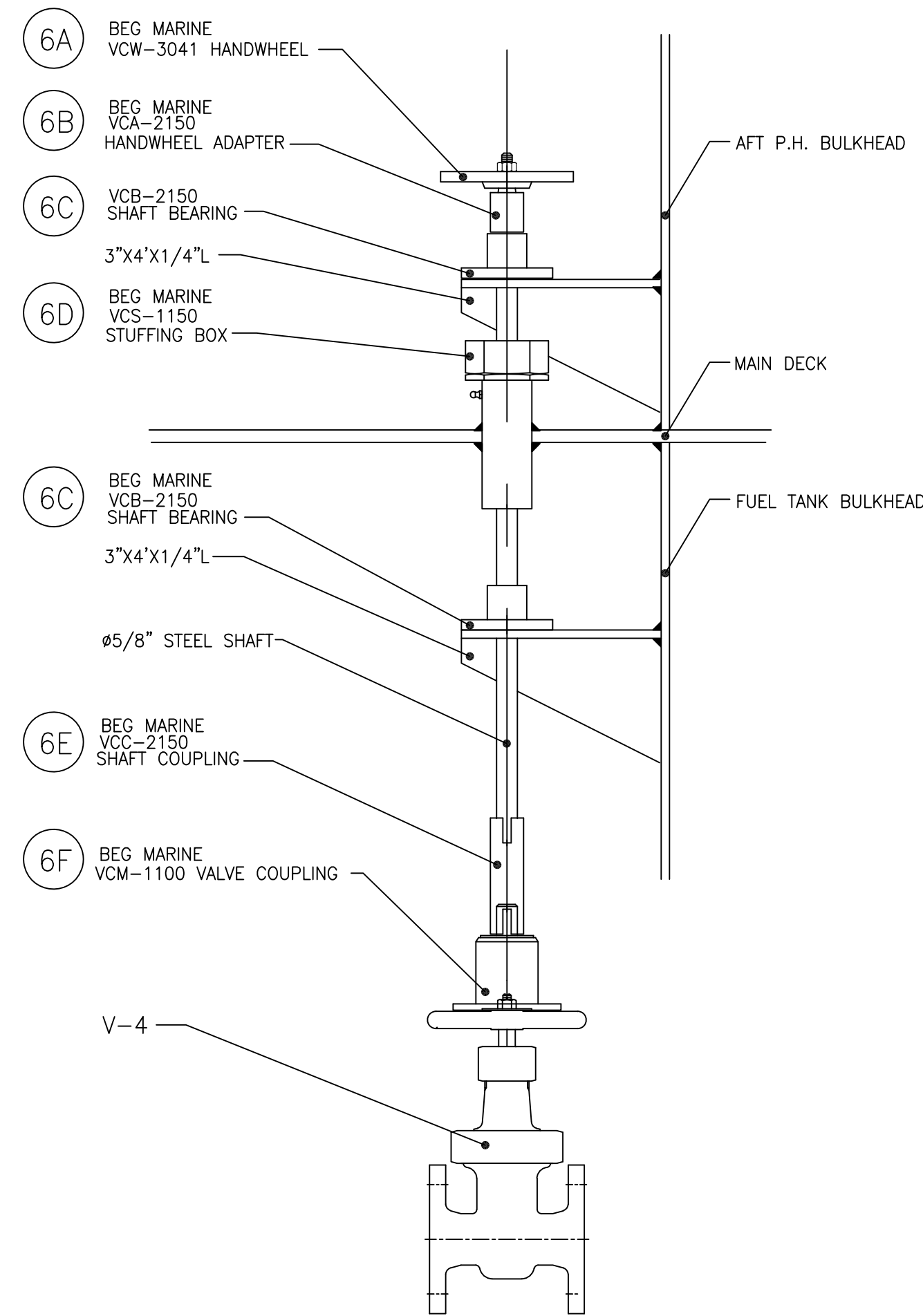
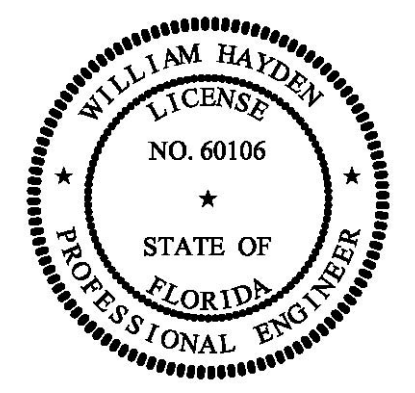


DIAGRAM 1-2A
FUEL SHUTOFF - 2 EA



- GENERAL NOTES -		- GENERAL NOTES -		- ALTERATIONS -		- RESERVATIONS -		- REFERENCES -	
NO.	DESCRIPTION	NO.	DESCRIPTION	NO.	DESCRIPTION	NO.	DESCRIPTION	NO.	DESCRIPTION
1.	PIPING SYSTEM MATERIALS, INSTALLATION, AND WORKMANSHIP SHALL BE IN ACCORDANCE 46 CFR SUBCHAPTER M (TOWING VESSELS).	10.	FUEL OIL SUPPLY SUCTION BELLSOUTH AREA SHALL BE AT LEAST 1 1/2 TIMES THE SUCTION PIPE INTERNAL AREA.					1.	DWG 1393-506 FILLS, VENTS & SOUNDS
2.	THIS DRAWING IS DIAGRAMMATIC ONLY AND DOES NOT REPRESENT A COMPLETE DETAILED DESIGN. THE CONTRACTOR SHALL DEVELOP FULLY A DETAILED DESIGN THAT PROVIDES A FUNCTIONAL ARRANGEMENT SUITABLE FOR INSTALLATION.	11.	FUEL FILTERS SHALL BE USCG APPROVED WITH METAL BOWLS FILTERS SHALL BE FITTED WITH BALL VALVES FOR FILTER ISOLATION WHILE THE ENGINE IS RUNNING, WATER PROBES, AND DIFFERENTIAL PRESSURE GAUGES.						
3.	PRIOR TO FABRICATION OF MATING PIPE ASSEMBLIES, VERIFY EQUIPMENT CONNECTIONS FOR SIZE, LOCATION AND TYPE IN ACCORDANCE WITH MANUFACTURER CERTIFIED DRAWINGS, OR DIRECTLY FROM THE EQUIPMENT. TEMPLATE BOLTING PATTERNS AND CONNECTIONS AS REQUIRED.	12.	DRIP PANS WITH UP-TURNED EDGES SHALL BE PROVIDED BENEATH ALL FILTERS. EACH DRIP PAN SHALL BE FITTED WITH A LOW POINT DRAIN PORT.						
4.	PIPING SHALL BE ROUTED AS DIRECTLY AS POSSIBLE WITH A MINIMUM NUMBER OF BENDS AND FITTINGS.	13.	REMOTE FUEL OIL SUPPLY SHUT OFF REACH RODS SHALL TERMINATE AT HANDWHEELS ON THE MAIN DECK BEHIND THE PILOT HOUSE						
5.	DO NOT ROUTE PIPING CONTAINING FUEL OIL NEAR ANY ELECTRICAL DEVICES OR EQUIPMENT. DO NOT LOCATE TAKEDOWN JOINTS AROUND, NEAR, OR OVER ELECTRICAL EQUIPMENT. ROUTE ALL FUEL OIL PIPING AT LEAST 18 INCHES AWAY FROM ANY SURFACE THAT NORMALLY HAS AN OPERATING TEMPERATURE OF 450°F OR GREATER EQUIPMENT	14.	FUEL SYSTEM PIPING SHALL BE CLEANED, FLUSHED AND HYDROSTATICALLY TESTED PRIOR TO BEING PLACED INTO SERVICE.						
6.	TAKEDOWN JOINTS SHALL BE PROVIDED AT INTERVALS WHICH ALLOW DISASSEMBLY AND REMOVAL OF PIPING AND EQUIPMENT WITHOUT REQUIRING REMOVAL OR MODIFICATION OF PERMANENT STRUCTURE.	15.	PIPE THREAD SEALING TAPE, GALVANIZED PIPE, AND GALVANIZED FITTINGS SHALL NOT BE USED.						
7.	PIPING SHALL BE ADEQUATELY SUPPORTED BY HANGERS IN ACCORDANCE WITH ASTM F708. HANGERS SHALL BE ATTACHED TO THE PIPE WITH BOLTED CLAMPS AND WELDED TO THE BASIC SHIP STRUCTURE. HANGERS SHALL NOT BE ATTACHED BY WELDING DIRECTLY TO PIPES.								
8.	WHERE PIPES PENETRATE TANK BOUNDARIES, BULKHEADS, OR DECKS HEAVY WEIGHT SPOOL PIECES OR REINFORCING PENETRATION FITTINGS SHALL BE USED. SEE DETAIL 1-1A								
9.	FLEXIBLE HOSE ASSEMBLIES SHALL MEET THE REQUIREMENTS OF 46 CFR 182.720 AND BE APPROVED FOR FUEL OIL SERVICE. END FITTINGS SHALL MEET SAE J1475. HOSE ASSEMBLIES SHALL NOT BE LESS THAN 9" IN LENGTH NOR MORE THAN 30" IN LENGTH.								

PROFESSIONAL ENGINEER

This document discloses neither to which DeJong & Lebet, Incorporated has proprietary rights. Neither shall we, nor our successors, assign or license any right to reproduce, distribute or use in any manner the drawings in whole or in part or any information contained herein, except by written permission, or written agreement with DeJong & Lebet, Incorporated.

In the event of a purchase of this document the purchaser is authorized to make copies for use on more than one date in order to benefit, unless otherwise agreed to in writing by DeJong & Lebet, Incorporated.

© 2018 by DeJong & Lebet, Inc.

DeJong & Lebet, Inc.
Naval Architects
Marine Engineers
Consultants
Surveyors

1734 Emerson Street
Jacksonville, Florida 32207
www.dejonglebet.com

Phone: (904) 399-1873
Fax: (904) 399-1522
info@dejonglebet.com

Title: 45.5'x20'x6.5' NCDOT PUSHBOAT

FUEL OIL

Dwg. No. 17-1393-261 Alt. No. 0
Sht. 1 of 3

Drawn By: JAH Date: SEPT 28, 2018
Checked By: Date:
App'd By: Scale: NONE
ABS App'l: USCG App'l:

ANSI-D (24"x36")

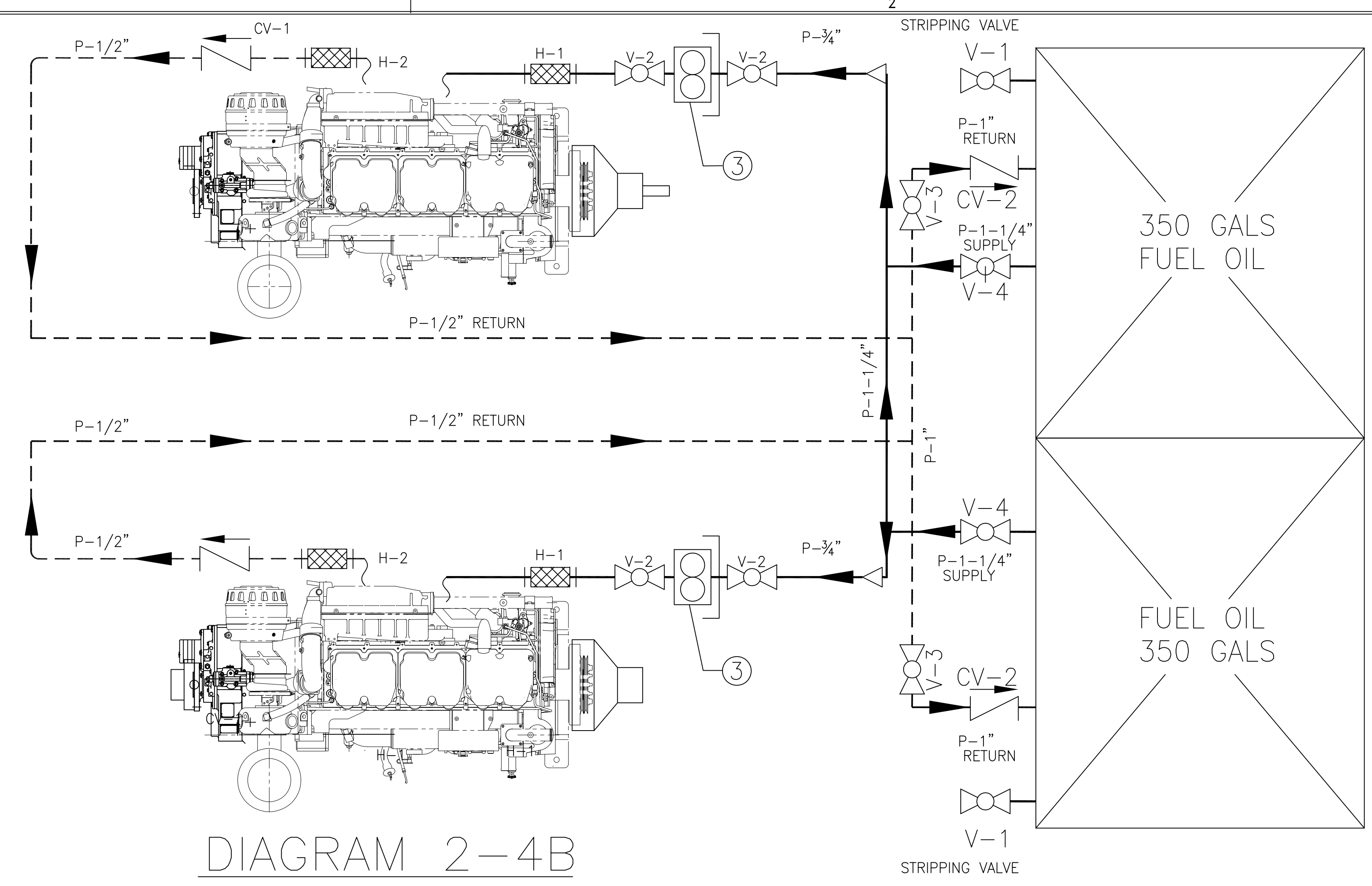
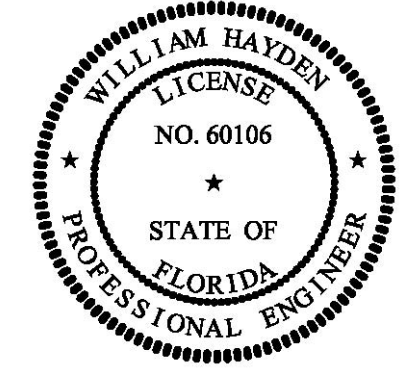


DIAGRAM 2-4B
FUEL OIL SERVICE SYSTEM SCHEMATIC

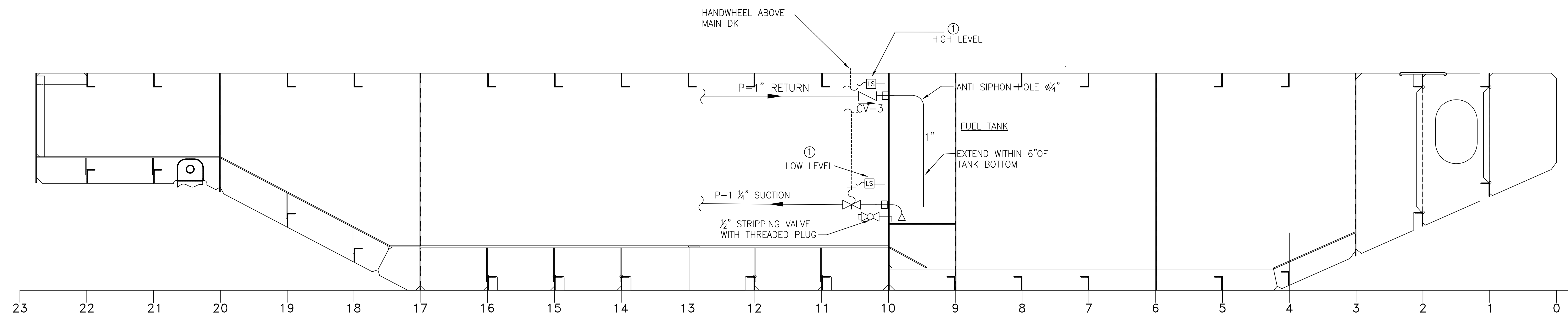


DIAGRAM 2-4C
FUEL OIL TANK SCHEMATIC

- GENERAL NOTES -		- GENERAL NOTES -		- ALTERATIONS -		- RESERVATIONS -		- REFERENCES -	
NO.	DESCRIPTION	NO.	DESCRIPTION	NO.	DESCRIPTION	NO.	DESCRIPTION	NO.	DESCRIPTION
1.	PIPING SYSTEM MATERIALS, INSTALLATION, AND WORKMANSHIP SHALL BE IN ACCORDANCE WITH 46 CFR SUBCHAPTER M (TOWING VESSELS).	10.	FUEL OIL SUPPLY SUCTION BELLSOUTH AREA SHALL BE AT LEAST 1 1/2 TIMES THE SUCTION PIPE INTERNAL AREA.					1.	DWG 1393-506 FILLS, VENTS & SOUNDS
2.	THIS DRAWING IS DIAGRAMMATIC ONLY AND DOES NOT REPRESENT A COMPLETE DETAILED DESIGN. THE CONTRACTOR SHALL DEVELOP FULLY A DETAILED DESIGN THAT PROVIDES A FUNCTIONAL ARRANGEMENT SUITABLE FOR INSTALLATION.	11.	FUEL FILTERS SHALL BE USCG APPROVED WITH METAL BOWLS FILTERS SHALL BE FITTED WITH BALL VALVES FOR FILTER ISOLATION WHILE THE ENGINE IS RUNNING, WATER PROBES, AND DIFFERENTIAL PRESSURE GAUGES.						
3.	PRIOR TO FABRICATION OF MATING PIPE ASSEMBLIES, VERIFY EQUIPMENT CONNECTIONS FOR SIZE, LOCATION AND TYPE IN ACCORDANCE WITH MANUFACTURER CERTIFIED DRAWINGS, OR DIRECTLY FROM THE EQUIPMENT. TEMPLATE BOLTING PATTERNS AND CONNECTIONS AS REQUIRED.	12.	DRIP PANS WITH UP-TURNED EDGES SHALL BE PROVIDED BENEATH ALL FILTERS. EACH DRIP PAN SHALL BE FITTED WITH A LOW POINT DRAIN PORT.						
4.	PIPING SHALL BE ROUTED AS DIRECTLY AS POSSIBLE WITH A MINIMUM NUMBER OF BENDS AND FITTINGS.	13.	REMOTE FUEL OIL SUPPLY SHUT OFF REACH RODS SHALL TERMINATE AT HANDWHEELS ON THE MAIN DECK BEHIND THE PILOT HOUSE						
5.	DO NOT ROUTE PIPING CONTAINING FUEL OIL NEAR ANY ELECTRICAL DEVICES OR EQUIPMENT. DO NOT LOCATE TAKE-DOWN JOINTS AROUND, NEAR, OR OVER ELECTRICAL EQUIPMENT. ROUTE ALL FUEL OIL PIPING AT LEAST 18 INCHES AWAY FROM ANY SURFACE THAT NORMALLY HAS AN OPERATING TEMPERATURE OF 450°F OR GREATER EQUIPMENT	14.	FUEL SYSTEM PIPING SHALL BE CLEANED, FLUSHED AND HYDROSTATICALLY TESTED PRIOR TO BEING PLACED INTO SERVICE.						
6.	TAKE-DOWN JOINTS SHALL BE PROVIDED AT INTERVALS WHICH ALLOW DISASSEMBLY AND REMOVAL OF PIPING AND EQUIPMENT WITHOUT REQUIRING REMOVAL OR MODIFICATION OF PERMANENT STRUCTURE.	15.	PIPE THREAD SEALING TAPE, GALVANIZED PIPE, AND GALVANIZED FITTINGS SHALL NOT BE USED.						
7.	PIPING SHALL BE ADEQUATELY SUPPORTED BY HANGERS IN ACCORDANCE WITH ASTM F708. HANGERS SHALL BE ATTACHED TO THE PIPE WITH BOLTED CLAMPS AND WELDED TO THE BASIC SHIP STRUCTURE. HANGERS SHALL NOT BE ATTACHED BY WELDING DIRECTLY TO PIPES.								
8.	WHERE PIPES PENETRATE TANK BOUNDARIES, BULKHEADS, OR DECKS HEAVY WEIGHT SPOOL PIECES OR REINFORCING PENETRATION FITTINGS SHALL BE USED. SEE DETAIL 1-1A								
9.	FLEXIBLE HOSE ASSEMBLIES SHALL MEET THE REQUIREMENTS OF 46 CFR 182.720 AND BE APPROVED FOR FUEL OIL SERVICE. END FITTINGS SHALL MEET SAE J1475. HOSE ASSEMBLIES SHALL NOT BE LESS THAN 9" IN LENGTH NOR MORE THAN 30" IN LENGTH.								

PROPRIETARY NOTICE
This document discloses matter to which DeJong & Lebet, Incorporated has proprietary rights. Neither reveal nor permit third parties or divulge any part in reproduction, disclosure or use in any manner this drawing in whole or in part or any information contained herein, except by written permission, or written agreement with DeJong & Lebet, Incorporated.
In the event of a purchase of this document the purchaser is authorized to make a copy for use on one date in each month, which duration shall be in writing by DeJong & Lebet, Incorporated.
© 2018 by DeJong & Lebet, Inc.

DeJong & Lebet, Inc.
Naval Architects
Marine Engineers
Consultants
Surveyors
1734 Emerson Street
Jacksonville, Florida 32207
www.dejonglebet.com
Phone: (904) 399-1673
Fax: (904) 399-1522
info@dejonglebet.com

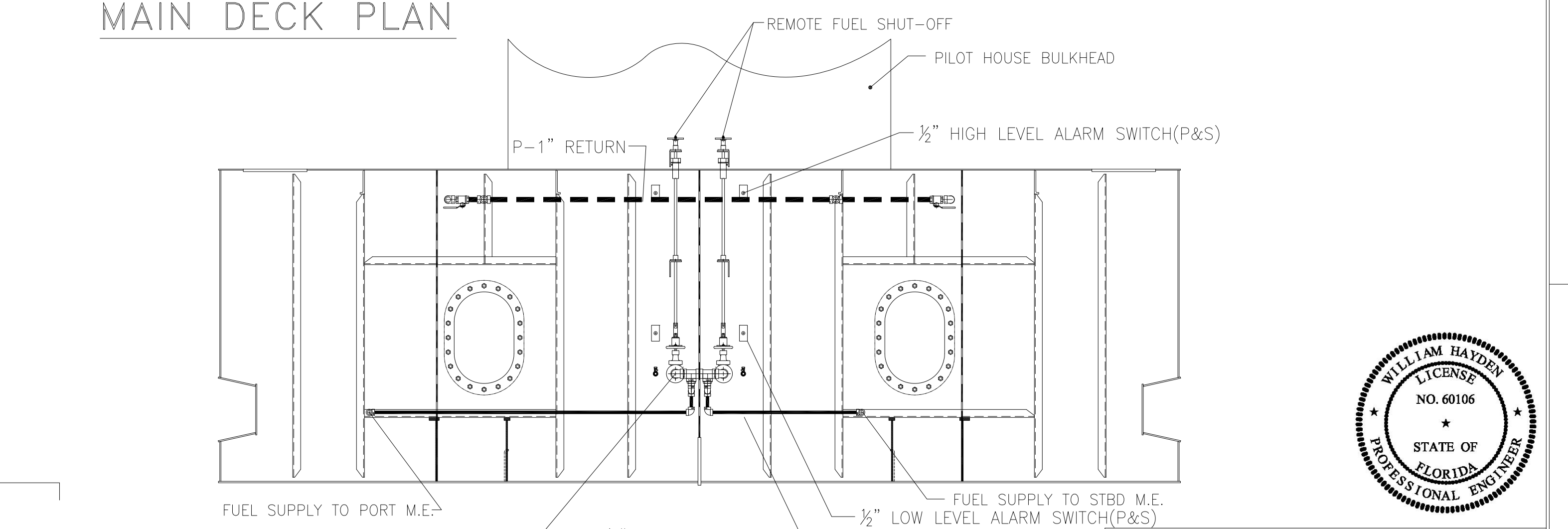
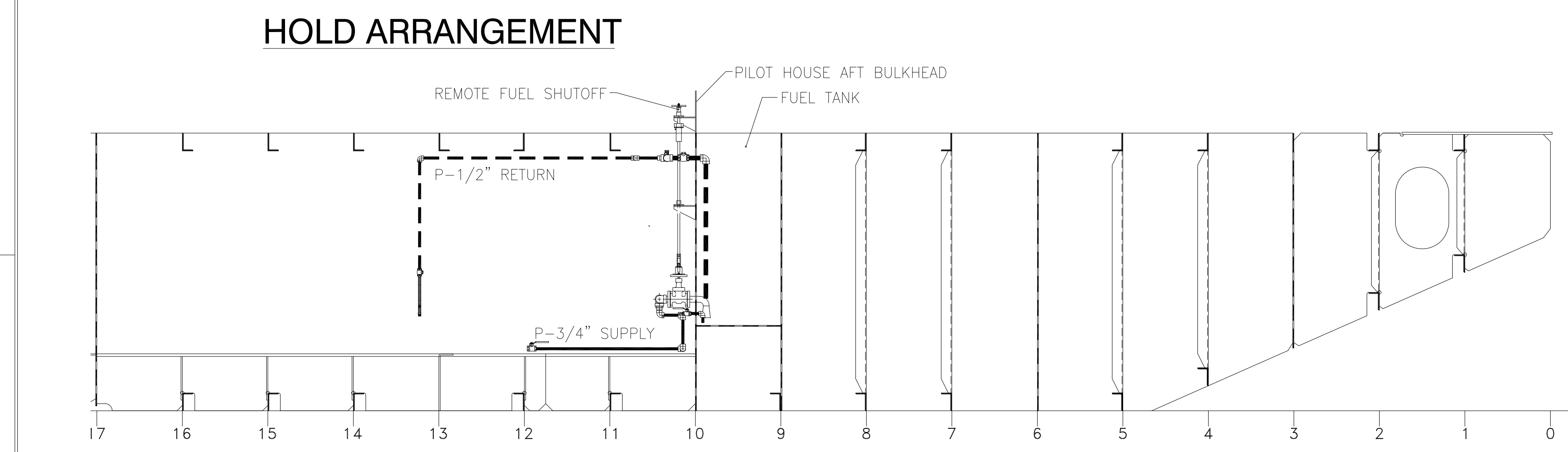
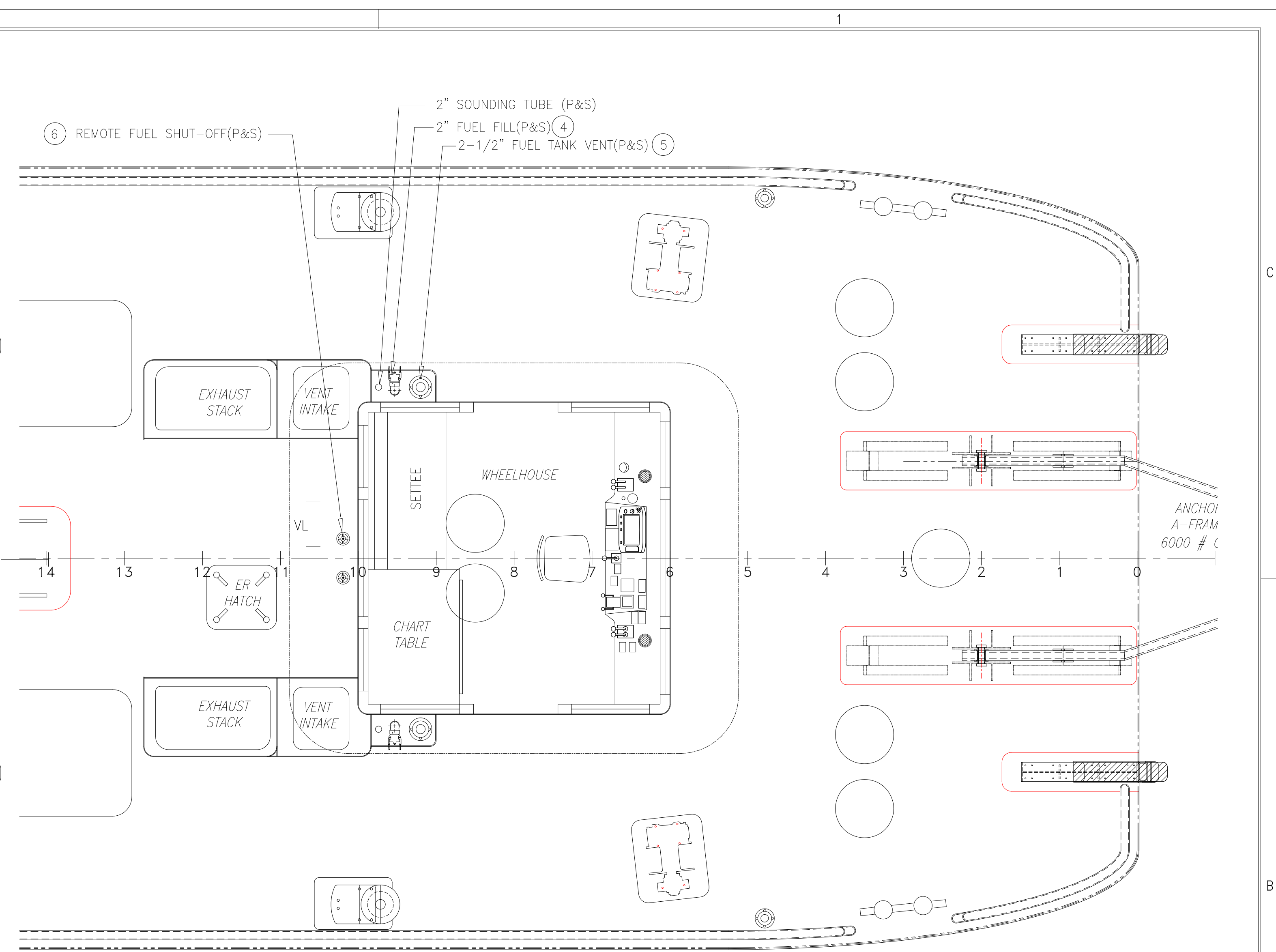
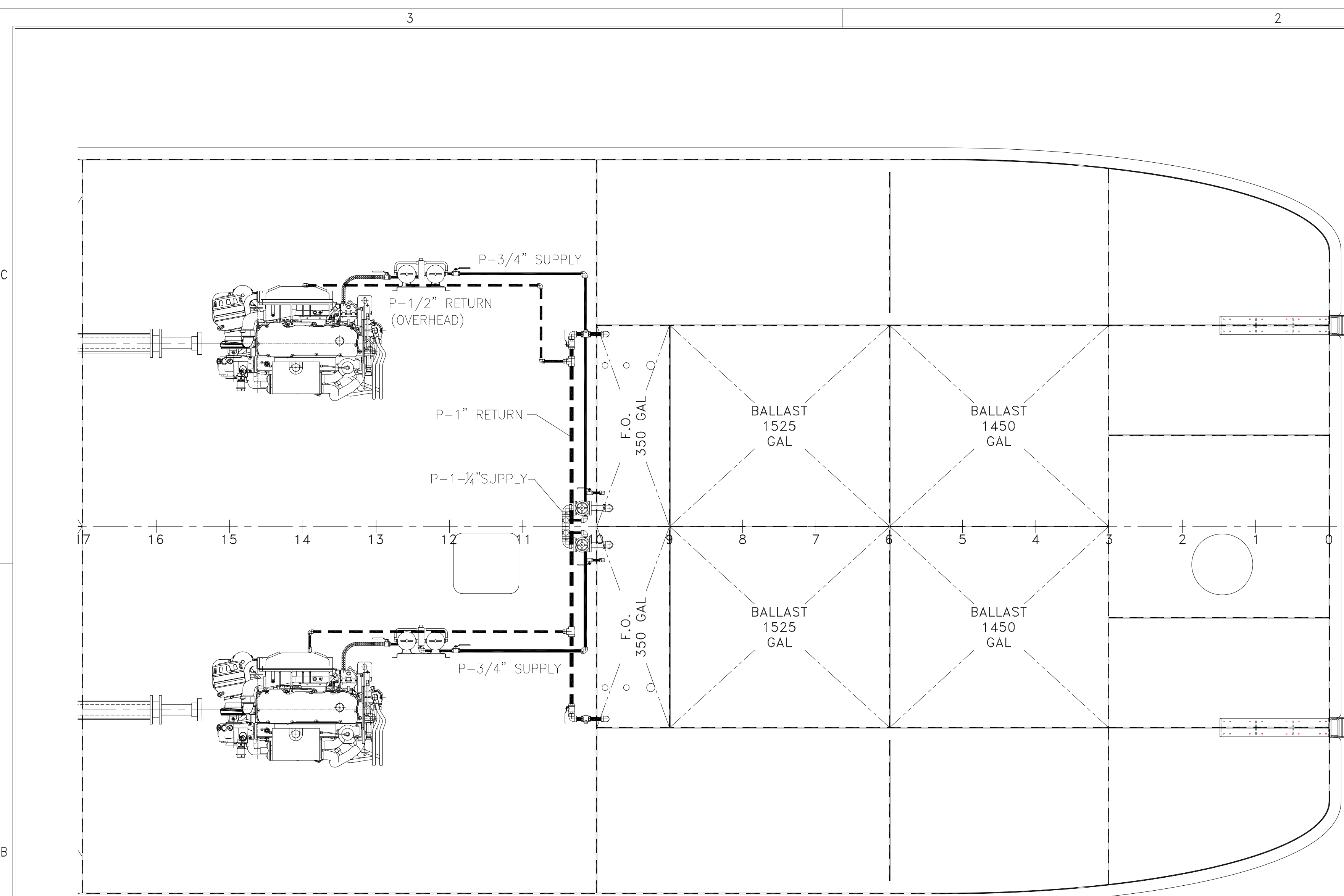
Title: 45.5'x20'x6.5' NCDOT PUSHBOAT

FUEL OIL

Dwg. No. **17-1393-261** Alt. No. 0
Sht. 2 of 3

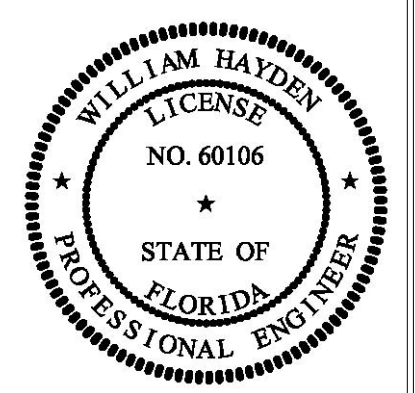
Drawn By: **JAH** Date: **SEPT 23, 2018**
Checked By: _____ Date: _____
App'd By: _____ Scale: **NONE**
ABS App'l: _____ USCG App'l: _____

- DRAWING SUBMITTALS -



FUEL OIL SERVICE SYSTEM ARRANGEMENT

-- GENERAL NOTES --		-- GENERAL NOTES --		-- ALTERATIONS --		-- RESERVATIONS --		-- REFERENCES --	
NO.	DESCRIPTION	NO.	DESCRIPTION	NO.	DESCRIPTION	DATE	BY NO.	NO.	DESCRIPTION
1.	PIPING SYSTEM MATERIALS, INSTALLATION, AND WORKMANSHIP SHALL BE IN ACCORDANCE 46 CFR SUBCHAPTER M (TOWING VESSELS).	10.	FUEL OIL SUPPLY SUCTION BELLSOUTH AREA SHALL BE AT LEAST 1 1/2 TIMES THE SUCTION PIPE INTERNAL AREA.					1.	DWG 1393-506 FILLS, VENTS & SOUNDS
2.	THIS DRAWING IS DIAGRAMMATIC ONLY AND DOES NOT REPRESENT A COMPLETE DETAILED DESIGN. THE CONTRACTOR SHALL DEVELOP FULLY A DETAILED DESIGN THAT PROVIDES A FUNCTIONAL ARRANGEMENT SUITABLE FOR INSTALLATION.	11.	FUEL FILTERS SHALL BE USCG APPROVED WITH METAL BOWLS FILTERS SHALL BE FITTED WITH BALL VALVES FOR FILTER ISOLATION WHILE THE ENGINE IS RUNNING, WATER PROBES, AND DIFFERENTIAL PRESSURE GAUGES.						
3.	PRIOR TO FABRICATION OF MATING PIPE ASSEMBLIES, VERIFY EQUIPMENT CONNECTIONS FOR SIZE, LOCATION AND TYPE IN ACCORDANCE WITH MANUFACTURER CERTIFIED DRAWINGS, OR DIRECTLY FROM THE EQUIPMENT. TEMPLATE BOLTING PATTERNS AND CONNECTIONS AS REQUIRED.	12.	DRIP PANS WITH UP-TURNED EDGES SHALL BE PROVIDED BENEATH ALL FILTERS. EACH DRIP PAN SHALL BE FITTED WITH A LOW POINT DRAIN PORT.						
4.	PIPING SHALL BE ROUTED AS DIRECTLY AS POSSIBLE WITH A MINIMUM NUMBER OF BENDS AND FITTINGS.	13.	REMOTE FUEL OIL SUPPLY SHUT OFF REACH RODS SHALL TERMINATE AT HANDWHEELS ON THE MAIN DECK BEHIND THE PILOT HOUSE						
5.	DO NOT ROUTE PIPING CONTAINING FUEL OIL NEAR ANY ELECTRICAL DEVICES OR EQUIPMENT. DO NOT LOCATE TAKEDOWN JOINTS AROUND, NEAR, OR OVER ELECTRICAL EQUIPMENT. ROUTE ALL FUEL OIL PIPING AT LEAST 18 INCHES AWAY FROM ANY SURFACE THAT NORMALLY HAS AN OPERATING TEMPERATURE OF 450°F OR GREATER EQUIPMENT	14.	FUEL SYSTEM PIPING SHALL BE CLEANED, FLUSHED AND HYDROSTATICALLY TESTED PRIOR TO BEING PLACED INTO SERVICE.						
6.	TAKEDOWN JOINTS SHALL BE PROVIDED AT INTERVALS WHICH ALLOW DISASSEMBLY AND REMOVAL OF PIPING AND EQUIPMENT WITHOUT REQUIRING REMOVAL OR MODIFICATION OF PERMANENT STRUCTURE.	15.	PIPE THERM SEALING TAPE, GALVANIZED PIPE, AND GALVANIZED FITTINGS SHALL NOT BE USED.						
7.	PIPING SHALL BE ADEQUATELY SUPPORTED BY HANGERS IN ACCORDANCE WITH ASTM F708. HANGERS SHALL BE ATTACHED TO THE PIPE WITH BOLTED CLAMPS AND WELDED TO THE BASIC SHIP STRUCTURE. HANGERS SHALL NOT BE ATTACHED BY WELDING DIRECTLY TO PIPES.								
8.	WHERE PIPES PENETRATE TANK BOUNDARIES, BULKHEADS, OR DECKS HEAVY WEIGHT SPOOL PIECES OR REINFORCING PENETRATION FITTINGS SHALL BE USED. SEE DETAIL 1-1A								
9.	FLEXIBLE HOSE ASSEMBLIES SHALL MEET THE REQUIREMENTS OF 46 CFR 182.720 AND BE APPROVED FOR FUEL OIL SERVICE. END FITTINGS SHALL MEET SAE J1475. HOSE ASSEMBLIES SHALL NOT BE LESS THAN 9" IN LENGTH NOR MORE THAN 30" IN LENGTH.								



DeJong & Lebet, Inc.
 Naval Architects
 Marine Engineers
 Consultants
 Surveyors

1714 Emerson Street
 Jacksonville, Florida 32207
 www.dejongandlebet.com

Phone: (904) 399-3673
 Fax: (904) 399-1522
 info@dejongandlebet.com

PROJECT NO. 17-1372-261
 TITLE: 45.5'x20'x6.5' NCDOT PUSHBOAT

FUEL OIL

Dwg. No. 17-1372-261
 Alt. No. 0
 Sh. 3 of 3

Drawn By: JAH
 Checked By:
 App'd By:
 ABS App'l:

Date: SEPTEMBER 28, 2018
 Scale: NONE
 USCG App'l: