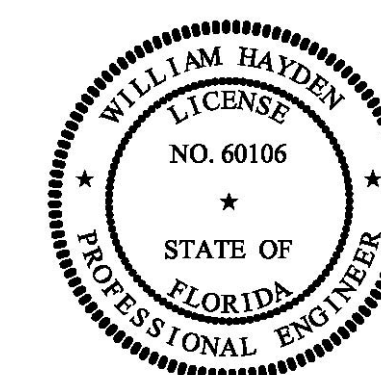


BILL OF MATERIALS

#	QTY.	SERVICE	TYPE	MAKE/MODEL	COMMENTS
①	2	PROPELLER SHAFT	3" DIA. SHAFT	3" DIA. AQUAMET 17	
②	2	PROPELLER SHAFT	COMPANION FLANGE	TWIN DISC SUPPLIED W/ GEARS	
③	2	PACKING GLAND	3" DIAMETER INFLATABLE PACKING GLAND	WARTSILA PSE STYLE	DEEP SEA SEALS. LTD
④	2	STERN TUBE	3" ID X 12" LENGTH BRASS SLEEVE CUTLESS BEARINGS	DURAMAX JOHNSON #870762101-DARE	OR EQUAL
⑤	2	PROPELLERS	36" DIA. 28" PITCH 4-BLADE .80 DAR WORKHORSE STYLE PROPELLER-BRONZE OR STAINLESS	DURAMAX JOHNSON #870762101-DARE	HS MARINE
⑥	2 SETS	PROPELLER SHAFT	PROPELLER LOCK NUT & JAM NUT		



PROPRIETARY RIGHTS
 This document discloses matter in which DeJong & Lebet, Incorporated has proprietary rights. Neither we nor our possession transfer authors or trustees any right to reproduce, disclose or use in any manner this document in whole or in part or any substantial portion thereof, except by written permission, or written agreement with DeJong & Lebet, Incorporated.
 In the event of a purchase of this document the purchaser is authorized to construct no more than one device to accord herewith, unless otherwise agreed to in writing by DeJong & Lebet, Incorporated.
 © 2018 by DeJong & Lebet, Inc.

DeJong & Lebet, Inc.
 Naval Architects
 Marine Engineers
 Consultants
 Surveyors

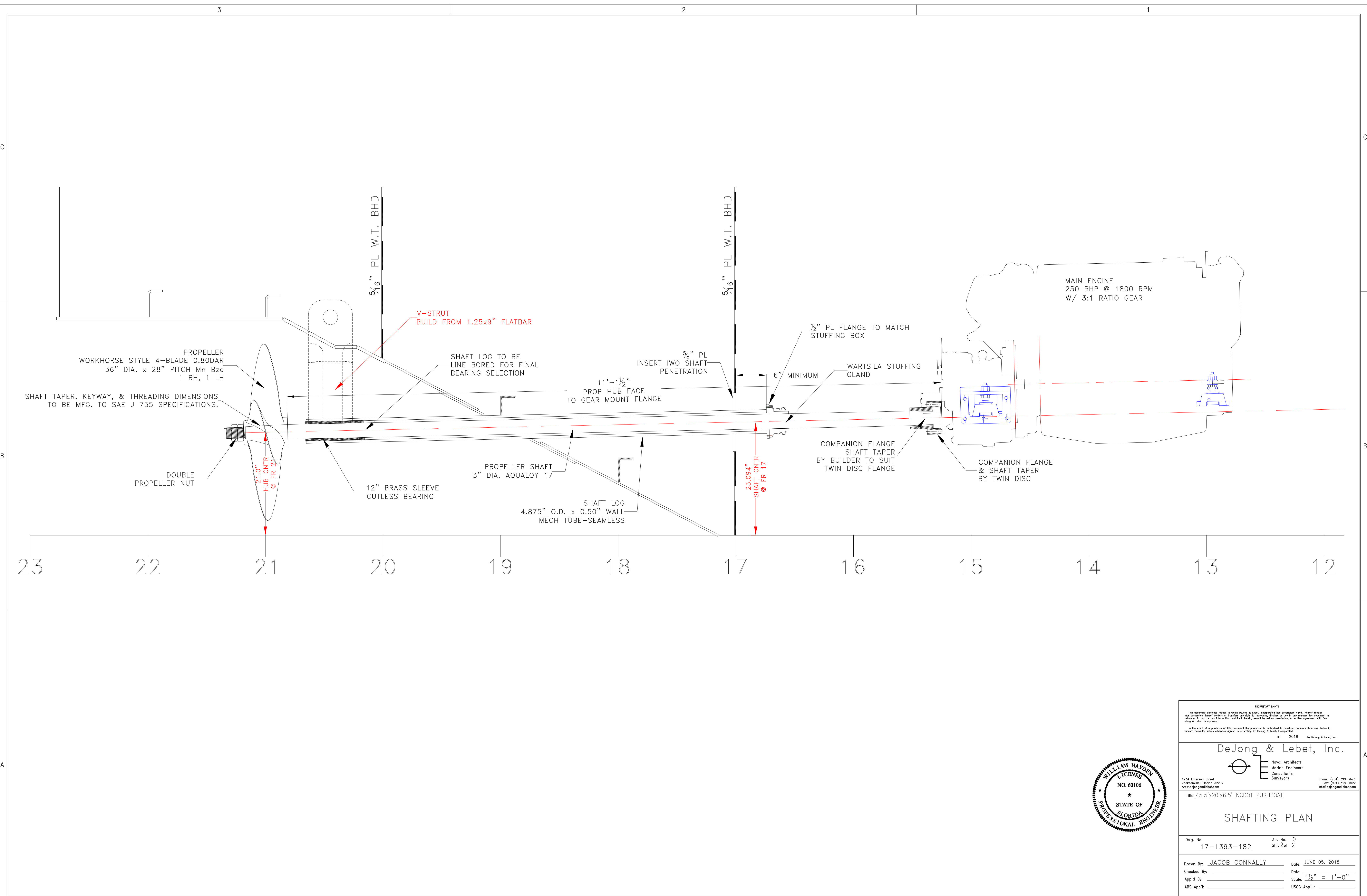
1724 Emerson Street
 Jacksonville, Florida 32207
 www.dejongandlebet.com
 Phone: (904) 399-3473
 Fax: (904) 399-1522
 info@dejongandlebet.com

Title: 45.5'x20'x6.5' NCDOT PUSHBOAT

SHAFTING PLAN
 -BOM-

Dwg. No. 17-1393-182 Alt. No. 0
 Sh. 1 of 2

Drawn By: JACOB CONNALLY Date: JUNE 05, 2018
 Checked By: _____ Date: _____
 App'd By: _____ Scale: _____
 ABS App'l: _____ USCG App'l: _____

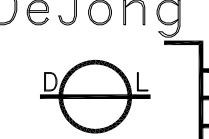


PROPRIETARY RIGHTS

This document discloses matter in which DeJong & Lebet, Incorporated has proprietary rights. Neither matter nor possession thereof nor the right to reproduce, disclose or use in any manner this document in whole or in part or any information contained herein, shall be either permitted, or written agreement with DeJong & Lebet, Incorporated.

In the event of a purchase of this document the purchaser is authorized to construct no more than one device in accord herewith, unless otherwise agreed to in writing by DeJong & Lebet, Incorporated.

© 2018 by DeJong & Lebet, Inc.



DeJong & Lebet, Inc.
 Naval Architects
 Marine Engineers
 Consultants
 Surveyors

1724 Emerson Street
 Jacksonville, Florida 32207
 www.dejongandlebet.com

Phone: (904) 399-3433
 Fax: (904) 399-1522
 info@dejongandlebet.com

Title: 45.5'x20'x6.5' NCDOT PUSHBOAT

SHAFTING PLAN

Dwg. No. 17-1393-182	Alt. No. 0 Sht. 2 of 2
Drawn By: JACOB CONNALLY	Date: JUNE 05, 2018
Checked By: _____	Date: _____
App'd By: _____	Scale: 1 1/2" = 1'-0"
ABS App'l: _____	USCG App'l: _____

