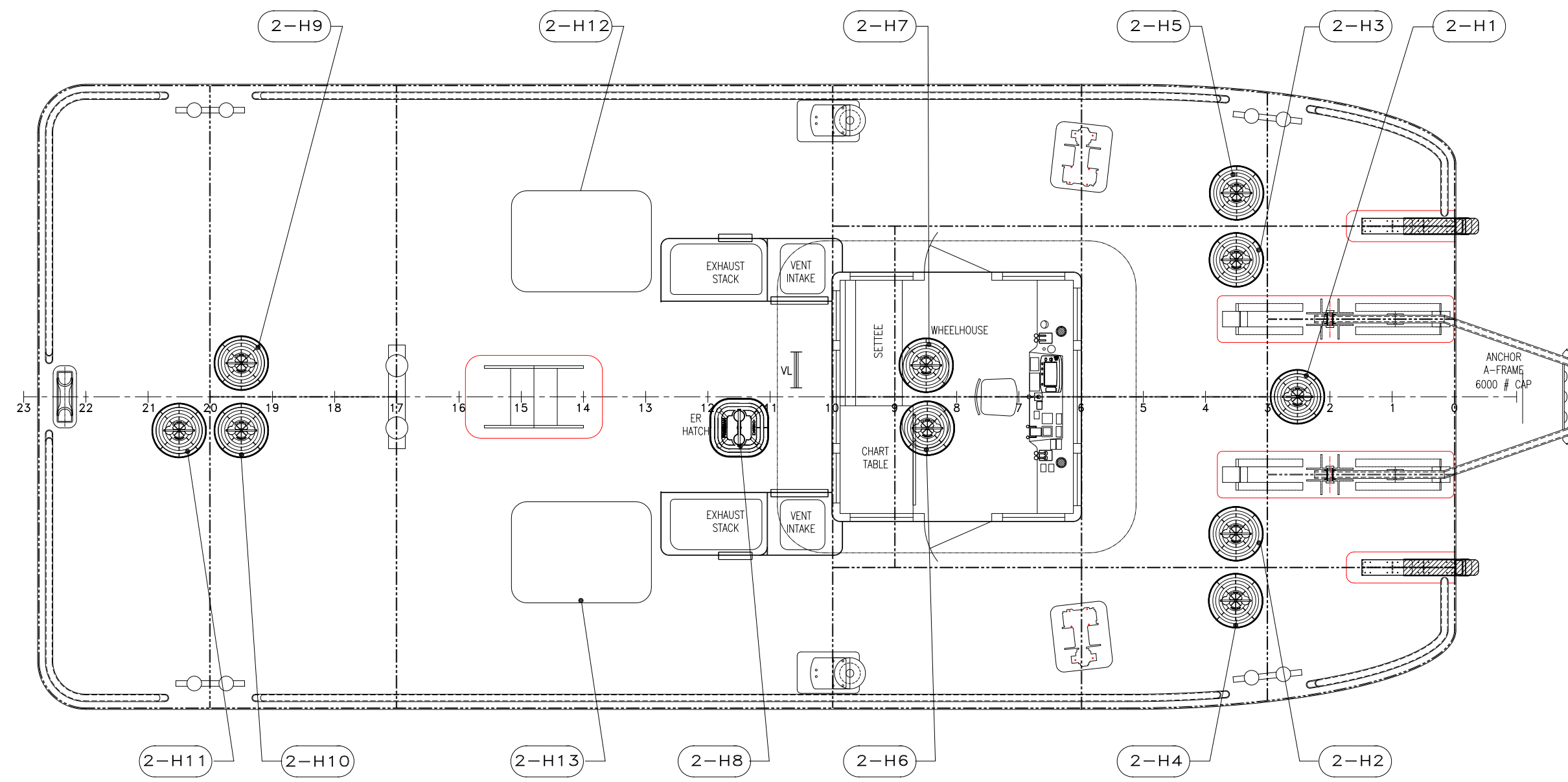
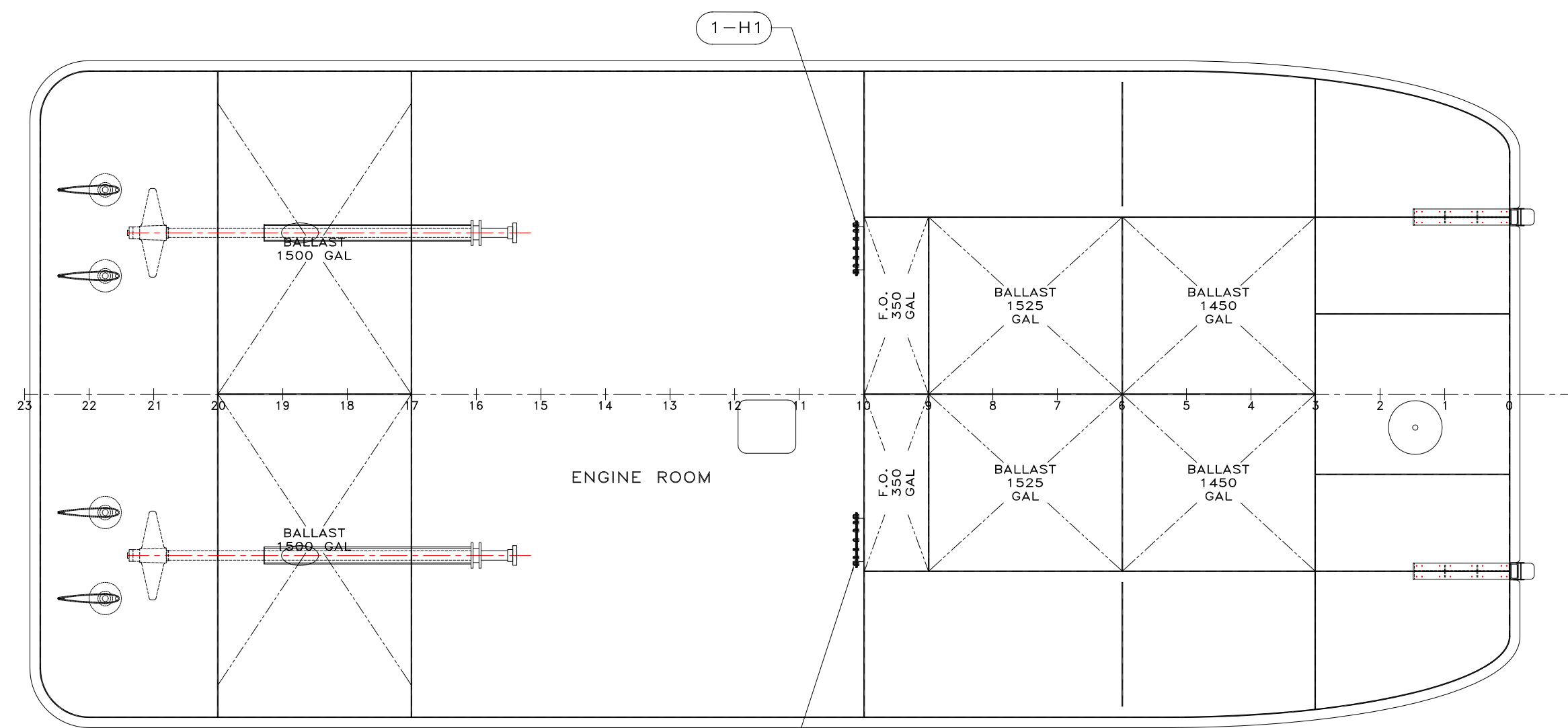


OUTBOARD PROFILE



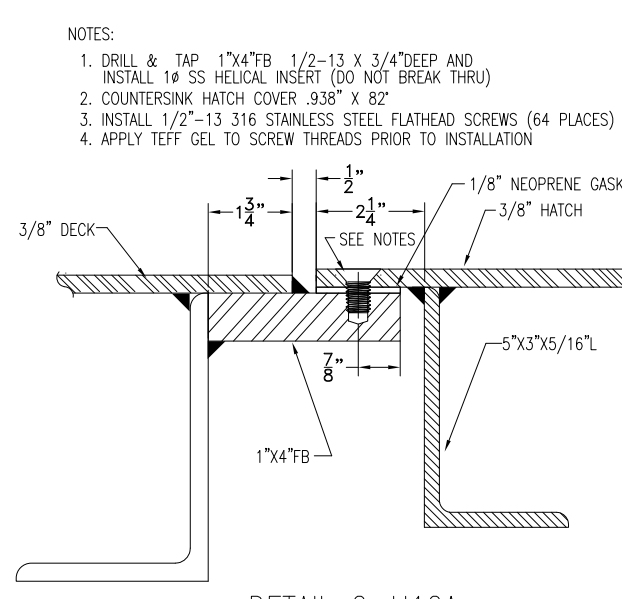
MAIN DECK



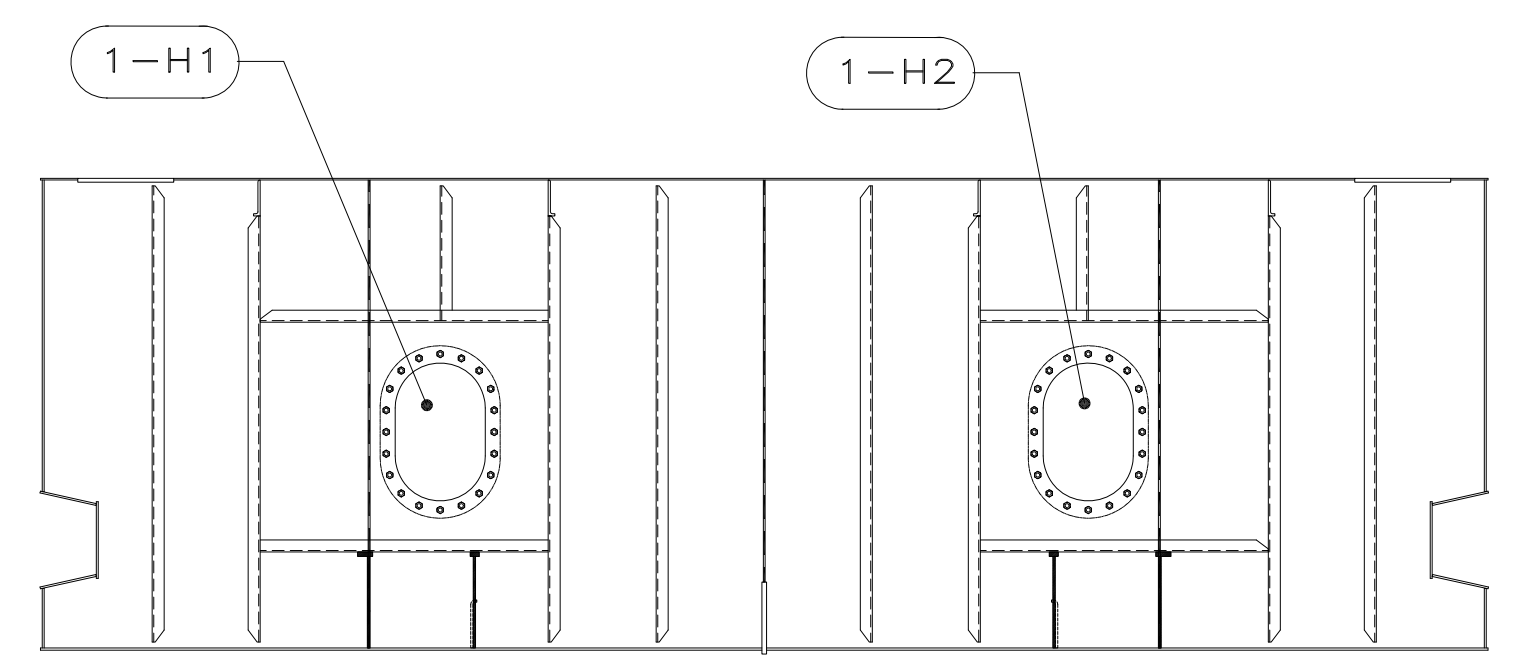
HOLD

HATCH SCHEDULE

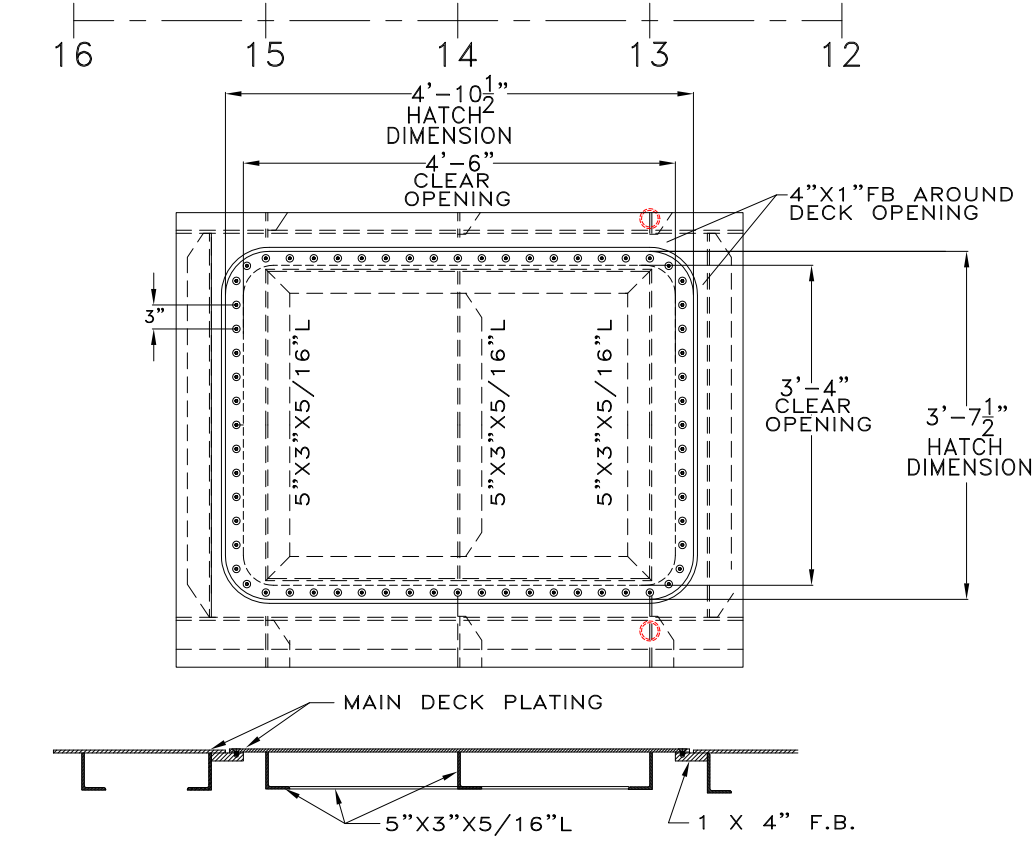
HOLD									
ITEM	SIZE	DESCRIPTION	COMPARTMENT	LOCATION	PART NUMBER	MANUFACTURER	MATERIAL	COAMING	REMARKS
1-H1	15"X23"	HATCH, RAISED, MULTIBOLT, OILTIGHT	ENGINE ROOM	F.O. TANK, STBD	302	FREEMAN	STEEL	2.5"	
1-H2	15"X23"	HATCH, RAISED, MULTIBOLT, OILTIGHT	ENGINE ROOM	F.O. TANK, STBD	302	FREEMAN	STEEL	2.5"	
MAIN DECK									
2-H1	Ø18"	HATCH, FLUSH, WATERTIGHT, SINGLE BOLT	FOREPEAK	MAIN DECK BOW	2105-0003-0001	FREEMAN	ALUM./STEEL		
2-H2	Ø18"	HATCH, WATERTIGHT, Q.A. . STEEL RING	BALLAST #1S TANK	MAIN DECK FWD STBD	2105-0003-0001	FREEMAN	ALUM./STEEL		
2-H3	Ø18"	HATCH, WATERTIGHT, Q.A. . STEEL RING	BALLAST #1P TANK	MAIN DECK FWD PORT	2105-0003-0001	FREEMAN	ALUM./STEEL		
2-H4	Ø18"	HATCH, WATERTIGHT, Q.A. . STEEL RING	FWD STBD VOID	MAIN DECK FWD STBD	2105-0003-0001	FREEMAN	ALUM./STEEL		
2-H5	Ø18"	HATCH, WATERTIGHT, Q.A. . STEEL RING	FWD PORT VOID	MAIN DECK FWD PORT	2105-0003-0001	FREEMAN	ALUM./STEEL		
2-H6	Ø18"	HATCH, WATERTIGHT, Q.A. . STEEL RING	BALLAST #2S TANK	INSIDE WHEELHOUSE	2105-0003-0001	FREEMAN	ALUM./STEEL		
2-H7	Ø18"	HATCH, WATERTIGHT, Q.A. . STEEL RING	BALLAST #2P TANK	INSIDE WHEELHOUSE	2105-0003-0001	FREEMAN	ALUM./STEEL		
2-H8	20" SQUARE	HATCH, WATERTIGHT, Q.A. . STEEL RING	ENGINE ROOM ACCESS	BETWEEN STACKS	2422-0003	FREEMAN	ALUM./STEEL		
2-H9	Ø18"	HATCH, WATERTIGHT, Q.A. . STEEL RING	BALLAST #3P TANK	AFT DECK	2105-0003-0001	FREEMAN	ALUM./STEEL		
2-H10	Ø18"	HATCH, WATERTIGHT, Q.A. . STEEL RING	BALLAST #3P TANK	AFT DECK	2105-0003-0001	FREEMAN	ALUM./STEEL		
2-H11	Ø18"	HATCH, WATERTIGHT, Q.A. . STEEL RING	STEERING COMP. VOID	STERN DECK	2105-0003-0001	FREEMAN	ALUM./STEEL		
2-H12	Ø18"	HATCH, MAIN ENGINE PORT	ENGINE ROOM	AFT DECK			STEEL		SEE DETAIL 2-H12 & 2-H12A
2-H13	Ø18"	HATCH, MAIN ENGINE STBD	ENGINE ROOM	AFT DECK			STEEL		SEE DETAIL 2-H12 & 2-H12A



DETAIL 2-H12A
MAIN DECK ENGINE HATCHES
SCALE: 3" = 1'-0"



FRAME 10
FUEL TANK MANHOLES
SCALE: 3/8" = 1'-0"



DETAIL 2-H12
MAIN DECK HATCHES (2 EA)
SCALE: 1/2" = 1'-0"
MATERIAL: A36 STEEL

PROSPECTIVE RIGHTS
This document discloses matter in which DeJong & Lebet, Incorporated has proprietary rights. Neither receipt nor possession thereof confers or transfers any right to reproduce, disclose or use in any manner this document in whole or in part or any information contained herein, except by written permission, or written agreement with DeJong & Lebet, Incorporated.
In the event of a purchase of this document the purchaser is authorized to construct no more than one device in accord herewith, unless otherwise signed to it, writing by DeJong & Lebet, Incorporated.
© 2018 by DeJong & Lebet, Inc.

DeJong & Lebet, Inc.
Naval Architects
Marine Engineers
Consultants
Surveyors
1734 Emerson Street
Jacksonville, Florida 32207
www.dejongandlebet.com
Phone: (904) 599-3673
Fax: (904) 599-1522
Info@dejongandlebet.com

STATE OF FLORIDA
WILLIAM HAYDEN
LICENSE NO. 60106
PROFESSIONAL ENGINEER

Title: 45.5'x20'x6.5' NCDOT PUSHBOAT

HATCHES & MANHOLES

Dwg. No. 17-1393-167
Alt. No. 0
Sht. 1 of 1

Drawn By: JACOB CONNALLY Date: JUNE 05, 2018
Checked By: _____ Date: _____
App'd By: _____ Scale: AS NOTED
ABS App'l: _____ USCG App'l: _____