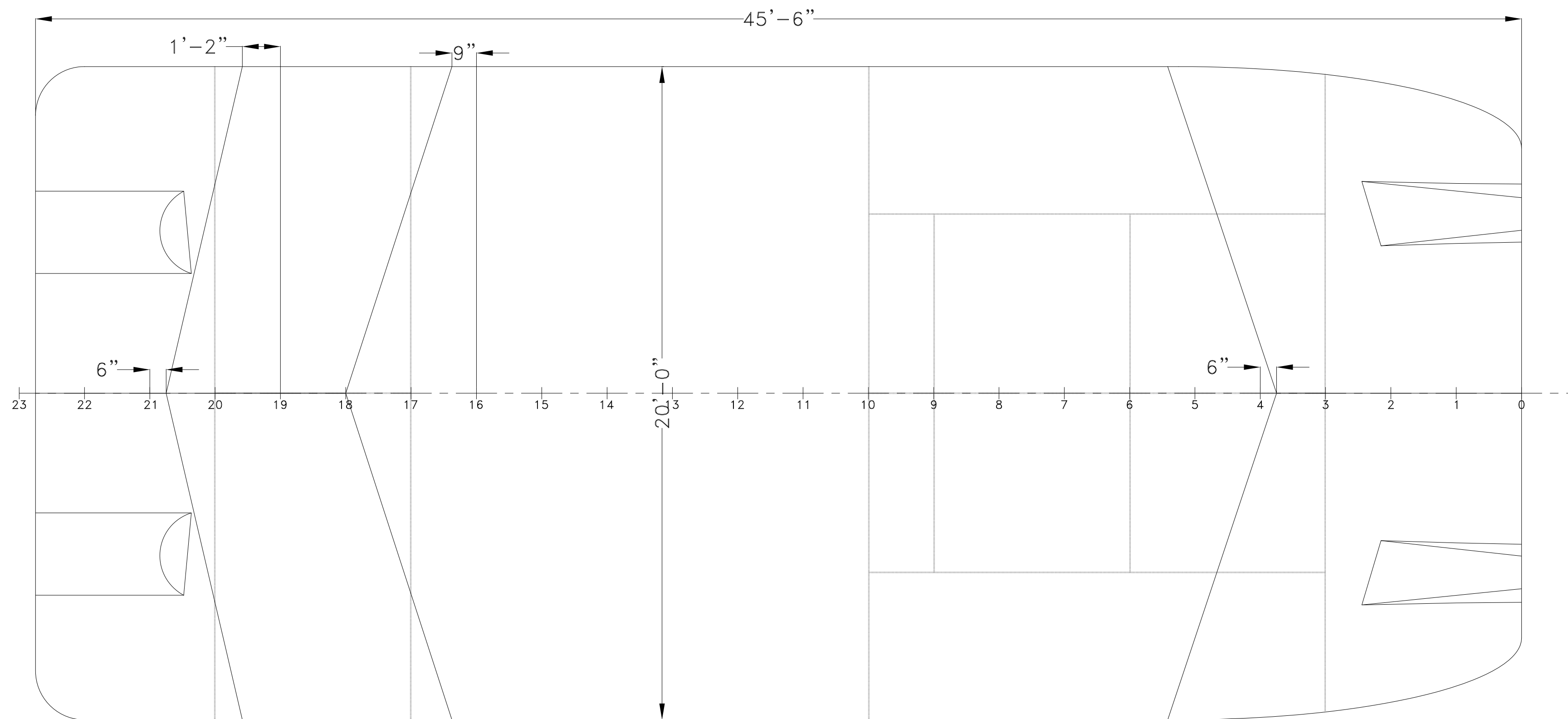


TABLE OF OFFSETS (FEET-INCHES-EIGHTHS)	POINT 1		POINT 2		POINT 3		POINT 4		POINT 5		POINT 6		POINT 7		POINT 8		POINT 9	
	WIDTH	HEIGHT	WIDTH	HEIGHT	WIDTH	HEIGHT	WIDTH	HEIGHT	WIDTH	HEIGHT	WIDTH	HEIGHT	WIDTH	HEIGHT	WIDTH	HEIGHT	WIDTH	HEIGHT
FRAME 0	0-0-0	3-3-0	4-7-4	4-0-6+	4-11-7	2-0-0	5-11-6+	2-0-0	6-4-6+	4-4-2+	7-6-0	4-6-5	7-6-0	6-6-0	0-0-0	6-6-0		
FRAME 1	0-0-0	2-4-5	4-7-0	3-0-4+	4-9-1+	2-0-0	6-2-2	2-0-0	6-5-0+	3-3-6	8-11-5	3-8-1+	8-11-5	6-6-0	0-0-0	6-6-0		
FRAME 2	0-0-0	1-6-1+	4-6-2	2-1-5	4-6-4+	2-0-0	6-4-5+	2-0-0	6-5-4+	2-4-7	9-5-4+	2-9-6+	9-5-4+	6-6-0	0-0-0	6-6-0		
FRAME 3	0-0-0	0-7-6+	9-9-1	1-11-3	9-9-1	6-6-0	0-0-0	6-6-0										
FRAME 4	0-0-0	0-0-0	1-6-0	0-0-0	9-11-1	1-1-0	9-11-1	6-6-0	0-0-0	6-6-0								
FRAME 5	0-0-0	0-0-0	7-6-0	0-0-0	10-0-0	0-2-5	10-0-0	1-0-0	9-3-0	1-2-0	9-3-0	2-7-0	10-0-0	2-9-0	10-0-0	6-6-0	0-0-0	6-6-0
FRAME 6	0-0-0	0-0-0	10-0-0	0-0-0	10-0-0	1-0-0	9-3-0	1-2-0	9-3-0	2-7-0	10-0-0	2-9-0	10-0-0	6-6-0	0-0-0	6-6-0		
FRAME 7	0-0-0	0-0-0	10-0-0	0-0-0	10-0-0	1-0-0	9-3-0	1-2-0	9-3-0	2-7-0	10-0-0	2-9-0	10-0-0	6-6-0	0-0-0	6-6-0		
FRAME 8	0-0-0	0-0-0	10-0-0	0-0-0	10-0-0	1-0-0	9-3-0	1-2-0	9-3-0	2-7-0	10-0-0	2-9-0	10-0-0	6-6-0	0-0-0	6-6-0		
FRAME 9	0-0-0	0-0-0	10-0-0	0-0-0	10-0-0	1-0-0	9-3-0	1-2-0	9-3-0	2-7-0	10-0-0	2-9-0	10-0-0	6-6-0	0-0-0	6-6-0		
FRAME 10	0-0-0	0-0-0	10-0-0	0-0-0	10-0-0	1-0-0	9-3-0	1-2-0	9-3-0	2-7-0	10-0-0	2-9-0	10-0-0	6-6-0	0-0-0	6-6-0		
FRAME 11	0-0-0	0-0-0	10-0-0	0-0-0	10-0-0	1-0-0	9-3-0	1-2-0	9-3-0	2-7-0	10-0-0	2-9-0	10-0-0	6-6-0	0-0-0	6-6-0		
FRAME 12	0-0-0	0-0-0	10-0-0	0-0-0	10-0-0	1-0-0	9-3-0	1-2-0	9-3-0	2-7-0	10-0-0	2-9-0	10-0-0	6-6-0	0-0-0	6-6-0		
FRAME 13	0-0-0	0-0-0	10-0-0	0-0-0	10-0-0	1-0-0	9-3-0	1-2-0	9-3-0	2-7-0	10-0-0	2-9-0	10-0-0	6-6-0	0-0-0	6-6-0		
FRAME 14	0-0-0	0-0-0	10-0-0	0-0-0	10-0-0	1-0-0	9-3-0	1-2-0	9-3-0	2-7-0	10-0-0	2-9-0	10-0-0	6-6-0	0-0-0	6-6-0		
FRAME 15	0-0-0	0-0-0	10-0-0	0-0-0	10-0-0	1-0-0	9-3-0	1-2-0	9-3-0	2-7-0	10-0-0	2-9-0	10-0-0	6-6-0	0-0-0	6-6-0		
FRAME 16	0-0-0	0-0-0	10-0-0	0-0-0	10-0-0	1-0-0	9-3-0	1-2-0	9-3-0	2-7-0	10-0-0	2-9-0	10-0-0	6-6-0	0-0-0	6-6-0		
FRAME 17	0-0-0	0-0-0	6-1-7	0-0-0	10-0-0	0-8-1+	10-0-0	6-6-0	0-0-0	6-6-0								
FRAME 18	0-0-0	0-0-0	10-0-0	1-9-5+	10-0-0	6-6-0	0-0-0	6-6-0										
FRAME 19	0-0-0	1-1-0+	10-0-0	2-9-6	10-0-0	6-6-0	0-0-0	6-6-0										
FRAME 20	0-0-0	2-2-1+	6-5-1	3-3-7	10-0-0	3-6-0	10-0-0	6-6-0	0-0-0	6-6-0								
FRAME 21	0-0-0	3-0-0	3-8-0	3-2-1+	4-4-0	3-7-0+	5-0-0	3-8-4	5-8-0	3-7-1	6-2-1+	3-3-5+	10-0-0	3-6-0	10-0-0	6-6-0	0-0-0	6-6-0
FRAME 22	0-0-0	3-0-0	3-8-0	3-2-1+	4-4-0	3-7-0+	5-0-0	3-8-4	5-8-0	3-7-1	6-2-1+	3-3-5+	10-0-0	3-6-0	10-0-0	6-6-0	0-0-0	6-6-0
TRANSOM @ 45'-6" AFT	0-0-0	3-0-0	3-8-0	3-2-1+	4-4-0	3-7-0+	5-0-0	3-8-4	5-8-0	3-7-1	6-2-1+	3-3-5+	8-6-0	3-5-1	8-6-0	6-6-0	0-0-0	6-6-0

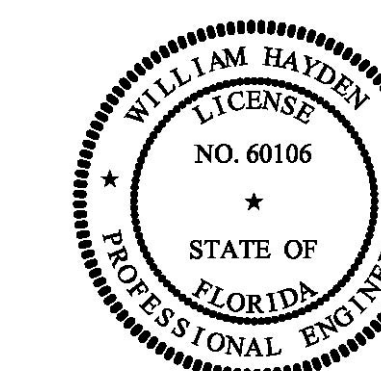
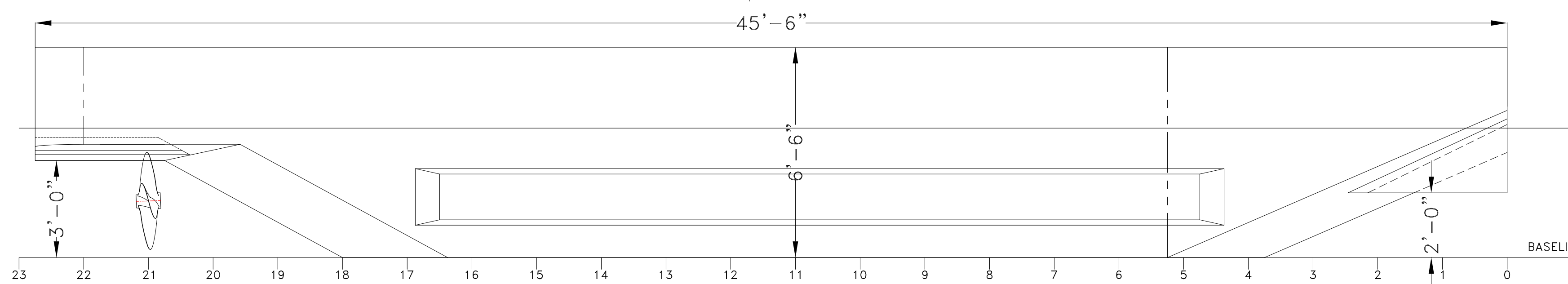
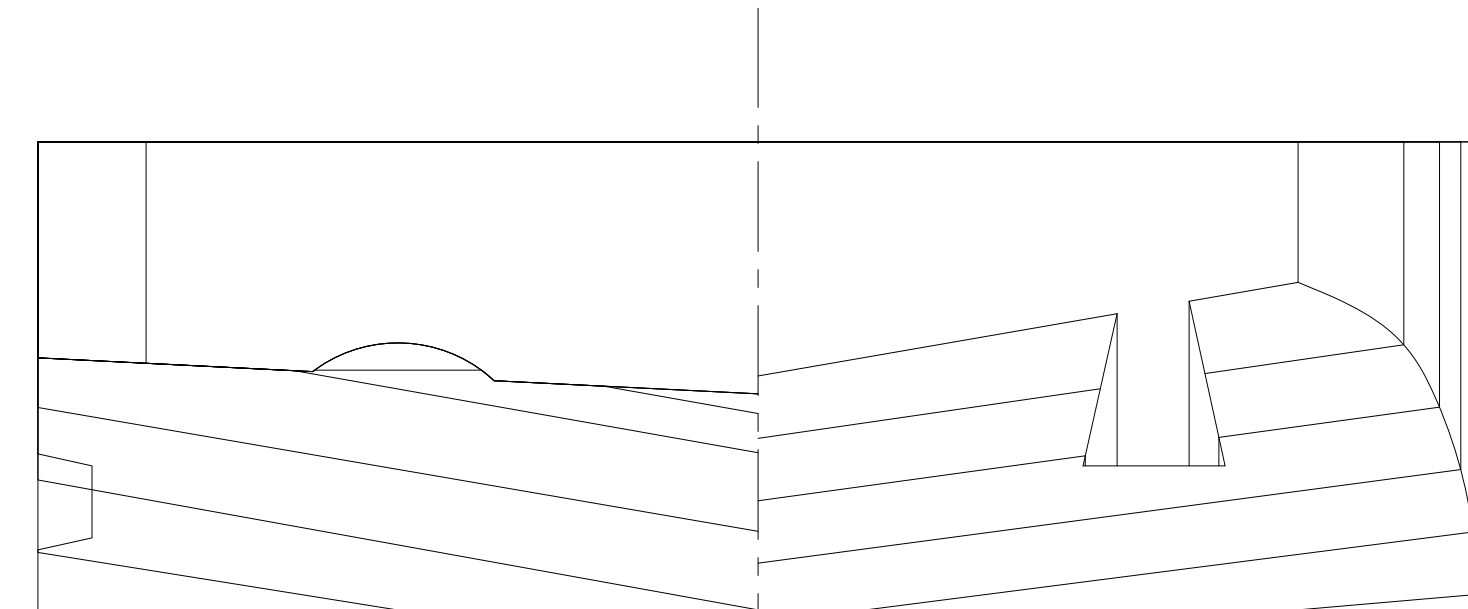
### VESSEL PARTICULARS

LENGTH OVERALL HULL 45'-6"  
 BEAM - MOLDED 20'-0"  
 DEPTH AT SIDE 6'-6"  
 LIGHTSHIP DISPLACEMENT 51 LT  
 FULL LOAD DISPLACEMENT 85 LT



### DRYDOCKING

-KEEL BLOCKS @ 6'-0" CENTERS UNDER FRAMING  
 -CHINE BLOCKS AT ALL XVERSE BHDS @ FRS 3, 10, 17 & 20  
 -KEEL & CHINE BLOCKS SHALL BE MINIMUM 2'x2' PADS OF HARDWOOD OR COMPOSITE MATERIAL  
 MINIMUM AREA OF HULL BLOCKING = 36 SQ. FT



PROPRIETARY RIGHTS  
This document discloses matter in which DeJong & Lebel, Incorporated has proprietary rights. Neither receipt nor possession thereof confers or transfers any right to reproduce, disclose or use in any manner this document in whole or in part or any information contained herein, except by written permission, in writing, signed by DeJong & Lebel, Incorporated.  
In the event of a purchase of this document the purchaser is authorized to construct no more than one device in accord herewith, unless otherwise signed to in writing by DeJong & Lebel, Incorporated.  
© 2018 DeJong & Lebel, Inc.

**DeJong & Lebel, Inc.**  
 Naval Architects  
 Marine Engineers  
 Consultants  
 Surveyors

1734 Emerson Street  
 Jacksonville, Florida 32207  
 www.dejongandlebel.com  
 Phone: (904) 399-3673  
 Fax: (904) 598-1522  
 info@dejongandlebel.com

Title: 45.5'x20'x6.5' NCDOT PUSHBOAT

**LINESPLAN**

Dwg. No. 17-1393-101  
 Art. No. 0  
 Sht. 1 of 1

Drawn By: JACOB CONNALLY Date: JUNE 05, 2018  
 Checked By: Date: \_\_\_\_\_  
 App'd By: Scale: 3/8" = 1'-0"  
 ABS App'l: USCG App'l: \_\_\_\_\_