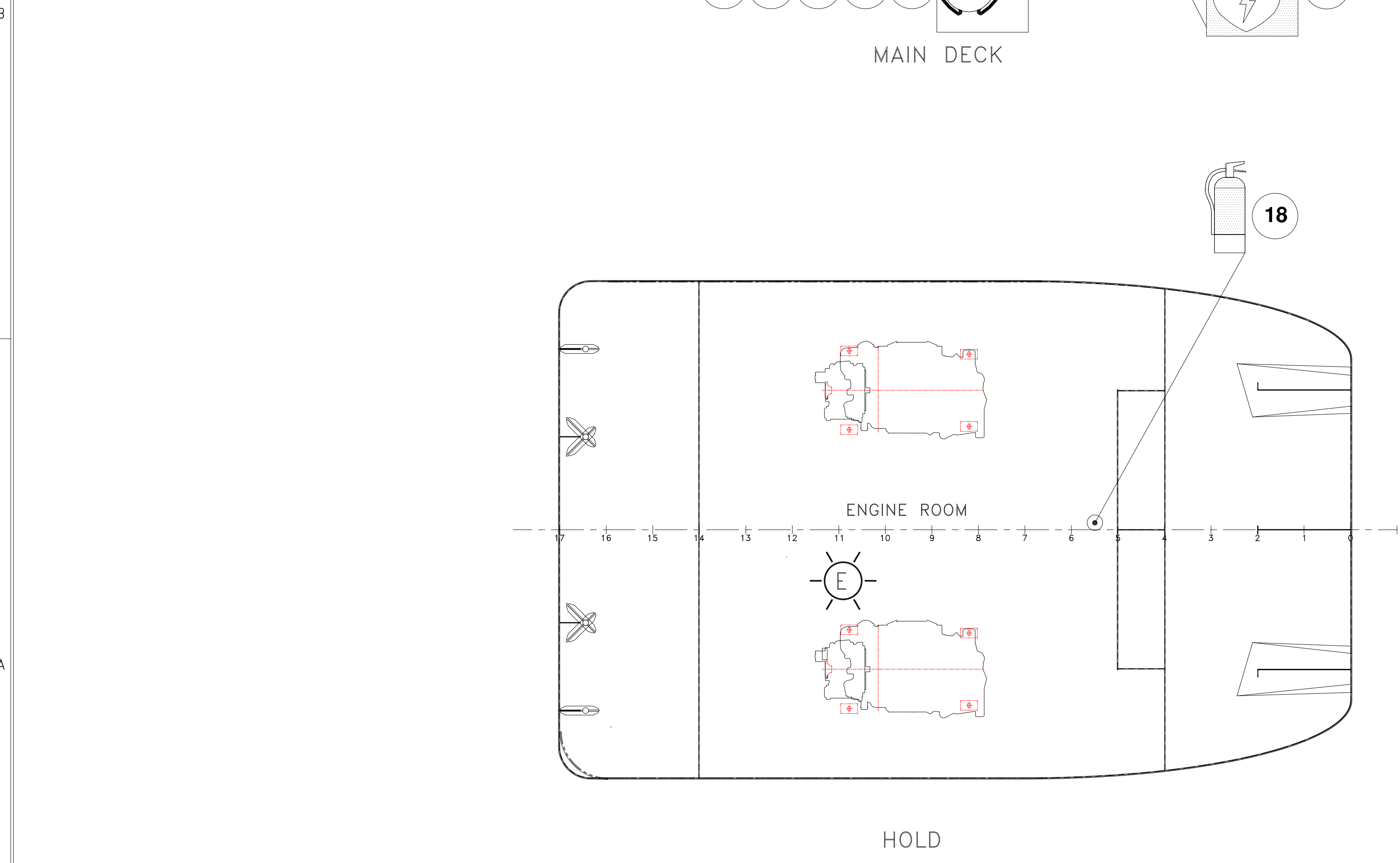
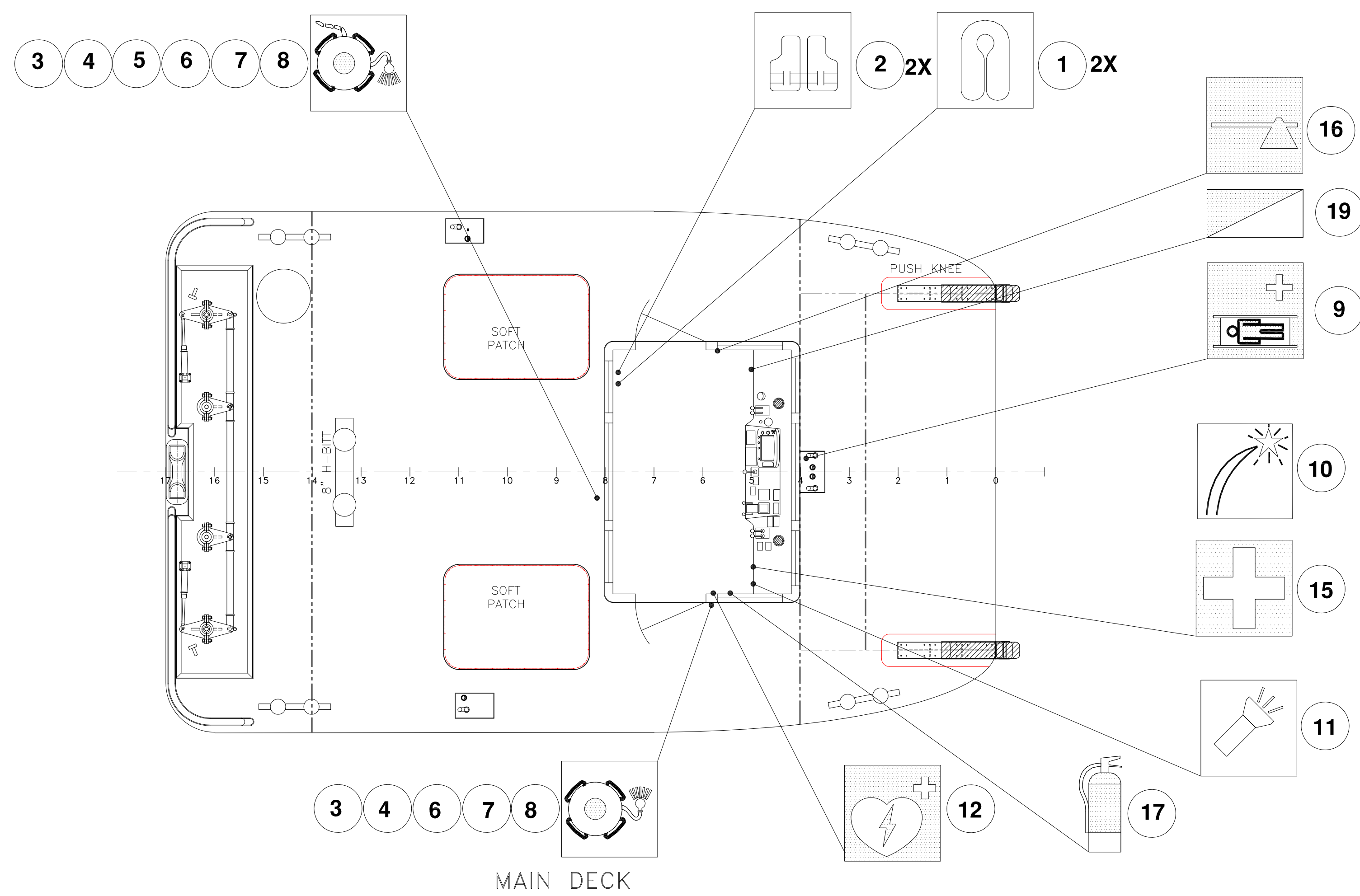
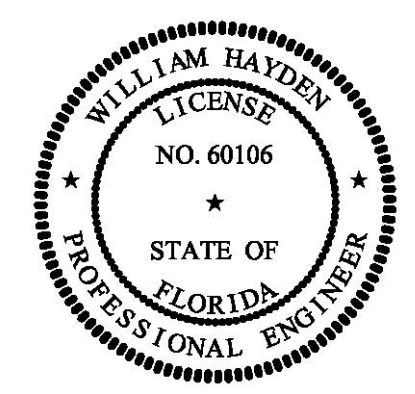


SYMBOL LEGEND	
SYMBOL	DESCRIPTION
	FLOATING RESCUE LITTER
	LIFE PRESERVERS, ADULT
	ADULT WORK VEST
	30" LIFE RING
	30" LIFE RING & WATERLIGHT
	VISUAL DISTRESS SIGNALS
	DEFIBRILLATOR
	FIRE AXE
	FIRE EXTINGUISHER
	FIRE DETECTION SYSTEM CONTROL PANEL
	FIRST AID KIT
	FLASHLIGHT
	EMERGENCY LIGHT



EQUIPMENT LIST						
LIFE SAVING EQUIPMENT						
ITEM	QTY.	DESCRIPTION	LOCATION	PART NUMBER	MANUFACTURER	REMARKS
1	2	LIFE PRESERVERS, ADULT	SEE DWG			
2	2	ADULT WORK VEST	SEE DWG			
3	2	LIFE RING, 30"	SEE DWG			
4	2	BRACKET, LIFE RING	SEE DWG			
5	60 FT	ROPE, ORANGE, POLYETHYLENE, 5/16"	MAIN DECK			
6	2	LIGHT, MAN OVERBOARD	MAIN DECK			
7	2	BRACKET, MAN OVERBOARD LT	MAIN DECK			
8	12 FT	ROPE, ORANGE, POLYETHYLENE, 5/16"	MAIN DECK			6 FT PER LIGHT
RESCUE EQUIPMENT						
ITEM	QTY.	DESCRIPTION	LOCATION	PART NUMBER	MANUFACTURER	REMARKS
9	1	FLOATING RESCUE LITTER	WHEELHOUSE EXT			
10	1	VISUAL DISTRESS SIGNALS	WHEELHOUSE			
11	1	FLASHLIGHT & D BATTERIES	WHEELHOUSE			
12	1	DEFIBRILLATOR, PORTABLE	GALLEY			
FIRE & SAFETY EQUIPMENT						
ITEM	QTY.	DESCRIPTION	LOCATION	PART NUMBER	MANUFACTURER	REMARKS
16	1	AXE, FIRE	WHEELHOUSE			W/ MOUNTING BRACKETS
17	1	FIRE EXTINGUISHER, 10# ABC TYP. II	WHEELHOUSE			W/ MOUNTING BRACKETS
18	1	FIRE EXTINGUISHER, 10# ABC TYPE II	ENGINE ROOM			W/ MOUNTING BRACKETS
19	1	FIRE DETECTION SYSTEM	WHEELHOUSE			

PROPRIETARY RIGHTS
 This document discloses matter in which DeJong & Lebet, Incorporated has proprietary rights. Neither receipt nor possession thereof confers or transfers any right to reproduce, disclose or use in any manner this document in whole or in part or any information contained therein, except by written permission or written agreement with DeJong & Lebet, Incorporated.
 In the event of a purchase of this document the purchaser is authorized to construct no more than one device in accord herewith, unless otherwise agreed to in writing by DeJong & Lebet, Incorporated.
 © 2018 by DeJong & Lebet, Inc.



DeJong & Lebet, Inc.
 Naval Architects
 Marine Engineers
 Consultants
 Surveyors

1734 Emerson Street
 Jacksonville, Florida 32207
 www.dejongandlebet.com

Phone: (904) 399-3673
 Fax: (904) 399-1522
 info@dejongandlebet.com

Title: 25'x16'x6.5' NCDOT PUSHBOAT

LIFE, EMERGENCY & FIRE FIGHTING EQUIPMENT

Dwg. No. 17-1393B-680 Alt. No. 0
 Sht. 1 of 1

Drawn By: JAH Date: JAN 2, 2019
 Checked By: _____ Date: _____
 App'd By: _____ Scale: 3/8" = 1'-0"
 ABS App'l: _____ USCG App'l: _____