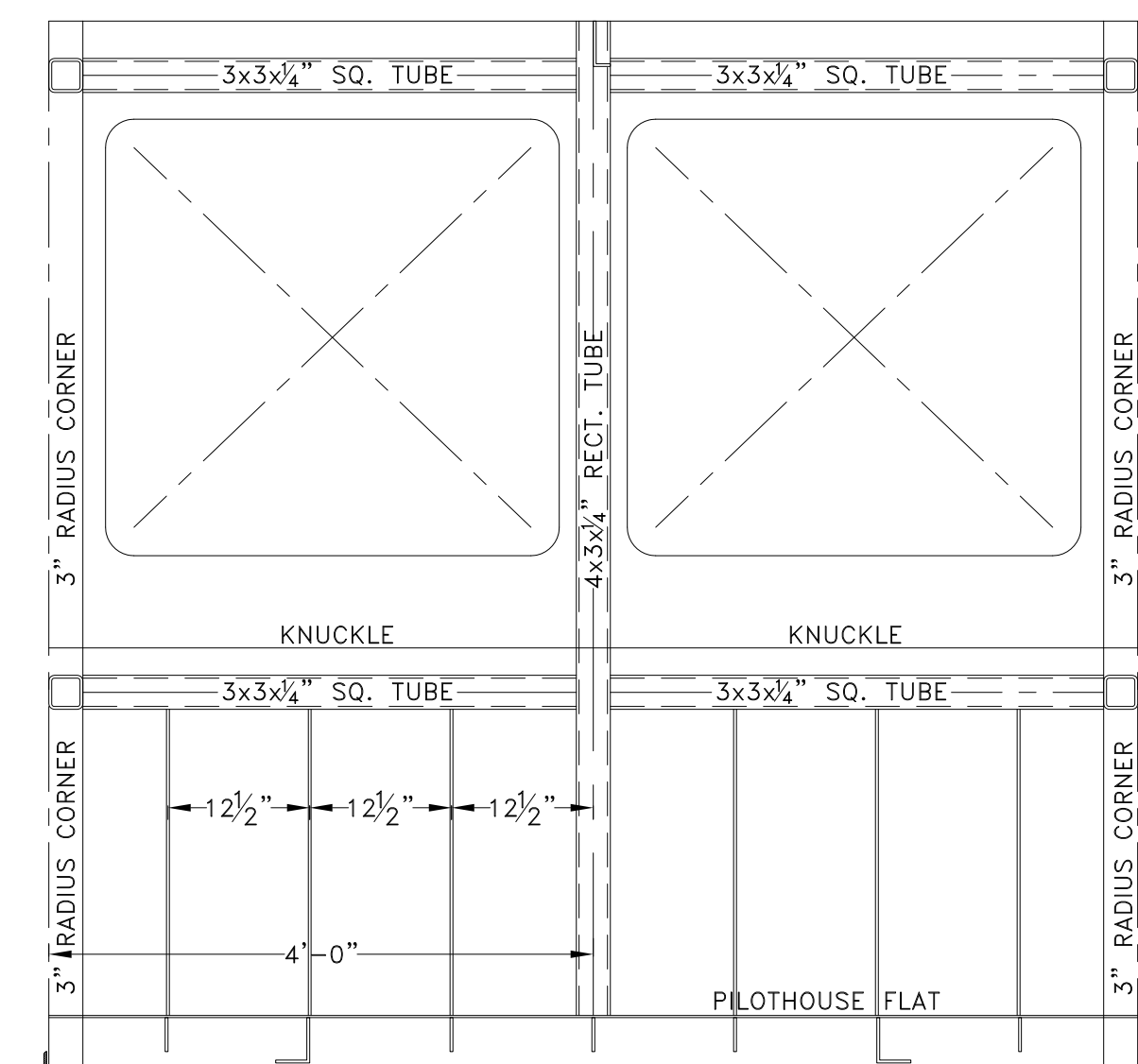
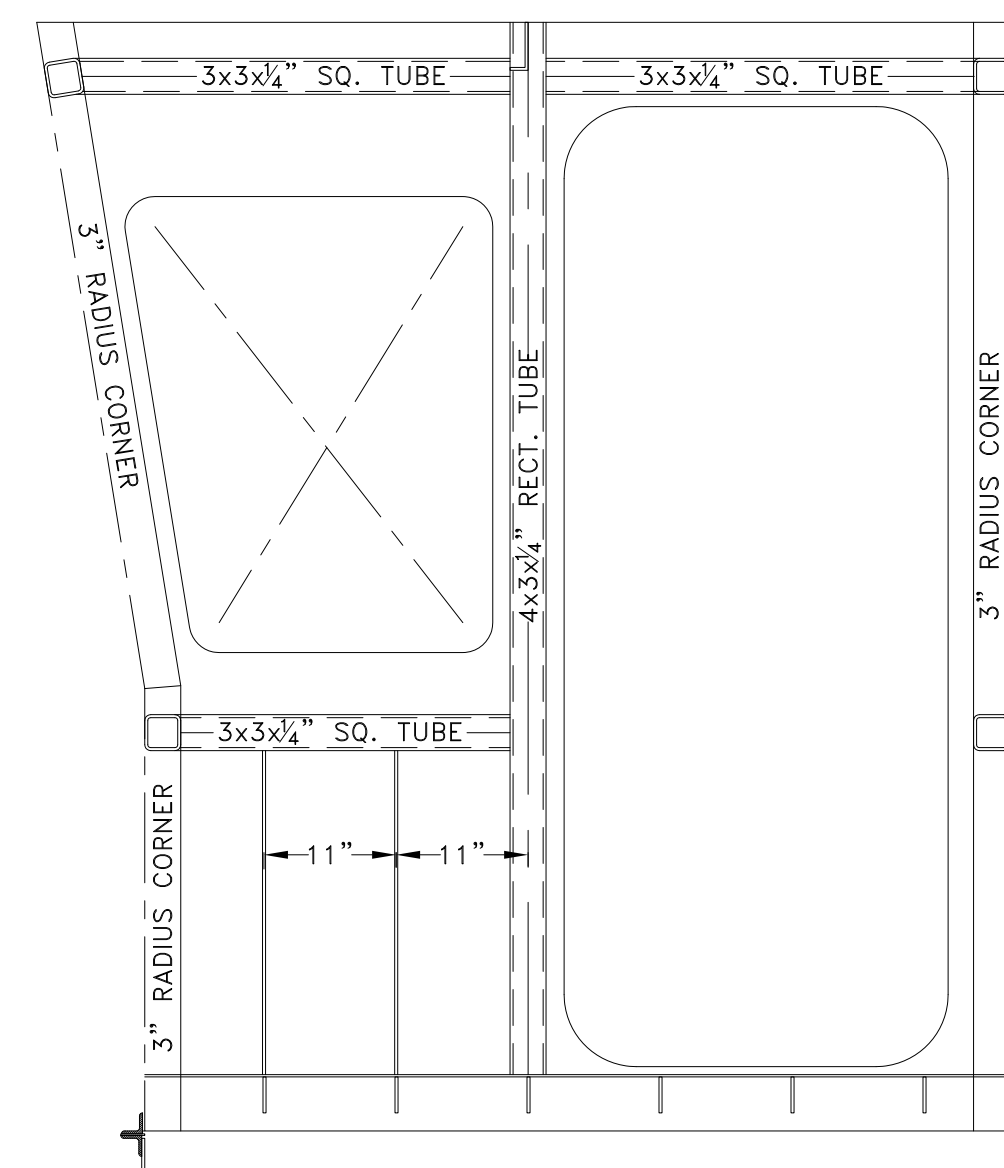


WHEELHOUSE
PORT SIDE BHD @ 4'-0" OCL
 1/4" PL W/ 1/2x3" F.B. STIFFENERS
 UNLESS OTHERWISE NOTED
 SHOWN LKG OUTBD
 STIFFENERS ON INBD FACE

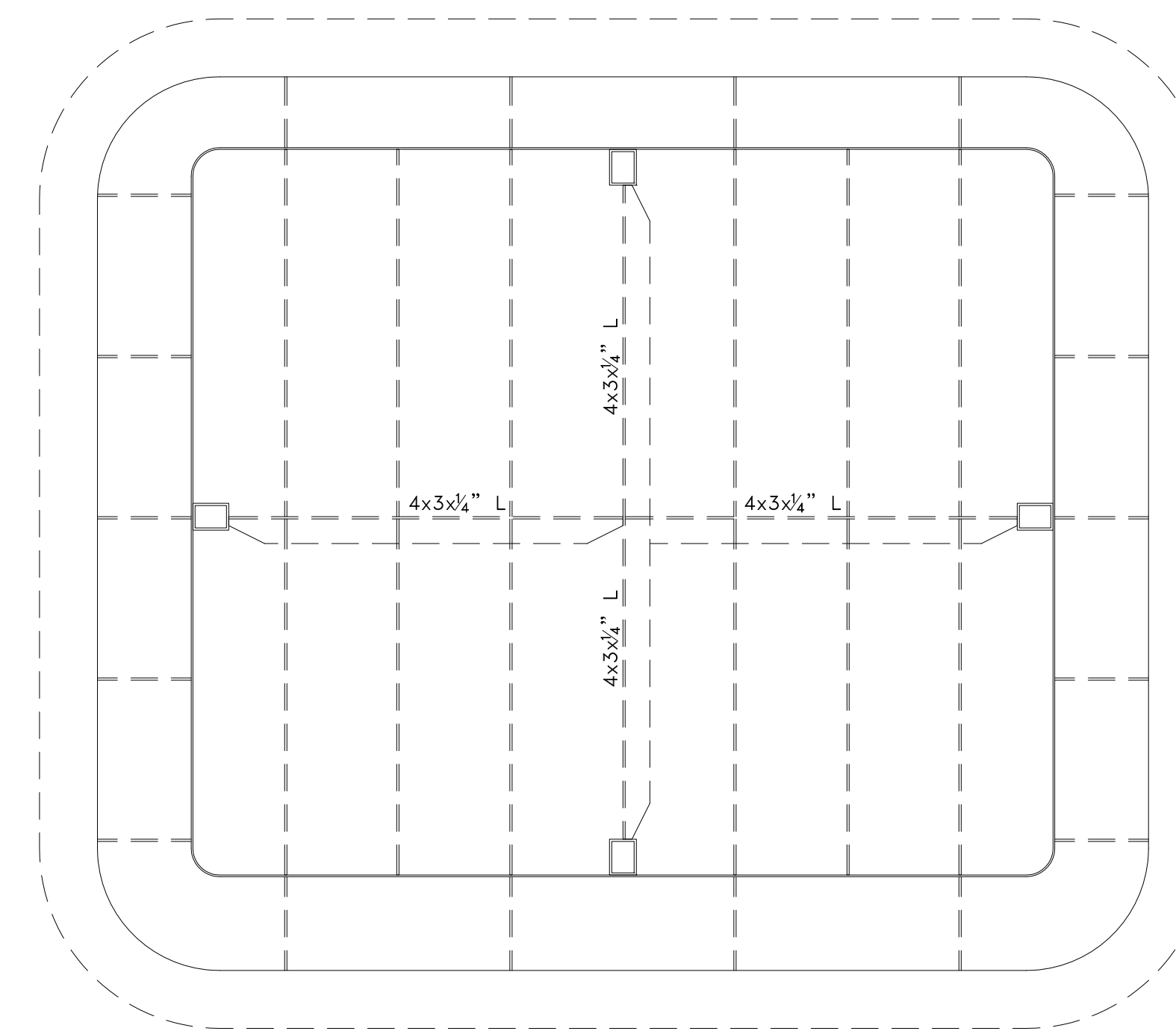


WHEELHOUSE
FWD BHD @ FR 4
 1/4" PL W/ 1/2x3" F.B. STIFFENERS
 UNLESS OTHERWISE NOTED

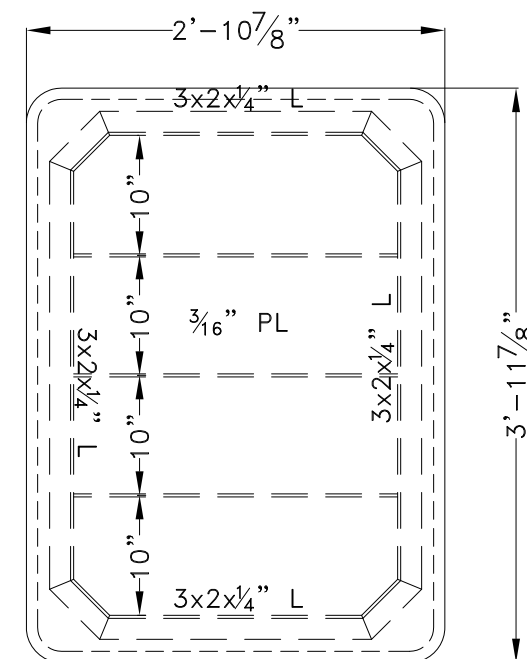


WHEELHOUSE
STBD SIDE BHD @ 4'-0" OCL
 1/4" PL W/ 1/2x3" F.B. STIFFENERS
 UNLESS OTHERWISE NOTED
 SHOWN LKG OUTBD
 STIFFENERS ON INBD FACE

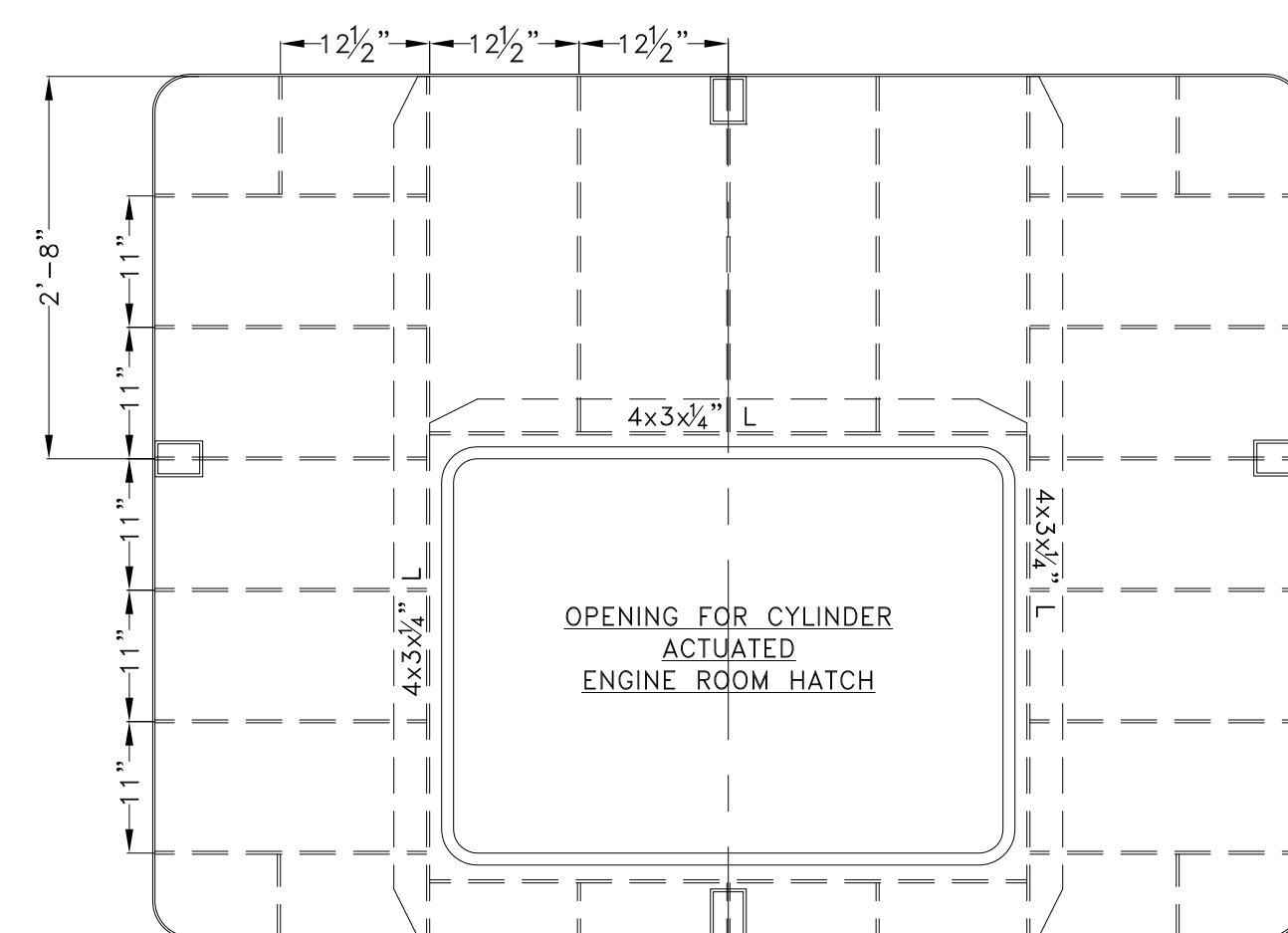
ALL DECKHOUSE CONSTRUCTION
5086 H116 AL. PLATING
6061-T6 AL. EXTRUSIONS



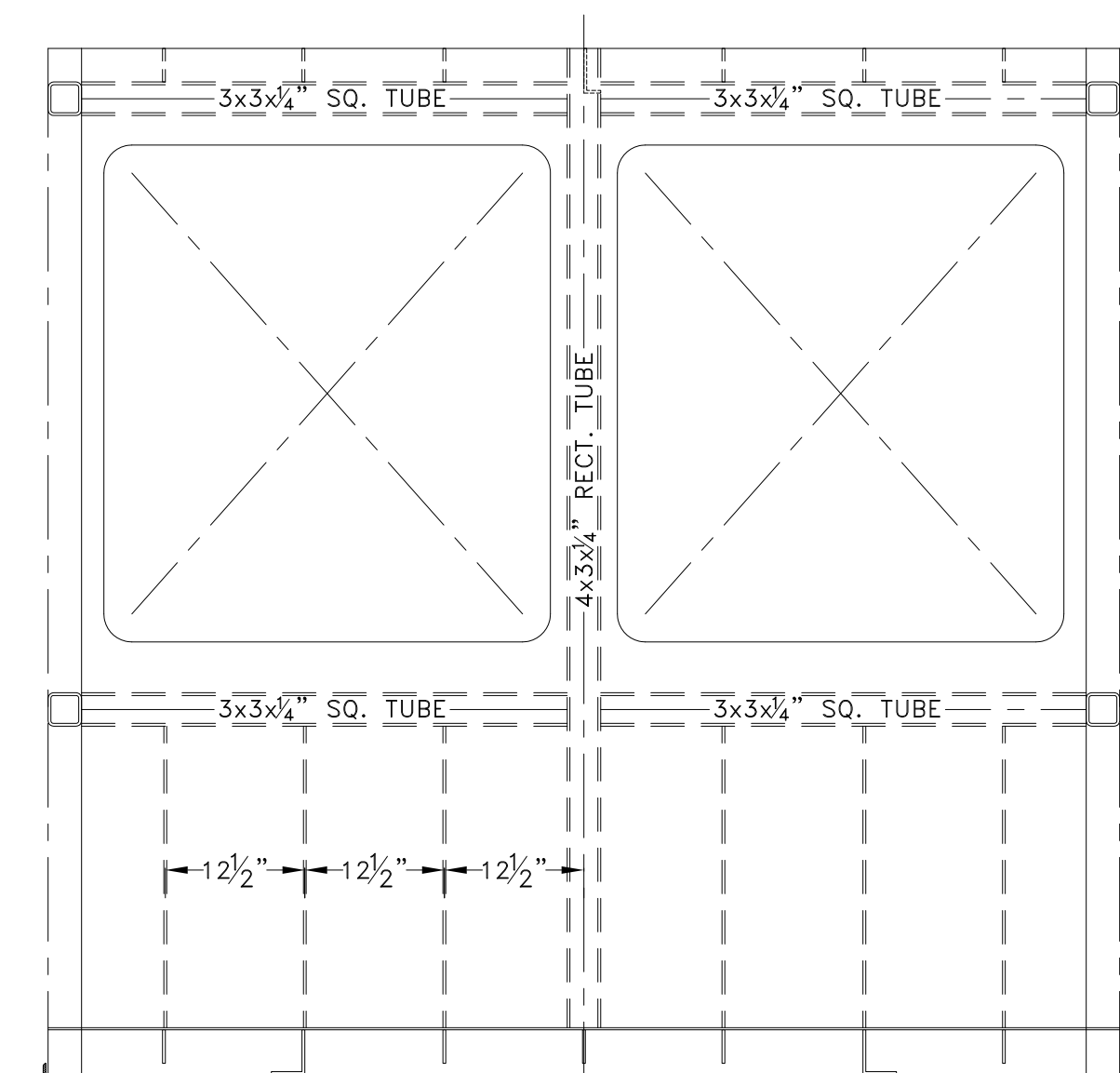
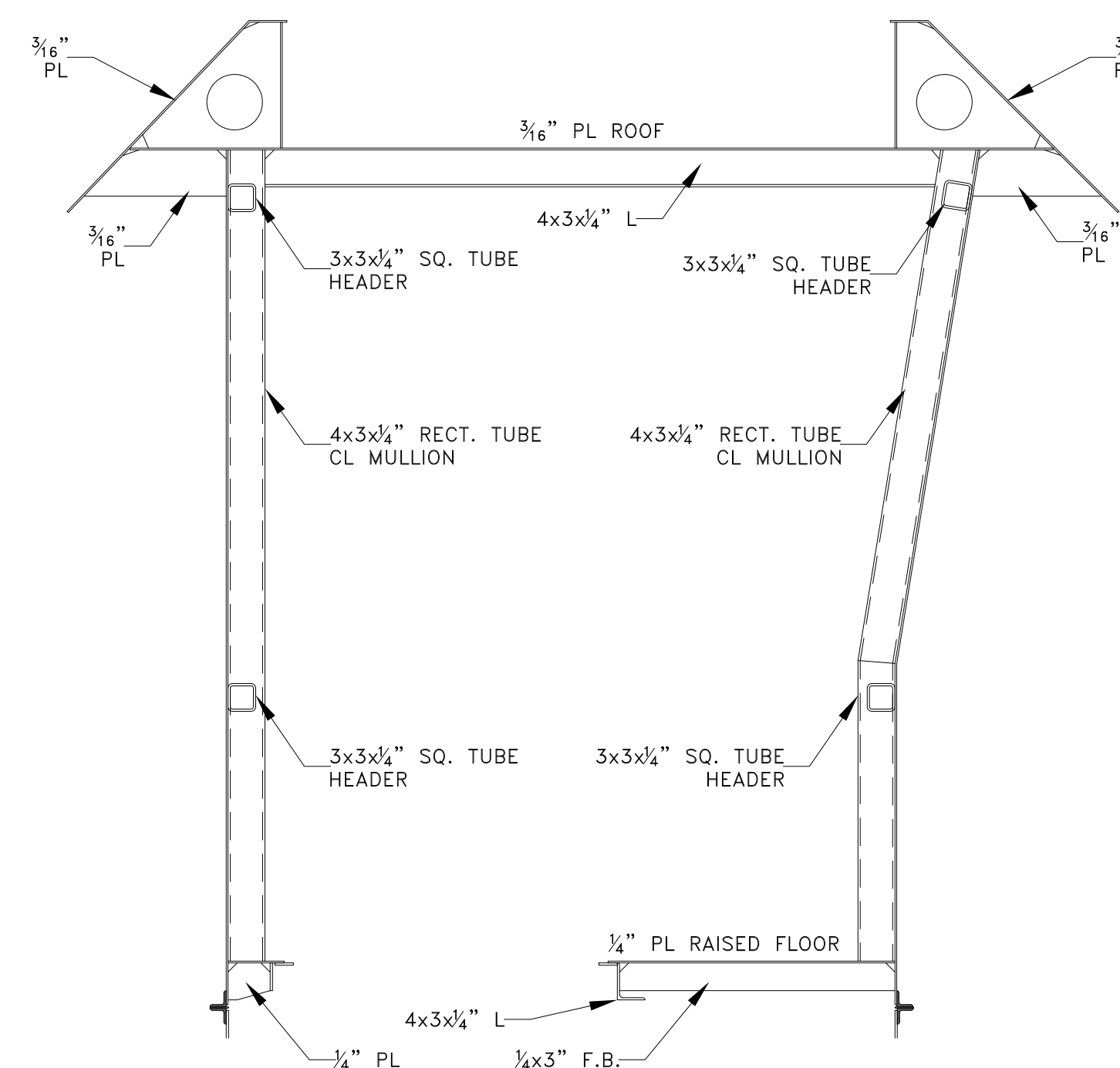
WHEELHOUSE
ROOF FLAT
 1/4" PL W/ 1/2x3" F.B. STIFFENERS
 UNLESS OTHERWISE NOTED



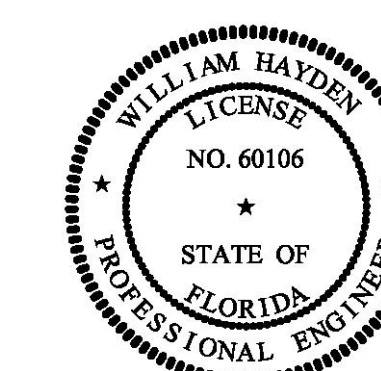
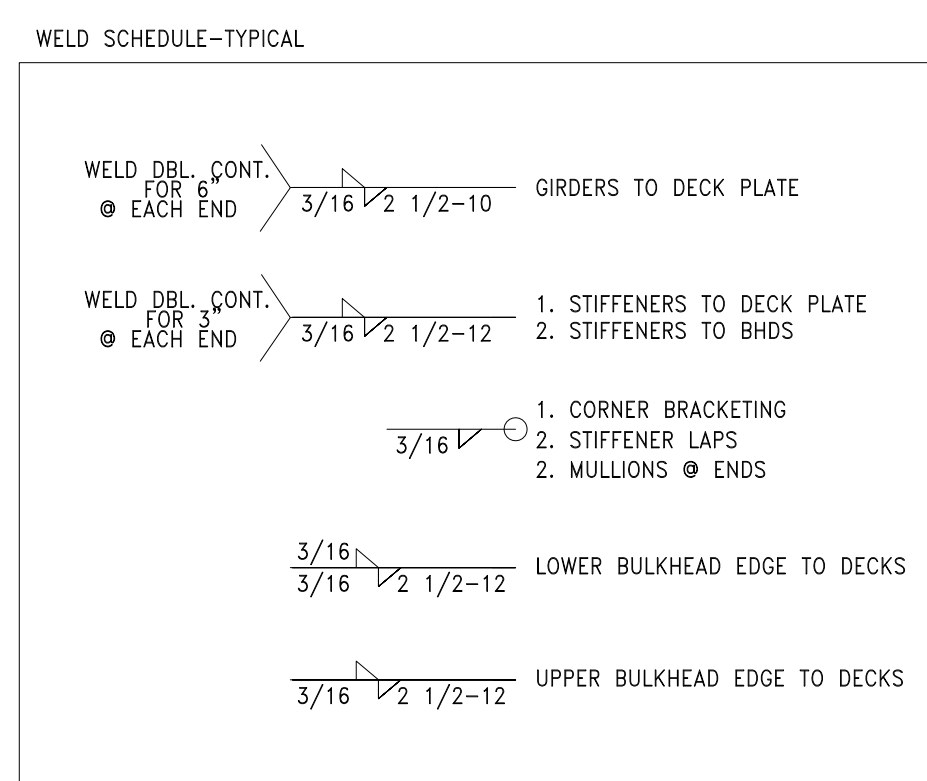
ER ACCESS HATCH PANEL
 1/4" PL W/ 1/2x3" F.B.
 UNLESS OTHERWISE NOTED
 CYLINDER ACTUATION BY BUILDER TO SUIT
 FINAL INSTALLATION DETAILS



1/4" PL WHEELHOUSE
DECK DETAILS
 1/4" PL W/ 1/2x3" F.B. STIFFENERS
 UNLESS OTHERWISE NOTED



WHEELHOUSE
AFT BHD @ FR 8
 1/4" PL W/ 1/2x3" F.B. STIFFENERS
 UNLESS OTHERWISE NOTED



PROPRIETARY INFO
 This document contains neither the designs nor the specifications of DeJong & Lebet, Inc. nor does it constitute a contract. It is the property of DeJong & Lebet, Inc. and is loaned to you for your use only. It is not to be reproduced, stored in a retrieval system, or transmitted in any form or by any means, electronic, mechanical, photocopying, recording, or by any information storage and retrieval system, without the prior written permission of DeJong & Lebet, Inc.

DeJong & Lebet, Inc.
 Naval Architects
 Marine Engineers
 Consultants
 Surveyors

1724 Emerson Street
 Jacksonville, Florida 32207
 www.dejongandlebet.com
 Phone: (904) 399-3473
 Fax: (904) 399-1522
 info@dejongandlebet.com

Title: 45.5'x20'x6.5' NCDOT PUSHBOAT

ALUMINUM PILOTHOUSE
STRUCTURAL DETAILS

Dwg. No. 17-1393B-152 Alt. No. 0
 Sh. 1 of 2

Drawn By: JACOB CONNALLY Date: JUNE 05, 2018
 Checked By: _____ Date: _____
 App'd By: _____ Scale: 3/4" = 1'-0"
 ABS App'l: _____ USCG App'l: _____