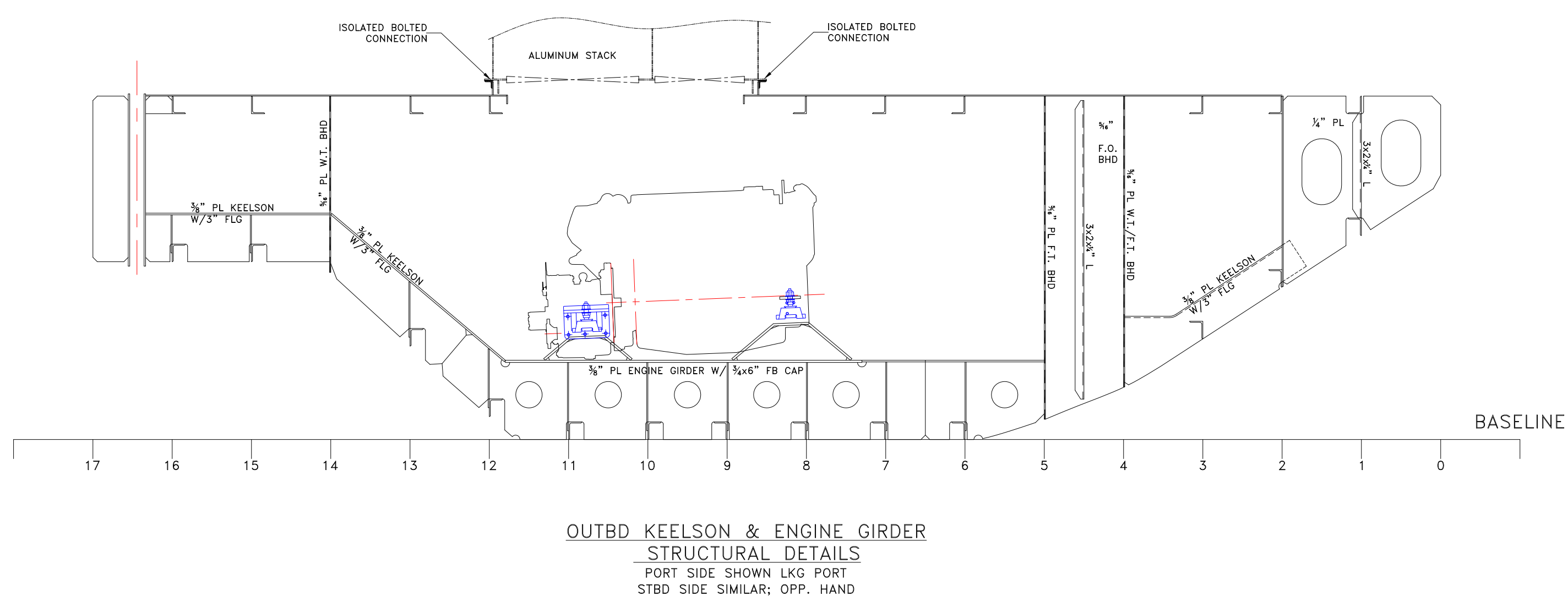
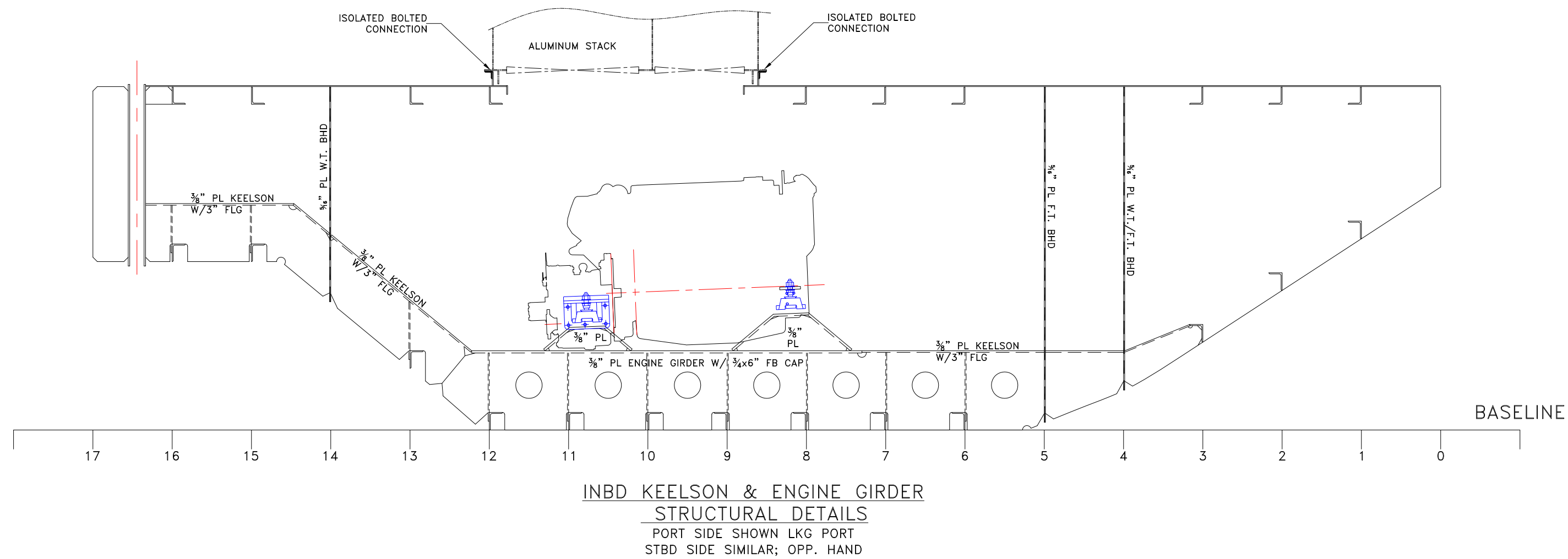


WELD SCHEDULE-TYPICAL

WELD DBL. CONT. FOR 2 1/2\"/>	3/16 3-12 FRAMES TO HULL & SIDESHELL	WELD DBL. CONT. FOR 2 1/2\"/>	3/16 3-12 TRANSVERSE STIFFENERS TO MAIN DECK
WELD DBL. CONT. FOR 10% OF STIFF L\"/>	3/16 3-12 1. STIFFENERS TO W.T. BHDS 2. STIFFENERS HULL & SIDESHELL PLATING	WELD DBL. CONT. FOR 8\"/>	3/16 3-12 LONGITUDINAL GIRDERS TO MAIN DECK
	3/16 3-12 W.T. BHDS TO SHELL PLATING		3/16 1. BOTTOM FRAME BUTT TO KEEL PLATE 2. CORNER BRACKETING
	1/8 1 1/2-9 N.T. BHDS TO SHELL PLATING		TYP 1/8 F.T. STAIRS TO F.T. BHDS
WELD DBL. CONT. FOR 2 1/2\"/>	1/8 1 1/2-12 STIFFENERS TO N.T. BHDS		



PROPRIETARY RIGHTS

This document discloses neither in which DeJong & Lebet, Incorporated has proprietary rights. Neither we nor our possession transfer control or ownership or right to reproduction, disclosure or use in any manner this document in whole or in part or any information contained herein, except by written permission, or written agreement with DeJong & Lebet, Incorporated.

In the event of a purchase of this document the purchaser is authorized to construct no more than one device to accord herewith, unless otherwise agreed to in writing by DeJong & Lebet, Incorporated.

© 2018 by DeJong & Lebet, Inc.

**DeJong & Lebet, Inc.**  
 Naval Architects  
 Marine Engineers  
 Consultants  
 Surveyors

1724 Emerson Street  
 Jacksonville, Florida 32207  
 www.dejongandlebet.com

Phone: (904) 399-3673  
 Fax: (904) 399-1522  
 info@dejongandlebet.com

Title: 45.5'x20'x6.5' NCDOT PUSHBOAT

**LONGITUDINAL SECTIONS**

Dwg. No. **1393B-120** Alt. No. 0  
 Sht. 1 of 1

Drawn By: **JACOB CONNALLY** Date: **JANUARY 2, 2019**  
 Checked By: \_\_\_\_\_ Date: \_\_\_\_\_  
 App'd By: \_\_\_\_\_ Scale: **1/2" = 1'-0"**  
 ABS App'l: \_\_\_\_\_ USCG App'l: \_\_\_\_\_

