



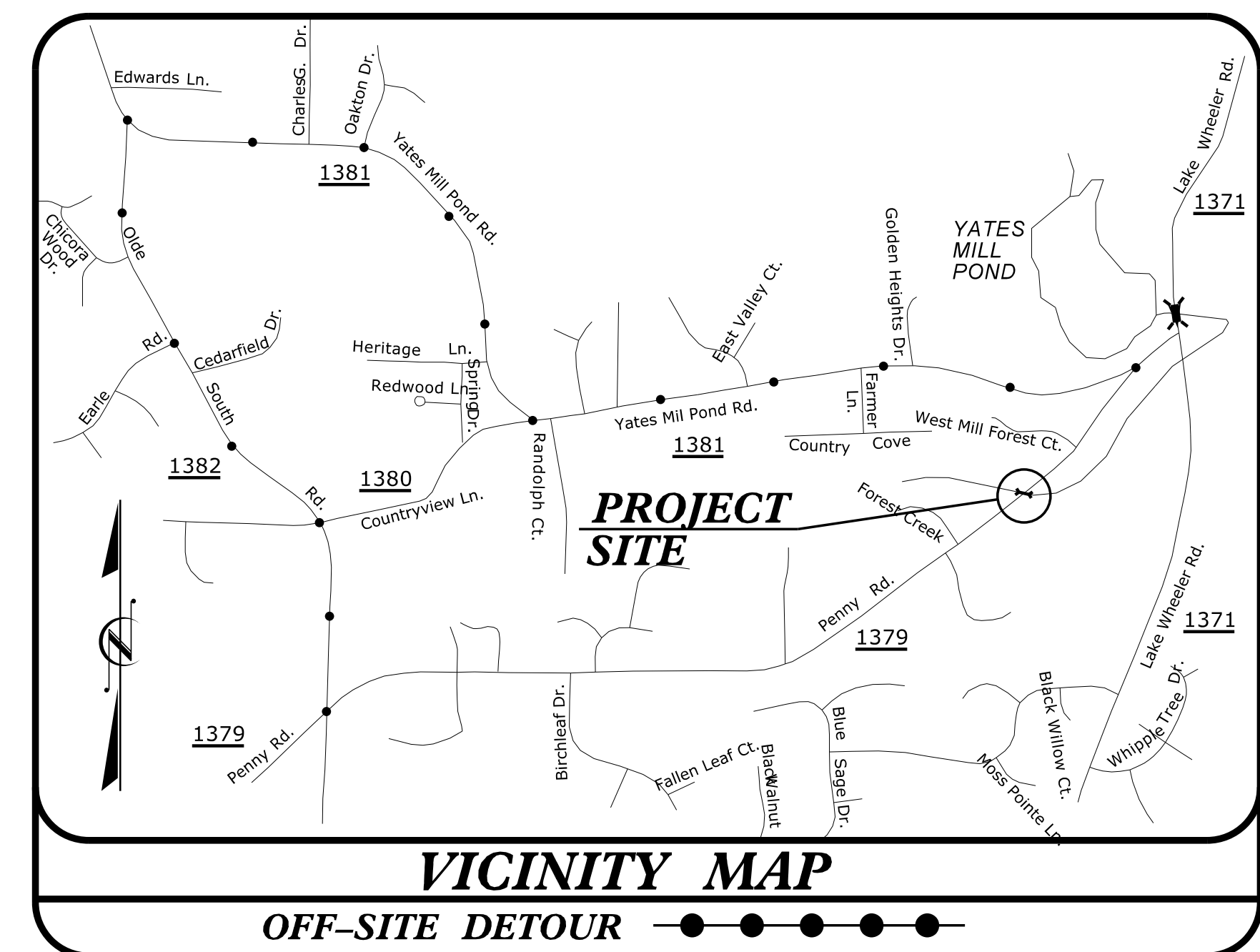
1223 Jones Franklin Rd.
Raleigh, N.C. 27606
License No. F-0377
Bus: 919 851 8077
Fax: 919 851 8107

TRANSPORTATION PLANNING/DESIGN - BRIDGE/STRUCTURE DESIGN
CIVIL/SITE DESIGN - GIS/GPS - CONSTRUCTION OBSERVATION

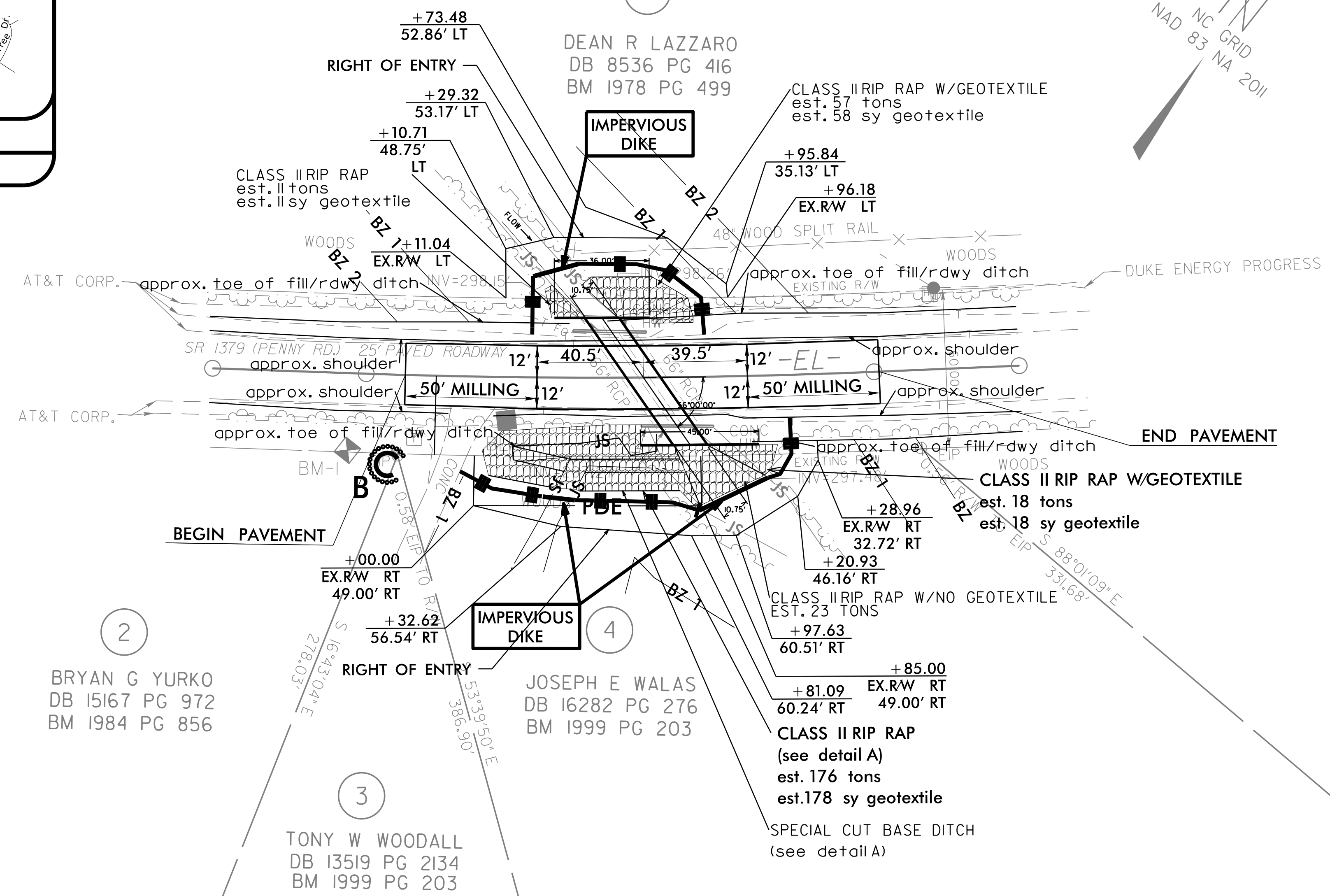
PROJECT REFERENCE NO. 5B.209214.5	SHEET NO. EC-6
RW SHEET NO.	
ROADWAY DESIGN ENGINEER	HYDRAULICS ENGINEER

**PENNY ROAD
(SR 1379)**

SCALE 1" = 30'



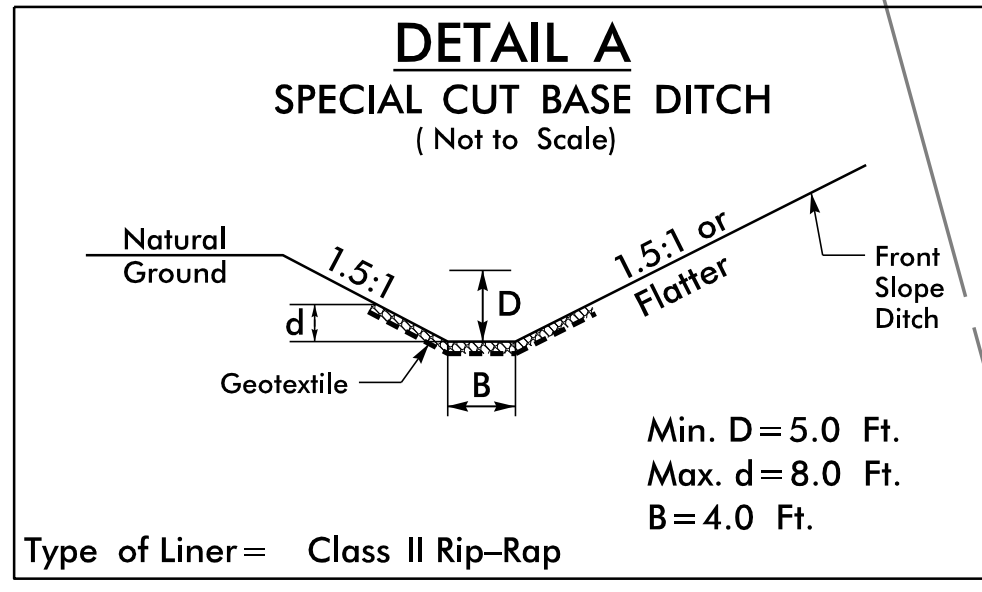
10'-9" x 6'-10" ALUM. ALLOY
STRUCTURAL PLATE PIPE-ARCH
WITH ENDWALLS



BM1 ELEVATION = 307.36
N 714838 E 2091908
BL STATION 15+62.00 22 RIGHT
BM SET IN 24" OAK

DATUM DESCRIPTION
THE LOCALIZED COORDINATE SYSTEM DEVELOPED FOR THIS PROJECT IS BASED ON THE STATE PLANE COORDINATES ESTABLISHED BY NCGS FOR MONUMENT "GPS-2" WITH NAD 83/NA 2011 STATE PLANE GRID COORDINATES OF NORTHING: 714251.11(±) EASTING: 2091028.27(±) ELEVATION: 374.34 (±) THE AVERAGE COMBINED GRID FACTOR USED ON THIS PROJECT (GROUND TO GRID) IS: 0.999892693 THE N.C. LAMBERT GRID BEARING AND LOCALIZED HORIZONTAL GROUND DISTANCE FROM "GPS-2" TO -L- STATION IS ALL LINEAR DIMENSIONS ARE LOCALIZED HORIZONTAL DISTANCES VERTICAL DATUM USED IS NAVD 88

Point	North	East	Elevation
GPS-1	714496.1300	2091351.7000	349.8200
GPS-2	714251.1100	2091028.2700	374.3400
BL-3	714764.5000	2091719.5450	314.5500
BL-4	714884.3010	2091948.1000	307.8500



EROSION CONTROL PLAN

REVISIONS

8/17/09
11/30/2008
I:\Projects\2008\1130\Roadway\Penney_rdy_EC6.dgn
11/30/2008