

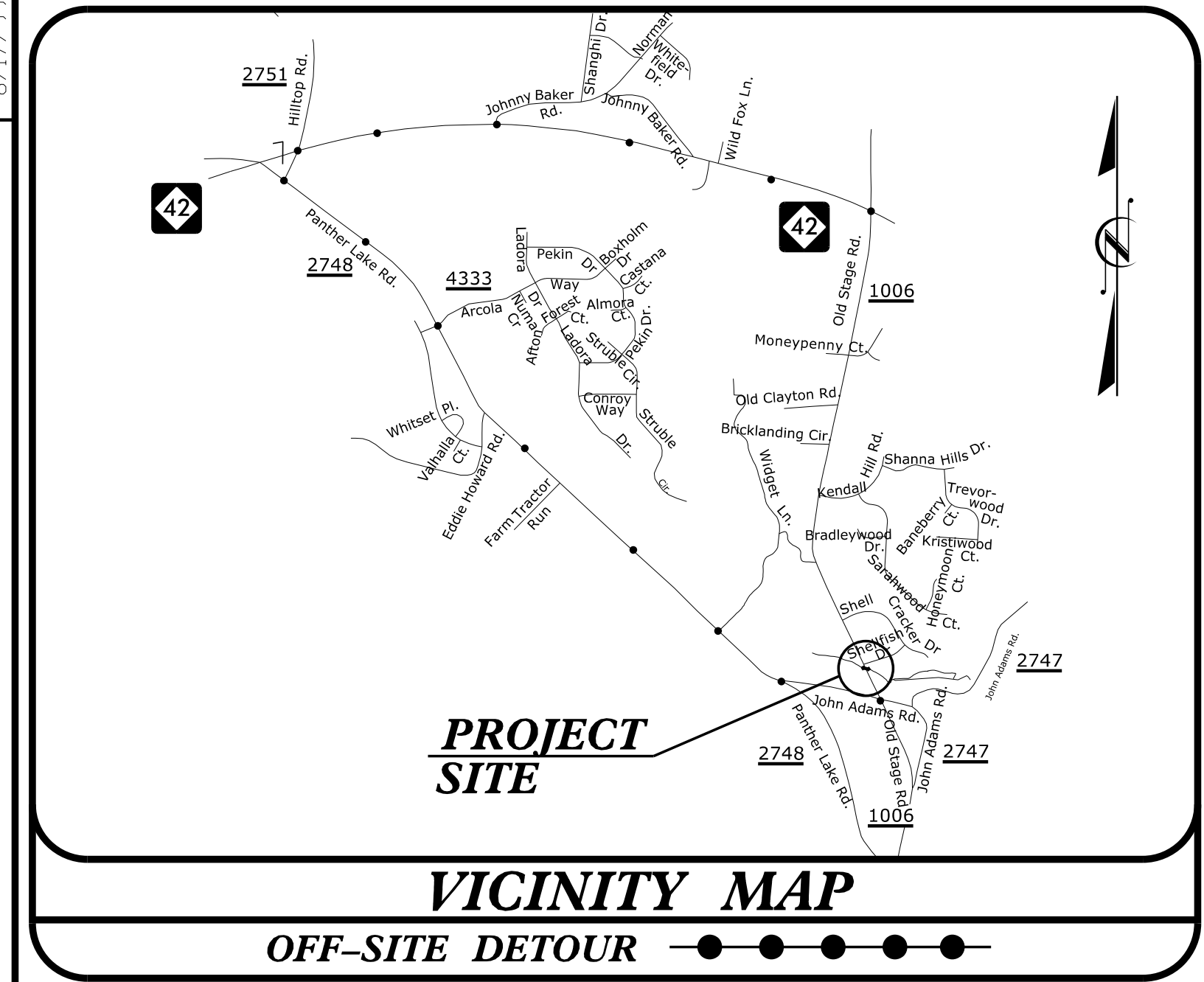
1223 Jones Franklin Rd.
Raleigh, N.C. 27606
License No. F-0377
Bus: 919 851 8077
Fax: 919 851 8107

TRANSPORTATION PLANNING/DESIGN - BRIDGE/STRUCTURE DESIGN
CIVIL/SITE DESIGN - GIS/GPS - CONSTRUCTION OBSERVATION

PROJECT REFERENCE NO. 5B.209214.5	SHEET NO. EC-5
RW SHEET NO.	
DOCUMENT NOT CONSIDERED FINAL UNLESS ALL SIGNATURES COMPLETED	

OLD STAGE ROAD (SR 1006)

SCALE 1" = 30'



DATUM DESCRIPTION

THE LOCALIZED COORDINATE SYSTEM DEVELOPED FOR THIS PROJECT IS BASED ON THE STATE PLANE COORDINATES ESTABLISHED BY NCGS FOR MONUMENT "GPS-2" WITH NAD 83/NA 2011 STATE PLANE GRID COORDINATES OF NORTHING: 662830.43(±) EASTING: 2092301.84(±) ELEVATION: 292.07(±)

THE AVERAGE COMBINED GRID FACTOR USED ON THIS PROJECT (GROUND TO GRID) IS: 0.999879786

THE N.C. LAMBERT GRID BEARING AND LOCALIZED HORIZONTAL GROUND DISTANCE FROM "GPS-2" TO -L- STATION IS

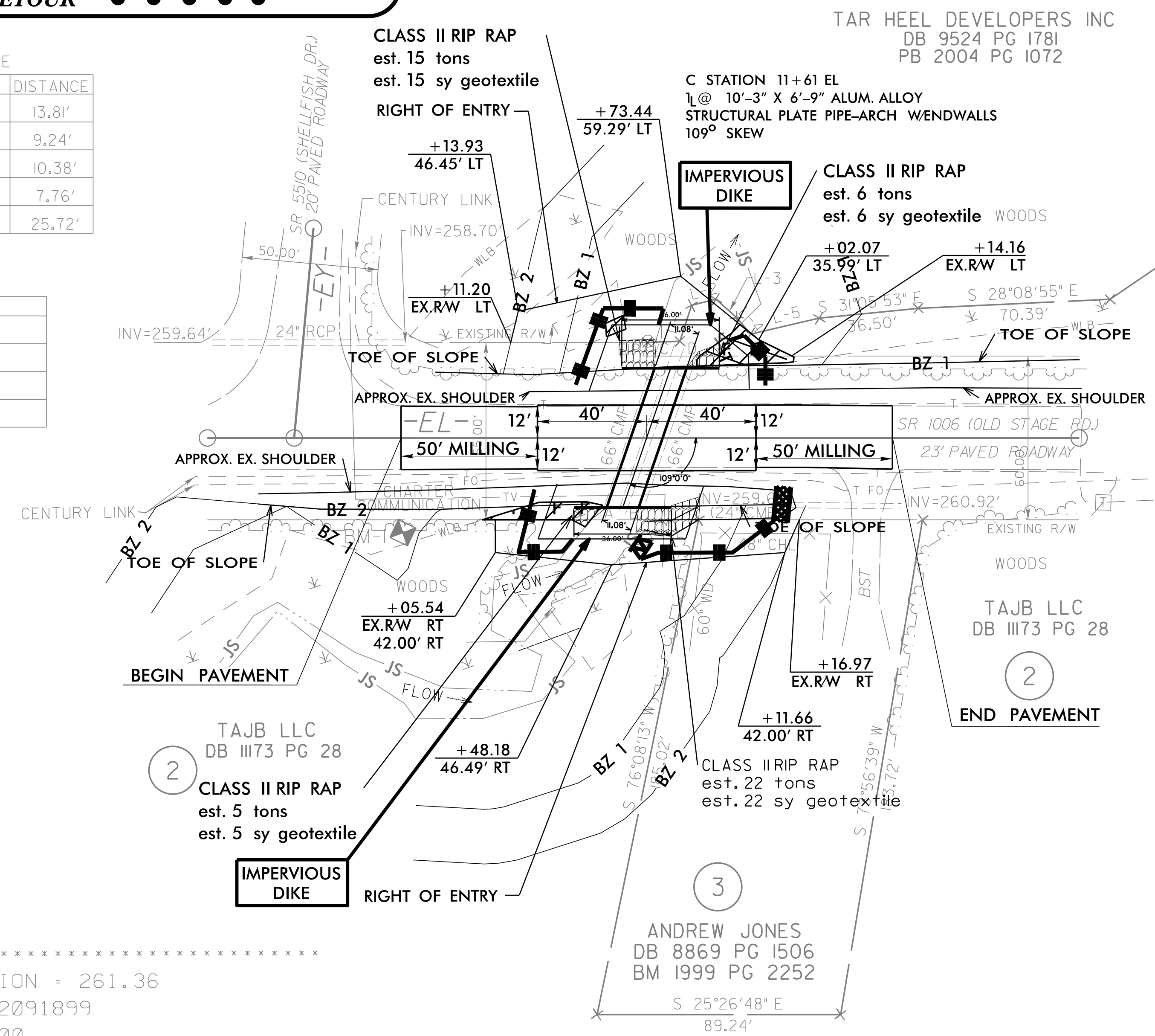
ALL LINEAR DIMENSIONS ARE LOCALIZED HORIZONTAL DISTANCES
VERTICAL DATUM USED IS NAVD 88

PROPERTY LINE TABLE

LINE	BEARING	DISTANCE
L-1	N 82°27'41" E	13.81'
L-2	S 39°55'55" E	9.24'
L-3	S 16°24'01" W	10.38'
L-4	S 23°53'39" W	7.76'
L-5	S 38°31'30" E	25.72'

HYDRO STRUCTURES

NAME	INVERT
A	INV=254.06'
B	INV=254.25'
C	INV=253.54'
D	INV=253.69'



EROSION CONTROL PLAN

 BM1 ELEVATION = 261.36
 N 663554 E 2091899
 BL STATION 5+00.00
 N 33°58'34.9" W DIST 344.97
 BM SET IN 24" PINE

REVISIONS

12/18/2008 2:14:53 Wake SR 1006.rdw_EC4.dgn
IT:ERSKENDY