

TIP PROJECT: SB.209214.5

STATE OF NORTH CAROLINA
DIVISION OF HIGHWAYS

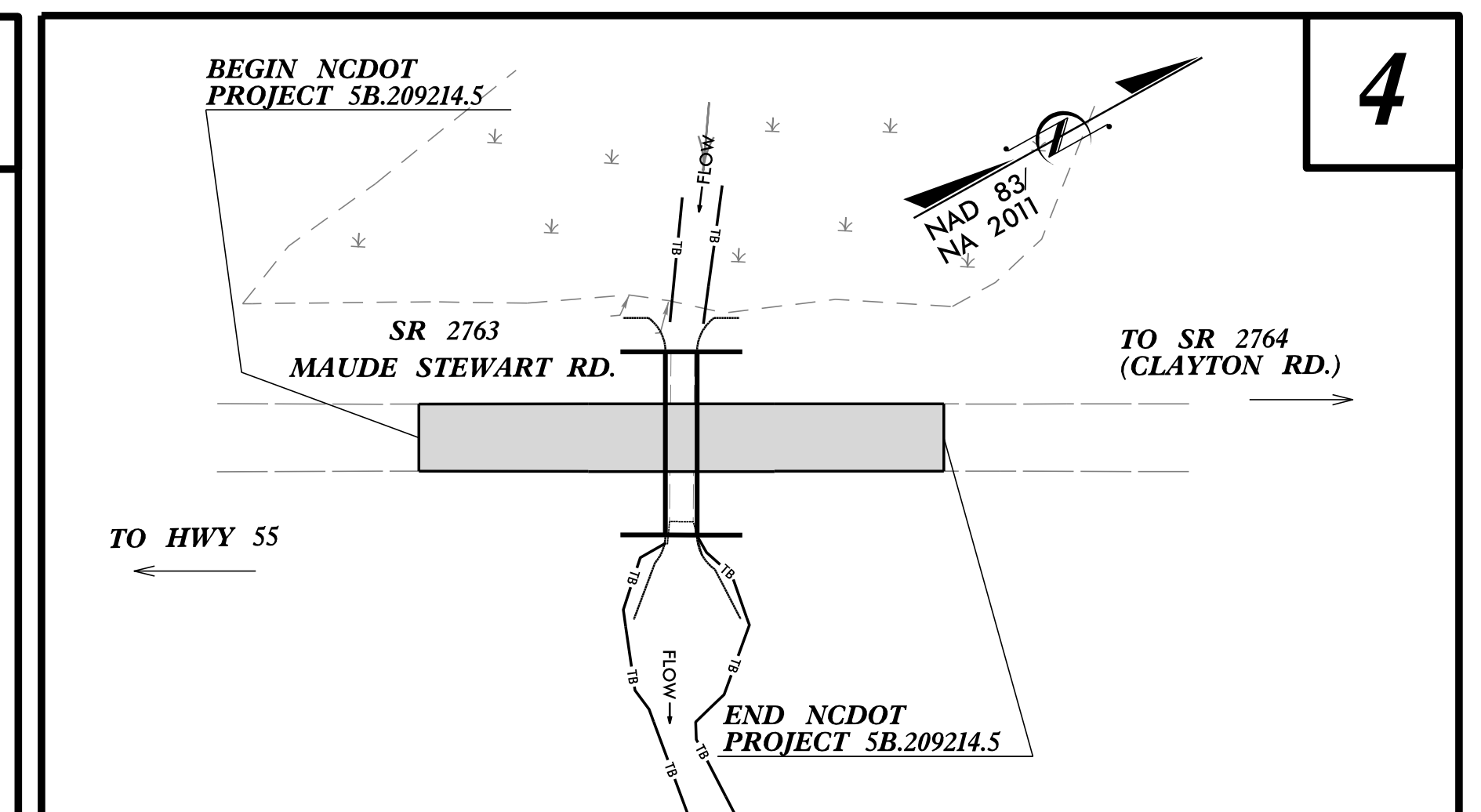
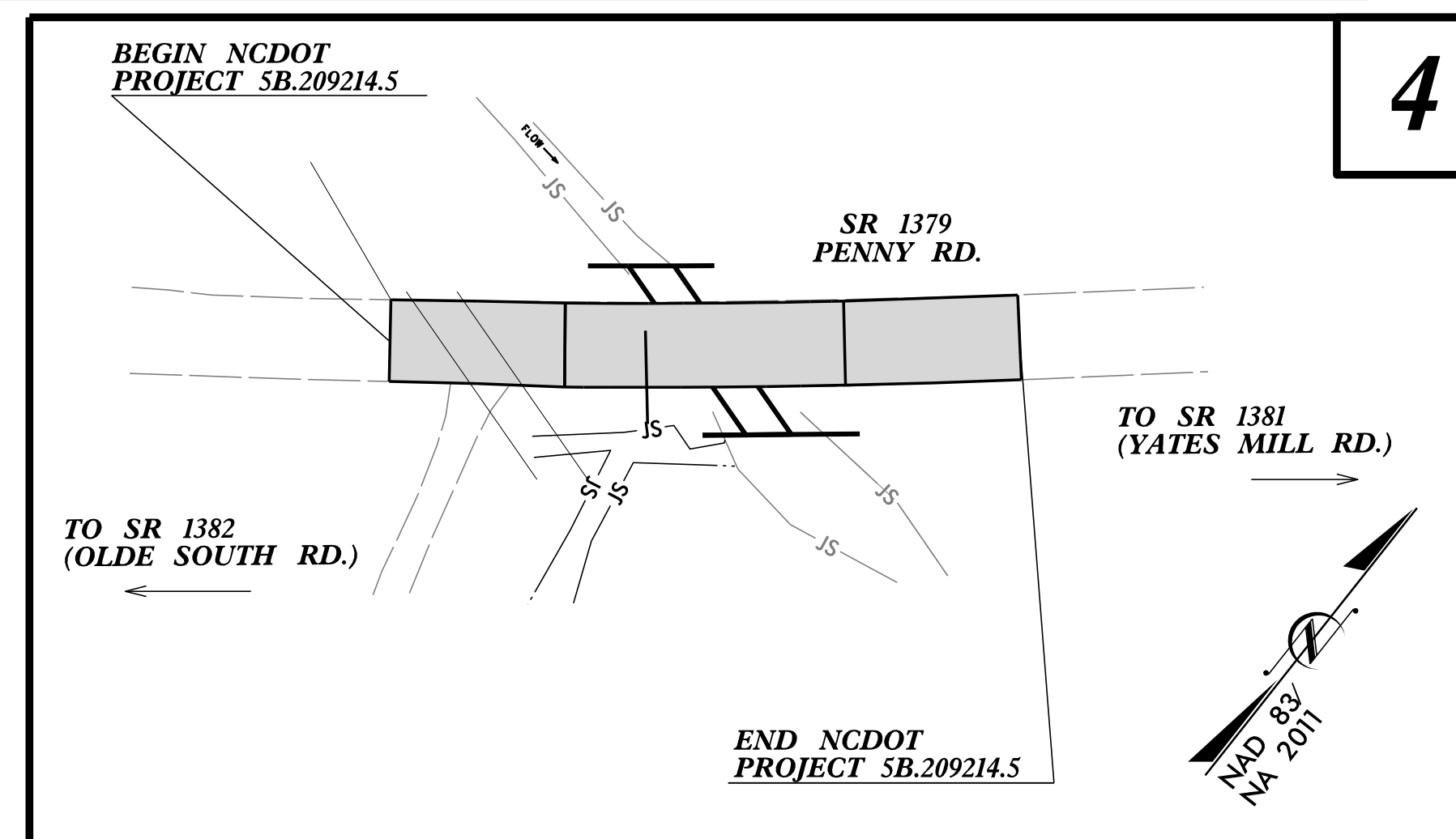
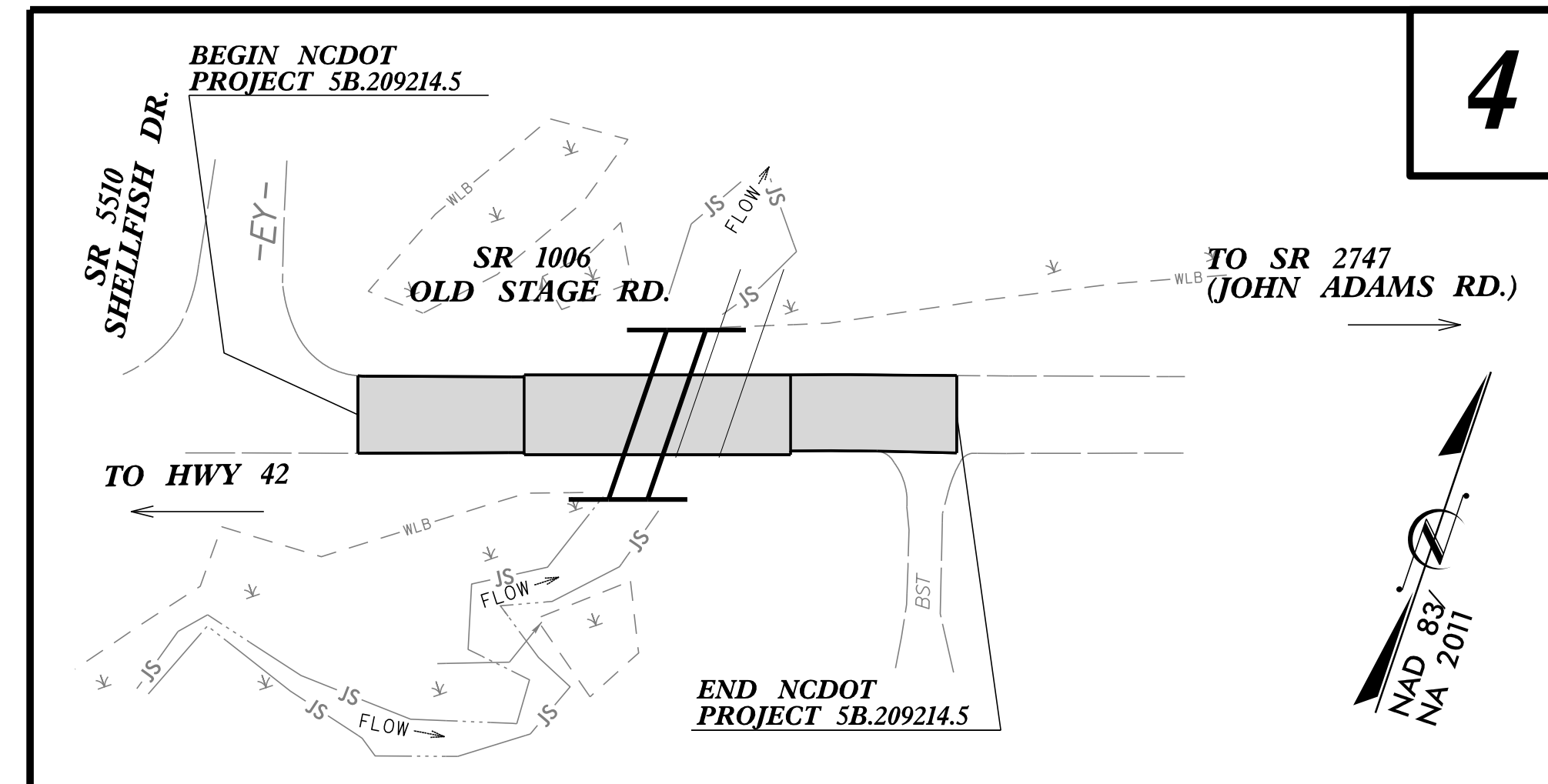
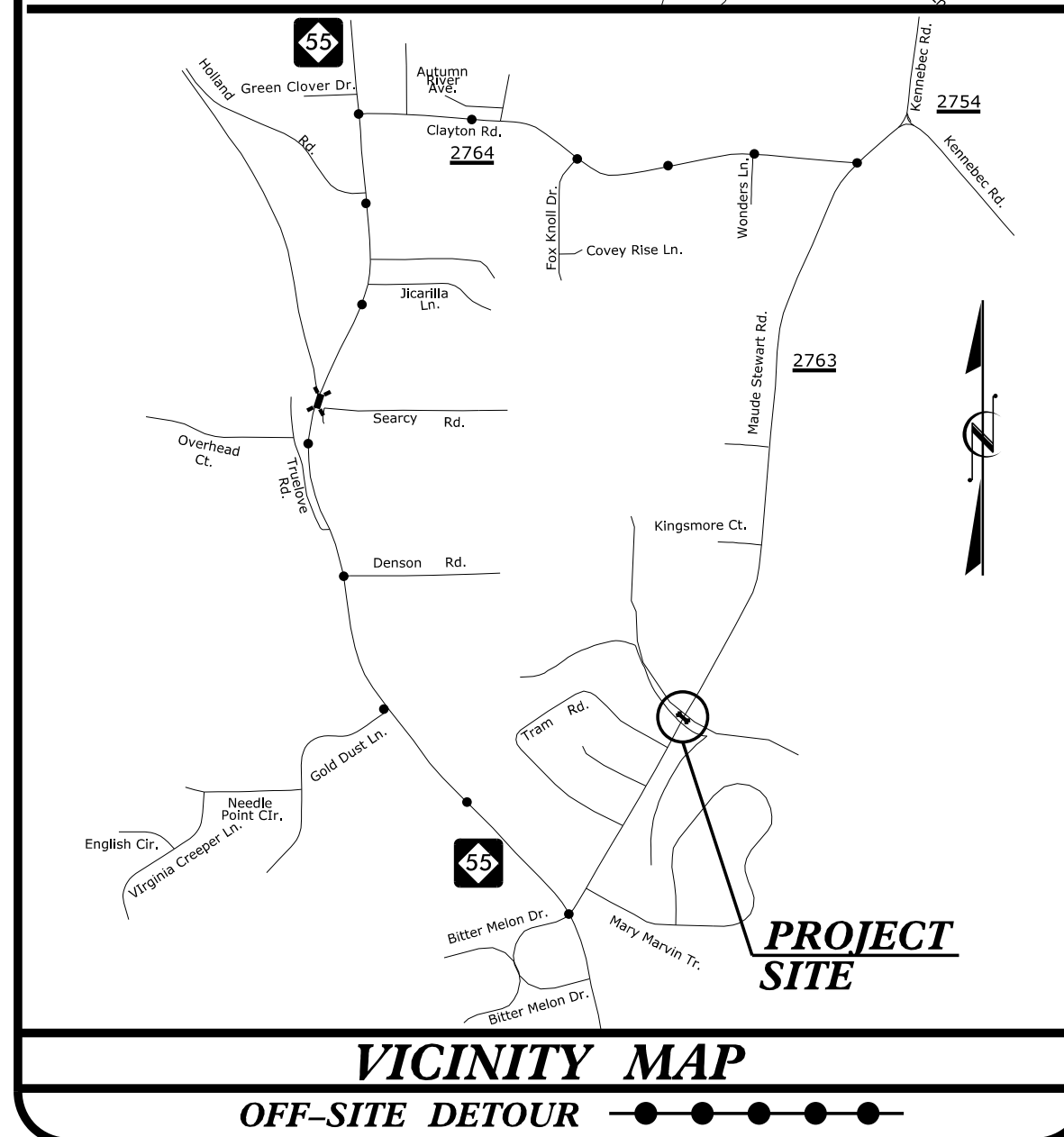
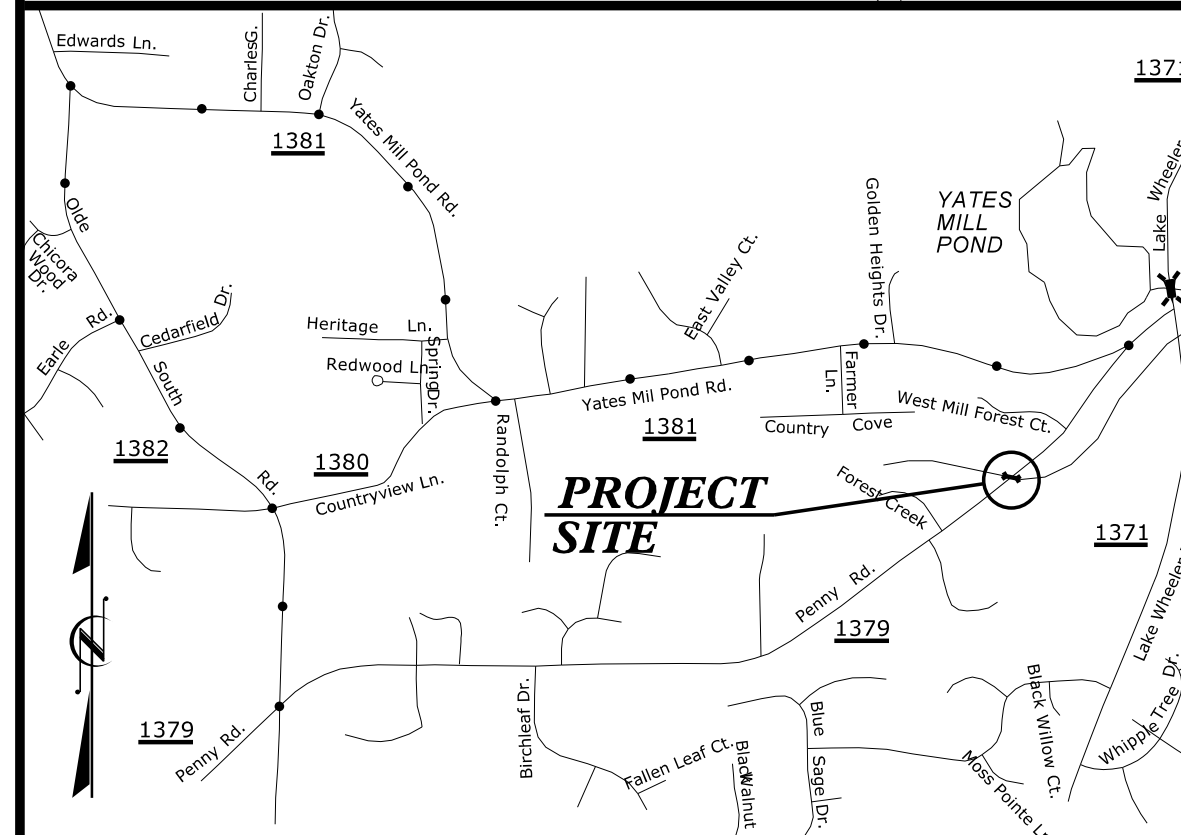
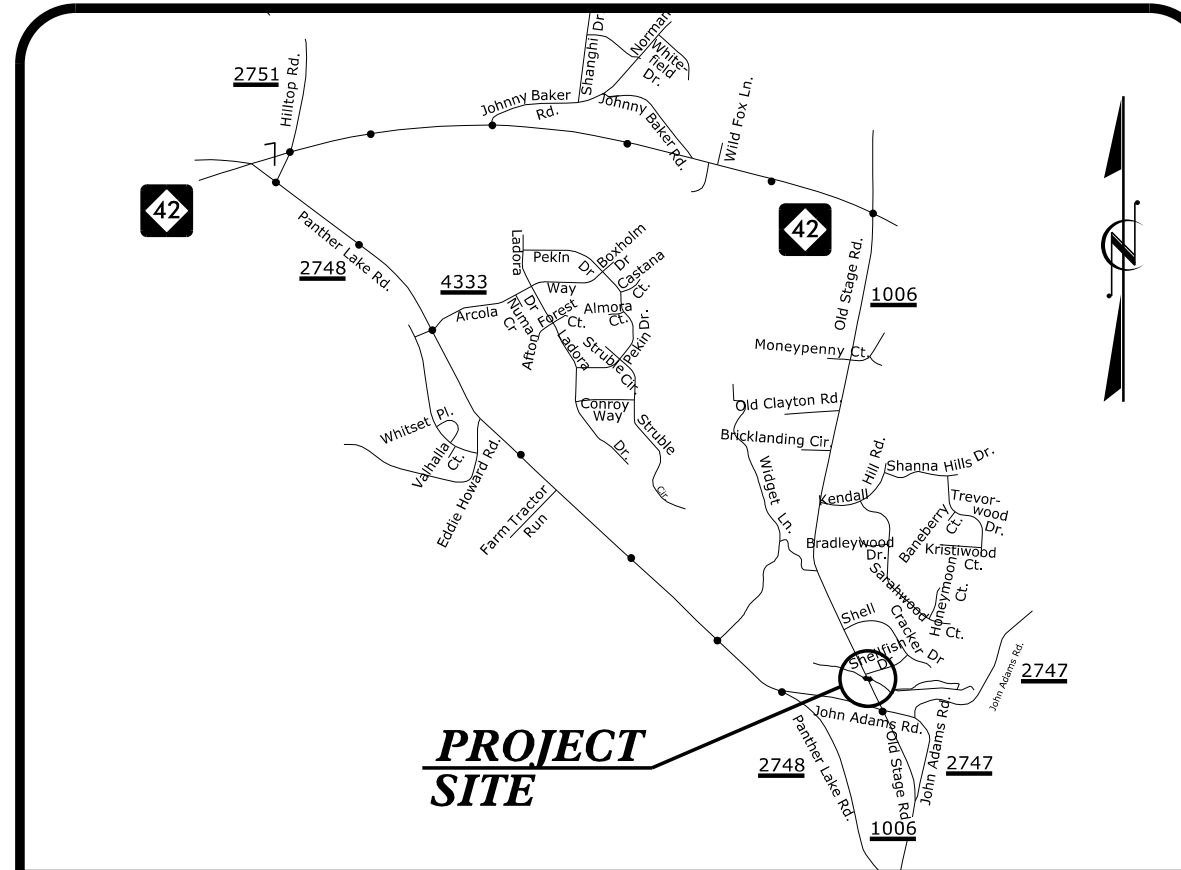
WAKE COUNTY
PLAN FOR PROPOSED
HIGHWAY EROSION CONTROL

**LOCATION: PIPE CROSSING ON SR 2763 (MAUDE STEWART ROAD)
PIPE CROSSING ON SR 1006 (OLD STAGE ROAD)
PIPE CROSSING ON SR 1379 (PENNY ROAD)**
TYPE OF WORK: GRADING, DRAINAGE, PAVING & STRUCTURE

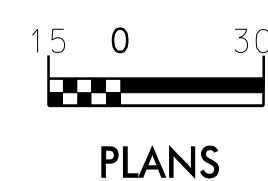
STATE	STATE PROJECT REFERENCE NO.	SHEET NO.	TOTAL SHEETS
N.C.	SB.209214.5	EC-1	
STATE PROJ. NO.	F.A. PROJ. NO.	DESCRIPTION	

EROSION AND SEDIMENT CONTROL MEASURES

Std. #	Description	Symbol
1630.03	Temporary Silt Ditch	TD
1630.05	Temporary Diversion	TD
1605.01	Temporary Silt Fence	III III III
1606.01	Special Sediment Control Fence	III III III
1622.01	Temporary Berms and Slope Drains	TBD
1630.02	Silt Basin Type B	[Symbol]
1633.01	Temporary Rock Silt Check Type-A	[Symbol]
	Temporary Rock Silt Check Type-A with Matting and Polyacrylamide (PAM)	[Symbol]
1633.02	Temporary Rock Silt Check Type-B	[Symbol]
	Wattle / Coir Fiber Wattle with Polyacrylamide (PAM)	[Symbol]
1654.01	Temporary Rock Sediment Dam Type-A	[Symbol]
1634.02	Temporary Rock Sediment Dam Type-B	[Symbol]
1635.01	Rock Pipe Inlet Sediment Trap Type-A	[Symbol]
1635.02	Rock Pipe Inlet Sediment Trap Type-B	[Symbol]
1650.04	Stilling Basin	[Symbol]
1650.06	Special Stilling Basin	[Symbol]
	Rock Inlet Sediment Trap:	
1632.01	Type A	A
1632.02	Type B	B
1632.05	Type C	C
	Skimmer Basin	[Symbol]
	Tiered Skimmer Basin	[Symbol]
	Infiltration Basin	[Symbol]



GRAPHIC SCALE



THESE EROSION AND SEDIMENT CONTROL PLANS COMPLY WITH THE REGULATIONS SET FORTH BY THE NCG-010000 GENERAL CONSTRUCTION PERMIT EFFECTIVE AUGUST 1, 2016 AND ISSUED BY THE NORTH CAROLINA DEPARTMENT OF ENVIRONMENT AND NATURAL RESOURCES DIVISION OF WATER RESOURCES.

Prepared In the Office of:
WETHERILL ENGINEERING, INC.
1223 JONES FRANKLIN ROAD
RALEIGH, NC 27606

Designed by:
HARMINDER SINGH 3519
NAME LEVEL III CERTIFICATION NO.

Reviewed In the Office of:
ROADSIDE ENVIRONMENTAL FIELD OPERATIONS
DIVISION 4 AND 5
1425 Rock Quarry Rd.
Suite 106
Raleigh, NC 27610
2018 STANDARD SPECIFICATIONS

Reviewed by:
DONALD PEARSON

Roadway Standard Drawings

The following roadway english standards as appear in "Roadway Standard Drawings"- Roadway Design Unit - N. C. Department of Transportation - Raleigh, N. C., dated January 2018 and the latest revision thereto are applicable to this project and by reference hereby are considered a part of these plans.

1604.01 Railroad Erosion Control Detail	1632.01 Rock Inlet Sediment Trap Type A
1605.01 Temporary Silt Fence	1632.02 Rock Inlet Sediment Trap Type B
1606.01 Special Sediment Control Fence	1632.03 Rock Inlet Sediment Trap Type C
1607.01 Gravel Construction Entrance	1633.01 Temporary Rock Silt Check Type A
1622.01 Temporary Berms and Slope Drains	1633.02 Temporary Rock Silt Check Type B
1630.01 Riser Basin	1634.01 Temporary Rock Sediment Dam Type A
1630.02 Silt Basin Type B	1634.02 Temporary Rock Sediment Dam Type B
1630.03 Temporary Silt Ditch	1635.01 Rock Pipe Inlet Sediment Trap Type A
1630.04 Stilling Basin	1635.02 Rock Pipe Inlet Sediment Trap Type B
1630.05 Temporary Diversion	1640.01 Coir Fiber Baffle
1630.06 Special Stilling Basin	1645.01 Temporary Stream Crossing
1631.01 Matting Installation	