

**TIP PROJECT: U-4902D**

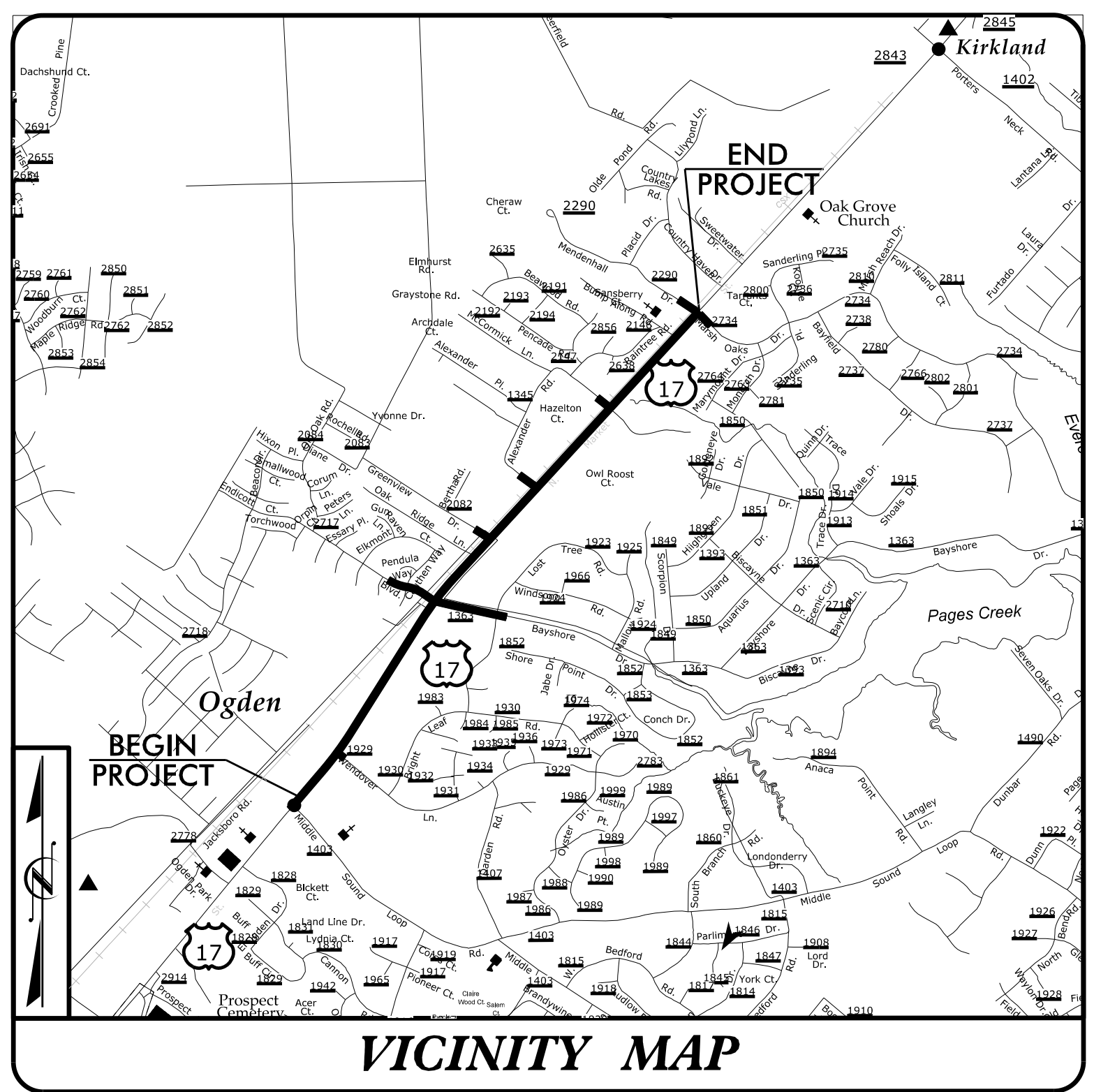
STATE OF NORTH CAROLINA  
DIVISION OF HIGHWAYS

T.I.P. NO.	SHEET NO.
U-4902D	UO-1

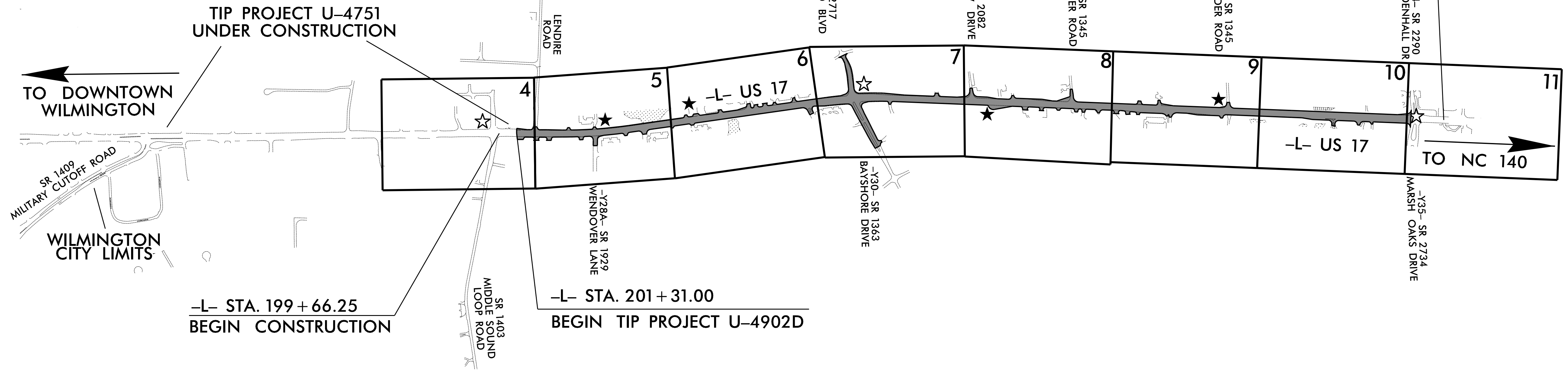
**NOTE:**  
ALL UTILITY WORK SHOWN ON THIS SHEET WILL BE DONE BY OTHERS. NO PAYMENT WILL BE MADE TO THE CONTRACTOR FOR UTILITY WORK SHOWN ON THIS SHEET.

**UTILITIES BY OTHERS PLANS  
NEW HANOVER COUNTY**

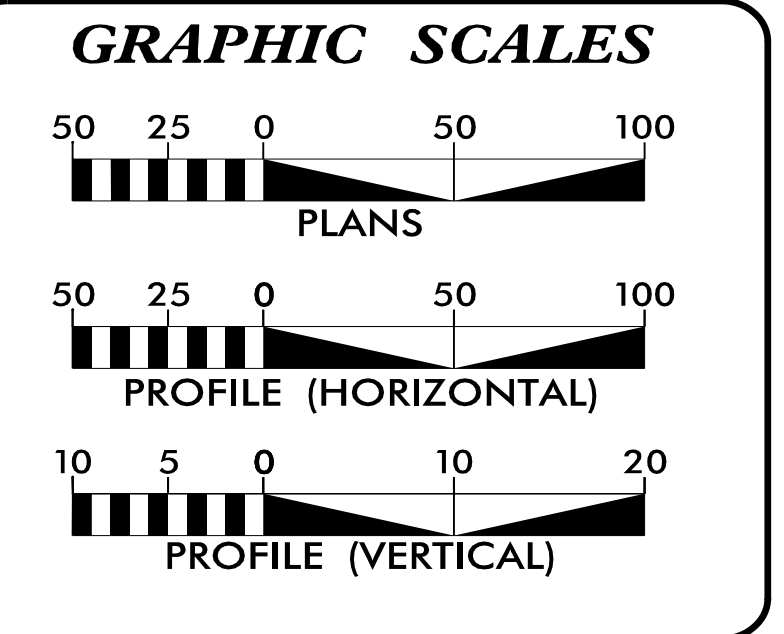
**LOCATION: US 17 (MARKET STREET) FROM  
SR 1403 (MIDDLE SOUND LOOP ROAD)  
TO SR 2290 (MENDENHALL DRIVE)/  
SR 2734 (MARSH OAKS DRIVE)**  
**TYPE OF WORK: UTILITY RELOCATION OF POWER,  
COMMUNICATION, CATV AND GAS**



**VICINITY MAP**



	EXISTING SIGNAL
	PROPOSED SIGNAL



**INDEX OF SHEETS**

SHEET NO.:	DESCRIPTION:
UO-1	TITLE SHEET
UO-02 THRU UO-09	UBO PLAN SHEETS

**UTILITY OWNERS WITH CONFLICTS**

(A) POWER - DUKE ENERGY
(B) PHONE - AT&T
(C) PHONE - AT&T
(D) CATV - SPECTRUM
(E) COMM - LUMOS
(F) COMM - MCNC
(G) COMM - CENTURYLINK
(H) GAS - PNG

PREPARED IN THE OFFICE OF:

**M A Engineering Consultants, Inc.**  
598 East Chatham Street Suite 137 Cary, NC 27511  
Phone: 919.297.0220 Fax: 919.297.0221

NC License: F-0160

**WEBB WHITE** PROJECT UTILITY COORDINATOR

**DIVISION OF HIGHWAYS  
DIVISION 3**  
5501 BARBADOS BLVD.  
CASTLE HAYNE, NC 28429

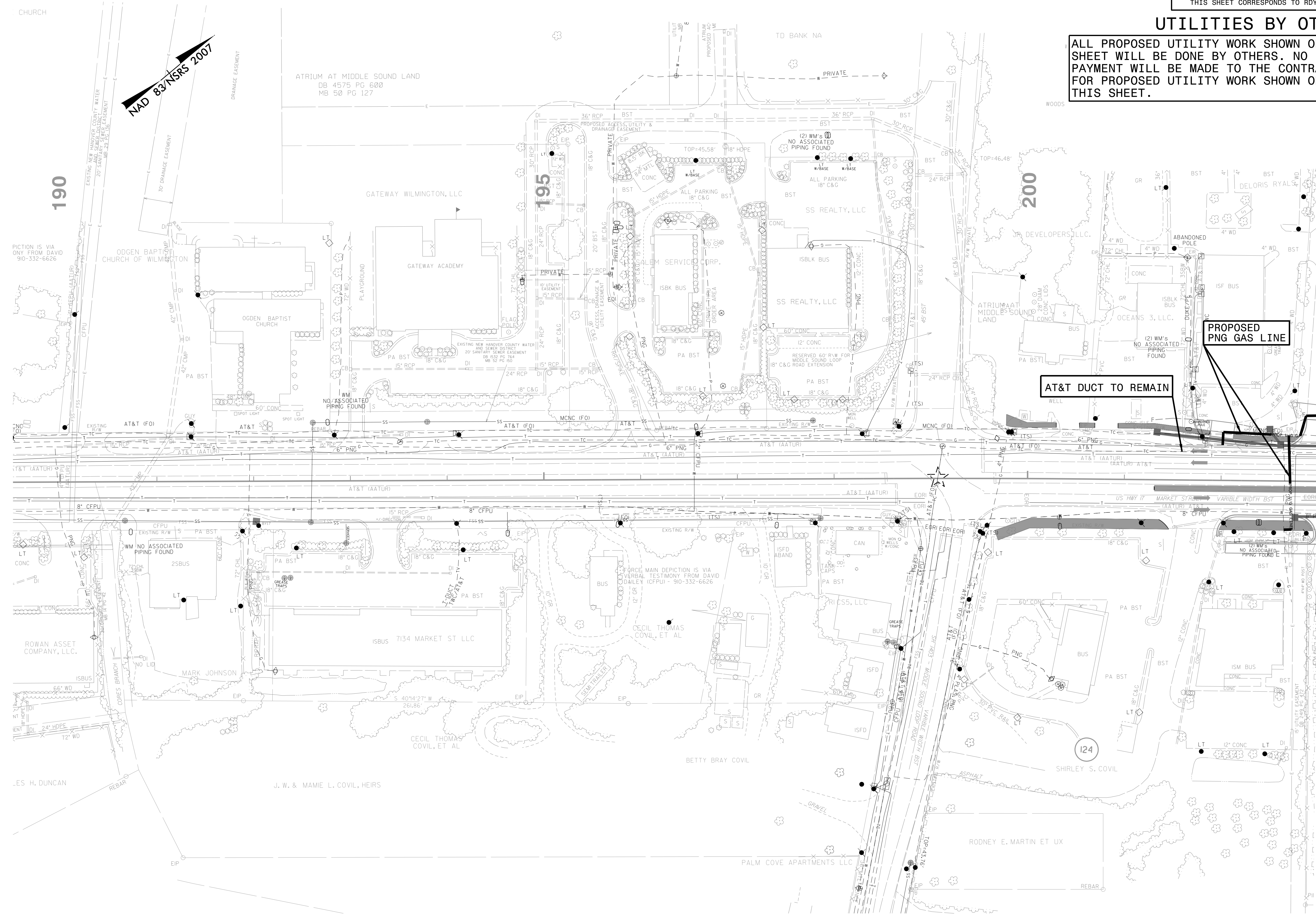
**KEVIN BOWEN, PE** DIVISION CONSTRUCTION ENGINEER

**LONNY SLEEPER** DIVISION UTILITY COORDINATOR

9/13/2018 3:30:14 PM P:\JOBS\0696\020\U4902D\Utilities\U4902D\_UO\_TSH.dgn

### UTILITIES BY OTHERS

ALL PROPOSED UTILITY WORK SHOWN ON THIS SHEET WILL BE DONE BY OTHERS. NO PAYMENT WILL BE MADE TO THE CONTRACTOR FOR PROPOSED UTILITY WORK SHOWN ON THIS SHEET.

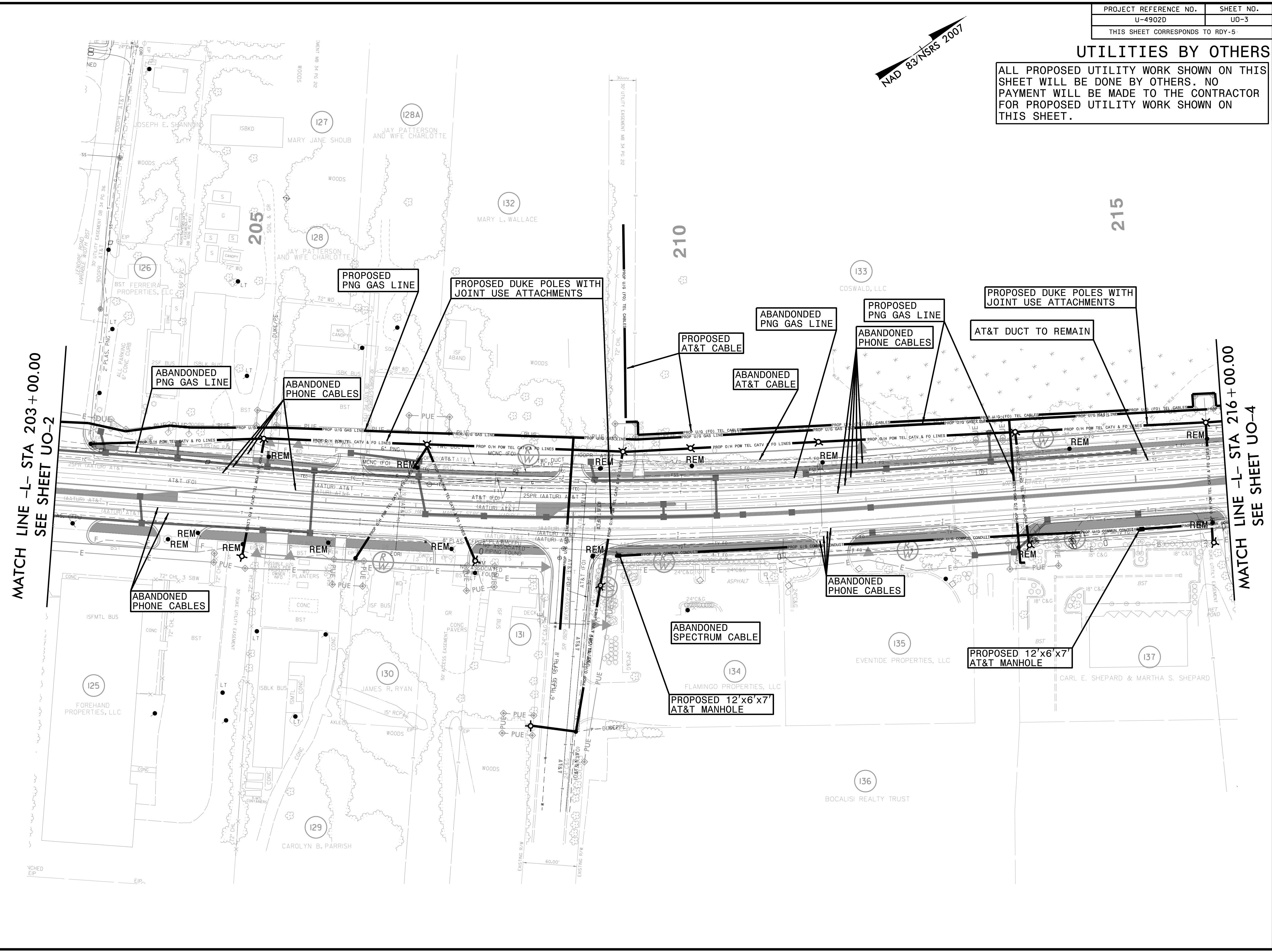


MATCH LINE -L- STA 203 + 00.00  
SEE SHEET UO-3



### UTILITIES BY OTHERS

ALL PROPOSED UTILITY WORK SHOWN ON THIS SHEET WILL BE DONE BY OTHERS. NO PAYMENT WILL BE MADE TO THE CONTRACTOR FOR PROPOSED UTILITY WORK SHOWN ON THIS SHEET.



MATCH LINE -L- STA 203+00.00  
SEE SHEET UO-2

MATCH LINE -L- STA 216+00.00  
SEE SHEET UO-4

5/14/99

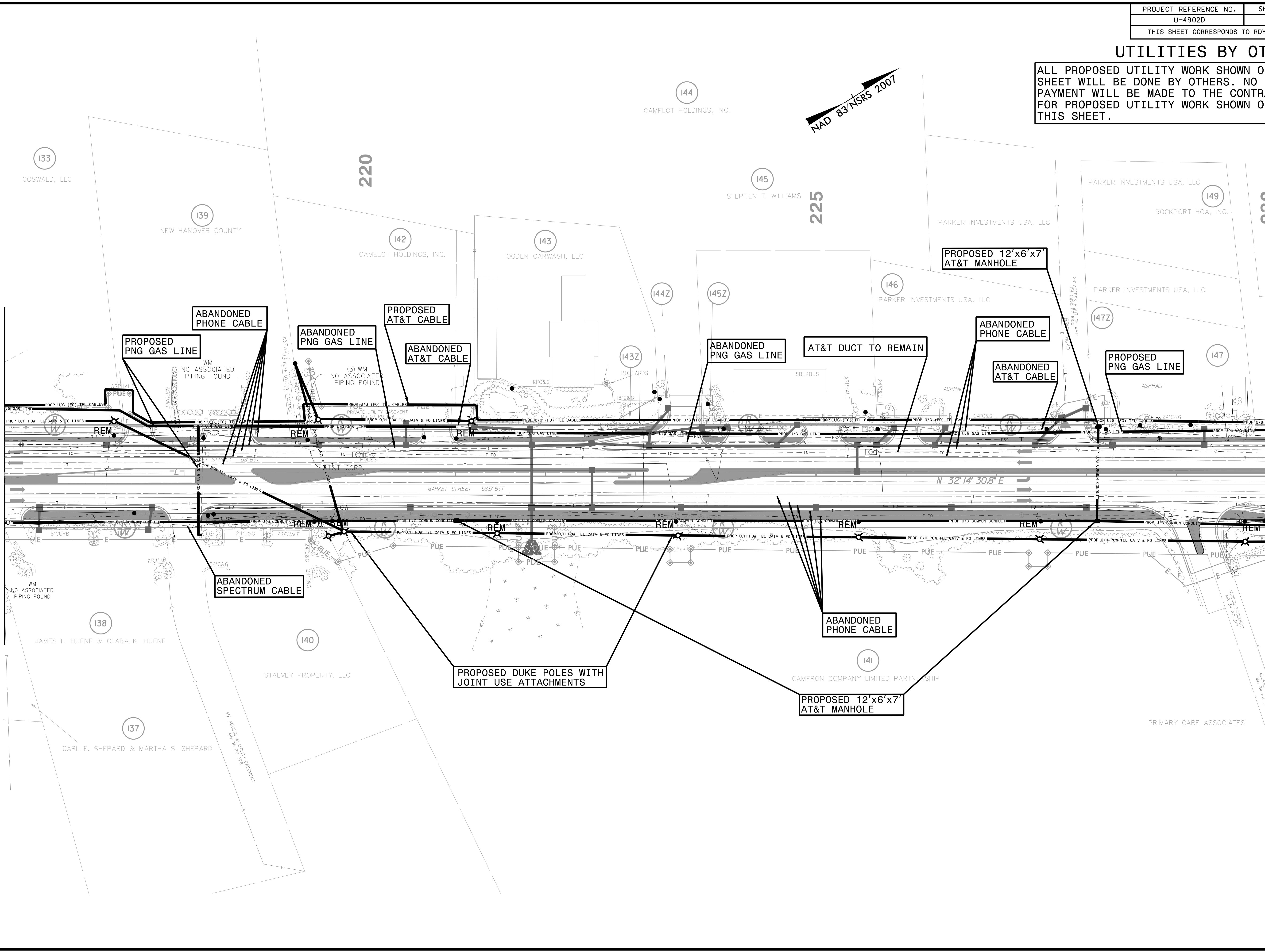
### UTILITIES BY OTHERS

ALL PROPOSED UTILITY WORK SHOWN ON THIS SHEET WILL BE DONE BY OTHERS. NO PAYMENT WILL BE MADE TO THE CONTRACTOR FOR PROPOSED UTILITY WORK SHOWN ON THIS SHEET.

5/14/99

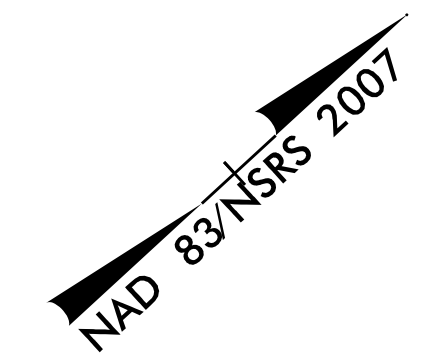
MATCH LINE -L- STA 216+00.00  
SEE SHEET UO-3

MATCH LINE -L- STA 230+00.00  
SEE SHEET UO-5



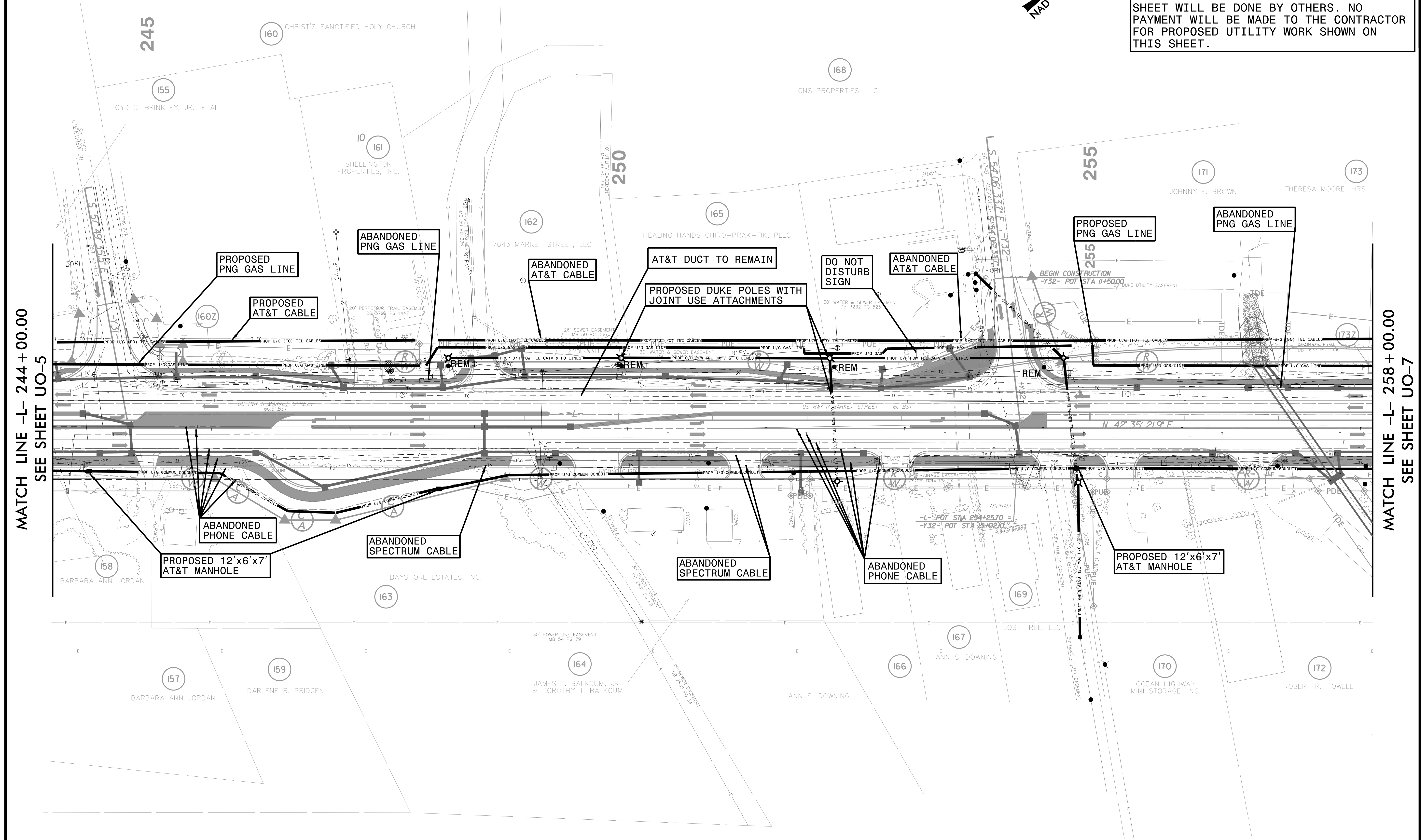






### UTILITIES BY OTHERS

ALL PROPOSED UTILITY WORK SHOWN ON THIS SHEET WILL BE DONE BY OTHERS. NO PAYMENT WILL BE MADE TO THE CONTRACTOR FOR PROPOSED UTILITY WORK SHOWN ON THIS SHEET.



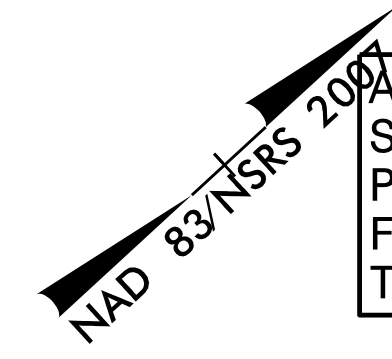
MATCH LINE -L- 244+00.00  
SEE SHEET UO-5

MATCH LINE -L- 258+00.00  
SEE SHEET UO-7



### UTILITIES BY OTHERS

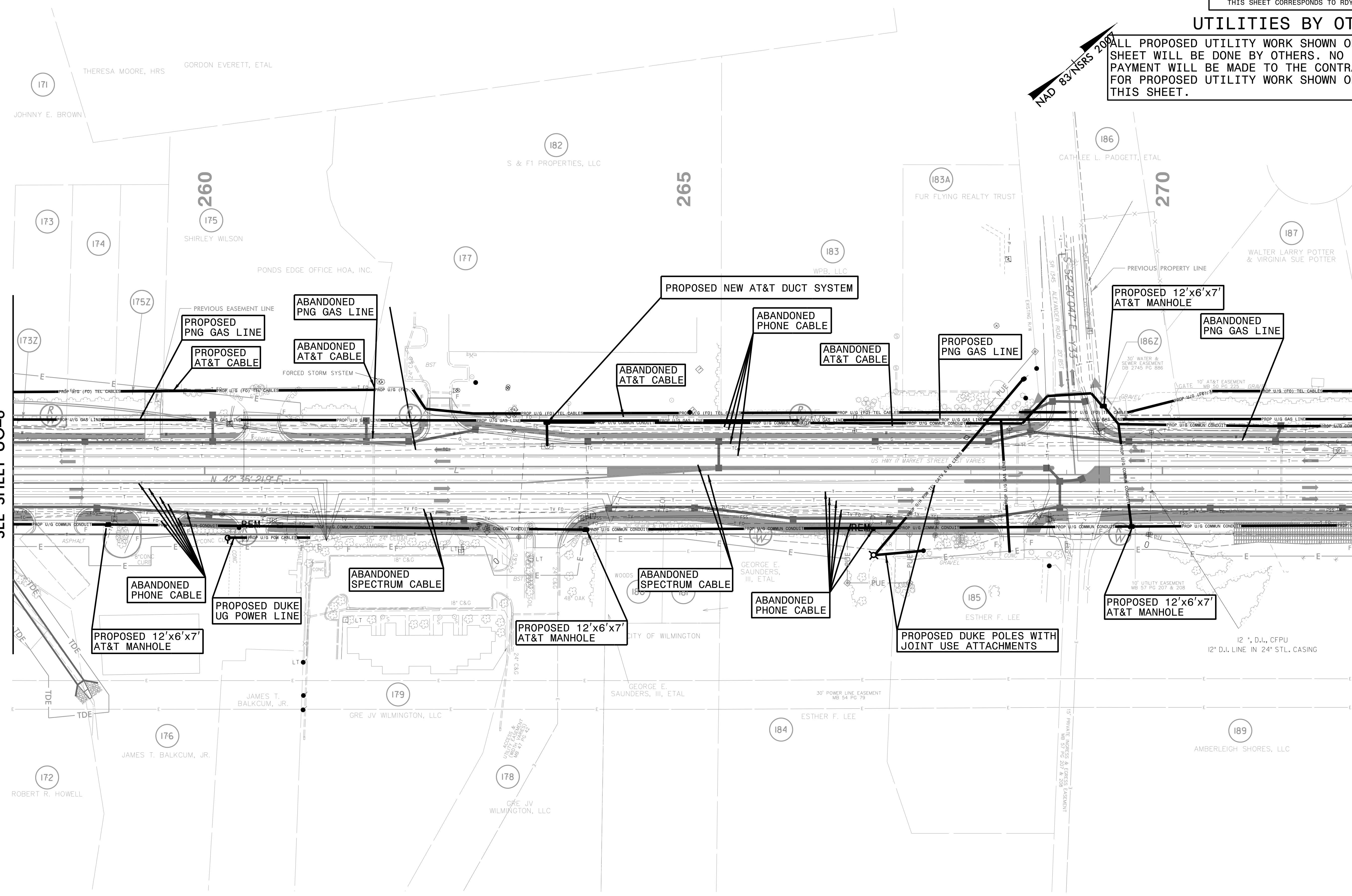
ALL PROPOSED UTILITY WORK SHOWN ON THIS SHEET WILL BE DONE BY OTHERS. NO PAYMENT WILL BE MADE TO THE CONTRACTOR FOR PROPOSED UTILITY WORK SHOWN ON THIS SHEET.



5/14/99

MATCH LINE -L- STA 258+00.00  
SEE SHEET UO-6

MATCH LINE -L- STA 272+00.00  
SEE SHEET UO-8



171 THERESA MOORE, HRS GORDON EVERETT, ETAL  
 172 ROBERT R. HOWELL  
 173  
 174  
 175 SHIRLEY WILSON  
 176 JAMES T. BALKCUM, JR.  
 177 PONDS EDGE OFFICE HOA, INC.  
 178 GRE JV WILMINGTON, LLC  
 179 GRE JV WILMINGTON, LLC  
 180  
 181  
 182 S & F1 PROPERTIES, LLC  
 183 WPB, LLC  
 184 ESTHER F. LEE  
 185 ESTHER F. LEE  
 186 CATHLEEN L. PADGETT, ETAL  
 187 WALTER LARRY POTTER & VIRGINIA SUE POTTER  
 188  
 189 AMBERLEIGH SHORES, LLC

PROPOSED PNG GAS LINE  
 ABANDONED PNG GAS LINE  
 ABANDONED AT&T CABLE  
 ABANDONED AT&T CABLE  
 ABANDONED PHONE CABLE  
 PROPOSED NEW AT&T DUCT SYSTEM  
 ABANDONED AT&T CABLE  
 ABANDONED AT&T CABLE  
 PROPOSED PNG GAS LINE  
 ABANDONED PHONE CABLE  
 ABANDONED SPECTRUM CABLE  
 ABANDONED SPECTRUM CABLE  
 ABANDONED PHONE CABLE  
 PROPOSED DUKE UG POWER LINE  
 PROPOSED 12'x6'x7' AT&T MANHOLE  
 PROPOSED 12'x6'x7' AT&T MANHOLE  
 PROPOSED 12'x6'x7' AT&T MANHOLE  
 PROPOSED DUKE POLES WITH JOINT USE ATTACHMENTS

PREVIOUS EASEMENT LINE  
 FORCED STORM SYSTEM  
 ASPHALT  
 CONCRETE  
 18" C&G  
 12" D.I. LINE IN 24" STL. CASING

US HWY 17 MARKET STREET COST VARIES

15' PRIVATE ACCESS & EGRESS EASEMENT MB 57 PG 207 & 208

30' POWER LINE EASEMENT MB 54 PG 79

10' UTILITY EASEMENT MB 57 PG 207 & 208

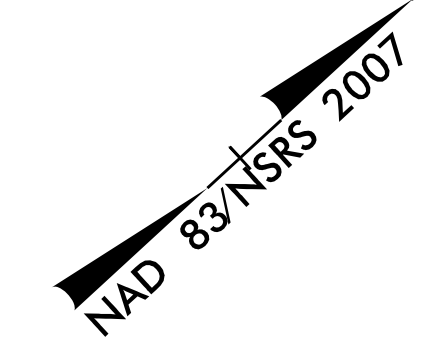
30' WATER & SEWER EASEMENT DB 2745 PG 886

10' AT&T EASEMENT MB 50 PG 226

12" D.I., CFPU

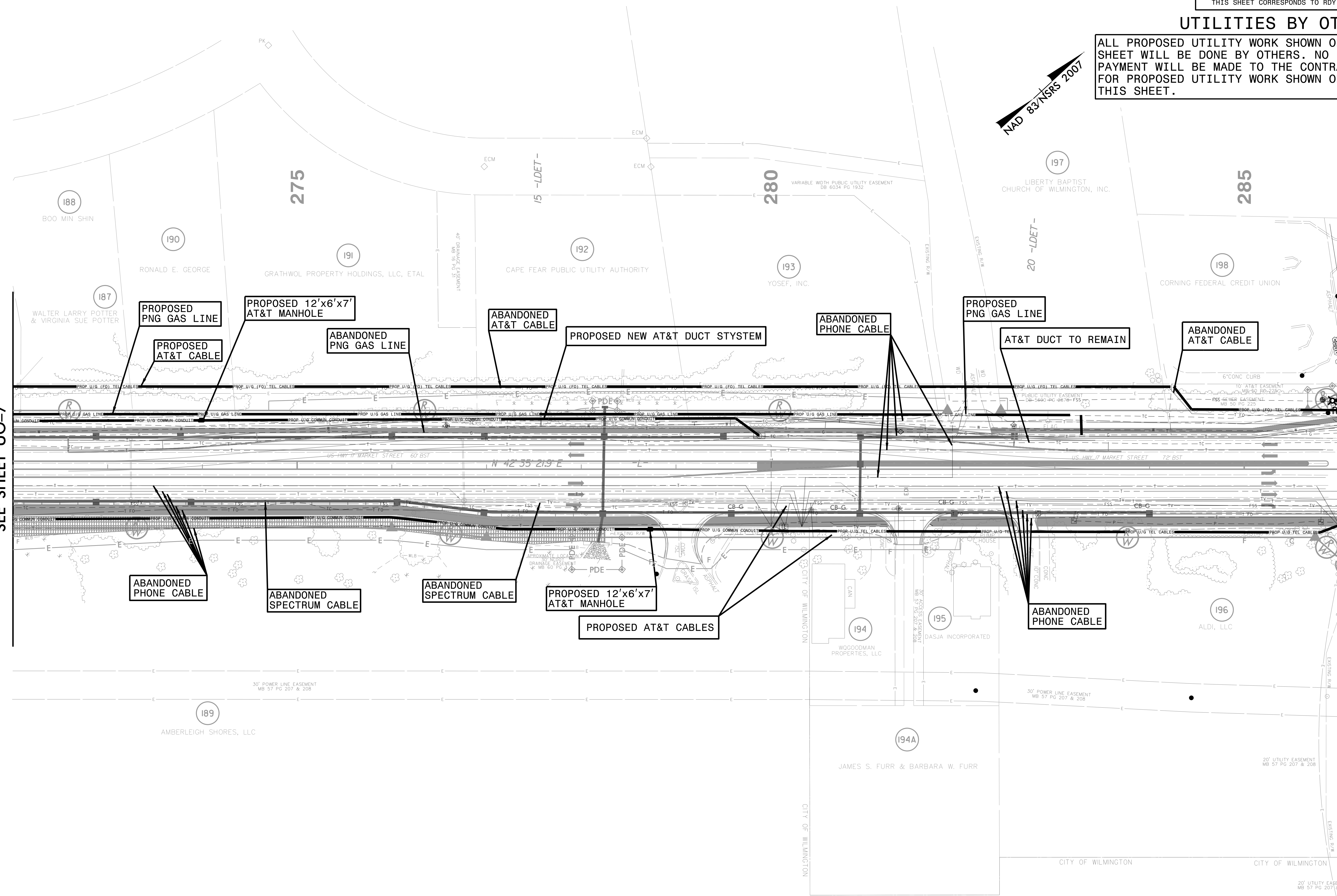
### UTILITIES BY OTHERS

ALL PROPOSED UTILITY WORK SHOWN ON THIS SHEET WILL BE DONE BY OTHERS. NO PAYMENT WILL BE MADE TO THE CONTRACTOR FOR PROPOSED UTILITY WORK SHOWN ON THIS SHEET.



MATCH LINE -L- STA 272 + 00.00  
SEE SHEET UO-7

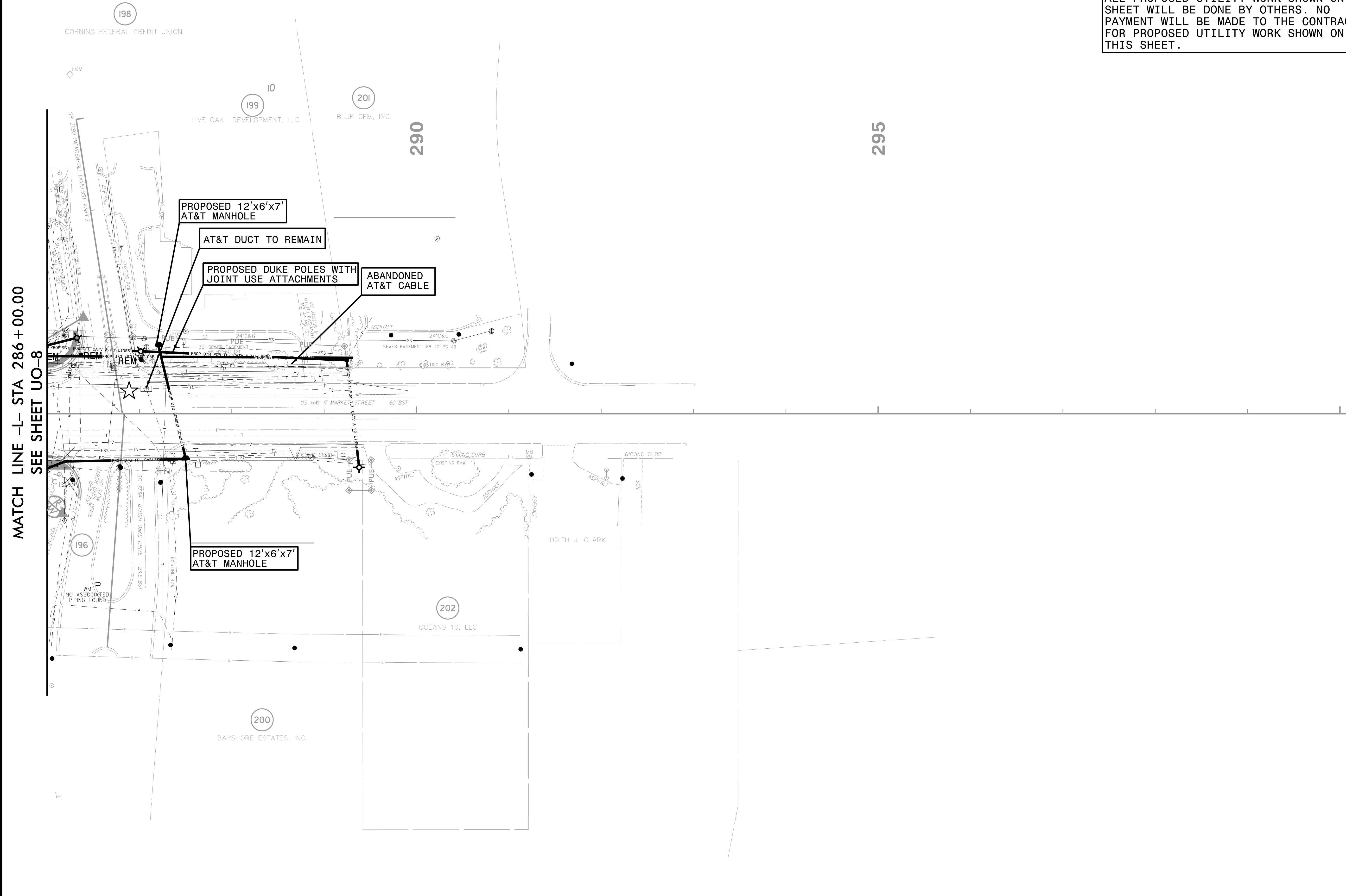
MATCH LINE -L- STA 286 + 00.00  
SEE SHEET UO-9





### UTILITIES BY OTHERS

ALL PROPOSED UTILITY WORK SHOWN ON THIS SHEET WILL BE DONE BY OTHERS. NO PAYMENT WILL BE MADE TO THE CONTRACTOR FOR PROPOSED UTILITY WORK SHOWN ON THIS SHEET.



MATCH LINE -L- STA 286 + 00.00  
SEE SHEET UO-8

290

295

198

199

201

CORNING FEDERAL CREDIT UNION

LIVE OAK DEVELOPMENT, LLC

BLUE GEM, INC.

PROPOSED 12'x6'x7' AT&T MANHOLE

AT&T DUCT TO REMAIN

PROPOSED DUKE POLES WITH JOINT USE ATTACHMENTS

ABANDONED AT&T CABLE

PROPOSED 12'x6'x7' AT&T MANHOLE

196

202

200

NO ASSOCIATED PIPING FOUND

OCEANS 10, LLC

BAYSHORE ESTATES, INC.

JUDITH J. CLARK

US HWY 17 MARKET STREET 60' BST

SR 2734 WASHO OAKS DRIVE 24.5' BST

SR 2734 WASHO OAKS DRIVE 24.5' BST

SR 2734 WASHO OAKS DRIVE 24.5' BST

SR 2734 WASHO OAKS DRIVE 24.5' BST

SR 2734 WASHO OAKS DRIVE 24.5' BST

SR 2734 WASHO OAKS DRIVE 24.5' BST

SR 2734 WASHO OAKS DRIVE 24.5' BST

SR 2734 WASHO OAKS DRIVE 24.5' BST

SR 2734 WASHO OAKS DRIVE 24.5' BST

SR 2734 WASHO OAKS DRIVE 24.5' BST

SR 2734 WASHO OAKS DRIVE 24.5' BST

SR 2734 WASHO OAKS DRIVE 24.5' BST

SR 2734 WASHO OAKS DRIVE 24.5' BST

SR 2734 WASHO OAKS DRIVE 24.5' BST

SR 2734 WASHO OAKS DRIVE 24.5' BST

SR 2734 WASHO OAKS DRIVE 24.5' BST