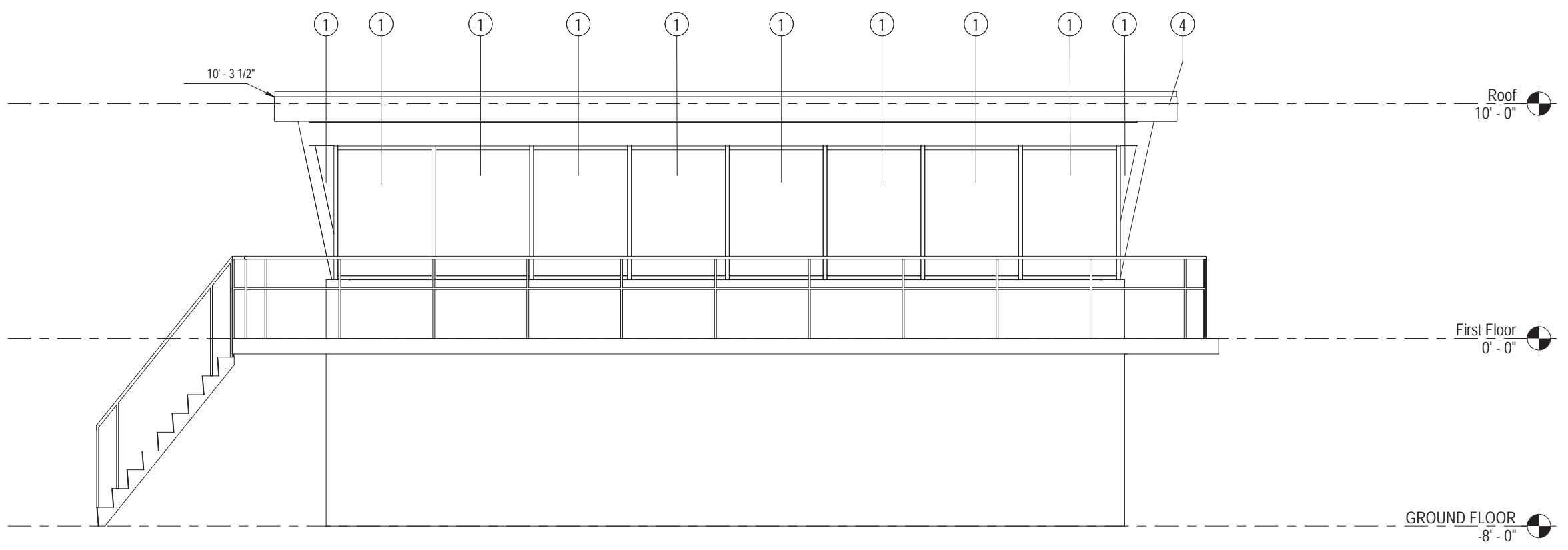
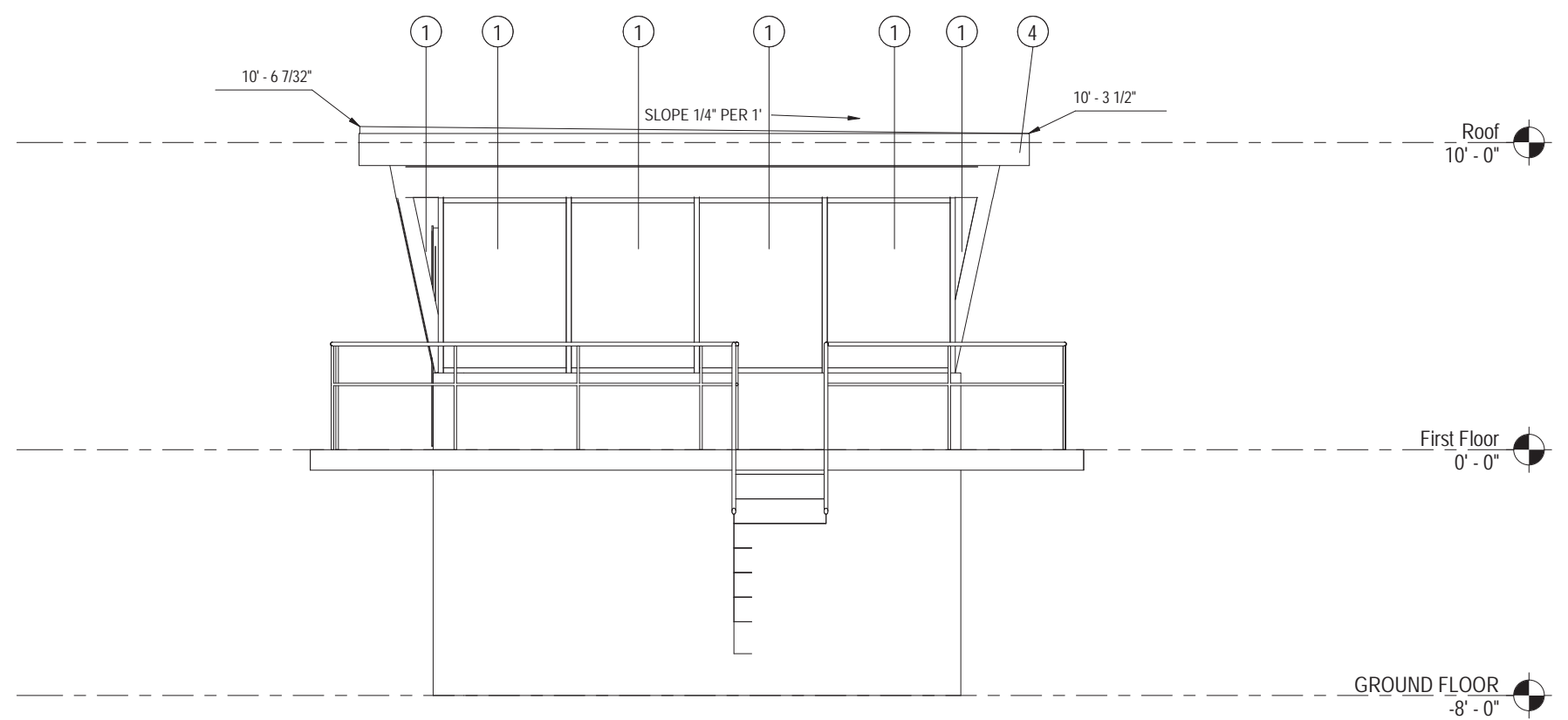


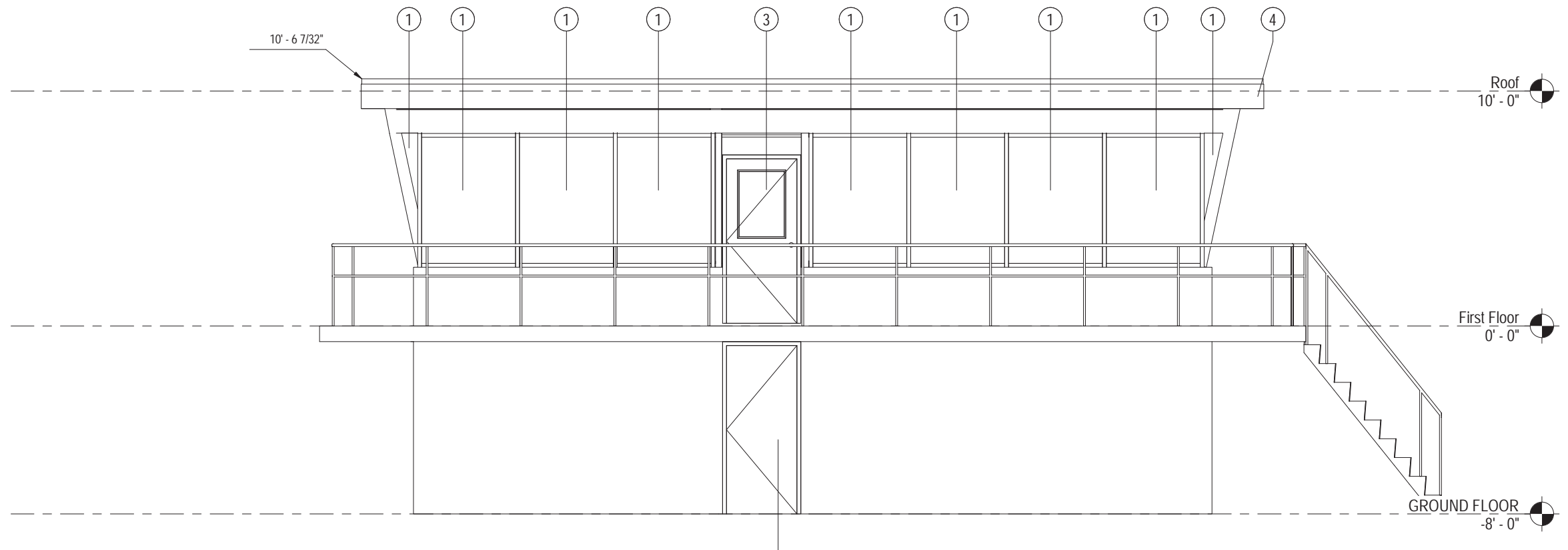
ELEVATION LEGEND	
TAG	ELEVATION NOTE
1	WINDOW REPLACEMENT
2	RAILING MESH
3	EXTERIOR DOOR
4	ROOF REPLACEMENT



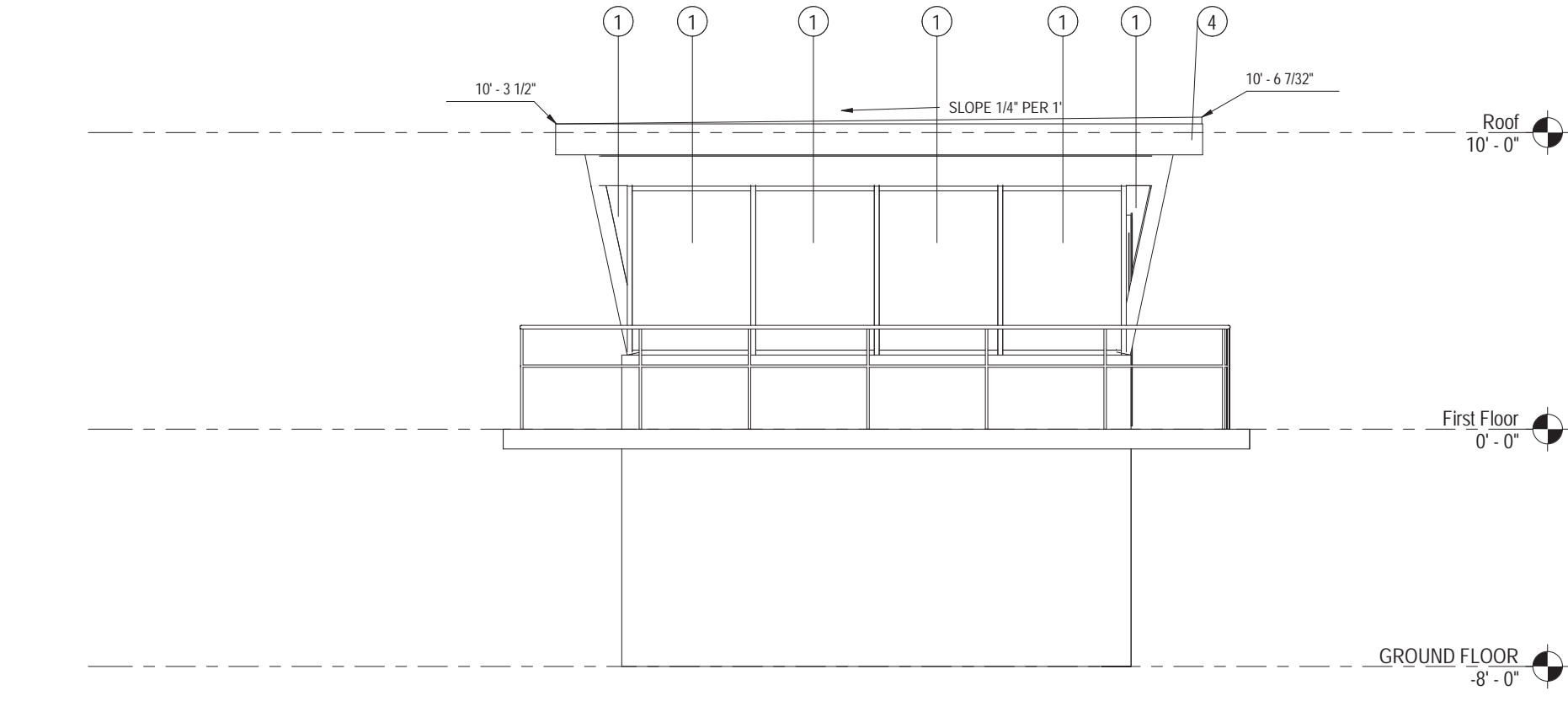
1 EXTERIOR ELEVATION - A  
A2.1 1/4" = 1'-0"



2 EXTERIOR ELEVATION - B  
A2.1 1/4" = 1'-0"

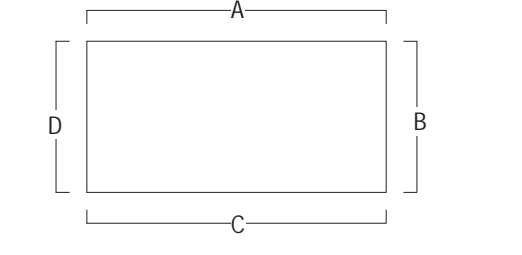


3 EXTERIOR ELEVATION - C  
A2.1 1/4" = 1'-0"



4 EXTERIOR ELEVATION - D  
A2.1 1/4" = 1'-0"

ALL REPORTS, PLANS SPECIFICATIONS AND COMPUTER FILES RELATING TO THIS PROJECT ARE THE PROPERTY OF CRABTREE, ROHRBAUGH & ASSOCIATES. CRABTREE, ROHRBAUGH & ASSOCIATES RESERVES ALL COMMON LAW, STATUTE AND OTHER RESERVED RIGHTS INCLUDING THE COPYRIGHT THESE TO REPRODUCTION OF THE MATERIAL HEREIN OR SUBSTANTIAL USE WITHOUT WRITTEN PERMISSION OF CRABTREE, ROHRBAUGH & ASSOCIATES. VIOLATION OF THE COPYRIGHT LAWS OF THE UNITED STATES AND WILL BE SUBJECT TO LEGAL PROSECUTION. © CRABTREE, ROHRBAUGH & ASSOCIATES, INC. 2018



KEY PLAN - EXTERIOR ELEVATION

REVISIONS		
NO.	DATE	DESCRIPTION OF CHANGES

**CRABTREE ROHRBAUGH & ASSOCIATES - ARCHITECTS**  
 BALTIMORE, MARYLAND  
 CHARLOTTESVILLE, VIRGINIA  
 WHITE SULPHUR SPRINGS, WEST VIRGINIA  
 www.cra-architects.com  
 401 EAST WINDING HILL ROAD  
 MECHANICSBURG PA 17055  
 717-458-0272

RENOVATIONS TO THE ISABEL HOLMES BRIDGE



OVERALL EXTERIOR ELEVATIONS  
 PLOT SCALE: As Indicated  
 FILENAME:  
 DATE: November 9, 2018

PROJECT 3133  
 A2.1