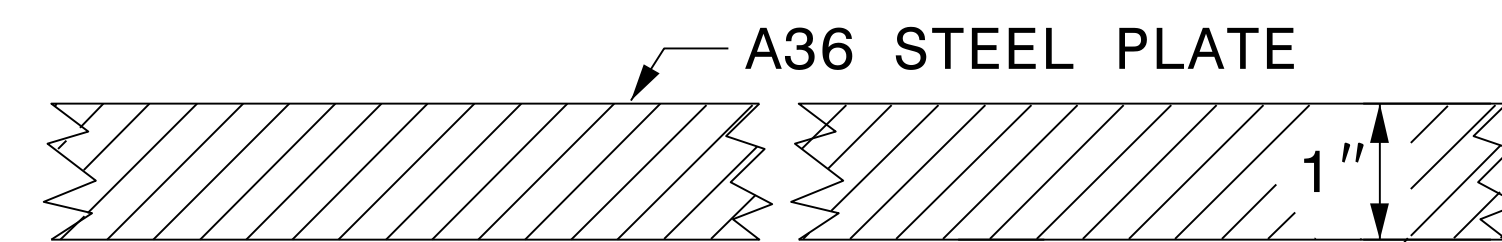


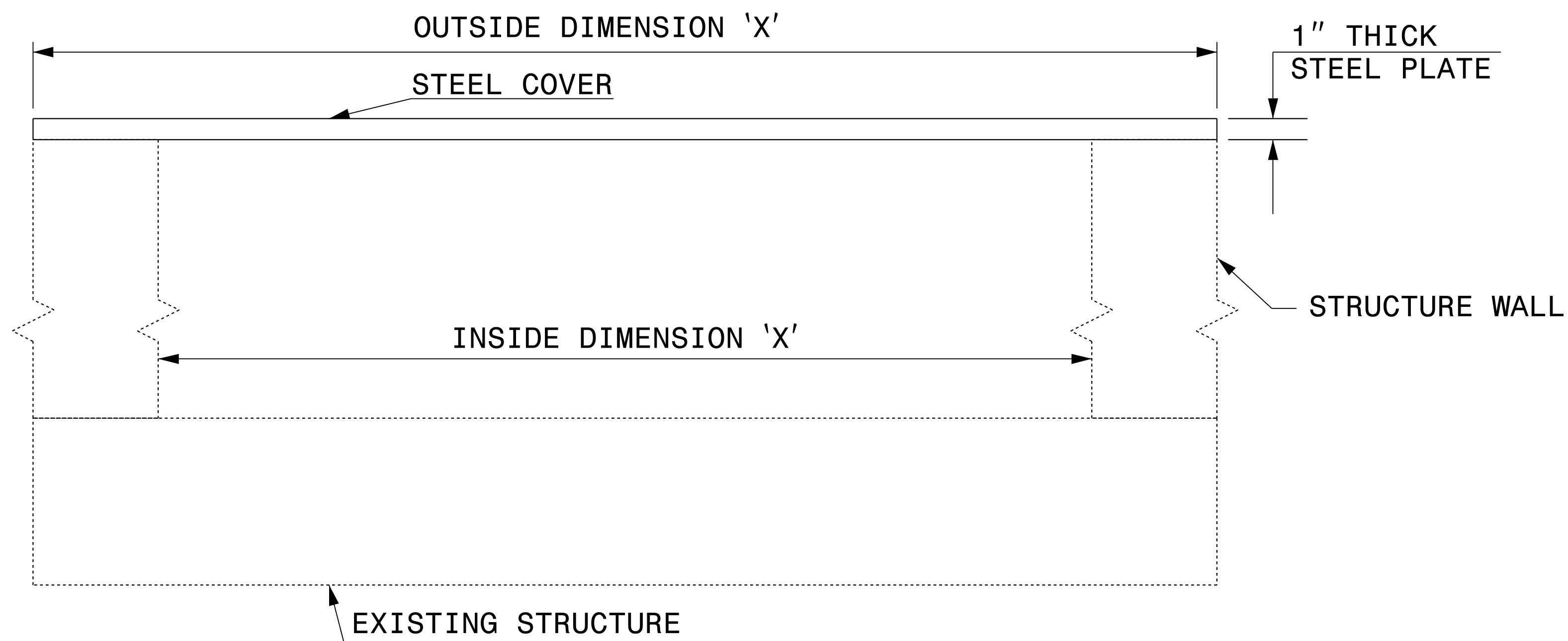
**GENERAL NOTES:**

- USE GRADE A36 STEEL
- STEEL COVERS ARE FOR TEMPORARY USE DURING PHASE CONSTRUCTION.
- FILL SHALL BE PLACED DIRECTLY OVER THE STEEL PLATES.
- SEE ROADWAY PLANS AND PROVISIONS FOR LOCATIONS
- QUANTITIES TO BE PAID FOR AT THE UNIT PRICE BID PER EACH.

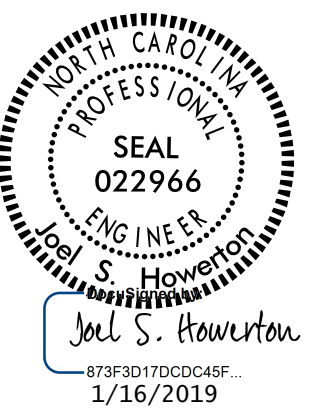


**SECTION VIEW OF STEEL TOP PLATE**

**PLAN VIEWS**



**ELEVATION VIEWS**



DOCUMENT NOT CONSIDERED FINAL  
UNLESS ALL SIGNATURES COMPLETED

<b>CONTRACT STANDARDS AND DEVELOPMENT UNIT</b>	
Office 919-707-6950 FAX 919-250-4119	
<b>DETAIL OF TEMPORARY 1" STEEL COVER</b>	
ORIGINAL BY: E.E. WARD	DATE: 2-2-98
MODIFIED BY:	DATE:
CHECKED BY:	DATE:
FILE SPEC.: eric:/usr/details/metric/stand/stlcvr2.dgn	