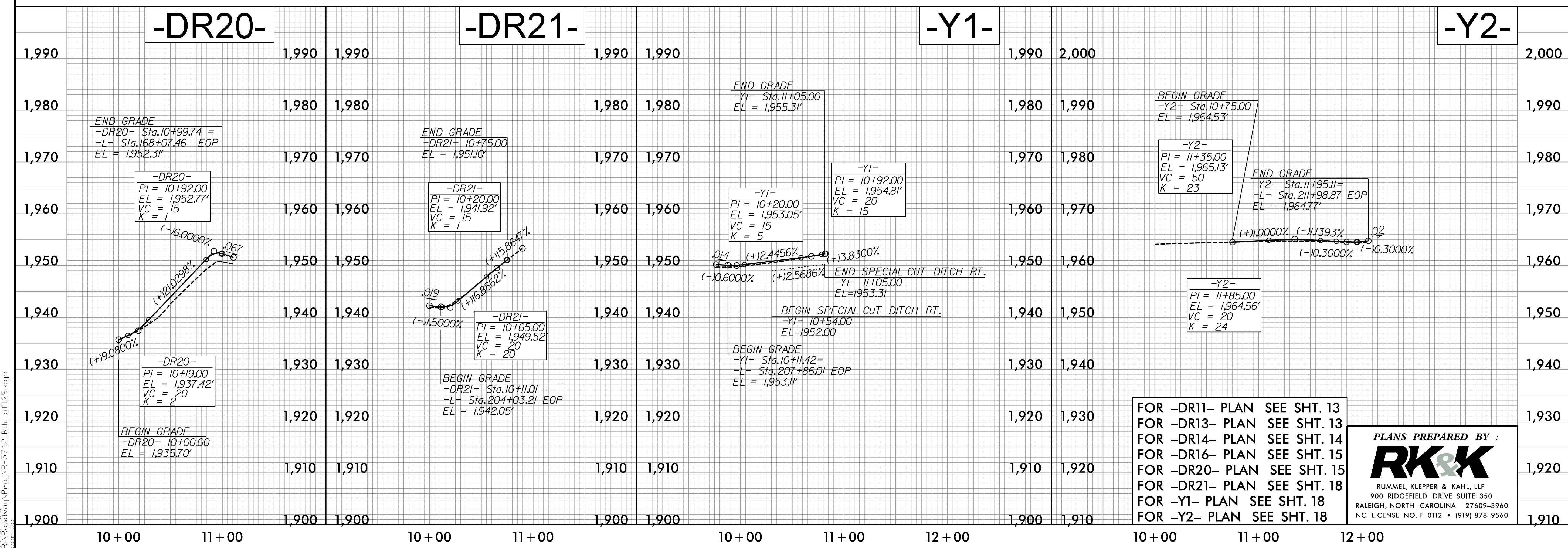
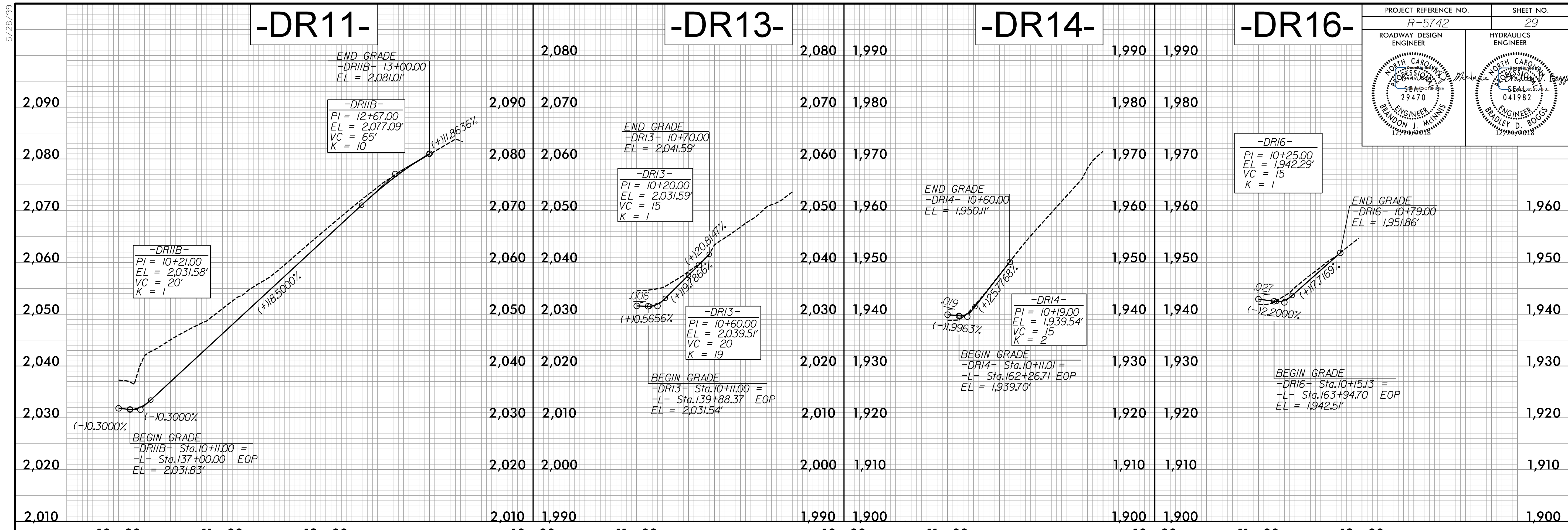


**This electronic collection of documents is provided
for the convenience of the user
and is Not a Certified Document –**

**The documents contained herein were originally issued
and sealed by the individuals whose names and license
numbers appear on each page, on the dates appearing
with their signature on that page.**

**This file or an individual page
shall not be considered a certified document.**

| | |
|---------------------------------|---------------------|
| PROJECT REFERENCE NO. R-5742 | SHEET NO. 29 |
| ROADWAY DESIGN ENGINEER | HYDRAULICS ENGINEER |
| | |



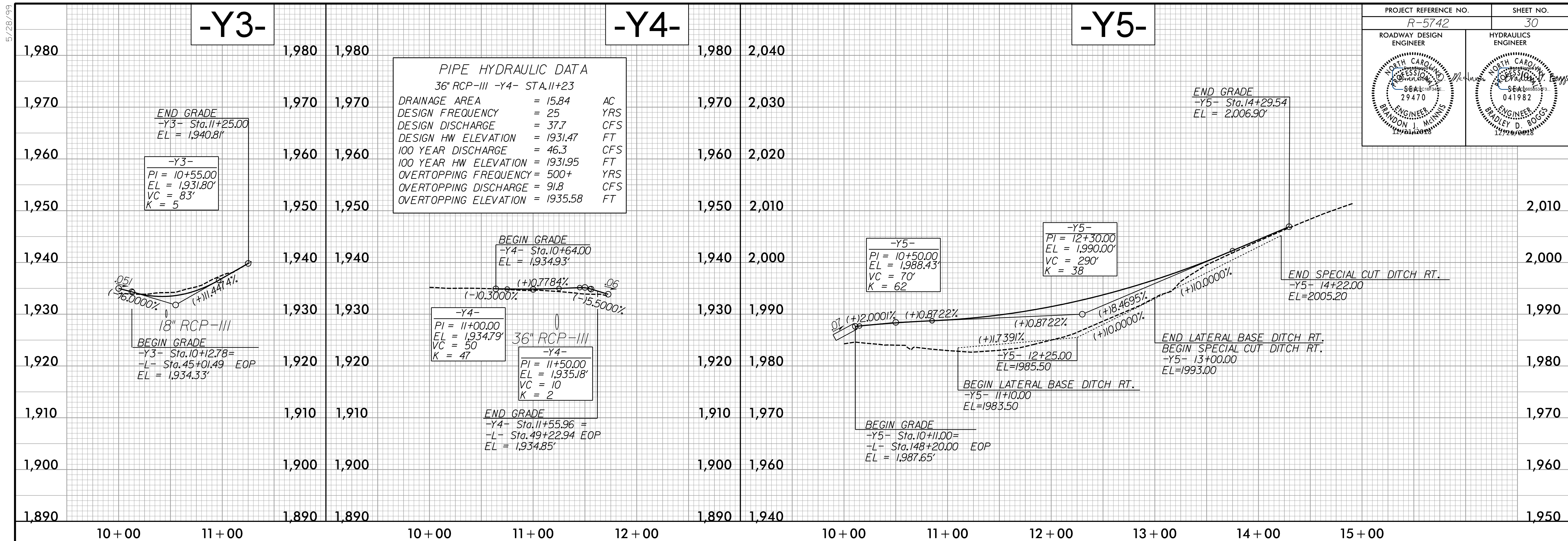
FOR -DR11- PLAN SEE SHT. 13
 FOR -DR13- PLAN SEE SHT. 13
 FOR -DR14- PLAN SEE SHT. 14
 FOR -DR16- PLAN SEE SHT. 15
 FOR -DR20- PLAN SEE SHT. 15
 FOR -DR21- PLAN SEE SHT. 18
 FOR -Y1- PLAN SEE SHT. 18
 FOR -Y2- PLAN SEE SHT. 18

PLANS PREPARED BY :

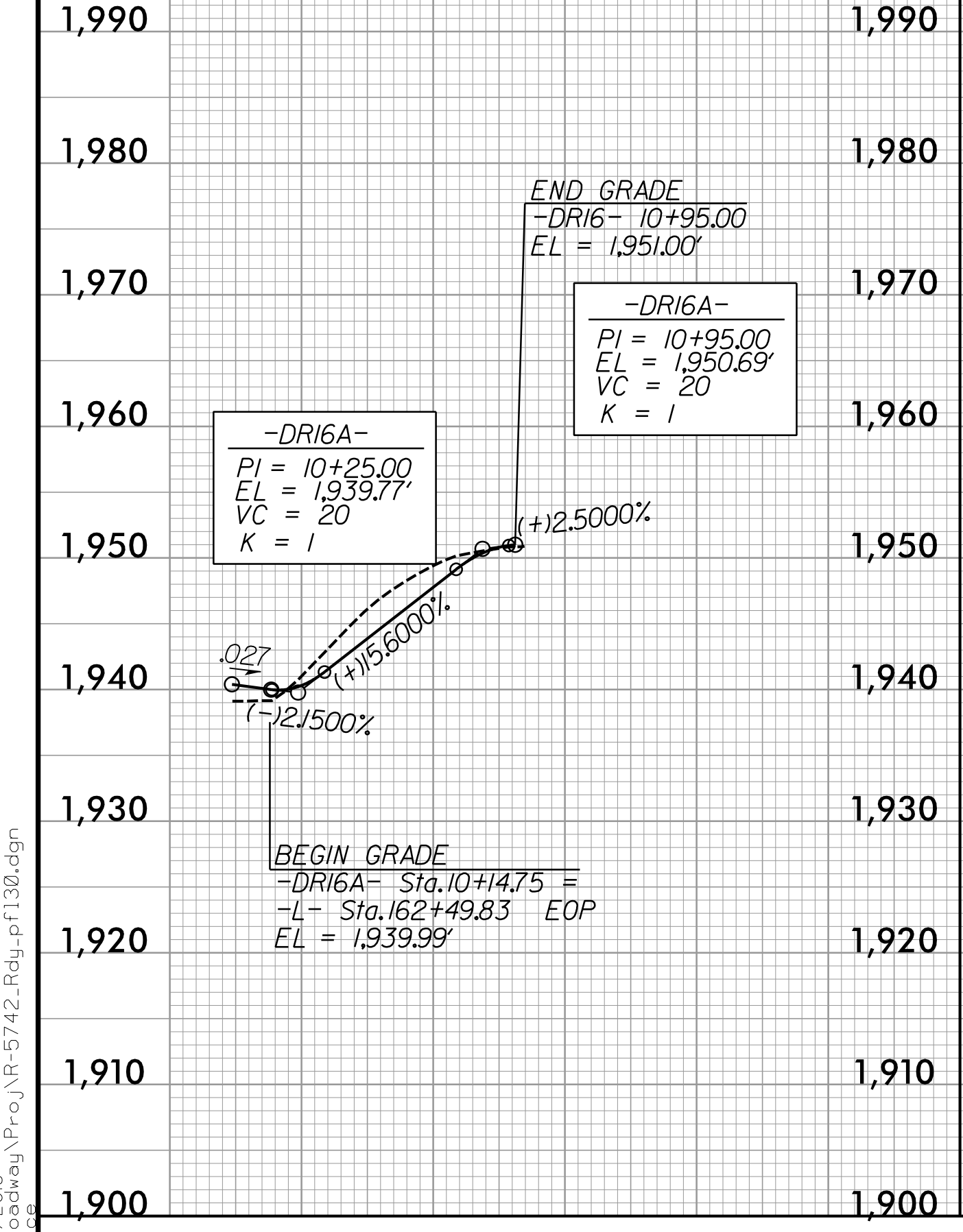
RUMMEL, KLEPPER & KAHL, LLP
 900 RIDGEFIELD DRIVE SUITE 350
 RALEIGH, NORTH CAROLINA 27609-3960
 NC LICENSE NO. F-0112 • (919) 878-9560

5/28/2018 12:41:20 PM C:\Users\pcoj\OneDrive\Documents\Projects\R-5742-Rdly-pl129.dgn

| | |
|---|---|
| PROJECT REFERENCE NO. R-5742 | SHEET NO. 30 |
| ROADWAY DESIGN ENGINEER BRANDON J. MANNING 12/28/2018 | HYDRAULICS ENGINEER BRADLEY D. BOGES 12/28/2018 |



-DR16A-



FOR -Y3- PLAN SEE SHT. 6
 FOR -Y4- PLAN SEE SHT. 6
 FOR -Y5- PLAN SEE SHT. 13

PLANS PREPARED BY :

RK&K

RUMMEL, KLEPPER & KAHL, LLP
 900 RIDGEFIELD DRIVE SUITE 350
 RALEIGH, NORTH CAROLINA 27609-3960
 NC LICENSE NO. F-0112 • (919) 878-9560

5/28/19
 12/28/2018
 R:\Projects\2018\Roadway\Projects\R-5742-Rdly-pl130.dgn