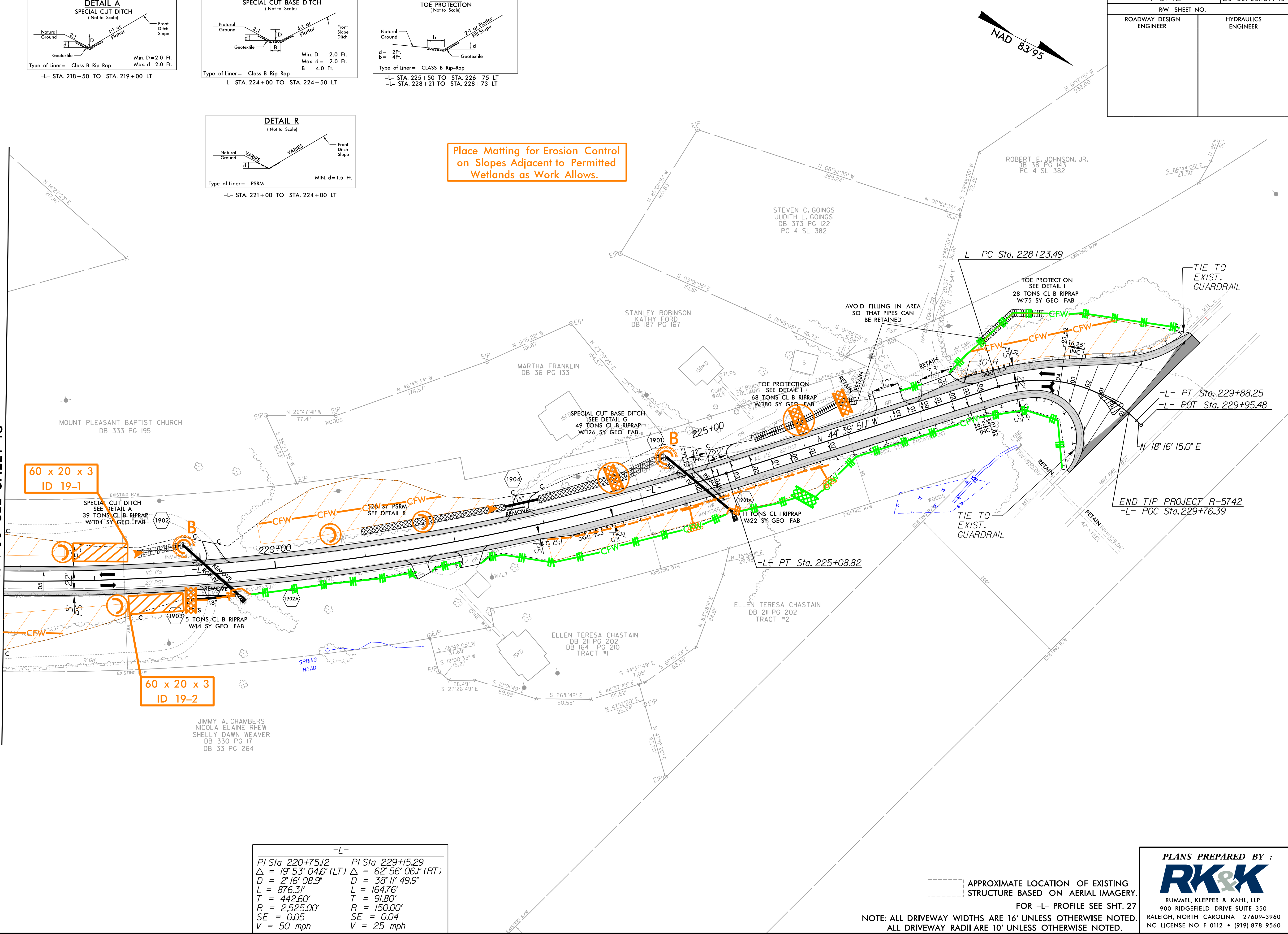


Place Matting for Erosion Control on Slopes Adjacent to Permitted Wetlands as Work Allows.

MATCHLINE -L- STA. 217+00 SEE SHEET 18



-L-	-L-
PI Sta 220+75.12	PI Sta 229+15.29
$\Delta = 19^{\circ} 53' 04.6''$ (LT)	$\Delta = 62^{\circ} 56' 06.1''$ (RT)
D = 2' 16' 08.9"	D = 38' 11' 49.9"
L = 876.31'	L = 1647.6'
T = 442.60'	T = 91.80'
R = 2,525.00'	R = 150.00'
SE = 0.05	SE = 0.04
V = 50 mph	V = 25 mph

APPROXIMATE LOCATION OF EXISTING STRUCTURE BASED ON AERIAL IMAGERY. FOR -L- PROFILE SEE SHT. 27

NOTE: ALL DRIVEWAY WIDTHS ARE 16' UNLESS OTHERWISE NOTED. ALL DRIVEWAY RADII ARE 10' UNLESS OTHERWISE NOTED.

PLANS PREPARED BY:

**RK&K**

RUMMEL, KLEPPER & KAHL, LLP  
 900 RIDGEFIELD DRIVE SUITE 350  
 RALEIGH, NORTH CAROLINA 27609-3960  
 NC LICENSE NO. F-0112 • (919) 878-9560

8/17/19 8/21/2018 C:\Users\psh\OneDrive\Documents\Projects\5742\_EC\_psh\35.dgn