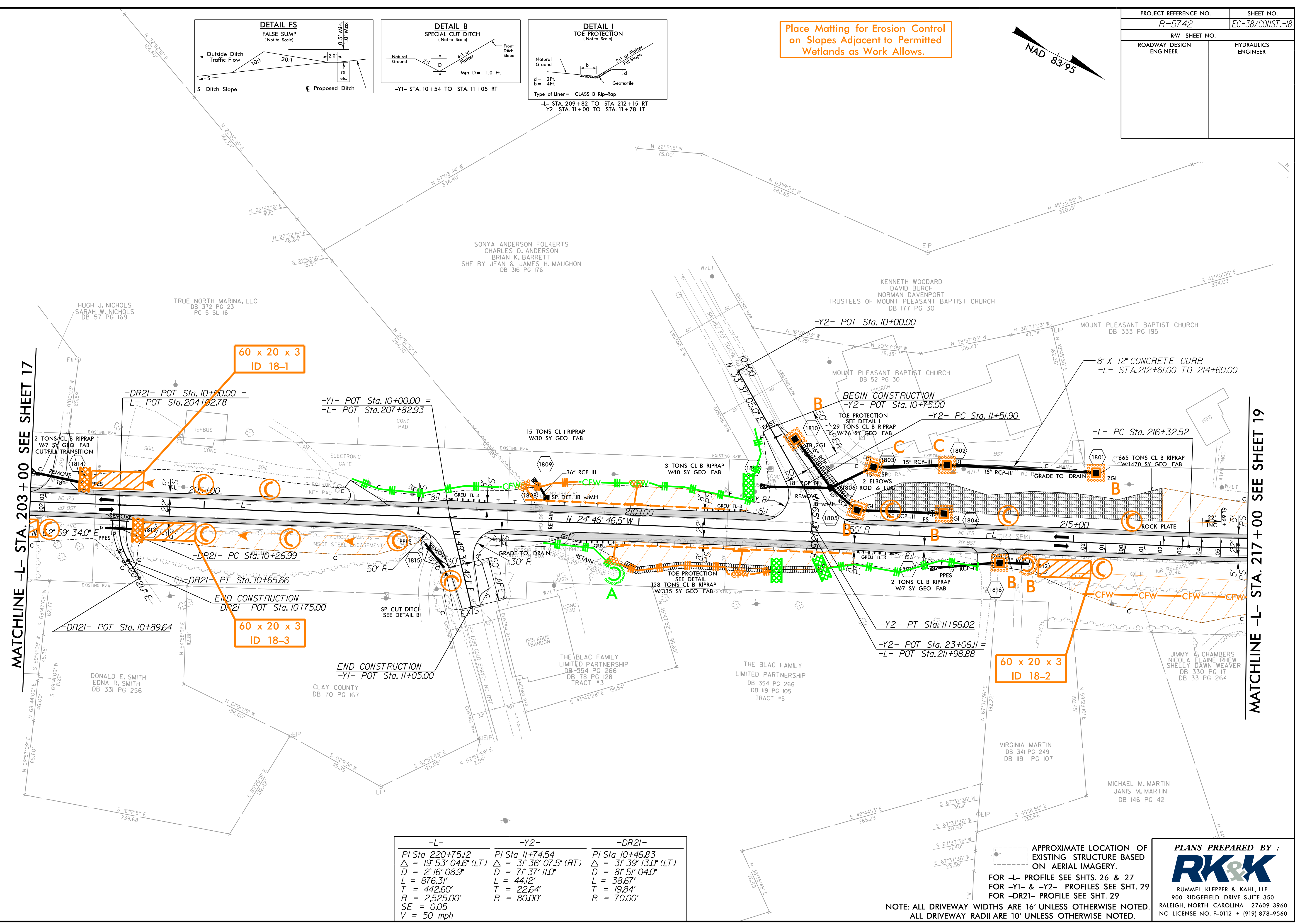
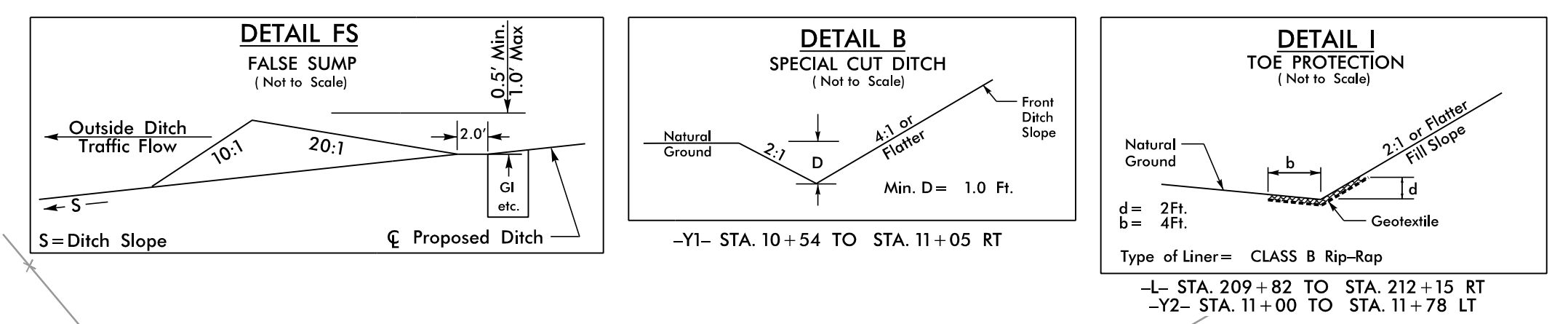
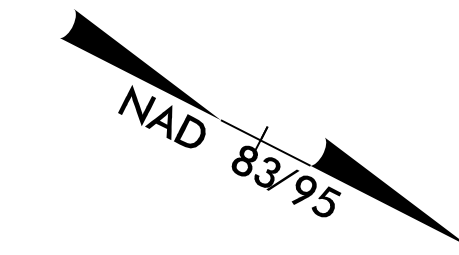


PROJECT REFERENCE NO.	SHEET NO.
R-5742	EC-38/CONST.-18
RW SHEET NO.	
ROADWAY DESIGN ENGINEER	HYDRAULICS ENGINEER

Place Matting for Erosion Control on Slopes Adjacent to Permitted Wetlands as Work Allows.



MATCHLINE -L- STA. 203 + 00 SEE SHEET 17

MATCHLINE -L- STA. 217 + 00 SEE SHEET 19

-L-	-Y2-	-DR21-
PI Sta 220+75.12	PI Sta 11+74.54	PI Sta 10+46.83
$\Delta = 19' 53' 04.6''$ (LT)	$\Delta = 31' 36' 07.5''$ (RT)	$\Delta = 31' 39' 13.0''$ (LT)
D = 2' 16' 08.9"	D = 71' 37' 11.0"	D = 81' 51' 04.0"
L = 876.31'	L = 44.2'	L = 38.67'
T = 442.60'	T = 22.64'	T = 19.84'
R = 2,525.00'	R = 80.00'	R = 70.00'
SE = 0.05		
V = 50 mph		

APPROXIMATE LOCATION OF EXISTING STRUCTURE BASED ON AERIAL IMAGERY.  
 FOR -L- PROFILE SEE SHTS. 26 & 27  
 FOR -Y1- & -Y2- PROFILES SEE SHT. 29  
 FOR -DR21- PROFILE SEE SHT. 29

NOTE: ALL DRIVEWAY WIDTHS ARE 16' UNLESS OTHERWISE NOTED.  
 ALL DRIVEWAY RADII ARE 10' UNLESS OTHERWISE NOTED.

PLANS PREPARED BY :

RUMMEL, KLEPPER & KAHL, LLP  
 900 RIDGEFIELD DRIVE SUITE 350  
 RALEIGH, NORTH CAROLINA 27609-3960  
 NC LICENSE NO. F-0112 • (919) 878-9560

8.17.19  
 R:\Hydraulics\CADD\PSH\Erosion\_Control\NR-5742\_EC\_psh34.dgn  
 12/21/2018