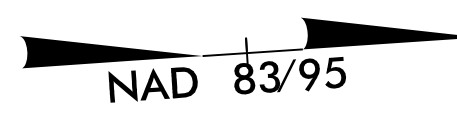
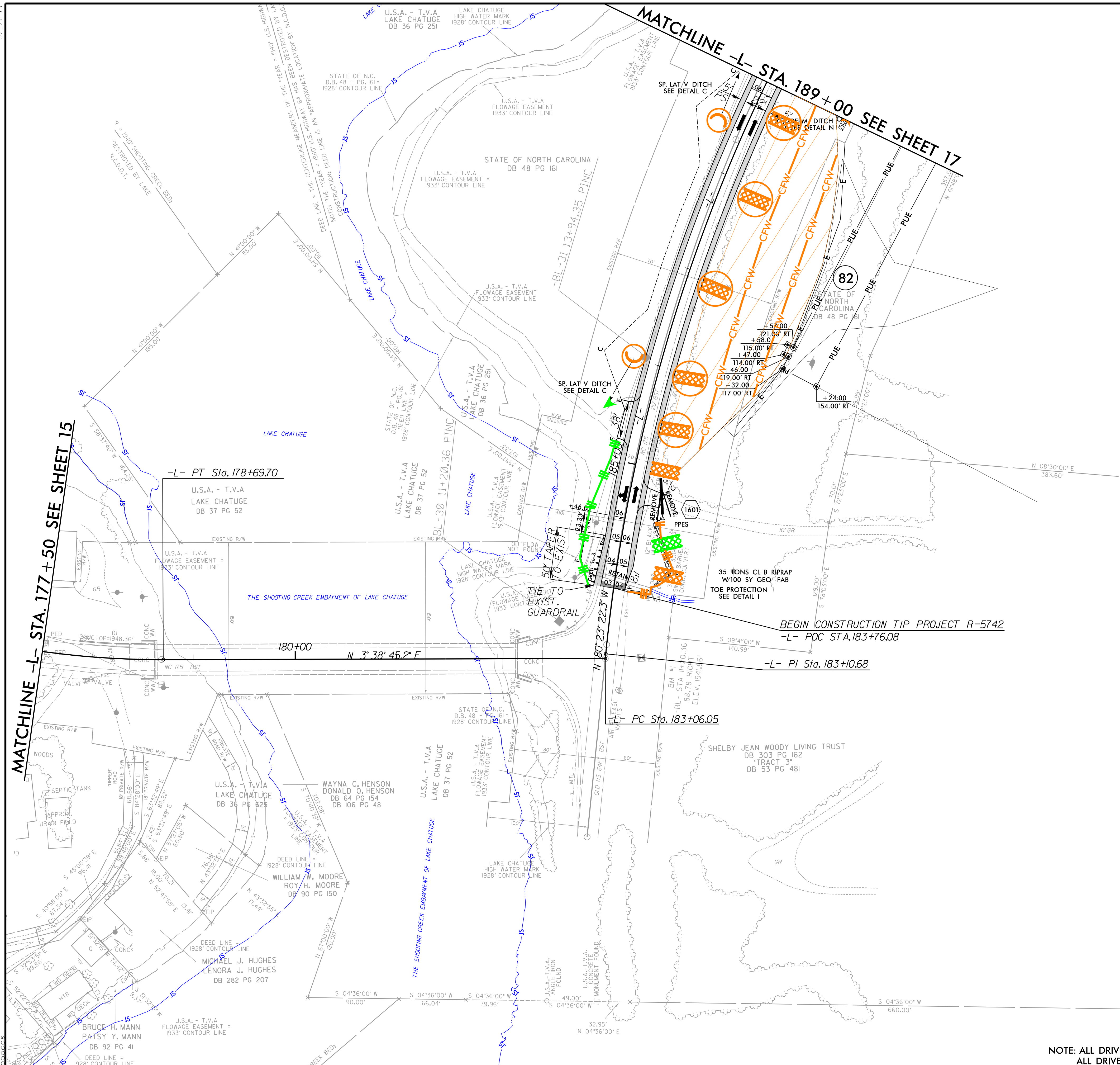


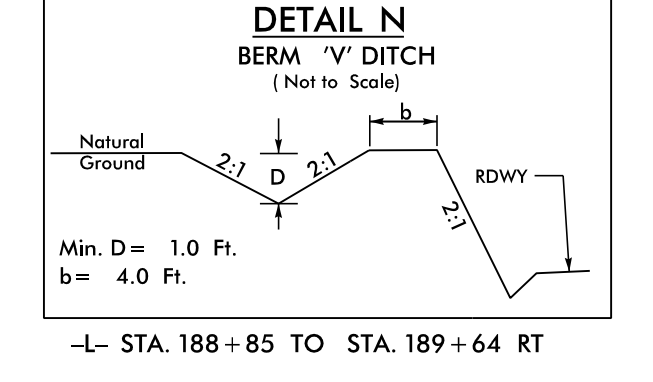
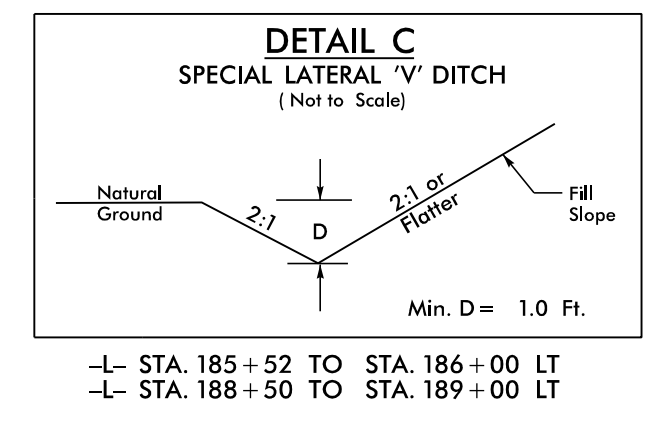
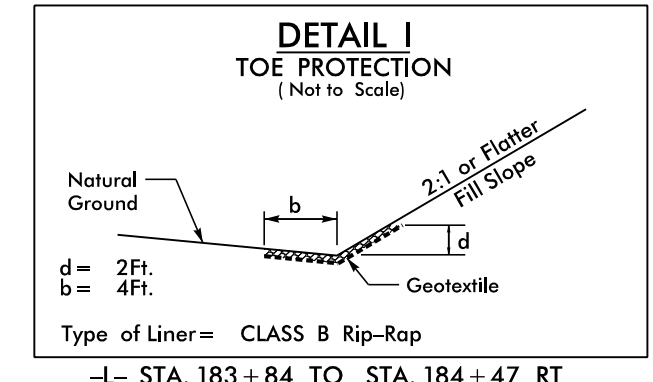
8/17/99  
R:\Projects\2018\18-000\Drawings\CADD\PSH\Erosion\_Control\18-5742\_EC\_psh32.dgn



PROJECT REFERENCE NO.	SHEET NO.
R-5742	EC-36/CONST.-16
RW SHEET NO.	
ROADWAY DESIGN ENGINEER	HYDRAULICS ENGINEER

MATCHLINE -L- STA. 177 + 50 SEE SHEET 15

MATCHLINE -L- STA. 189 + 00 SEE SHEET 17



-L-

PI Sta 177+07.00 $\Delta = 22' 12'' 59.2''$ (LT) $D = 6' 4'' 26.4''$ $L = 329.59'$ $T = 166.89'$ $R = 850.00'$ $SE = 0.08$ $V = 50$ mph	PI Sta 192+07.18 $\Delta = 55' 36'' 35.8''$ (RT) $D = 3' 22'' 13.2''$ $L = 1,649.98'$ $T = 896.50'$ $R = 1,700.00'$ $SE = 0.06$ $V = 50$ mph
--	---

FOR -L- PROFILE SEE SHTS. 25 & 26  
NOTE: ALL DRIVEWAY WIDTHS ARE 16' UNLESS OTHERWISE NOTED.  
ALL DRIVEWAY RADII ARE 10' UNLESS OTHERWISE NOTED.

PLANS PREPARED BY :

RUMMEL, KLEPPER & KAHL, LLP  
900 RIDGEFIELD DRIVE SUITE 350  
RALEIGH, NORTH CAROLINA 27609-3960  
NC LICENSE NO. F-0112 • (919) 878-9560