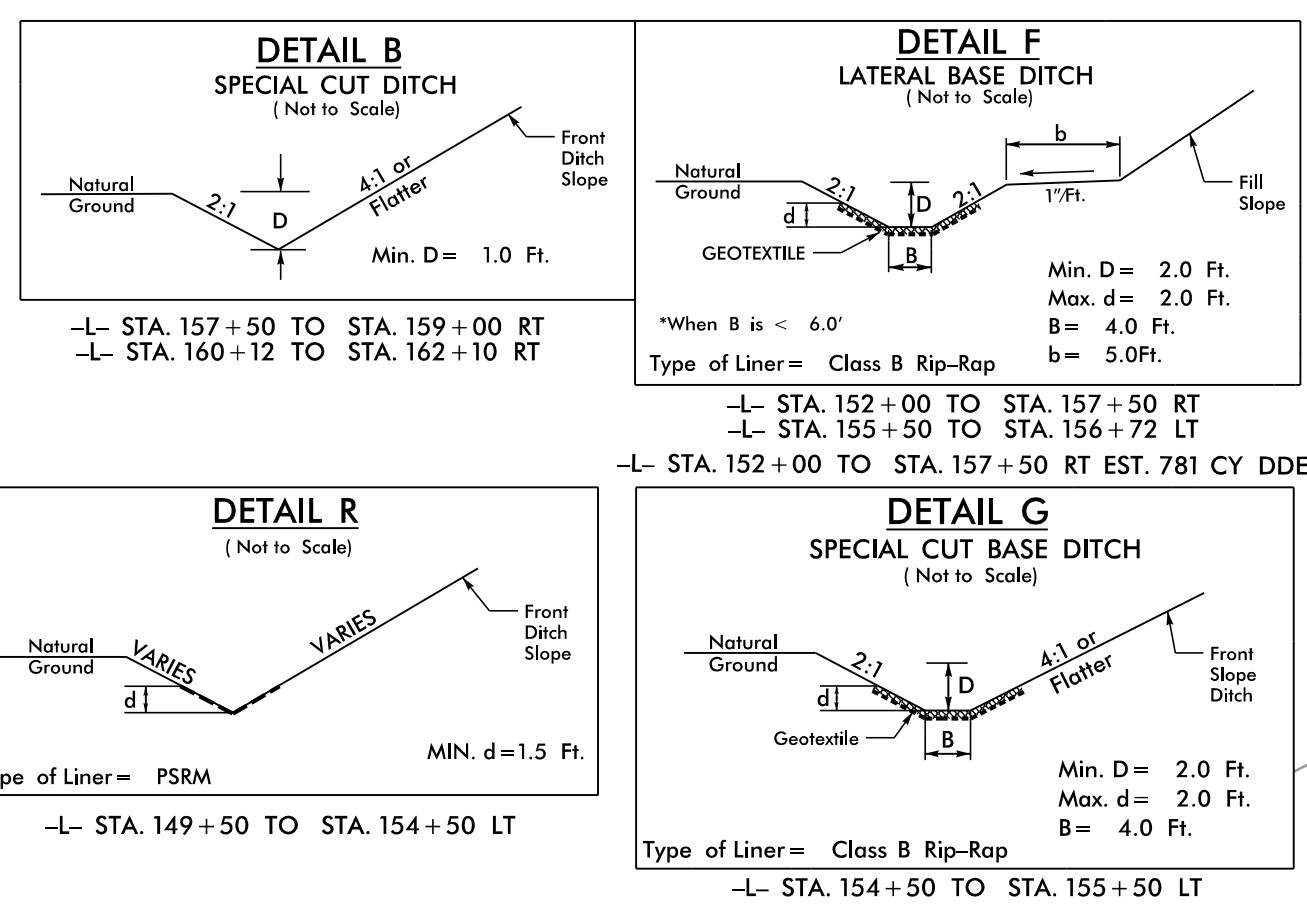
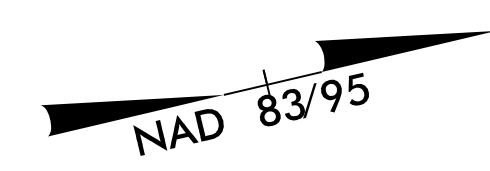


8/17/99

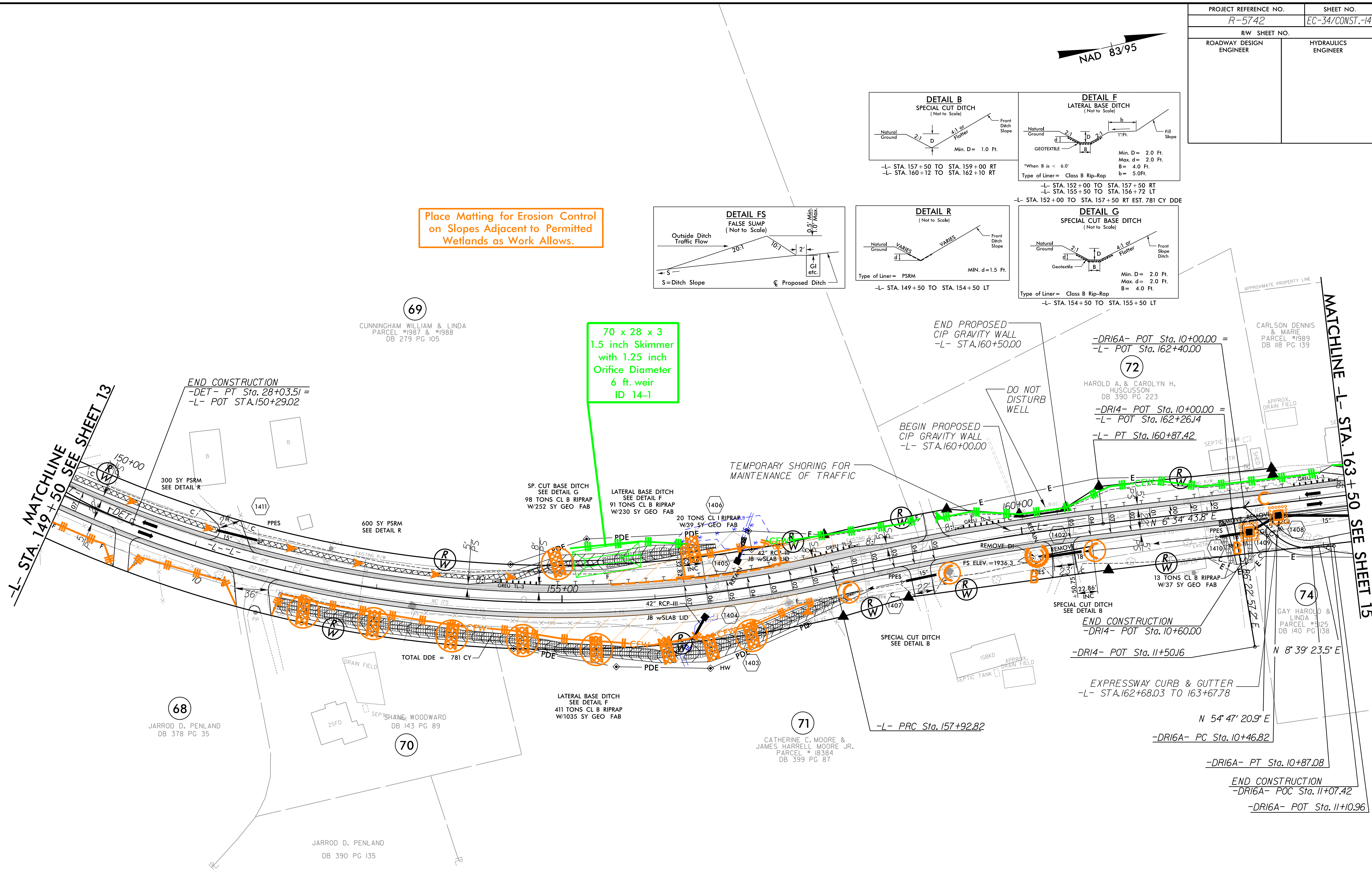
R:\21\208\Hydraulics\CADD\PSH\Erosion Control\NR-5742-EC.psh30.dgn

PROJECT REFERENCE NO.	SHEET NO.
R-5742	EC-34/CONST.-14
RW SHEET NO.	
ROADWAY DESIGN ENGINEER	HYDRAULICS ENGINEER



Place Matting for Erosion Control on Slopes Adjacent to Permitted Wetlands as Work Allows.

70 x 28 x 3  
1.5 inch Skimmer  
with 1.25 inch  
Orifice Diameter  
6 ft. weir  
ID 14-1



-DR16A-		-L-	
PI Sta 10+68.11	PI Sta 150+97.53	PI Sta 159+40.29	
$\Delta = 46^{\circ} 07' 57.4''$ (LT)	$\Delta = 75^{\circ} 25' 46.6''$ (LT)	$\Delta = 6^{\circ} 35' 36.5''$ (RT)	
D = 114' 35' 29.6"	D = 4' 28' 34.4"	D = 2' 14' 17.2"	
L = 40.26'	L = 1,685.11'	L = 294.60'	
T = 21.29'	T = 989.82'	T = 147.46'	
R = 50.00'	R = 1,280.00'	R = 2,560.00'	
	SE = 0.07	SE = 0.05	
	V = 50 mph	V = 50 mph	

FOR LIMITS OF TEMPORARY SHORING, SEE TRAFFIC CONTROL PLANS.  
 FOR -L- PROFILE SEE SHT. 25  
 FOR -DR14- PROFILE SEE SHT. 29  
 FOR -DET- PLAN PROFILE SEE SHT. 2B-3  
 FOR WALL 3 PROFILE SEE SHT. W-2

NOTE: ALL DRIVEWAY WIDTHS ARE 16' UNLESS OTHERWISE NOTED.  
 ALL DRIVEWAY RADII ARE 10' UNLESS OTHERWISE NOTED.

**PLANS PREPARED BY :**  
**RK&K**  
 RUMMEL, KLEPPER & KAHL, LLP  
 900 RIDGEFIELD DRIVE SUITE 350  
 RALEIGH, NORTH CAROLINA 27609-3960  
 NC LICENSE NO. F-0112 • (919) 878-9560