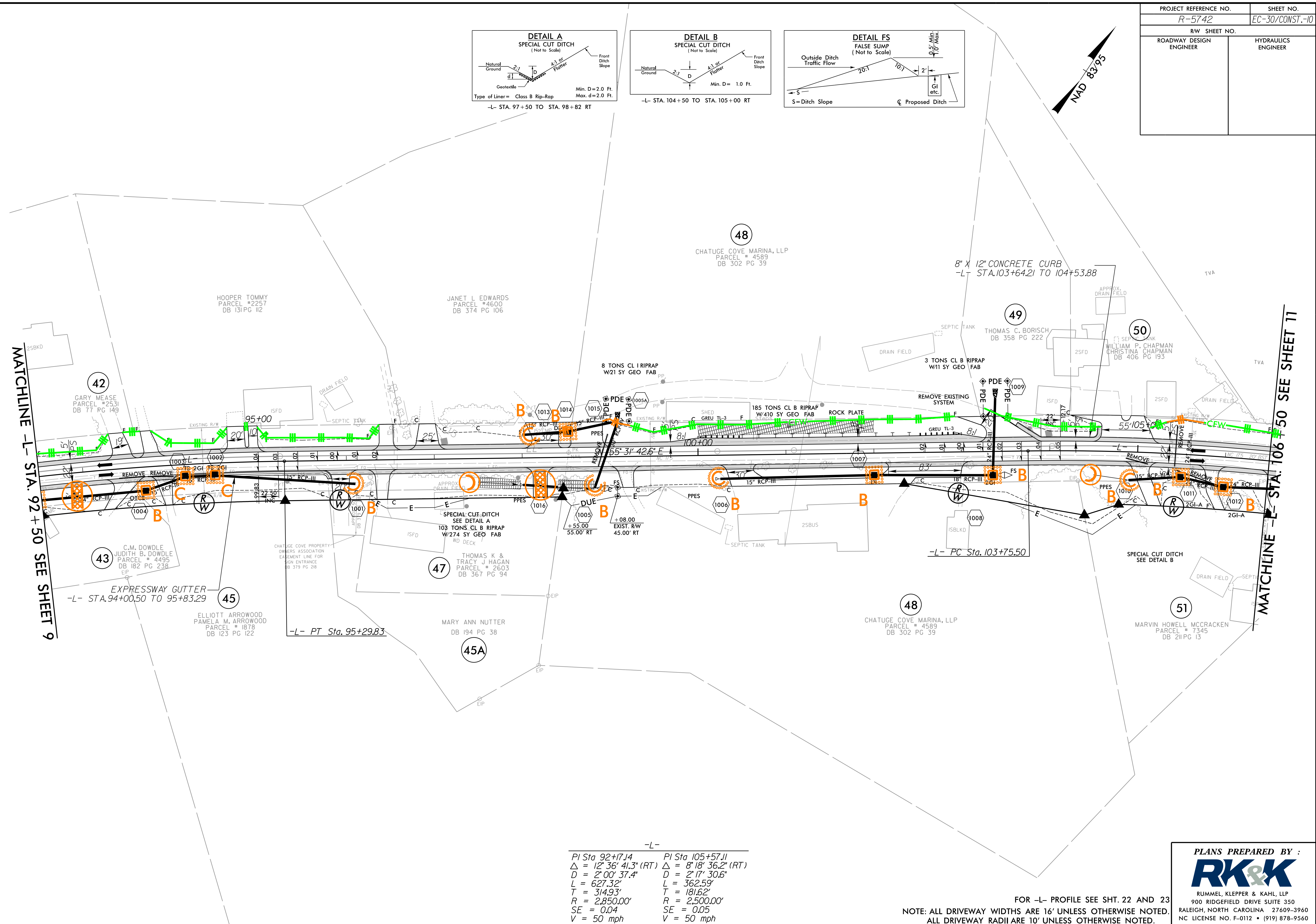
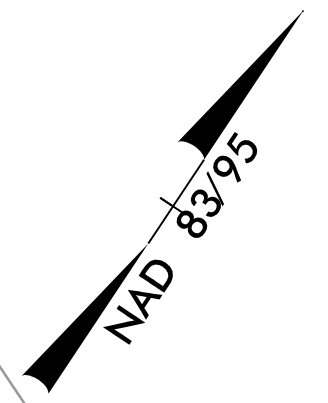
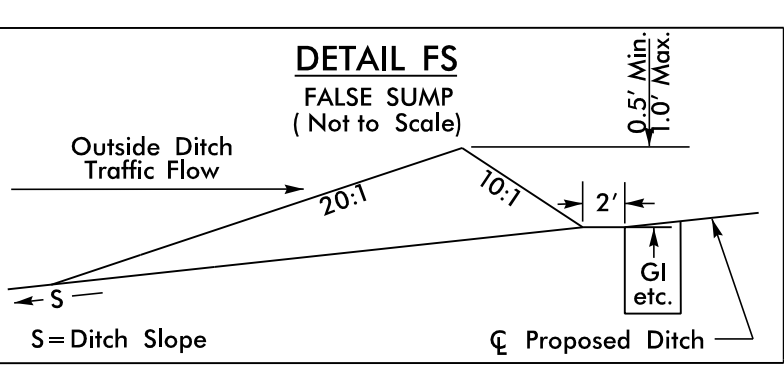
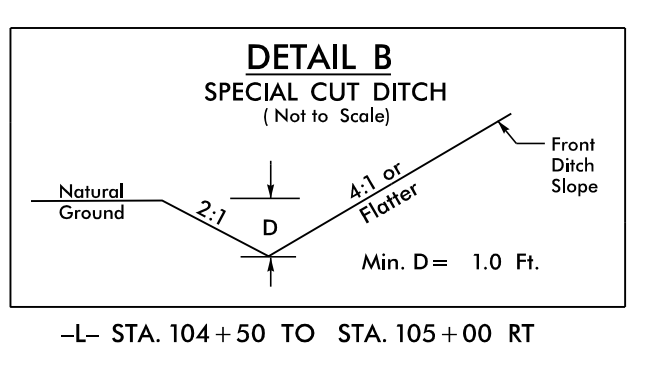
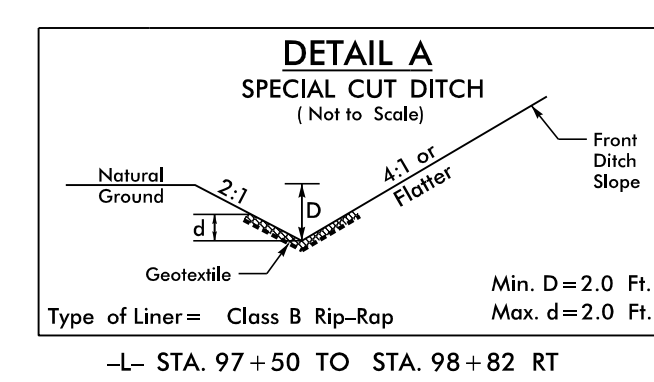


8/17/99  
R:\Hydro\Projects\CADD\PSH\Erosion\_Control\NR-5742\_EC\_psh26.dgn  
12/21/2018

PROJECT REFERENCE NO. R-5742	SHEET NO. EC-30/CONST.-10
RW SHEET NO.	
ROADWAY DESIGN ENGINEER	HYDRAULICS ENGINEER



MATCHLINE -L- STA. 92+50 SEE SHEET 9

MATCHLINE -L- STA. 106+50 SEE SHEET 11

-L-

PI Sta 92+17.14	PI Sta 105+57.11
$\Delta = 12' 36'' 41.3'' (RT)$	$\Delta = 8' 18'' 36.2'' (RT)$
$D = 2' 00'' 37.4''$	$D = 2' 17'' 30.6''$
$L = 627.32'$	$L = 362.59'$
$T = 314.93'$	$T = 181.62'$
$R = 2,850.00'$	$R = 2,500.00'$
$SE = 0.04$	$SE = 0.05$
$V = 50 \text{ mph}$	$V = 50 \text{ mph}$

FOR -L- PROFILE SEE SHT. 22 AND 23  
NOTE: ALL DRIVEWAY WIDTHS ARE 16' UNLESS OTHERWISE NOTED.  
ALL DRIVEWAY RADII ARE 10' UNLESS OTHERWISE NOTED.

PLANS PREPARED BY :

RUMMEL, KLEPPER & KAHL, LLP  
900 RIDGEFIELD DRIVE SUITE 350  
RALEIGH, NORTH CAROLINA 27609-3960  
NC LICENSE NO. F-0112 • (919) 878-9560