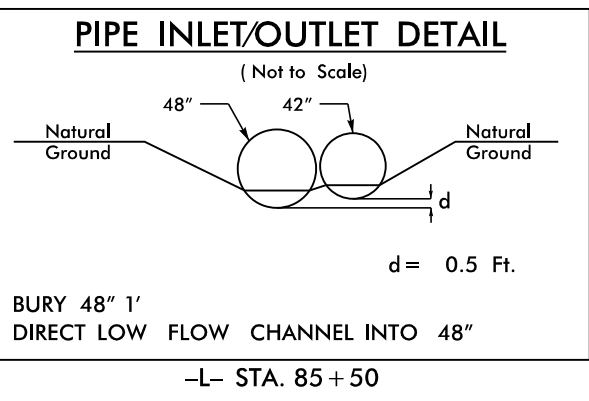
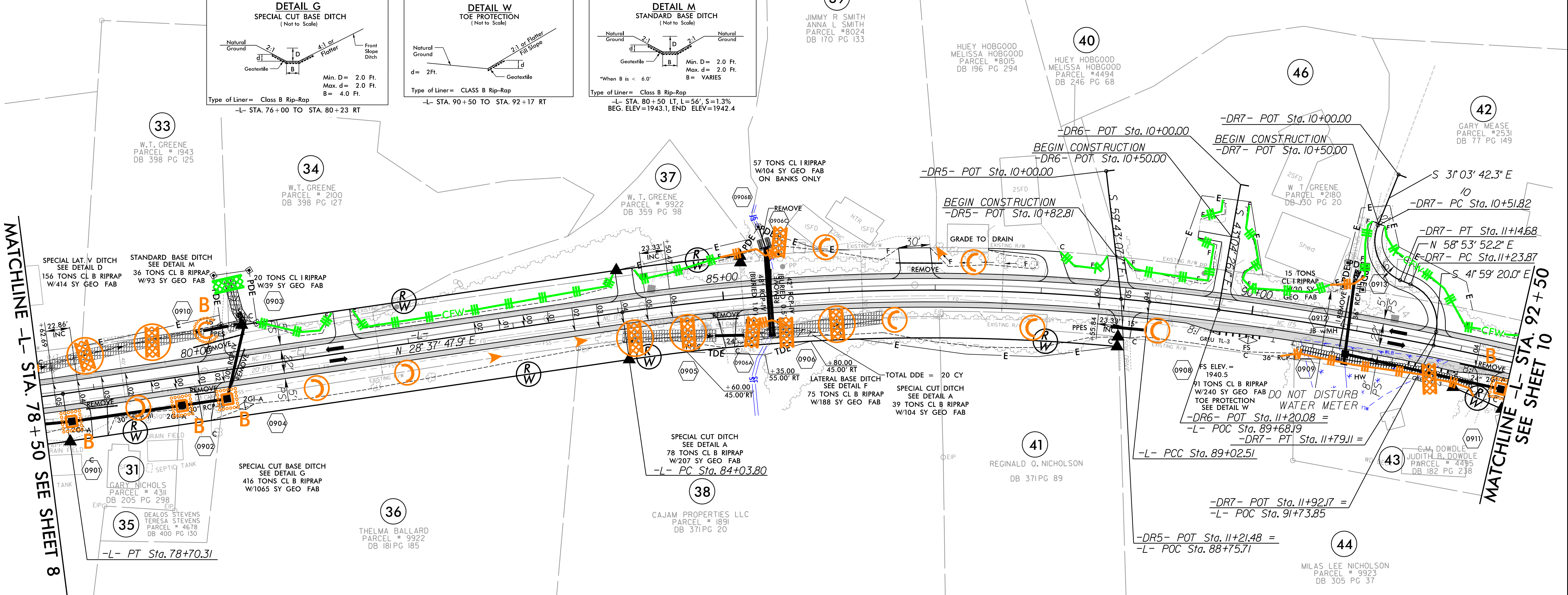
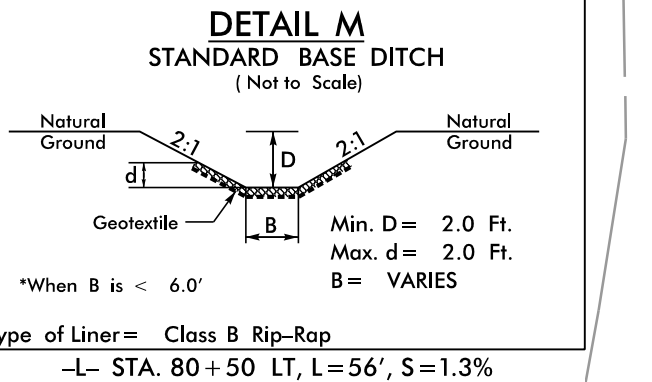
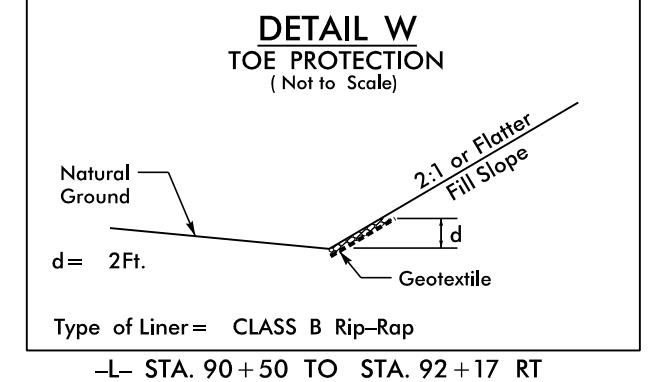
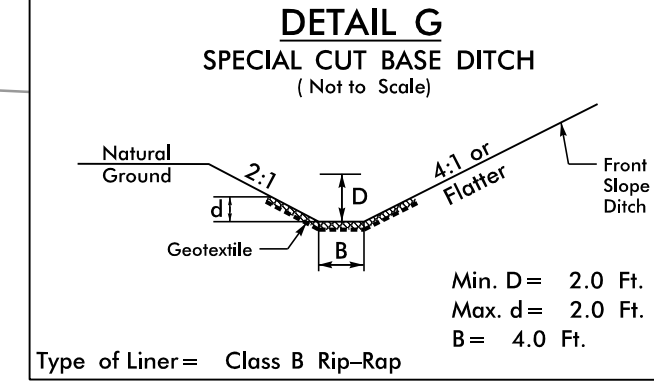
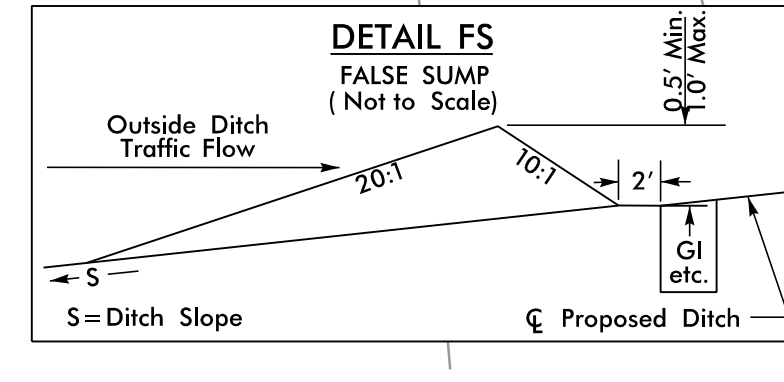
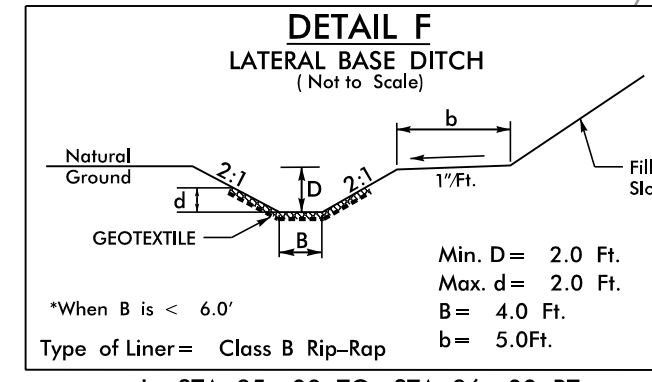
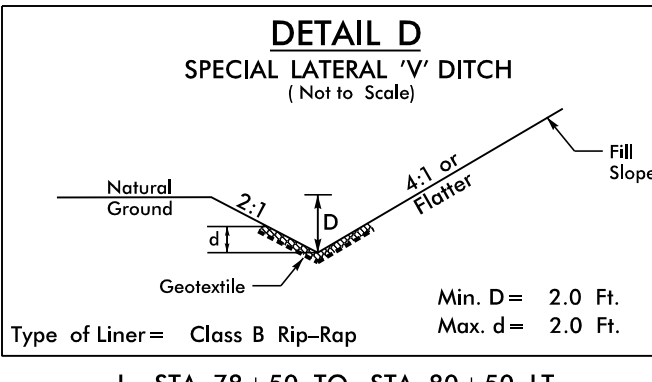
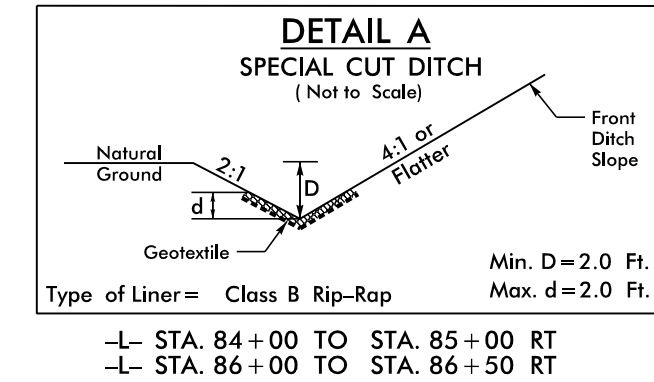
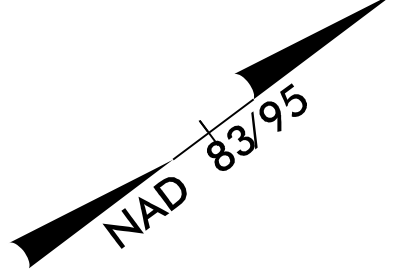


Place Matting for Erosion Control on Slopes Adjacent to Permitted Wetlands as Work Allows.



-L-			-DR7-		
PI Sta 76+55.30	PI Sta 86+54.46	PI Sta 92+7.44	PI Sta 10+90.54	PI Sta 11+56.91	
$\Delta = 20' 45" 42.0" (LT)$	$\Delta = 14' 17" 13.4" (RT)$	$\Delta = 12' 36" 41.3" (RT)$	$\Delta = 89' 12" 35.1" (LT)$	$\Delta = 79' 06" 47.8" (RT)$	
D = 4' 46" 28.7"	D = 2' 51" 53.2"	D = 2' 00" 37.4"	D = 143' 14" 22.0"	D = 143' 14" 22.0"	
L = 434.83'	L = 498.71'	L = 627.32'	L = 62.28'	L = 55.23'	
T = 219.83'	T = 250.66'	T = 314.93'	T = 39.45'	T = 33.04'	
R = 1,200.00'	R = 2,000.00'	R = 2,850.00'	R = 40.00'	R = 40.00'	
SE = 0.07	SE = 0.06	SE = 0.04			
V = 50 mph	V = 50 mph	V = 50 mph			

FOR -L- PROFILE SEE SHT. 22  
FOR -DR5-, -DR6- & -DR7- PROFILES SEE SHT. 28  
NOTE: ALL DRIVEWAY WIDTHS ARE 16' UNLESS OTHERWISE NOTED.  
ALL DRIVEWAY RADII ARE 10' UNLESS OTHERWISE NOTED.

PLANS PREPARED BY :

RUMMEL, KLEPPER & KAHL, LLP  
900 RIDGEFIELD DRIVE SUITE 350  
RALEIGH, NORTH CAROLINA 27609-3960  
NC LICENSE NO. F-0112 • (919) 878-9560

8/17/09  
R:\Projects\2008\12\21\2008\Roadway\EC-29\Const\EC-29-09\Roadway\EC-29-09.dgn  
R:\Projects\2008\12\21\2008\Roadway\EC-29\Const\EC-29-09\Roadway\EC-29-09.dgn